



see what Delta can do™

LOT 10 SM5  
MAIN ? ENSULITE

# Lahara Two Handle Centerset Lavatory Faucet

Model Number: 2538-RBMPU-DST



## Features & Benefits

- Lahara, inspired by the beauty and bliss created by waves
- The elegant, one-piece curved handles and sleek spout of Lahara compliments any decor.
- Fits 2 1/4 max. deck thickness
- Two handle design for precise temperature control
- DIAMOND Valve
- Metal pop-up drain included

## Smart Features

-  ADA Compliant
  -  DIAMOND™ Seal Technology
  -  WaterSense® Labeled Product
  -  Water-Efficient
  -  Legislation Compliant
- This product meets EPA criteria for WaterSense.



see what Delta can do™

LOT 10 SMC5  
MAIN & ENSUITE

# Lahara Roman Tub Trim

Model Number: T2738-RB



## Features & Benefits

- Lahara, inspired by the beauty and bliss created by waves
- The elegant, one-piece curved handles and sleek spout of Lahara compliments any decor.
- Features a complete suite of coordinating products: Accessories, Faucets, and showers
- Available in four finishes: chrome, Brilliance Stainless, Venetian Bronze, and Aged Pewter which extend the look throughout the bath.
- Elegant metal lever handles for ease of operation
- Order rough separately

## Smart Features

 ADA Compliant

## Product Specifications

**VALVE TYPE:** Washerless stem cartridge

**FLOW RATE:** 19.0 gpm @ 80 psi, 71.9 L/min @ 550 kPa



see what Delta can do™

LOT 10 SM5  
MAIN & ENSUITE

# Lahara Monitor® 14 Series Shower Trim

Model Number: T14238-RB



## Features & Benefits

- Lahara, inspired by the beauty and bliss created by waves
- The elegant, one-piece curved handles and sleek spout of Lahara compliments any decor.
- Features a complete suite of coordinating products: Accessories, Faucets, and showers
- Available in four finishes: chrome, Brilliance Stainless, Venetian Bronze, and Aged Pewter which extend the look throughout the bath.
- Single function pressure balance cartridge
- Order MultiChoice® rough separately

## Smart Features

-  ADA Compliant
  -  WaterSense® Labeled Product
  -  MultiChoice® Universal Valve
  -  Monitor
  -  Water-Efficient
  -  Touch Clean
- This product meets EPA criteria for WaterSense.

## Product Specifications

**VALVE TYPE:** Single-function pressure balance cartridge

**FLOW RATE:** 2.0 gpm @ 80 psi, 7.6 L/min @ 550 kPa maximum water usage

**SPRAY SETTINGS:**  Full Body Spray

**American Standard**

Style That Works Better

 **BARRIER FREE**

**CADET® 3 RIGHT HEIGHT™ 14" ROUGH-IN ELONGATED TOILET**  
VITREOUS CHINA

**CADET® 3 RIGHT HEIGHT™ 14" ROUGH-IN ELONGATED TOILET**

☐ **2386.014**

- Vitreous china
- Low-consumption (6.0 Lpf/1.6 gpf)
- EverClean® surface inhibits the growth of stain- and odor-causing bacteria, mold, and mildew on the surface
- Features the **Cadet® 3 Flushing System**
- 16-1/2" rim height for accessible application
- Elongated siphon action jetted bowl
- Fully-glazed 2-1/8" trapway with 2" ball pass
- Generous 9" x 8" water surface area
- Close-coupled tank with flat tank cover for superior storage
- Oversized 3" flush valve with chemical resistant flapper
- Chrome trip lever
- Speed Connect® tank-to-bowl coupling system
- Sanitary dam on bowl with four point tank stabilization
- 2 color-matched bolt caps
- 100% factory flush tested
- 5 year warranty

☐ **3016.016** Right Height™ Elongated Bowl

☐ **3016.001** Right Height™ Elongated Universal Bowl

☐ **4027.016** Tank

**Nominal Dimensions:**

819 x 445 x 775mm (32-1/4" x 17-1/2" x 30-1/2")

Fixture only, seat and supply by others

**Alternative Tank Configurations Available:**

- ☐ **4027.600** Tank complete with tank cover locking device
- ☐ **4027.800** Tank complete with trip lever on right side
- ☐ **4027.900** Tank complete with tank cover locking device and trip lever on right side

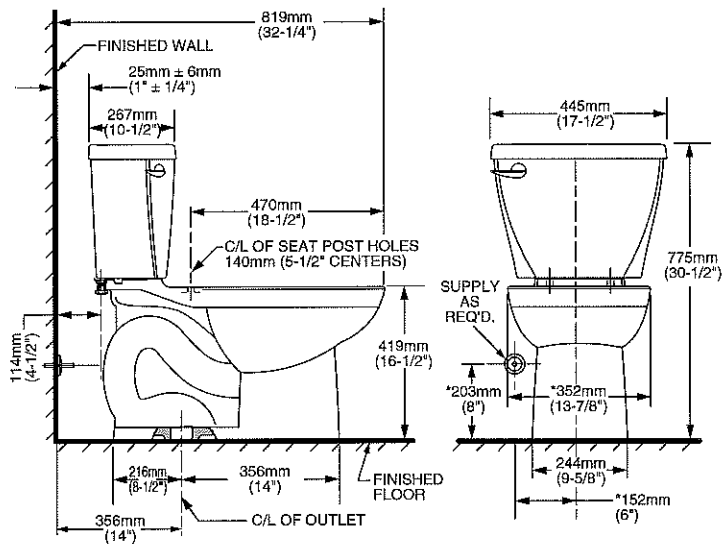
**Compliance Certifications -**

**Meets or Exceeds the Following Specifications:**

- ASME A112.19.2-2008/CSA B45.1-08 for Vitreous China Fixtures

**To Be Specified:**

- ☐ Color: ☐ White ☐ Bone ☐ Linen ☐ Black
- ☐ Seat: #5325.010 Elongated Champion® Slow Close solid plastic seat and cover with easy lift off feature
- ☐ Seat: #5284.016 Elongated EverClean® solid plastic seat and cover
- ☐ Seat: #5321.110 EverClean® Elongated Seat with Slow Close Snap-Off Hinges
- ☐ Supply with stop:



**NOTES:**

THIS TOILET IS DESIGNED TO ROUGH-IN AT A MINIMUM DIMENSION OF 356MM (14") FROM FINISHED WALL TO C/L OF OUTLET. SUPPLY NOT INCLUDED WITH FIXTURE AND MUST BE ORDERED SEPARATELY.

\* DIMENSION SHOWN FOR LOCATION OF SUPPLY IS SUGGESTED.

**IMPORTANT:** Dimensions of fixtures are nominal and may vary within the range of tolerances established by ANSI Standard A112.19.2. These measurements are subject to change or cancellation. No responsibility is assumed for use of superseded or voided pages.



**MEETS THE AMERICANS WITH DISABILITIES ACT GUIDELINES AND ANSI A117.1 REQUIREMENTS FOR ACCESSIBLE AND USABLE BUILDING FACILITIES-CHECK LOCAL CODES.**

**CADET® 3**  
Flushing System



see what Delta can do™

LOT 10 SM5

KITCHEN

# Linden Single Handle Water-Efficient Pull-Out Kitchen Faucet

Model Number: 4353-SS-DST

## Featured Accessories



## Features & Benefits

- The design was inspired by a strong presence in nature like that of tree with reaching branches.
- Water-efficient product with an enhanced flow option to fill the sink, pots or vases
- Multi-Flow™ delivers both 1.5 gpm stream and spray settings for water efficiency and 2.0 gpm stream setting for high performance
- Optional 10 1/2 escutcheon included
- 59 long hose
- 10 long, 8 high spout

## Smart Features

-  ADA Compliant
-  DIAMOND™ Seal Technology
-  Water-Efficient
-  Legislation Compliant
-  Multi-Flow™