



see what Delta can do™

LOT 69 SR2
ENSUITE

Lahara Roman Tub with Hand Shower Trim

Model Number: T4738



Features & Benefits

- Lahara, inspired by the beauty and bliss created by waves
- The elegant, one-piece curved handles and sleek spout of Lahara compliments any decor.
- Features a complete suite of coordinating products: Accessories, Faucets, and showers
- Available in four finishes: chrome, Brilliance Stainless, Venetian Bronze, and Aged Pewter which extend the look throughout the bath.
- Elegant metal lever handles for ease of operation
- Order rough separately

Smart Features

 ADA Compliant

Product Specifications

Valve Type: Washerless stem cartridge

Flow Rate: 18.0 gpm @ 60 psi, 68 L/min @ 414 kPa



see what Delta can do™

LOT 69 SR2

BATHROOMS THROUGHOUT

Lahara Two Handle Centerset Lavatory Faucet

Model Number: 2538



Features & Benefits

- Lahara, inspired by the beauty and bliss created by waves
- The elegant, one-piece curved handles and sleek spout of Lahara compliments any decor.
- Features a complete suite of coordinating products: Accessories, Faucets, and showers
- Available in four finishes: chrome, Brilliance Stainless, Venetian Bronze, and Aged Pewter which extend the look throughout the bath.
- Integrated water-efficient aerators provide a smart water delivery solution that maximizes water savings without sacrificing the comfort
- Elegant metal lever handles for ease of operation

Smart Features



ADA Compliant



WaterSense® Labeled Product



Water-Efficient

This product meets EPA criteria for WaterSense.

BOULEVARD PEDESTAL SINK

- Vitreous china
- Classic styled rectangular pedestal lavatory
- Rear overflow
- Supplied with mounting kit
- Right Height™ for greater comfort during use
- Faucet ledge with large deck area
(faucet not included)
- **Design coordinates with Studio Cadet®3 Toilet**
- Basin has flat bottom to also allow use as an **above counter** sink or a **countertop** sink (with u-shaped cut out)

- ☐ **0641.800** Faucet holes on 203mm (8") centers (Illustrated)
- ☒ **0641.400** Faucet holes on 102mm (4") centers
- ☐ **0641.100** Center hole only

Nominal Dimensions:

610 x 483 x 902mm
(24" x 19" x 35-1/2")

- ☐ **0641.008** Lavatory slab-203mm (8") centers
- ☐ **0641.004** Lavatory slab-102mm (4") centers
- ☐ **0641.001** Lavatory slab-center hole only
- ☐ **0010.000** Pedestal only

Bowl sizes:

432mm (17") wide,
318mm (12-1/2") front to back,
127mm (5") deep

Compliance Certifications -

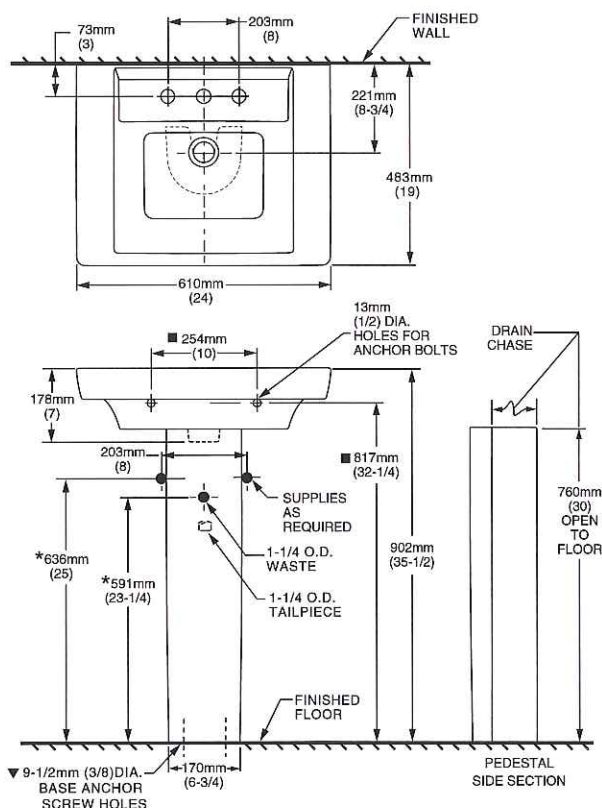
Meets or Exceeds the Following Specifications:

- ASME A112.19.2 - 2008/CSA B45.1-08

To Be Specified:

- ☐ Color: ☐ White ☐ Bone ☐ Linen ☐ Black
☐ Faucet Finish:
☐ Supplies:
☐ 1-1/4" Trap:
☐ Nipple:

* See faucet section for additional models available



NOTES:

* DIMENSIONS SHOWN FOR LOCATION OF SUPPLIES AND "P" TRAPS ARE SUGGESTED.

▼ PEDESTAL ANCHORING SCREWS NOT INCLUDED.

■ SUITABLE FOR REINFORCEMENT ONLY. ACTUAL DIMENSIONS MUST BE TAKEN FROM FIXTURE.

BE TAKEN FROM THE TOP.
FITTING NOT INCLUDED AND MUST BE ORDERED SEPARATELY.
PROVIDE SUITABLE REINFORCEMENT FOR ALL WALL SUPPORTS.
INSTALLATION INSTRUCTIONS SUPPLIED WITH LAVATORY.

IMPORTANT: Dimensions of fixtures are nominal and may vary within the range of tolerance established by ANSI Standard A112.19.2
These measurements are subject to change or cancellation. No responsibility is assumed for use of superseded or voided pages.



see what Delta can do™

LOT 69 SP2
LAUNDRY RM.

Collins Single Handle Kitchen Faucet

Model Number: 141-DST

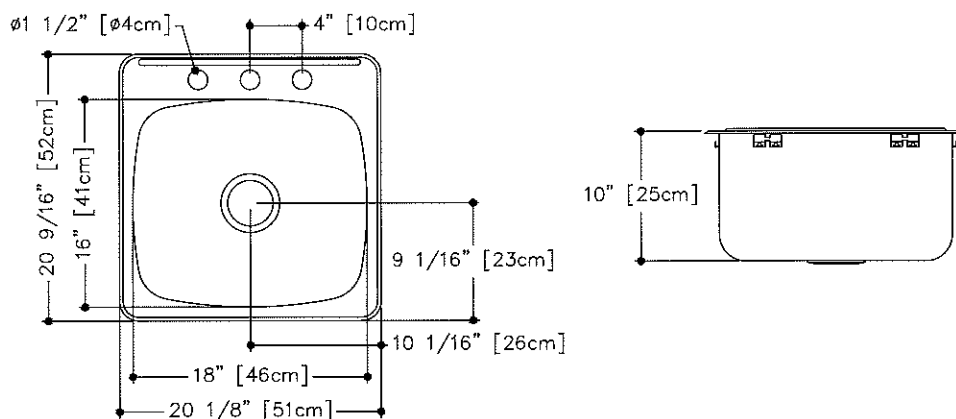
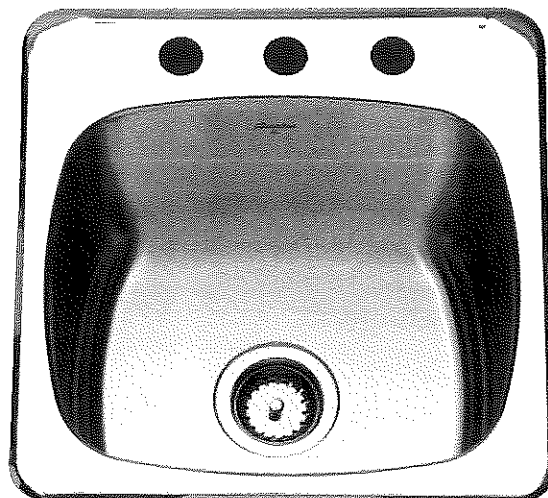


Features & Benefits

- Sleek design with the charm of simplicity
- The arc of the Collins spout adds clearance for easy filling of pots and pans
- Features DIAMOND™ Seal Technology
- Arched spout for easy filling of pots and pans
- Single handle for ease of control with one hand

Smart Features

-  ADA Compliant
-  DIAMOND™ Seal Technology
-  Water-Efficient
-  Legislation Compliant



QSL2020/10 SPECIFICATION

Model QSL2020/10 is a single bowl ledgeback sink manufactured by Franke Kindred Canada Limited from 20 gauge, 18-8 stainless steel. Product has a bright mirror finished rim and satin finished bowl. Sink is fully undercoated. Basket strainer waste fitting (3 1/2", 89 mm), and installation kit are included. Sink bowl has a 41 Litre (10.8 U.S. gallon) capacity. Sink is backed with a limited buyer lifetime warranty.

- O.D. 20 9/16" x 20 1/8" x 10" (52 x 51 x 25 cm)
- Recommended for minimum 24" cabinet



WHITEHAVEN™

Features

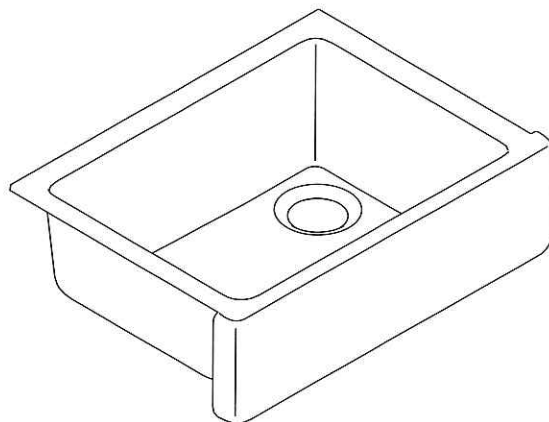
- KOHLER cast iron
- Acid-resistant enamel finish
- Single basin
- Undercounter
- With 8-13/16" (224 mm) Self-Trimming™, integral apron
- Fits a 30" (762 mm) apron sink base cabinet
- 29-11/16" (754 mm) x 21-9/16" (548 mm)

Codes/Standards Applicable

Specified model meets or exceeds the following:

- ASME A112.19.1/CSA B45.2

UNDERCOUNTER SELF-TRIMMING™ APRON FRONT KITCHEN SINK K-6487



Colors/Finishes

- 0: White
- Other: Refer to Price Book for additional colors/finishes

Accessories

- CP: Polished Chrome
- ST: Stainless Steel
- Other: Refer to Price Book for additional colors/finishes

Specified Model

Model	Description	Colors/Finishes	
K-6487	Undercounter Self-Trimming apron front kitchen sink – tall apron	<input type="checkbox"/> 0	<input type="checkbox"/> Other_____
Recommended Accessories			
K-9000	P-Trap	<input type="checkbox"/> CP	
Optional Accessories			
K-6638	Stainless steel bottom basin rack	<input type="checkbox"/> ST	
K-8801	Duostrainer® sink strainer	<input type="checkbox"/> CP	<input type="checkbox"/> Other_____

Product Specification

The kitchen sink shall be made of cast iron with acid-resistant enamel finish. Sink shall be 29-11/16" (754 mm) in length and 21-9/16" (548 mm) in width. Sink shall be for undercounter installation. Sink shall have a single basin with 8-13/16" (224 mm) Self-Trimming integral apron. Sink shall fit a 30" (762 mm) apron sink base cabinet. Sink shall be Kohler Model K-6487-_____.

WHITEHAVEN™

Technical Information

Fixture*	
Basin area	24-3/4" (629 mm) x 18-1/16" (459 mm)
Water depth	9" (229 mm)
Drain hole	Ø 3-5/8" (92 mm)
* Approximate measurements for comparison only.	

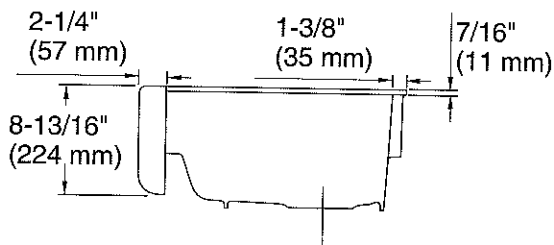
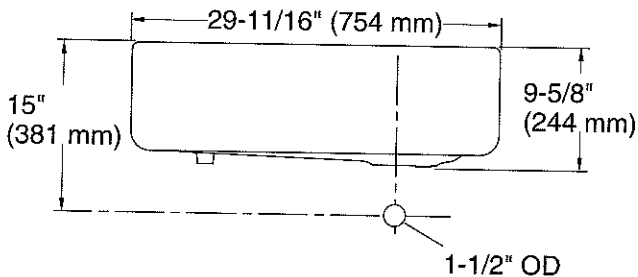
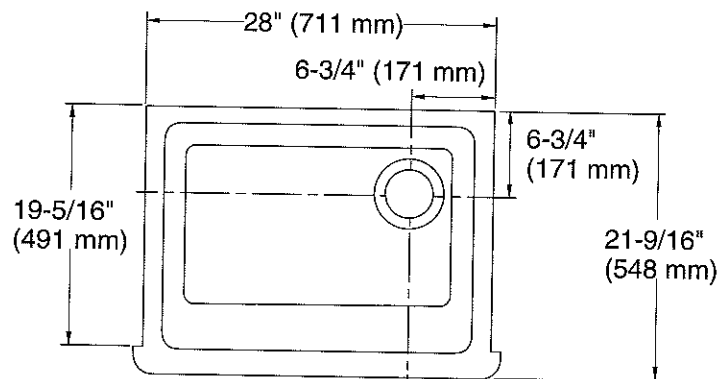
Included components:	
Countertop cut-out template	1156909-7
Cabinet face cut-out template	1157000

Installation Notes

Install this product according to the installation guide.

IMPORTANT! The distance from the top edge of the cabinet to the top of the cabinet door must be at least 9" (229 mm) to install this sink.

NOTICE: Countertop manufacturer or cutter must use the cut-out template provided with the product, or a current one provided by Kohler Co. (call 1-800-4-KOHLER). Kohler Co is not responsible for cutout errors when the incorrect cut-out template is used.



Product Diagram