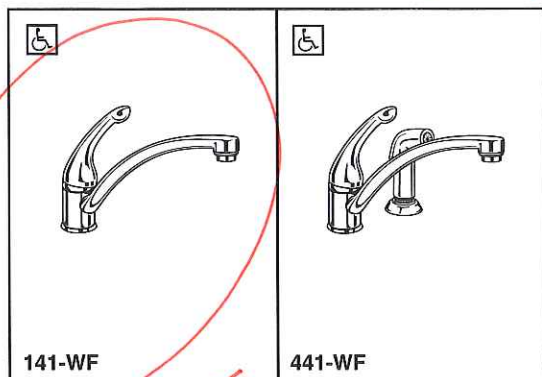
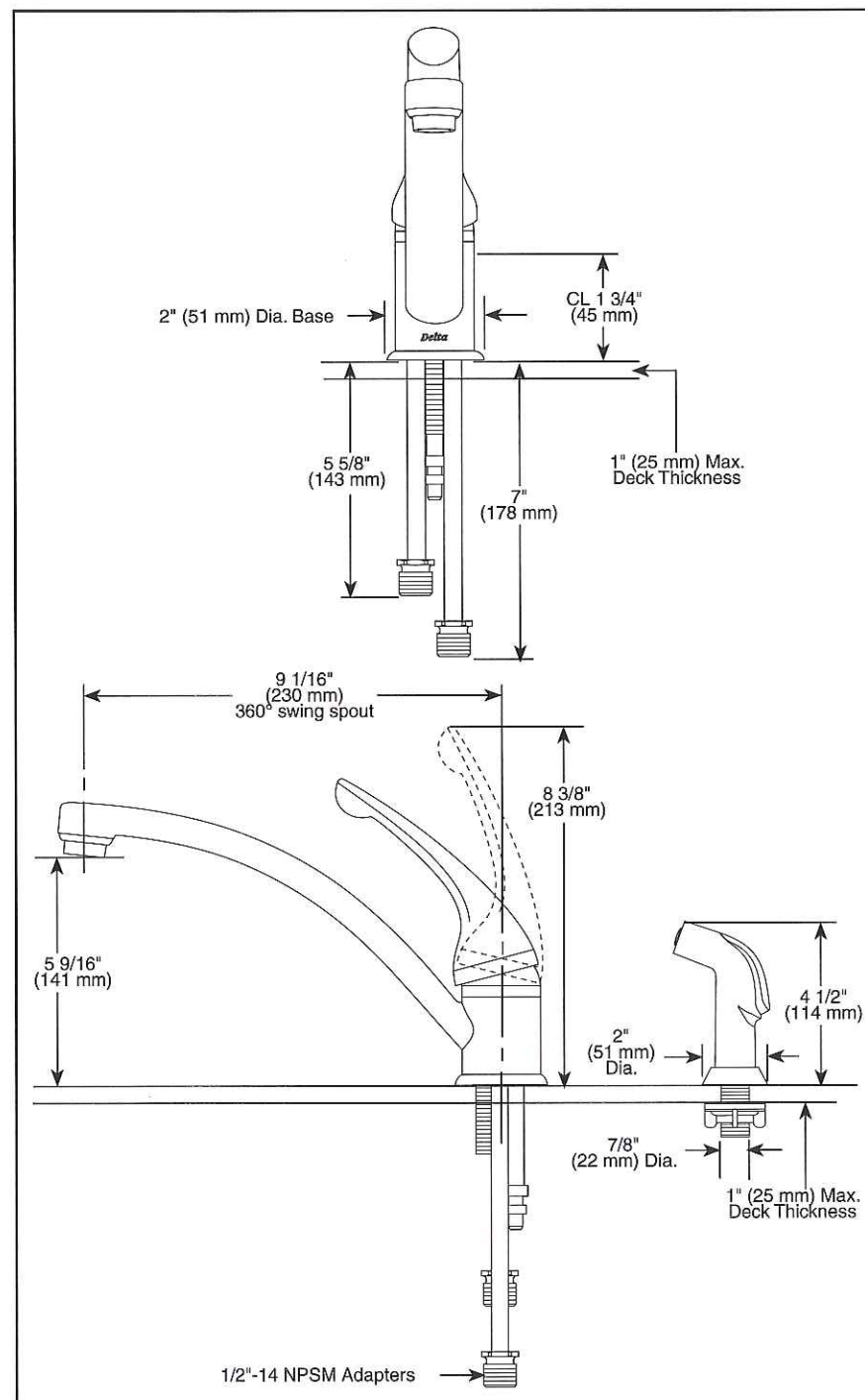


LOT 17 WTR



Submitted Model No.: _____

Specific Features: _____



Delta reserves the right (1) to make changes in specifications and materials, and (2) to change or discontinue models, both without notice or obligation. Dimensions are for reference only. See full-line price book for finish options and product availability.
DSP-K-141 Rev. E



KITCHEN FAUCETS

- Signature® Series
- Single Handle Deck Mount
- Single and 2 Hole Sink Applications
- Quick Snap® Vegetable Sprayer Hose Installation on Model 441 Series

STANDARD SPECIFICATIONS:

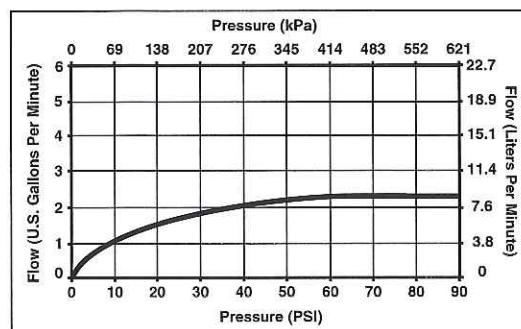
- Solid brass fabricated body.
- 9 1/16" (230 mm) long spout swings 360°.
- Lever handle shall return to neutral position when faucet is turned off.
- Red and blue button on handle.
- Control mechanism shall be of the rotating stainless steel ball type with replaceable non-metallic seats operating in stainless steel lined sockets.
- Model 441 series with spray attachment has anti-siphon device as integral part of valve body.
- Quick Snap® vegetable sprayer hose with matching finish sprayhead on model 441 series - 45" (1143mm) long hose.
- 3/8" O.D. straight, staggered copper supply tubes - 5 5/8" (143 mm) and 7" (178 mm) long supplied with 1/2"-14 NPSM adapters.

WARRANTY

- Lifetime Faucet and Finish Limited Warranty to the original consumer purchaser to be free from defects in material and workmanship.
- 5 Year Limited Warranty for usage in all industrial, commercial and business applications.

COMPLIES WITH:

- ASME A112.18.1 / CSA B125.1
- Indicates ADA compliance to ICC/ANSI A117.1
- IAPMO Listed
- CSA Certified



Indianapolis, Indiana 46280
A Division of Masco Corporation of Indiana
© 2006 Masco Corporation of Indiana

American Standard

LOT 17 WTR

ENSUITE

STUDIO™

UNDERCOUNTER SINK

VITREOUS CHINA



BARRIER FREE

STUDIO UNDERCOUNTER SINK

- Vitreous china
- Rectangular undercounter mount sink
- Unglazed rim
- Front overflow
- Supplied with mounting kit (047194-0070A) and template (Faucet shown not included)



0614 000 Unglazed Rim

540 x 387mm (21-1/4" x 15-1/4")

Bowl size:

464mm (18-1/4") wide,
308mm (12-1/8") front to back,
171mm (6-3/4") deep

0618 000 Unglazed Rim

600 x 422mm (23-5/8" x 16-5/8")

Bowl size:

537mm (21-1/8") wide,
356mm (14") front to back,
152mm (6") deep

COMPLIANCE CERTIFICATIONS –

Meets or exceeds the following Specifications:

- ASME A112.19.2M for Vitreous China Fixtures.
- CAN/CSA B45 Series.

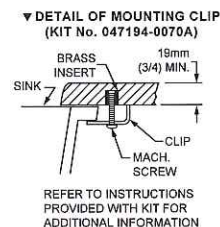
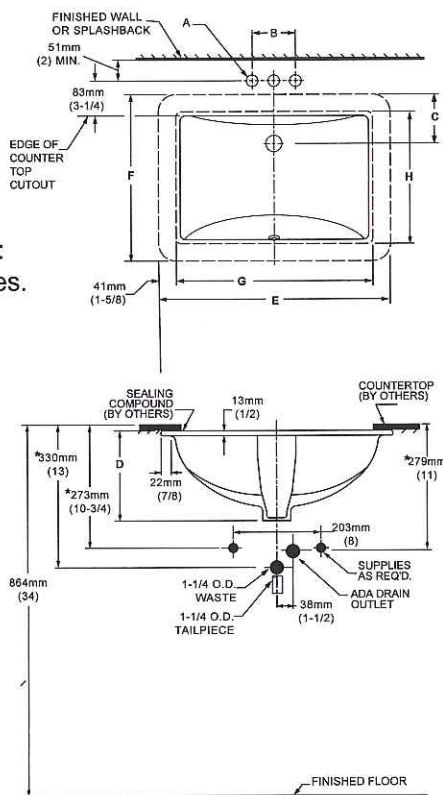
To Be Specified

- ☐ Colour:
- ☐ Faucet*:
- ☐ Faucet Finish:
- ☐ Supplies & Stops:
- ☐ Trap 1-1/4" (32 mm):

* See faucet section for additional models available



- Countertop 864mm (34") from finished floor. Sink installed 102mm (4") from front edge of countertop. Countertop thickness to be 25mm (1") maximum.
- MEETS THE AMERICAN DISABILITIES ACT GUIDELINES AND ANSI A117.1 ACCESSIBLE AND USEABLE BUILDINGS AND FACILITIES - CHECK LOCAL CODES.**



NOTES:

WE RECOMMEND USING SINK AS A TEMPLATE TO DETERMINE PROPER CONTOUR. CUT COUNTERTOP 38MM (1-1/2") INSIDE SINK CONTOUR. FAUCETS NOT INCLUDED AND MUST BE ORDERED SEPARATELY.

* DIMENSIONS SHOWN FOR LOCATION OF SUPPLIES AND "P" TRAP ARE SUGGESTED.

▼ UNDERCOUNTER MOUNTING KIT SUPPLIED WITH SINK.

IMPORTANT: Dimensions of fixtures are nominal and may vary within the range of tolerances established by ANSI Standard A112.19.2.

These measurements are subject to change or cancellation. No responsibility is assumed for use of superseded or voided pages.

FAUCET	A	B
CENTRESET	1-1/8 (29mm)	4 (102mm)
SPREAD	1-3/8 (35mm)	8 (203mm)

CAT. NO.	E	F	G	H	C	D
0614 000	540mm (21-1/4)	387mm (15-1/4)	464mm (18-1/4)	308mm (12-1/8)	114mm (4-1/2)	209mm (8-1/4)
0618 000	600mm (23-5/8)	422mm (16-5/8)	537mm (21-1/8)	356mm (14)	108mm (4-1/4)	209mm (8-1/4)