

DCR PHOENIX HOMES

TOWNHOUSE 20-24 - STANWICK - END UNIT

3 BEDROOM & MASTER RETREAT

KITCHEN / VANITIES

MOUNTING HEIGHT: 84

LINE 1

HARDWARE - STD & 1st UPGRADE

STANDARD WHITE INTERIOR

METAL DRAWER BOX

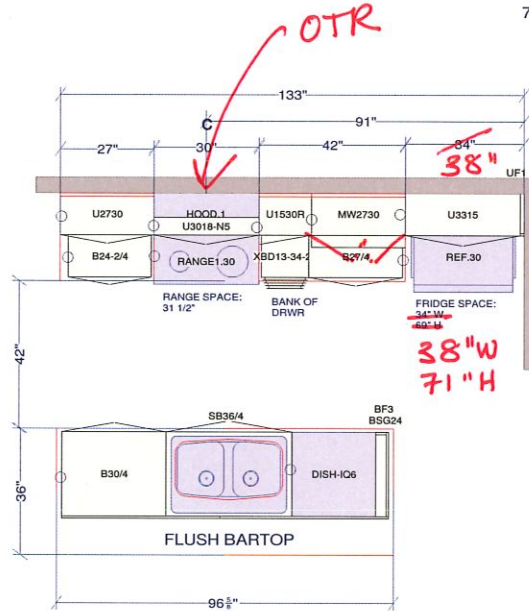
6 PCS - 5/8" KICK - FIN. BOTH ENDS

2 PCS - LOOSE FILLER - 6 x 96

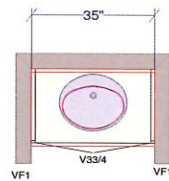
2 PCS - 90 DEG. CORNER MOULD

1 PCS - T-MOULD

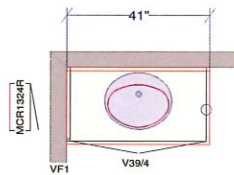
7 PCS - FLAT MOULDING



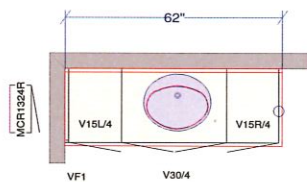
* DIMENSIONS TO
BE ADJUSTED TO ACCOMMODATE
LARGER FRIDGE OPENING



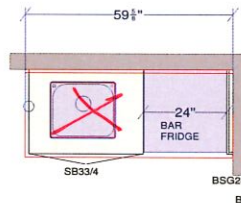
POWDER



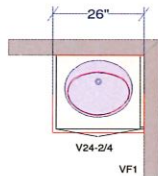
MAIN



ENSUITE



~~MASTER BDRM - RETREAT~~ BASEMENT BAR
* NO SINK *



OPTIONAL REC ROOM VANITY

All dimensions size designations given are subject to verification on job site and adjustment to fit job conditions.

SPECTRUM KITCHEN and BATH DESIGN

This is an original design and must not be released or copied unless applicable fee has been paid or job order placed.

DRAWN BY: LORI DISAVERIO, B.I.D

Designed: 2018-02-28
Printed: 2018-03-01

LOT 16 FB TOWNS
Block 1

TH 20 - 24 END STANWICK - 3 BDRM + MASTER RETREAT-

All

Drawing #: 1 No Scale.

WMH31017H

OVER-THE-RANGE MICROWAVE



DISHWASHER-SAFE TURNTABLE PLATE



Clean up spills on the turntable by simply putting it in the dishwasher.

2-SPEED, 300 CFM MOTOR CLASS*



Match the right amount of ventilation to the dish being prepared and quickly get rid of cooking odors with two different fan speed settings.

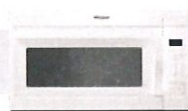
MICROWAVE PRESETS



Get just the right amount of heat and time, whether you're cooking or defrosting, with specific preset options.

OTHER FEATURES

- Add 30 seconds option
- Electronic touch controls
- Adjustable cooktop lighting



White
(W)



Black
(B)



Fingerprint Resistant
Stainless Steel (Z)



Silver
(S)

LOT 18 FB TOWNS

| MODEL | WMH31017HW | WMH31017HB | WMH31017HZ | WMH31017HS |
|-----------------|------------|------------|------------|------------|
| Max height (in) | 17-1/8" | 17-1/8" | 17-1/8" | 17-1/8" |
| Width (in) | 29-15/16" | 29-15/16" | 29-15/16" | 29-15/16" |
| Depth (in) | 15-9/16" | 15-9/16" | 15-9/16" | 15-9/16" |

Whirlpool®

*Performance varies based on installation.

®/™ ©2018 Whirlpool. All rights reserved. 1/18. WC170107A



ESSA

Single Handle Pull-Down Kitchen Faucet

LOT 18 FB TOWNS



Share

Model #: 9113-AR-DST
What does this model number mean?

Finish Shown: Arctic Stainless

Own this product?

Registering it helps us provide the best service. Want to save this product so you can quickly find it later?

Need help with your product?

Product Features and Benefits

- MagnaTite Docking uses a powerful integrated magnet to snap your faucet spray wand precisely into place and hold it there so it stays docked when not in use and doesn't droop over time
- Soft, rubber Touch-Clean spray holes allow you to easily wipe away calcium and lime build-up with the touch of a finger
- DIAMOND Seal Technology is less hassle to install and helps your faucet perform like new for life, reducing leak points and lasting twice as long as the industry standard
- Everything you need is together in one convenient box, including integrated InnoFlex PEX supply lines
- 1 or 3-hole 8" installation
- ADA Compliant
- The high-arc, gooseneck design swivels 360 degrees with a 20-in. retractable hose for added convenience during everyday kitchen tasks
- Lifetime Faucet and Finish Warranty

Featured Smart Features:

ADA Compliant

MagnaTite® Docking

DIAMOND™ Seal Technology

Product Support, Repair Parts & Tech Specs