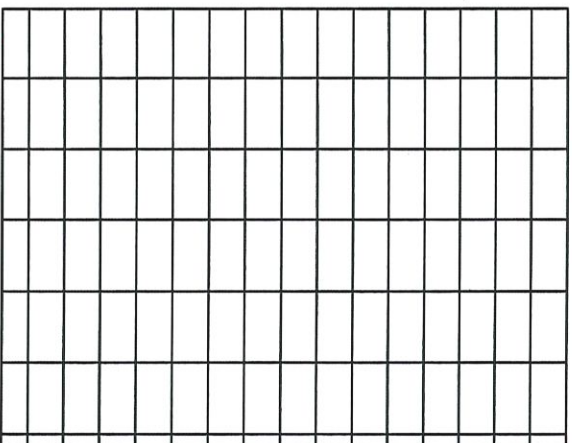
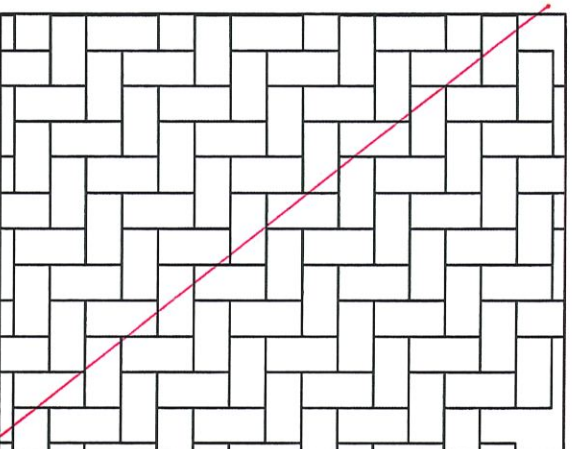


☐ BRICK PATTERN

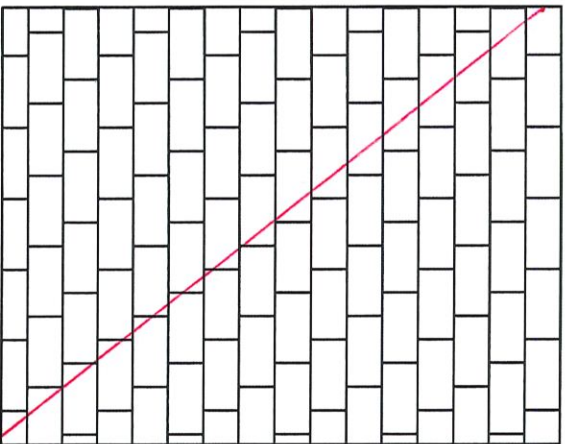


☒ STACKED PATTERN

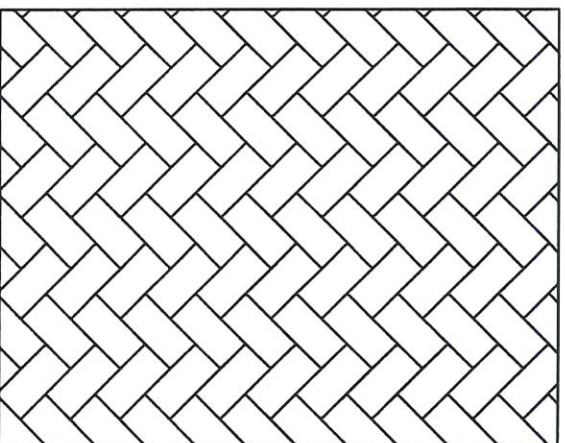
KITCHEN BACKSPLASH



☐ HERRINGBONE PATTERN 90



☐ STAGGERED PATTERN



☒ HERRINGBONE PATTERN 45

*FOYER & MASTER EN SUITE SHOWER WALLS *



DV

TILE PATTERN SELECTION FOR LOT 42

NOTES:

KS

HK

DV LOT 42 - FOYER

Stock Sizes - Nominal



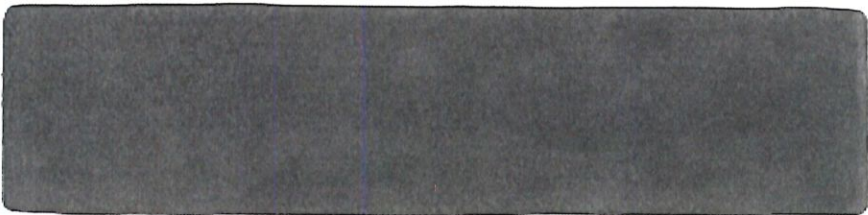
7cm x 28cm
(3" x 12")
MZ.BR.CMT.0312

Special Order

For information regarding other sizes, colours and finishes please contact us

Shade Variation V-2

Series: Bricco Colour: Cemento Finish: Matte



Description

The Bricco collection brings the beauty of exposed brick up to date. A versatile, contemporary range open to inspired combinations with different materials such as wood and concrete.

Usage

Floors
Walls
Residential
Commercial

Residential wall and floors;
commercial walls and medium traffic wear floors

Other Information

15% Pre-Consumer.

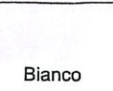


Bricco Product Guide

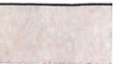
KS

HK

COLOUR RANGE



Bianco



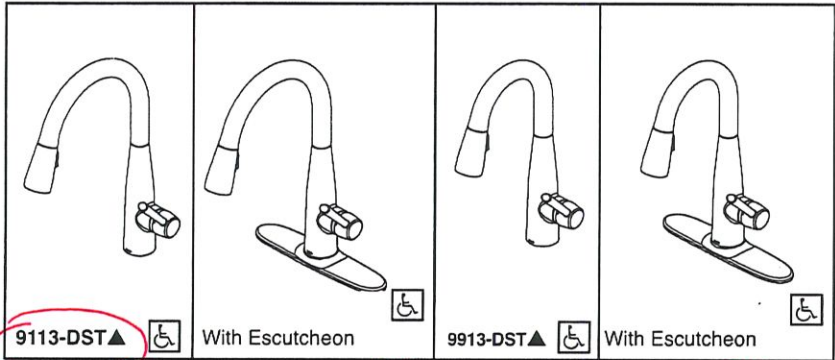
Grigio



Cemento



Carbone

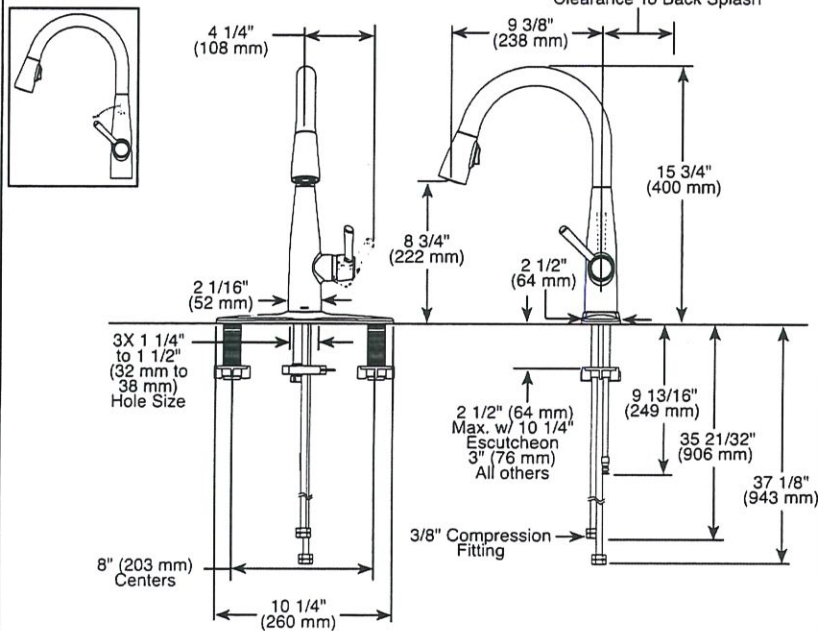


9113-DST▲ With Escutcheon 9913-DST▲ With Escutcheon

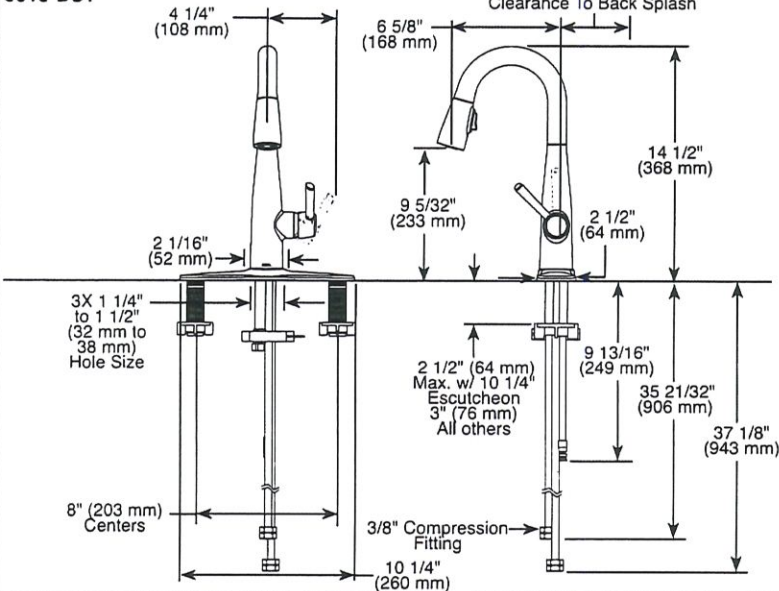
Submitted Model No.: **DV LOT 42 - STAINLESS FINISH**

Specific Features:

9113-DST



9913-DST



▲ Designate proper finish suffix

Delta reserves the right (1) to make changes in specifications and materials, and (2) to change or discontinue models, both without notice or obligation. Dimensions are for reference only. See current full-line price book or www.deltafaucet.com for finish options and product availability.

DSP-K-9113-DST Rev. B



see what Delta can do™

KITCHEN FAUCETS

- Essa™ Collection
- Single Handle Pull-Down

FEATURES:

- DIAMOND Seal® Technology
- MagnaTite® Magnetic Docking
- Touch-Clean® Sprayhead

STANDARD SPECIFICATIONS:

- Maximum 1.8 gpm @ 60 psi, 6.8 L/min @ 414 kPa
- One or three hole mount (Escutcheon included with kitchen models. For prep models, order separately)
- Diamond coated ceramic cartridge
- 3/8" O.D. straight, staggered PEX supply lines
- Spout rotates 360°
- Red/Blue indicator markings
- Two-function wand; Aerated stream or spray
- Dual integral check valves in sprayer

WARRANTY

- Parts and Finish - Lifetime limited warranty; or for commercial purchasers, 10 years for multi-family residential (apartments and condominiums) and 5 years for all other commercial uses, in each case from the date of purchase.
- Electronic Parts and Batteries (if applicable) - 5 years from the date of purchase; or for commercial purchasers, 1 year from the date of purchase. No warranty is provided on batteries.

COMPLIES WITH:

- ASME A112.18.1 / CSA B125.1
- ASME A112.18.6
- Indicates compliance to ICC/ANSI A117.1
- Verified compliant with .25% weighted average Pb content regulations.



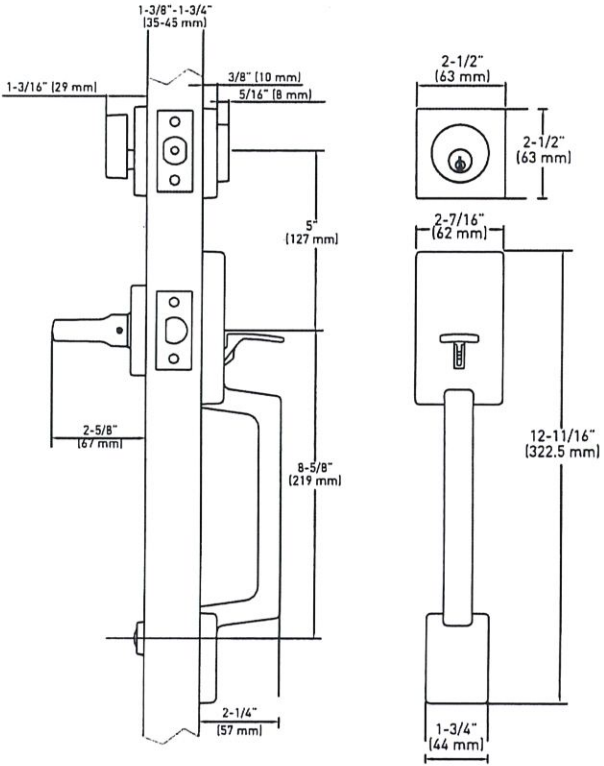
Delta Faucet Company

55 E. 111th Street, Indianapolis, IN 46280
350 South Edgeware Road, St. Thomas, ON N5P 4L1
© 2019 Delta Faucet Company

SPECIFICATIONS

- UNIVERSAL 6-IN-1 LATCHES
- DEADBOLT FITS 2-1/8" (54 mm) OR 1-1/2" (38 mm) BORE HOLE
- INCLUDES 1-3/4" x 2-1/4" FULL RADIUS CORNER "D" STRIKE STANDARD WITH HIGH SECURITY RADIUS CORNER STRIKE 1-1/8" x 2-3/4"
- FITS 1-3/8" TO 1-3/4" (35 mm - 45 mm) THICK DOORS
- COMPATIBLE WITH BOTH PREMIER AND PROFESSIONAL SERIES LOCKSETS

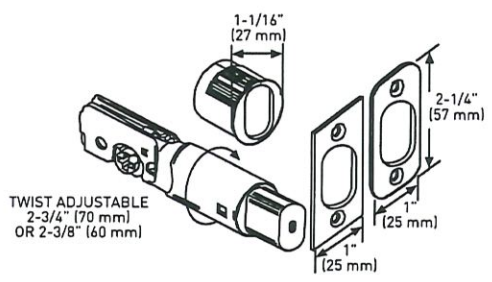
DV LOT 42



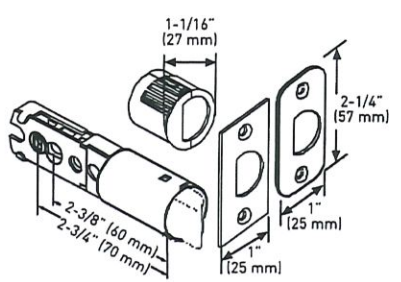
LIMITED LIFETIME MECHANICAL & 5 YEAR FINISH WARRANTY



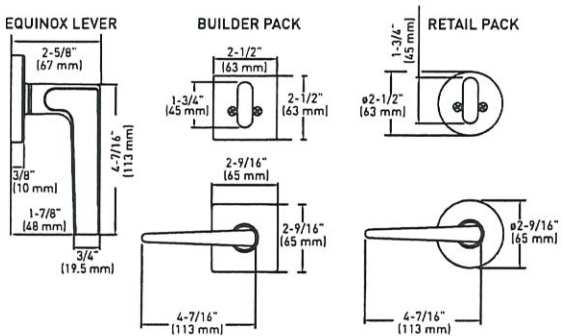
6-IN-1 ADJUSTABLE DEADBOLT LATCH



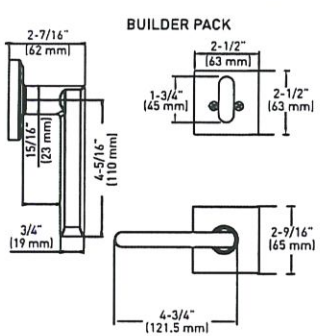
6-IN-1 FIXED HANDLESET LATCH



EQUINOX INSIDE LEVER TRIM



VEGA INSIDE LEVER TRIM



FULL LIP RADIUS STRIKE

HIGH SECURITY STRIKE

BUILDER PACK		CASE QTY.
WITH EQUINOX SQUARE ROSE LEVER TRIM		
SATIN NICKEL 15	33-0766	6
MATTE BLACK 19*	33-0782*	6
POLISHED CHROME 26	33-0726	6
SATIN CHROME 26D	33-0746	6
*WITH VEGA SQUARE ROSE LEVER TRIM		
RETAIL PACK		
WITH EQUINOX ROUND ROSE LEVER TRIM		
SATIN NICKEL 15	34-FV0766	4
POLISHED CHROME 26	34-FV0726	4

MEASUREMENTS SUBJECT TO A 3% VARIANCE
MEASUREMENTS ARE FOR REFERENCE ONLY. TAYMOR RESERVES THE RIGHT TO CHANGE THE PRODUCT SPECS WITHOUT NOTICE.
FOR PRODUCT WARRANTY, PLEASE VISIT TAYMOR WEBSITE FOR DETAILS

KS HK





see what Delta can do™

BATHROOM FAUCETS

- Modern Series
- Single Handle Deck Mount

STANDARD SPECIFICATIONS:

- Max. flow rate 1.2 gpm @ 60 psi, 4.5 L/min @ 414 kPa
- GPM models provide 1.0 gpm @ 60 psi, 3.8 L/min @ 414 kPa
- HGM models provide 0.5 gpm @ 60 psi, 1.9 L/min @ 414 kPa
- One or three hole mount (Escutcheon optional, not included)
- Control mechanism is the ceramic disc cartridge with temperature limiter
- Red/blue indicator markings
- Control handle shall return to neutral position when valve is turned off
- Solid brass body
- Lift rod hole plug included
- 1/4" threaded stud mounting
- Models have 50/50 pop-up type fitting with plated flange and stopper
- Models with suffix "MPU" have metal drain with pop-up type fitting with plated flange and stopper

WARRANTY

- Parts and Finish - Lifetime limited warranty; or for commercial purchasers, 10 years for multi-family residential (apartments and condominiums) and 5 years for all other commercial uses, in each case from the date of purchase.
- Electronic Parts and Batteries (if applicable) - 5 years from the date of purchase; or for commercial purchasers, 1 year from the date of purchase. No warranty is provided on batteries.

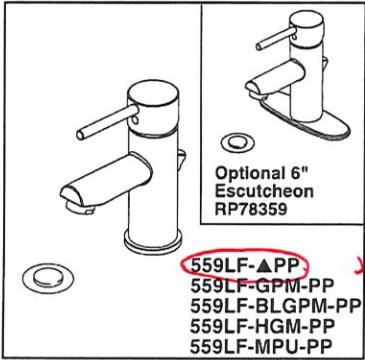


COMPLIES WITH:

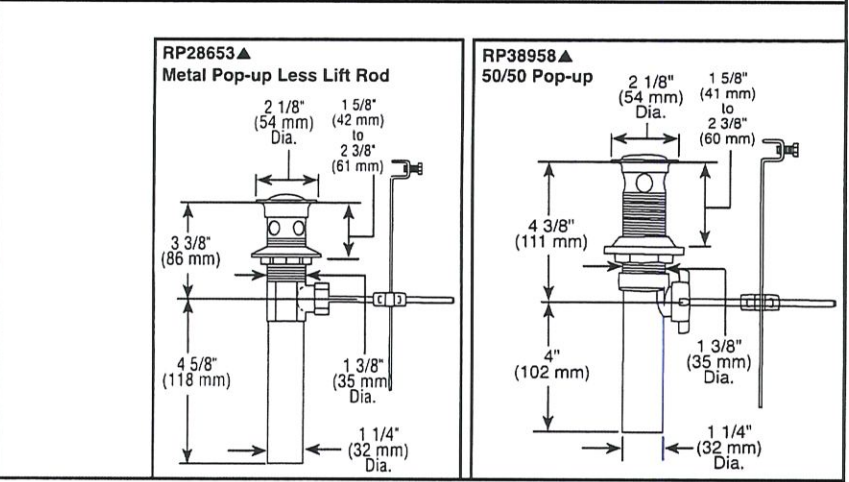
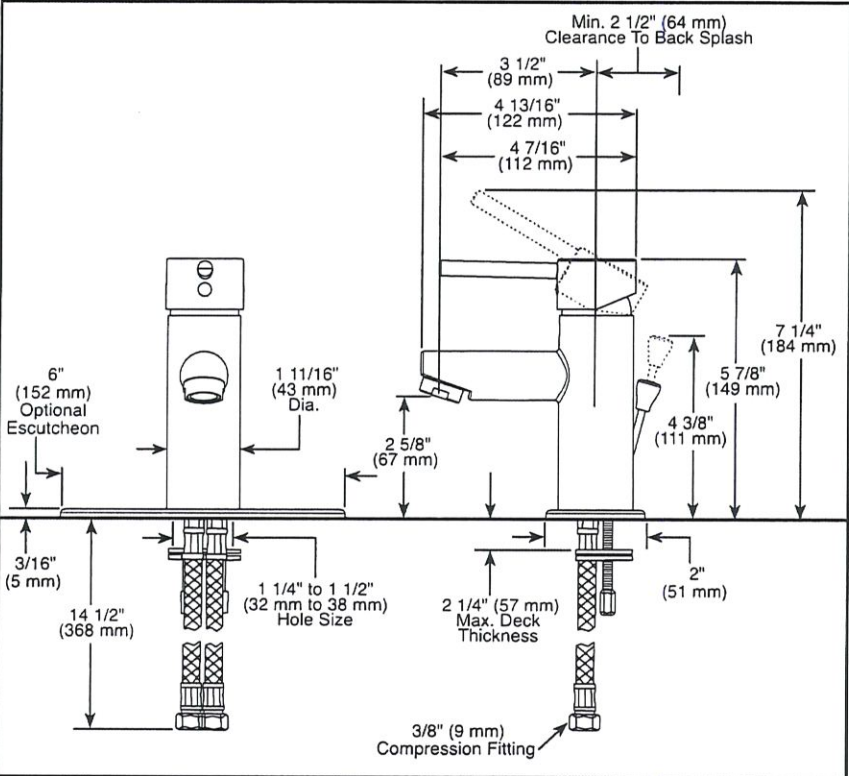
- ASME A112.18.1 / CSA B125.1
- ASME A112.18.2 / CSA B125.2
- ☐ Indicates compliance to ICC/ANSI A117.1- Valve control only
- EPA WaterSense® - Applies to 559LF-PP, 559LF-GPM-PP, 559LF-BLGPM-PP and 559LF-MPU-PP only



Delta Faucet Company
55 E. 111th Street, Indianapolis, IN 46280
350 South Edgeware Road, St. Thomas, ON N5P 4L1
© 2020 Delta Faucet Company



Submitted Model No.: DV 42 - MASTER ENCLITE
Specific Features: _____



▲ Designate Proper Finish Suffix

Delta reserves the right (1) to make changes in specifications and materials, and (2) to change or discontinue models, both without notice or obligation. Dimensions are for reference only. See current full-line price book or www.deltafaucet.com for finish options and product availability.

DSP-L-559LF-PP Rev. H

KS

CORE

OMBRA

WALL

Ombra is the perfect combination of form and function with its capacitive touch controls and optional hybrid baffle filters. Ombra features a powerful 600 CFM blower with our exclusive Airflow Control Tech-

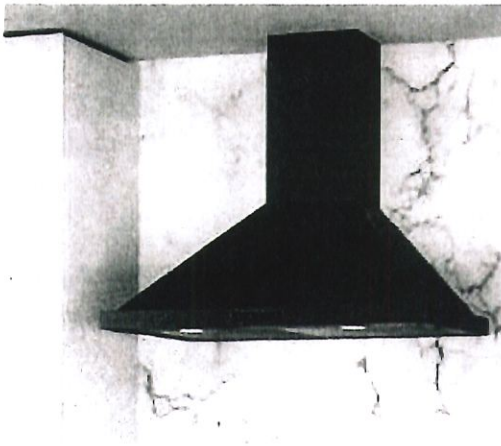
nology™ (ACT™) to meet local code requirements. Available in sleek black stainless steel and stainless steel.

ZEPHYR
ZEPHYRONLINE.COM

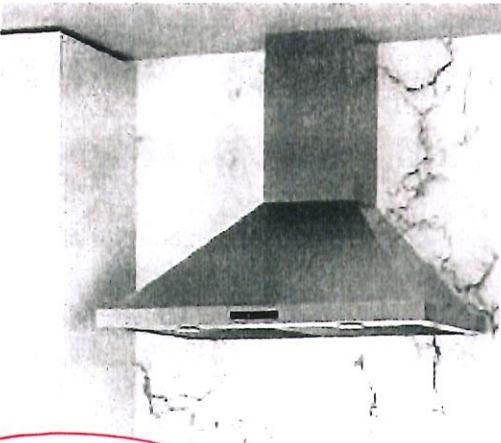
ACT™

	INTERNAL BLOWER STANDARD	INTERNAL BLOWER with ACT™ AIRFLOW CONTROL TECHNOLOGY™**	
Min. - Max. CFM	200 - 600	200 - 390	200 - 290
Min. - Max. Sones	1 - 6	1 - 4	1 - 3

*AIRFLOW CONTROL TECHNOLOGY™ (ACT™) is an exclusive feature built into specific Zephyr hoods which can limit the maximum blower CFM to meet local code requirements.



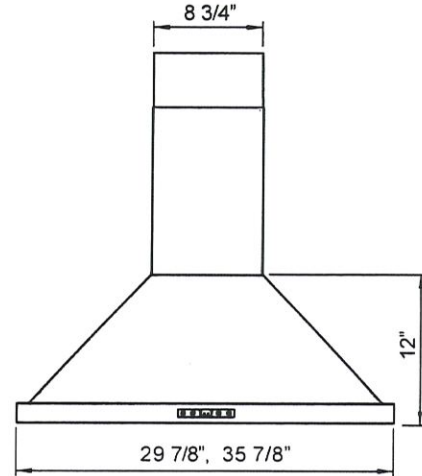
Shown in Black Stainless Steel



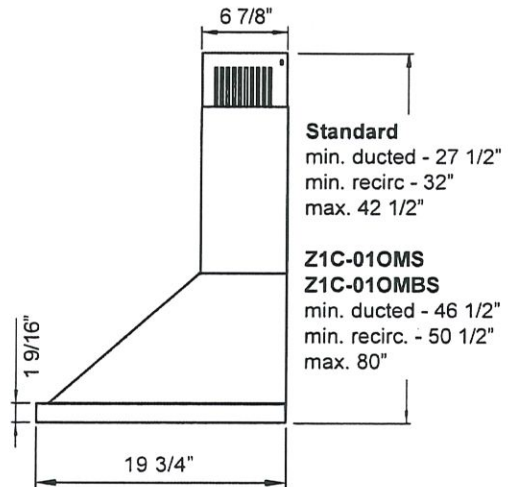
Shown in Stainless Steel

DV LOT 42

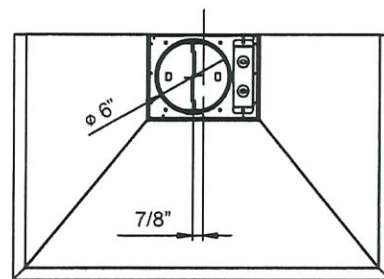
KS HK



FRONT



SIDE



TOP

DV LOT 42



MODEL		
Stainless Steel	ZOM-E30AS	ZOM-E36AS
Black Stainless Steel	ZOM-E30ABS	ZOM-E36ABS
Size	30"	36"
Blower CFM (Min. - Max.)	200 - 600	200 - 600
Sones (Min. - Max.)	1 - 6	1 - 6
ACT 390 CFM (Min. - Max.)	200 - 390	200 - 390
ACT 390 Sones (Min. - Max.)	1 - 4	1 - 4
ACT 290 CFM (Min. - Max.)	200 - 290	200 - 290
ACT 290 Sones (Min. - Max.)	1 - 3	1 - 3
FEATURES		
ACT™ Technology	Yes	Yes
Controls	Capacitive Touch	Capacitive Touch
Speed Levels	4*	4*
Auto Delay-Off	Yes	Yes
Lighting	Halogen, 35W x2	Halogen, 35W x2
Dual-Level Lighting	Yes	Yes
Filters	Aluminum Mesh x2	Aluminum Mesh x2
Recirculating Option	Yes	Yes
Duct Cover Extension Option	Yes, Up to 12' Ceiling	Yes, Up to 12' Ceiling
DUCT SPECIFICATIONS		
Vertical Internal Blower	6" Round	6" Round
Horizontal Internal Blower	NA	NA
AC POWER	120V, 60Hz at Max. 3.5A	120V, 60Hz at Max. 3.5A
OPTIONAL ACCESSORIES		
Recirculating Kit	ZRC-01OM	ZRC-01OM
Duct Cover Extension	Z1C-01OMS (ss) Z1C-01OMBS (black ss)	Z1C-01OMS (ss) Z1C-01OMBS (black ss)
Bloom™ GU10 LED	ZOB0040	ZOB0040
Hybrid Baffle Filter Kit	ZOF-B002	ZOF-B002
Make-Up Air Kit	MUA006A	MUA006A
MOUNTING HEIGHT RANGE**		
	26" - 34"	26" - 34"
WARRANTY		
	3 years parts, 1 year labor	3 years parts, 1 year labor

CEILING HEIGHT		8'	8.5'	9'	9.5'	10'	10.5'	11'	12'
STANDARD DUCT COVER	Ducted Mounting Height**	26" - 33.5"	26" - 34"	29.5" - 34"	NA	NA	NA	NA	NA
	Recirc Mounting Height**	26" - 28.5"	26" - 34"	29.5" - 34"	NA	NA	NA	NA	NA
DUCT COVER EXTENSION	Ducted Mounting Height**	NA	NA	26" - 30.5"	26" - 34"	26" - 34"	26" - 34"	26" - 34"	28" - 34"
	Recirc Mounting Height**	NA	NA	26" - 26"	26" - 32"	26" - 34"	26" - 34"	26" - 34"	28" - 34"

*When ACT™ is enabled the maximum speed levels will change. ACT 390 CFM = 3 speeds and ACT 290 CFM = 2 speeds.
**Mounting height refers to distance between top of a 36" tall cooking surface and bottom of hood.

ACT AIRFLOW CONTROL TECHNOLOGY™ (ACT™)
is an exclusive feature built into specific Zephyr hoods which can limit the maximum blower CFM to meet local code requirements.

Specifications subject to change, check zephyronline.com for up-to-date information.
Zephyr Ventilation | 2277 Harbor Bay Parkway, Alameda, CA 94502 | 888.880.VENT

SEP18.0101



DV 42-MASTER ENSUITE

American Standard

BOXE™
ABOVE-COUNTER SINK

VITREOUS CHINA

BOXE ABOVE-COUNTER SINK

- ☒ 0504 001 Centre Hole Only
- ☐ 0504 008 Faucet Holes on 8" (203 mm) centres
- ☐ 0504 000 Less Faucet Holes

- Contemporary geometric above counter vessel design
- Generous bowl depth with centre drain
- Available with 8" faucet holes, centre hole only or less faucet holes
- Front overflow
- Supplied with cut-out template

Nominal Dimensions:

23-1/4" X 17-1/2" (591 X 445mm)
4-3/8" (110mm) height above counter

Bowl sizes:

18-3/4" x 11-1/4" (476 x 286mm)
4-1/4" (108mm) deep

Compliance Certifications -

Meets or Exceeds the Following Specifications:

- ASME A112.19.2M for Vitreous China Fixtures
- CAN/CSA B45 series
- A1995 National Building Code, section 3.7 and CAN/CSA - B651-M90 and OBC 3.7

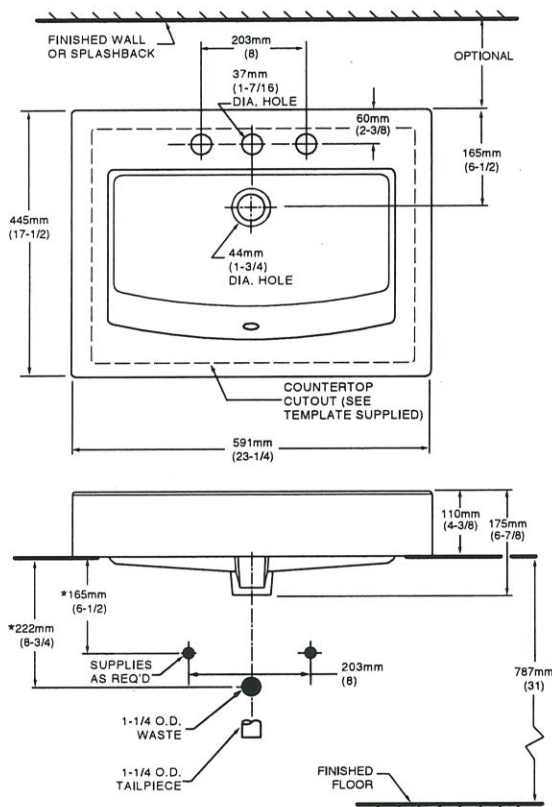
To Be Specified:

- ☐ Colour:
- ☐ Faucet*:
- ☐ Faucet Finish:
- ☐ Supplies:
- ☐ 1-1/4" Trap:

Recommended:

- ☐ 9386 000 Cardiff Console Table Frame
- ☐ 9387 504 Laminated Marble Table Top
- pre-cut for BOXE sink

* See faucet section for additional models available



NOTES:

*DIMENSIONS SHOWN FOR LOCATION OF SUPPLIES AND "P" TRAP ARE SUGGESTED. FAUCETS NOT INCLUDED WITH FIXTURE AND MUST BE ORDERED SEPARATELY. FOR COUNTERTOP CUTOUT AND INSTALLATION INSTRUCTIONS USE TEMPLATE SUPPLIED WITH SINK.

IMPORTANT: Dimensions of fixtures are nominal and may vary within the range of tolerances established by ANSI Standard A112.19.2. These measurements are subject to change or cancellation. No responsibility is assumed for use of superseded or voided pages.

BAS-111