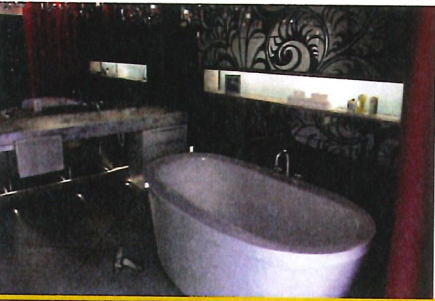


## MAAX SUBMITTAL SPECIFICATIONS

# JAZZ F

MODEL NUMBER 105359

DIMENSIONS: 66" x 36" x 24" Acrylic  
Water Capacity: Maximum 76 G Minimum 58 G



Project : DV 43 - MASTER ENSUITE  
Contractor : .....  
MAAX Representative : ..... Tel : .....  
Date : .....

[www.maax.com](http://www.maax.com)

Vivez l'expérience  
**MAAX**<sup>®</sup>  
Enjoy the experience

### STANDARD FEATURES

- Unique feature: air massage system available
- Deep soak bathing for ultimate relaxation
- Relaxing backrest
- Deck for faucet
- 4 self-leveling legs for ease of installation
- Center drain
- Freestanding installation


### OPTIONS

- Fjord bathtub faucet with hand shower
- Water pipe inlets (Fjord)
- Fjord 8-in. widespread lavatory
- White foam cushion
- Two chromatherapy lights
- Flexible main hose 15 ft for electronic control

### UNIQUE FEATURES

- 1 Tub - 2 Pieces

### SYSTEMS

 Aerofeel

### DOOR SELECTION

Combine with MAAX's complete shower door offering visit [www.maax.com](http://www.maax.com)

### CERTIFICATIONS

Maax products adhere to one or more of the following certifications:



2012-05-05



DV 43 - MASTER ENSUITE + POWDER

American Standard



BARRIER FREE

STUDIO™  
UNDERCOUNTER SINK  
VITREOUS CHINA

#### STUDIO UNDERCOUNTER SINK

- Vitreous china
- Rectangular undercounter mount sink
- Unglazed rim
- Front overflow
- Supplied with mounting kit (047194-0070A) and template (Faucet shown not included)

- ☐ **0614 000 Unglazed Rim**  
540 x 387mm (21-1/4" x 15-1/4")

Bowl size:  
464mm (18-1/4") wide,  
308mm (12-1/8") front to back,  
171mm (6-3/4") deep

- ☐ **0618 000 Unglazed Rim**  
600 x 422mm (23-5/8" x 16-5/8")

Bowl size:  
537mm (21-1/8") wide,  
356mm (14") front to back,  
152mm (6") deep

#### COMPLIANCE CERTIFICATIONS –

Meets or exceeds the following Specifications:

- ASME A112.19.2M for Vitreous China Fixtures.
- CAN/CSA B45 Series.

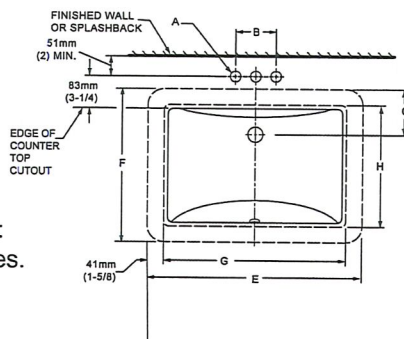
#### To Be Specified

- ☐ Colour:
- ☐ Faucet\*:
- ☐ Faucet Finish:
- ☐ Supplies & Stops:
- ☐ Trap 1-1/4" (32 mm):

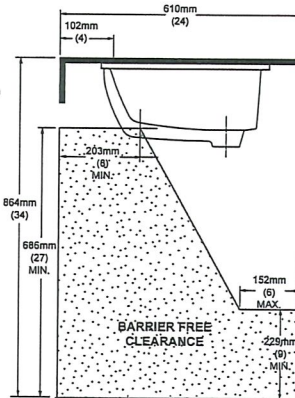
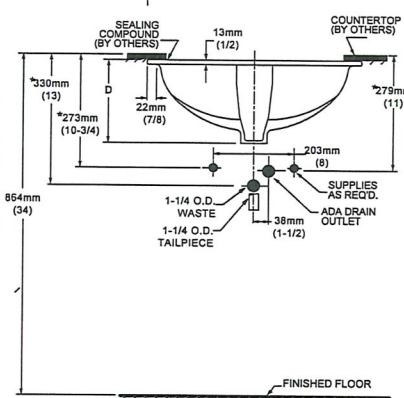
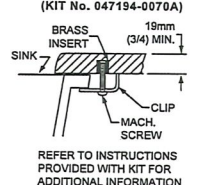
\* See faucet section for additional models available



- Countertop 864mm (34") from finished floor. Sink installed 102mm (4") from front edge of countertop. Countertop thickness to be 25mm (1") maximum.
- MEETS THE AMERICAN DISABILITIES ACT GUIDELINES AND ANSI A117.1 ACCESSIBLE AND USEABLE BUILDINGS AND FACILITIES - CHECK LOCAL CODES.**



#### DETAIL OF MOUNTING CLIP (KIT No. 047194-0070A)



#### NOTES:

WE RECOMMEND USING SINK AS A TEMPLATE TO DETERMINE PROPER CONTOUR. CUT COUNTERTOP 38MM (1-1/2") INSIDE SINK CONTOUR. FAUCETS NOT INCLUDED AND MUST BE ORDERED SEPARATELY.

\* DIMENSIONS SHOWN FOR LOCATION OF SUPPLIES AND "P" TRAP ARE SUGGESTED.

▼ UNDERCOUNTER MOUNTING KIT SUPPLIED WITH SINK.

IMPORTANT: Dimensions of fixtures are nominal and may vary within the range of tolerances established by ANSI Standard A112.19.2.

These measurements are subject to change or cancellation. No responsibility is assumed for use of superseded or voided pages.

FAUCET	A	B
CENTRESET	1-1/8 (29mm)	4 (102mm)
SPREAD	1-3/8 (35mm)	8 (203mm)

CAT. NO.	E	F	G	H	C	D
0614 000	540mm (21-1/4)	387mm (15-1/4)	464mm (18-1/4)	308mm (12-1/8)	114mm (4-1/2)	209mm (8-1/4)
0618 000	600mm (23-5/8)	422mm (16-5/8)	537mm (21-1/8)	356mm (14)	108mm (4-1/4)	209mm (8-1/4)

Nm Sm

falmec

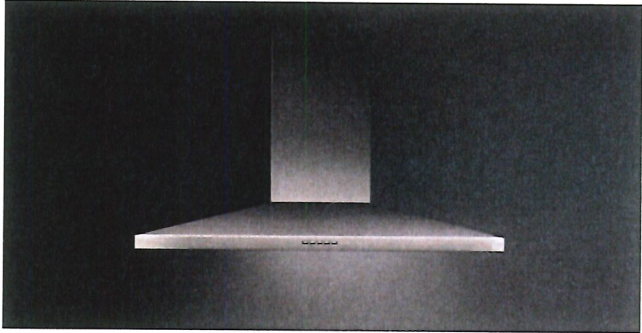
VULCANO

DV 43

Version  
FPVUX36W6SS / VulcanoXL  
Wall 36" (90cm) 600 CFM

Collection  
Potenza

EAN code  
8034122502687



Photograph is for information purposes only  
May not correspond to the selected version

FEATURES

Scotch brite stainless steel (AISI 304)  
Electronic control  
LED lighting  
Optional charcoal filter  
Labyrinth filter

OPTIONAL ACCESSORIES

KACL.510#I  
Extension H700 - Wall  
KACL.512#I  
Extension H960 - Wall  
KACL.815  
Protective cleaning cloths for stainless steel (box 10 pcs)

TECHNICAL FEATURES

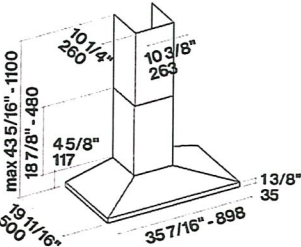
Installation type  
Wall  
Dimensions  
36 / 90 cm  
Finish  
Scotch brite stainless steel (AISI 304)  
Motor  
600 CFM  
Type of control  
Electronic control  
Speed settings  
4  
Lighting  
Led 2x1,2 W - 3200 K  
Minimum distance  
Gas hob: 24 in  
Electric hob: 21 in

PACKAGING:WEIGHTS AND VOLUMES

Gross weight  
49 lbs  
Net weight  
38 lbs  
Volumes  
11 ft³  
Packaging size  
Length  
40 in  
Height  
21 in  
Depth  
24 in

CONSUMPTION AND CONNECTION FEATURES

Maximum consumption  
430 W  
Plug type  
Hood comes standard with Nema 5-15P power cord



Nm Sm

DV 43

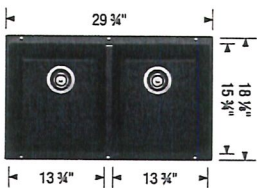
Product Specification Sheet

BLANCO PRECIS U 2

SILGRANIT®



PRODUCT DIMENSIONS



BLANCO PRECIS U 2      Colour Finish      Model No.



White      401705



Truffle      401179



Metallic Gray      401681



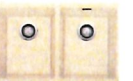
Concrete Gray      402265



Cinder      401415



Café      400581



Biscuit      401818



Anthracite      400580

Nm Sm

FEATURES / SPECIFICATIONS

- Made in Canada and Germany
- SILGRANIT® - natural granite composite material
- Exceptional resistance to heat, scratches and impact
- Repellant material – does not absorb any liquids, acids or stains
- Non-porous surface does not require use of any harsh chemicals
- Includes Hygienic+Plus surface protection formula against bacteria
- Rear-positioned and centred drain hole maximizes usable bowl and cabinet storage
- Virtually flat sink bottom prevents glassware from tipping over
- Limited Lifetime Warranty

DESIGN AND PLANNING TIPS

Cabinet Size: 33" (840 mm)  
Bowl depth: 8" (205 mm) / 8" (205 mm)  
Depending on cabinet construction, a different cabinet size may be required.  
Consult the cabinet manufacturer.

WARRANTY

Limited Lifetime warranty

Code/Standards Compliance

BLANCO sinks and faucets are third-party tested and certified to CSA, cUPC, ANSI/ASME and NSF standards and listed by applicable certification bodies. For more information on individual product listings, contact our office or listing organization.

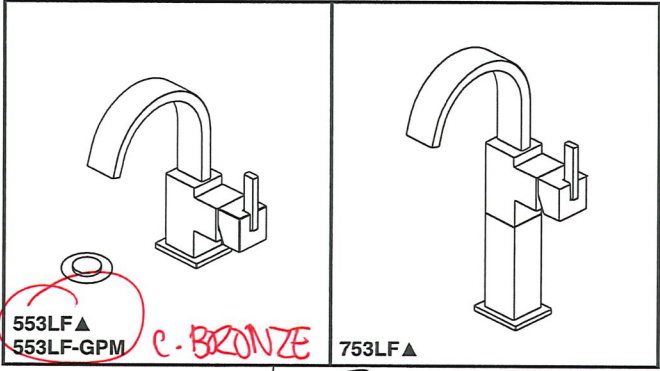
BLANCO CANADA  
100 Corporation Drive  
Brampton, ON L6S 6B5

Tel: 905 494 2400  
Fax: 905 494 2425  
www.blancocanada.com

Toll Free: 1 877 425 2626  
Toll Free: 1 877 825 2626

© 2016 BLANCO CANADA





see what Delta can do™

## BATHROOM FAUCET

- Vero® Bath Collection
- Single Handle Deck Mount
- Single Hole Riser Model

### STANDARD SPECIFICATIONS:

- Max. flow rate 1.2 gpm @ 60 psi, 4.5 L/min @ 414 kPa
- GPM indicates max 1.0 gpm @ 60 psi, 3.8 L/min @ 414 kPa
- Solid brass fabricated body
- Single hole mount
- Metal drain with push pop-up type fitting with plated flange and stopper (Just for 553LF series models)

### WARRANTY

- Parts and Finish - Lifetime limited warranty; or for commercial purchasers, 10 years for multi-family residential (apartments and condominiums) and 5 years for all other commercial uses, in each case from the date of purchase.
- Electronic Parts and Batteries (if applicable) - 5 years from the date of purchase; or for commercial purchasers, 1 year from the date of purchase. No warranty is provided on batteries.



### COMPLIES WITH:

- ASME A112.18.1 / CSA B125.1
- ASME A112.18.2 / CSA B125.2

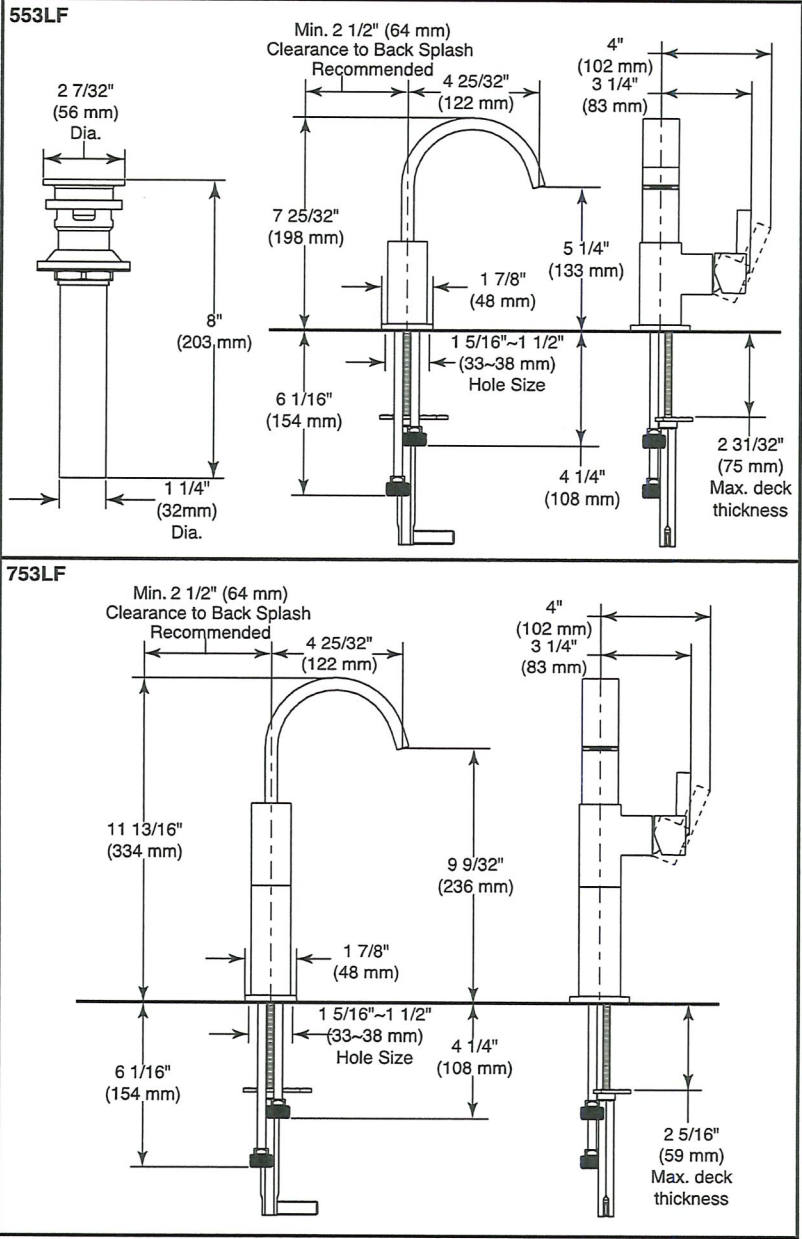


- Indicates compliance to ICC/ANSI A117.1 - Valve control only
- EPA WaterSense® - Applies to 553LF and 753LF only
- Verified compliant with 0.25% weighted average Pb content regulations.

MASTER ENSUITE

DV 43

Nm Sm

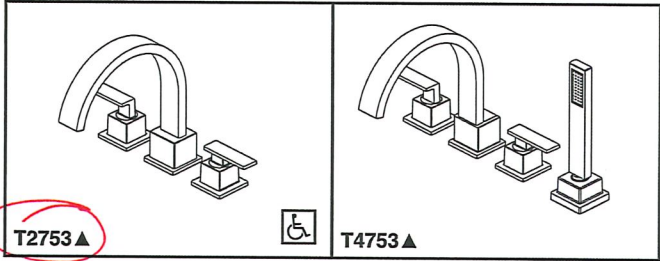


▲ Designate proper finish suffix

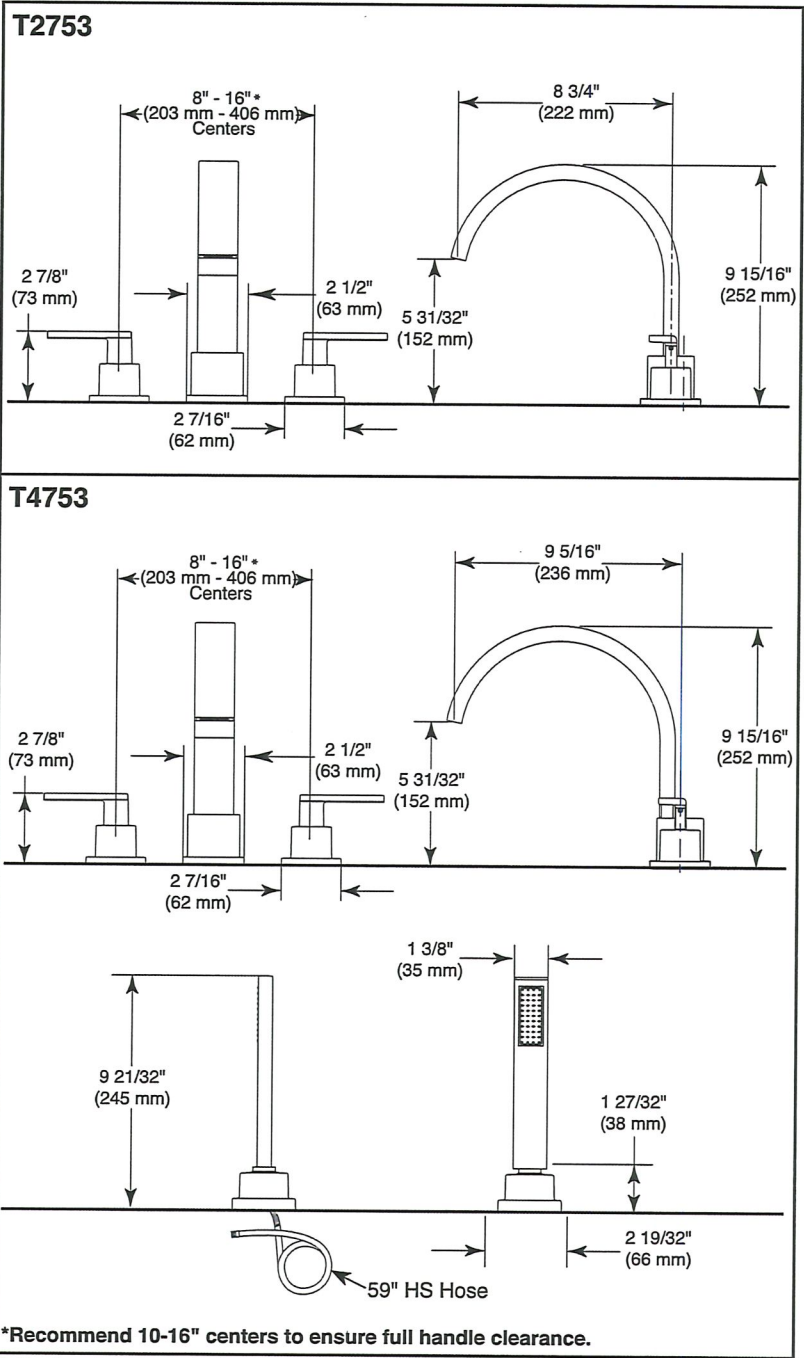
Delta reserves the right (1) to make changes in specifications and materials, and (2) to change or discontinue models, both without notice or obligation. Dimensions are for reference only. See full-line price book or [www.deltafaucet.com](http://www.deltafaucet.com) for finish options and product availability.

DSP-L-553LF Rev. G

**Delta Faucet Company**  
55 E. 111th Street, Indianapolis, IN 46280  
350 South Edgeware Road, St. Thomas, ON N5P 4L1  
© 2020 Delta Faucet Company



Submitted Model No.: **CHAMPAGNE BRONZE**  
 Specific Features: **Nm Sm**



**\*Recommend 10-16" centers to ensure full handle clearance.**  
 ▲ Designate proper finish suffix  
 Delta reserves the right (1) to make changes in specifications and materials, and (2) to change or discontinue models, both without notice or obligation. Dimensions are for reference only. See full-line price book or [www.deltafaucet.com](http://www.deltafaucet.com) for finish options and product availability.



## ROMAN TUB/WHIRLPOOL FAUCET TRIM

- Vero™ Collection
- Three Hole Installation (T2753 Series)
- Four Hole Installation (T4753 Series)

### STANDARD SPECIFICATIONS

- Hand shower max flow rate 1.75 gpm @ 80 psi, 6.6 L/min @ 550 kPa
- Trim only for two handle Roman Tub faucet for concealed mounting
- Temperature and volume controlled with handles
- Rough-In kit must also be ordered to complete installation
  - R4707 for four hole
  - R2700 or R2707 for three hole
  - RP23601 for three hole 10" fixed installation
 There are separate specification sheets on each rough-in kit if more details are required
- Hand shower includes double check valves for backflow prevention (T4753)

### WARRANTY

- Parts and Finish - Lifetime limited warranty; or for commercial purchasers, 10 years for multi-family residential (apartments and condominiums) and 5 years for all other commercial uses, in each case from the date of purchase.
- Electronic Parts and Batteries (if applicable) - 5 years from the date of purchase; or for commercial purchasers, 1 year from the date of purchase. No warranty is provided on batteries.



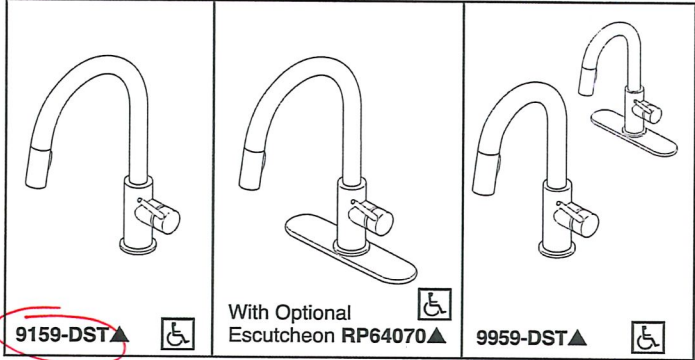
### COMPLIES WITH:

- ASME A112.18.1 / CSA B125.1
- Indicates compliance to
  - ICC/ANSI A117.1 - Valve control only
  - EPA WaterSense® - Applies to T4753▲ only

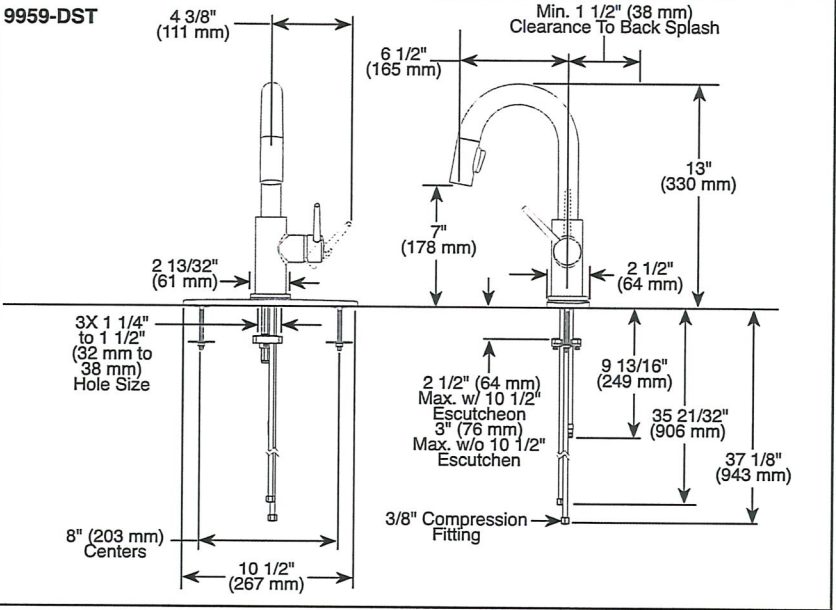
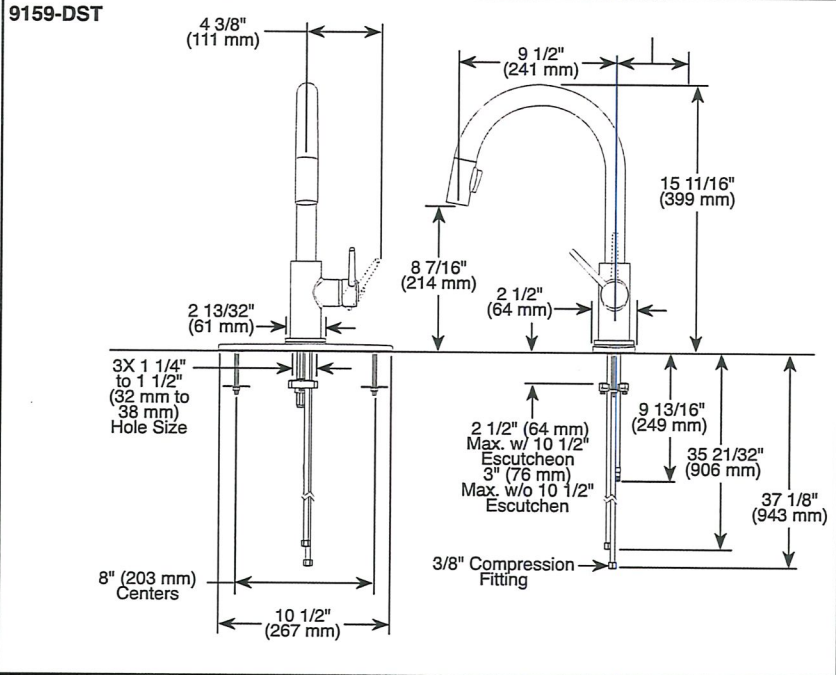
**DV 43**  
**MASTER ENROUTE**

**Delta Faucet Company**  
 55 E. 111th Street, Indianapolis, IN 46280  
 350 South Edgeware Road, St. Thomas, ON N5P 4L1  
 © 2019 Delta Faucet Company





Submitted Model No.: **CHAMPAGNE BRONZE**  
Specific Features: **Nm Sm**



▲ Designate proper finish suffix

Delta reserves the right (1) to make changes in specifications and materials, and (2) to change or discontinue models, both without notice or obligation. Dimensions are for reference only. See current full-line price book or [www.deltafaucet.com](http://www.deltafaucet.com) for finish options and product availability.

DSP-K-9159-DST Rev. F



see what Delta can do™

## KITCHEN FAUCETS

- Trinsic® Collection
- Single Handle Deck Mount
- 2-Function Pull-Down Sprayer

### FEATURES:

- MagnaTite® Magnetic System
- DIAMOND Seal® Technology
- Touch-Clean® Sprayhead

### STANDARD SPECIFICATIONS:

- Maximum 1.8 gpm @ 60 psi, 6.8 L/min @ 414 kPa
- One or three hole mount (escutcheon optional, not included)
- Spout rotates 360°
- Control mechanism shall be full-motion valve cartridge
- Two-function wand; Aerated stream or spray
- Red/blue indicator markings
- Dual integral check valves in sprayer
- Quick connect hoses

### WARRANTY

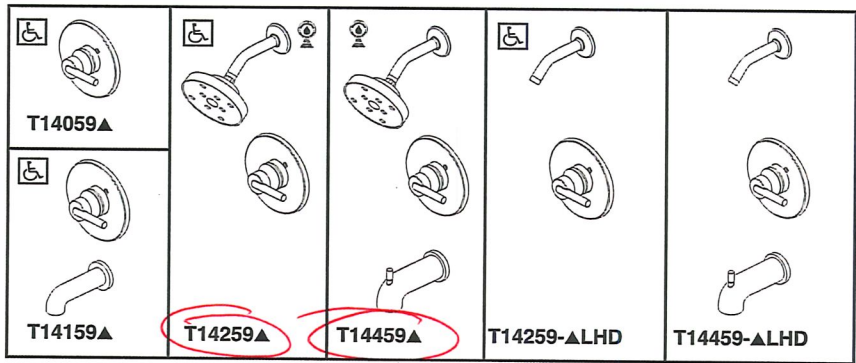
- Parts and Finish - Lifetime limited warranty; or for commercial purchasers, 10 years for multi-family residential (apartments and condominiums) and 5 years for all other commercial uses, in each case from the date of purchase.
- Electronic Parts and Batteries (if applicable) - 5 years from the date of purchase; or for commercial purchasers, 1 year from the date of purchase. No warranty is provided on batteries.

### COMPLIES WITH:

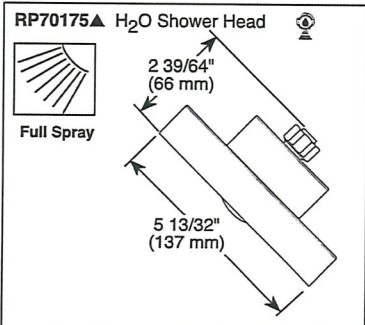
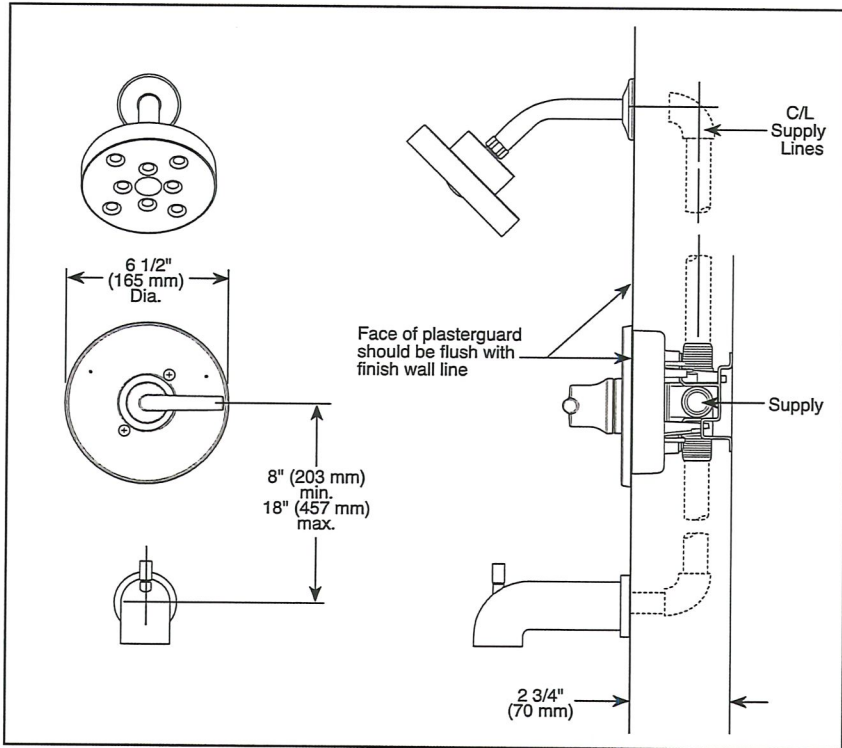
- ASME A112.18.1 / CSA B125.1
- ASME A112.18.6
- Indicates compliance to ICC/ANSI A117.1
- Verified compliant with .25% weighted average Pb content regulations.

DV 43

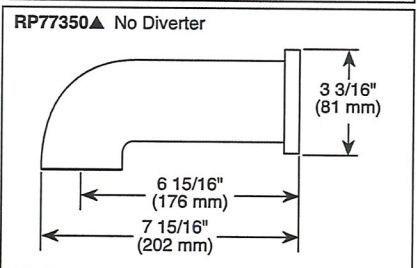
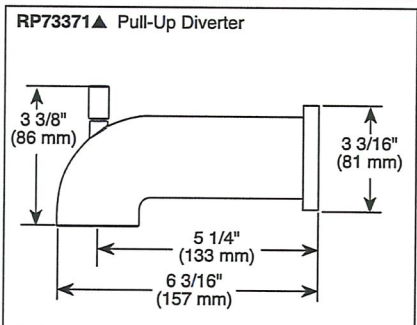
**Delta Faucet Company**  
55 E. 111th Street, Indianapolis, IN 46280  
350 South Edgeware Road, St. Thomas, ON N5P 4L1  
© 2019 Delta Faucet Company



Submitted Model No.: Nm Sm  
 Specific Features: \_\_\_\_\_



▲ Designate Proper Finish Suffix



Delta reserves the right (1) to make changes in specifications and materials, and (2) to change or discontinue models, both without notice or obligation. Dimensions are for reference only. See current full-line price book or [www.deltafaucet.com](http://www.deltafaucet.com) for finish options and product availability.

DSP-B-T14059 Rev. L



see what Delta can do™

## TUB AND SHOWER FAUCET TRIM

- Trinsic® Bath Collection
- Valve Only (T14059)
- Tub Only (T14159)
- Shower Only (T14259)
- Tub/Shower (T14459)

### FEATURES:

- Monitor® 14 Series pressure balanced single handle bath mixing valve trim
- Single function H<sub>2</sub>Okinetic® Technology shower head

### STANDARD SPECIFICATIONS:

- Maintains a balanced pressure of hot and cold water even when a valve is turned on or off elsewhere in the system
- For use with MultiChoice® Universal rough valve body (R10000 Series)
- Temperature only controlled with handle
- Field adjustable means to limit handle rotation into hot water zone
- 120° maximum handle rotation
- Maximum 1.75 gpm @ 80 psi, 6.6 L/min @ 550 kPa
- Tub port maximum flow rate 6.0 gpm @ 60 psi with R10000-UNBX
- Shower arm overall horizontal length = 5 1/2" (138 mm), including threaded ends
- Red/blue pad print temperature indicators on escutcheon
- "LHD" models indicate less showerhead
- 1/2" CWT slip-on spout adapter
- Stem extension kit RP77991 can be ordered to allow for an additional 1 3/4" wall thickness. RP77991 ships with chrom. escutcheon screws. For special finishes also order RP12630 escutcheon screws in desired finish.

### WARRANTY

- Parts and Finish - Lifetime limited warranty; or for commercial purchasers, 10 years for multi-family residential (apartments and condominiums) and 5 years for all other commercial uses, in each case from the date of purchase.
- Electronic Parts and Batteries (if applicable) - 5 years from the date of purchase; or for commercial purchasers, 1 year from the date of purchase. No warranty is provided on batteries.

### COMPLIES WITH:

- ASME A112.18.1 / CSA B125.1
- ASSE 1016
- Indicates compliance to ICC/ANSI A117.1 - Valve control only
- EPA WaterSense®

DV 43  
 ENSUITE #2 +  
 MAIN BATH

### Delta Faucet Company

55 E. 111th Street, Indianapolis, IN 46280  
 350 South Edgeware Road, St. Thomas, ON N5P 4L1  
 © 2018 Delta Faucet Company



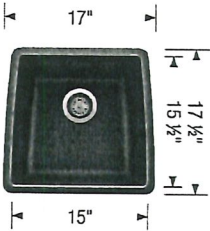


DV 43 - BAR SINK

Sink Specifications

PERFORMA U BAR  
SILGRANIT

Colour	SKU	
Anthracite	401841	Nm Sm
Café	401842	
Truffle	401843	
Cinder	401844	
Metallic Gray	401845	
White	402143	
Concrete Gray	402285	



Design and planning tips

- Min cabinet size: 21 in ( 535 mm cm )
- Bowl Depth: 9 in ( 230.0 mm )

Specifications:  
Sink template, Installation instructions, 3 1/2" (90 mm)  
stainless steel strainers

Depending on cabinet construction, a different cabinet  
size may be required. Consult the cabinet manufacturer.  
Codes/Standards: CSA B45.8-18/ IAPMO Z403-2018

Optional Accessories

CapFlow 517666

Warranty

Limited lifetime warranty on all sinks and faucets. One-year warranty on all accessories and soap dispensers.

Code/Standards Compliance

BLANCO sinks and faucets are third-party tested and certified to CSA, cUPC, ANSI/ASME, IAPMO and NSF standards and listed by applicable certification bodies. For more information on individual product listings, contact our office or listing organization.



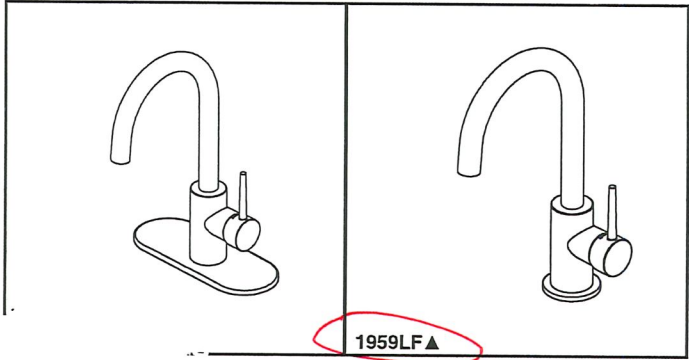
Need support? Learn more by watching our sink & faucet How-to videos:  
<https://www.blanco.com/ca-en/support/how-to-videos/>



BLANCO Canada Inc  
100 Corporation Drive  
Brampton ON L6S 6B5

Tel & Fax  
Tel: 905-494-2400 Toll free: 1-877-425-2626  
Fax: 905-494-2425 Toll free: 1-877-825-2626

While BLANCO strives to provide accurate information, all images and dimensions in this document are intended for reference only and are subject to change at any time without notice. This document is not intended for use as an installation guide. For technical installation details, refer to installation instructions provided with the product. BLANCO assumes no responsibility for the use of superseded or voided specifications.



see what Delta can do™

**BAR & PREP  
SINK FAUCETS**

- Contemporary
- Single Handle Deck Mount


**STANDARD SPECIFICATIONS**

- One or three hole mount (escutcheon optional, not included)
- Max flow rate 1.5 gpm @ 60 psi, 5.7 L/min @ 414 kPa
- Solid brass fabricated body
- Spout rotates 120°
- Hot/Cold logo on handle to indicate temperature
- Ceramic disc cartridge
- 5/16" staggered copper supply lines with 1/2" adapters
- ADA compliant lever handle
- Order RP77702 for optional escutcheon
- Order RP1001 for coordinating soap dispenser

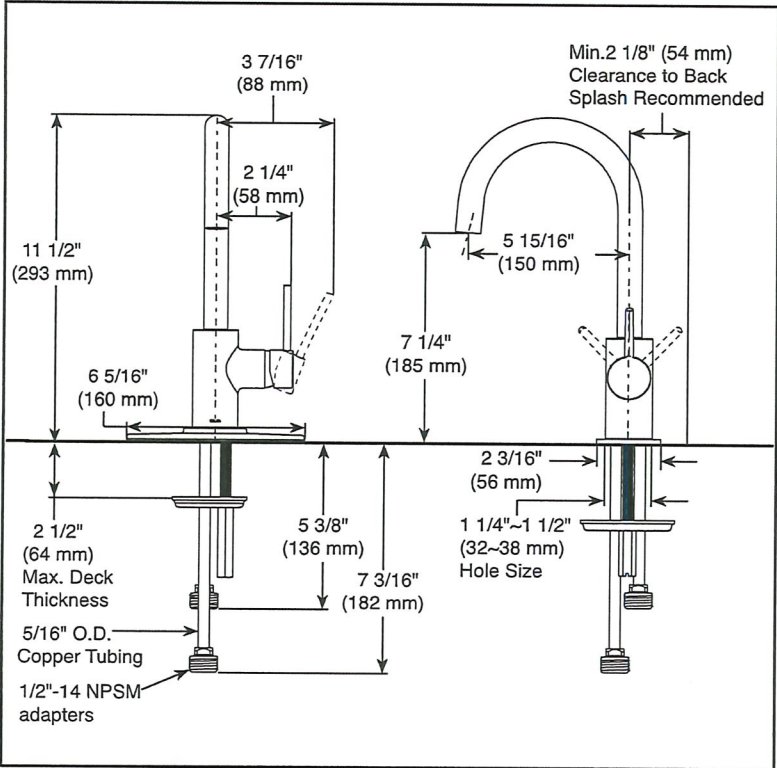
**WARRANTY**

- Parts and Finish - Lifetime limited warranty; or for commercial purchasers, 10 years for multi-family residential (apartments and condominiums) and 5 years for all other commercial uses, in each case from the date of purchase.
- Electronic Parts and Batteries (if applicable) - 5 years from the date of purchase; or for commercial purchasers, 1 year from the date of purchase. No warranty is provided on batteries.

**COMPLIES WITH:**

- ASME A112.18.1 / CSA B125.1
-  Indicates compliance to ICC/ANSI A117.1

Submitted Model No.: DV 43 - BAR SINK  
Specific Features: CHAMPAGNE BR.



▲ Designate proper finish suffix

*Nm Sm*

Delta reserves the right (1) to make changes in specifications and materials, and (2) to change or discontinue models, both without notice or obligation. Dimensions are for reference only. See current full-line price book or [www.deltafaucet.com](http://www.deltafaucet.com) for finish options and product availability.

DSP-K-1959LF Rev. D

**Delta Faucet Company**  
55 E. 111th Street, Indianapolis, IN 46280  
350 South Edgeware Road, St. Thomas, ON N5P 4L1  
© 2019 Delta Faucet Company



DELTA

TempAssure 17T Series Contemporary Square Shower Kit

DV LOT 43- MASTER ENSUITE



[Pin it](#)

[More Photos](#)

[View Larger](#)

[Change Background](#)

Share

[Email](#)

\$1510

Model #:

DF-KIT25-THSCZ-WS

[What does this model number mean?](#)

[Where to Buy](#)

Own this product?

Registering it helps us provide the best service.

[Register Product](#)

Want to save this product so you can quickly find it later?

[Save as a Product I Own](#)

Need help with your product?

[Troubleshoot Your Issue](#)

Product Features and Benefits

- ✓ TempAssure 17T Series valve-only trim with integrated diverter
- ✓ MultiChoice Universal Valve with stops
- ✓ 3-setting H2Okinetic shower head

Product Support, Repair Parts

- ✓ 4-setting H2Okinetic hand show hose
- ✓ Shower arm, flange and wall elt
- ✓ [Lifetime Faucet and Finish Warr](#)

Nm Sm