

# Halo Sliding Tub Door 56 1/2-59 x 59 in. 8 mm

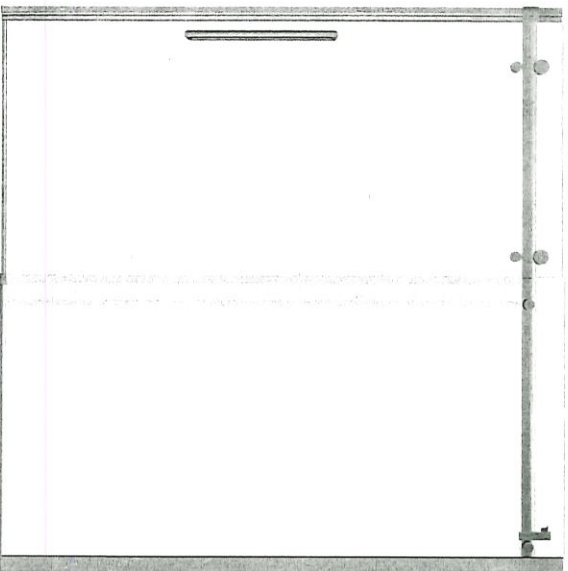
Model number:

1393398

Dimensions: 56 1/2-59" x 59"

Installation: Tub Door

Door type: Slider



## Standard Features:

- Glass panels 5/16 in. (8 mm) with a height of 59 in.
- Lotus easy clean protection for effortless maintenance
- Ball bearing roller technology for smooth and quiet opening
- Reversible door allowing left or right opening for easy access to faucets
- 4 finishes: chrome, brushed nickel, dark bronze and matte black

## Product characteristics:

- Ball Bearing Roller System
- Bestseller
- Utile Compatible

## Warranty:

10 Years

## Certifications

MAAX products adhere to one or more of the following certifications:



## Frame Finish(es):



Chrome (084)



Dark Bronze (173)



Brushed Nickel (305)



Matte Black (340)

MAIN BATH

## Glass Pattern(s):



Clear (900)

## Recommended products (Visit our website for a complete list of our recommended products)

No	Description
101054	Topaz 6032
101055	Topaz 6036
101265	Opik 6032

1/2

# Halo Sliding Tub Door 56 1/2-59 x 59 in. 8 mm

Model number:

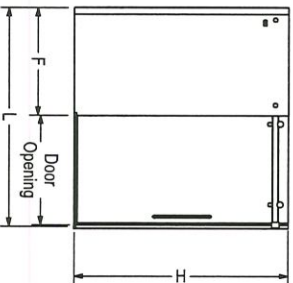
139398

Dimensions: 56 1/2-59" x 59"

Installation: Tub Door

Door type: Slider

STANDARD



Code	Description	H	L Adjustable	F	Door Opening	Wall Adjustment
139398	Halo TURDOOR 59" x 59"	59"	56 1/2" - 59"	28 5/8"	24 1/2"	1"

All dimensions are approximate. Structure measurements must be verified against the unit to ensure proper fit.

Project: **MAIN BATH**

Contractor:

Representative:

Date:

Tel:

Notes:

**212**

## Dimensions:

56 1/2-59 x 59 in.  
(1435-1499 x 1499 mm)

## Glass Thickness:

5/16 in. (8 mm)

## Weight:

118 lbs (53.51 kg)

## Frame type:

Frameless

## Opening:

Reversible

## Door adjustment:

For out of plumb walls

## Minimum access:

22 1/2 (572 mm)

## Maximum access:

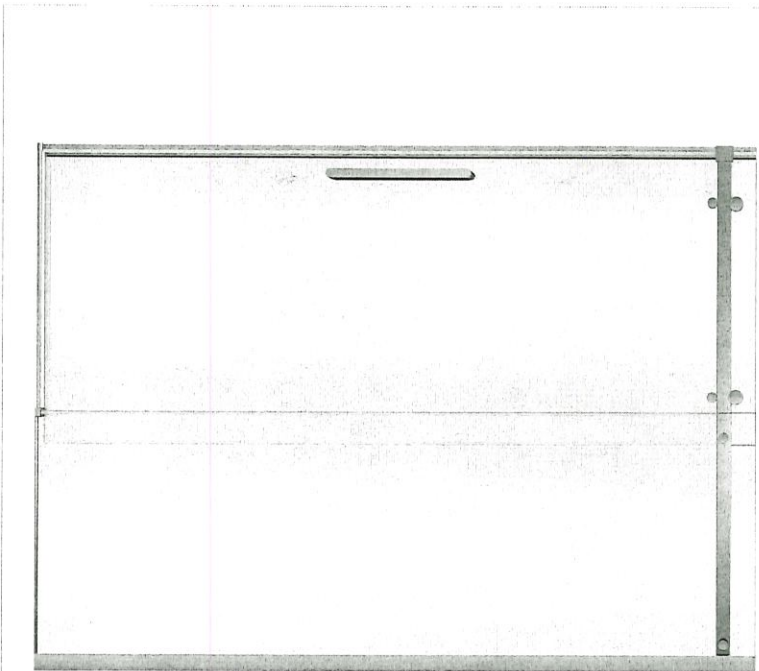
24 1/2 (572 mm)



# Halo Pro Sliding Shower Door 56 1/2-59 x 78 3/4 in. 8 mm

**Model number:** 138952

**Dimensions:** 56 1/2-59" x 78 3/4"      **Installation:** Alcove      **Door type:** Slider



### Standard Features:

- 78 3/4" high luxury clear glass panel
- 5/16 in. (8 mm) tempered glass with Lotus easy clean protection
- Detachable door guide to distance the glass when cleaning
- Reversible shower door for left or right opening
- Also available in a corner configuration with a HALO return panel
- This configuration is optimized for new

### Product characteristics:

- Ball Bearing Roller System
- Contemporary Design
- Detachable guide

### Warranty:

10 Years

### Certifications

MAAX products adhere to one or more of the following certifications:



### Frame Finish(es):

Chrome (084)

Matte Black (340)

### Glass Pattern(s):

Clear (300)

*1/2*

### Recommended products (Visit our website for a complete list of our recommended products)

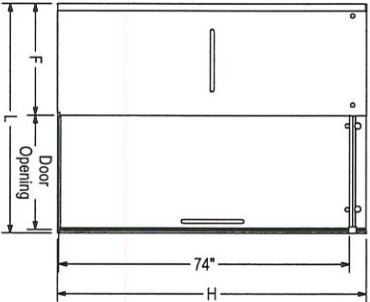
No	Description
410004	B3Round 6030
410005	B3Round 6032
410006	B3Round 6036

# Halo Pro Sliding Shower Door 56 1/2-59 x 78 3/4 in. 8 mm

Model number: 138952

Dimensions: 56 1/2-59" x 78 3/4" Installation: Alcove Door type: Slider

STANDARD



Code	Description	H	L Adjustable	F	Door Opening	Wall Adjustment
138950	Halo Pro 78 3/4" x 47" without Towel bar	78 3/4"	44 1/2" - 47"	22 1/2"	16 1/4" - 18 3/4"	1"
138954	Halo Pro 78 3/4" x 47" with Towel bar	78 3/4"	44 1/2" - 47"	22 1/2"	16 1/4" - 18 3/4"	1"
138952	Halo Pro 78 3/4" x 59" without Towel bar	78 3/4"	56 1/2" - 59"	28 5/8"	22 1/8" - 24 5/8"	1"
138956	Halo Pro 78 3/4" x 59" with Towel bar	78 3/4"	56 1/2" - 59"	28 5/8"	22 1/8" - 24 5/8"	1"

All dimensions are approximate. Structure measurements must be verified against the unit to ensure proper fit.

## Dimensions:

56 1/2-59 x 78 3/4 in.  
(1435-1499 x 2000 mm)

## Glass Thickness:

5/16 in. (8 mm)

## Weight:

156 lbs (73 kg)

## Frame type:

Frameless

## Opening:

Reversible

## Door adjustment:

2 in.

## Minimum access:

23 1/2 (600 mm)

## Maximum access:

24 1/2 (600 mm)

Project: ENSUITE

2/2

Contractor:

Representative:

Date:

Tel:

Notes:



# Jaxi 6030

**Model number:** 106882

**Dimensions:** 60" x 32" x 18"      **Installation:** Alcove      **Material:** AcrylX™ Ap-

**Standard Features:**

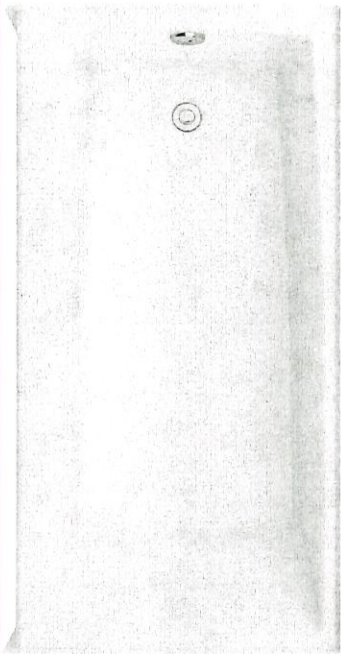
- Modern minimalist and comfortable design
- AcrylX™ high gloss finish
- Integrated flat skirt and tiling flange
- Textured bottom

**Product characteristics:**

- AcrylX™
- Soaking tub
- Modern Design

**Warranty:**

Lifetime limited



MAIN BATH

**Standard colors:**

☐ White (002)

**Certifications**

MAAX products adhere to one or more of the following certifications:



**Recommended products** (Visit our website for a complete list of our recommended doors)

No	Description
138485	Vela Sliding Tub Door with Towel Bar 56 1/2-59 x 59 in. 8 mm
136270	Duel Sliding Tub Door 56-59 x 55 1/2-59 in. 8 mm
138480	Vela Sliding Tub Door 56 1/2-59 x 59 in. 8 mm

# Jaxi 6030

Model number:

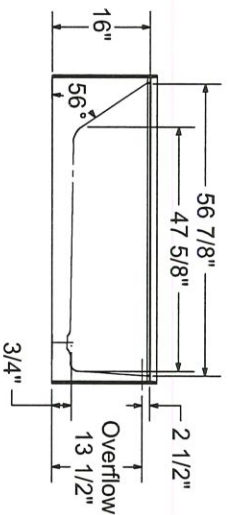
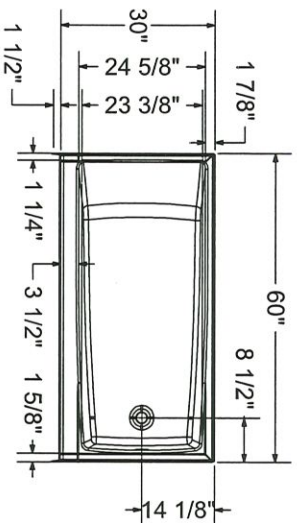
106882

Dimensions: 60" x 32" x 18"

Installation: Alcove

Material: Acrylix™ Ap-

1



All dimensions are approximate. Structure measurements must be verified against the unit to ensure proper fit.

## Dimensions:

60 x 31 1/2 x 17 1/2 in.  
(1524 x 800 x 445 mm)

## Water capacity:

49 gallons - 184 liters

## Weight:

55 lbs - 25 kg

## Bathing well:

47 5/8 X 23 3/8 in.  
(1210 X 594 mm)

## Deep sump height:

10 1/2 in. - 267 mm

## Deck width:

3 1/2 in. - 89 mm

## Drain location:

Left

Right

Project:

Contractor:

Representative:

Date:

Tel:

Notes:





CAMP LIAISON

# American Standard

Style That Works Better

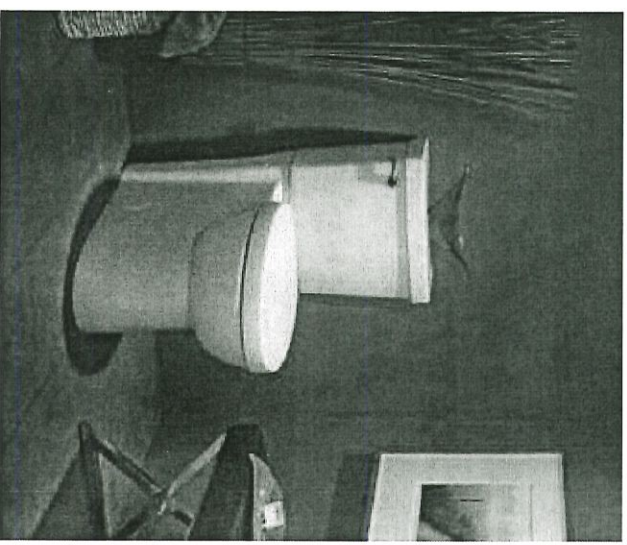
 BARRIER FREE

VITREOUS CHINA

## STUDIO Flowise® CONCEALED TRAPWAY RIGHT HEIGHT™ ROUND FRONT TOILET

☒ 2795 104

- Vitreous china
- Meets definition for HET (High Efficiency Toilet)
- High efficiency (4.8 Lpf/1.07 gpf)
- Meets EPA WaterSense® criteria (Pending)
- 12" (305mm) rough-in
- 16-1/2" (419mm) rim height for accessible applications
- EverClean® surface inhibits the growth of stain and odor-causing bacteria, mold, and mildew on the surface
- Features the **Cadet® 3 Flushing System**
- Round Front siphon action jetted bowl with smooth-sided, concealed trapway
- Generous 9" x 8" (229x203mm) water surface area
- PowerWash™ rim scrubs bowl with pressurized water every flush
- Oversized 3" (76mm) Flush Valve
- Design matched chrome metal trip lever
- Includes top mounting Duroplast Slow-Close seat and cover, with easy lift-off feature for simple removal and attachment for cleaning, packed with bowl. Telescoping cover conceals seat ring when closed
- 2 colour-matched bolt hole covers
- 100% factory flush tested
- Lifetime warranty on chinaware, 5 year warranty on all mechanical parts, and 1 year warranty on seat
- Design coordinated with Studio and Boulevard sinks



### Separate Component Parts:

- ☐ 3053 100 Right Height™ Round Front Bowl with Seat
- ☐ 4000 104 Unlined Tank

### Nominal Dimensions:

768 x 400 x 781mm  
(28-1/4" x 15-3/4" x 30-3/4")

Fixture and toilet seat only, supply by others

### Compliance Certifications -

**Meets or Exceeds the Following Specifications:**

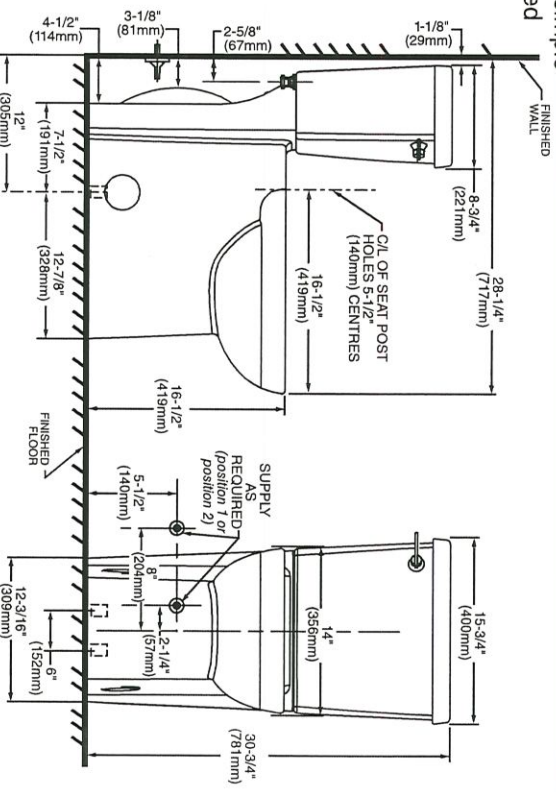
- ASME A112.19.2-2008/CSA B45.1-08 for Vitreous China Fixtures
- US EPA WaterSense® Specification for HET's

### To Be Specified

- ☐ Colour: ☐ White
- ☐ Supply with stop:



• When installed so top of seat is 432 to 483mm (17" to 19") from the finished floor,  
MEETS THE AMERICAN DISABILITIES ACT GUIDELINES AND  
ANSI A117.1 REQUIREMENTS FOR ACCESSIBLE AND USEABLE  
BUILDING FACILITIES-CHECK LOCAL CODES.



**IMPORTANT:** Water supply on the wall is required at 2-1/4" (67mm) or 8" (204mm) from centreline of the toilet (see rough-in). First suggested position is hidden behind the toilet. The second suggested position is next to the toilet. Be sure to check your supply and hose dimensions.

**NOTES:**  
THIS TOILET IS DESIGNED TO ROUGH-IN AT A MINIMUM DIMENSION OF 305MM (12") FROM FINISHED WALL TO C/L OF OUTLET.  
SUPPLY NOT INCLUDED WITH FIXTURE AND MUST BE ORDERED SEPARATELY.

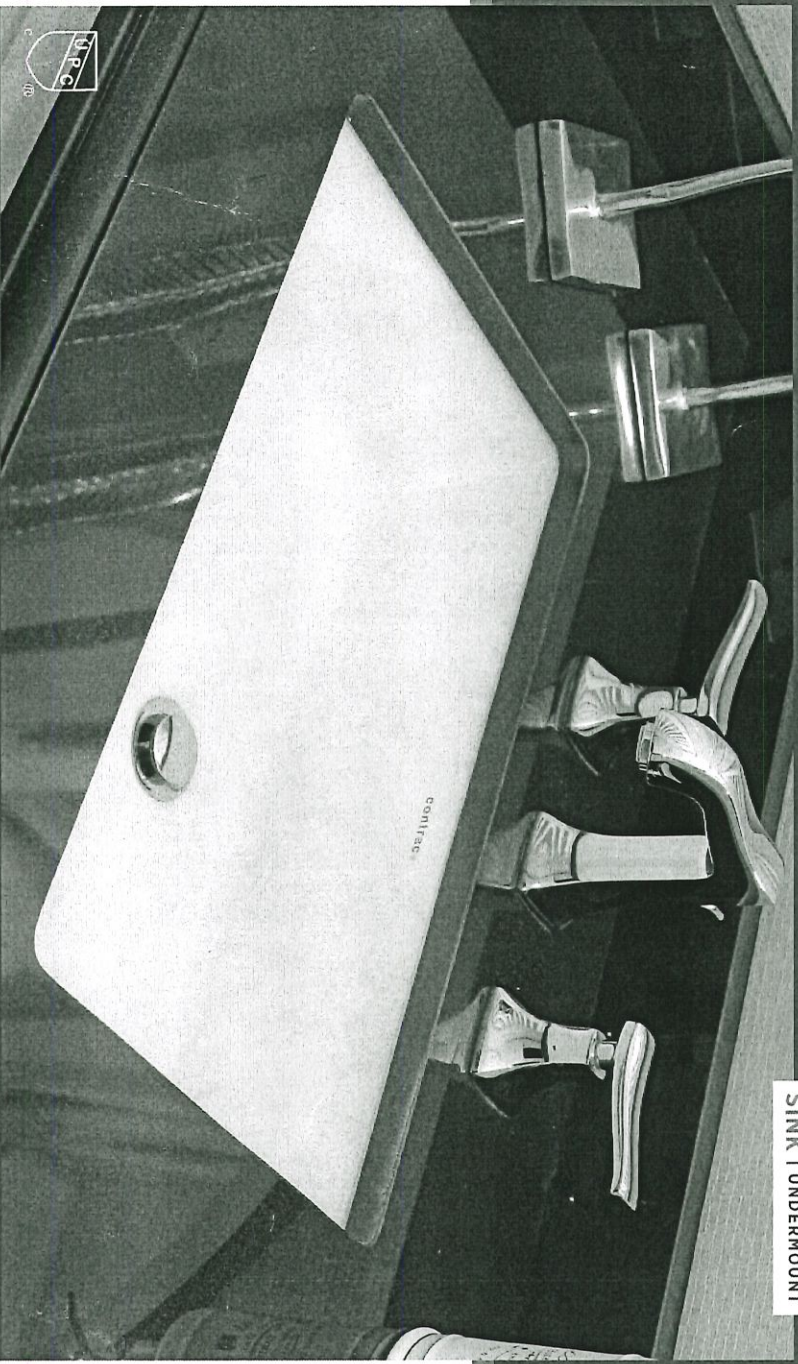
\* DIMENSION SHOWN FOR LOCATION OF SUPPLY IS SUGGESTED.  
**IMPORTANT:** Dimensions of fixtures are nominal and may vary within the range of tolerance established by ANSI Standard A112.19.2  
These measurements are subject to change or cancellation. No responsibility is assumed for use of superseded or voided pages.



**CADET® 3**  
Flushing System



SINK | UNDERMOUNT



# COLLETTE

## ITEM DETAILS

OUTER DIMENSIONS 21 $\frac{5}{8}$ " W x 13 $\frac{3}{4}$ " D x 7 $\frac{1}{2}$ " H

INNER DIMENSIONS 19 $\frac{5}{8}$ " W x 13 $\frac{3}{8}$ " D x 5 $\frac{1}{2}$ " H

MATERIAL Vitreous china

COLOUR Soft white

Rectangular undermount sink | Front overflow hole | Template and mounting hardware supplied | Faucet not included

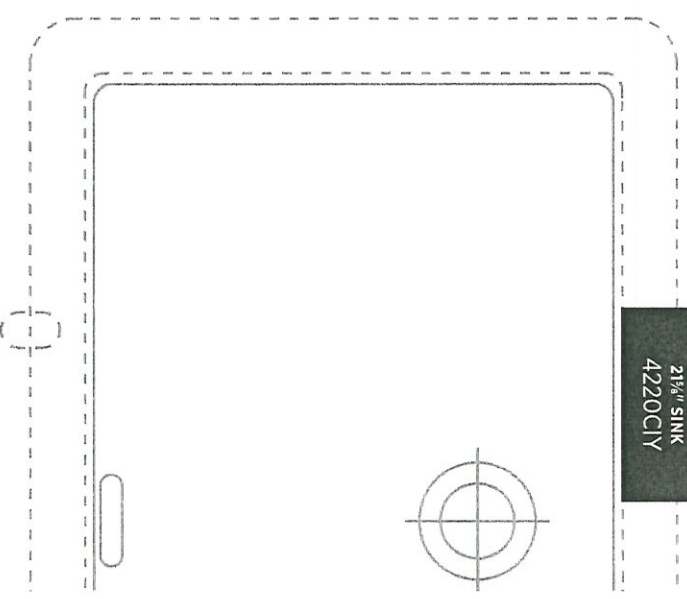
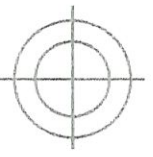
## CERTIFICATIONS

| IAPMO cUPC

| ASME A112.19.2 / CSA B45.1



21 $\frac{5}{8}$ " SINK  
4220C1Y



ISSUED JULY 2019



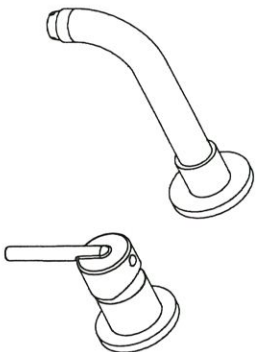


see what Delta can do™

## BATHROOM FAUCETS

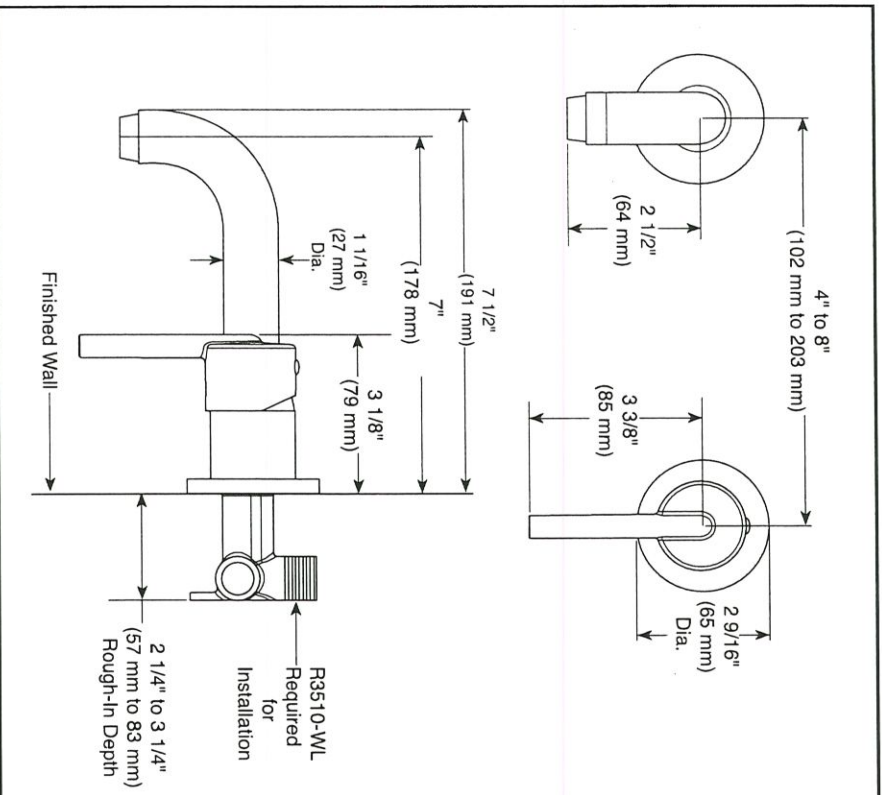
- Trinsic™ Bath Collection
- Two Hole On Wall

T3559LF-WL ▲



Submitted Model No.: POWDER ROOM - BLACK

Specific Features: \_\_\_\_\_



▲ Designate proper finish suffix

### STANDARD SPECIFICATIONS:

- Max 1.2 gpm @ 60 psi, 4.5 L/min @ 414 kPa
- Single handle lavatory faucet for wall mount installation
- Cast brass body
- Control mechanism is the ceramic disc cartridge
- 1/2"-14 NPT threaded female inlets
- Rough-in R3510-WL required for installation

### WARRANTY

- Parts and Finish - Lifetime limited warranty; or for commercial purchasers, 10 years for multi-family residential (apartments and condominiums) and 5 years for all other commercial uses, in each case from the date of purchase.
- Electronic Parts and Batteries (if applicable) - 5 years from the date of purchase; or for commercial purchasers, 1 year from the date of purchase. No warranty is provided on batteries.



### COMPLIES WITH:

- ASME A112.18.1/CSA B125.1
- Indicates compliance to ICC / ANSI A117.1
- EPA WaterSense®
- Verified compliant with 0.25% weighted average Pb content regulations.

Delta reserves the right (1) to make changes in specifications and materials, and (2) to change or discontinue models, both without notice or obligation. Dimensions are for reference only. See current full-line price book or [www.deltafaucet.com](http://www.deltafaucet.com) for finish options and product availability.

DSP-L-T3559LF-WL Rev. E

### Delta Faucet Company

55 E 11th Street, Indianapolis, IN 46280  
350 South Edgewood Road, St. Thomas, ON N5P 4L1  
© 2019 Delta Faucet Company



see what Delta can do™

## TUB AND SHOWER FAUCET TRIM

- **Vero®** Bath Collection
- Valve Only (T14053)
- Shower Only (T14253, T14253-H2O & T14253-WE)
- Tub/Shower (T14453 & T14453-H2O & T14453-WE)

### FEATURES:

- Monitor® 1.4 Series pressure balanced single handle mixing valve trim
- "H2O" models include H2OkinetiC® Technology shower head

### STANDARD SPECIFICATIONS:

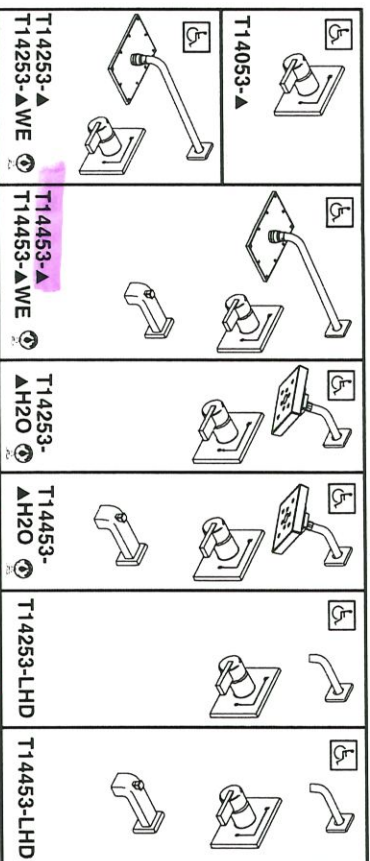
- Maintains a balanced pressure of hot and cold water even when a valve is turned on or off elsewhere in the system
- For use with MultiChoice® Universal rough valve body (R10000 Series)
- Field adjustable to limit handle rotation into hot water zone
- 120° maximum handle rotation
- All parts replaceable from the front of the valve
- 2.5 gpm @ 80 psi for standard models and 1.75 gpm @ 80 psi for models with -H2O & -WE suffix
- Tub port maximum flow rate 6.0 gpm @ 60 psi with R10000-LINBX
- Shower arm overall horizontal length = 16" (406 mm), including threaded ends
- "LHD" models have pad printed red/blue temperature indication less shower head
- Stem extension kit RP77991 can be ordered to allow for an additional 1 3/4" wall thickness. RP77991 ships with chrome escutcheon screws. For special finishes also order RP12630 escutcheon screws in desired finish.

### WARRANTY

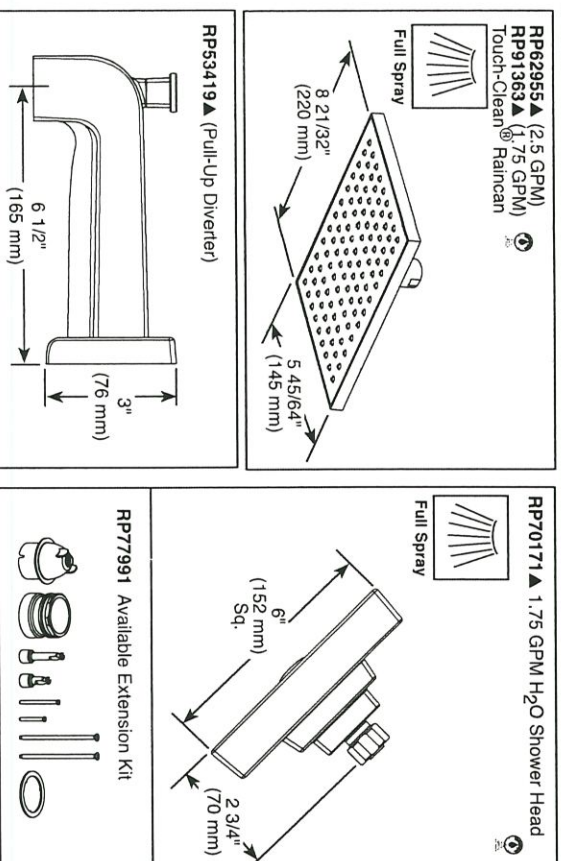
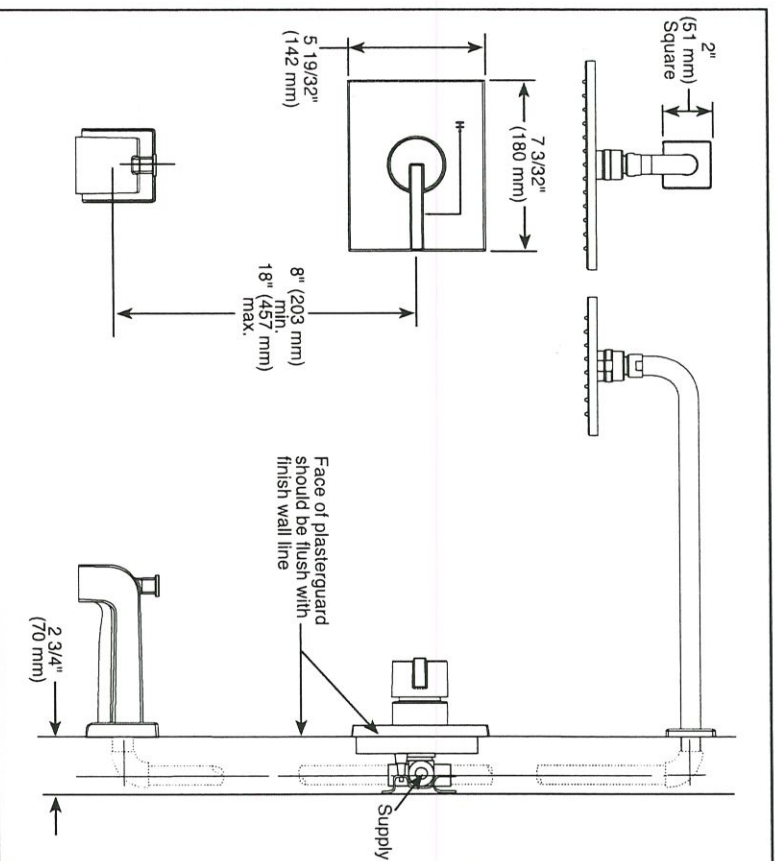
- Parts and Finish - Lifetime limited warranty; or for commercial purchasers, 10 years for multi-family residential (apartments and condominiums) and 5 years for all other commercial uses, in each case from the date of purchase.
- Electronic Parts and Batteries (if applicable) - 5 years from the date of purchase; or for commercial purchasers, 1 year from the date of purchase. No warranty is provided on batteries.

### COMPLIES WITH:

- ASME A112.18.1 / CSA B125.1
- Indicates compliance to ICC/ANSI A17.1 - Valve control only
- EPA WaterSense® (WE and H2O models only)



Submitted Model No.: **MAIN BATA (CARENE)**  
Specific Features: \_\_\_\_\_



### ▲ Designate Proper Finish Suffix

Delta reserves the right (1) to make changes in specifications and materials, and (2) to change or discontinue models, both without notice or obligation. Dimensions are for reference only. See current full-line price book or [www.deltafaucet.com](http://www.deltafaucet.com) for finish options and product availability.

DSP-B-T14053 Rev. K

### Delta Faucet Company

55 E. 111th Street, Indianapolis, IN 46280  
350 South Edgeware Road, St. Thomas, ON N5P 4L1  
© 2018 Delta Faucet Company



KITCHEN

BATH

WHERE TO BUY

Repair Parts Smart Solutions Inspired Living Shopping Tools Support Commercial Company

Bath > SINK/AVAILOR Faucets > Two Handle Widespread Bathroom Faucet

See Entire Collection

## PIVOTAL

### Two Handle Widespread Bathroom Faucet



Plus

Model #

3599LF-BLMPU

What does this model number mean?

Finish Shown



Matte Black

Where to Buy >

#### Own this product?

Registering it helps us provide the best service.

Register Product

Want to save this product so you can quickly find it later?

Save as a Product I Own

Need help with your product?

Troubleshoot Your Issue >

View Repair Parts for this Model >

More Photos

View Larger 360 View Change Background

Share Email

#### Featured Accessories



79908-BL

ADD



79918-BL

ADD

MASTER ENROUTE

KITCHEN

BATH

WHERE TO BUY

Repair Parts Smart Solutions Inspired Living Shopping Tools Support Commercial Company

Bath > Collections > TempAssure 17T Series Contemporary Square Shower Kit

## DELTA

### TempAssure 17T Series Contemporary Square Shower Kit



Photo

Model #

DF-KIT25-THSBL-WS

What does this model number mean?

Where to Buy >

#### Own this product?

Registering it helps us provide the best service.

Register Product

Want to save this product so you can quickly find it later?

Save as a Product I Own

Need help with your product?

Troubleshoot Your Issue >

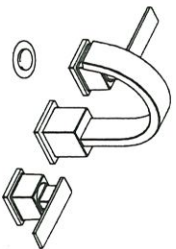
More Photos

View Larger Change Background

Share Email

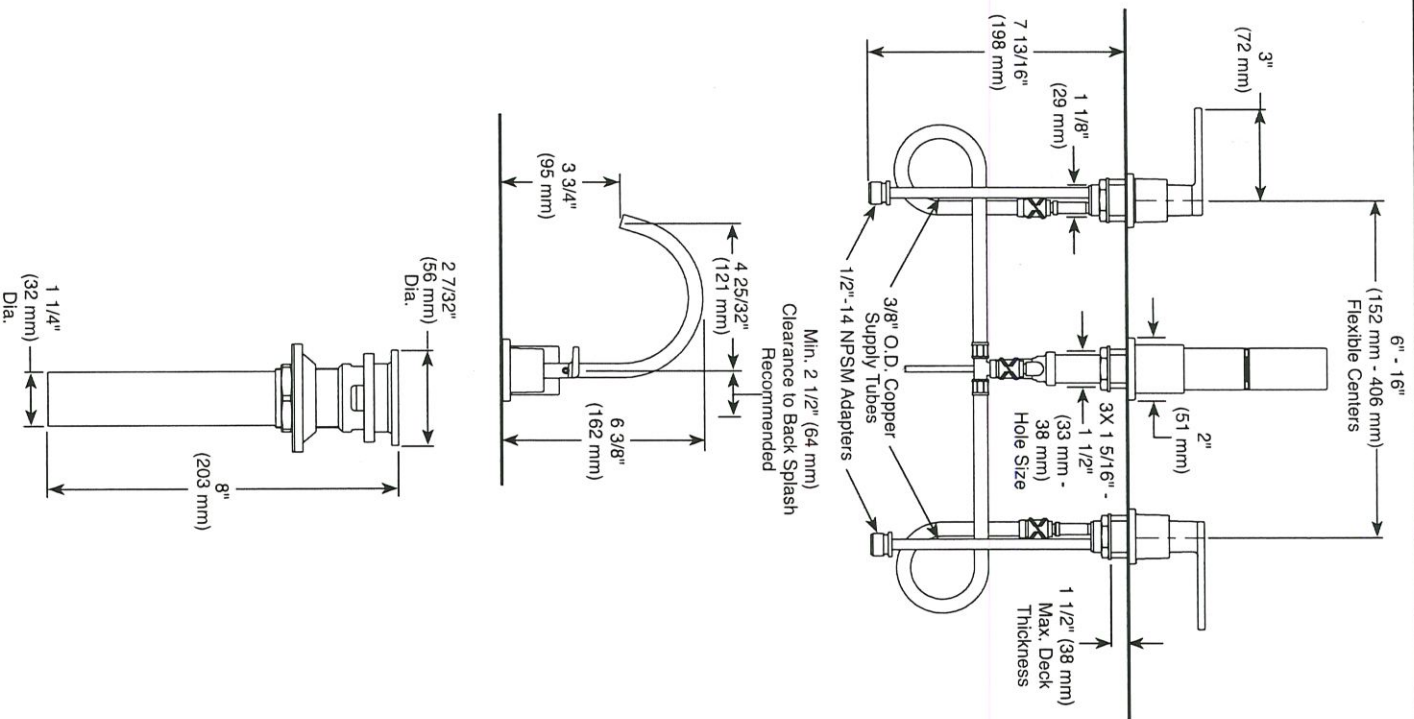
MASTER ENSURE





3553LFA

Submitted Model No.: MAN BATA (CH20WE)  
Specific Features: \_\_\_\_\_



▲ Designate proper finish suffix

Delta reserves the right (1) to make changes in specifications and materials, and (2) to change or discontinue models, both without notice or obligation. Dimensions are for reference only. See current full-line price book or [www.deltafaucet.com](http://www.deltafaucet.com) for finish options and product availability.

DSP-L-3553LF Rev. I



see what Delta can do™

## BATHROOM FAUCET

- Vero® Collection
- Two Handle Widespread Deck Mount

### STANDARD SPECIFICATIONS:

- Max. flow rate 1.2 gpm @ 60 psi, 4.5 L/min @ 414 kPa
- Three hole mount
- Solid brass fabricated end bodies
- 1/4 turn handle stops
- Control mechanism is a rotating cylinder type with stainless steel plate and 90° rotation, with replaceable non-metallic seats
- Models have metal drain with push pop-up type fitting with plated flange and stopper

### WARRANTY:

- Parts and Finish - Lifetime limited warranty; or for commercial purchasers, 10 years for multi-family residential (apartments and condominiums) and 5 years for all other commercial uses, in each case from the date of purchase.
- Electronic Parts and Batteries (if applicable) - 5 years from the date of purchase; or for commercial purchasers, 1 year from the date of purchase. No warranty is provided on batteries.



### COMPLIES WITH:

- ASME A112.18.1 / CSA B125.1
- ASME A112.18.2 / CSA B125.2
- Indicates compliance to ICC/ANSI A117.1 - Valve control only
- EPA WaterSense®
- Verified compliant with 0.25% weighted average Pb content regulations

**Delta Faucet Company**  
55 E. 111th Street, Indianapolis, IN 46280  
350 South Edgeware Road, St. Thomas, ON N5P 4L1  
© 2020 Delta Faucet Company