



STUDIO™
UNDERCOUNTER SINK
VITREOUS CHINA

STUDIO UNDERCOUNTER SINK

- Vitreous china
- Rectangular undercounter mount sink
- Unglazed rim
- Front overflow
- Supplied with mounting kit (047194-0070A) and template (Faucet shown not included)

0614 000 Unglazed Rim
540 x 387mm (21-1/4" x 15-1/4")

Bowl size:
464mm (18-1/4") wide,
308mm (12-1/8") front to back,
171mm (6-3/4") deep

0618 000 Unglazed Rim
600 x 422mm (23-5/8" x 16-5/8")

Bowl size:
537mm (21-1/8") wide,
356mm (14") front to back,
152mm (6") deep

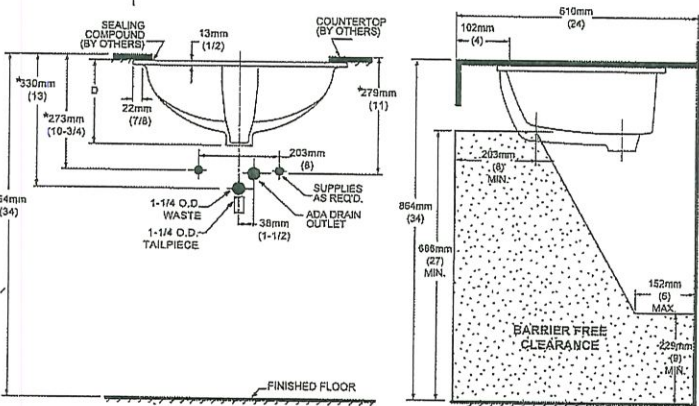
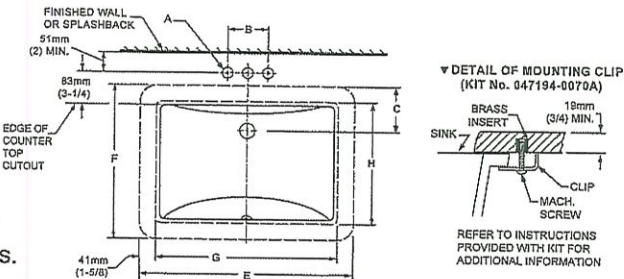
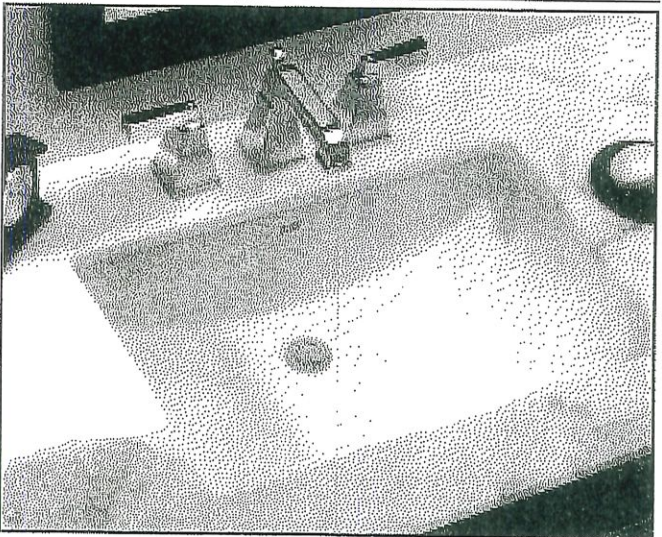
COMPLIANCE CERTIFICATIONS –
Meets or exceeds the following Specifications:
• ASME A112.19.2M for Vitreous China Fixtures.
• CAN/CSA B45 Series.

- To Be Specified
- ☐ Colour:
 - ☐ Faucet*:
 - ☐ Faucet Finish:
 - ☐ Supplies & Stops:
 - ☐ Trap 1-1/4" (32 mm):

* See faucet section for additional models available

Countertop 864mm (34") from finished floor. Sink installed 102mm (4") from front edge of countertop. Countertop thickness to be 25mm (1") maximum. MEETS THE AMERICAN DISABILITIES ACT GUIDELINES AND ANSI A117.1 ACCESSIBLE AND USEABLE BUILDINGS AND FACILITIES - CHECK LOCAL CODES.

NOTES:
WE RECOMMEND USING SINK AS A TEMPLATE TO DETERMINE PROPER CONTOUR. CUT COUNTERTOP 38MM (1-1/2") INSIDE SINK CONTOUR. FAUCETS NOT INCLUDED AND MUST BE ORDERED SEPARATELY.
* DIMENSIONS SHOWN FOR LOCATION OF SUPPLIES AND "P" TRAP ARE SUGGESTED.
▼ UNDERCOUNTER MOUNTING KIT SUPPLIED WITH SINK.
IMPORTANT: Dimensions of fixtures are nominal and may vary within the range of tolerances established by ANSI Standard A112.19.2. These measurements are subject to change or cancellation. No responsibility is assumed for use of superseded or voided pages.



FAUCET	A	B
CENTRESET	1-1/8 (29mm)	4 (102mm)
SPREAD	1-3/8 (35mm)	8 (203mm)

CAT. NO.	E	F	G	H	C	D
0614 000	540mm (21-1/4)	387mm (15-1/4)	464mm (18-1/4)	308mm (12-1/8)	114mm (4-1/2)	209mm (8-1/4)
0618 000	600mm (23-5/8)	422mm (16-5/8)	537mm (21-1/8)	356mm (14)	108mm (4-1/4)	209mm (8-1/4)

4/22/2015

Studio® Concealed Trapway Right Height® Dual Flush Elongated Front toilet with Seat - American Standard - Product Details



Studio® Concealed Trapway Right Height® Dual Flush Elongated Front toilet with Seat - American Standard - Product Details



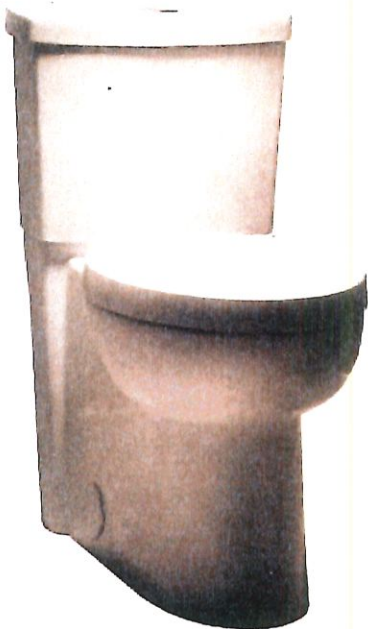
This page was printed from <http://americanstandard.ca>

Studio® Concealed Trapway Right Height® Dual Flush Elongated Front toilet with Seat

Product Information

This page was printed from <http://americanstandard-ca.com>

MODEL #: 2794204, 735168-400, 4000204, 3075120, 5218110, 7381203-200 COLLECTION: STUDIO



Description

- LXP (Luxury Performance) Toilet
- Combination dual flush bowl and tank, with seat
- 12" (305mm) rough-in
- Siphon action jetted bowl with smooth-sided, concealed trapway
- High efficiency, low consumption
 - Full Flush 1.3 gpf/6.0 Lpf
 - Conserving Flush 0.9 gpf/4.1 Lpf, utilizes 21% less water
- Meets EPA WaterSense® Criteria (Pending)
- EverClean® Surface
- PowerWash™ rim scrubs bowl with each flush
- 16-1/2" (419mm) rim height
- Fully-glazed 2-1/8" trapway
- Oversized 3" flush valve
- Generous 9" x 8" water surface area
- Includes Duroplast slow close seat and cover with concealed seat ring and easy lift-off feature for simple removal and reattachment for cleaning
- Chrome-plated top mounted push button actuator
- 2 colour matched bolt hole covers
- 5 year warranty on entire toilet
- Design coordinates with Studio® and Boulevard® lavatories

Nominal Dimensions -
Length x Width x Height:
30-1/4" x 15-3/4" x 30-3/4"
(769 x 400 x 780mm)

Features and Innovations

- 5 Year Warranty
- EverClean™ Surface
- Right Height
- Toilet Performance - Best - MAP Score between 800-1000g
- Toilet Shape - Elongated
- Water Efficient
- WaterSense® Certified

Buy Now



Product: 7381203-200.0070A
Dual Flush Push Button, Top Mount \$25.00 Each

Qty

Videos





ARA®

Single Handle Bathroom Faucet

MODEL#: 567LF-BLMPU

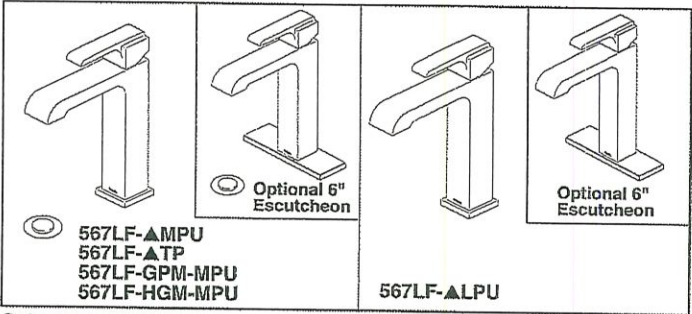
- 1 or 3-hole 4" installation
- Includes deck plate to support 3-hole installation
- Metal drain pop-up assembly in matching finish included



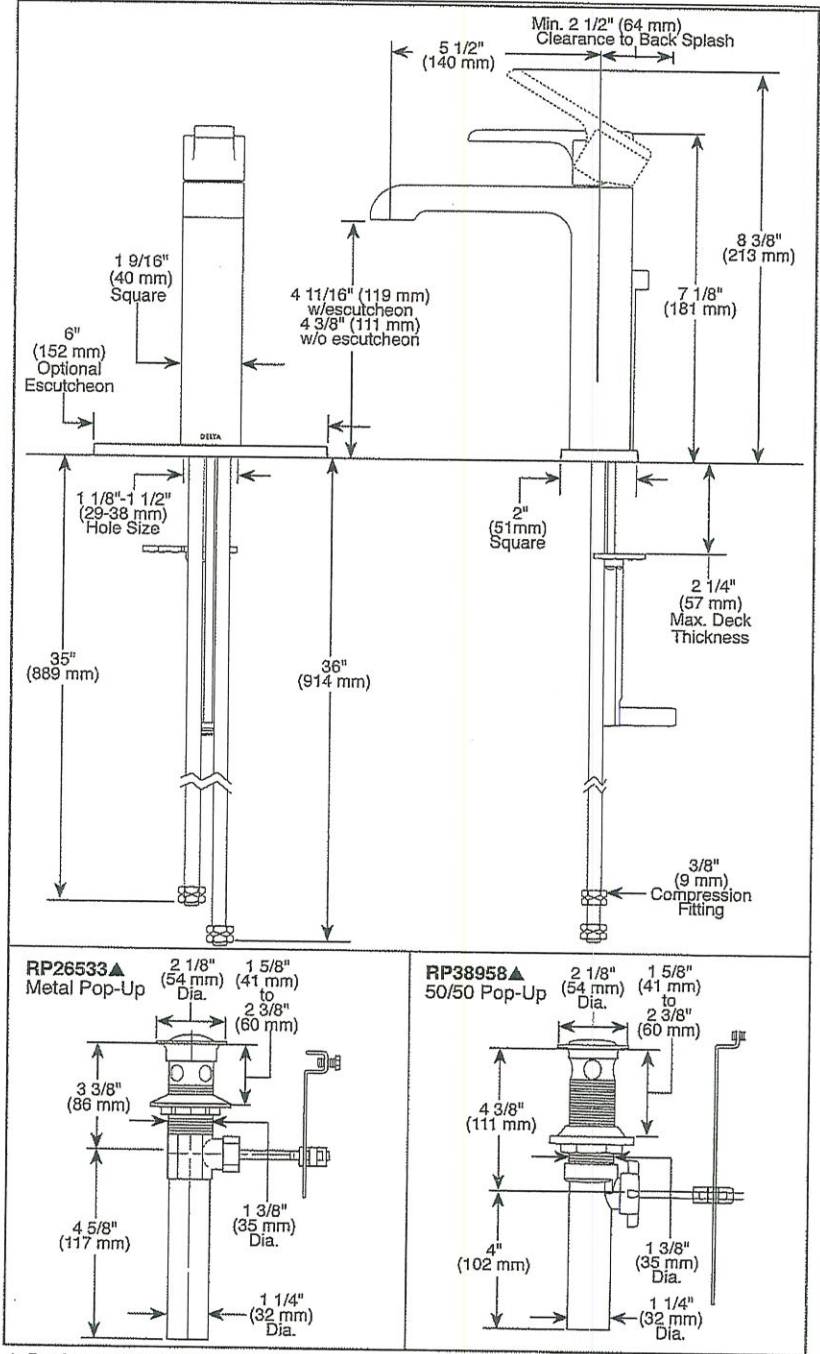
WaterSense® Labeled

Finish: **Matte Black**





Submitted Model No.:
Specific Features:



▲ Designate Proper Finish Suffix
Delta reserves the right (1) to make changes in specifications and materials, and (2) to change or discontinue models, both without notice or obligation. Dimensions are for reference only. See current full-line price book or www.deltafaucet.com for finish options and product availability.

DSP-L-567LF-MPU Rev. H



see what Delta can do™

BATHROOM FAUCET

- Ara® Bath Collection
- Single Handle Deck Mount

STANDARD SPECIFICATIONS:

- Max. flow rate 1.2 gpm @ 60 psi, 4.5 L/min @ 414 kPa
- GPM indicates max. flow rate 1.0 gpm @ 60 psi, 3.8 L/min @ 414 kPa
- HGM Indicates max. flow rate 0.5 gpm @ 60 psi, 1.9 L/min @ 414 kPa
- One or three hole mount (escutcheon optional, included)
- Ceramic cartridge
- 3/8" O.D. straight, staggered PEX supply lines
- Red/blue indicator markings
- Models with suffix "MPU" have metal drain with pop-up type fitting with plated flange and stopper
- Models with suffix "LPU" are less pop-up
- Models with suffix "TP" have 50/50 pop-up type fitting with plated flange and stopper
- Solid brass fabricated spout

WARRANTY

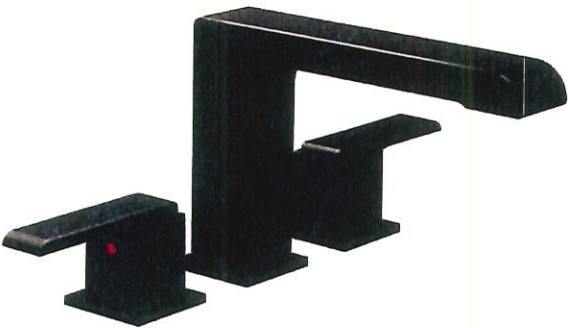
- Parts and Finish - Lifetime limited warranty; or for commercial purchasers, 10 years for multi-family residential (apartments and condominiums) and 5 years for all other commercial uses, in each case from the date of purchase.
- Electronic Parts and Batteries (if applicable) - 5 years from the date of purchase; or for commercial purchasers, 1 year from the date of purchase. No warranty is provided on batteries.



COMPLIES WITH:

- ASME A112.18.1 / CSA B125.1
- ASME A112.18.2 / CSA B125.2
- Indicates compliance to ICC/ANSI A117.1 - Valve control only
- EPA WaterSense® - applies to 567LF-MPU, 567LF-TP, 567LF-GPM-MPU, 567LF-LPU only
- Verified compliant with .25% weighted average Pb content regulations.

Delta Faucet Company
55 E. 111th Street, Indianapolis, IN 46280
350 South Edgeware Road, St. Thomas, ON N5P 4L1
© 2020 Delta Faucet Company



ARA®

Roman Tub Trim

MODEL#: T2767-BL

- Valve is not included, must purchase separately
- 3-hole 8-16" installation
- Backed by Delta Faucet's Lifetime Limited Warranty

Finish: **Matte Black**



Rough Valve



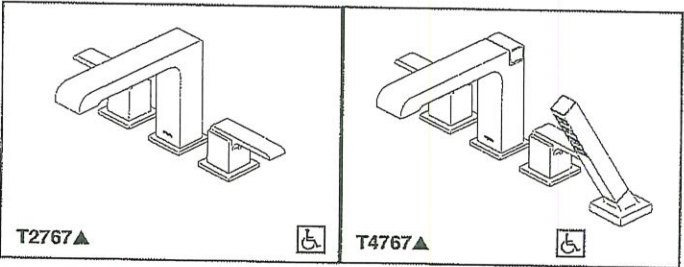
Two Handle Flexible Mount
MODEL#: R2700

▼ SHOW MORE OPTION

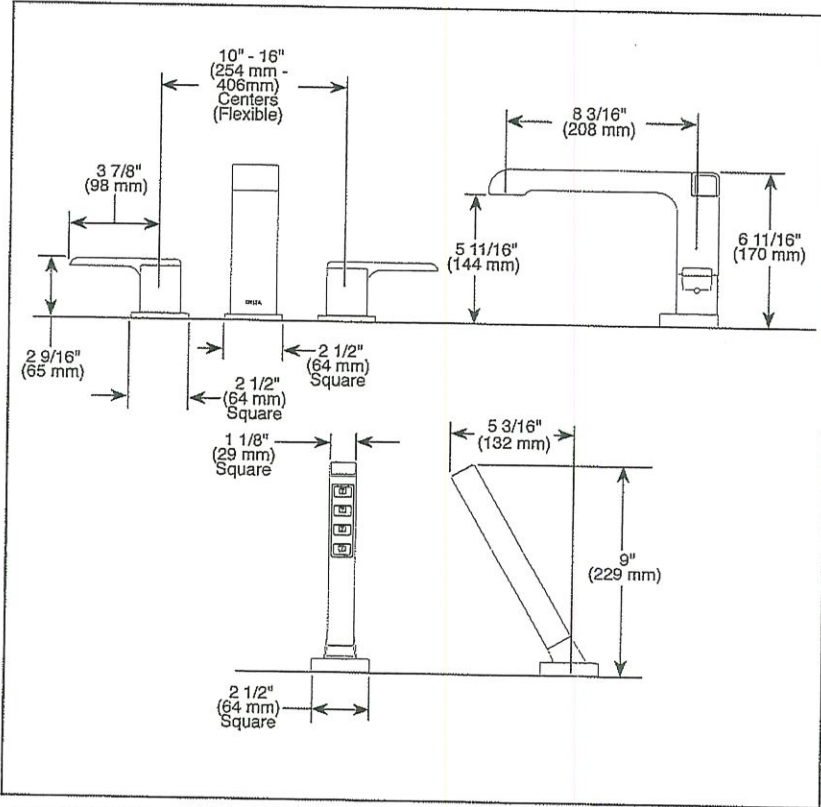
Base Part



Roman Tub Trim
MODEL#: T2767-BL

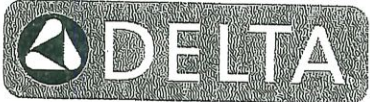


Submitted Model No.: _____
Specific Features: _____



▲ Designate Proper Finish Suffix

◆ Your Delta Faucet hand shower incorporates a backflow protection system that has been tested to be in compliance with ASME A112.18.3, CSA B125.1 and ASME A112.18.1. It incorporates two certified check valves in series, which operate independently and are integral, non-serviceable parts of the wand assembly.



see what Delta can do™

ROMAN TUB/WHIRLPOOL FAUCET TRIM

- Ara™ Bath Collection
- Three Hole Installation (T2767 Series)
- Four Hole Installation (T4767 Series)
- Rough-In Kit Must Also be Ordered to Complete Installation (R4707 for four hole and R2707 for three hole)

STANDARD SPECIFICATIONS:

- Trim Only for two handle Roman Tub faucet for concealed mounting
- Temperature and volume controlled with handles
- Red/blue button covers on handle for hot/cold identification
- Rough-In kit must also be ordered to complete installation (R4707 for four hole and R2707 for three hole). There are separate specification sheets on each rough-in kit if more details are required.
- Handshower includes double check valves for backflow prevention (T4767).
- H₂Okinetic® Handshower water efficient flowrate of 1.75 gpm @ 80 psi, 6.6 L/min @ 550 kPa

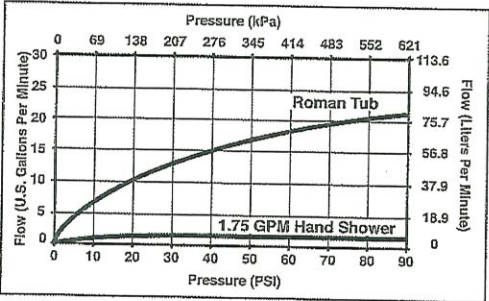
WARRANTY

- Lifetime limited warranty on parts (other than electronic parts and batteries) and finishes; or, for commercial users, for 5 years from date of purchase.
- 5 year limited warranty on electronic parts (other than batteries); or, for commercial users, for 1 year from the date of purchase. No warranty is provided on batteries.



COMPLETE VALVE COMPLIES WITH:

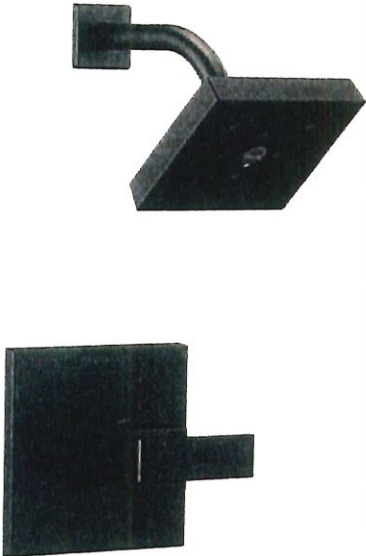
- ASME A112.18.1 / CSA B125.1 ◆
- Indicates compliance to ICC/ANSI A117.1 - Valve control only
- EPA WaterSense® - Applies to handshower only - 59567*



Delta reserves the right (1) to make changes in specifications and materials, and (2) to change or discontinue models, both without notice or obligation. Dimensions are for reference only. See current full-line price book or www.deltafaucet.com for finish options and product availability.

DSP-B-T2767 Rev. D

Delta Faucet Company
55 E. 111th Street, Indianapolis, IN 46280
350 South Edgeware Road, St. Thomas, ON N5P 4L1
© 2017 Delta Faucet Company



ARA®

Monitor 14 Series H₂Okinetic Shower Trim

MODEL#: T14267-BL

- Backed by Delta Faucet's Lifetime Limited Warranty



WaterSense® Labeled

Finish: **Matte Black**



Rough Valve



MultiChoice Universal
Tub / Shower Rough -
Universal Inlets /
Outlets

MODEL#: R10000-UNBX

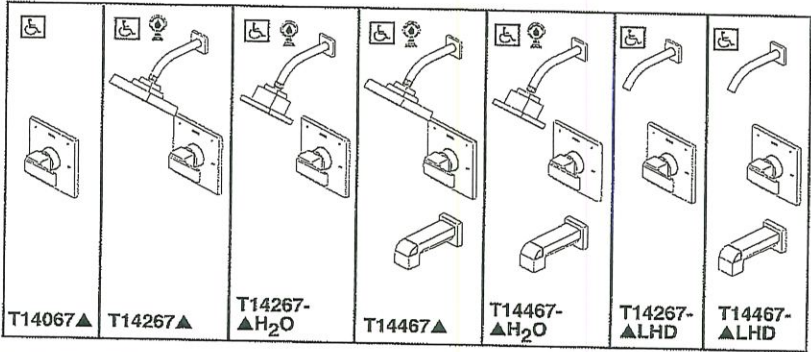
▼ **SHOW MORE OPTION**

Base Part

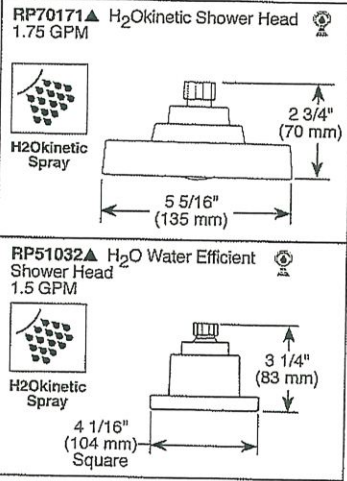
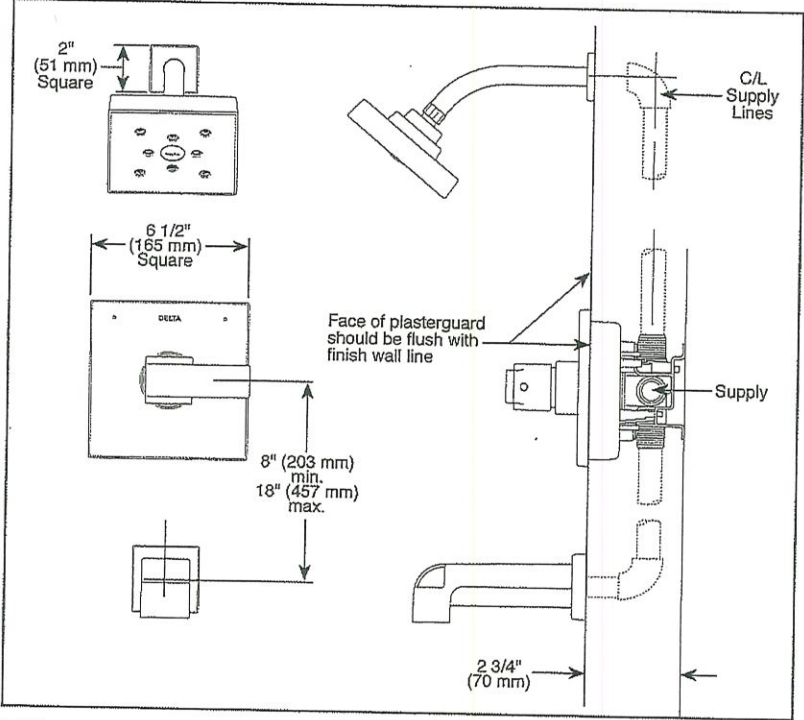


Monitor 14 Series
H₂Okinetic Shower
Trim

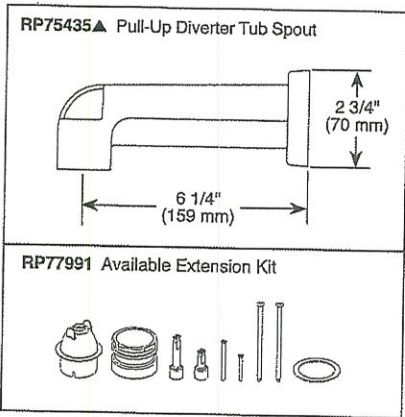
MODEL#: T14267-BL



Submitted Model No.: _____
Specific Features: _____



▲ Designate Proper Finish Suffix



TUB AND SHOWER FAUCET TRIM

- Ara® Bath Collection
- Valve Only (T14067)
- Shower Only (T14267)
- Tub/Shower (T14467)

FEATURES:

- Monitor® 14 Series pressure balanced single handle bath mixing valve trim
- Single function H₂Okinetic® Technology shower head

STANDARD SPECIFICATIONS:

- Maintains a balanced pressure of hot and cold water even when a valve is turned on or off elsewhere in the system
- For use with MultiChoice® Universal rough valve body (R10000 Series)
- Temperature only controlled with handle
- Field adjustable means to limit handle rotation into hot water zone
- 120° maximum handle rotation
- All parts replaceable from the front of the valve
- 1.75 gpm @ 80 psi for standard models
- 1.5 gpm @ 80 psi for models with -H₂O designation
- Tub port maximum flow rate 6.0 gpm @ 60 psi with R10000-UNBX
- Shower arm overall horizontal length = 7" (178 mm), including threaded ends
- Red/blue pad print temperature indicators on escutcheon
- Stem extension kit RP77991 can be ordered to allow for an additional 1 3/4" wall thickness. RP77991 ships with chrome escutcheon screws. For special finishes also order RP12630 escutcheon screws in desired finish.

WARRANTY

- Parts and Finish - Lifetime limited warranty; or for commercial purchasers, 10 years for multi-family residential (apartments and condominiums) and 5 years for all other commercial uses, in each case from the date of purchase.
- Electronic Parts and Batteries (if applicable) - 5 years from the date of purchase; or for commercial purchasers, 1 year from the date of purchase. No warranty is provided on batteries.

COMPLIES WITH:

- ASME A112.18.1 / CSA B125.1
- Indicates compliance to ICC/ANSI A117.1 - Valve control only
- EPA WaterSense®

Delta reserves the right (1) to make changes in specifications and materials, and (2) to change or discontinue models, both without notice or obligation. Dimensions are for reference only. See current full-line price book or www.deltafaucet.com for finish options and product availability.

DSP-B-T14067 Rev. 1

Delta Faucet Company
55 E. 111th Street, Indianapolis, IN 46280
350 South Edgeware Road, St. Thomas, ON N5P 4L1
© 2018 Delta Faucet Company



TRINSIC®

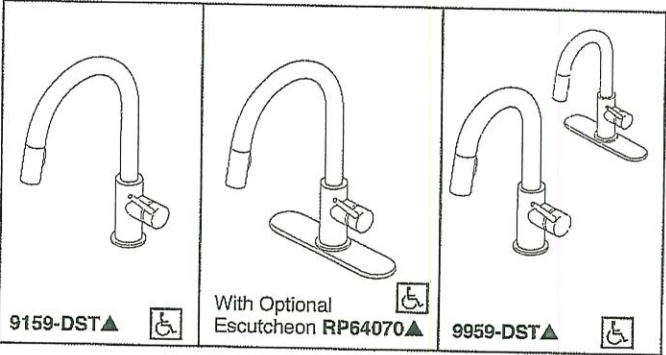
Single Handle Pull-Down Kitchen Faucet

MODEL#: 9159-BL-DST

- Delta MagnaTite Docking holds spray wand firmly in place

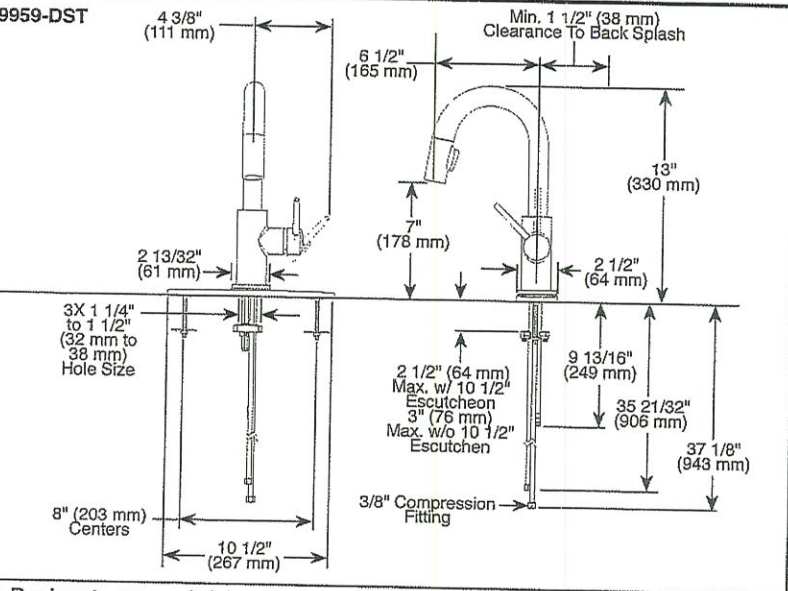
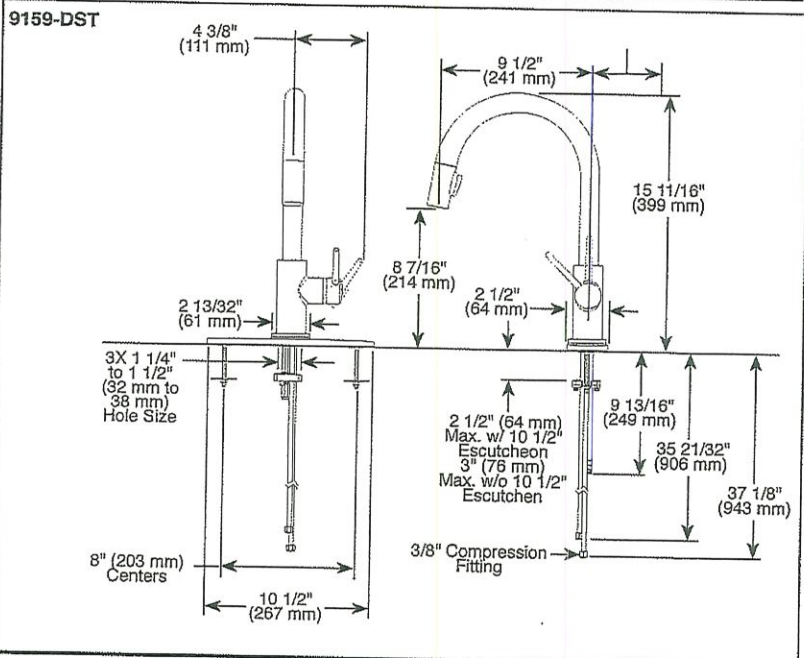
Finish: **Matte Black**





Submitted Model No.: _____

Specific Features: _____



▲ Designate proper finish suffix

Delta reserves the right (1) to make changes in specifications and materials, and (2) to change or discontinue models, both without notice or obligation. Dimensions are for reference only. See current full-line price book or www.deltafaucet.com for finish options and product availability.

DSP-K-9159-DST Rev. F



see what Delta can do™

KITCHEN FAUCETS

- Trinsic® Collection
- Single Handle Deck Mount
- 2-Function Pull-Down Sprayer

FEATURES:

- MagnaTite® Magnetic System
- DIAMOND Seal® Technology
- Touch-Clean® Sprayhead

STANDARD SPECIFICATIONS:

- Maximum 1.8 gpm @ 60 psi, 6.8 L/min @ 414 kPa
- One or three hole mount (escutcheon optional, not included)
- Spout rotates 360°
- Control mechanism shall be full-motion valve cartridge
- Two-function wand; Aerated stream or spray
- Red/blue indicator markings
- Dual integral check valves in sprayer
- Quick connect hoses

WARRANTY

- Parts and Finish - Lifetime limited warranty; or for commercial purchasers, 10 years for multi-family residential (apartments and condominiums) and 5 years for all other commercial uses, in each case from the date of purchase.
- Electronic Parts and Batteries (if applicable) - 5 years from the date of purchase; or for commercial purchasers, 1 year from the date of purchase. No warranty is provided on batteries.

COMPLIES WITH:

- ASME A112.18.1 / CSA B125.1
- ASME A112.18.6
- Indicates compliance to ICC/ANSI A117.1
- Verified compliant with .25% weighted average Pb content regulations.

Delta Faucet Company
55 E. 111th Street, Indianapolis, IN 46280
350 South Edgeware Road, St. Thomas, ON N5P 4L1
© 2019 Delta Faucet Company