

GLASSY WALL RANGE HOOD



AN UPDATED GLASS WALL HOOD WITH ADVANCED FEATURES. The new and improved Glassy by Faber features a stunning flat glass body with advanced electronic controls, an optional remote control and one level energy efficient LED lights. Available with a 600 or 300 cfm motors, the Glassy delivers your choice of performance level in a stylish and contemporary flat glass wall range hood.



AVAILABLE MODELS

Model #	Size / Color	Motor Class (CFM)	Sound Levels (sones)
GLAS30SS600-B	30" Stainless	600 CFM	2.8 - 7.5
GLAS36SS600-B	36" Stainless	600 CFM	2.8 - 7.5
GLAS30SS300-B	30" Stainless	300 CFM	2.5 - 5.0
GLAS36SS300-B	36" Stainless	300 CFM	2.5 - 5.0

KEY FEATURES



Backlit electronic controls
Backlit electronic controls with a White LED light to indicate the current speed and two level lighting.



LED bulbs
Low consumption 1 watt LED bulbs with a dimmer light up your cooking but use very little energy.



Remote Control (optional)
Control all features of the hood from the convenience of a wireless remote control (sold separately).



Ductless Chimney
An upper chimney with return air grates on the side is included. Just purchase the ductless kit to complete the ductless installation.

DS
ABAD

GLASSY WALL RANGE HOOD

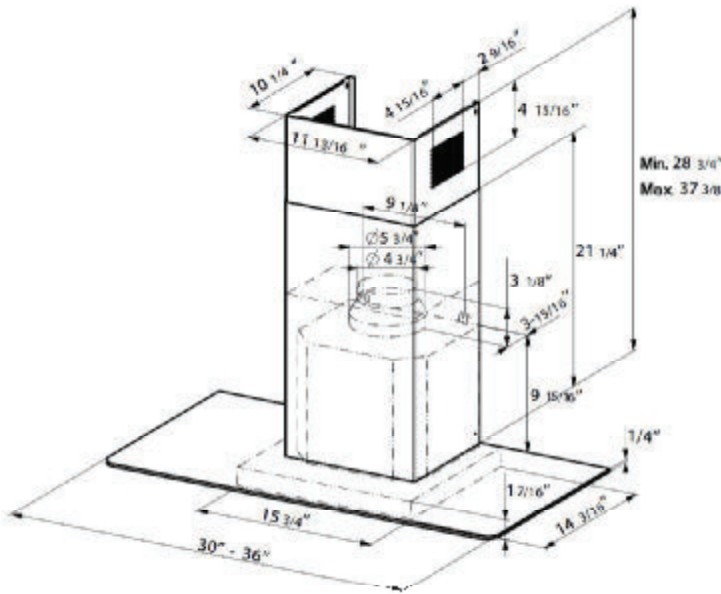


SPECIFICATIONS

min. / max. ceiling height	7' 6" 7/16" - 8' 9 1/16"
convertible to ductless / recirculating	yes - kit sold separately
canopy depth / height	18 1/2" d / 1 11/16" h
high ceiling kit	yes - reaches up to 11' ceilings
controls	4 speed electronic w/ white led
lighting	2 x 1 (w) led - one level
ducting top	6" round
grease filters	dishwasher safe mesh
10 minute intensive speed	yes
15 minute auto shut off	yes
ADA compliant	yes (with remote control purchase)
power cord included	yes
AC power	320 watts / 2.7 amps (600 cfm model)

PERFORMANCE

	SPEED	1	2	3	BOOST
CFM		150	300	450	560
Sones		2.8	4.3	6.0	7.5



ACCESSORIES

FILTER2 - Charcoal Filter Kit

High quality charcoal filter for use when recirculating the air back into the kitchen. Filters out odor and should be replaced every 6 months

HIGH3 - High Ceiling Kit

High ceiling kit replaces both the upper & lower chimney with 2 taller chimneys to reach up to 11'

DUCT4 - Ductless Conversion Kit

To convert the Tratto to ductless, this kit includes charcoal filters and a diverter to send the air thru the side grates on the upper chimney.

REMCTRL2 - Remote Control

Control all features of the hood from the convenience of a wireless remote control

WIREBOX - Fixed Wiring Box

Replace the power cord with a hard wired box to power the range hood

MUDAMPER6 / MUDAMPER8 - Universal Make-Up Air Damper

Satisfies make-up air requirements, this kit uses an air switch to activate the make-up air damper to open and bring fresh air into the home when the hood fan is on. It then closes tightly when the hood is off. The CFM level is not reduced with this accessory.

WARNING! Product specifications are subject to change without notification. Consult the installation instructions before you begin installing this range hood. * Check local make up air codes for guidelines.



Imagine



STUDIO™

UNDERCOUNTER SINK

VITREOUS CHINA

STUDIO UNDERCOUNTER SINK

- Vitreous china
- Rectangular undercounter mount sink
- Unglazed rim
- Front overflow
- Supplied with mounting kit (047194-0070A) and template (Faucet shown not included)

☐ 0614 000 Unglazed Rim

540 x 387mm (21-1/4" x 15-1/4")

Bowl size:
464mm (18-1/4") wide,
308mm (12-1/8") front to back,
171mm (6-3/4") deep

☐ 0618 000 Unglazed Rim

600 x 422mm (23-5/8" x 16-5/8")

Bowl size:
537mm (21-1/8") wide,
356mm (14") front to back,
152mm (6") deep

- COMPLIANCE CERTIFICATIONS –
Meets or exceeds the following Specifications:
- ASME A112.19.2M for Vitreous China Fixtures.
 - CAN/CSA B45 Series.

To Be Specified

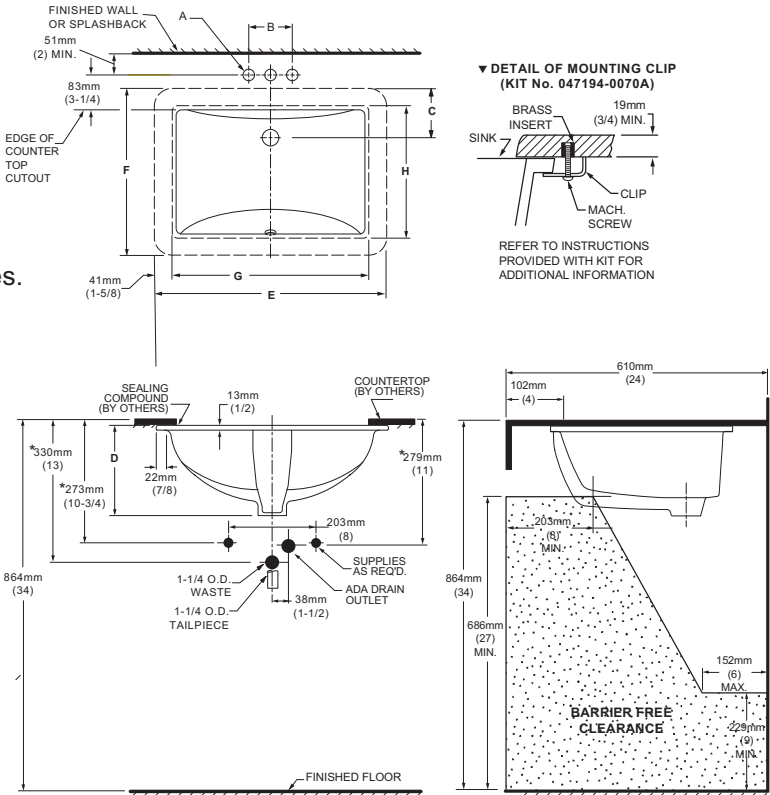
- ☐ Colour:
- ☐ Faucet*:
- ☐ Faucet Finish:
- ☐ Supplies & Stops:
- ☐ Trap 1-1/4" (32 mm):

* See faucet section for additional models available

- 
- Countertop 864mm (34") from finished floor. Sink installed 102mm (4") from front edge of countertop. Countertop thickness to be 25mm (1") maximum.

MEETS THE AMERICAN DISABILITIES ACT GUIDELINES AND ANSI A117.1 ACCESSIBLE AND USEABLE BUILDINGS AND FACILITIES - CHECK LOCAL CODES.

NOTES:
WE RECOMMEND USING SINK AS A TEMPLATE TO DETERMINE PROPER CONTOUR. CUT COUNTERTOP 38MM (1-1/2") INSIDE SINK CONTOUR. FAUCETS NOT INCLUDED AND MUST BE ORDERED SEPARATELY.
★ DIMENSIONS SHOWN FOR LOCATION OF SUPPLIES AND "P" TRAP ARE SUGGESTED.
▼ UNDERCOUNTER MOUNTING KIT SUPPLIED WITH SINK.
IMPORTANT: Dimensions of fixtures are nominal and may vary within the range of tolerances established by ANSI Standard A112.19.2. These measurements are subject to change or cancellation. No responsibility is assumed for use of superseded or voided pages.



FAUCET	A	B
CENTRESET	1-1/8 (29mm)	4 (102mm)
SPREAD	1-3/8 (35mm)	8 (203mm)

CAT. NO.	E	F	G	H	C	D
0614 000	540mm (21-1/4)	387mm (15-1/4)	464mm (18-1/4)	308mm (12-1/8)	114mm (4-1/2)	209mm (8-1/4)
0618 000	600mm (23-5/8)	422mm (16-5/8)	537mm (21-1/8)	356mm (14)	108mm (4-1/4)	209mm (8-1/4)



TRINSIC®

Single Handle High-Arc Bathroom Faucet

MODEL#: 559HA-SS-DST

- Single hole installation
- DIAMOND Seal Technology: a lifetime of reliability
- Backed by Delta Faucet's Lifetime Limited Warranty



WaterSense® Labeled

Finish: **Stainless**





TRINSIC®

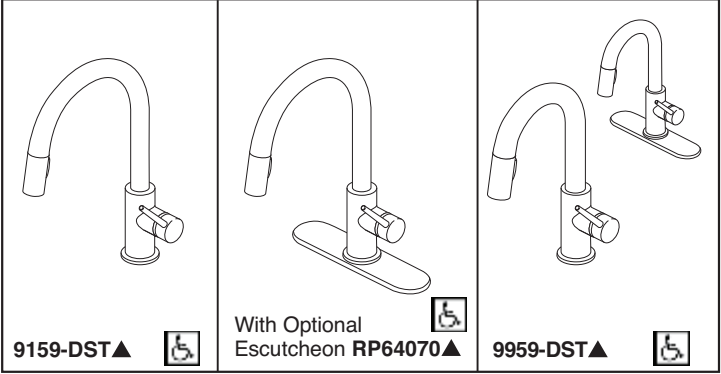
Single Handle Pull-Down Kitchen Faucet

MODEL#: 9159-CZ-DST

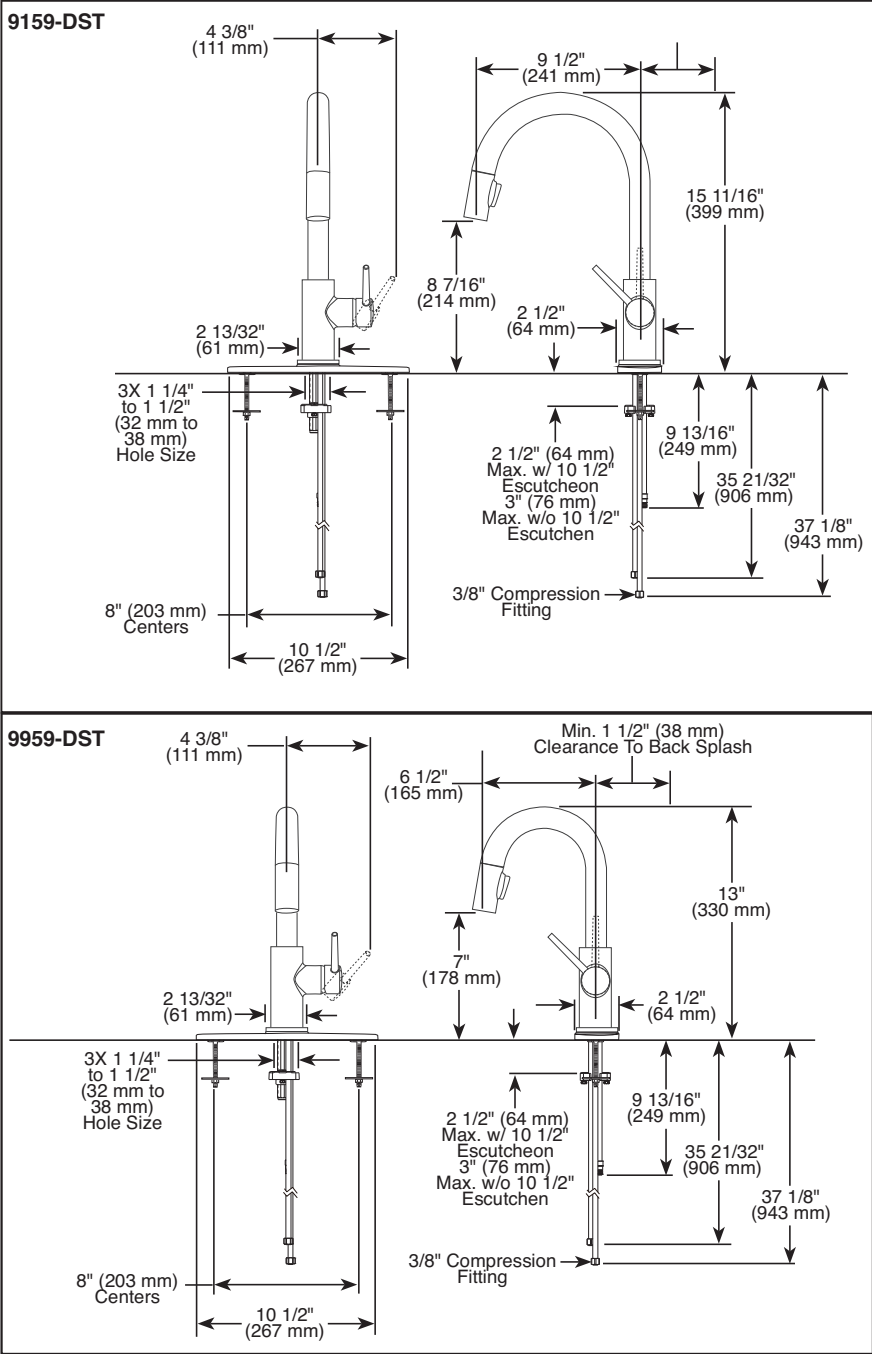
- Delta MagnaTite Docking holds spray wand firmly in place

Finish: **Champagne Bronze**





Submitted Model No.: _____
Specific Features: _____



▲ Designate proper finish suffix

Delta reserves the right (1) to make changes in specifications and materials, and (2) to change or discontinue models, both without notice or obligation. Dimensions are for reference only. See current full-line price book or www.deltafaucet.com for finish options and product availability.

DSP-K-9159-DST Rev. F



KITCHEN FAUCETS

- Trinsic® Collection
- Single Handle Deck Mount
- 2-Function Pull-Down Sprayer

FEATURES:

- MagnaTite® Magnetic System
- DIAMOND Seal® Technology
- Touch-Clean® Sprayhead


STANDARD SPECIFICATIONS:

- Maximum 1.8 gpm @ 60 psi, 6.8 L/min @ 414 kPa
- One or three hole mount (escutcheon optional, not included)
- Spout rotates 360°
- Control mechanism shall be full-motion valve cartridge
- Two-function wand; Aerated stream or spray
- Red/blue indicator markings
- Dual integral check valves in sprayer
- Quick connect hoses

WARRANTY

- Parts and Finish - Lifetime limited warranty; or for commercial purchasers, 10 years for multi-family residential (apartments and condominiums) and 5 years for all other commercial uses, in each case from the date of purchase.
- Electronic Parts and Batteries (if applicable) - 5 years from the date of purchase; or for commercial purchasers, 1 year from the date of purchase. No warranty is provided on batteries.

COMPLIES WITH:

- ASME A112.18.1 / CSA B125.1
- ASME A112.18.6
-  Indicates compliance to ICC/ANSI A117.1
- Verified compliant with .25% weighted average Pb content regulations.

Delta Faucet Company
55 E. 111th Street, Indianapolis, IN 46280
350 South Edgeware Road, St. Thomas, ON N5P 4L1
© 2019 Delta Faucet Company

DS
ABAD



DELTA

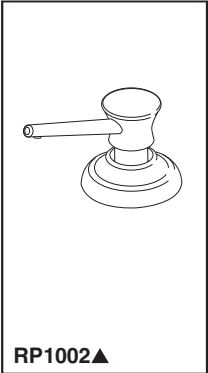
Soap / Lotion Dispenser

MODEL#: RP1002CZ

- Sleek appearance adds allure to your space
- Complements any interior decor
- Backed by Delta Faucet's Lifetime Limited Warranty

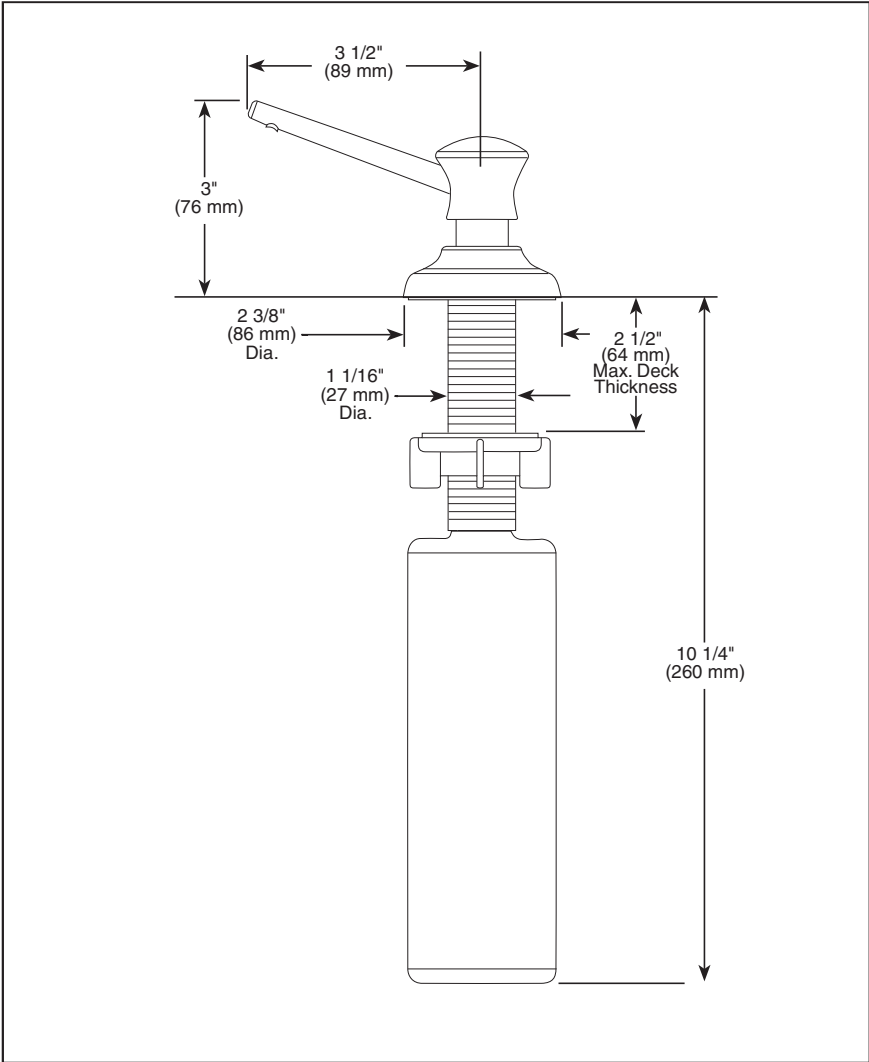
Finish: **Champagne Bronze**





RP1002▲

Submitted Model No.: _____
Specific Features: _____



▲ Designate Proper Finish Suffix



SOAP DISPENSER

STANDARD SPECIFICATIONS:

- 13 ounce bottle.
- Refillable from above the deck.
- 2 1/2" max. deck thickness.
- Includes RP30395 refill funnel.

WARRANTY

- Lifetime Faucet and Finish Limited Warranty to the original consumer purchaser to be free from defects in material and workmanship.
- 5 Year Limited Warranty for usage in all industrial, commercial and business applications.

Delta reserves the right (1) to make changes in specifications and materials, and (2) to change or discontinue models, both without notice or obligation. Dimensions are for reference only. See current full-line price book or www.specselect.com for finish options and product availability.

DSP-K-RP1002 Rev. A



55 E. 111th Street, Indianapolis, Indiana 46280
395 Matheson Blvd. E., Mississauga, ON L4Z 2H2
© 2010 Masco Corporation of Indiana

DS
ABAD