

American Standard



BARRIER FREE

STUDIO™
UNDERCOUNTER SINK
VITREOUS CHINA

STUDIO UNDERCOUNTER SINK

- Vitreous china
- Rectangular undercounter mount sink
- Unglazed rim
- Front overflow
- Supplied with mounting kit (047194-0070A) and template (Faucet shown not included)



- ☐ **0614 000 Unglazed Rim**
540 x 387mm (21-1/4" x 15-1/4")

Bowl size:
464mm (18-1/4") wide,
308mm (12-1/8") front to back,
171mm (6-3/4") deep

- ☐ **0618 000 Unglazed Rim**
600 x 422mm (23-5/8" x 16-5/8")

Bowl size:
537mm (21-1/8") wide,
356mm (14") front to back,
152mm (6") deep

COMPLIANCE CERTIFICATIONS –

Meets or exceeds the following Specifications:

- ASME A112.19.2M for Vitreous China Fixtures.
- CAN/CSA B45 Series.

To Be Specified

- ☐ Colour:
- ☐ Faucet*:
- ☐ Faucet Finish:
- ☐ Supplies & Stops:
- ☐ Trap 1-1/4" (32 mm):

* See faucet section for additional models available



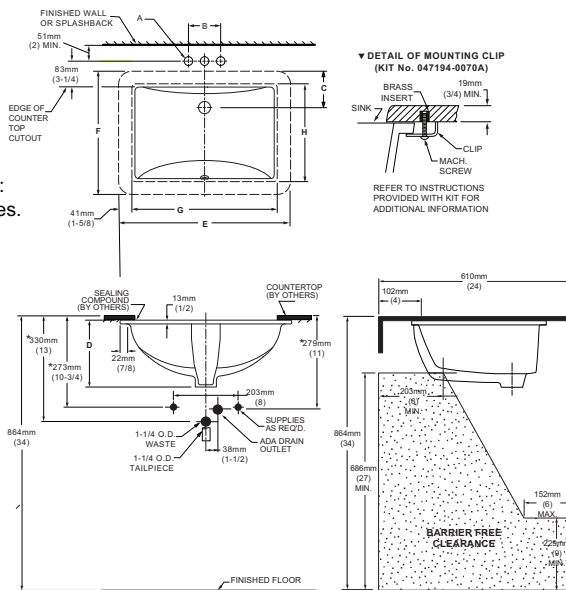
- Countertop 864mm (34") from finished floor. Sink installed 102mm (4") from front edge of countertop. Countertop thickness to be 25mm (1") maximum.
- MEETS THE AMERICAN DISABILITIES ACT GUIDELINES AND ANSI A117.1 ACCESSIBLE AND USEABLE BUILDINGS AND FACILITIES - CHECK LOCAL CODES.**

NOTES:

NOTES:
WE RECOMMEND USING SINK AS A TEMPLATE TO DETERMINE PROPER CONTOUR. CUT COUNTERTOP 38MM (1-1/2") INSIDE SINK CONTOUR. FAULTS NOT INCLUDED AND MUST BE ORDERED SEPARATELY.

★ DIMENSIONS SHOWN FOR LOCATION OF SUPPLIES AND "P" TRAP ARE SUGGESTED.

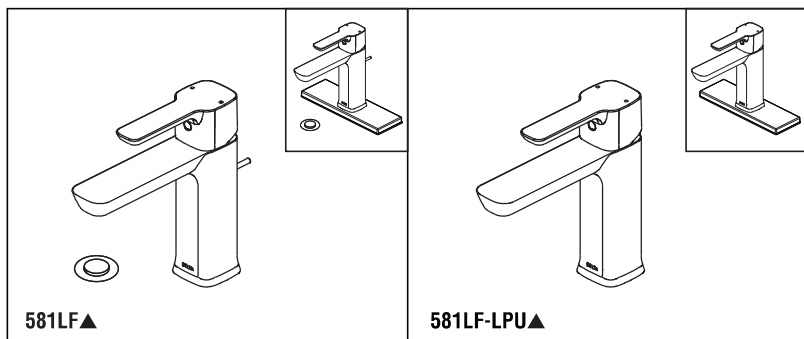
▼ UNDERCOUNTER MOUNTING KIT SUPPLIED WITH SINK.
IMPORTANT: Dimensions of fixtures are nominal and may vary within the range of tolerances established by ANSI Standard A112.19.2.



FAUCET	A	B
CENTRESET	1-1/8 (29mm)	4 (102mm)
SPREAD	1-3/8 (35mm)	8 (203mm)

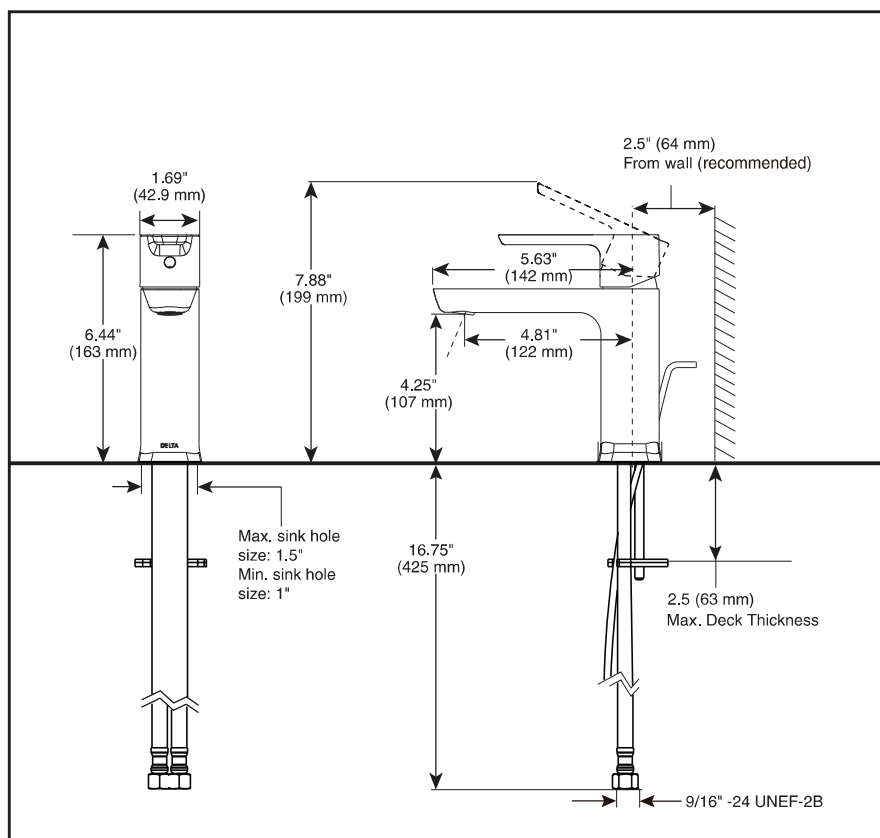
CAT. NO.	E	F	G	H	C	D
0614 000	540mm (21-1/4)	387mm (15-1/4)	464mm (18-1/4)	308mm (12-1/8)	114mm (4-1/2)	209mm (8-1/4)
0618 000	600mm (23-5/8)	422mm (16-5/8)	537mm (21-1/8)	356mm (14)	108mm (4-1/4)	209mm (8-1/4)



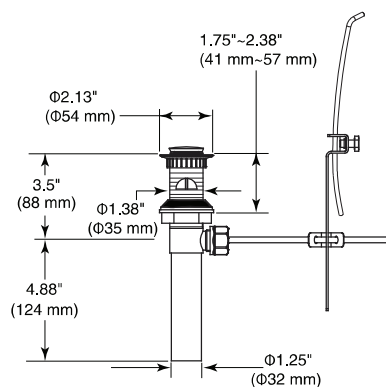


Submitted Model No.: _____

Specific Features: _____



Pop-up



▲ Designate proper finish suffix

Delta reserves the right (1) to make changes in specifications and materials, and (2) to change or discontinue models, both without notice or obligation. Dimensions are for reference only. See current full-line price book or www.specselect.com for finish options and product availability.



LAVATORY FAUCETS

- Kami™ Collection
- Single Handle Deck Mount
- 1 or 3 Hole Sink Applications

STANDARD SPECIFICATIONS:

- Single Handle Lavatory Faucet.
- Ceramic cartridge with high temperature rotational limit stop.
- Models have 50/50 drain with pop-up type fitting with plated flange and stopper.
- 1 or 3 hole sink applications.
- Order 062021A optional escutcheon plate for 3-hole sink installation – Not Included.
- Models with suffix "LPU" are less pop-up.
- 4.81" (122 mm) long reach on spout.
- Maximum 2.5" (63 mm) deck thickness.
- Handle: 4.5" (114 mm) lever handle – ADA compliant-colour indexed.
- Maximum flow rate: 1.2 gpm @ 60 psi, 4.54 L/min @ 413 kPa.

WARRANTY

- Lifetime Faucet and Finish Limited Warranty to the original consumer purchaser to be free from defects in material and workmanship.
- 5 Year Limited Warranty for usage in all industrial, commercial and business applications.



COMPLIES WITH:

- ASME A112.18.1 / CSA B125.1
- ASME A112.18.2 / CSA B125.2
- Indicates ADA compliance to ICC/ANSI A117.1
- Verified compliant with 0.25% weighted average Pb content regulations.



55 E. 111th Street, Indianapolis, Indiana 46280
350 South Edgeware Road, St. Thomas, ON N5P 4L1
© 2017 Masco Corporation of Indiana