

Exhibit 6032 IFS

Model number:	105520
---------------	--------

Dimensions: 60" x 32" x 18"      Installation: Alcove      Material: Acrylic



Standard Features:
<ul style="list-style-type: none"><li>• Rectangular shape bathtub in alcove installation</li><li>• Available in Above-the-Floor Rough (AFR) or not</li><li>• Minimalist look with discreet armrests and textured floor</li><li>• Integrated tiling flange</li><li>• Integrated skirt with access panel when equipped with a system</li></ul>
Product characteristics:
<ul style="list-style-type: none"><li>• Made in North America</li><li>• Elegant design</li><li>• Integrated Tiling Flange and Skirt</li></ul>
Systems:
Whirlpool
Combined Whirlpool/Aeroeffect
Aeroeffect
Warranty:
25 Years

Standard colors:

White (001)

Bone (004)

Biscuit (007)

Certifications

MAAX products adhere to one or more of the following certifications:

Recommended products (Visit our website for a complete list of our recommended doors)

No	Description
139398	Halo Sliding Tub Door 56 ½-59 x 59 in. 8 mm
135330	Incognito 57 Shaker Sliding Tub Door 56-59 x 56 ¾ in. 8 mm
139351	Incognito 57 Sliding Tub Door 56-59 x 56 ¾ in. 6 mm

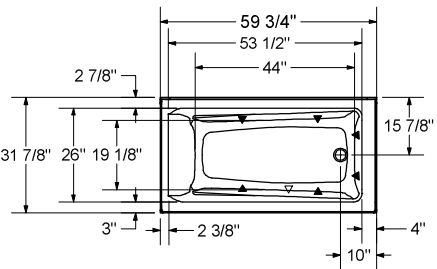
Options (Visit our website for a complete list of our options)

No	Description
<input type="checkbox"/> OPT 10019	Removable access panel
<input type="checkbox"/> OPT 10053	Chromatherapy
<input type="checkbox"/> OPT 10095	Water heater assembly
<input type="checkbox"/> OPT 10106	Metal trim kit for whirlpool and combined systems
<input type="checkbox"/> OPT 20029	Metal trim kit for Air Push Control

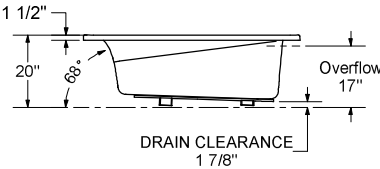
Exhibit 6032 IFS

Model number: 105520

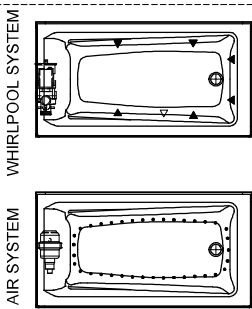
Dimensions: 60" x 32" x 18"      Installation: Alcove      Material: Acrylic



1" Single Integrated tiling  
flange (shown)  
2" Double Integrated tiling  
flange (not shown)  
Drop-in model (Shown)



Wood support design may vary.  
Single Integrated tiling flange: 1" height x 1/4" thickness (shown)  
Double Integrated tiling flange: 2" height (not shown)  
All dimensions are approximate.  
Structure measurement must be verified against the unit to ensure proper fit.



( ▲ ) : Indicates whirlpool jets  
( △ ) Indicates suction positioning  
( ● ) Indicates airjets positioning

Dimensions:

59 3/4 x 32 x 17 3/4 in.  
(1518 x 813 x 451 mm)

Water capacity:

46 gallons - 173 liters

Weight:

78 lbs - 35.37 kg

Bathing well:

53 1/4 X 25 7/8 in.  
(1353 X 657 mm)

Deep sump height:

16 1/4 in. - 413 mm

Deck width:

4 1/8 in. - 105 mm

Drain location:

Left

Right

Project:

Contractor:

Representative:

Date:

Tel:

Notes: