

4/22/2015

Studio® Concealed Trapway Right Height® Dual Flush Elongated Front toilet with Seat - American Standard - Product Details



Studio® Concealed Trapway Right Height® Dual Flush Elongated Front toilet with Seat - American Standard - Product Details



This page was printed from <http://americanstandard.ca>

Product Information

Studio® Concealed Trapway Right Height® Dual Flush Elongated Front toilet with Seat

This page was printed from <http://americanstandard-ca.com>

MODEL #: 2794204, 735168-400, 4000204, 3075120, 5218110, 7381203-200 | COLLECTION: STUDIO



Description

- LXP (Luxury Performance) Toilet
- Combination dual flush bowl and tank, with seat
- 12" (305mm) rough-in
- Siphon action jetted bowl with smooth-sided, concealed trapway
- High efficiency, low consumption
 - Full Flush 1.3 gpf/6.0 Lpf
 - Conserving Flush 0.9 gpf/4.1 Lpf, utilizes 21% less water
- Meets EPA WaterSense® Criteria (Pending)
- EverClean® Surface
- PowerWash™ rim scrubs bowl with each flush
- 16-1/2" (419mm) rim height
- Fully-glazed 2-1/8" trapway
- Oversized 3" flush valve
- Generous 9" x 8" water surface area
- Includes Duroplast slow close seat and cover with concealed seat ring and easy lift-off feature for simple removal and reattachment for cleaning
- Chrome-plated top mounted push button actuator
- 2 colour matched bolt hole covers
- 5 year warranty on entire toilet
- Design coordinates with Studio® and Boulevard® lavatories

Nominal Dimensions -
Length x Width x Height:
30-1/4" x 15-3/4" x 30-3/4"
(769 x 400 x 780mm)

Features and Innovations

- 5 Year Warranty
- EverClean™ Surface
- Right Height
- Toilet Performance - Best - MAP Score between 800-1000g
- Toilet Shape - Elongated
- Water Efficient
- WaterSense® Certified

Buy Now



Product: 7381203-200.0070A
Dual Flush Push Button,Top Mount \$25.00 Each

Qty

Videos



4/22/2015

Studio® Concealed Trapway Right Height® Dual Flush Elongated Front toilet with Seat - American Standard - Product Details

	Product: 5218110.020 Telescoping Elongated Luxury Toilet Seat In White (020)	\$93.00 Each	<div>Qty</div>
	Product: 5121110.020 Telescoping Round Front Luxury Toilet Seat In White (020)	\$85.00 Each	<div>Qty</div>
	Product: 5121110.222 Telescoping Round Front Luxury Toilet Seat In Linen (222)	\$85.00 Each	<div>Qty</div>

ADD TO CART

MSRP: \$679


Don't want to buy this item online? Find a dealer near you.

WHERE TO BUY

Model Numbers

- Main Fixtures
- **2794204** - Studio® Concealed Trapway Right Height® Dual Flush Elongated Front toilet with Seat
Estimated List Price: \$679
- Add. Fixture/Component Parts
- **735168-400** - Tank Cover
Estimated List Price: \$66
- Required Components
- **4000204** - Studio® Concealed Trapway Dual Flush Tank
Estimated List Price: \$239
 - 1.1 / 1.6 gpf Dual Flush 12" Rough-In Tank complete with coupling components and tank trim
 - **3075120** - Studio® Concealed Trapway Elongated Bowl
Estimated List Price: \$440
 - Right Height® Elongated bowl with two (2) bolt hole covers, (Includes 5218110 elongated Duroplast toilet seat & cover)
- Optional Components
- **5218110** - Boulevard® Luxury Toilet Seat
Estimated List Price: \$99
 - **7381203-200** - Dual Flush Push Button, Top Mount
Estimated List Price: \$26
- For 2891 and 4000204

More Toilets



BUY IT NOW

Compact Cadet® 3 Right Height™ EL Toilet with Seat
\$657 – \$788



BUY IT NOW

Triumph Cadet 3 Right Height Elongated Toilet
\$0 – \$0



BUY IT NOW

Triumph Cadet 3 Elongated Toilet
\$0 – \$0



BUY IT NOW

Triumph Cadet 3 Round Front Toilet
\$0 – \$0



MERCURIO

Version
FPMER30W3SS / Mercurio Wall
30" (76 cm) 280 CFM

Collection
Potenza



Photograph is for information purposes only
May not correspond to the selected version

FEATURES

Scotch brite stainless steel (AISI 304)
Electronic control
LED lighting
Metallic grease filter, removable and washable
Optional charcoal filter

OPTIONAL ACCESSORIES

KACL.815
Protective cleaning cloths for stainless steel (box 10 pcs)
103050107
Square charcoal filter - Type 3

TECHNICALFEATURES

Installation type
Wall

Dimensions
30 " / 76 cm

Finish
Scotch brite stainless steel (AISI 304)

Motor
280 CFM

Type of control
Electronic control

Speed settings
3

Lighting
Led 2x1,2 W - 3200 K

Charcoal filter
Square charcoal filter - Type 3

Minimum distance
Gas hob: 63 cm
Electric hob: 52 cm

PACKAGING:WEIGHTS AND VOLUMES

Gross weight
19 kg

Net weight
14 kg

Volume
0,27 m³

Packaging size
Length
995 mm
Height
595 mm
Depth
450 mm

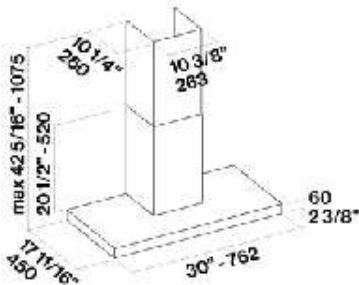
CONSUMPTION AND CONNECTION FEATURES

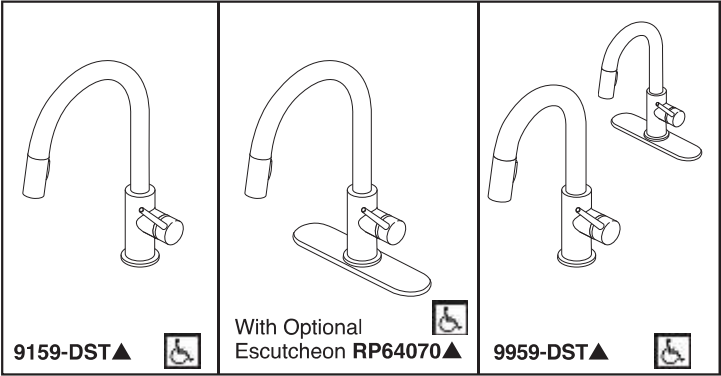
Maximum consumption
150 W

Current
120V 60Hz

Frequency

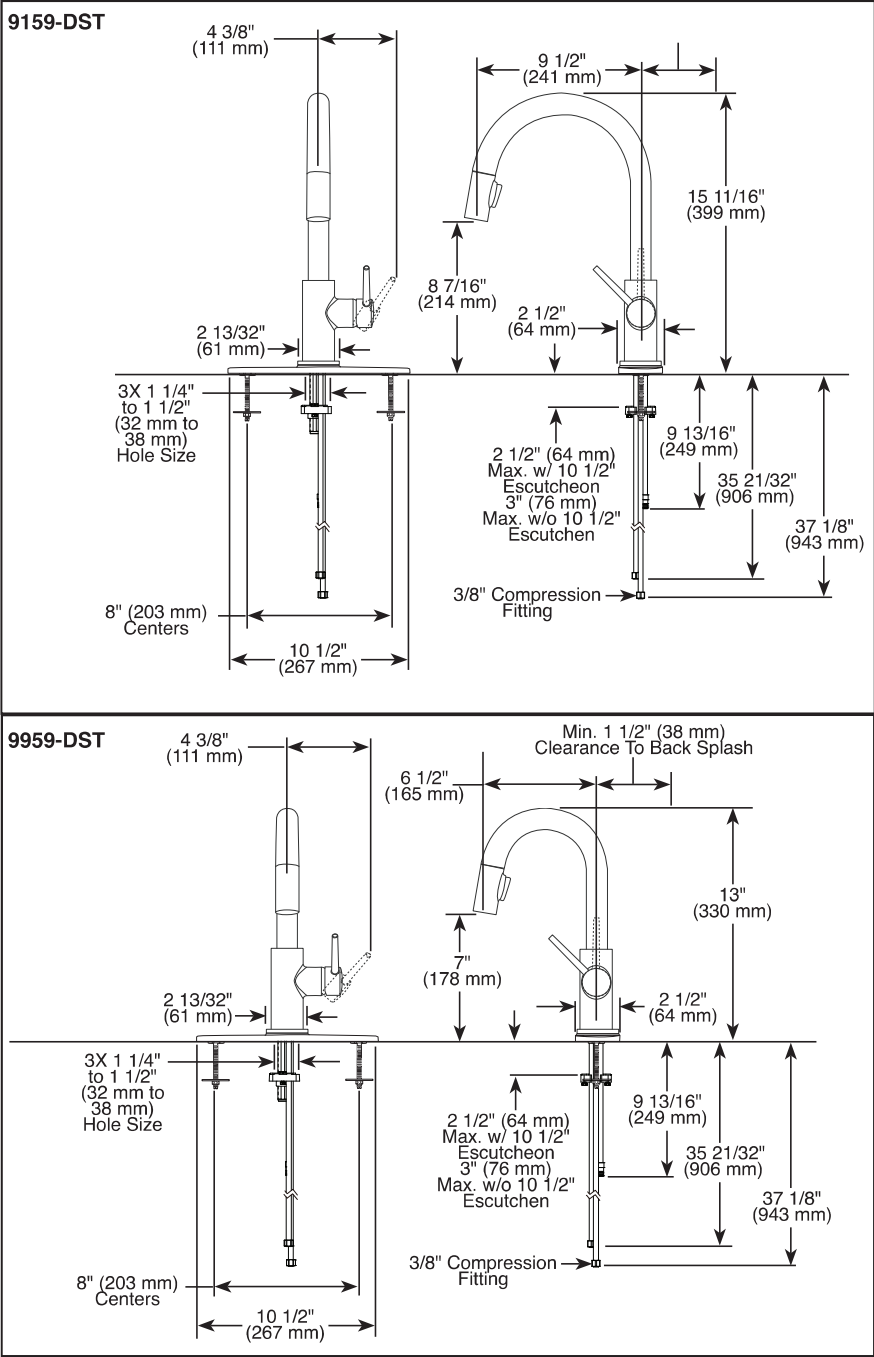
Plug type
standard





Submitted Model No.: _____

Specific Features: _____



▲ Designate proper finish suffix

Delta reserves the right (1) to make changes in specifications and materials, and (2) to change or discontinue models, both without notice or obligation. Dimensions are for reference only. See current full-line price book or www.deltafaucet.com for finish options and product availability.

DSP-K-9159-DST Rev. F



see what Delta can do™

KITCHEN FAUCETS

- Trinsic® Collection
- Single Handle Deck Mount
- 2-Function Pull-Down Sprayer

FEATURES:

- MagnaTite® Magnetic System
- DIAMOND Seal® Technology
- Touch-Clean® Sprayhead


STANDARD SPECIFICATIONS:

- Maximum 1.8 gpm @ 60 psi, 6.8 L/min @ 414 kPa
- One or three hole mount (escutcheon optional, not included)
- Spout rotates 360°
- Control mechanism shall be full-motion valve cartridge
- Two-function wand; Aerated stream or spray
- Red/blue indicator markings
- Dual integral check valves in sprayer
- Quick connect hoses

WARRANTY

- Parts and Finish - Lifetime limited warranty; or for commercial purchasers, 10 years for multi-family residential (apartments and condominiums) and 5 years for all other commercial uses, in each case from the date of purchase.
- Electronic Parts and Batteries (if applicable) - 5 years from the date of purchase; or for commercial purchasers, 1 year from the date of purchase. No warranty is provided on batteries.

COMPLIES WITH:

- ASME A112.18.1 / CSA B125.1
- ASME A112.18.6
-  Indicates compliance to ICC/ANSI A117.1
- Verified compliant with .25% weighted average Pb content regulations.



Delta Faucet Company
55 E. 111th Street, Indianapolis, IN 46280
350 South Edgeware Road, St. Thomas, ON N5P 4L1
© 2019 Delta Faucet Company