



TempAssure 17T Series Contemporary Square Shower Kit

MODEL#: DF-KIT25-THSBL-WS

Finish: **Matte Black**



Edge Duo Shower Shield 42 x 75 in. 8 mm

Model number:

137504

Dimensions: 41-42" x 75"

Installation: Alcove

Door type: Shield



Standard Features:

- 8 mm tempered glass with Lotus glass protection
- Double glass; one fix 24 in. and one pivot 18 in.; This gives you a wide access to get in and out while making the corner watertight
- Easy access to faucets
- The moving panel can tilt slightly inside the tub to prevent water spill
- Fixed panel clears most toilets or vanities

Product characteristics:

- Lotus Easy Clean Glass Protection
- Easy Installation
- Wide Opening

Warranty:

10 Years

Certifications
MAAX products adhere to one or more of the following certifications:



Frame Finish(es):

 Chrome (084)

 Brushed Nickel (305)

Glass Pattern(s):

 Clear (900)

Recommended products (Visit our website for a complete list of our recommended products)

No	Description
101433	Rectangular Base 4832 - 3 in.
105533	Rectangular Base 6034 - 5 in.
105534	Rectangular Base 4834 - 5 in.



Edge Duo Shower Shield 42 x 75 in. 8 mm

Model number:

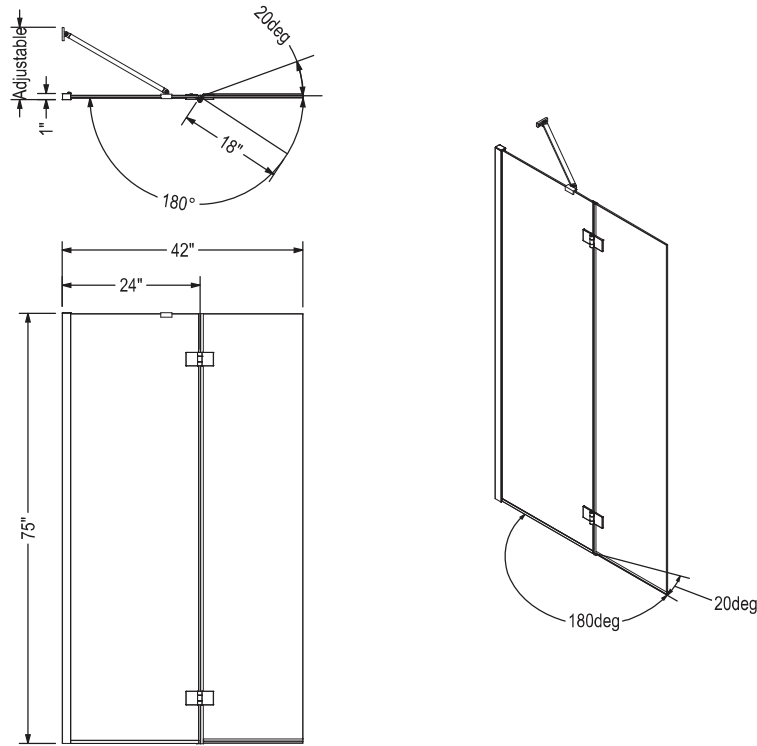
137504

Dimensions: 41-42" x 75"

Installation: Alcove

Door type: Shield

STANDARD



Code	Description	Wall Adjustment
137504	EDGE Duo Shower 42" X 75"	3/8"

All dimensions are approximate. Structure measurements must be verified against the unit to ensure proper fit.

Dimensions:
41-42 x 75 in. (1067-1067 x 1905 mm)
Glass Thickness:
5/16 in. (8 mm)
Weight:
77 lbs (34.92 kg)
Frame type:
Frameless
Opening:
Reversible
Door adjustment:
For out of plumb walls
Minimum access:
(mm)
Maximum access:
(mm)

Project:

Contractor:

Representative:

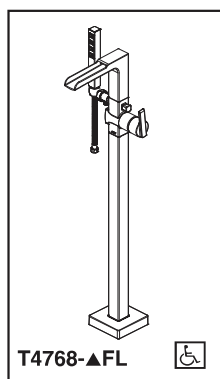
Date:

Tel:

Notes:

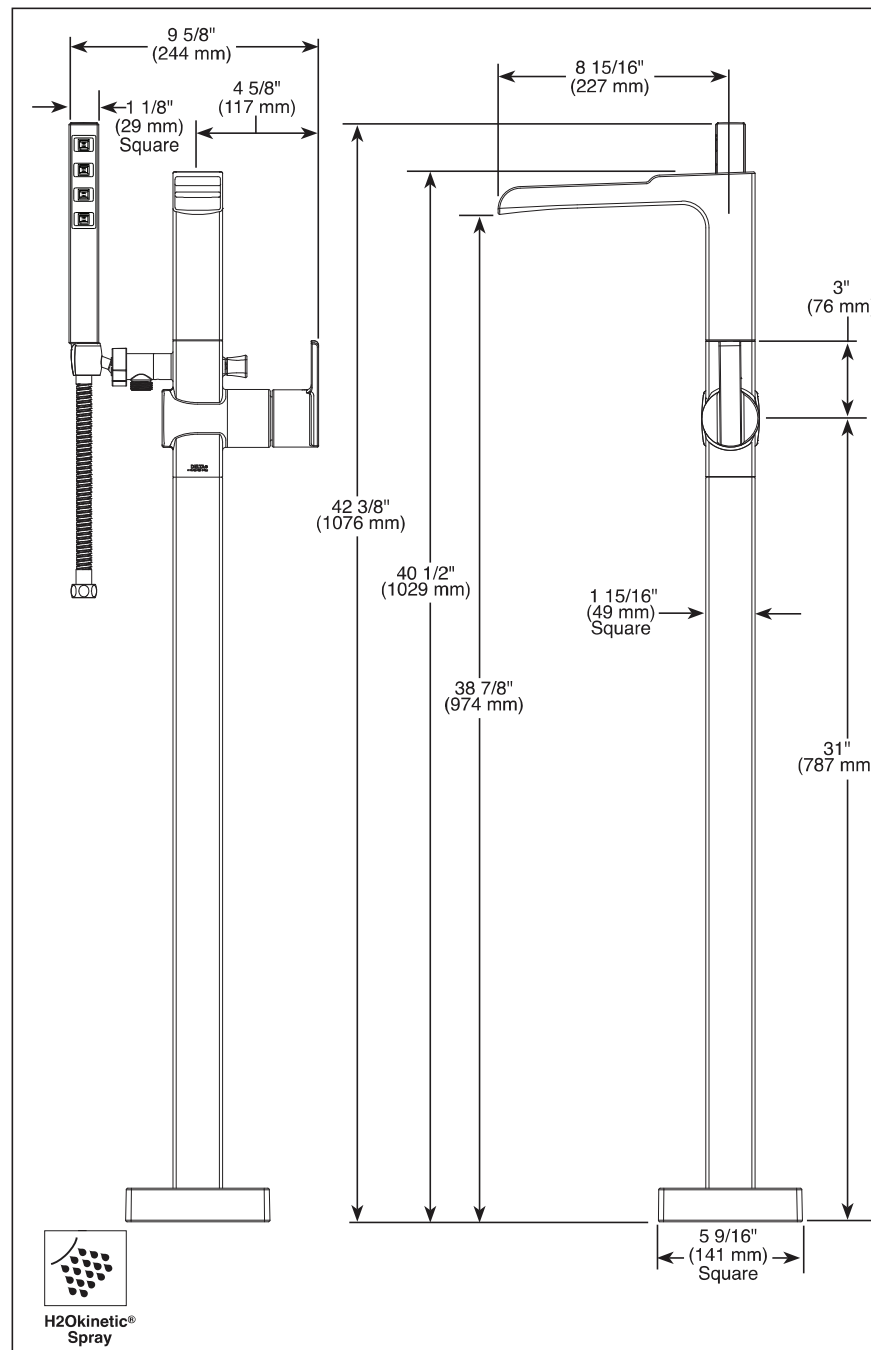
DS
CL

DS
DL



Submitted Model No.: _____

Specific Features: _____



▲ Designate Proper Finish Suffix



see what Delta can doSM

FLOOR MOUNT TUB FILLER

■ Ara™ Bath Collection

FEATURES:

- H₂Okinetic® Technology
- Multichoice® pressure balance cartridge

STANDARD SPECIFICATIONS:

- Handshower maximum flow rate
1.75 gpm @ 80 psi, 6.6 L/Min @ 550 kPa
- Hot and cold indicators
- 60"-82" (1524 mm - 2083 mm) stretchable metal hose with metal fittings
- Auto resetting diverter
- Pivot handshower holder
- Rough-In R4700-FL or R4700-FLWS, required for installation
- Dual integral check valve on handshower

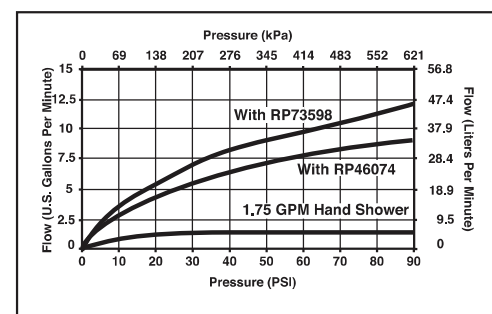
WARRANTY

- Lifetime limited warranty on parts (other than electronic parts and batteries) and finishes; or, for commercial users, for 5 years from date of purchase.
- 5 year limited warranty on electronic parts (other than batteries); or, for commercial users, for 1 year from the date of purchase. No warranty is provided on batteries.



COMPLIES WITH:

- ASME A112.18.1 / CSA B125.1
- Indicates compliance to
ICC/ANSI A117.1 - Valve control only
- EPA WaterSense® - Applies to handshower only- 59567



Delta Faucet Company

55 E. 111th Street, Indianapolis, IN 46280
350 South Edgeware Road, St. Thomas, ON N5P 4L1
© 2017 Delta Faucet Company

Delta reserves the right (1) to make changes in specifications and materials, and (2) to change or discontinue models, both without notice or obligation. Dimensions are for reference only. See current full-line price book or www.deltafaucet.com for finish options and product availability.

DSP-B-T4768-FL Rev. B

Tosca 6732

Model number:

106878

Dimensions:

67" x 32" x 24"

Installation:

Freestanding

Material:

Acrylic



Standard Features:

- Seamless 1-piece bathtub with a symmetrical look
- Large bathing well with comfortable backrests and center drain
- Linear waste and overflow (pre-installed)
- Available in matte or glossy finish with white or black apron
- F2 Drain compatible
- Leveling Legs

Product characteristics:

- 1-Piece Tub
- Modern Minimalist Design
- Limited Distribution

Warranty:

25 Years



Standard colors:



White (001)

Certifications

MAAX products adhere to one or more of the following certifications:



Tosca 6732

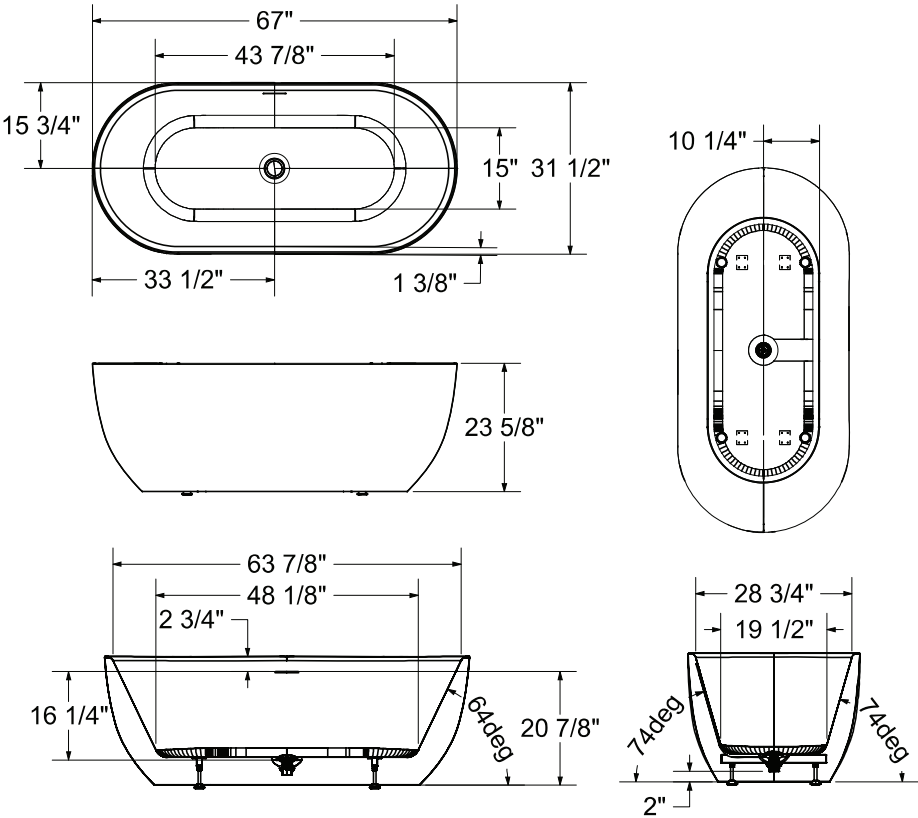
Model number:

106878

Dimensions: 67" x 32" x 24"

Installation: Freestanding

Material: Acrylic



All dimensions are approximate. Structure measurements must be verified against the unit to ensure proper fit.

Dimensions:
67 x 31 1/2 x 23 5/8 in. (1700 x 800 x 600 mm)
Water capacity:
72.82 gallons - 276 liters
Weight:
101.2 lbs - 46 kg
Bathing well:
63 7/8 X 28 3/4 in. (1622 X 730 mm)
Deep sump height:
16 1/4 in. - 413 mm
Drain location:
Center

Project:

Contractor:

Representative:

Date:

Tel:



Notes:

Exhibit 6032

Model number:	105513
---------------	--------

Dimensions: 60" x 32" x 20" Installation: Drop-in Material: Acrylic







Standard Features:
<ul style="list-style-type: none">• Rectangular shape bathtub• Drop-in or alcove installation with tiling flange• Minimalist look with discreet armrests and textured floor• End drain
Product characteristics:
<ul style="list-style-type: none">• Made in North America• Elegant Design• Integrated Armrest
Systems:
 Whirlpool
 Combined Whirlpool/Aeroeffect
 Aeroeffect
Warranty:
25 Years

Standard colors:

	White (001)		Bone (004)		Biscuit (007)
---	-------------	---	------------	---	---------------

Certifications
MAAX products adhere to one or more of the following certifications:



Recommended products (Visit our website for a complete list of our recommended doors)

No	Description
139398	Halo Sliding Tub Door 56 1/2-59 x 59 in. 8 mm
136270	Duel Sliding Tub Door 56-59 x 55 1/2-59 in. 8 mm
137501	Edge Square Tub Shield 34 x 58 in. 8 mm

Options (Visit our website for a complete list of our options)

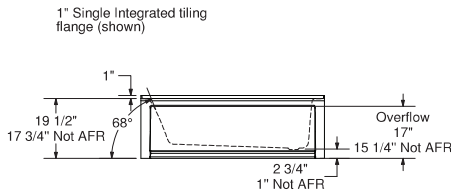
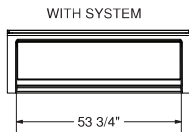
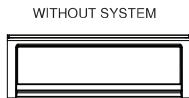
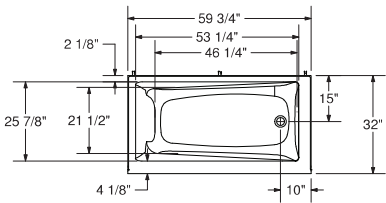
No	Description
<input type="checkbox"/> OPT 20137	Cable-operated waste and overflow
<input type="checkbox"/> OPT 10053	Chromatherapy
<input type="checkbox"/> OPT 10095	Water heater assembly
<input type="checkbox"/> OPT 10106	Metal trim kit for whirlpool and combined systems
<input type="checkbox"/> OPT 20029	Metal trim kit for Air Push Control



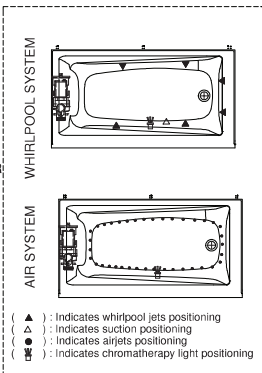
Exhibit 6032

Model number:	105513
---------------	--------

Dimensions: 60" x 32" x 20" Installation: Drop-in Material: Acrylic



Wood support design may vary.
Single Integrated tiling flange: 1" height x 1/4" thickness (shown)
All dimensions are approximate.
Structure measurement must be verified against the unit to ensure proper fit.



Dimensions:
59 3/4 x 31 7/8 x 20 in. (1518 x 810 x 508 mm)
Water capacity:
48 gallons - 182 liters
Weight:
85 lbs - 38.55 kg
Bathing well:
53 1/2 X 26 in. (1359 X 660 mm)
Deep sump height:
16 1/4 in. - 413 mm
Deck width:
2 7/8 in. - 73 mm
Drain location:
End

Project: _____

Contractor: _____

Representative: _____

Date: _____

Tel: _____

Notes: _____

DS CL DS DL

Stair Reference



(2) Spindles per Tread