

UPDATED 2011 MODEL - 600 AND 300 CFM AVAILABLE

Tender

Decorative Collection

traditionally styled value rangehood

- wall canopy rangehood
- sleek styling
- 600 or 300 cfm motor
- 2 halogen lights
- 3 speed LED electronic controls
- 10 minute intensive speed setting
- dishwasher safe grease filters
- convertible to ductless*
- 6" round duct

* it is highly recommended that professional style cooking always be vented to the outside.



Size/Color/Model #

600 CFM models

30 Stainless (NEW) TEND30SS

36 Stainless (NEW) TEND36SS

300 CFM models

30 Stainless (NEW) TEND30SS300

36 Stainless (NEW) TEND36SS300



New backlit electronic controls with a blue LED light to indicate the current speed and lighting on / off

High Ceiling Chimney Kit

One 39" upper chimney to replace 21
10/16" upper chimney that came with hood
Stainless HIGHTNDR

Ductless Conversion Kit

Includes: • Lower Chimney with holes for
ducting • Ductless Diverter Assembly • Vent
Grates • Charcoal Filter
Stainless DUCTTNR

Replacement Charcoal Filter

FILTER1

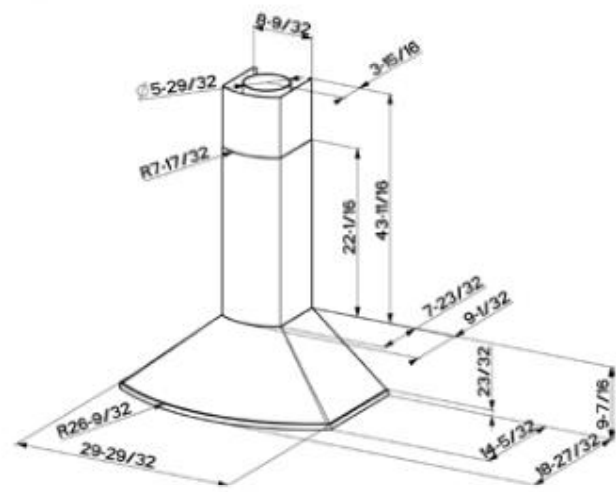


Designed to offer a high-end decorative look while taking into consideration great value. Traditional styling, new advanced electronic touch control features, and solid performance make the Tender a great choice in canopy rangehoods.

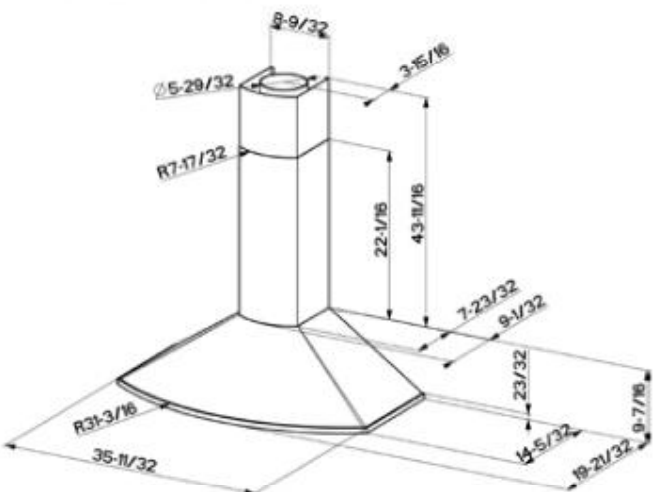


Dimensional Diagrams

30" Ducted

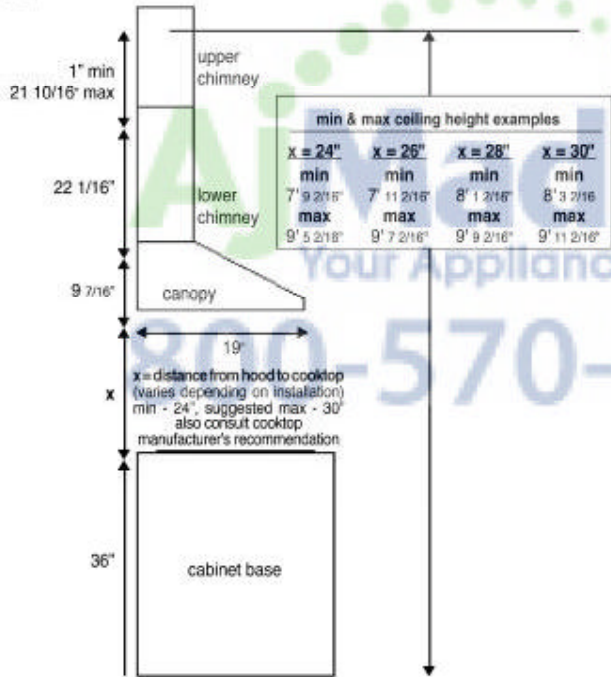


36" Ducted



Pre-Planning Your Installation - Important: Consult the installation instructions before you begin installing this rangehood.

Ducted



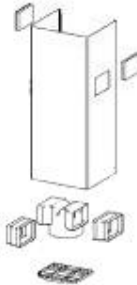
For ducted installations the chimneys are adjustable and designed to meet varying ceiling heights between 7' 9 2/16" and 9' 11 2/16" depending on the distance between the bottom of the hood and the cooktop (distance x in the ducted diagram). For shorter ceilings, have the chimney cover(s) cut at a sheet metal shop. For higher ceiling installations, the **High Ceiling Chimney Kit** includes a new 39" upper chimney which would replace the 21 10/16" upper chimney that came with the hood.

Note: If 24" or 30" **High Backsplash** is being installed, the distance between the bottom of the hood and the cooktop (distance x in diagram) is equal to the height of the **Backsplash**.

Pre-Planning Your Installation - Important: Consult the installation instructions before you begin installing this rangehood.

Make your ductrun as straight and short as possible. The ductrun should not exceed 35 equivalent feet if ducted with the required minimum of 6" round duct. Count 45° angles as 3 feet, 90° elbows as 5 feet, and 90° flat elbows as 12 feet.

For best results, use no more than three 90° elbows. Make sure that there is a minimum of 24" of straight duct between 90° elbows if more than one is used. Do not install two elbows together. If you must elbow right away, do it as far away from the hood's exhaust opening as possible.



Ductless Installations*

For installations where ductwork is impossible or highly impractical, a **Ductless Conversion Kit** is available. A charcoal filter, which attaches under the blower assembly, absorbs smoke and odors. A ductless diverter assembly directs the air out to a lower chimney with vent grates cut into the sides.


* it is highly recommended that professional style cooking always be vented to the outside.

Rev. 07/11


WARNING! Product specifications are subject to change without notification. Consult the installation instructions before you begin installing this rangehood.

4/22/2015

Studio® Concealed Trapway Right Height® Dual Flush Elongated Front toilet with Seat - American Standard - Product Details



Studio® Concealed Trapway Right Height® Dual Flush Elongated Front toilet with Seat - American Standard - Product Details



Style That Works Better

This page was printed from <http://americanstandard.ca>

Product Information

This page was printed from <http://americanstandard-ca.com>

Studio® Concealed Trapway Right Height® Dual Flush Elongated Front toilet with Seat

MODEL #: 2794204, 735168-400, 4000204, 3075120, 5218110, 7381203-200 | COLLECTION: STUDIO



Description

- LXP (Luxury Performance) Toilet
- Combination dual flush bowl and tank, with seat
- 12" (305mm) rough-in
- Siphon action jetted bowl with smooth-sided, concealed trapway
- High efficiency, low consumption
 - Full Flush 1.3 gpf/6.0 Lpf
 - Conserving Flush 0.9 gpf/4.1 Lpf, utilizes 21% less water
- Meets EPA WaterSense® Criteria (Pending)
- EverClean® Surface
- PowerWash™ rim scrubs bowl with each flush
- 16-1/2" (419mm) rim height
- Fully-glazed 2-1/8" trapway
- Oversized 3" flush valve
- Generous 9" x 8" water surface area
- Includes Duroplast slow close seat and cover with concealed seat ring and easy lift-off feature for simple removal and reattachment for cleaning
- Chrome-plated top mounted push button actuator
- 2 colour matched bolt hole covers
- 5 year warranty on entire toilet
- Design coordinates with Studio® and Boulevard® lavatories

Nominal Dimensions -
Length x Width x Height:
30-1/4" x 15-3/4" x 30-3/4"
(769 x 400 x 780mm)

Features and Innovations

- 5 Year Warranty
- EverClean™ Surface
- Right Height
- Toilet Performance - Best - MAP Score between 800-1000g
- Toilet Shape - Elongated
- Water Efficient
- WaterSense® Certified



Buy Now



Product: 7381203-200.0070A
Dual Flush Push Button,Top Mount

\$25.00 Each

Qty

Exhibit 6032

Model number:	105513
---------------	--------

Dimensions: 60" x 32" x 20" Installation: Drop-in Material: Acrylic



Standard Features:
<ul style="list-style-type: none">• Rectangular shape bathtub• Drop-in or alcove installation with tiling flange• Minimalist look with discreet armrests and textured floor• End drain
Product characteristics:
<ul style="list-style-type: none">• Made in North America• Elegant Design• Integrated Armrest
Systems:
Whirlpool
Combined Whirlpool/Aeroeffect
Aeroeffect
Warranty:
25 Years

Standard colors:

White (001)

Bone (004)

Biscuit (007)

Certifications

MAAX products adhere to one or more of the following certifications:

Recommended products (Visit our website for a complete list of our recommended doors)

No	Description
139398	Halo Sliding Tub Door 56 ½-59 x 59 in. 8 mm
136270	Duel Sliding Tub Door 56-59 x 55 ½-59 in. 8 mm
137501	Edge Square Tub Shield 34 x 58 in. 8 mm

Options (Visit our website for a complete list of our options)

No	Description
<input type="checkbox"/> OPT 20137	Cable-operated waste and overflow
<input type="checkbox"/> OPT 10053	Chromatherapy
<input type="checkbox"/> OPT 10095	Water heater assembly
<input type="checkbox"/> OPT 10106	Metal trim kit for whirlpool and combined systems
<input type="checkbox"/> OPT 20029	Metal trim kit for Air Push Control

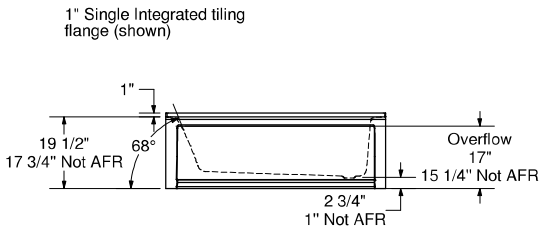
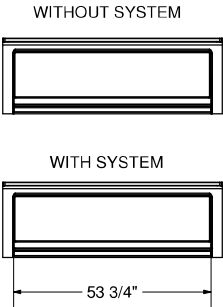
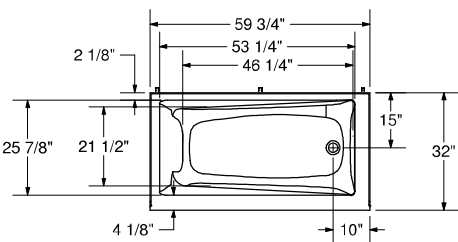


MR Sun

Exhibit 6032

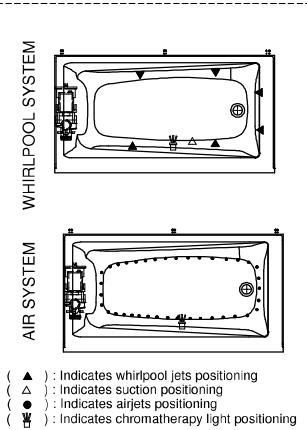
Model number: 105513

Dimensions: 60" x 32" x 20" Installation: Drop-in Material: Acrylic



Wood support design may vary.
Single Integrated tiling flange: 1" height x 1/4" thickness (shown)

All dimensions are approximate.
Structure measurement must be verified against the unit to ensure proper fit.



Dimensions:
59 3/4 x 31 7/8 x 20 in. (1518 x 810 x 508 mm)
Water capacity:
48 gallons - 182 liters
Weight:
85 lbs - 38.55 kg
Bathing well:
53 1/2 X 26 in. (1359 X 660 mm)
Deep sump height:
16 1/4 in. - 413 mm
Deck width:
2 7/8 in. - 73 mm
Drain location:
End

Project: _____

Contractor: _____

Representative: _____

Date: _____

Tel: _____

Notes: _____

