

## LG REFRIGERATION

## LFXS28596\_

3-Door Refrigerator with InstaView™  
Door-in-Door®

InstaView™ Door-in-Door®

Ultra-Large Capacity, 27.5 cu. ft.

PrintProof™ Finish

Slim SpacePlus® Ice System

Dual Ice Maker

Smart Cooling® System

Door Cooling Plus

Glide N' Serve® Drawer

LoDecibel™ Quiet Operation

LG SmartThinQ® App Compatible

SmartDiagnosis™

ENERGY STAR® Qualified



Enjoy new ways to control your  
home with LG smart appliances

- Get an alert when kids forget to close the door
- Make more ice while you're at work
- Works with LG SmartThinQ® app

SmartThinQ®

works with the  
Google Assistant

amazon alexa

CAPACITY	
Refrigerator (cu.ft.)	18.20
Freezer (cu.ft.)	9.30
Total Capacity (cu.ft.)	27.5
ENERGY	
Energy Consumption (kWh/Year)	724
ENERGY STAR® Qualified	Yes
WATER & ICE SYSTEM	
Ice & Water Dispenser	Yes
Dispenser Type	Integrated Tall Ice & Water Dispenser
Daily Ice Production (lbs)	6.0 lbs.
IcePlus™ Production (lbs)	6.5 lbs.
Ice Storage Capacity (lbs)	2.5 + 4.0 lbs
Ice System	Slim SpacePlus®
Dual Ice	Yes
Dispenser Light	Yes
Water Filter	LT1000P
COOLING	
Linear Compressor	Yes
Smart Cooling® System	Yes
Multi-Air Flow Cooling	Yes
Temperature Sensors	6
Fresh Air Filter	Yes
Evaporator	Yes
CONVENIENCE	
Display Type	Membrane/White LED
Temperature Controls	Electronic/Digital
Door Alarm	Yes
Child Lock	Yes
Auto Closing Door Hinge	Yes
LoDecibel™ Quiet Operation	Yes
REFRIGERATOR	
No. of Shelves	4 Split (3 Fixed + 1 Folding)
Folding Shelf	1
Cantilevered Shelves	Hybrid Cantilevered
Shelf Construction	Spill Protector™ Tempered Glass
Crisper Bins	2 Humidity Crispers
Glide N' Serve® Drawer	Yes
Refrigerator Light	Ceiling LED
REFRIGERATOR DOOR	
InstaView™ Door-in-Door®	Yes
No. of Bins	7 Total (Including Door-in-Door®)
Door Bin Construction	1 Piece (Clear)
FREEZER	
Door Type	Pull Drawer
Drawers	2-Tier Organization
Auto Open Drawer™ (Freezer)	Yes



DuraBase™ Solid Drawer Base	Yes
Drawer Divider	Yes
Freezer Light	LED Lighting
Freezer Handle	SmartPull™ Handle
SmartThinQ® SMART FEATURES	
wi-fi Enabled	Yes
Voice Activation	Yes
Works with	Google Assistant and Amazon Alexa
Smart Grid Ready	Yes
SmartDiagnosis™	Yes
MATERIALS AND FINISHES	
Contour Door	Yes
Hidden Hinges	Yes
Surface	Smooth
Back	Flush & Metal Cover Over Mechanical Parts
Handles	Matching Commercial Handles
All Available Colors	Matte Black Stainless Steel, Black Stainless Steel, Stainless Steel
DIMENSIONS/CLEARANCES/WEIGHTS	
Depth with Handles	36 1/4"
Depth without Handles	33 3/4"
Depth without Door	29 7/8"
Depth (Total with Door Open)	48 1/4"
Height to Top of Case	68 3/8"
Height to Top of Door Hinge	69 3/4"
Width	35 3/4"
Width (Door Open 90° with Handle)	44 1/4"
Width (Door Open 90° without Handle)	39 1/4"
Door Edge Clearance with Handle	4 1/2"
Door Edge Clearance without Handle	1 1/3"
Installation Clearance	Sides 1/8", Top 1", Back 2"
Weight (Unit/Carton)	323 lbs. / 348 lbs.
Carton Dimensions (WxHxD)	38" x 73" x 39"
LIMITED WARRANTY	
Parts & Labor	1 Year
Sealed System (Parts & Labor)	5 Years
Compressor (Parts & Labor)	5 Years
Linear Compressor (Parts Only)	6-10 Years
UPC CODES	
LFXS28596M (Matte Black Stainless Steel)	048231797184
LFXS28596D (Black Stainless Steel)	048231794817
LFXS28596S (Stainless Steel)	048231794824



## SC500/SCB500

### Alito Collection | Wall Mount

Strong and sturdy with attractive lines and an imposing frame, the SC(B)500 is fitted with time-delay OFF feature up to nine minutes, **550 CFM fan**, bright LED lights and a digital three-speed push button control panel.

[Where To Buy 🛒](#)[Features](#)[Green Features](#)[Specifications](#)[Options](#)[Parts](#)

Manuals & Literature

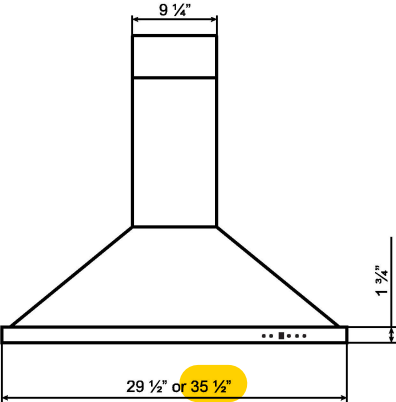
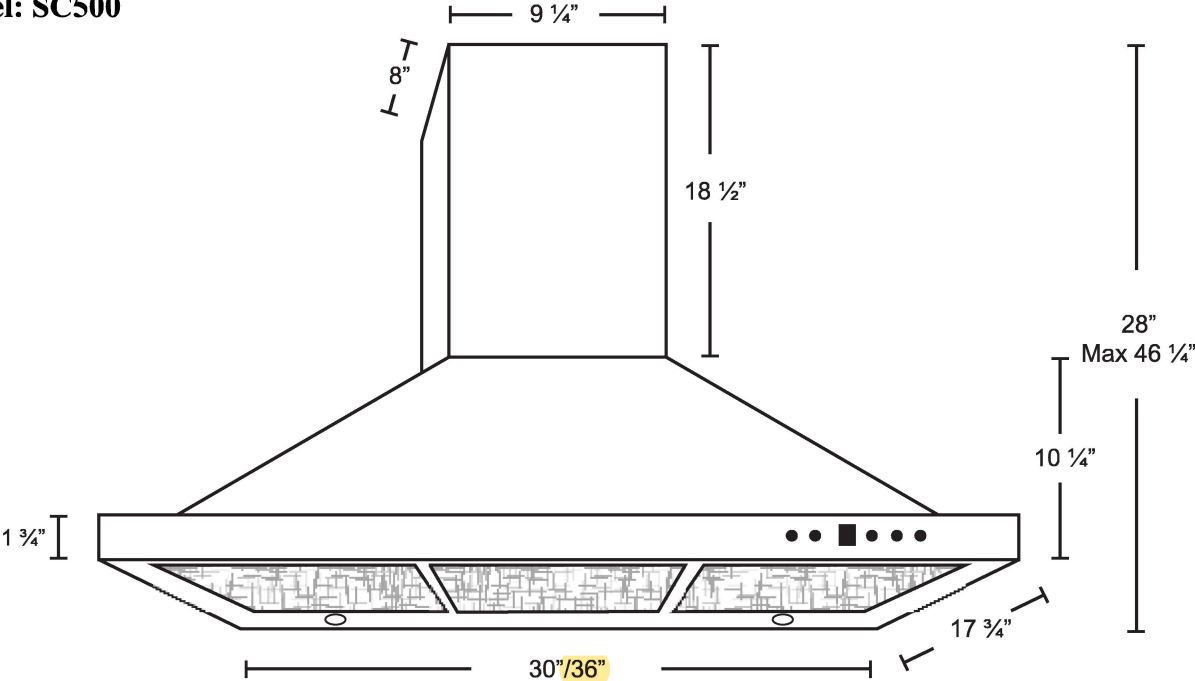
# Specifications

PWY2- 308- Kitchen Hood Fan

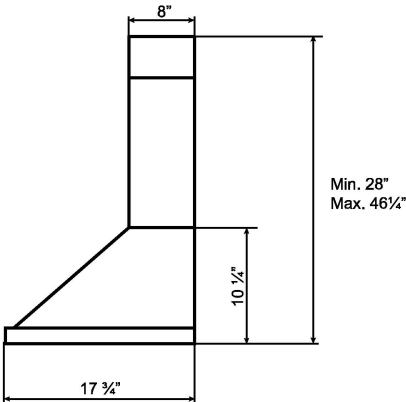
Air Flow Volume:	550 CFM
Electrical Connection:	120V/60Hz
Power Consumption:	240 Watts
Current:	2.0 Amps
Fan Speed:	1599 RPM
Fan Type:	Centrifugal Blower
Finishes:	Stainless Steel
Ducting:	6" Round
Dimensions:	Width: 23 ¾" / 30" / 36" Height: 45 ¼" Depth: 17 ¾"
Noise Level	Min. 2 Sones Max. 6 Sones

Specifications: Alito Collection - Wall Mount

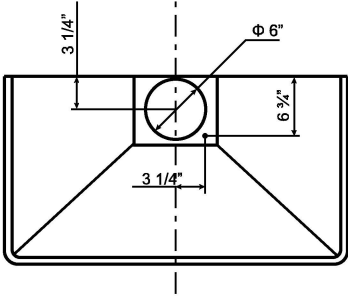
Model: SC500



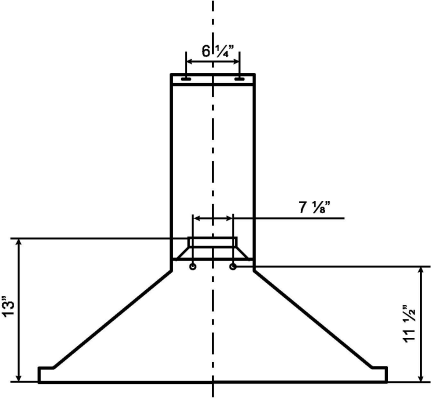
FRONT



SIDE



TOP



BACK

# 30" Speed Combination Oven

800 Series – Stainless Steel HBL8753UC



PWY2- 308



**HBL8753UC**  
Stainless Steel

Also available in:

Black HBL8743UC  
Stainless Steel

**Bosch speed combination ovens create an all-in-one cooking center with an upper speed oven and a Genuine European Convection oven below.**

## Features & Benefits

2-in-1 microwave and convection oven with 9 SpeedChef® programs to simplify cooking with fast results.

Lower oven's convection multi-rack mode gives uniform baking results even when using all 3 racks simultaneously.

Oven is equipped with a self-cleaning cycle that easily cleans itself via 2, 3, and 4 hour cycle options.

Download the Home Connect app to remotely monitor and control your Bosch wall oven with your smart phone or tablet.

## General Properties

Home Connect™ – lower cavity (WiFi enabled)	Yes
Cooking modes – upper cavity	Speed oven; 12 Auto Programs (including Auto Defrost, Melt Butter, Soften Ice Cream, Pizza), 9 Sensor Cook Programs, 9 SpeedChef® Programs, Hi & Lo Broil, European Convection, Keep Warm, Frozen Foods
Cooking modes – lower cavity	Bake, Variable Broil (hi & low), Roast, Warm, Sabbath, Proof Dough, Convection Bake, Convection Broil, Convection Roast, Pizza, Multi Rack Genuine European Convection, Convection Conversion, Temperature Probe, Fast Preheat

Cleaning type – lower	Self Clean
Telescopic rack	1
Illumination type	LED (Upper) / Halogen (Lower)
Interior lights	1 Upper / 2 Lower

## Oven Performance

Microwave power – upper cavity	1000 W
Bake / broil element wattages – upper cavity	600 / 1,750 W
Convection element wattages – upper cavity	1,700 W
Bake / broil element wattages – lower cavity	2,400 / 3,800 W
Convection element wattages – lower cavity	2,000 W

## Technical Details

Watts (W)	9,600 W
Circuit breaker (A)	40 A
Volts (V); Frequency (Hz)	240 / 208 V; 60 Hz
Power cord length (in)	50"
Plug type	Fixed Connection, No Plug
Energy source	Electric

## Dimensions & Weight

Overall appliance dimensions (HxWxD) (in)	49" x 29 3/4" x 24 1/2"
Required cutout size – Standard (HxWxD) (in)	48 5/8" x 28 1/2" x 23 1/2"
Required cutout size – Flush (HxWxD) (in)	49 1/8" x 30" x 24 1/2"
Speed oven cavity size – upper	1.6 cu. ft.
Overall upper speed oven interior dimensions (HxWxD) (in.)	9 7/8" x 16 1/2" x 16 1/2"
Metal turntable diameter (in)	14 1/8" dia.
Ceramic tray diameter (in)	13 3/4" dia.
Rack – rectangular cookware max. – upper	15" x 12"
Oven cavity size – lower	4.6 cu. ft.
Overall lower oven interior dimensions (HxWxD) (in)	17 13/16" x 24 1/8" x 18"
Usable lower oven interior dimensions (HxWxD) (in)	12 1/4" x 23 1/4" x 15 1/4"
Net weight (lbs)	259 lbs

## Accessories – Included

Upper Oven: Metal Turntable, Square rack, Ceramic Cooking Tray  
Lower Oven: 1 Telescopic and 2 Standard Oven Racks, Meat Probe

## Accessories – Optional



**HEZTR301**  
30" Telescopic Rack



\*Lower wall oven only

**Accessories:** To purchase Bosch accessories, cleaners & parts please visit [www.bosch-home.com/us/store](http://www.bosch-home.com/us/store) or call 1-800-944-2904 (Mon to Fri 5 am to 6 pm PST, Sat 6 am to 3 pm PST).

**Notes:** All height, width and depth dimensions are shown in inches. BSH reserves the absolute and unrestricted right to change product materials and specifications, at any time, without notice. Consult the product's installation instructions for final dimensional data and other details prior to making cutout.

**Warranties:** Please see Use & Care manual or Bosch website for statement of limited warranty.

**For more information on our entire line of products, go to [www.bosch-home.com/us](http://www.bosch-home.com/us) or call 1-800-944-2904**

© BSH Home Appliances Corporation. All rights reserved. Bosch is a registered trademark of Robert Bosch GmbH.

# 30" Speed Combination Oven

800 Series – Stainless Steel HBL8753UC

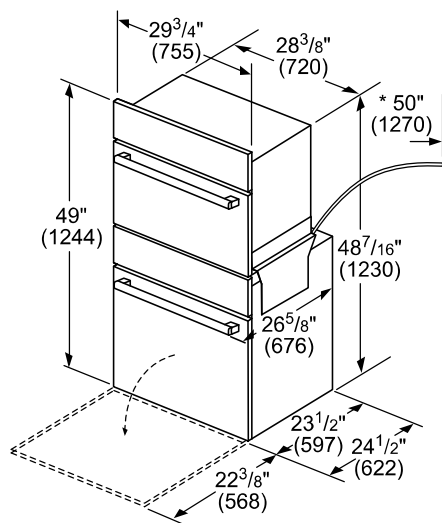


**BOSCH**

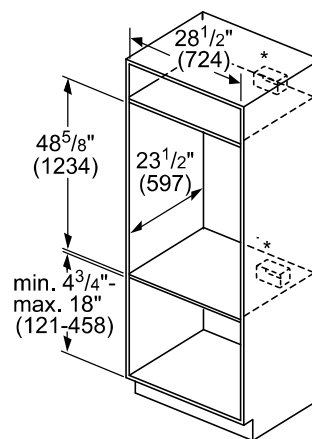
Invented for life

PWY2- 308

## Installation Details



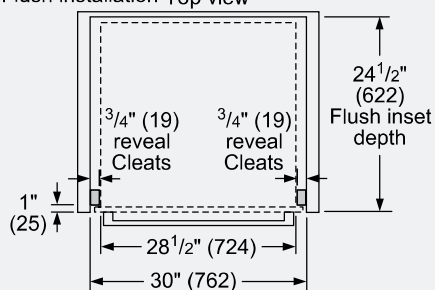
\* Power cable 50" (1270 mm) from the lower oven.



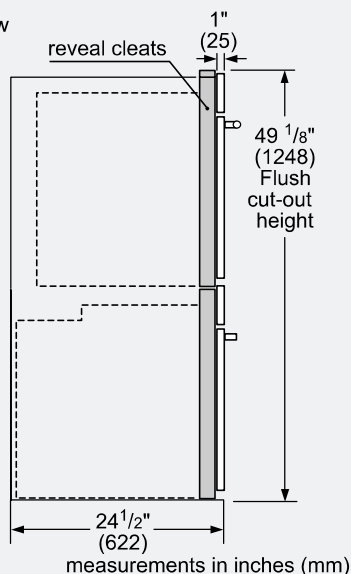
\* Junction box may be installed above, below, or to the left or right of the unit within reach of the power cable

measurements in inches (mm)

Flush installation Top view



Side view



Example Flush Install



Single wall oven shown.

**Accessories:** To purchase Bosch accessories, cleaners & parts please visit [www.bosch-home.com/us/store](http://www.bosch-home.com/us/store) or call 1-800-944-2904 (Mon to Fri 5 am to 6 pm PST, Sat 6 am to 3 pm PST).

**Notes:** All height, width and depth dimensions are shown in inches. BSH reserves the absolute and unrestricted right to change product materials and specifications, at any time, without notice. Consult the product's installation instructions for final dimensional data and other details prior to making cutout.

**Warranties:** Please see Use & Care manual or Bosch website for statement of limited warranty.

**For more information on our entire line of products, go to [www.bosch-home.com/us](http://www.bosch-home.com/us) or call 1-800-944-2904**

© BSH Home Appliances Corporation. All rights reserved. Bosch is a registered trademark of Robert Bosch GmbH.

# 30" Speed Combination Oven

800 Series – Stainless Steel HBL8753UC



**BOSCH**

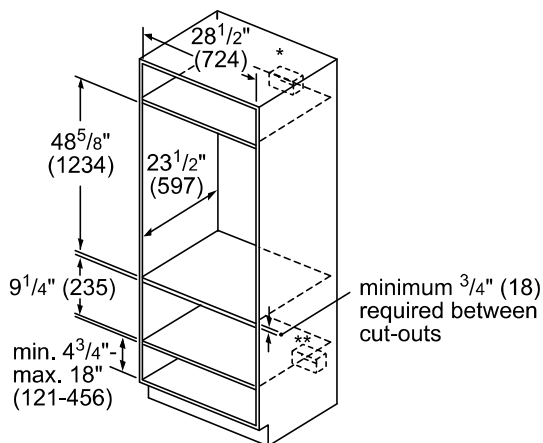
Invented for life

PWY2- 308

## Installation Details

### Standard Installation

Combination oven over storage or warming drawer



\* Wall oven junction box may be located above or to the right or left of the unit within reach of the power cable.

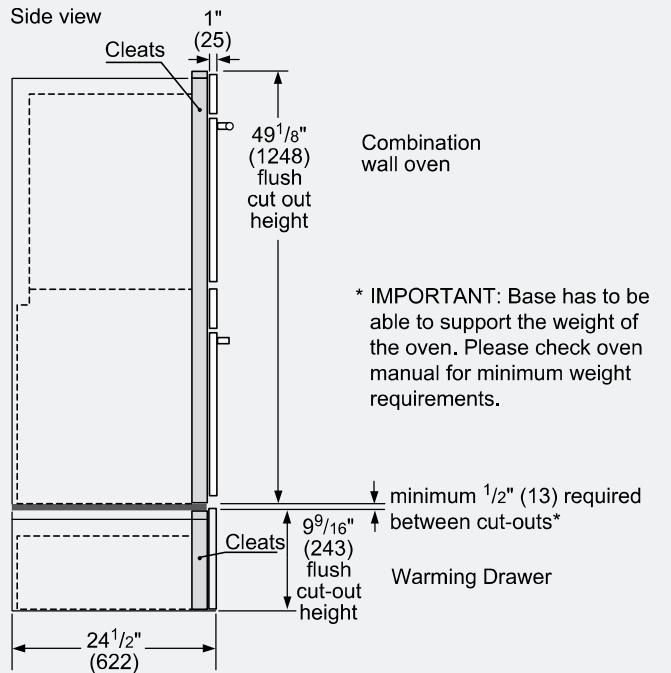
\*\*Electrical hook-up may be located below (depending on space) or next to the drawer within reach of the power cable.

measurements in inches (mm)

### Flush installation

Combination oven over storage or warming drawer

Side view



Combination wall oven

\* IMPORTANT: Base has to be able to support the weight of the oven. Please check oven manual for minimum weight requirements.

Warming Drawer

measurements in inches (mm)

**Accessories:** To purchase Bosch accessories, cleaners & parts please visit [www.bosch-home.com/us/store](http://www.bosch-home.com/us/store) or call 1-800-944-2904 (Mon to Fri 5 am to 6 pm PST, Sat 6 am to 3 pm PST).

**Notes:** All height, width and depth dimensions are shown in inches. BSH reserves the absolute and unrestricted right to change product materials and specifications, at any time, without notice. Consult the product's installation instructions for final dimensional data and other details prior to making cutout.

**Warranties:** Please see Use & Care manual or Bosch website for statement of limited warranty.

**For more information on our entire line of products, go to [www.bosch-home.com/us](http://www.bosch-home.com/us) or call 1-800-944-2904**

© BSH Home Appliances Corporation. All rights reserved. Bosch is a registered trademark of Robert Bosch GmbH.

06/20

# 36" Gas Cooktop

800 Series – Stainless Steel NGM8656UC



**BOSCH**

Invented for life

PWY2- 308



**NGM8656UC**  
Stainless Steel

Also available in:

Black w/Black NGM8646UC  
Stainless  
Knobs

**Bosch gas cooktops are engineered to perform precisely, offering high heat and low simmer options for optimal cooking flexibility.**

## Features & Benefits

Powerful 19,000 BTU burner for boiling, searing and stir-frying

OptiSim® Burner – simmer delicate sauces and melt chocolate without scorching

Electronic re-ignition will automatically re-ignite the burner in case the flame goes out

Continuous grates make moving heavy pots easier

Distinctive red LED light indicates burners are on

## General Properties

Knob material	Metal
Sealed burners	Yes
Grate material	Cast iron

## Element Performance

Total BTU load (NG / LP)	58,500 / 47,300
Power of front left burner (NG / LP)	12,000 / 9,100
Power of back left burner (NG / LP)	10,000 / 9,100
Power of center burner (NG / LP)	19,000 / 15,000
Power of back right burner (NG / LP)	5,500 / 5,000
Power of front right burner (NG / LP)	12,000 / 9,100

## Technical Details

Watts	360 W
Circuit breaker	15 A
Volts	120 V
Frequency	60 Hz
Plug type	3 prong
Power cord length	60"
Energy source	Gas
Convertible to LP (kit required)	Yes



## Dimensions & Weight

Overall appliance dimensions (HxWxD)	3 13/16" x 37" x 21 1/4"
Required cutout size (HxWxD)	3 13/16" x 34 15/16" x 19 1/8"
Minimum distance from counter front	1 7/8"
Minimum distance from rear wall	3"
Net weight	39 lbs

## Accessories – Included

Included	LP conversion kit
----------	-------------------

## Accessories – Optional



**HEZ298102**  
Wok ring



**HEZ27751**  
Cooktop control knob kit,  
black stainless steel

† To be fully ADA compliant, these units must be installed according to ADA guidelines. Please check current ADA requirements for guidance on installation.

**Accessories:** To purchase Bosch accessories, cleaners & parts please visit [www.bosch-home.com/us/store](http://www.bosch-home.com/us/store) or call 1-800-944-2904 (Mon to Fri 5 am to 6 pm PST, Sat 6 am to 3 pm PST).

**Notes:** All height, width and depth dimensions are shown in inches. BSH reserves the absolute and unrestricted right to change product materials and specifications, at any time, without notice. Consult the product's installation instructions for final dimensional data and other details prior to making cutout.

**Warranties:** Please see Use & Care manual or Bosch website for statement of limited warranty.

**For more information on our entire line of products, go to [www.bosch-home.com/us](http://www.bosch-home.com/us) or call 1-800-944-2904**

© BSH Home Appliances Corporation. All rights reserved. Bosch is a registered trademark of Robert Bosch GmbH.



# 36" Gas Cooktop

800 Series – Stainless Steel NGM8656UC

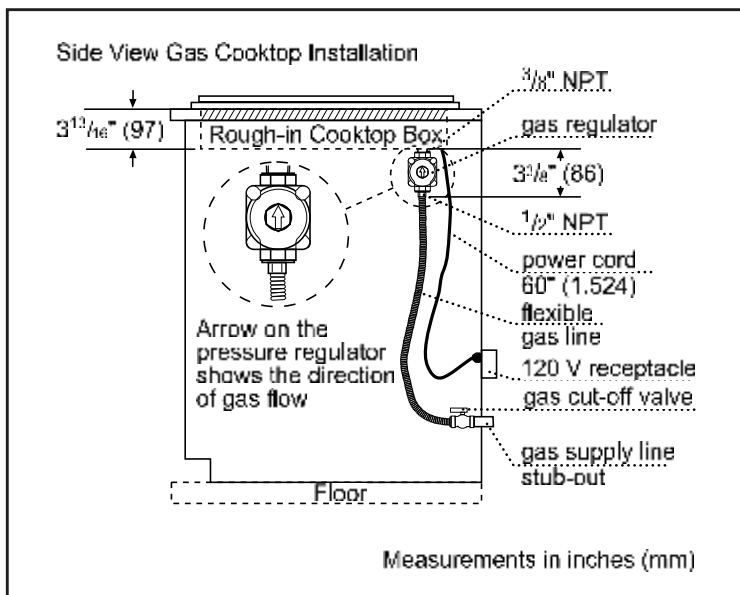
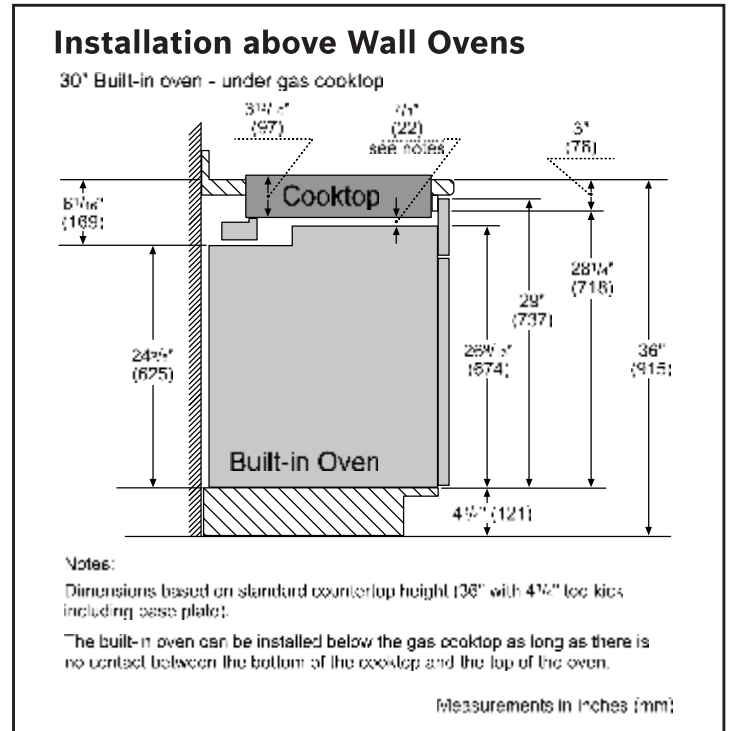
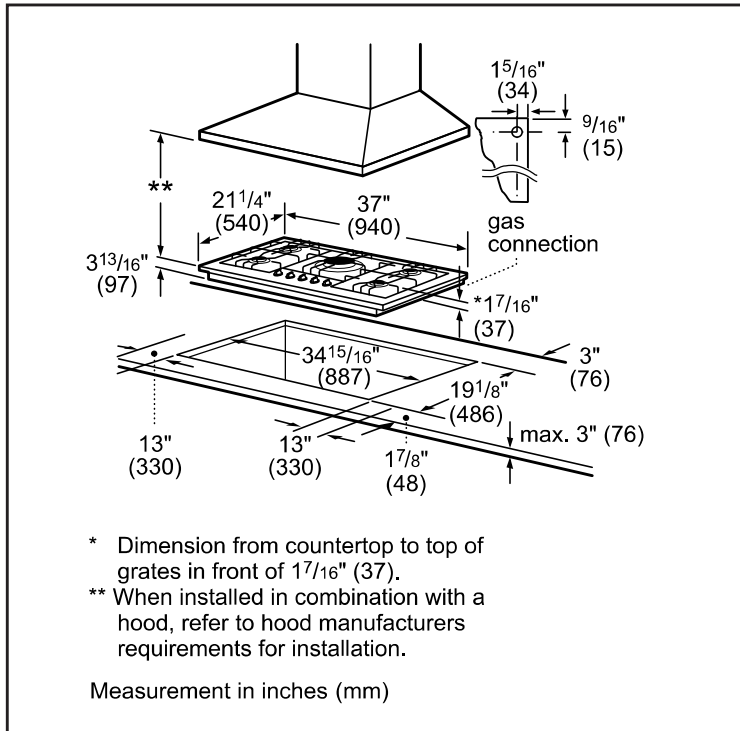


**BOSCH**

Invented for life

PWY2- 308

## Installation Details



**Accessories:** To purchase Bosch accessories, cleaners & parts please visit [www.bosch-home.com/us/store](http://www.bosch-home.com/us/store) or call 1-800-944-2904 (Mon to Fri 5 am to 6 pm PST, Sat 6 am to 3 pm PST).

**Notes:** All height, width and depth dimensions are shown in inches. BSH reserves the absolute and unrestricted right to change product materials and specifications, at any time, without notice. Consult the product's installation instructions for final dimensional data and other details prior to making cutout.

**Warranties:** Please see Use & Care manual or Bosch website for statement of limited warranty.

**For more information on our entire line of products, go to [www.bosch-home.com/us](http://www.bosch-home.com/us) or call 1-800-944-2904**

© BSH Home Appliances Corporation. All rights reserved. Bosch is a registered trademark of Robert Bosch GmbH.

# 36" Gas Cooktop

800 Series – Stainless Steel NGM8656UC

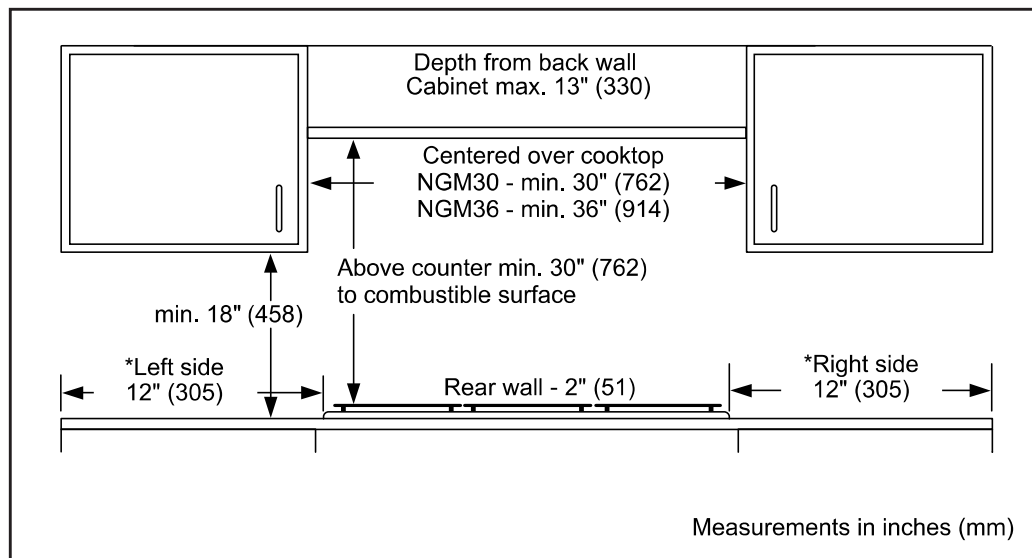


**BOSCH**

Invented for life

PWY2- 308

## Installation Details



**Accessories:** To purchase Bosch accessories, cleaners & parts please visit [www.bosch-home.com/us/store](http://www.bosch-home.com/us/store) or call 1-800-944-2904 (Mon to Fri 5 am to 6 pm PST, Sat 6 am to 3 pm PST).

**Notes:** All height, width and depth dimensions are shown in inches. BSH reserves the absolute and unrestricted right to change product materials and specifications, at any time, without notice. Consult the product's installation instructions for final dimensional data and other details prior to making cutout.

**Warranties:** Please see Use & Care manual or Bosch website for statement of limited warranty.

**For more information on our entire line of products, go to [www.bosch-home.com/us](http://www.bosch-home.com/us) or call 1-800-944-2904**

© BSH Home Appliances Corporation. All rights reserved. Bosch is a registered trademark of Robert Bosch GmbH.

# 36" Gas Cooktop

800 Series – Stainless Steel NGM8656UC



**BOSCH**

Invented for life

PWY2- 308

## Bosch Cooktop over Built-In Oven Approved Combination Guide

The following **OVENS, COOKTOPS AND DRAWERS** are approved to be installed in combination and the installation has been certified by CSA.

Built-in ovens		Cooktops		
Conventional ovens (1)	Steam ovens	Induction	Electric	Gas (1) *
HBL5351UC, HBL5354UC	HSLP451UC, HSLP454UC	NIT5068UC	NET8068UC	NGM8046UC
HBL5451UC, HBL5344UC		NIT5668UC, NIT5469UC	NET8068SUC	NGM5656UC
HBL8443UC, HBL5454UC		NIT8068UC, NIT8068SUC	NET8668UC	NGMP656UC
HBL8453UC, HBL8444UC		NIT8668UC, NIT8668SUC	NET8668SUC	NGM8656UC
HBL8451UC, HBL8444LUC		NITP068UC, NITP068SUC	NETP068SUC	NGM8646UC
HBL8463UC, HBL8444RUC		NITP668UC, NITP668SUC	NETP668SUC	NGM5656UC
HBL8461UC, HBL8454UC		NIT8069UC, NIT8069SUC	NEM5066UC	NGMP056UC
HBL8442UC, HBLP454UC		NIT8669UC, NIT8669SUC	NEM5666UC	NGM8056UC
HBLP451UC, HBLP454LUC		NITP069UC, NITP069SUC		Gas (2) *
HBLP451LUC, HBLP454RUC		NITP669UC, NITP669SUC		NGM5456UC
HBLP451RUC, HBN8454UC				Gas (3) *
HBN5451UC, HBN8451UC				NGMP077UC
Conventional ovens (2)				NGMP677UC
HBE5451UC				NGM8657UC
Conventional ovens (3)				NGM8057UC
HBE5452UC				

The following **OVENS, COOKTOPS AND DRAWERS** are approved by BSH Home Appliances Corporation to be installed in combination. These products, identified in the table below, may be installed in combination. The suitability of the combination has not been evaluated by CSA.

Built-in ovens		Cooktops		
Conventional ovens (2)	Speed oven (1)	Induction (1)	Electric (1)	Gas (1) *
HBE5453UC	HMCP0252UC, HMCP0254UC	NIT5068UC	NET8068UC	NGM8046UC
Built-In microwave	HMC80242UC, HMC80244UC	NIT5668UC, NIT5469UC	NET8068SUC	NGM5656UC
HMB57152UC	HMC80252UC, HMC80254UC	NIT8068UC, NIT8068SUC	NET8668UC	NGMP656UC
HMB50162UC	HMC87152UC, HMC87154UC	NIT8668UC, NIT8668SUC	NET8668SUC	NGM8656UC
HMB50152UC	HMC80152UC, HMC50154UC	NITP068UC, NITP068SUC	NETP068SUC	NGM8646UC
HMB87154UC		NITP668UC, NITP668SUC	NETP668SUC	NGM5656UC
HMB50154UC		NIT8069UC, NIT8069SUC	NEM5066UC	NGMP056UC
Storage drawer	Speed oven (2)	NIT8669UC, NIT8669SUC	NEM5666UC	NGM8056UC
HSD5051UC	HMC54151UC	NITP069UC, NITP069SUC		Gas (2) *
Drawer microwave	HMC54152UC	NITP669UC, NITP669SUC		NGM5456UC
HMD8053UC	HMC54154UC			Gas (3) *
HMD8451UC				NGMP077UC
Warming drawers				NGMP677UC
HWD5051UC				NGM8657UC
HWD5751UC				NGM8057UC

\*Gas cooktops may require a 3/8" street elbow (not provided) at the regulator outlet for installation above built-in oven.

COOKTOPS that are not listed above must be approved under local codes and/or by the local authority having jurisdiction.

Please note: For the latest updates to the approved oven/cooktop combination refer to the website listed in your appliance's installation instructions.

**Accessories:** To purchase Bosch accessories, cleaners & parts please visit [www.bosch-home.com/us/store](http://www.bosch-home.com/us/store) or call 1-800-944-2904 (Mon to Fri 5 am to 6 pm PST, Sat 6 am to 3 pm PST).

**Notes:** All height, width and depth dimensions are shown in inches. BSH reserves the absolute and unrestricted right to change product materials and specifications, at any time, without notice. Consult the product's installation instructions for final dimensional data and other details prior to making cutout.

**Warranties:** Please see Use & Care manual or Bosch website for statement of limited warranty.

**For more information on our entire line of products, go to [www.bosch-home.com/us](http://www.bosch-home.com/us) or call 1-800-944-2904**

© BSH Home Appliances Corporation. All rights reserved. Bosch is a registered trademark of Robert Bosch GmbH.

# 36" Gas Cooktop

800 Series – Stainless Steel NGM8656UC



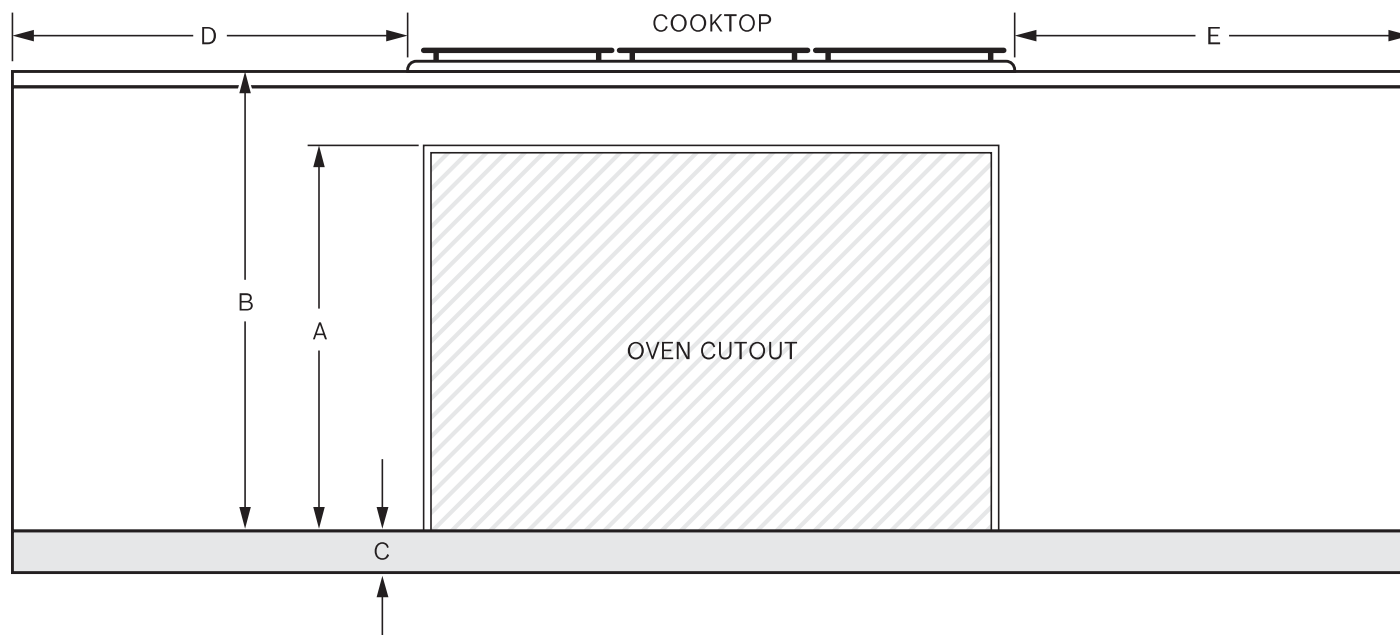
**BOSCH**  
Invented for life

PWY2- 308

## Cooktop over built-in oven combination installation

Refer to the product installation guide for all other measurements.

Oven installation requirements				Cooktop installation requirements (wall spacing)				
When installing an oven or oven with a drawer in combination with a cooktop, a minimum distance between the cabinet floor and countertop (B) is required. Reference the table for dimensions. Refer to the oven installation guide for all other measurements.								
Oven type	A Inches (mm)	B min. Inches (mm)	C max. Inches (mm)	Gas cooktop (1) min. Inches (mm)	Gas cooktop (2) min. Inches (mm)	Gas cooktop (3) min. Inches (mm)	Electric cooktop	Induction cooktop
Conventional oven (1)	28 1/4 (718)	31 1/4 (794)	4 3/4 (121)	D: 24 (610) E: 24 (610)	D: 3 (76) E: 4 (102)	D: 24 (610) E: 24 (610)	Reference Product Installation Instructions	
Conventional oven (2)	23 (584)	27 3/4 (705)	8 1/4 (210)	D: 24 (610) E: 24 (610)	D: 3 (76) E: 4 (102)	D: 24 (610) E: 24 (610)	Reference Product Installation Instructions	
Conventional oven (3)	23 1/16 (585)	27 13/16 (707)	8 3/16 (208)	D: 24 (610) E: 24 (610)	D: 3 (76) E: 4 (102)	D: 24 (610) E: 24 (610)	Reference Product Installation Instructions	
Steam oven	19 1/4 (488)	23 3/8 (594)	12 5/8 (321)	D: 24 (610) E: 24 (610)	D: 3 (76) E: 4 (102)	D: 24 (610) E: 24 (610)	Reference Product Installation Instructions	
Steam oven with 4" storage drawer								
Speed oven (2)	17 3/4 (450)	22 1/2 (572)	13 1/2 (343)	D: 24 (610) E: 24 (610)	D: 3 (76) E: 4 (102)	Reference Product Installation Instructions		
Microwave speed oven (1)	19 1/4 (488)	24 (609)	12 (306)	D: 24 (610) E: 24 (610)	D: 3 (76) E: 4 (102)	Reference Product Installation Instructions		
Microwave speed oven (1) with warming drawer	28 1/4 (718)	31 1/4 (794)	4 3/4 (121)	D: 24 (610) E: 24 (610)	D: 3 (76) E: 4 (102)	Reference Product Installation Instructions		
Drawer microwave	14 13/16 (376)	20 (508)	16 (406)	D: 24 (610) E: 24 (610)	D: 3 (76) E: 4 (102)	Reference Product Installation Instructions		



**Accessories:** To purchase Bosch accessories, cleaners & parts please visit [www.bosch-home.com/us/store](http://www.bosch-home.com/us/store) or call 1-800-944-2904 (Mon to Fri 5 am to 6 pm PST, Sat 6 am to 3 pm PST).

**Notes:** All height, width and depth dimensions are shown in inches. BSH reserves the absolute and unrestricted right to change product materials and specifications, at any time, without notice. Consult the product's installation instructions for final dimensional data and other details prior to making cutout.

**Warranties:** Please see Use & Care manual or Bosch website for statement of limited warranty.

**For more information on our entire line of products, go to [www.bosch-home.com/us](http://www.bosch-home.com/us) or call 1-800-944-2904**

© BSH Home Appliances Corporation. All rights reserved. Bosch is a registered trademark of Robert Bosch GmbH.

## LG DISHWASHERS

# LDT5552\_

Top Control Dishwasher with Quadwash™

PWY2- 308

**QuadWash™**

**TrueSteam® with Sanitization**

**Dynamic Dry™ Enhanced with TrueSteam®**

**PrintProof™ Finish**

**3rd Rack**

**LoDecibel™ Operation (46 dB)**

**Top Control Panel With LED Display**

**LG ThinQ® Technology**



CAPACITY	
Total Place Settings	15
Upper Rack Dish Height Limit	7.1"
Lower Rack Dish Height Limit	12.5"
RACKS AND BASKETS	
Cutlery Baskets	Yes
Fold Down Tines	Yes (Half Fold on Upper & Half Fold on Lower)
BPA-Free Nylon Coated Racks and Tines	Yes
Rack Handle	Yes (Upper)
EasyRack™ Plus System	Yes
Height Adjustable Upper Rack	Yes
STYLE AND DESIGN	
Control Panel Location	Top Control
Electronic Controls	Fully Integrated Control Panel
Tub Material	NeveRust™ Stainless Steel
Handle	Towel Bar Handle
All Available Colors	PrintProof™ Stainless Steel, PrintProof™ Black Stainless Steel
Fingerprint Resistant	Yes
FEATURES	
TrueSteam™	Yes
QuadWash™	Yes
SenseClean Wash System	Yes
Vario Wash	Yes
Number of Spray Arms	3 (Top, Upper, Lower)
Detergent and Rinse-Aid Dispenser	Yes
Drying System	Dynamic Dry
End of Cycle Indicator	Yes (Beeper + END indication on display)
Hidden Water Heater	Yes
Safety Float Switch (Leaks)	Yes
Soil (Turbidity) Sensor	Yes
DirectDrive Motor™	Yes
LoDecibel Quiet Operation	46 dBA
Tub Insulation	Damping Sheet, Sound Absorbing Material (felt), Base
BPA-Free Nylon Coated Racks and Tines	Yes
Anti-Bacterial Treatment (Sump, Inner / Outer filter, Drain pump case, Drain hose)	Yes
Balanced Door	Yes

SMART FEATURES	
Wifi	Yes
POWER RATINGS	
ENERGY STAR® Qualified	Yes
CEE Tier	1
Energy Use (kWh/Year)	258 kWh/Year
Water Factor (WF)	2.9
DIMENSIONS / CLEARANCES / WEIGHT	
Product Dimensions (in) (W x H x D)	23 3/4" x 33 5/8" x 24 5/8"
Product Weight (lbs)	87.3 lbs
Depth with Door Closed with Handle (in)	24 5/8"
Depth with Door Open (in)	49 1/4"
Carton Dimensions (in) (W x H x D)	28 1/32" x 34 7/8" x 29 5/8"
Shipping Weight with Carton (lbs)	99.4 lbs
LIMITED WARRANTY	
Labor	1 Year
Parts	1 Year
Control Board and Rack Parts	5 Years
Direct Drive Motor	10 Years
Stainless Steel Door Liner or Tub	Lifetime
UPC CODES	
LDT5552S (PrintProof™ Stainless Steel)	048231342346
LDT5552D (PrintProof™ Black Stainless Steel)	048231342568

## LG LAUNDRY

PWY2- 308

# WM4500HBA

5.0 cu.ft. Front Load Washer with TurboWash™ 360°  
and Built-In Intelligence

5.0 cu. ft. Mega Capacity  
 TurboWash™ 360° Technology  
 AI Fabric Sensor/ Smart Pairing™  
 ezDispense™ Automatic Dispenser  
 AAFA Certified LG washer  
 LG ThinQ® Technology / Proactive Customer Care  
 ColdWash™ Technology  
 Direct Drive Motor 10-Year Limited Warranty  
 ENERGY STAR® Certified  
 Closet Depth  
 NeveRust™ Stainless Steel Tub and Lifters

AVAILABLE COLORS



BLACK STEEL



## Enjoy new ways to control your home with LG smart appliances

- Use the ThinQ® app to start the laundry while you're out
- Get alerts when the cycle is finished
- With Smart Pairing™, the washer can tell the dryer to select a compatible drying cycle

**LG ThinQ®**


SUMMARY		No. of Spin Speeds		MATERIALS AND FINISHES	
Type	Front Load Washer	Spin Speeds	Extra High, High, Medium, Low, No Spin	NeveRust™ Stainless Steel Drum	Yes
Capacity (cu.ft.)	5.0 cu. ft.	Max RPM	1300	Cabinet	PCM
Matching Electric Dryer	DLEX4500B	Water Levels	Load Sensing	Control Panel	Plastic
Matching Gas Dryer	DLGX4501B	No. of Soil Levels	5	Top Plate	Painted
Color	Black Steel (B)	FABRIC CARE FEATURES		Door / Rim	Glass/Chrome
APPEARANCE		AI DD™	Yes	Door Cover	Dark Black Tinted Square Cover
Hard Buttons	Yes	TurboWash™ 360 Technology	Yes	All Available Colors	Black Steel (B)
Touch Buttons	Yes	Steam Technology	Yes	CERTIFICATION	
Dial-A-Cycle™	Yes	Allergiene™ Cycle	Yes	AAFA	Yes
ENERGY		Sanitary Cycle	Yes	POWER SOURCE	
ENERGY STAR® Most Efficient 2019	Yes	ColdWash™ Option	Yes	Ratings	UL Listed
ENERGY STAR® Qualified	Yes	SenseClean™ System	Yes	Electrical Requirements	120V, 10 Amps
CEE Tier	Advanced	CONVENIENCE FEATURES		Type	Electric
IMEF	3.1	TrueBalance™ Anti-Vibration System	Yes	OPTIONS/ACCESSORIES	
IWF	2.9	4 Tray Dispenser	ezDispense cartridge(Detergent, Softener), Main Wash, Bleach(cup)	Pedestal	WDP4B
WASH PROGRAMS		LoDecibel™ Quiet Operation	Yes	Pedestal (WxHxD)	27 x 14 1/8 x 30 3/4 (50 9/16 D with door open)
No. of Programs	14	End of Cycle Signal	Yes	LG Sidekick™ Pedestal Washer	WD100CB
Wash Programs	Normal, Heavy Duty, Bedding, Sanitary, Allergiene™, Bright White, Tub Clean, Delicates, Perm, Press, Sportswear, Towels, Speed Wash, Rinse+Spin, Downloaded	LoadSense	Yes	LG Sidekick™ Pedestal Washer (WxHxD)	27 x 14 1/8 x 30 3/4 (50 9/16 D with door open)
WASH OPTIONS		Child Lock	Yes	Stacking Kit	KSTK1
No. of Options	15	Auto Suds Removal	Yes	DIMENSIONS	
Options	TurboWash®, Steam, Fresh Care, Pre-wash, Remote Start, Delay Wash, Wi-Fi, Add Item, Extra Rinse, Control Lock, Drum Light, ColdWash, Spin Only, Detergent Level, Softener Level	Leveling Legs	4 Adjustable Legs	Product (WxHxD)	27" x 39" x 33 1/4"
WASH DETAILS		Easy Loading TilTub™	Yes	Depth with Door Open	(53 1/4" D with door open)
No. of Wash/Rinse Temps	5	ThinQ® TECHNOLOGY		Carton (WxHxD)	29 23/32" x 43 4/32" x 33 28/32"
Wash/Rinse Temps	Extra Hot, Hot, Warm, Cold, Tap Cold	SmartDiagnosis™ (v3.0)	Yes	Weight (Product/Carton)	201.5 / 215.2 lbs
		Wi-Fi	Yes	LIMITED WARRANTY	
		Remote Start and Cycle Monitor	Yes	Parts and Labor	1 Year
		Energy Monitoring	Yes	Direct Drive Motor	10 Years
		MOTOR AND AGITATOR		Drum	3 Years
		Motor Type	Inverter Direct Drive Motor	UPC CODES	
		Axis	Horizontal	WM4500HBA (Black Steel)	048231026772



## LG LAUNDRY

**DLEX4500B**

7.4 cu.ft. Capacity Electric Dryer

**TurboSteam™ Technology**  
**SmartThinQ® Technology (Wi-Fi Enabled)**  
**Sensor Dry System**  
**ENERGY STAR® Qualified**  
**SmartDiagnosis™**  
**Touch Control Panel**  
**AI Dry**  
**FlowSense™ Duct Clogging Indicator**



PWY2- 308



SmartThinQ®

Enjoy new ways to control your home with LG smart appliances

CAPACITY	
Capacity (cu.ft.)	7.4
APPEARANCE	
Design Look	Front Control
Intelligent Electronic Controls with LED Display	•
Touch Buttons	•
Dial-A-Cycle™	•
ENERGY	
ENERGY STAR® Qualified	•
DRYING PROGRAMS	
No. of Programs - 14	Normal, Heavy Duty, Bedding, Small Load, Anti Bacterial, SteamSanitary™, SteamFresh™, Perm Press, Delicates, Sportswear, Towels, Speed Dry (Manual Dry), Air Dry (Manual Dry), Downloaded
No. of Options - 11	More Time, Less Time, Damp Dry Signal, Wrinkle Care, Control Lock, Wi-Fi, Energy Saver, TurboSteam™, Reduce Static, Remote Start, Drum Light
Temperature Settings	High, Mid High, Medium, Low, Ultra Low
Drying Levels	Very, More, Normal, Less, Damp
Manual Dry Times	60 min, 50 min, 40 min, 30 min, 20 min, More Time/Less Time
FABRIC CARE FEATURES	
AI Dry	•
Sensor Dry	•
TurboSteam™	•
Precise Temperature Control and Variable Heater	•
CONVENIENCE FEATURES	
3 Minute Installation Check	•
LoDecibel™ Quiet Operation	•
End of Cycle Signal	•
Drum Light	•
Reversible Door	•
FlowSense™ Duct Clogging Indicator	•
Wrinkle Care Option	•
Child Lock	•
Venting Option	4 Way Venting
4 Leveling Legs	•
Remaining Time Display/Status Indicator(s)	•

**ThinQ® TECHNOLOGY**

SmartDiagnosis™ (v3.0)	•
Wi-Fi	•
Remote Start and Cycle Monitor	•
Energy Monitoring	•

**MATERIALS AND FINISHES**

Aluminized Alloy Steel Drum	•
Cabinet	Painted Steel
Control Panel	Plastic
Door / Rim	Glass/Chrome (with Dark Black Tinted Square Cover)
All Available Colours	Black Steel (B)

**POWER SOURCE**

Ratings	CSA Listed
Electrical Requirements	240V, 30Amps
Type	Electric

**OPTIONS**

Pedestal	WDP4B
Pedestal (WxHxD)	27" x 14 1/8" x 28 2/5"
Stacking Kit	KSTK1

**DIMENSIONS**

Product (WxHxD)	27" x 38 11/16" x 29 3/4" 51" (With door open)
Carton (WxHxD)	29 1/2" x 42 1/4" x 31 1/4"
Weight (Product/Carton)	136 lbs/155 lbs

**LIMITED WARRANTY**

1 Year Parts and Labour, 10 Years on Drum

**UPC CODES**

WVM4500HBA	048231026772
DLEX4500B	772454073052
WDP4B	048231026451
KSTK1	772454059896