

# Exhibit 6032 IFS

PWY2- 316- Main Bath

**Model number:**

105520

**Dimensions:** 60" x 32" x 18"

**Installation:** Alcove

**Material:** Acrylic



## Standard Features:

- Rectangular shape bathtub in alcove installation
- Available in Above-the-Floor Rough (AFR) or not
- Minimalist look with discreet armrests and textured floor
- Integrated tiling flange
- Integrated skirt with access panel when equipped with a system

## Product characteristics:

- Made in North America
- Elegant design
- Integrated Tiling Flange and Skirt

## Systems:

- Whirlpool
- Combined Whirlpool/Aeroeffect
- Aeroeffect

## Warranty:

25 Years

## Standard colors:



White (001)



Bone (004)



Biscuit (007)

## Certifications

MAAX products adhere to one or more of the following certifications:



## Recommended products (Visit our website for a complete list of our recommended doors)

No	Description
139398	Halo Sliding Tub Door 56 ½-59 x 59 in. 8 mm
135330	Incognito 57 Shaker Sliding Tub Door 56-59 x 56 ¾ in. 8 mm
139351	Incognito 57 Sliding Tub Door 56-59 x 56 ¾ in. 6 mm

## Options (Visit our website for a complete list of our options)

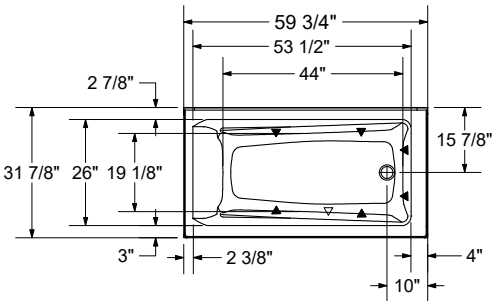
No	Description
<input type="checkbox"/> OPT 10019	Removable access panel
<input type="checkbox"/> OPT 10053	Chromatherapy
<input type="checkbox"/> OPT 10095	Water heater assembly
<input type="checkbox"/> OPT 10106	Metal trim kit for whirlpool and combined systems
<input type="checkbox"/> OPT 20029	Metal trim kit for Air Push Control

Exhibit 6032 IFS

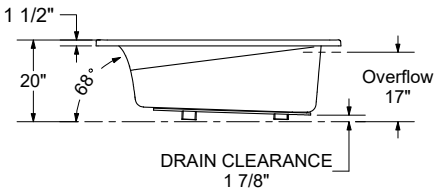
PWY2- 316- Main Bath

Model number:	105520
---------------	--------

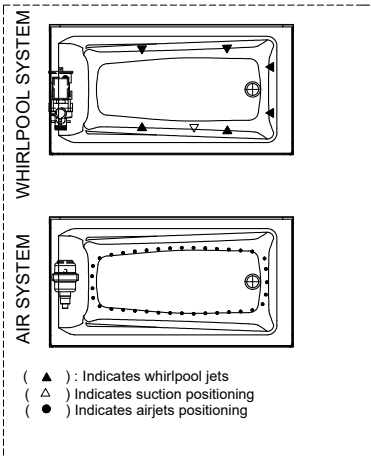
Dimensions:	60" x 32" x 18"	Installation:	Alcove	Material:	Acrylic
-------------	-----------------	---------------	--------	-----------	---------



1" Single Integrated tiling flange (shown)  
2" Double Integrated tiling flange (not shown)  
Drop-in model (Shown)



Wood support design may vary.  
Single Integrated tiling flange: 1" height x 1/4" thickness (shown)  
Double Integrated tiling flange: 2" height (not shown)  
All dimensions are approximate.  
Structure measurement must be verified against the unit to ensure proper fit.



Dimensions:
59 3/4 x 32 x 17 3/4 in. (1518 x 813 x 451 mm)
Water capacity:
46 gallons - 173 liters
Weight:
78 lbs - 35.37 kg
Bathing well:
53 1/4 X 25 7/8 in. (1353 X 657 mm)
Deep sump height:
16 1/4 in. - 413 mm
Deck width:
4 1/8 in. - 105 mm
Drain location:
Left
Right

Project:	
Contractor:	
Representative:	
Date:	
Tel:	
Notes:	



## Fireplace Design Studio

Ascent™ Linear 46  
( BL46 )



Glass Media Kits  
Topaz Glass Embers

Safety Barrier  
Standard Black

Surround  
Classic Black