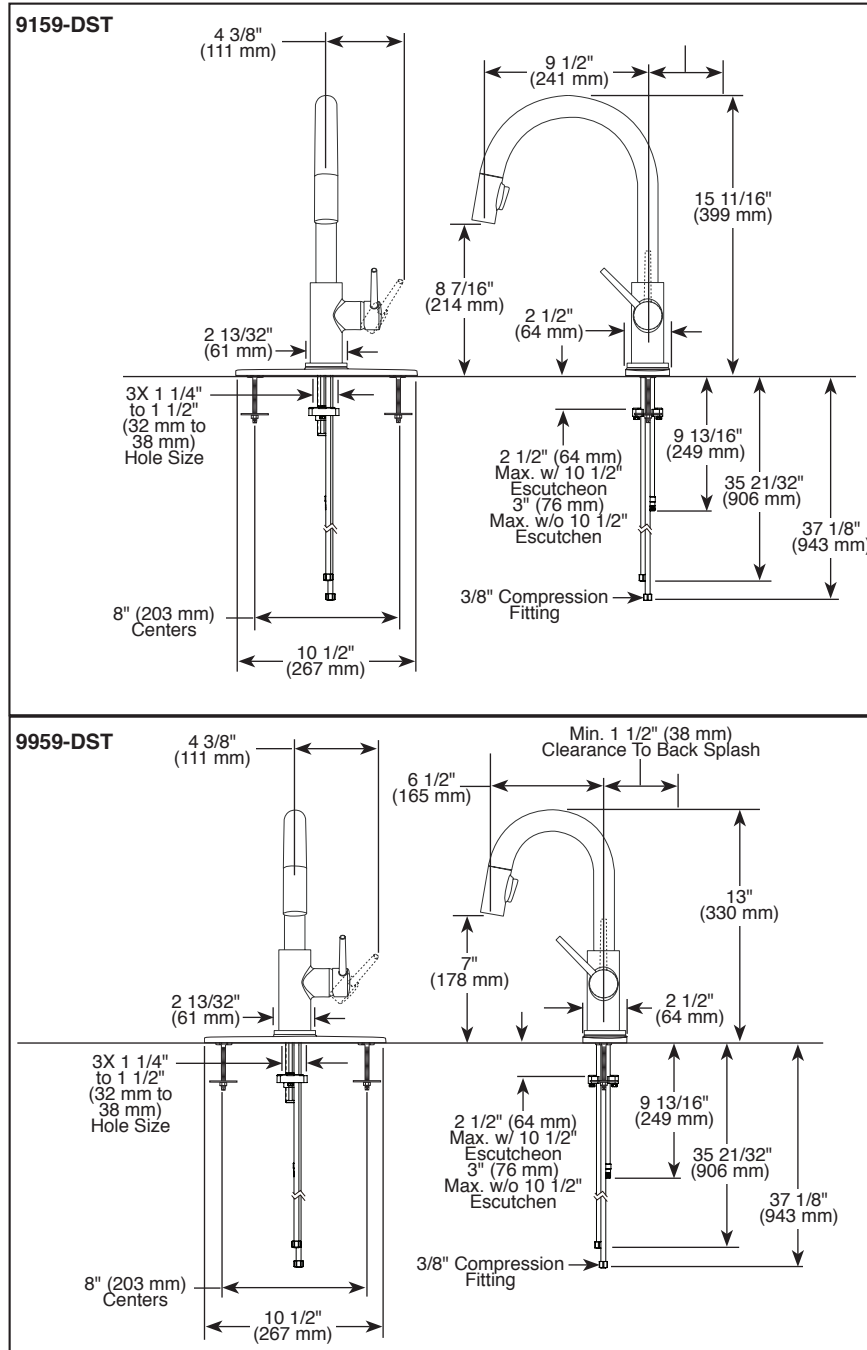


Submitted Model No.: _____

Specific Features: _____



▲ Designate proper finish suffix

Delta reserves the right (1) to make changes in specifications and materials, and (2) to change or discontinue models, both without notice or obligation. Dimensions are for reference only. See current full-line price book or www.deltafaucet.com for finish options and product availability.

DSP-K-9159-DST Rev. F

see what Delta can doSM

KITCHEN FAUCETS

- Trinsic® Collection
- Single Handle Deck Mount
- 2-Function Pull-Down Sprayer

FEATURES:

- MagnaTite® Magnetic System
- DIAMOND Seal® Technology
- Touch-Clean® Sprayhead

STANDARD SPECIFICATIONS:

- Maximum 1.8 gpm @ 60 psi, 6.8 L/min @ 414 kPa
- One or three hole mount (escutcheon optional, not included)
- Spout rotates 360°
- Control mechanism shall be full-motion valve cartridge
- Two-function wand; Aerated stream or spray
- Red/blue indicator markings
- Dual integral check valves in sprayer
- Quick connect hoses

WARRANTY

- Parts and Finish - Lifetime limited warranty; or for commercial purchasers, 10 years for multi-family residential (apartments and condominiums) and 5 years for all other commercial uses, in each case from the date of purchase.
- Electronic Parts and Batteries (if applicable) - 5 years from the date of purchase; or for commercial purchasers, 1 year from the date of purchase. No warranty is provided on batteries.

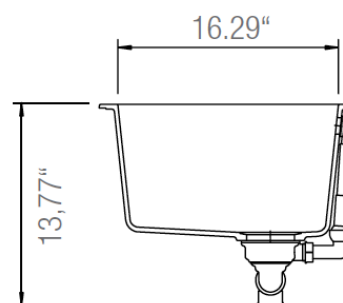
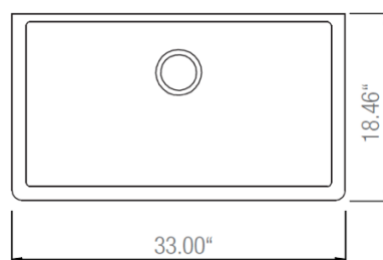
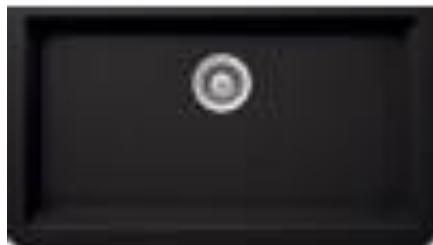
COMPLIES WITH:

- ASME A112.18.1 / CSA B125.1
- ASME A112.18.6
- Indicates compliance to ICC/ANSI A117.1
- Verified compliant with .25% weighted average Pb content regulations.



Delta Faucet Company

55 E. 111th Street, Indianapolis, IN 46280
 350 South Edgeware Road, St. Thomas, ON N5P 4L1
 © 2019 Delta Faucet Company

Product Specification Sheet
Virtuo Granite Undermount Single Sink
B317 - B318 - B319 - B329 - B336
**Colour Finish**

Pearl Back

Coffee Brown

Slate Grey

Asphalt

Stone Taupe

Model No.

B317

B318

B319

B329

B336

Description

- 33" x 18-1/2" x 9-1/4" Deep
- 80% Quartz Content
- 3 1/2" drain opening
- Supplied with installation clips, template & strainers
- CUPC certified

Available accessories

- Matching Strainer
- Drying Rack
- BG317/318/319/329/336 - Stainless Steel Grid

MAIN LOCATION

BRISTOL SINKS
 56 Firestone Blvd
 London, Ontario
 N5W 6E6

WESTERN LOCATION

BRISTOL SINKS
 964 72nd Avenue NE
 Calgary, Alberta
 T2E 8V9

**CONTACT**

Tel: 1 (800) 930-0214
 Fax: 1 (866) 310-7580
 Email: sales@bristolsinks.com



SC(B)322 | PRO Collection

Cyclone[®]
Breathe Better



24" Width Model



Mesh Filter



Baffle Filter

Wall Mount

Designed with an emphasis on the beauty of simplicity, the straightforward design of this model blends seamlessly with a modern kitchen environment. Features 300 CFM of drawing power, two LED lights at the front of the machine, and fitted with a time-delay OFF feature up to nine minutes.

Green Features



3 Speed Push Button
Control Panel



Long-Lasting
LED Lights



Time-Delay
OFF Feature



Grease Cup



Note: shown integrated into cabinet.

Model	Colour	Ducting	Filters	Size	CFM
SC32224	Stainless Steel	6"	Mesh	24"	300
SC32230	Stainless Steel	6"	Mesh	30"	300
SC32236	Stainless Steel	6"	Mesh	36"	300
SCB32224	Stainless Steel	6"	Baffle	24"	300
SCB32230	Stainless Steel	6"	Baffle	30"	300
SCB32236	Stainless Steel	6"	Baffle	36"	300

Cyclone Range Hoods Inc.

1361 Huntingwood Drive, Unit 16, Toronto, ON, M1S 3J1, Canada.

Toll Free: 1-888-293-5662 Tel: (416) 293-0933 Fax: (416) 293-4793 Website: www.CycloneRangeHoods.com

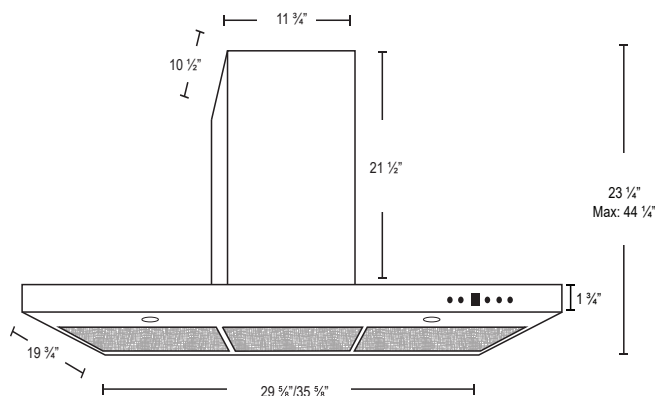
SC(B)322 | PRO Collection

Cyclone[®]
Breathe Better

Features

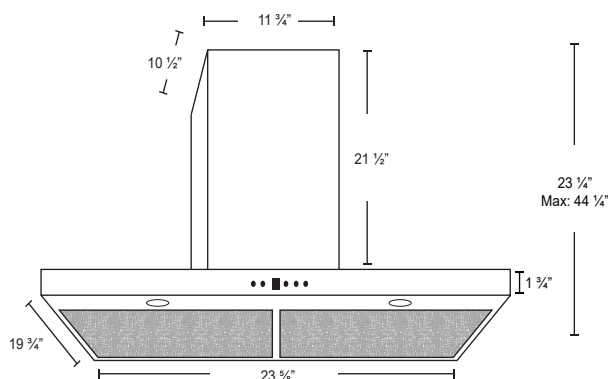
- Wall mount range hood
- 6" round duct adapter
- Non-stick aluminum fan blades
- 3 speed push button control
- 2 LED lights (2 x 1.4W, 4000K)
- Quick release aluminum mesh filters
- Standard chimney fits up to 9 ft. ceiling
- Up to 9 minutes time-delay OFF feature
- Plug-in connection

SC(B)32230
SC(B)32236



FRONT

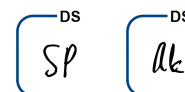
SC(B)32224



FRONT

Options

- Filters:
 - SC322 - Quick Release Aluminum Mesh Filters
 - SCB322 - Quick Release Stainless Steel Baffle Filters
- Chimney Flues:
 - B2.CH16 - short (7'-8' ceilings)
 - B2.CH22 - standard (8'-9' ceilings)
 - B2.CH32 - extended (9'-11' ceilings)
- Widths: 24", 30", 36"



Specifications

- | | | |
|--|--|--|
| <ul style="list-style-type: none"> ▪ Air Flow Volume: 300 CFM ▪ Electrical Connection: 120 V/60 Hz ▪ Power Consumption: 300 Watts | <ul style="list-style-type: none"> ▪ Current: 2.5 Amps ▪ Fan Speed: 1350 RPM ▪ Fan Type: Centrifugal Blower | <ul style="list-style-type: none"> ▪ Finishes: Stainless Steel ▪ Ducting: 6" Round ▪ Noise Level: Min. 2 Sones
Max. 4 Sones |
|--|--|--|



Toronto • Vancouver • Boston

www.CycloneRangeHoods.com