

CONSTRUCTION NOTES

PLANS TO BE READ WITH MASTER FOOTPRINT PLANS

ALL CONSTRUCTION TO ADHERE TO THESE PLANS AND SPEC'S AND TO CONFORM TO THE ONTARIO BUILDING CODE AND ALL OTHER APPLICABLE CODES AND AUTHORITIES HAVING JURISDICTION. THESE REQUIREMENTS ARE TO BE TAKEN AS MINIMUM SPECIFICATIONS. ONT. REG. 332/12

1. ROOF CONSTRUCTION  
NO.210 (10.25kg/m2) ASPHALT SHINGLES, 11.1mm (7/16") ASPENITE SHEATHING WITH "H" CLIPS. APPROVED WOOD TRUSSES @ 600mm (24") O.C. MAX. APPROVED EAVES PROTECTION TO EXTEND 900mm (3'-0") FROM EDGE OF ROOF AND MIN. 300mm (12") BEYOND INNER FACE OF EXTERIOR WALL. (EAVES PROTECTION NOT REQ'D. FOR ROOF 8:12 OR GREATER) 38x89 (2"x4") TRUSS BRACING @ 1830mm (6'-0") O.C. AT BOTTOM CHORD. PREFIN. ALUM. EAVESTROUGH, FASCIA, RWL & VENTED SOFFIT. ATTIC VENTILATION 1:300 OF INSULATED CEILING AREA WITH 25% AT EAVES. AND 25% AT RIDGE (OBC 9.19.1.2)

2. FRAME WALL CONSTRUCTION (2"x6")  
SIDING AS PER ELEVATION, APPROVED AIR BARRIER 11.1mm (7/16") EXTERIOR TYPE SHEATHING, 38x140 (2"x6") STUDS @ 400mm (16") O.C., RSI 3.87 (R22) INSULATION AND APPROVED VAPOUR BARRIER AND APPROVED CONT. AIR BARRIER, 13mm (1/2") INT. DRYWALL FINISH. SIDING TO BE MIN. 200mm (8") ABOVE FIN. GRADE

2A. FRAME WALL CONSTRUCTION (2"x4")  
SIDING AS PER ELEVATION, APPROVED AIR BARRIER RSI 0.9 (R5) EXTERIOR RIGID INSULATION BOARD 38x89 (2"x4") STUDS @ 400mm (16") O.C., WITH APPROVED DIAGONAL WALL BRACING, RSI 3.35 (R19) INSULATION AND APPROVED VAPOUR BARRIER AND APPROVED CONT. AIR BARRIER, 13mm (1/2") INT. DRYWALL FINISH. SIDING TO BE MIN. 200mm (8") ABOVE FIN. GRADE

3. BRICK VENEER CONSTRUCTION (2"x6")  
90mm (4") FACE BRICK 25mm (1") AIR SPACE, 22x180x0.76mm (7/8"x7"x0.03") GALV. METAL TIES @ 400mm (16") O.C. HORIZONTAL 600mm (24") O.C. VERTICAL. APPROVED AIR BARRIER 11.1mm (7/16") EXTERIOR TYPE SHEATHING, 38x140 (2"x6") STUDS @ 400mm (16") O.C., RSI 3.87 (R22) INSULATION AND APPROVED VAPOUR BARRIER WITH APPROVED CONTIN. AIR BARRIER. 13mm (1/2") INT. DRYWALL FINISH. PROVIDE WEEP HOLES @ 800mm (32") O.C. BOTTOM COURSE AND OVER OPENINGS. PROVIDE THRU-WALL FLASHING UP MIN. 150mm (6") BEHIND BUILDING PAPER. BRICK TO BE MIN. 150mm (6") ABOVE FINISH GRADE.

3A. BRICK VENEER CONSTRUCTION (2"x4") 90mm (4") FACE BRICK 25mm (1") AIR SPACE, 22x180x0.76mm (7/8"x7"x0.03") GALV. METAL TIES @ 400mm (16") O.C. HORIZONTAL 600mm (24") O.C. VERTICAL. APPROVED AIR BARRIER RSI 0.9 (R5) EXT. RIGID INSUL. BD., 38x89 (2"x4") STUDS @ 400mm (16") O.C. WITH APPROVED DIAGONAL WALL BRACING, RSI 3.35(R19) INSULATION AND APPROVED VAPOUR BARRIER WITH APPROVED CONT. AIR BARRIER, 13mm (1/2") INT. DRYWALL FINISH. PROVIDE WEEP HOLES @ 800mm (32") O.C. BOTTOM COURSE AND OVER OPENINGS. PROVIDE THRU-WALL FLASHING UP MIN. 150mm (6") BEHIND BUILDING PAPER. BRICK TO BE MIN. 150MM(6") ABOVE FINISH GRADE.

4. INTERIOR STUD PARTITIONS FOR BEARING PARTITIONS 38x89 (2"x4") @ 400mm (16") O.C. FOR 2 STOREYS AND 300mm (12") O.C. FOR 3 STOREYS, NON-BEARING PARTITIONS 38x89 (2"x4") @ 600mm (24") O.C. PROVIDE 38x89 (2"x4") BOTTOM PLATE AND 2/38x89 (2/2"x4") TOP PLATE. 13mm (1/2") INT. DRYWALL BOTH SIDES OF STUDS, PROVIDE 38x140 (2"x6") STUDS/PLATES WHERE NOTED.

5. FOUNDATION WALL/FOOTINGS: -SEE OBC 9.15.3, 9.15.4 200mm (8") POURED CONC. FDTN. WALL 20MPa (c/w 2-15M REBAR TOP & BOTTOM) WITH BITUMENOUS DAMPPROOFING AND OPT. DRAINAGE LAYER. DRAINAGE LAYER REQ. WHEN BASEMENT INSUL. EXTENDS 900 (2'-11") BELOW FIN. GRADE. MAXIMUM POUR HEIGHT 2390 (7'-10") ON 500x155 (20"x6") CONTINUOUS KEYED CONC. FTG. BRACE FDTN. WALL PRIOR TO BACKFILLING. ALL FOOTINGS SHALL REST ON NATURAL UNDISTURBED SOIL OR COMPACTED ENGINEERED FILL, WITH MIN. BEARING CAPACITY OF 100kPa OR GREATER. IF SOIL BEARING DOES NOT MEET MIN. CAPACITY, ENGINEERED FOOTINGS ARE REQUIRED. MAX. FLOOR LIVE LOAD OF 2.4kpa(50psf) PER FLOOR, AND MAX. LENGTH OF SUPPORTED JOISTS IS 4.9m (16'-1"). REFER TO SOILS REPORT FOR SOILS CONDITIONS AND BEARING CAPACITY.

6. 100mm (4") DIA. WEEP TILE 150mm (6") CRUSHED STONE OVER AND AROUND WEEPING TILES.

7. BASEMENT SLAB OBC. 9.3.1.6.(1)(b) & 9.16.4.5.(1) 80mm (3")MIN. 25MPa (3600psi) CONC. SLAB ON 100mm (4") COARSE GRANULAR FILL, OR 15MPa. (2200psi) CONC. WITH DAMPPROOFING BELOW SLAB.

8. EXPOSED FLOOR TO EXTERIOR PROVIDE RSI 5.46 (R31) INSULATION, APPROVED VAPOUR BARRIER AND CONTINUOUS AIR BARRIER, FINISHED SOFFIT.

9. OBC. 12.3.2.1 & 12.3.3.7 ATTIC INSULATION RSI 8.81 (R60) BLOWN IN ROOF INSULATION AND APPROVED VAPOUR BARRIER, 13mm (1/2") INT. DRYWALL FINISH OR APPROVED EQUAL

10. STAIRS, STEPS, HANDRAILS -OBC. 9.8.-  
-9.8.2.1(1) STAIR WIDTH MEASURED BETWEEN WALL FACES OR GUARDS SHALL BE NOT LESS THAN 900mm (35 1/8")  
-9.8.2.2(3) CLEAR HEIGHT OVER STAIRS SHALL NOT BE LESS THAN 1950mm (76 3/4")  
-9.8.4 STEP DIMENSIONS (TABLE 9.8.4.1)  
STAIR COMPONENT MINIMUM MAXIMUM  
RISE 125mm (4 1/8") 200mm (7 7/8")  
RUN 255mm (10 1/8") 355mm (14")  
-9.8.4.4 UNIFORMITY & TOLERANCES FOR RISERS & TREADS  
-BETWEEN ADJACENT TREADS & LANDINGS = 5mm  
-BETWEEN TALLEST & SHORTEST RISER IN FLIGHT=10mm  
-9.8.4.6(1)(b) MAX. NOSING 25mm (1")  
-9.8.7.5(1)(b) CLEARANCE BETWEEN HANDRAIL AND SURFACE BEHIND IT TO BE MIN. 50mm (1 1/8")  
-9.8.7.6(1) HANDRAILS SHALL NOT PROJECT MORE THAN 100mm (3 1/8") INTO REQUIRED WIDTH OF STAIR <SEE 9.8.2.1(1)>

11. GUARDS -OBC. 9.8.8.3.-  
(1) EXT. GUARDS HEIGHT: =1070mm (42 5/8") MIN.  
(2) INT. GUARDS HEIGHT: =900mm (35 1/8") MIN.  
(1) STAIR LANDING GUARDS: =1070mm (42 5/8") MIN.  
-9.8.8.5(1) MAX. OPENINGS THROUGH GUARDS =100mm (3 1/8")

12. 38x89 (2"x4") SILL PLATE WITH 13mm (1/2") DIA. ANCHOR BOLTS 200mm (8") LONG, EMBEDDED MIN. 100mm (4") INTO CONC. @ 2400mm (7'-10") O.C. USE NON-SHRINK GROUT TO LEVEL SILL PLATE WHEN REQUIRED. (SEE OBC. 9.23.7)

13. -R12 (3/4") CONTINUOUS BATT INSULATION. 2"x4" STUD WALL PLACED 3/4" AWAY FROM WALL. FILL STUD CAVITY WITH R10 BATT INSULATION. APPROVED VB TO 8" ABOVE FLOOR LEVEL.  
OR  
-APPROVED BLANKET INSULATION (R20) MECHANICALLY SECURED TO CONCRETE FOUNDATION WALL WITH 100mm HILTI PINS (COMES WITH PLASTIC WASHER)

DAMPPROOF WITH BUILDING PAPER BETWEEN THE FOUNDATION WALL AND INSULATION UP TO GRADE LEVEL.

(SEE DETAIL ON "SB-12 DETAILS" PAGE)

14. BEARING STUD PARTITION  
38x89 (2"x4") STUDS @ 400mm (16") O.C. 38x89 (2"x4") SILL PLATE ON DAMPPROOFING MATERIAL, 13mm (1/2") DIA. ANCHOR BOLTS 200mm (8") LONG, EMBEDDED MIN. 100mm (4") INTO CONC. @ 2400mm (7'-10") O.C. 100mm (4") HIGH CONC. CURB ON 350x155 (14"x6") CONC. FOOTING. ADD HORIZ. BLOCKING AT MID-HEIGHT IF WALL IS UNFINISHED.

15. STEEL BASEMENT COLUMN (SEE O.B.C. 9.17.3.1, 9.17.3.4)  
75mm (3") DIA. ADJUSTABLE STL. COL. CONFORMING TO CAN/CGSB-7.2M, AND WITH 150x150x9.5 (6"x6"x3/8") STL. PLATE TOP & BOTTOM. 910x910x300 (36"x36"x12") CONC. FOOTING ON UNDISTURBED SOIL OR ENGINEERED FILL CAPABLE OF SUSTAINING A PRESSURE OF 100 Kpa. MINIMUM AND AS PER SOILS REPORT.

15A. STEEL BASEMENT COLUMN (SEE O.B.C. 9.17.3.1, 9.17.3.4)  
3"x3"x(.188) NON-ADJUSTABLE STL. COL. WITH 150x150x9.5 (6"x6"x3/8") STL. TOP & BOTTOM PLATE ON 910x910x300 (36"x36"x12"). CONC. FOOTING ON UNDISTURBED SOIL OR ENGINEERED FILL CAPABLE OF SUSTAINING A PRESSURE OF 100 Kpa. MIN. AND AS PER SOILS REPORT.

15B. STEEL COLUMN (SEE OBC. 9.17.3.1, 9.17.3.4) 3"x3"x(.188) NON-ADJUSTABLE STL. COL. TO BE ON 150x150x9.5 (6"x6"x3/8") STEEL TOP PLATE, & BOTTOM PLATE. BASE PLATE 120x250x12.5 (4 1/2"x10"x1/2") WITH 2-12mm DIA. x 300mm LONG x50mm HOOK ANCHORS (2-1/2"x12"x2") FIELD WELD COL. TO BASE PLATE.

15C. STEEL COLUMN (SEE OBC. 9.17.3.1, 9.17.3.4) 90mm(3-1/2") DIA.x4.78mm(.188) NON-ADJUSTABLE STL. COL. TO BE ON 150x150x9.5 (6"x6"x3/8") STEEL TOP PLATE, & BOTTOM PLATE. BASE PLATE 120x250x12.5 (4 1/2"x10"x1/2") WITH 2-12mm DIA. x 300mm LONG x50mm HOOK ANCHORS (2-1/2"x12"x2") FIELD WELD COL. TO BASE PLATE.

16. BEAM POCKET OR 300x150 (12"x6") POURED CONC. NIB WALLS. MIN. BEARING 90mm (3-1/2")

17. 19x64 (1"x3") CONTINUOUS WD. STRAPPING BOTH SIDES OF STEEL BEAM.

18. GARAGE SLAB: 100mm (4") 32MPa (4640psi) CONC. SLAB WITH 5-8% AIR ENTRAINMENT ON OPT. 100 (4") COARSE GRANULAR FILL WITH COMPACTED SUB-BASE OR COMPACTED NATIVE FILL SLOPE TO FRONT AT 1% MIN.

19. 13mm (1/2") GYPSUM BD. ON WALL AND CEILING BETWEEN HOUSE AND GARAGE, RSI 3.87 (R22) IN WALLS, RSI 5.46 (R31) IN CEILING. PROVIDE APPROVED AIR BARRIER. TAPE AND SEAL ALL JOINTS AIR TIGHT.

20. DOOR AND FRAME GASPROOFED. DOOR EQUIPPED WITH SELF CLOSING DEVICE AND WEATHERSTRIPPING. PER OBC 9.10.13.15  
21. WOOD STEP, C/W HANDRAIL & LANDING IF MORE THAN 3 RISERS, MAX.RISE 200mm (7-7/8") MIN.TREAD 250mm (9-1/2") SEE OBC 9.8.9.2, 9.8.9.3 & 9.8.10

22. CAPPED DRYER EXHAUST VENTED TO EXTERIOR. (USE 100mm(4") DIA. SMOOTH WALL VENT PIPE) OBC 6.2.3.8.(7)

23. ATTIC ACCESS HATCH 545x610 (21.5"x24") WITH A MIN. AREA OF 3.44 SF WITH WEATHERSTRIPPING RSI 7.0 (R40) RIGID INSUL. BACKING OBC 9.19.2

24. FIREPLACE CHIMNEYS -OBC. 9.21.- TOP OF FIREPLACE CHIMNEY SHALL BE 915mm (3'-0") ABOVE THE HIGHEST POINT AT WHICH IT COMES IN CONTACT WITH THE ROOF AND 610mm (2'-0") ABOVE THE ROOF SURFACE WITHIN A HORIZ. DISTANCE OF 3050mm (10'-0") FROM THE CHIMNEY.

25. LINEN CLOSET, 4 SHELVES MIN. 350mm (14") DEEP.

26. MECHANICAL EXHAUST FAN, VENTED TO EXTERIOR, TO PROVIDE AT LEAST ONE AIR CHANGE PER HOUR.

27. STEEL BEARING PLATE FOR MASONRY WALLS 280x280x16 (11"x11"x5/8") STL. PLATE FOR STL BEAMS AND 280x280x12 (11"x11"x1/2") STL. PLATE FOR WOOD BEAMS BEARING ON CONC. BLOCK PARTYWALL, ANCHORED WITH 2-19mm (3/4") x 200mm (8") LONG GALV. ANCHORS WITHIN SOLID BLOCK COURSE. LEVEL WITH NON-SHRINK GROUT.

OR

SOLID WOOD BEARING FOR WOOD STUD WALLS SOLID BEARING TO BE AT LEAST AS WIDE AS THE SUPPORTED MEMBER. SOLID WOOD BEARING COMPRISED OF BUILT-UP WOOD STUDS TO BE CONSTRUCTED IN ACCORDANCE WITH OBC. 9.17.4.2 (2).

28. U.L.C. RATED CLASS "B" VENT 610mm (2'-0") ABOVE THE POINT IN CONTACT WITH THE ROOF FOR SLOPES UP TO 9/12, REFER TO THE ONTARIO GAS UTILIZATION CODE.

29. 3-38x140 (3-2"x6") BUILT-UP-POST ON METAL BASE SHOE ANCHORED TO CONC. WITH 12.7 DIA. BOLT. 610x610x254 (24"x24")

30. STEP FOR MAX. VEF n (23-5/8"). FIRM SOILS.

31. PORCH SLAB 32 MPa SLAB 10 M BARS @ 250 O/C THICKENED ) O.C. 2-15m IN DES (SEE DETAIL)

32. DIRECT VENT GAS REG (36") FROM A IN. GRADE, FROM HRV INTAKE TO BE ALL OPENED TO BE JUST TERMINALS. A MIN. C REFER TO GAS UTILIZATION CODE.

33. DIRECT VENT GAS FIREPLACE. VENT TO BE A MINIMUM 300mm (12") FROM ANY OPENING AND ABOVE FIN. GRADE. REFER TO GAS UTILIZATION CODE.

34. SUBFLOOR, JOIST STRAPPING AND BRIDGING -19mm (3/4") T & G SUBFLOOR ON WOOD FLOOR JOISTS. FOR CERAMIC TILE APPLICATION (\* SEE OBC 9.30.6.1 \*) 6mm (1/4") PANEL TYPE UNDERLAY UNDER RESILIENT & PARQUET FLOORING. (-\* SEE OBC 9.30.2 \*) ALL JOISTS TO BE BRIDGED WITH 38x38 (2"x2") CROSS BRACING OR SOLID BLOCKING @ 2100mm (6'-11") O.C. MAX. ALL JOISTS TO BE STRAPPED WITH 19x64 (1"x3") @ 2100mm (6'-11") O.C. UNLESS A PANEL TYPE CEILING FINISH IS APPLIED. (SEE OBC 9.23.9.4)

35. EXPOSED BUILDING FACE -OBC. 9.10.14.5- EXTERIOR WALLS TO HAVE A FIRE RESISTANCE RATING OF NOT LESS THAN 45 min. WHERE LIMITING DISTANCE IS LESS THAN 1.2M (3'-11"). WHERE THE LIMITING DISTANCE IS LESS THAN 600mm (1'-11") THE EXPOSING FACE SHALL BE CLAD IN NON-COMBUSTIBLE MATERIAL.

RESERVED

36. THE FDTN. WALL SHALL NOT BE REDUCED TO LESS THAN 90mm (3 5/8") THICK TO A MAX. DEPTH OF 350mm (13 3/4") AND SHALL BE TIED TO THE FACING MATERIAL WITH METAL TIES SPACED 200mm (8") O.C. VERTICALLY AND 900mm (36") O.C. HORIZONTALLY. FILL SPACE BETWEEN WALL AND FACING SOLID WITH MORTAR. (SEE OBC 9.15.4.7)

38. CONVENTIONAL ROOF FRAMING 38x140 (2"x6") RAFTERS @ 400mm (16"O.C.), FOR MAX. 11'-7" SPAN. 38x184 (2"x8") RIDGE BOARD. 38x89 (2"x4") COLLAR TIES AT MIDSPANS. CEILING JOISTS TO BE 38x89 (2"x4") @ 400mm (16") O.C. FOR MAX. 2830mm (9'-3") SPAN & 38x140 (2"x6") @ 400mm (16") O.C. FOR MAX. 4450mm (14'-7") SPAN. RAFTERS FOR BUILT-UP ROOF TO BE 38x89 (2"x4") @ 600mm (24") O.C. WITH A 38x89 (2"x4") CENTRE POST TO THE TRUSS BELOW, Laterally BRACED AT 1800mm (6'-0") O.C. VERTICALLY.

39. TWO STOREY VOLUME SPACES  
FOR HIGH WALL UP TO 18'=0": CONSTRUCTION: 2"x6" SPACING AS INDICATED BLOCKING: 3 ROWS @ 4'-6" O/C ± SHEATHING: 7/16" ASPENITE NAILING: 2" STAPLES BET. 4" AND 6" O/C ALONG STUDS

STUD SPACING WITH VARIOUS FINISHES:  
1. SIDING-METAL OR VINYL- 2"x6" @12" O/C  
2. STUCCO -2"x6" @16" O/C  
3. BRICK TO 4'-0" -2"x6" @16" O/C  
4. BRICK FULL HEIGHT -2-2"x6" @12" O/C

40. TYPICAL 1 HOUR RATED PARTYWALL. REFER TO DETAILS FOR TYPE AND SPECIFICATIONS.

WINDOWS:

1. MINIMUM BEDROOM WINDOW -OBC. 9.9.10. AT LEAST ONE BEDROOM WINDOW ON A GIVEN FLOOR IS TO HAVE MIN. 0.35m2 UNOBSTRUCTED GLAZED OR OPENABLE AREA WITH MIN. CLEAR WIDTH OF 380 mm (1'-3").
2. WINDOW GUARDS -OBC. 9.8.8.1. A GUARD IS REQUIRED WHERE THE TOP OF THE WINDOW SILL IS LOCATED LESS THAN 480mm (1'-7") ABOVE FIN. FLOOR AND THE DISTANCE FROM THE FIN. FLOOR TO THE ADJACENT GRADE IS GREATER THAN 1800mm (5'-11")
3. ALL WINDOWS TO COMPLY WITH THERMAL RESISTANCE REQUIREMENTS STATED IN OBC 12.3.2.6. AND SB12 PRESCRIPTIVE COMPLIANCE PACKAGE, AND OBC 9.5, 9.6, 9.7

GENERAL

1. MECHANICAL VENTILATION IS REQUIRED TO PROVIDE 0.3 AIR CHANGES PER HOUR AVERAGED OVER 24 HOURS. SEE MECHANICAL DRAWINGS.
2. ALL DOWNSPOUTS TO DRAIN AWAY FROM THE BUILDINGAS PER OBC 9.26.18.2 AND MUN. STANDARDS.
3. ALL WINDOW WELLS TO DRAIN TO FOOTING LEVEL PER OBC 9.14.6.3 CHECK WITH LOCAL AUTHORITY.
4. PROVIDE STUD WALL REINFORCEMENT FOR FUTURE GRAB BARS IN BATHROOMS. REINF. OF STUD WALLS SHALL BE INSTALLED ADJACENT TO WATER CLOSETS AND SHOWER OR BATHTUB IN MAIN BATHROOM, SEE OBC 9.5.2.3., 3.8.3.8.(1)(d) & 3.8.3.13.(1)(f).

LUMBER:

1. ALL LUMBER SHALL BE SPRUCE No.2 GRADE, UNLESS NOTED OTHERWISE.
2. STUDS SHALL BE STUD GRADE SPRUCE, UNLESS NOTED OTHERWISE.
3. LUMBER EXPOSED TO THE EXTERIOR TO BE SPRUCE No.2 GRADE PRESSURE TREATED OR CEDAR, UNLESS NOTED OTHERWISE.
4. ALL LAMINATED VENEER LUMBER (L.V.L.) BEAMS, GIRDER TRUSSES, AND METAL HANGER CONNECTIONS SUPPORTING ROOF FRAMING TO BE DESIGNED & CERTIFIED BY TRUSS MANUF.
5. LVL BEAMS SHALL BE 2.0E WS MICRO-LAM LVL (Fb=2800psi.MIN.) OR EQUIVALENT. NAIL EACH PLY OF LVL WITH 89mm (3 1/2") LONG COMMON WIRE NAILS @ 300mm (12") O.C. STAGGERED IN 2 ROWS FOR 184, 240 & 300mm (7 1/4", 9 1/2", 11 7/8") DEPTHS AND STAGGERED IN 3 ROWS FOR GREATER DEPTHS AND FOR 4 PLY MEMBERS ADD 13mm (1/2") DIA. GALVANIZED BOLTS BOLTED AT MID-DEPTH OF BEAM @ 915mm (3'-0") O.C.
6. PROVIDE TOP MOUNT BEAM HANGERS TYPE "SCL" MANUFACTURED BY MGA CONNECTOR LTD. Tel. (905) 642-3175 OR EQUAL FOR ALL LVL BEAM TO BEAM CONNECTIONS UNLESS OTHERWISE NOTED.
7. JOIST HANGERS: PROVIDE METAL HANGERS FOR ALL JOISTS AND BUILT-UP WOOD MEMBERS INTERSECTING FLUSH BUILT-UP WOOD MEMBERS.
8. WOOD FRAMING NOT TREATED WITH A WOOD PRESERVATIVE, IN CONTACT WITH CONCRETE, SHALL BE SEPARATED FROM THE CONCRETE BY AT LEAST 2 mil. POLYETHYLENE FILM, No. 50 (45lbs.) ROLL ROOFING OR OTHER DAMPPROOFING MATERIAL, EXCEPT WHERE THE WOOD MEMBER IS ST LEAST 150mm (6") ABOVE THE GROUND.

STEEL:

1. STRUCTURAL STEEL SHALL CONFORM TO CAN/CSA-G40-21 GRADE 300W. HOLLOW STRUCTURAL SECTIONS SHALL CONFORM TO CAN/CSA-G40-21 GRADE 350W CLASS "H".
2. REINFORCING STEEL SHALL CONFORM TO CSA-G30-18M GRADE 400R.

WOOD LINTELS AND BUILT-UP WOOD BEAMS

L1	2/38 x 184 (2/2" x 8") SPR.#2
B1	3/38 x 184 (3/2" x 8") SPR.#2
B2	4/38 x 184 (4/2" x 8") SPR.#2
L3	2/38 x 235 (2/2" x 10") SPR.#2
B3	3/38 x 235 (3/2" x 10") SPR.#2
B4	4/38 x 235 (4/2" x 10") SPR.#2
L5	2/38 x 286 (2/2" x 12") SPR.#2
B5	3/38 x 286 (3/2" x 12") SPR.#2
B6	4/38 x 286 (4/2" x 12") SPR.#2

LAMINATED VENEER LUMBER (LVL) BEAMS

LVL1	2-1 3/4"x7 1/4" (2-45x184)
LVL2	3-1 3/4"x7 1/4" (3-45x184)
LVL3	4-1 3/4"x7 1/4" (4-45x184)
LVL4	2-1 3/4"x9 1/2" (2-45x240)
LVL5	3-1 3/4"x9 1/2" (3-45x240)
LVL6	2-1 3/4"x11 7/8" (2-45x300)
LVL7	3-1 3/4"x11 7/8" (3-45x300)

STRIP FOOTING SUPPORTING EXTERIOR WALLS

-SEE OBC 9.15.3.  
-ASSUMING MASONRY VENEER CONSTRUCTION, MAX. FLOOR LIVE LOAD OF 2.4kPa. (50psf.) PER FLOOR, AND MAX. LENGTH OF SUPPORTED FLOOR JOISTS IS 4.9m (16'-1"). THE STRIP FOOTING SIZE IS AS FOLLOWS:  
2 STOREY ( STANDARD ) 500x155 (20"x6")  
2 STOREY ( WALK-OUT BASEMENT ) 545x175 (22"x7") (UNLESS OTHERWISE NOTED ON PLAN)

42. EXTERIOR WALLS FOR WALK-OUT CONDITIONS THE EXTERIOR BASEMENT STUD WALL TO BE 38x140 (2"x6") STUDS @ 16" o.c. OR 38x89 (2"x4") STUDS @ 12"o.c..

FLASHING FOR EXT. WALL OPENINGS (O.B.C.9.27.3.8.(3))

44. SUMP PITS (WHERE REQ'D) SEE O.B.C. 9.14.5.2 -MUST BE SEALED AS PER 9.25.3.3.(16)

41. STRIP FOOTING SUPPORTING EXTERIOR WALLS  
-SEE OBC 9.15.3.  
-ASSUMING MASONRY VENEER CONSTRUCTION, MAX. FLOOR LIVE LOAD OF 2.4kPa. (50psf.) PER FLOOR, AND MAX. LENGTH OF SUPPORTED FLOOR JOISTS IS 4.9m (16'-1"). THE STRIP FOOTING SIZE IS AS FOLLOWS:  
2 STOREY ( STANDARD ) 500x155 (20"x6")  
2 STOREY ( WALK-OUT BASEMENT ) 545x175 (22"x7") (UNLESS OTHERWISE NOTED ON PLAN)

42. EXTERIOR WALLS FOR WALK-OUT CONDITIONS THE EXTERIOR BASEMENT STUD WALL TO BE 38x140 (2"x6") STUDS @ 16" o.c. OR 38x89 (2"x4") STUDS @ 12"o.c..

FLASHING FOR EXT. WALL OPENINGS (O.B.C.9.27.3.8.(3))

44. SUMP PITS (WHERE REQ'D) SEE O.B.C. 9.14.5.2 -MUST BE SEALED AS PER 9.25.3.3.(16)

41. STRIP FOOTING SUPPORTING EXTERIOR WALLS  
-SEE OBC 9.15.3.  
-ASSUMING MASONRY VENEER CONSTRUCTION, MAX. FLOOR LIVE LOAD OF 2.4kPa. (50psf.) PER FLOOR, AND MAX. LENGTH OF SUPPORTED FLOOR JOISTS IS 4.9m (16'-1"). THE STRIP FOOTING SIZE IS AS FOLLOWS:  
2 STOREY ( STANDARD ) 500x155 (20"x6")  
2 STOREY ( WALK-OUT BASEMENT ) 545x175 (22"x7") (UNLESS OTHERWISE NOTED ON PLAN)

42. EXTERIOR WALLS FOR WALK-OUT CONDITIONS THE EXTERIOR BASEMENT STUD WALL TO BE 38x140 (2"x6") STUDS @ 16" o.c. OR 38x89 (2"x4") STUDS @ 12"o.c..

41. STRIP FOOTING SUPPORTING EXTERIOR WALLS  
-SEE OBC 9.15.3.  
-ASSUMING MASONRY VENEER CONSTRUCTION, MAX. FLOOR LIVE LOAD OF 2.4kPa. (50psf.) PER FLOOR, AND MAX. LENGTH OF SUPPORTED FLOOR JOISTS IS 4.9m (16'-1"). THE STRIP FOOTING SIZE IS AS FOLLOWS:  
2 STOREY ( STANDARD ) 500x155 (20"x6")  
2 STOREY ( WALK-OUT BASEMENT ) 545x175 (22"x7") (UNLESS OTHERWISE NOTED ON PLAN)

LOOSE STEEL LINTELS

L7	90 x 90 x 6.0L (3-1/2" x 3-1/2" x 1/4"L)
L8	90 x 90 x 8.0L (3-1/2" x 3-1/2" x 5/16"L)
L9	100 x 90 x 8.0L (4" x 3-1/2" x 5/16"L)
L10	125 x 90 x 8.0L (5" x 3-1/2" x 5/16"L)
L11	125 x 90 x 10.0L (5" x 3-1/2" x 3/8"L)
L12	150 x 100 x 10.0L (6"x 4" x 3/8"L)

STEEL COLUMNS (UNLESS NOTED OTHERWISE)

TP = (1) 3" DIA. ADJ. ST. POST  
2TP = (2) 3" DIA. ADJ. ST. POSTS  
HSS = 3.5"x3.5" HOLLOW STRUCTURAL SECTION STEEL POST

MASONRY VENEER LINTEL SCHEDULE [OBC2012] PROVIDE 6"MINIMUM BEARING EACH END 9.20.5.2B	
OPENINGS	LINTEL SIZE
UP TO 8'-0"	3 1 1/2" x 3 1 1/2" x 1 1/4"
8'-0" TO 8'-8"	4" x 3 1 1/2" x 1 1/4"
8'-8" TO 10'-10"	5" x 3 1 1/2" x 5/16"
10'-10" TO 11'-5"	5" x 3 1 1/2" x 7/16"
11'-5" TO 11'-9"	5" x 3 1 1/2" x 1/2"
11'-9" TO 12'-6"	6" x 3 1 1/2" x 7/16"
12'-6" TO 13'-4"	6" x 3 1 1/2" x 1 1/2"

LEGEND

M.C.

MEDICINE CABINET

DOUBLE VOLUME WALL

SEE NOTE 39.

SOLID WOOD BEARING

P2 - 2 MEMBER BUILT-UP STUD  
P3 - 3 MEMBER BUILT-UP STUD  
P4 - 4 MEMBER BUILT-UP STUD  
P5 - 5 MEMBER BUILT-UP STUD

EXHAUST VENT

DUPLEX OUTLET (12" HIGH)

WEATHERPROOF DUPLEX OUTLET

HEAVY DUTY OUTLET

POT LIGHT

LIGHT FIXTURE (CEILING MOUNTED)

LIGHT FIXTURE (WALL MOUNTED)

SWITCH

SWITCH (3-WAY)

FLOOR DRAIN

HOSE BIB

DOUBLE JOIST

LVL LAMINATED VENEER LUMBER

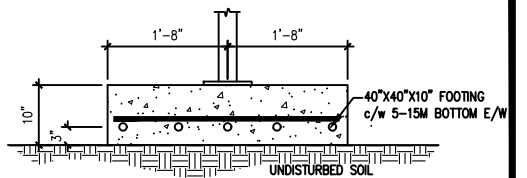
POINT LOAD FROM ABOVE

P.T. PRESSURE TREATED LUMBER

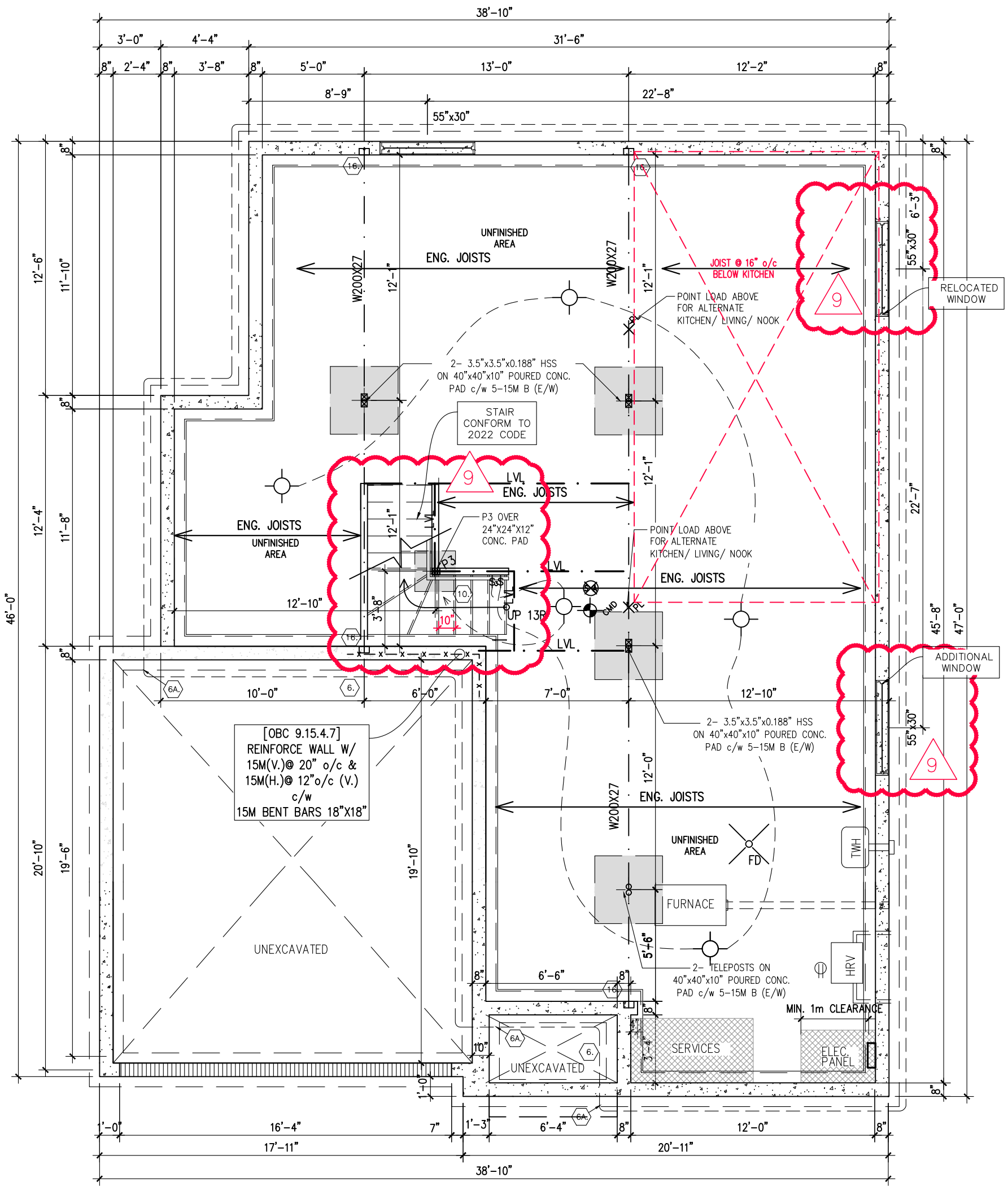
G.T. GIRDER TRUSS

CONTRACTOR MUST VERIFY ALL DIMENSIONS ON THE JOB AND REPORT ANY DISCREPANCY TO DCR/PHOENIX BEFORE PROCEEDING WITH THE WORK. ALL DRAWINGS AND SPECIFICATIONS ARE INSTRUMENTS OF SERVICE AND THE PROPERTY OF THE DCR/PHOENIX WHICH MUST BE RETURNED AT THE COMPLETION OF THE WORK. ALL DRAWINGS TO BE USED FOR CONSTRUCTION ONLY AFTER BUILDING PERMIT HAS BEEN ISSUED. DO NOT SCALE DRAWINGS, USE DIMENSIONS PROVIDED.

**\*\*NOTE\*\***  
ALL WINDOW LINTELS TO BE 2-2X10  
W/ P2 POSTS ON EACH SIDE U.N.O.



OVERSIZE PAD DETAIL



City of Ottawa  
Building Services Branch  
REVIEWED  
By rossgr1 at 8:55 am, Oct 11, 2022  
Building Code Reviewed  
Signature

HOUSE STATISTICS	
ELEVATION= B	BEDROOMS= 4
SQ. FT. GROUND FLR = 1259	
SQ. FT. SECOND FLR = 1266	
TOTAL = 2525	
SQ. FT. BASEMENT = UNFINISHED	
SQ. FT. FRONT PORCH = 30	
SQ. FT. DECK = 0	

## FOUNDATION PLAN ELEVATION B

517-RUTHERFORD-2015

SITE: PATHWAYS PH2

LOT NUMBER:

363

CIVIC ADDRESS:  
582 PAAKANAAK AVENUE

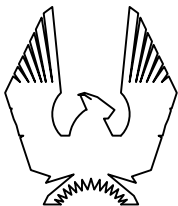
9	PERMIT APPLICATION	22/09/22	CB
8	FINAL BLACKLINES	31/08/22	CB
7	BEP BLACKLINES	21/04/22	KE
6	TUB CHANGED TO MAAX EXHIBIT 60X32	09/02/21	CB
5	UPDATE BASEMENT WINDOWS	01/09/19	SP
4	BEAM ADDED - ELEVATION C MASTER BEDROOM	13/08/18	SP
No.	Description	dd/mm/yy	By
REVISIONS			

footprint: 517  
designed by: TL  
drawn by: SP  
date: NOV/15  
scale: 3/16"=1'-0"

D.C.L.-193 sheet

sheet title: A1a

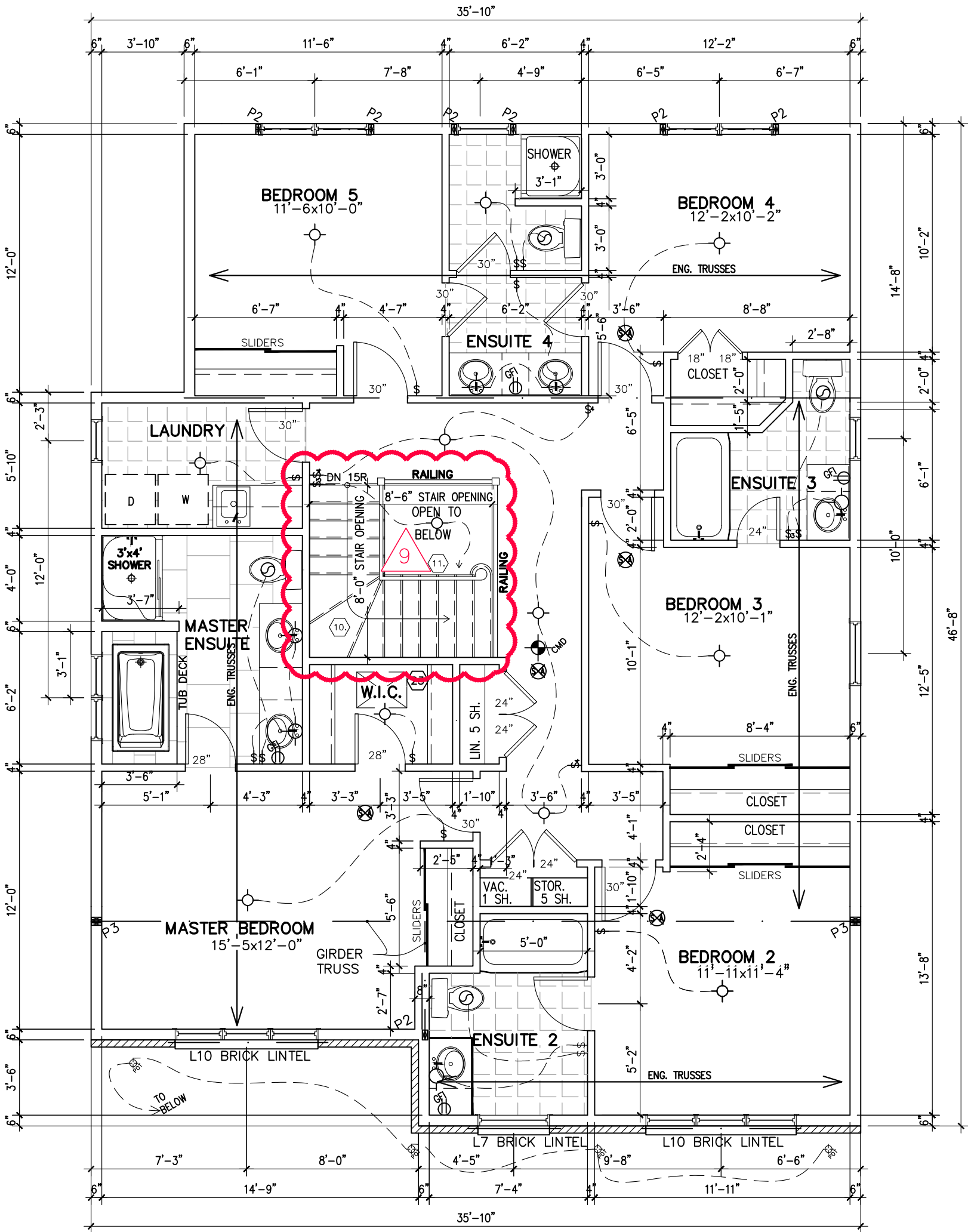
2 of 9



PHOENIX HOMES



CONTRACTOR MUST VERIFY ALL DIMENSIONS ON THE JOB AND REPORT ANY DISCREPANCY TO DCR/PHOENIX BEFORE PROCEEDING WITH THE WORK.  
ALL DRAWINGS AND SPECIFICATIONS ARE INSTRUMENTS OF SERVICE AND THE PROPERTY OF THE DCR/PHOENIX WHICH MUST BE RETURNED AT THE COMPLETION OF THE WORK.  
ALL DRAWINGS TO BE USED FOR CONSTRUCTION ONLY AFTER BUILDING PERMIT HAS BEEN ISSUED.  
DO NOT SCALE DRAWINGS, USE DIMENSIONS PROVIDED.

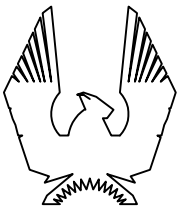


City of Ottawa  
Building Services Branch

REVIEWED  
By rossgr1 at 8:55 am, Oct 11, 2022

Building Code Reviewed

5th BEDROOM OPTION  
SECOND FLOOR PLAN  
ELEVATION B



PHOENIX HOMES

517-RUTHERFORD-2015

SITE: PATHWAYS PH2

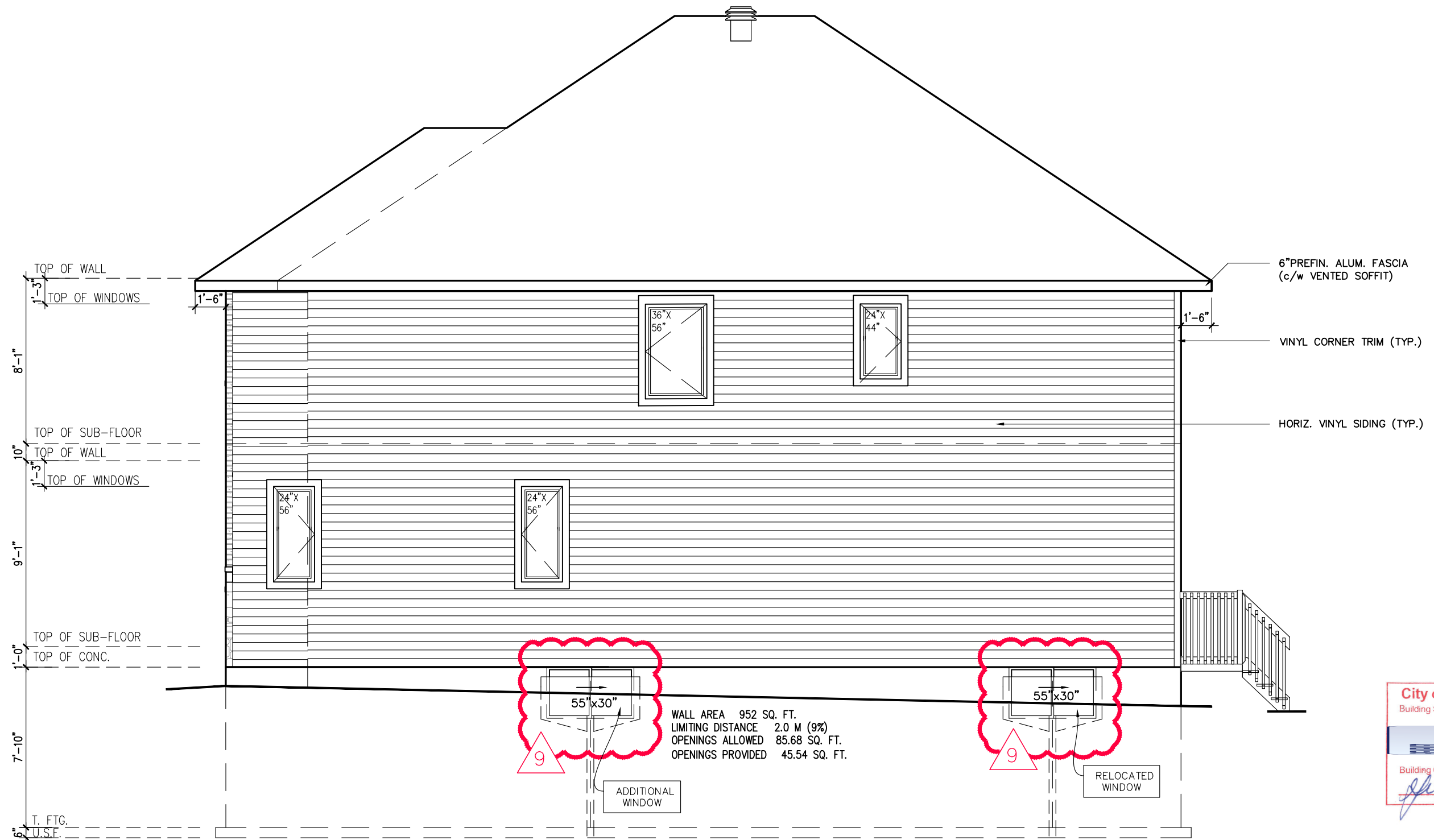
LOT NUMBER:

363

CIVIC ADDRESS:  
582 PAAKANAAK AVENUE

9	PERMIT APPLICATION	22/09/22	CB
8	FINAL BLACKLINES	31/08/22	CB
7	BEP BLACKLINES	21/04/22	KE
6	TUB CHANGED TO MAAX EXHIBIT 60X32	09/02/21	CB
5	UPDATE BASEMENT WINDOWS	01/09/19	SP
4	BEAM ADDED - ELEVATION C MASTER BEDROOM	13/08/18	SP
No. Description		dd/mm/yy	By
REVISIONS			

footprint: 517
designed by: TL
drawn by: SP
date: NOV/15
scale: 3/16"=1'-0"
D.C.L.-193 sheet
sheet title: A11
4 of 9



RIGHT SIDE ELEVATION B



517-RUTHERFORD-2015

SITE: PATHWAYS PH2

LOT NUMBER:

363

CIVIC ADDRESS:  
582 PAAKANAAK AVENUE

9	PERMIT APPLICATION	22/09/22	CB
8	FINAL BLACKLINES	31/08/22	CB
7	BEP BLACKLINES	21/04/22	KE
6	TUB CHANGED TO MAAX EXHIBIT 60X32	09/02/21	CB
5	UPDATE BASEMENT WINDOWS	01/09/19	SP
4	BEAM ADDED - ELEVATION C MASTER BEDROOM	13/08/18	SP
REVISIONS			
No.	Description	dd/mm/yy	By

footprint: 517
designed by: TL
drawn by: SP
date: NOV/15
scale: 3/16"=1'-0"
D.C.L.-193
sheet 8 of 9
sheet title: A7b