

SPECTRUM KITCHENS OTTAWA

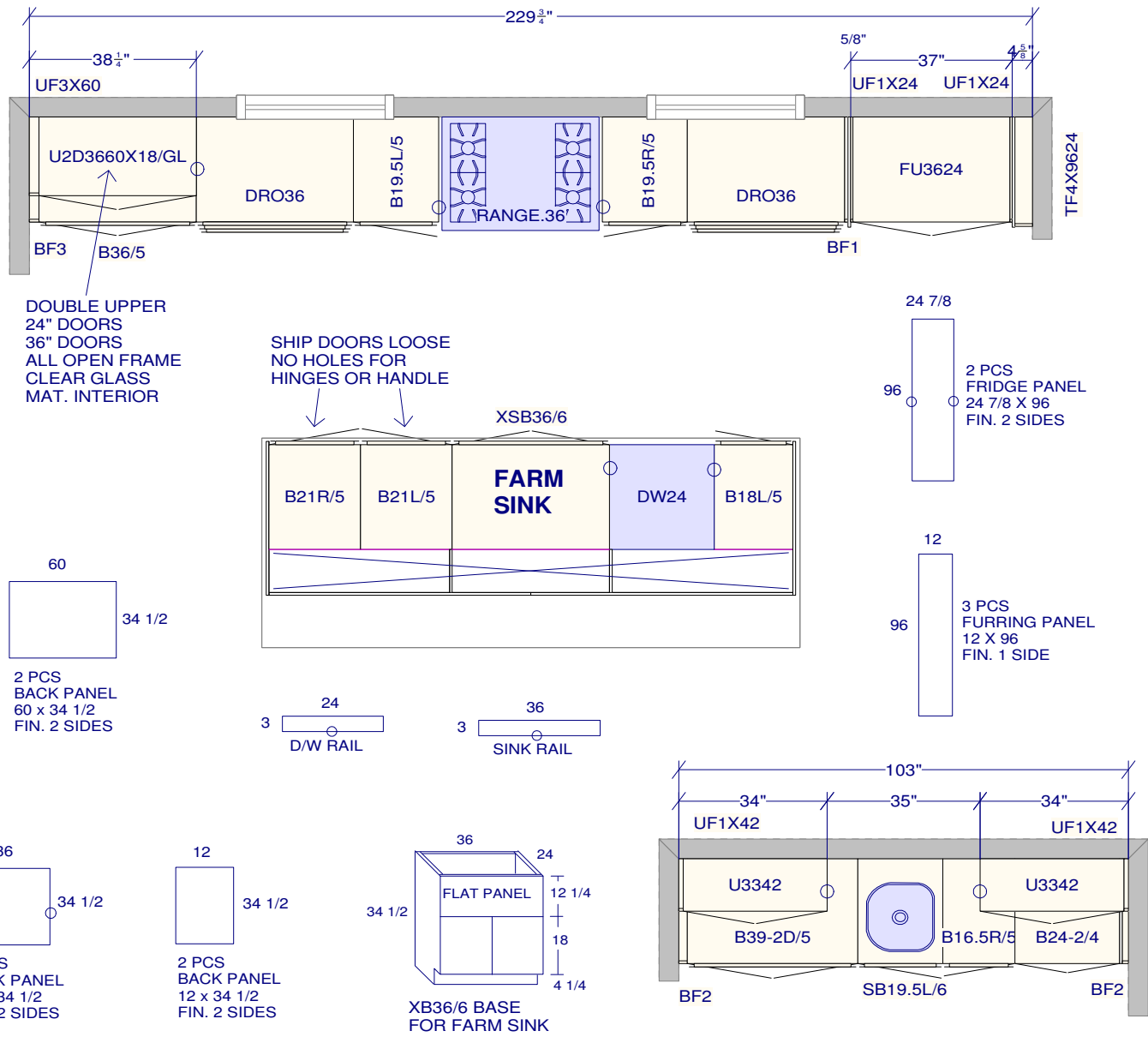
DCR PHOENIX HOMES  
50 WHITE TAIL RIDGE PH3

MODEL - NEWINGTON

KITCHEN

MOUNTING HEIGHT - 96 + FILL TO CEILING

- LINE 3 - SOHO REVERE PEWTER MDF
- HARDWARE - HU64
- STANDARD WHITE INTERIOR
- SOFT CLOSING DRAWERS
- SOFT CLOSING DOORS
- 7 PCS - 5/8" KICK - FIN. BOTH ENDS
- 2 PCS - 90 DEG. CORNER MOULD
- 1 PCS - T-MOULD
- 8 PCS - FLAT MOULDING
- 3 PCS - FLUSH KICK
- 3 PCS - CEILING CROWN
- 1 PCS - DUMMY DRAWER - 36 x 12



All dimensions \_size designations  
given are subject to verification on  
job site and adjustment to fit job  
conditions.



This is an original design and must  
not be released or copied unless  
applicable fee has been paid or job  
order placed.

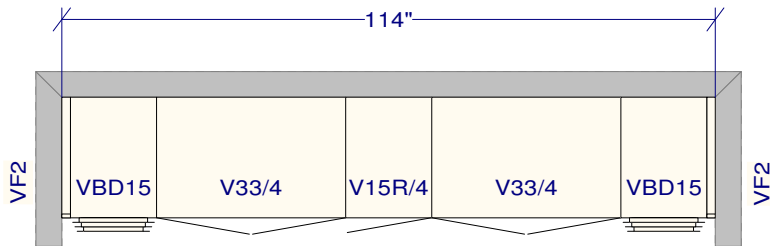
Designed: 2023-10-25  
Printed: 2023-11-03

SPECTRUM KITCHENS OTTAWA

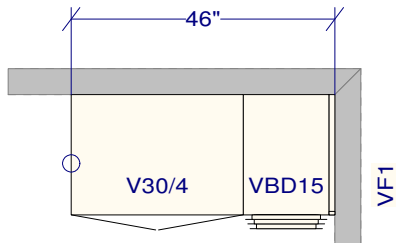
DCR PHOENIX HOMES  
50 WHITE TAIL RIDGE PH3

MODEL - NEWINGTON

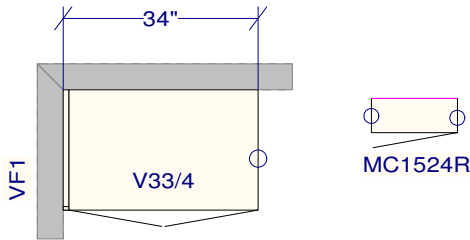
VANITIES - PART 1



MAIN (JACK AND JILL)  
LINE 2 - MISSION WHITE SATIN  
HARDWARE - HU70  
STANDARD WHITE INTERIOR  
METAL DRAWER BOX  
2 PCS - 5/8" KICK - FIN. BOTH ENDS  
2 PCS - FLAT MOULDING



IN-LAW SUITE  
LINE 2 - POLO ELEGANT OAK  
HARDWARE - HU60  
STANDARD WHITE INTERIOR  
METAL DRAWER BOX  
1 PCS - 5/8" KICK - FIN. BOTH ENDS  
1 PCS - FLAT MOULDING



ENSUITE #4  
LINE 2 - MISSION WHITE SATIN  
HARDWARE - HU70  
STANDARD WHITE INTERIOR  
METAL DRAWER BOX  
1 PCS - 5/8" KICK - FIN. BOTH ENDS  
1 PCS - FLAT MOULDING

All dimensions \_size designations  
given are subject to verification on  
job site and adjustment to fit job  
conditions.



This is an original design and must  
not be released or copied unless  
applicable fee has been paid or job  
order placed.

Designed: 2023-10-25  
Printed: 2023-11-03

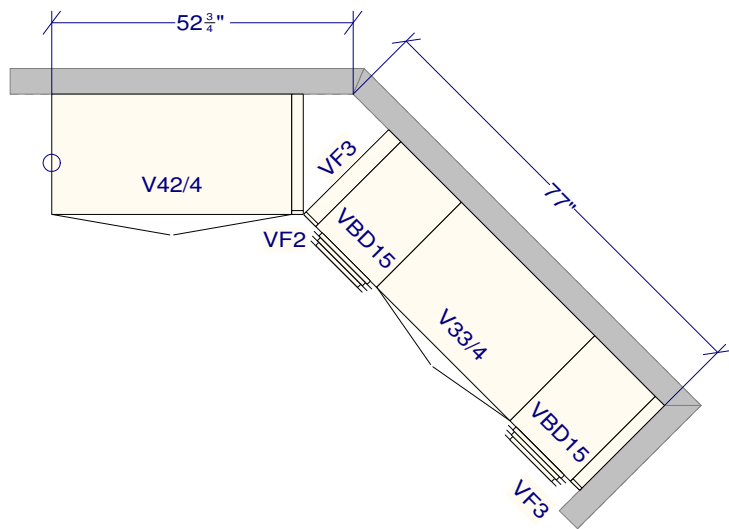
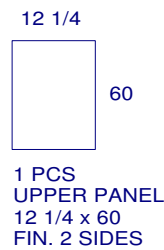
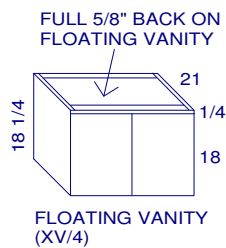
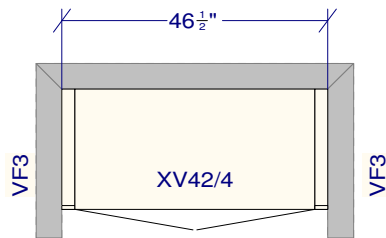
SPECTRUM KITCHENS OTTAWA

DCR PHOENIX HOMES  
50 WHITE TAIL RIDGE PH3

MODEL - NEWINGTON

VANITIES - PART 2

POWDER  
LINE 3 - SOHO ANTHRACITE MDF  
HARDWARE - HU70  
STANDARD WHITE INTERIOR  
METAL DRAWER BOX  
1 PCS - FLAT MOULDING



MASTER ENSUITE  
LINE 3 - SOHO TAUPE OAK  
HARDWARE - KU60  
STANDARD WHITE INTERIOR  
METAL DRAWER BOX  
2 PCS - 5/8" KICK - FIN. BOTH ENDS  
2 PCS - FLAT MOULDING