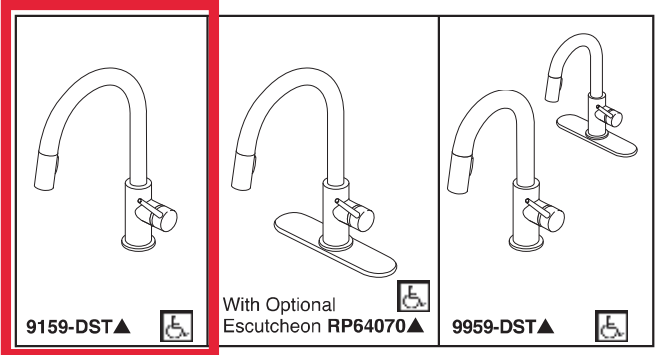
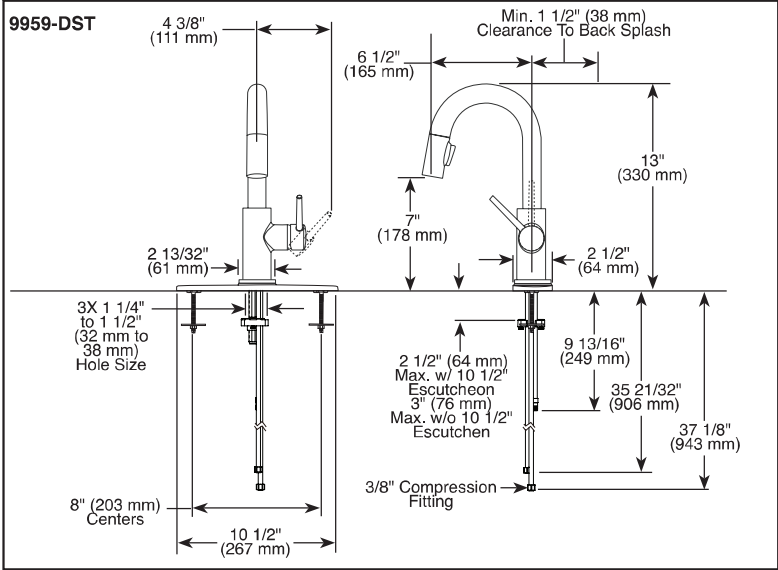
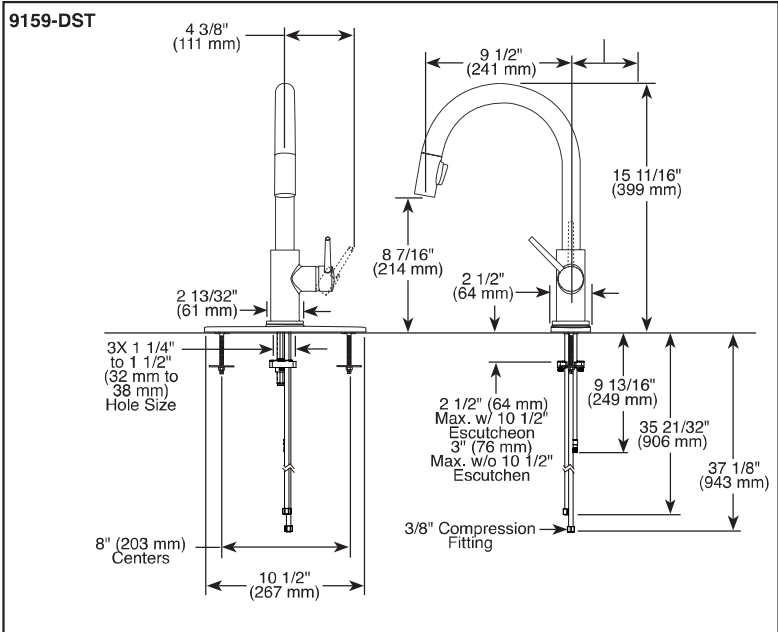


I F&>AF #S+ Z=;F5: 7@ 83G57F +# +Z4>Z6EF



Submitted Model No.: _____

Specific Features: _____



▲ Designate proper finish suffix

Delta reserves the right (1) to make changes in specifications and materials, and (2) to change or discontinue models, both without notice or obligation. Dimensions are for reference only. See current full-line price book or www.deltafaucet.com for finish options and product availability.

DSP-K-9159-DST Rev. F



see what Delta can do™

KITCHEN FAUCETS

- Trinsic® Collection
- Single Handle Deck Mount
- 2-Function Pull-Down Sprayer

FEATURES:

- MagnaTite® Magnetic System
- DIAMOND Seal® Technology
- Touch-Clean® Sprayhead


STANDARD SPECIFICATIONS:

- Maximum 1.8 gpm @ 60 psi, 6.8 L/min @ 414 kPa
- One or three hole mount (escutcheon optional, not included)
- Spout rotates 360°
- Control mechanism shall be full-motion valve cartridge
- Two-function wand; Aerated stream or spray
- Red/blue indicator markings
- Dual integral check valves in sprayer
- Quick connect hoses

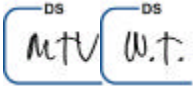
WARRANTY

- Parts and Finish - Lifetime limited warranty; or for commercial purchasers, 10 years for multi-family residential (apartments and condominiums) and 5 years for all other commercial uses, in each case from the date of purchase.
- Electronic Parts and Batteries (if applicable) - 5 years from the date of purchase; or for commercial purchasers, 1 year from the date of purchase. No warranty is provided on batteries.

COMPLIES WITH:

- ASME A112.18.1 / CSA B125.1
- ASME A112.18.6
-  Indicates compliance to ICC/ANSI A117.1
- Verified compliant with .25% weighted average Pb content regulations.

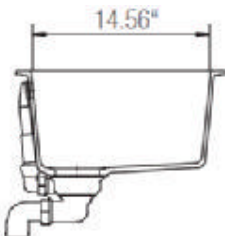
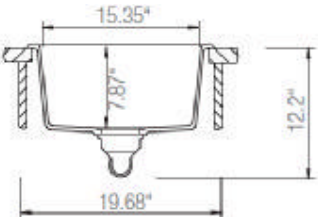
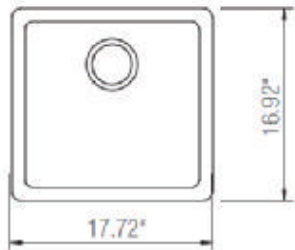
Delta Faucet Company
55 E. 111th Street, Indianapolis, IN 46280
350 South Edgeware Road, St. Thomas, ON N5P 4L1
© 2019 Delta Faucet Company



WT4 LOT 129 - LAUNDRY ROOM SINK B306

Product Specification Sheet

Virtuo Granite Sinks - Single Bowl
B306 - ~~B307~~ - ~~B308~~ - ~~B328~~ - ~~B335~~



Colour Finish	Model No.
Pearl Black	B306
Coffee Brown	B307
Slate Grey	B308
Asphalt	B328
Stone Taupe	B335

- Description**
- Undermount granite single bowl sink
 - 17-¾ x 16-7/8" x 7-¾" Deep
 - 80% quartz Content
 - 3 1/2" drain opening
 - Supplied with installation clips, template & strainers
 - CUPC certified

- Available accessories**
- Matching Strainer
 - Drying Rack
 - BG306/307/308/328/335 - Stainless Steel Grid



MAIN LOCATION

BRISTOL SINKS
56 Firestone Blvd
London, Ontario
N5W 6E6

WESTERN LOCATION

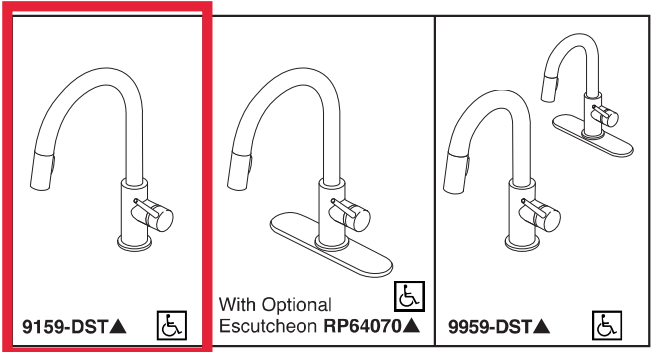
BRISTOL SINKS
964 72nd Avenue NE
Calgary, Alberta
T2E 8V9

CONTACT

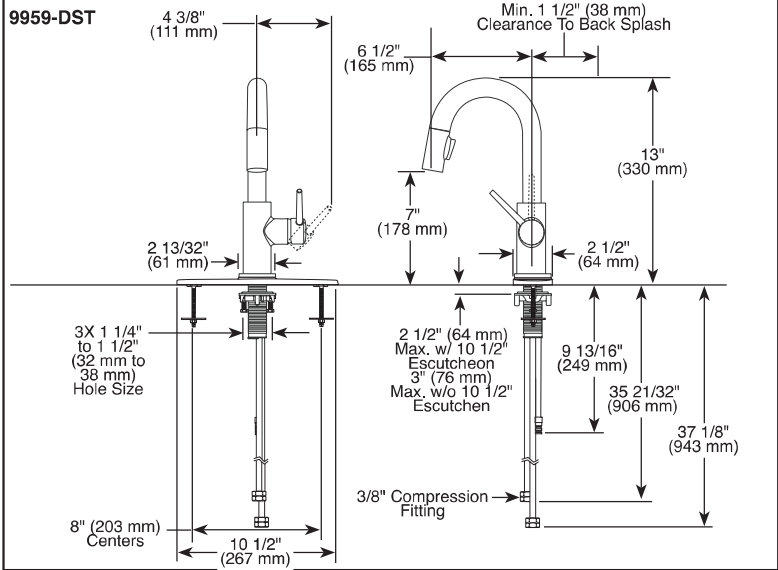
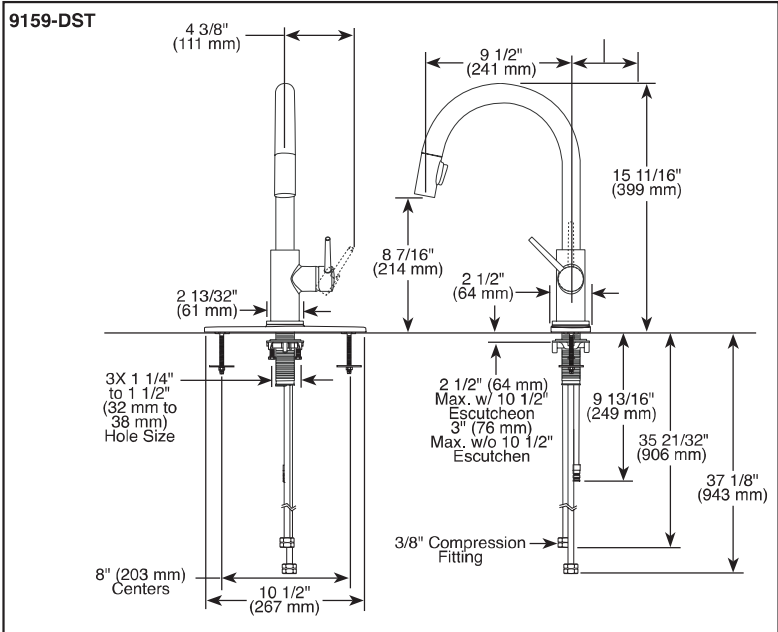
Tel: 1 (800) 930-0214
Fax: 1 (866) 310-7580
Email: sales@bristolsinks.com



WT4 LOT 129 - LAUNDRY ROOM FAUCET 9959-BL-DST



Submitted Model No.:
Specific Features:



▲ Designate proper finish suffix
Delta reserves the right (1) to make changes in specifications and materials, and (2) to change or discontinue models, both without notice or obligation. Dimensions are for reference only. See current full-line price book or www.deltafaucet.com for finish options and product availability.
DSP-K-9159-DST Rev. E

DELTA
KITCHEN
FAUCETS

- Trinsic® Collection
- Single Handle Deck Mount
- 2-Function Pull-Down Sprayer
- Single or 3 Hole Sink Applications
- Centermount or 8" (203 mm) Centers w/ Optional 10 1/2" (267 mm) Escutcheon
- MagnaTite® Magnetic Docking

STANDARD SPECIFICATIONS:

- Single handle, 2-function pull-down kitchen faucets for exposed mounting on single or three hole sinks.
- Solid brass fabricated body.
- 15 11/16" (399 mm) high, 9 1/2" (241 mm) long, spout swings 360°.
- Lever handle. Control mechanism shall be full-motion valve cartridge.
- Touch-Clean® sprayhead.
- Quick connect hoses.
- Pull-down wand operates in an aerated or spray mode via ergonomic buttons.
- Red/blue indicator on handle button to indicate hot/cold temperature.
- MagnaTite® magnetic docking.
- Dual integral check valves in sprayer.
- Mounting wrench to assist in tightening mounting nut securely.
- Hose travels inside mounting shank so it will not interfere with deck edges.
- Keyed 10 1/2" (267 mm) escutcheon to help alignment and aid installation.
- Maximum 1.80 gpm @ 60 psi, 6.8 L/min @ 414 kPa

WARRANTY

- Lifetime limited warranty on parts (other than electronic parts and batteries) and finishes: or, for commercial users, for 5 years from date of purchase.
- 5 year limited warranty on electronic parts (other than batteries); or, for commercial users, for 1 year from the date of purchase. No warranty is provided on batteries.

COMPLIES WITH:

- ASME A112.18.1 / CSA B125.1
- ASME A112.18.6
- Indicates compliance to ICC/ANSI A117.1
- Verified compliant with .25% weighted average Pb content regulations.

DELTA
FAUCET COMPANY

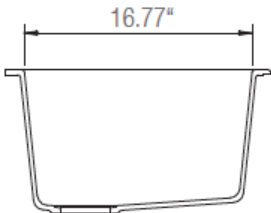
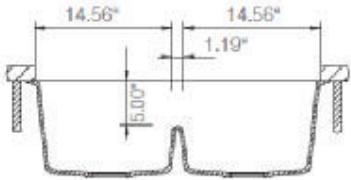
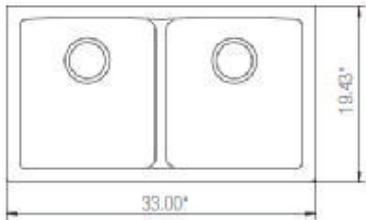
55 E 111th Street, Indianapolis, Indiana 46280
350 South Edgeware Road, St. Thomas, ON N5P 4L1
© 2015 Masco Corporation of Indiana

DS DS
MTV W.T.

WT4 LOT 129 - KITCHEN SINK B315

Product Specification Sheet

Virtuo Granite Low Divide Granite Sink
B315 - ~~B316~~ - ~~B326~~ - ~~B331~~ - ~~B338~~



Colour Finish	Model No.
Pearl Back	B315
Coffee Brown	B316
Slate Grey	B326
Asphalt	B331
Stone Taupe	B338

- Description**
- Undermount granite low divide double bowl sink
 - 33"x18-½" x 9-½" Deep
 - Center divider is set halfway down
 - 80% Quartz content 20 % resin
 - 3 1/2" drain opening
 - Supplied with installation clips, template & strainers
 - CUPC certified

Available accessories

- Matching Strainer
- Drying Rack
- BG315/316/326/331/338 - Stainless Steel Grid



MAIN LOCATION

BRISTOL SINKS
56 Firestone Blvd
London, Ontario
N5W 6E6

WESTERN LOCATION

BRISTOL SINKS
964 72nd Avenue NE
Calgary, Alberta
T2E 8V9

CONTACT

Tel: 1 (800) 930-0214
Fax: 1 (866) 310-7580
Email: sales@bristolsinks.com



WT4 LOT 129 - MAIN BATHROOM AND PRIMARY ENSUITE VANITY
FAUCETS 563LF-BL



LAVATORY FAUCETS

- ☐ Kitano™ Collection
- ☐ Single Handle Deck Mount

STANDARD SPECIFICATIONS:

- Max flow rate 1.2 gpm (4.5 L/min) (Aerated pressure compensating)
- Standard single hole mount or three hole mount with optional - 6.125" (154 mm) Escutcheon (sold seperately)
- Poly-braided supply lines
- 3.0" (75 mm) max. deck thickness
- Ceramic cartridge
- Hot-Cold indicator
- Metal lever handle
- Solid brass body
- 29.5" (751 mm) long flexible supply lines with 9/16" supply fittings
- Rigid Spout
- Models have 50/50 drain with pop-up type fitting with plated flange and stopper
- "-LPU" models are supplied less the 50/50 drain with pop-up type fitting with plated flange and stopper

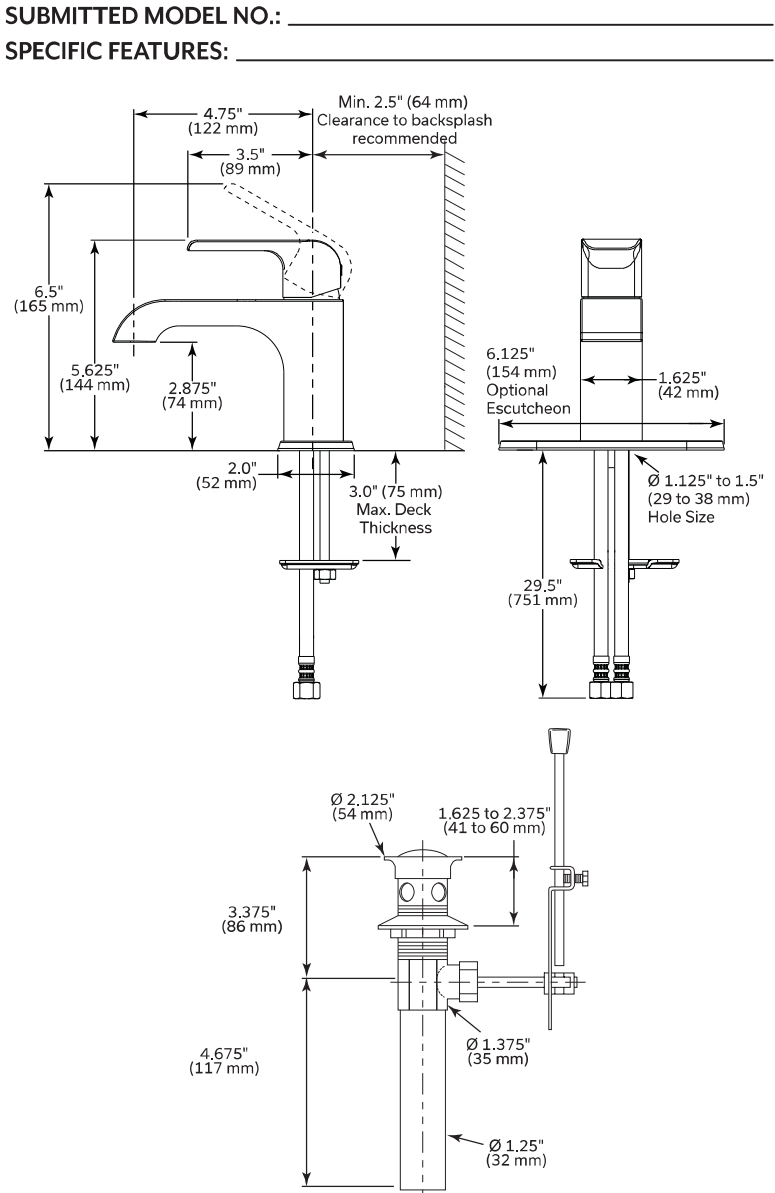
OPTIONAL ACCESSORIES (sold seperately)

- RP100784▲ - 6-1/8" (154 mm) escutcheon
- 33W576▲ - push pop-up with overflow holes



COMPLIES WITH

- ASME A112.18.1 / CSA B125.1
- EPA WaterSense®
- Verified compliant with 0.25% weighted average Pb content regulations
- Indicates compliance to ICC/ANSI A117.1



▲ Designate Proper Finish Suffix
WaterSense® is a registered trademark of the U.S. Environmental Protection Agency
NOTICE Dimensions are for reference only. Measurements may vary ± 0.25" (6 mm)

Delta Faucet Company reserves the right (1) to make changes in specifications and materials, and (2) to change or discontinue models, both without notice or obligation. See current full-line price book or www.deltafaucet.ca for finish options and product availability.

Delta Faucet Company
350 South Edgeware Road, St. Thomas, ON N5P 4L1
55 E. 111th Street, Indianapolis, IN 46280
© 2021 Delta Faucet Company

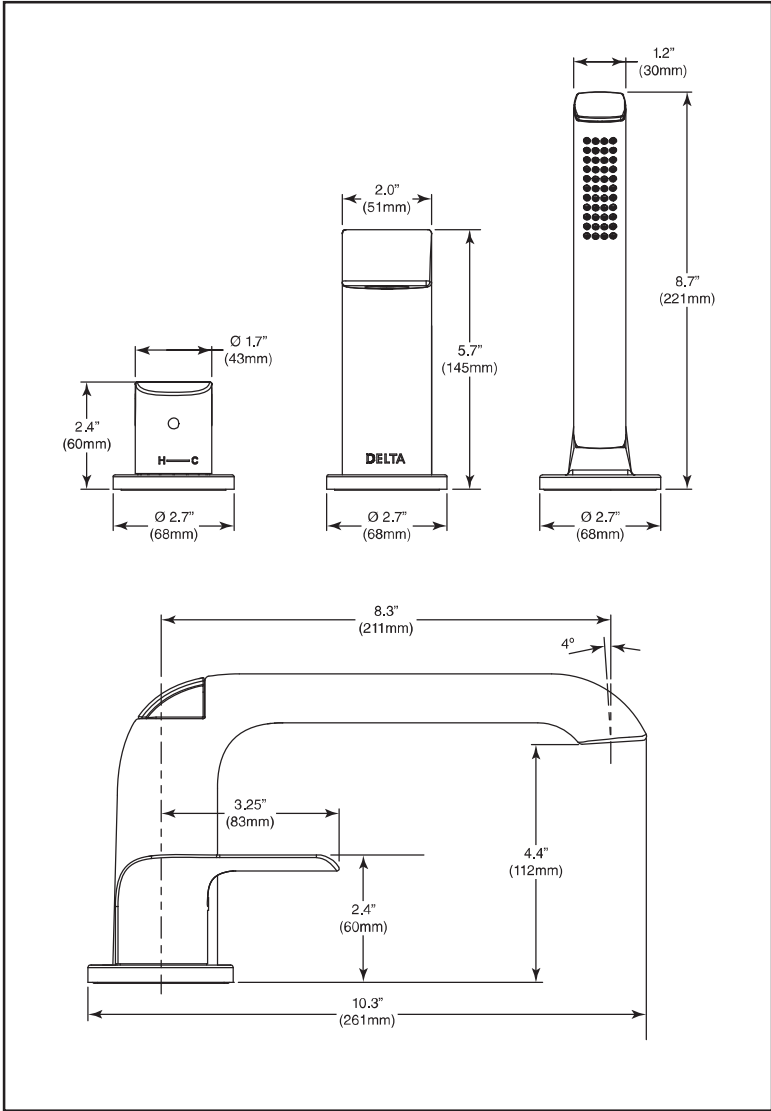
DSP-L-563LF, Rev. B

DS DS
MTV W.T.

I F&>AF #S+ ŽBD;? 3DK 7@EG;F7 EA3= 7DFG4 FD,? F% (%ŽA>



Submitted Model No.: _____
Specific Features: _____



▲ Designate Proper Finish Suffix

Delta Faucet Company reserves the right (1) to make changes in specifications and materials, and (2) to change or discontinue models, both without notice or obligation. Dimensions are for reference only. See current full-line price book or www.deltafaucet.com for finish options and product availability.
DSP-B-T3763, Rev. A



BATHROOM FAUCETS

- Kitano™ Bath Collection
- Single Handle Roman Tub Faucet with Hand Shower
- Three Hole Installation

STANDARD SPECIFICATIONS:

- Hand Shower maximum flow rate 1.75gpm @ 80psi, 6.6 L/min @ 550kPa
- Trim only for single handle Roman Tub Faucet with Hand Shower
- Hand Shower includes double check valves for backflow prevention
- Temperature only controlled with handle
- Hot/cold indicator
- Rough-in Kit must be ordered to complete installation:
 - R3707 for flexible rough-in
 - R3707-MF for flexible PEX cold expansion rough-in
 - R3707-PX for flexible PEX crimp rough-in
 - R3716 for fixed rough-in
 - R3716-MF for fixed PEX cold expansion rough-in
 - R3716-PX for fixed PEX crimp rough-inThere are separate specification sheets on each rough-in kit, if more detail is required

WARRANTY

- Parts and Finish - Lifetime limited warranty; or for commercial purchasers, 10 years for multi-family residential (apartments and condominiums) and 5 years for all other commercial uses, in each case from the date of purchase.
- Electronic Parts and Batteries (if applicable) - 5 years from the date of purchase; or for commercial purchasers, 1 year from the date of purchase. No warranty is provided on batteries.



COMPLIES WITH:

- ASME A112.18.1 / CSA B125.1
- EPA WaterSense®
- Indicates compliance to ICC/ANSI A117.1

Delta Faucet Company
55 E. 111th Street, Indianapolis, IN 46280
350 South Edgeware Road, St. Thomas, ON N5P 4L1
© 2020 Delta Faucet Company

DS DS
MTU W.T.

Square Pressure Balance Shower Kit

MODEL#: DF-KIT23-PBSBL-WS



List Price*:

\$1,937.20

Installation Information

Valve Type :
NA

DS DS
MTV W.T.

Chat with an Expert

I F&>AF #\${ ŽBD;? 3DK 7@EG;F7: 3@6: 7>6

Submitted Model No.:
Specific Features:



see what Delta can do™

PERSONAL
HAND HELD
SHOWERS

■ Touch-Clean® Nozzles

STANDARD SPECIFICATIONS:

- Maximum 2.5 gpm @ 80 psi, 9.5 L/min @ 550 kPa (57014 only)
- Maximum 1.75 gpm @ 80 psi, 6.6 L/min @ 550 kPa
- Hand held shower with one or three spray settings
- 60"-82" stretchable metal hose
- Certified dual check valves for backflow protection
- 24" (610 mm) wall bar with adjustable slide (allows for adjustable shower height) - 57014, 57021, 57051 and 57085 only. Not to be used as a Grab Bar. Not ADA compliant
- Wall mount bracket - 55013, 55020, 55021, 55051 and 55085 only

WARRANTY

- Lifetime limited warranty on parts (other than electronic parts and batteries) and finishes; or, for commercial users, for 5 years from date of purchase.
- 5 year limited warranty on electronic parts (other than batteries); or, for commercial users, for 1 year from the date of purchase. No warranty is provided on batteries.

COMPLIES WITH:

- ASME A112.18.1/CSA B125.1 ♦
- EPA WaterSense®

<p>57014▲ 2.5 GPM</p> <p>24" (610mm)</p> <p>60"-82" (1524 mm-2083 mm)</p> <p>Full Body Spray</p> <p>Massage Spray</p> <p>Soft Drench Spray</p> <p>Accepts 1/2" - 14 NPSM Male</p>	<p>57021▲ 1.75 GPM</p> <p>24" (610mm)</p> <p>60"-82" (1524 mm-2083 mm)</p> <p>Full Body Spray</p> <p>Massage Spray</p> <p>Soft Drench Spray</p> <p>Accepts 1/2" - 14 NPSM Male</p>	<p>57051▲ 1.75 GPM</p> <p>25 3/4" (654 mm)</p> <p>60"-82" (1524 mm-2083 mm)</p> <p>Full Body Spray</p> <p>Accepts 1/2" - 14 NPSM Male</p>
<p>57085▲ 1.75 GPM</p> <p>24" (610mm)</p> <p>60"-82" (1524 mm-2083 mm)</p> <p>Full Body Spray</p> <p>Accepts 1/2" - 14 NPSM Male</p>	<p>55013▲ 1.75 GPM</p> <p>2 1/4" (57 mm)</p> <p>4" (102 mm)</p> <p>60"-82" (1524 mm-2083 mm)</p> <p>Full Body Spray</p> <p>Accepts 1/2" - 14 NPSM Male</p>	<p>55020▲ 1.75 GPM</p> <p>2 1/4" (57 mm)</p> <p>4" (102 mm)</p> <p>60"-82" (1524 mm-2083 mm)</p> <p>Full Body Spray</p> <p>Accepts 1/2" - 14 NPSM Male</p>
<p>55021▲ 1.75 GPM</p> <p>2 1/4" (57 mm)</p> <p>4" (102 mm)</p> <p>60"-82" (1524 mm-2083 mm)</p> <p>Full Body Spray</p> <p>Massage Spray</p> <p>Soft Drench Spray</p> <p>Accepts 1/2" - 14 NPSM Male</p>	<p>55051▲ 1.75 GPM</p> <p>2 3/8" (61 mm)</p> <p>4 1/16" (104 mm)</p> <p>60"-82" (1524 mm-2083 mm)</p> <p>Full Body Spray</p> <p>Accepts 1/2" - 14 NPSM Male</p>	<p>55085▲ 1.75 GPM</p> <p>2 1/4" (57 mm)</p> <p>4" (102 mm)</p> <p>60"-82" (1524 mm-2083 mm)</p> <p>Full Body Spray</p> <p>Accepts 1/2" - 14 NPSM Male</p>

▲ Designate proper finish suffix

♦ Your Delta Faucet handshower incorporates a backflow protection system that has been tested to be in compliance with ASME A112.18.3 and ASME A112.18.1/CSA B125.1. It incorporates two certified check valves in series, which operate independently and are integral, non-serviceable parts of the wand assembly.

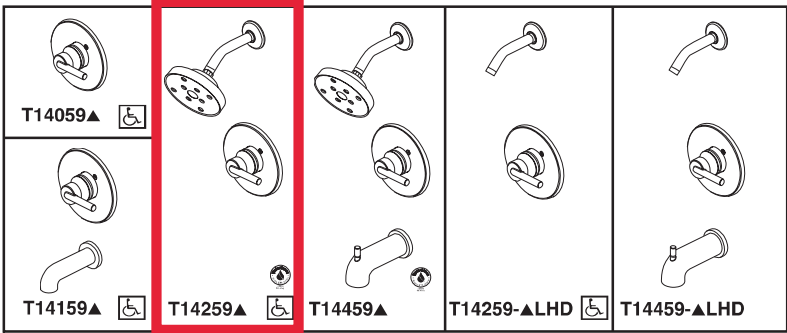
Delta reserves the right (1) to make changes in specifications and materials, and (2) to change or discontinue models, both without notice or obligation. Dimensions are for reference only. See current full-line price book or www.deltafaucet.com for finish options and product availability.

DSP-B-55021 Rev. C

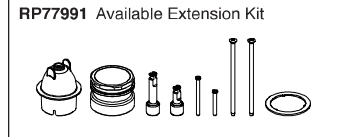
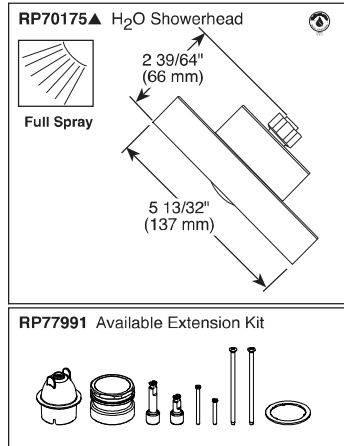
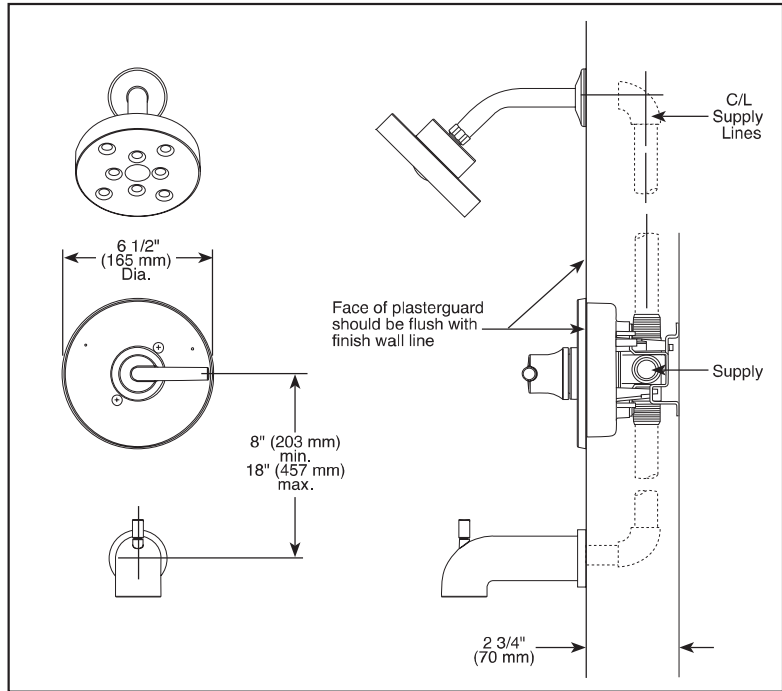
Delta Faucet Company
55 E. 111th Street, Indianapolis, IN 46280
350 South Edgeware Road, St. Thomas, ON N5P 4L1
© 2017 Delta Faucet Company

DS DS
MTV W.T.

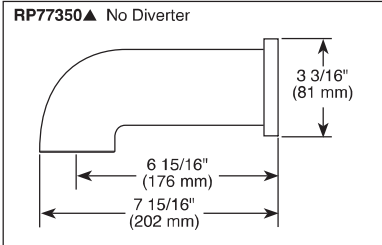
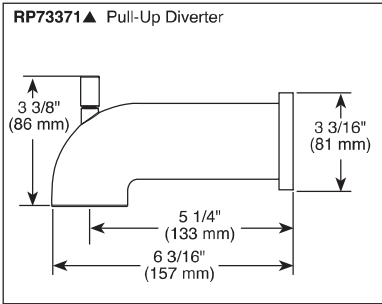
I F&>AF #S- ŽBD;? 3DK 7@EG;F7E AI 7D8JFGD7



Submitted Model No.: _____
Specific Features: _____



▲ Designate Proper Finish Suffix



Delta reserves the right (1) to make changes in specifications and materials, and (2) to change or discontinue models, both without notice or obligation. Dimensions are for reference only. See current full-line price book or www.deltafaucet.com for finish options and product availability.

DSP-B-T14059 Rev. K



see what Delta can do™

TUB AND SHOWER FAUCET TRIM

- Trinsic® Bath Collection
- Valve Only (T14059)
- Tub Only (T14159)
- Shower Only (T14259)
- Tub/Shower (T14459)

FEATURES:

- Monitor® 1.4 Series pressure balanced single handle bath mixing valve trim
- Single function H₂Okinetic® Technology showerhead

STANDARD SPECIFICATIONS:

- Maintains a balanced pressure of hot and cold water even when a valve is turned on or off elsewhere in the system
- For use with MultiChoice® Universal rough valve body (R10000 Series)
- Temperature only controlled with handle
- Field adjustable means to limit handle rotation into hot water zone
- 120° maximum handle rotation
- Maximum 1.75 gpm @ 80 psi, 6.6 L/min @ 550 kPa
- Red/blue pad print temperature indicators on escutcheon
- "LHD" models indicate less showerhead
- 1/2" CWT slip-on spout adapter
- Stem extension kit RP77991 can be ordered to allow for an additional 1 3/4" wall thickness. RP77991 ships with chrome escutcheon screws. For special finishes also order RP12630 escutcheon screws in desired finish.

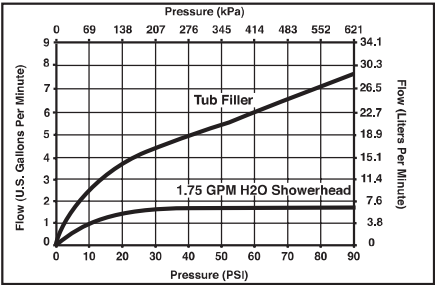
WARRANTY

- Lifetime limited warranty on parts (other than electronic parts and batteries) and finishes; or, for commercial users, for 5 years from date of purchase.
- 5 year limited warranty on electronic parts (other than batteries); or, for commercial users, for 1 year from the date of purchase. No warranty is provided on batteries.



COMPLIES WITH:

- ASME A112.18.1 / CSA B125.1
- ASSE 1016
- Indicates compliance to ICC/ANSI A117.1 - Valve control only
- EPA WaterSense®



Delta Faucet Company
55 E. 111th Street, Indianapolis, IN 46280
350 South Edgeware Road, St. Thomas, ON N5P 4L1
© 2017 Delta Faucet Company

