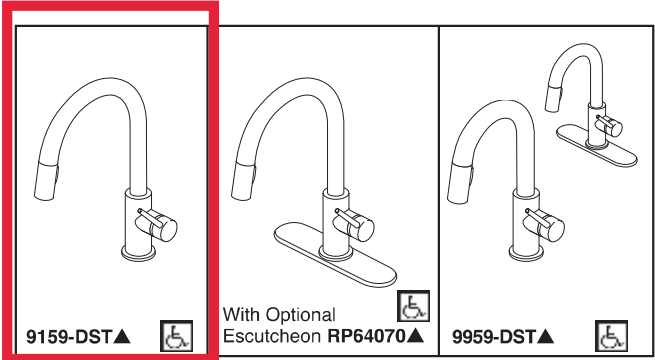
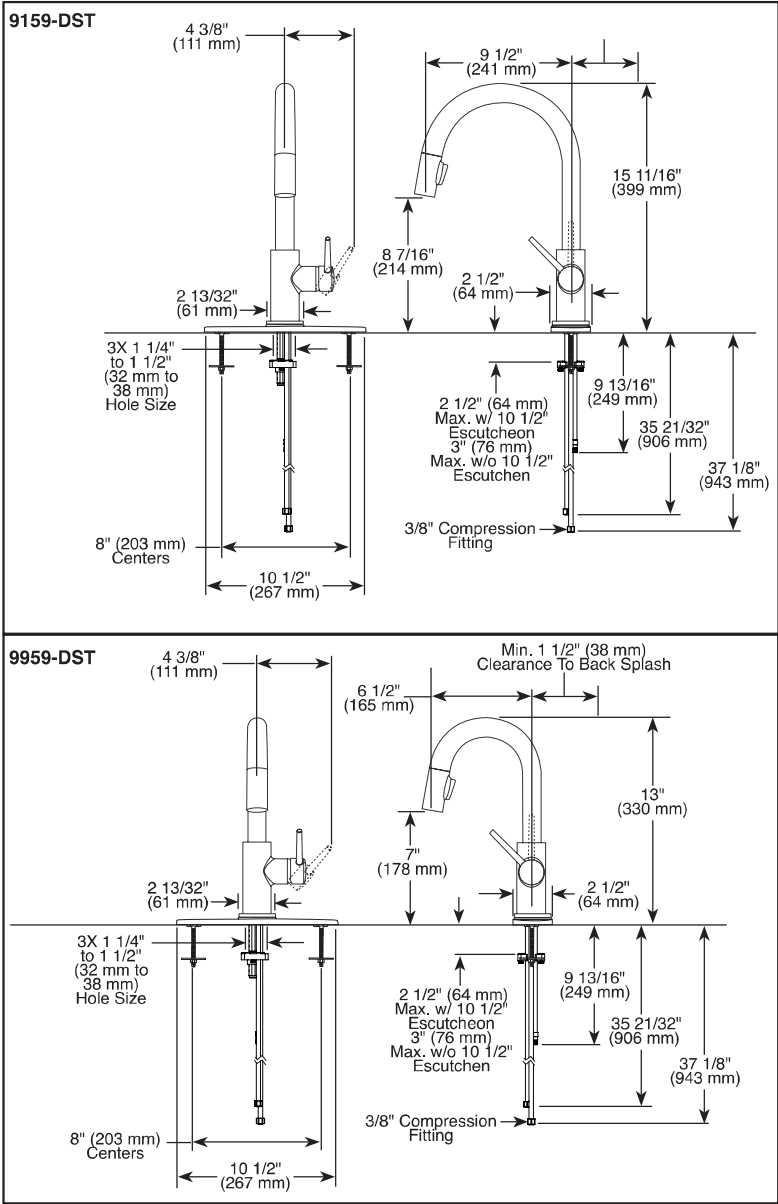


DV3 LOT 114 - KITCHEN FAUCET 9159-CZ-DST



Submitted Model No.:
Specific Features:



▲ Designate proper finish suffix

Delta reserves the right (1) to make changes in specifications and materials, and (2) to change or discontinue models, both without notice or obligation. Dimensions are for reference only. See current full-line price book or www.deltafaucet.com for finish options and product availability.

DSP-K-9159-DST Rev. F



see what Delta can do™

KITCHEN FAUCETS

- Trinsic® Collection
- Single Handle Deck Mount
- 2-Function Pull-Down Sprayer

FEATURES:

- MagnaTite® Magnetic System
- DIAMOND Seal® Technology
- Touch-Clean® Sprayhead


STANDARD SPECIFICATIONS:

- Maximum 1.8 gpm @ 60 psi, 6.8 L/min @ 414 kPa
- One or three hole mount (escutcheon optional, not included)
- Spout rotates 360°
- Control mechanism shall be full-motion valve cartridge
- Two-function wand; Aerated stream or spray
- Red/blue indicator markings
- Dual integral check valves in sprayer
- Quick connect hoses

WARRANTY

- Parts and Finish - Lifetime limited warranty; or for commercial purchasers, 10 years for multi-family residential (apartments and condominiums) and 5 years for all other commercial uses, in each case from the date of purchase.
- Electronic Parts and Batteries (if applicable) - 5 years from the date of purchase; or for commercial purchasers, 1 year from the date of purchase. No warranty is provided on batteries.

COMPLIES WITH:

- ASME A112.18.1 / CSA B125.1
- ASME A112.18.6
-  Indicates compliance to ICC/ANSI A117.1
- Verified compliant with .25% weighted average Pb content regulations.

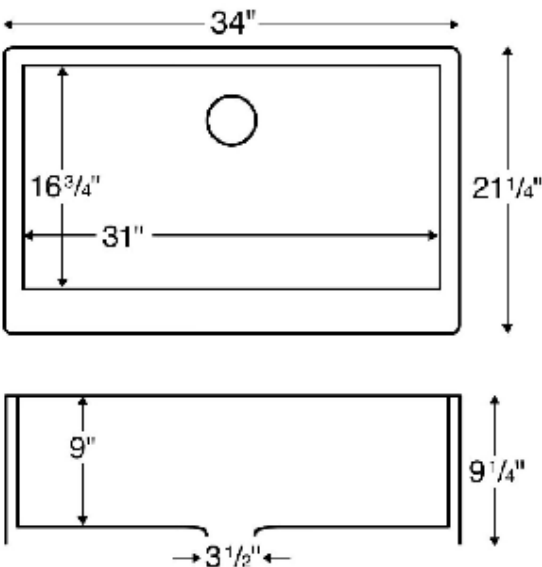
Delta Faucet Company
55 E. 111th Street, Indianapolis, IN 46280
350 South Edgeware Road, St. Thomas, ON N5P 4L1
© 2019 Delta Faucet Company



DV3 LOT 114 - KITCHEN SINK B354

Product Specification Sheet

Virtuo Granite Farmhouse/Apron Single Bowl Kitchen Sink
B354 - B356 - B358



Colour Finish	Model No.	Description
Ultra White	B354	<ul style="list-style-type: none">Large single bowl apron front/farmhouse kitchen sink.Designed to install in a 34" or wider farmhouse sink base cabinet.Made of 80% quartz and acrylic resin.Designed for undermount installation in solid surface, granite, and quartz countertops.Outside dimensions: 34" x 21-1/4" x 9-1/4".Apron height: 9-1/4"Inside bowl dimensions: 31" x 16-3/4" x 9"Rear positioned waste.Waste opening: 3-1/2".Sink bowl surface has a matte finish.Basket strainer shown is included with sink.cUPC Certified
Slate Grey	B356	
Pearl Black	B358	

Available accessories

- Matching Strainer
- Drying Rack
- BG354/356/358 - Stainless Steel Grid



MAIN LOCATION

BRISTOL SINKS
56 Firestone Blvd
London, Ontario
N5W 6E6

WESTERN LOCATION

BRISTOL SINKS
964 72nd Avenue NE
Calgary, Alberta
T2E 8V9

CONTACT

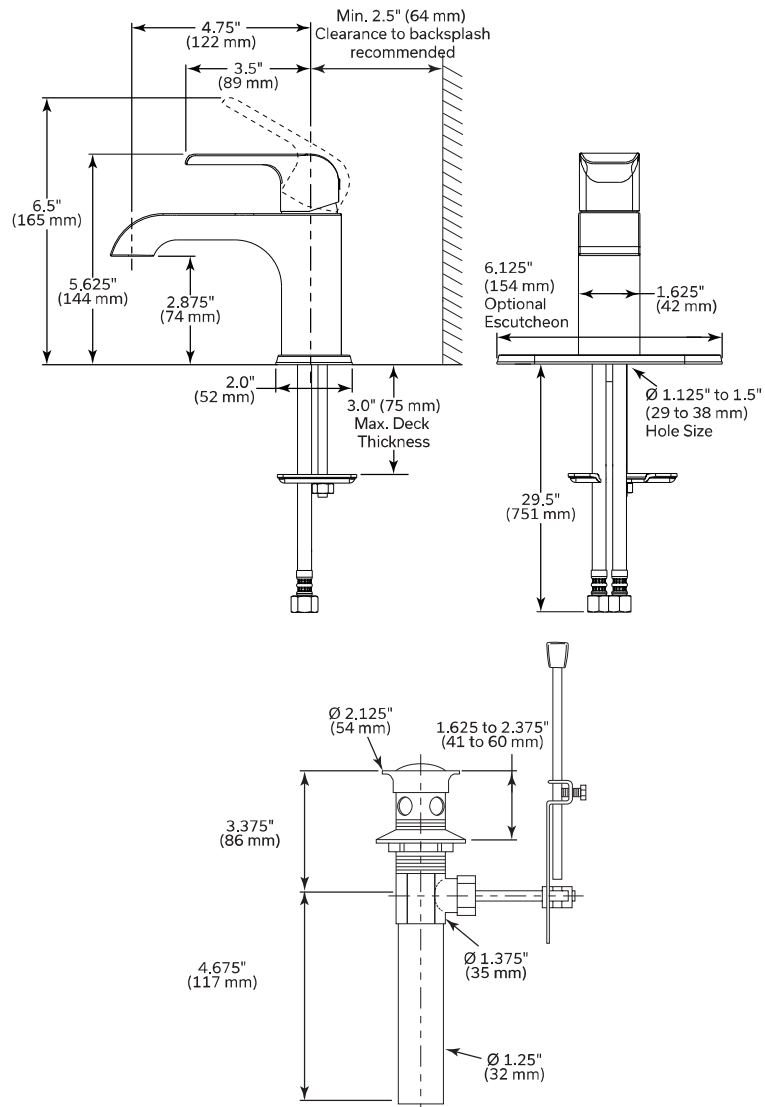
Tel: 1(800) 930-0214
Fax: 1(866) 310-7580
Email: sales@bristolsinks.com



DV3 LOT 114 - MAIN BATHROOM VANITY
FAUCET 563LF-BL



SUBMITTED MODEL NO.: _____
SPECIFIC FEATURES: _____



LAVATORY FAUCETS

- ☐ Kitano™ Collection
- ☐ Single Handle Deck Mount

- STANDARD SPECIFICATIONS:**
- Max flow rate 1.2 gpm (4.5 L/min) (Aerated pressure compensating)
 - Standard single hole mount or three hole mount with optional - 6.125" (154 mm) Escutcheon (sold seperately)
 - Poly-braided supply lines
 - 3.0" (75 mm) max. deck thickness
 - Ceramic cartridge
 - Hot-Cold indicator
 - Metal lever handle
 - Solid brass body
 - 29.5" (751 mm) long flexible supply lines with 9/16" supply fittings
 - Rigid Spout
 - Models have 50/50 drain with pop-up type fitting with plated flange and stopper
 - "-LPU" models are supplied less the 50/50 drain with pop-up type fitting with plated flange and stopper

- OPTIONAL ACCESSORIES (sold seperately)**
- RP100784▲ - 6-1/8" (154 mm) escutcheon
 - 33W576▲ - push pop-up with overflow holes



- COMPLIES WITH**
- ASME A112.18.1 / CSA B125.1
 - EPA WaterSense®
 - Verified compliant with 0.25% weighted average Pb content regulations
 - Indicates compliance to ICC/ANSI A117.1

▲ Designate Proper Finish Suffix
WaterSense® is a registered trademark of the U.S. Environmental Protection Agency
NOTICE Dimensions are for reference only. Measurements may vary ± 0.25" (6 mm)

Delta Faucet Company reserves the right (1) to make changes in specifications and materials; and (2) to change or discontinue models, both without notice or obligation. See current full-line price book or www.deltafaucet.ca for finish options and product availability.

Delta Faucet Company
350 South Edgeware Road, St. Thomas, ON N5P 4L1
55 E. 111th Street, Indianapolis, IN 46280
© 2021 Delta Faucet Company

DSP-L-563LF, Rev. B

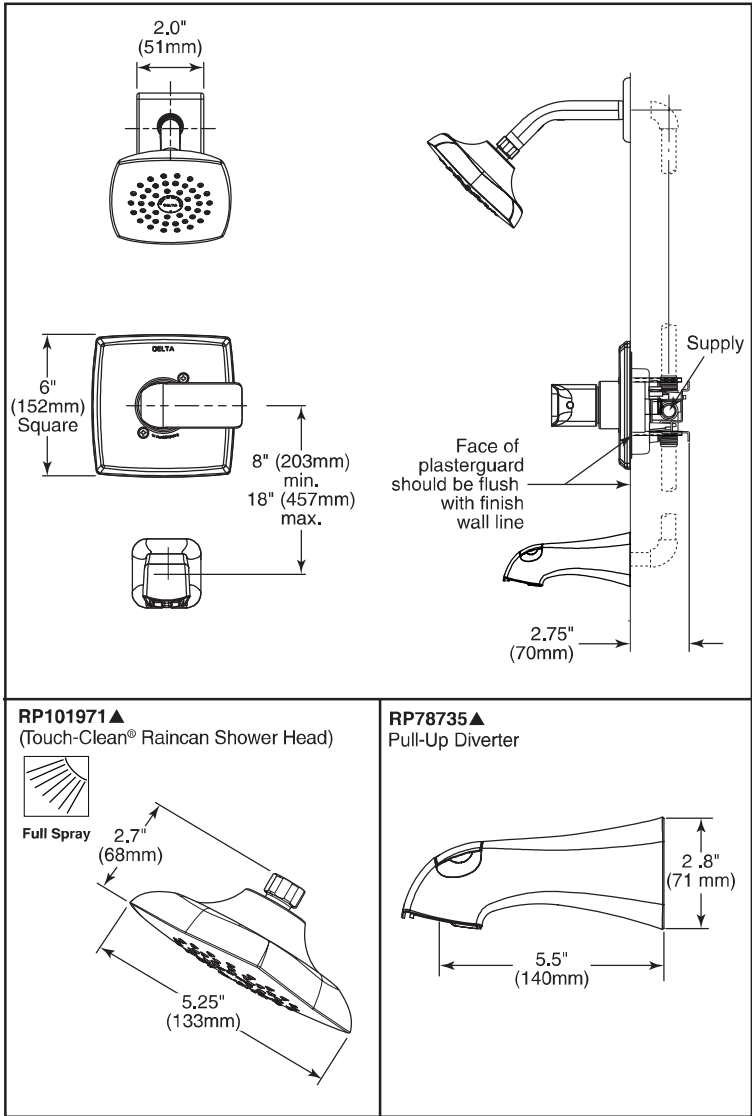


DV3 LOT 114 - MAIN BATHROOM SHOWER FIXTURE T14463



Submitted Model No.: _____

Specific Features: _____



▲ Designate Proper Finish Suffix

Delta Faucet Company reserves the right (1) to make changes in specifications and materials, and (2) to change or discontinue models, both without notice or obligation. Dimensions are for reference only. See current full-line price book or www.deltafaucet.com for finish options and product availability.

DSP-B-T14063, REV.C



see what Delta can do™

**TUB AND SHOWER
FAUCET TRIM**

- Kitano™ Bath Collection
- Valve Only (T14063)
- Shower Only (T14263)
- Tub/Shower (T14463 & T14463-LHD)

STANDARD SPECIFICATIONS:

- Monitor® 14 Series pressure balanced bath single handle mixing valve trim
- Maintains a balanced pressure of hot and cold water even when a valve is turned on or off elsewhere in the system
- For use with MultiChoice® Universal rough valve body (R10000 Series)
- Back-to-back installation capability
- Solid brass forged body
- Temperature only controlled with handle
- Red/blue temperature indicators
- Field adjustable to limit handle rotation into hot water zone
- 120° maximum handle rotation
- All parts replaceable from the front of the valve
- “-LHD” models indicate less showerhead
- Maximum 2.0 gpm @ 80 psi (7.6 L/min @ 550 kPa)

WARRANTY

- Parts and Finish - Lifetime limited warranty; or for commercial purchasers, 10 years for multi-family residential (apartments and condominiums) and 5 years for all other commercial uses, in each case from the date of purchase.
- Electronic Parts and Batteries (if applicable) - 5 years from the date of purchase; or for commercial purchasers, 1 year from the date of purchase. No warranty is provided on batteries.



COMPLIES WITH:

- ASME A112.18.1 / CSA B125.1
- ASSE 1016
- EPA WaterSense®
- Indicates compliance to ICC/ANSI A117.1

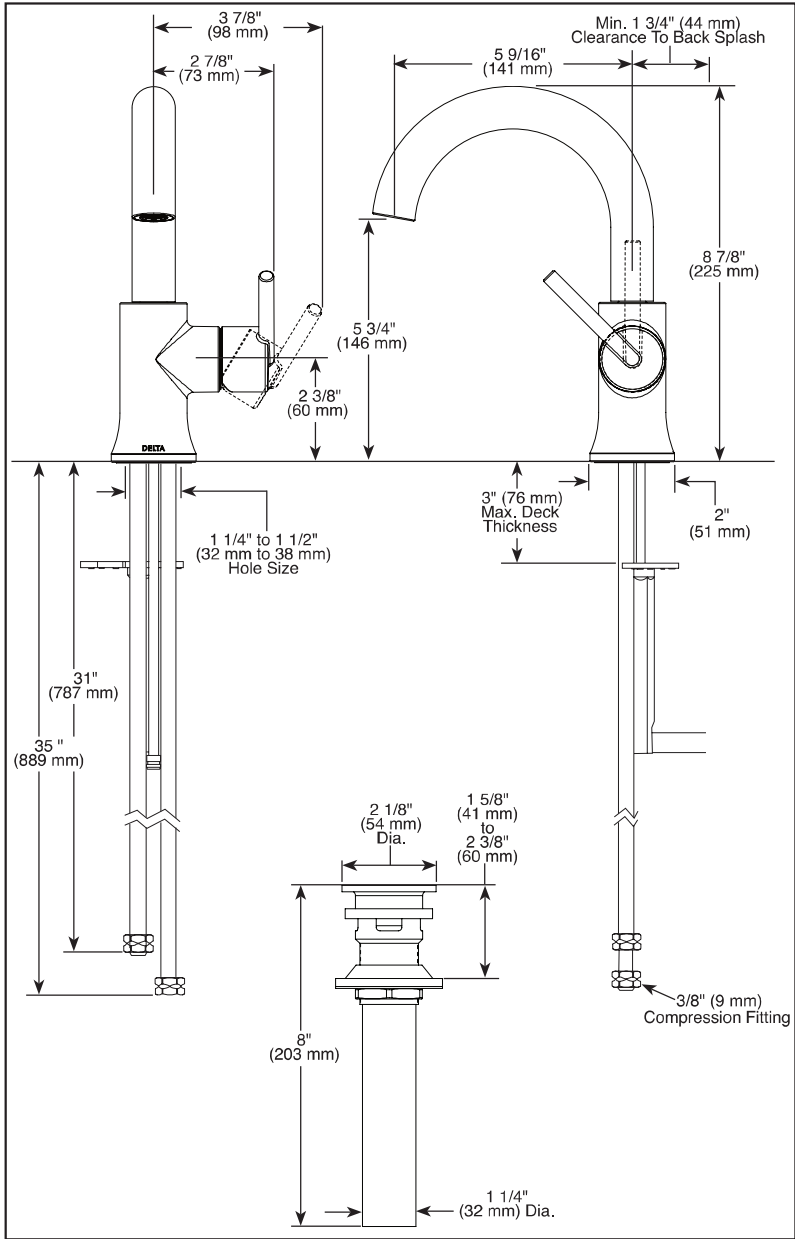
Delta Faucet Company
55 E. 111th Street, Indianapolis, IN 46280
350 South Edgeware Road, St. Thomas, CN N5P 4L1
© 2020 Delta Faucet Company



DV3 LOT 114 - PRIMARY ENSUITE VANITY FAUCET 559HA-CZ-DST



Submitted Model No.: _____
Specific Features: _____



▲ Designate Proper Finish Suffix

Delta reserves the right (1) to make changes in specifications and materials, and (2) to change or discontinue models, both without notice or obligation. Dimensions are for reference only. See current full-line price book or www.deltafaucet.com for finish options and product availability.
DSP-L-559HA-DST Rev. C



LAVATORY FAUCETS

- Trinsic® Collection
- High Arc Swivel Spout

FEATURES:

- Euro-Motion Diamond™ Valve

STANDARD SPECIFICATIONS:

- Max. 1.20 gpm @ 60 psi, 4.54 L/min @ 414 kPa (559HA-DST)
- Max. 1.00 gpm @ 60 psi, 3.80 L/min @ 414 kPa (559HA-GPM-DST)
- Single hole mount
- Spout swivels 360°
- Solid metal construction
- Diamond coated ceramic cartridge
- Red/blue indicator markings
- Models include metal push-pop drain

WARRANTY

- Lifetime limited warranty on parts (other than electronic parts and batteries) and finishes: or, for commercial users, for 5 years from date of purchase.
- 5 year limited warranty on electronic parts (other than batteries); or, for commercial users, for 1 year from the date of purchase. No warranty is provided on batteries.



COMPLIES WITH:

- ASME A112.18.1 / CSA B125.1
- ASME A112.18.2 / CSA B125.2
- Indicates compliance to ICC/ANSI A117.1
- EPA WaterSense®
- Verified compliant with .25% weighted average Pb content regulations.



55 E. 111th Street, Indianapolis, Indiana 46280
350 South Edgeware Road, St. Thomas, ON N5P 4L1
© 2016 Masco Corporation of Indiana



PRIMARY
ENSUITE
HANDSHOWER

Submitted Model No.:
Specific Features:



see what Delta can do™

PERSONAL
HAND HELD
SHOWERS

■ Touch-Clean® Nozzles

STANDARD SPECIFICATIONS:

- Maximum 2.5 gpm @ 80 psi, 9.5 L/min @ 550 kPa (57014 only)
- Maximum 1.75 gpm @ 80 psi, 6.6 L/min @ 550 kPa
- Hand held shower with one or three spray settings
- 60"-82" stretchable metal hose
- Certified dual check valves for backflow protection
- 24" (610 mm) wall bar with adjustable slide (allows for adjustable shower height) - 57014, 57021, 57051 and 57085 only. Not to be used as a Grab Bar. Not ADA compliant
- Wall mount bracket - 55013, 55020, 55021, 55051 and 55085 only

WARRANTY

- Lifetime limited warranty on parts (other than electronic parts and batteries) and finishes; or, for commercial users, for 5 years from date of purchase.
- 5 year limited warranty on electronic parts (other than batteries); or, for commercial users, for 1 year from the date of purchase. No warranty is provided on batteries.

COMPLIES WITH:

- ASME A112.18.1/CSA B125.1 ♦
- EPA WaterSense®

<p>57014▲ 2.5 GPM</p> <p>24" (610mm)</p> <p>60"-82" (1524 mm-2083 mm)</p> <p>Full Body Spray</p> <p>Massage Spray</p> <p>Soft Drench Spray</p> <p>Accepts 1/2" - 14 NPSM Male</p>	<p>57021▲ 1.75 GPM</p> <p>24" (610mm)</p> <p>60"-82" (1524 mm-2083 mm)</p> <p>Full Body Spray</p> <p>Massage Spray</p> <p>Soft Drench Spray</p> <p>Accepts 1/2" - 14 NPSM Male</p>	<p>57051▲ 1.75 GPM</p> <p>25 3/4" (654 mm)</p> <p>60"-82" (1524 mm-2083 mm)</p> <p>Full Body Spray</p> <p>Accepts 1/2" - 14 NPSM Male</p>
<p>57085▲ 1.75 GPM</p> <p>24" (610mm)</p> <p>60"-82" (1524 mm-2083 mm)</p> <p>Full Body Spray</p> <p>Accepts 1/2" - 14 NPSM Male</p>	<p>55013▲ 1.75 GPM</p> <p>2 1/4" (57 mm)</p> <p>4" (102 mm)</p> <p>60"-82" (1524 mm-2083 mm)</p> <p>Full Body Spray</p> <p>Accepts 1/2" - 14 NPSM Male</p>	<p>55020▲ 1.75 GPM</p> <p>2 1/4" (57 mm)</p> <p>4" (102 mm)</p> <p>60"-82" (1524 mm-2083 mm)</p> <p>Full Body Spray</p> <p>Accepts 1/2" - 14 NPSM Male</p>
<p>55021▲ 1.75 GPM</p> <p>2 1/4" (57 mm)</p> <p>4" (102 mm)</p> <p>60"-82" (1524 mm-2083 mm)</p> <p>Full Body Spray</p> <p>Massage Spray</p> <p>Soft Drench Spray</p> <p>Accepts 1/2" - 14 NPSM Male</p>	<p>55051▲ 1.75 GPM</p> <p>2 3/8" (61 mm)</p> <p>4 1/16" (104 mm)</p> <p>60"-82" (1524 mm-2083 mm)</p> <p>Full Body Spray</p> <p>Accepts 1/2" - 14 NPSM Male</p>	<p>55085▲ 1.75 GPM</p> <p>2 1/4" (57 mm)</p> <p>4" (102 mm)</p> <p>60"-82" (1524 mm-2083 mm)</p> <p>Full Body Spray</p> <p>Accepts 1/2" - 14 NPSM Male</p>

▲ Designate proper finish suffix

- ♦ Your Delta Faucet handshower incorporates a backflow protection system that has been tested to be in compliance with ASME A112.18.3 and ASME A112.18.1/CSA B125.1. It incorporates two certified check valves in series, which operate independently and are integral, non-serviceable parts of the wand assembly.

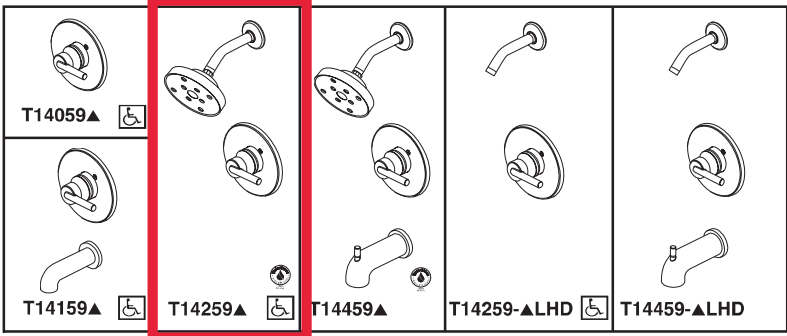
Delta reserves the right (1) to make changes in specifications and materials, and (2) to change or discontinue models, both without notice or obligation. Dimensions are for reference only. See current full-line price book or www.deltafaucet.com for finish options and product availability.

DSP-B-55021 Rev. C

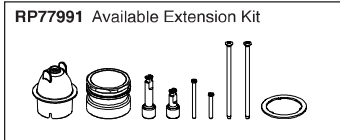
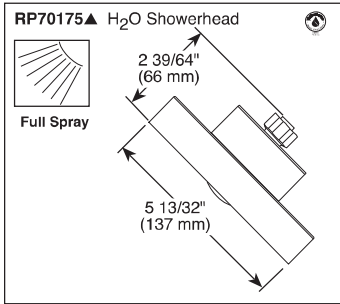
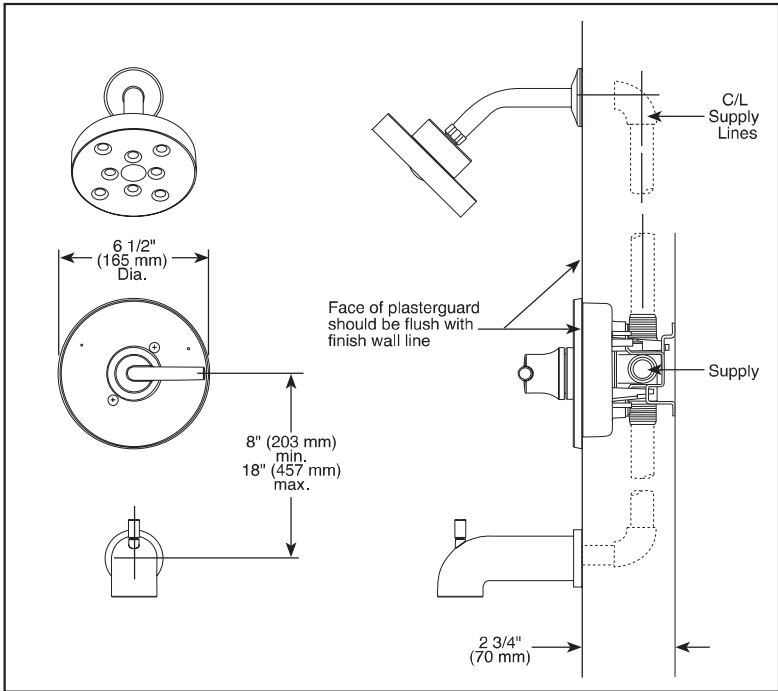
Delta Faucet Company
55 E. 111th Street, Indianapolis, IN 46280
350 South Edgeware Road, St. Thomas, ON N5P 4L1
© 2017 Delta Faucet Company



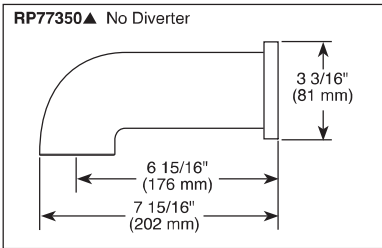
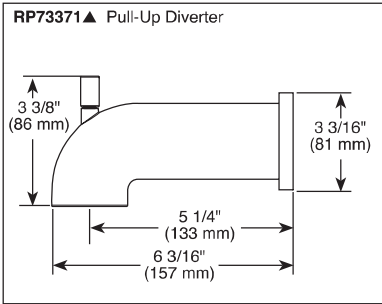
DV3 LOT 114 - PRIMARY ENSUITE SHOWER
FIXTURE T14259-CZ



Submitted Model No.: _____
Specific Features: _____



▲ Designate Proper Finish Suffix



Delta reserves the right (1) to make changes in specifications and materials, and (2) to change or discontinue models, both without notice or obligation. Dimensions are for reference only. See current full-line price book or www.deltafaucet.com for finish options and product availability.

DSP-B-T14059 Rev. K



see what Delta can do™

TUB AND SHOWER
FAUCET TRIM

- Trinsic® Bath Collection
- Valve Only (T14059)
- Tub Only (T14159)
- Shower Only (T14259)
- Tub/Shower (T14459)

FEATURES:

- Monitor® 1.4 Series pressure balanced single handle bath mixing valve trim
- Single function H₂Okinetic® Technology showerhead

STANDARD SPECIFICATIONS:

- Maintains a balanced pressure of hot and cold water even when a valve is turned on or off elsewhere in the system
- For use with MultiChoice® Universal rough valve body (R10000 Series)
- Temperature only controlled with handle
- Field adjustable means to limit handle rotation into hot water zone
- 120° maximum handle rotation
- Maximum 1.75 gpm @ 80 psi, 6.6 L/min @ 550 kPa
- Red/blue pad print temperature indicators on escutcheon
- "LHD" models indicate less showerhead
- 1/2" CWT slip-on spout adapter
- Stem extension kit RP77991 can be ordered to allow for an additional 1 3/4" wall thickness. RP77991 ships with chrome escutcheon screws. For special finishes also order RP12630 escutcheon screws in desired finish.

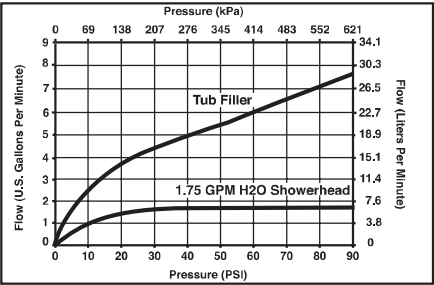
WARRANTY

- Lifetime limited warranty on parts (other than electronic parts and batteries) and finishes; or, for commercial users, for 5 years from date of purchase.
- 5 year limited warranty on electronic parts (other than batteries); or, for commercial users, for 1 year from the date of purchase. No warranty is provided on batteries.



COMPLIES WITH:

- ASME A112.18.1 / CSA B125.1
- ASSE 1016
- Indicates compliance to ICC/ANSI A117.1 - Valve control only
- EPA WaterSense®



Delta Faucet Company
55 E. 111th Street, Indianapolis, IN 46280
350 South Edgeware Road, St. Thomas, ON N5P 4L1
© 2017 Delta Faucet Company

