

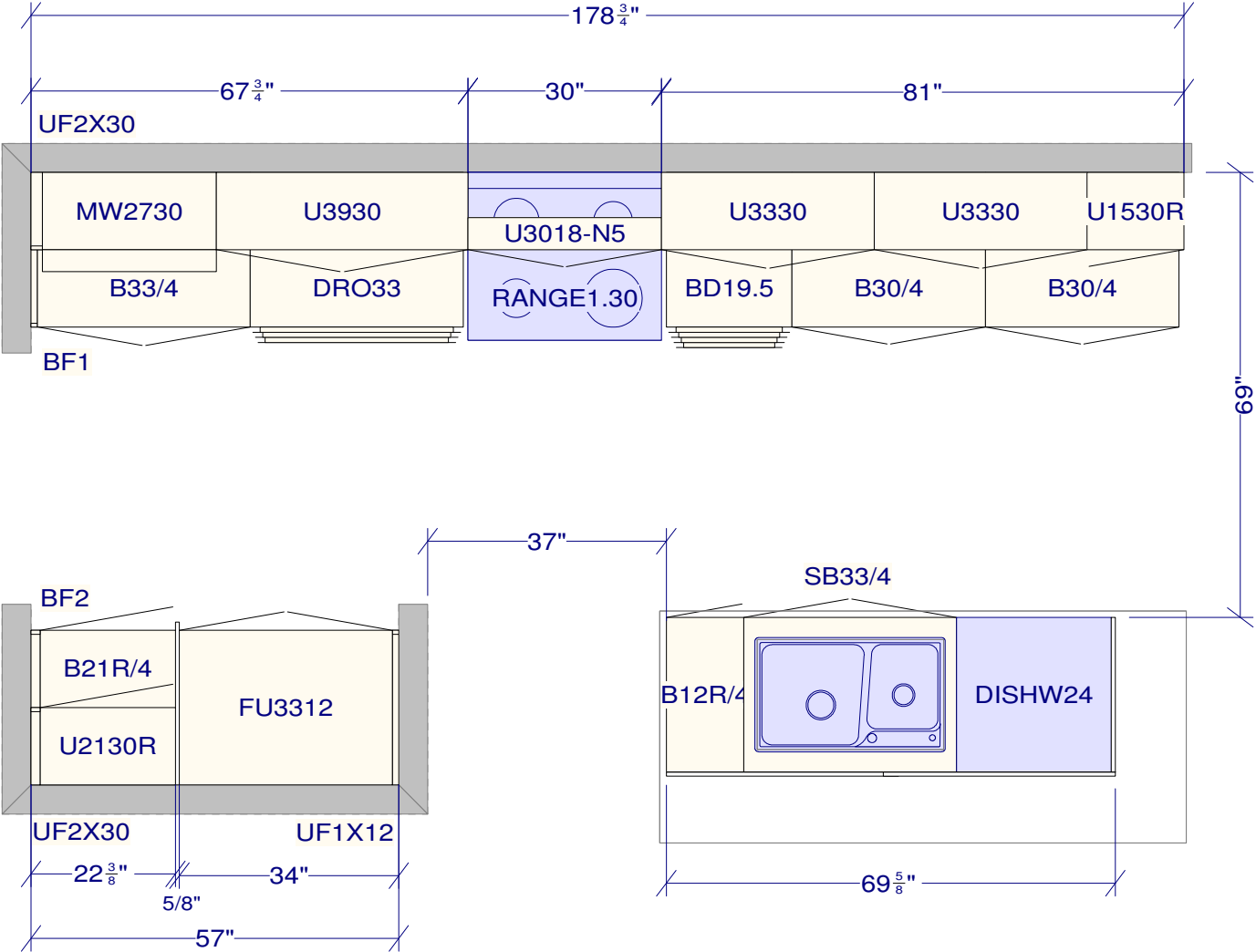
DCR PHOENIX HOMES
262 PATHWAYS PH2

KITCHEN

AS-BUILT

INSTALL COPY

JAN 18-24



All dimensions _size designations given are subject to verification on job site and adjustment to fit job conditions.	This is an original design and must not be released or copied unless applicable fee has been paid or job order placed.	Designed: 2024-01-17 Printed: 2024-01-18	
DCR 262 Pathways2 Install.kit	All	Drawing #: 1	No Scale.

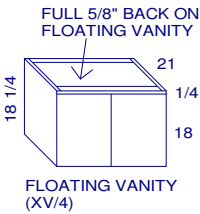
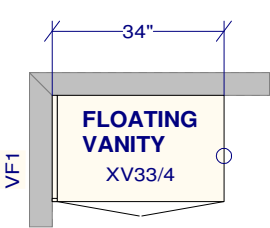
SPECTRUM KITCHENS OTTAWA

DCR PHOENIX HOMES
262 PATHWAYS PH2

MODEL - RUTHERFORD

VANITIES / LAUNDRY

MOUNTING HEIGHT - 84



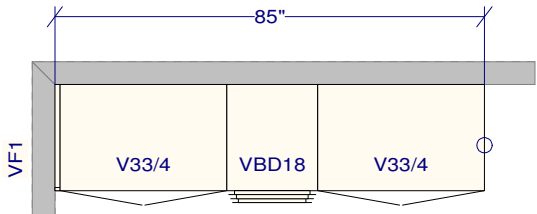
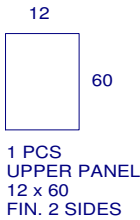
POWDER

LINE 2 - MISSION WHITE SATIN

HARDWARE - HU64

STANDARD WHITE INTERIOR

METAL DRAWER BOX



MASTER ENSUITE

LINE 2 - POLO EBONY OAK

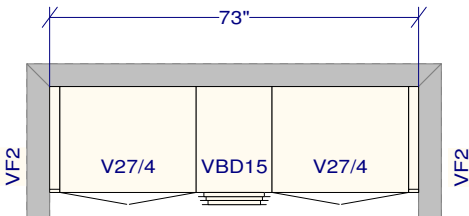
HARDWARE - HU65

STANDARD WHITE INTERIOR

METAL DRAWER BOX

1 PCS - 5/8" KICK - FIN. BOTH ENDS

2 PCS - FLAT MOULDING



JACK AND JILL

LINE 3 - MONDOLFI BLANCO ARTICO HG

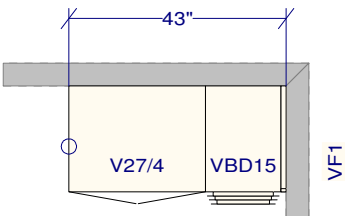
HARDWARE - HU64

STANDARD WHITE INTERIOR

METAL DRAWER BOX

1 PCS - 5/8" KICK - FIN. BOTH ENDS

2 PCS - FLAT MOULDING



ENSUITE #2

LINE 3 - MONDOLFI BLANCO ARTICO HG

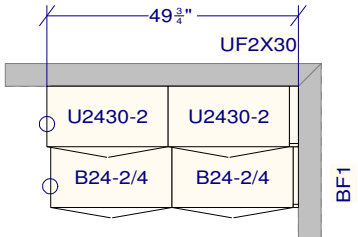
HARDWARE - HU64

STANDARD WHITE INTERIOR

METAL DRAWER BOX

1 PCS - 5/8" KICK - FIN. BOTH ENDS

1 PCS - FLAT MOULDING



LAUNDRY

LINE 2 - POLO TRUFFLE MAPLE

HARDWARE - HU64

STANDARD WHITE INTERIOR

METAL DRAWER BOX

1 PCS - 5/8" KICK - FIN. BOTH ENDS

1 PCS - FLAT MOULDING

All dimensions ,size designations given are subject to verification on job site and adjustment to fit job conditions.

This is an original design and must not be released or copied unless applicable fee has been paid or job order placed.

Designed: 2024-01-10
Printed: 2024-01-18