

SPECTRUM KITCHENS OTTAWA

DCR PHOENIX HOMES
270 PATHWAYS PH2

MODEL - WINCHESTER

KITCHEN

MOUNTING HEIGHT - 84

LINE 2 - NEW YORK WHITE SATIN

HARDWARE
- KN42 DOORS
- HN52 DRWRS

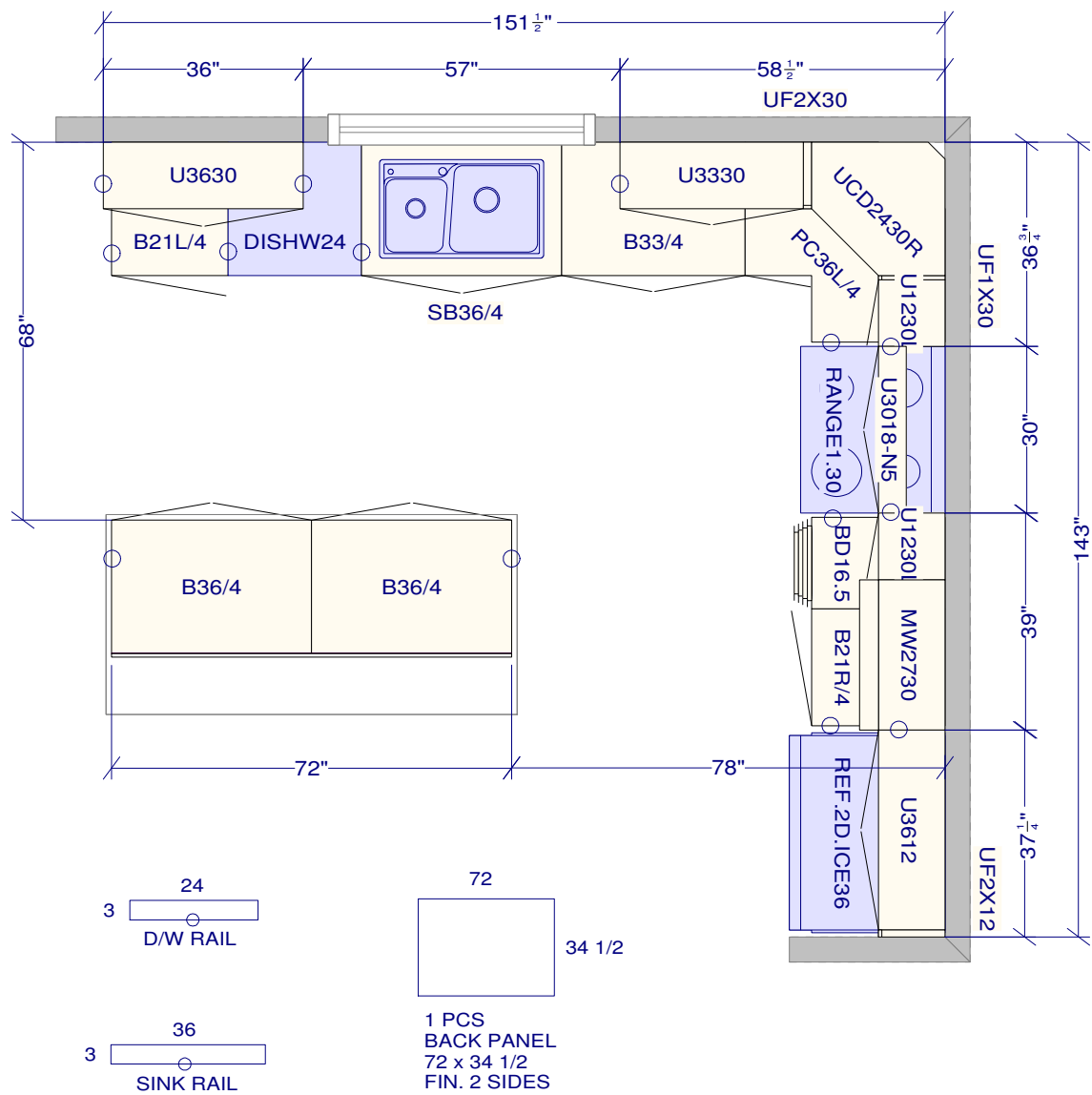
STANDARD WHITE INTERIOR

METAL DRAWER BOX

6 PCS - 5/8" KICK - FIN. BOTH ENDS

2 PCS - 90 DEG. CORNER MOULD

5 PCS - FLAT MOULDING



All dimensions ,size designations given are subject to verification on job site and adjustment to fit job conditions.

This is an original design and must not be released or copied unless applicable fee has been paid or job order placed.

Designed: 2024-02-08
Printed: 2024-02-08

SPECTRUM KITCHENS OTTAWA

DCR PHOENIX HOMES
270 PATHWAYS PH2

MODEL - WINCHESTER

VANITIES

VANITIES

LINE 2 - NEW YORK WHITE SATIN

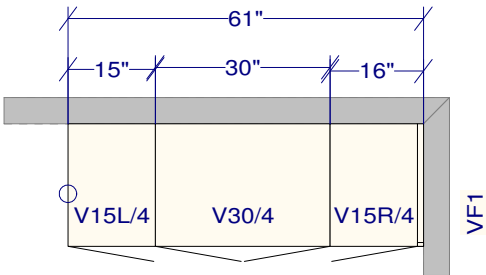
HARDWARE
- KN42 DOORS
- HN52 DRWRS

STANDARD WHITE INTERIOR

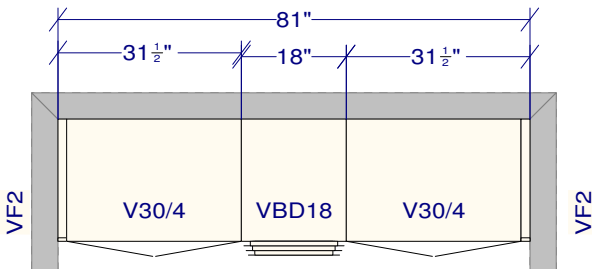
METAL DRAWER BOX

3 PCS - 5/8" KICK - FIN. BOTH ENDS

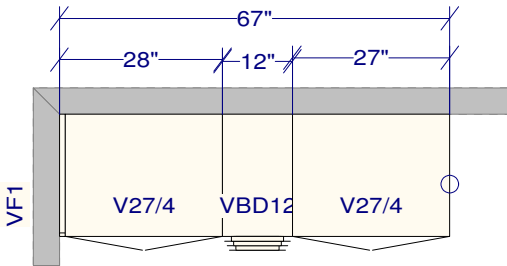
3 PCS - FLAT MOULDING



POWDER



MAIN BATH



ENSUITE

All dimensions ,size designations given are subject to verification on job site and adjustment to fit job conditions.

This is an original design and must not be released or copied unless applicable fee has been paid or job order placed.

Designed: 2024-02-08
Printed: 2024-02-08