

SPECTRUM KITCHENS OTTAWA

DCR PHOENIX HOMES
292 PATHWAYS PH2

MODEL - KLONDIKE

BASEMENT

MOUNTING HEIGHT - 84

LINE 2 - COMO ROVERE CHIOSTRO

HARDWARE - HU65

STANDARD WHITE INTERIOR

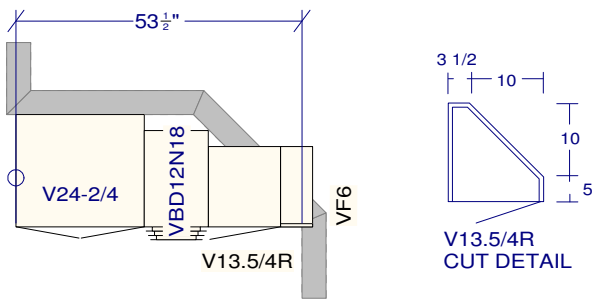
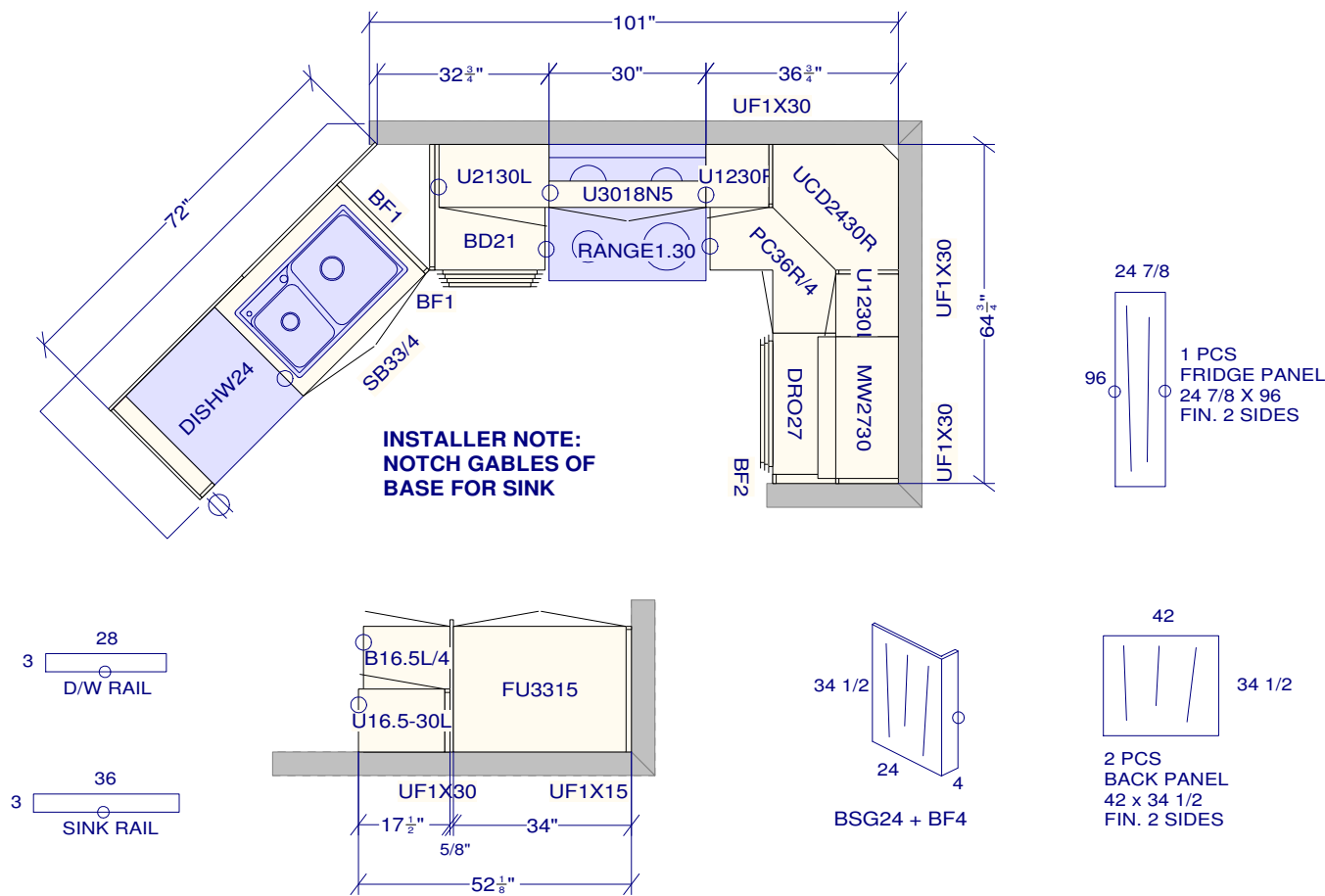
METAL DRAWER BOX

5 PCS - 5/8" KICK - FIN. BOTH ENDS

1 PCS - 90 DEG. CORNER MOULD

1 PCS - T-MOULD

5 PCS - FLAT MOULDING



BASEMENT BATH

LINE 2 - MISSION WILLOW GREY

HARDWARE - HU65

STANDARD WHITE INTERIOR

METAL DRAWER BOX

1 PCS - 5/8" KICK - FIN. BOTH ENDS

1 PCS - FLAT MOULDING

All dimensions and size designations given are subject to verification on job site and adjustment to fit job conditions.

This is an original design and must not be released or copied unless applicable fee has been paid or job order placed.

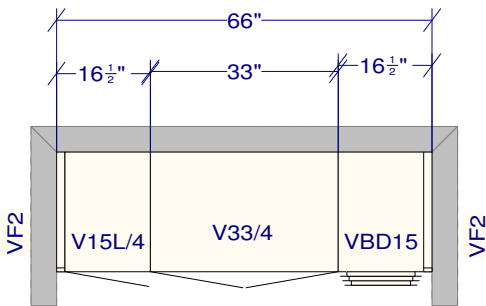
Designed: 2024-02-08
Printed: 2024-02-08

SPECTRUM KITCHENS OTTAWA

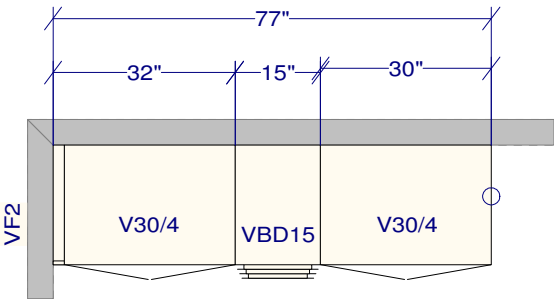
DCR PHOENIX HOMES
292 PATHWAYS PH2

MODEL - KLONDIKE

VANITIES



MAIN BATH
LINE 2 - COMO ROVERE CHIOSTRO
HARDWARE - HU65
STANDARD WHITE INTERIOR
METAL DRAWER BOX
1 PCS - 5/8" KICK - FIN. BOTH ENDS
1 PCS - FLAT MOULDING



ENSUITE
LINE 2 - MISSION WHITE SATIN
HARDWARE - HU65
STANDARD WHITE INTERIOR
METAL DRAWER BOX
1 PCS - 5/8" KICK - FIN. BOTH ENDS
1 PCS - FLAT MOULDING

All dimensions _size designations given are subject to verification on job site and adjustment to fit job conditions.	This is an original design and must not be released or copied unless applicable fee has been paid or job order placed.	Designed: 2024-02-08 Printed: 2024-02-08	
DCR 292 Pathways2 Vanities.kit	All	Drawing #: 1	No Scale.

SPECTRUM KITCHENS OTTAWA

DCR PHOENIX HOMES
292 PATHWAYS PH2

MODEL - KLONDIKE

KITCHEN

MOUNTING HEIGHT - 96

LINE 2 - POLO TRUFFLE MAPLE

HARDWARE - D3

STANDARD WHITE INTERIOR

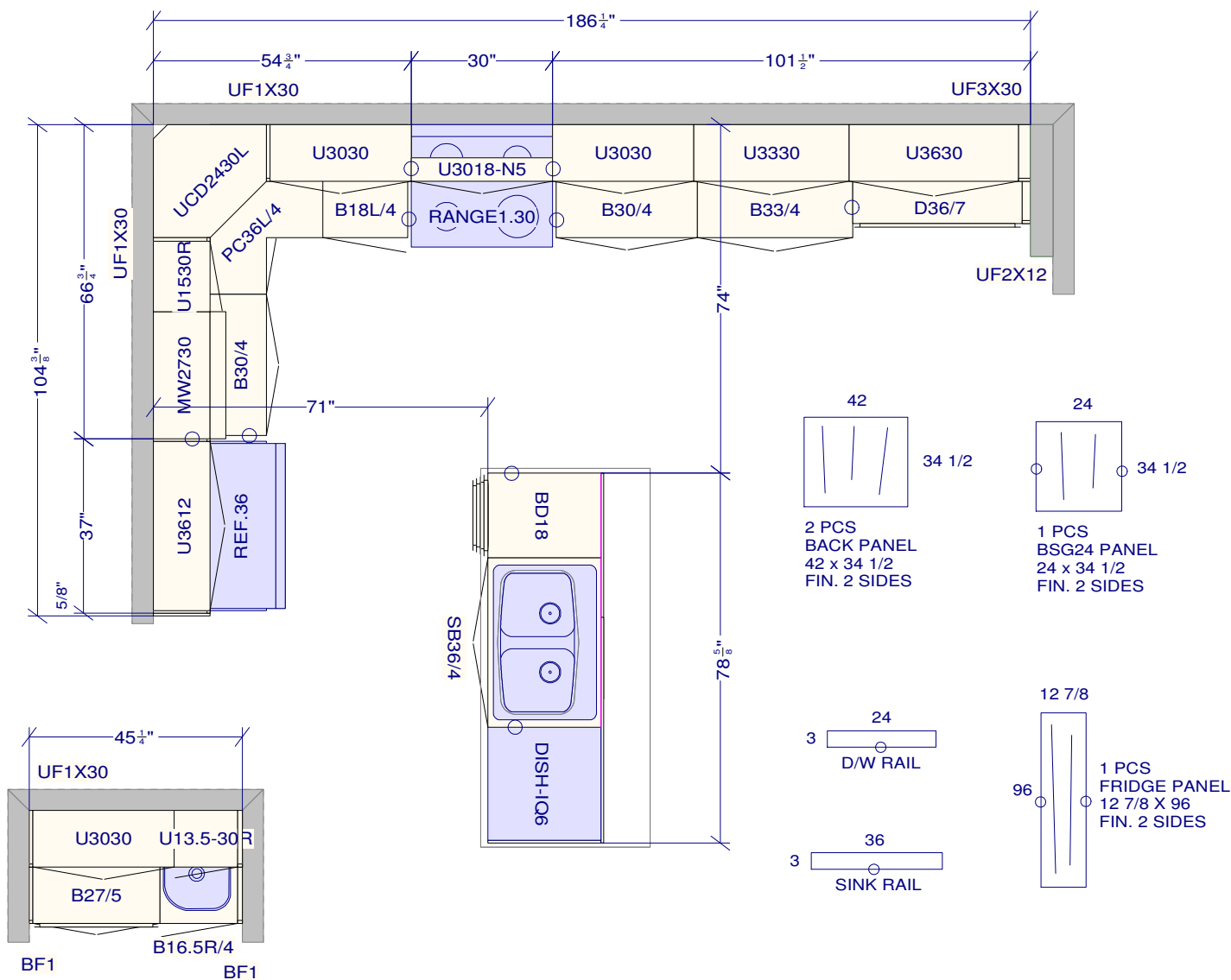
METAL DRAWER BOX

6 PCS - 5/8" KICK - FIN. BOTH ENDS

2 PCS - 90 DEG. CORNER MOULD

1 PCS - T-MOULD

5 PCS - FLAT MOULDING



All dimensions and size designations given are subject to verification on job site and adjustment to fit job conditions.

This is an original design and must not be released or copied unless applicable fee has been paid or job order placed.

Designed: 2024-02-08
Printed: 2024-02-08