

SPECTRUM KITCHENS OTTAWA

DCR PHOENIX HOMES
133 WHITE TAIL RIDGE PH3

MODEL - ANNAPOLIS

KITCHEN

MOUNTING HEIGHT - 84

LINE 2 - MISSION WILLOW GREY

HARDWARE
- PERIMETER - HU60
- ISLAND - KU60

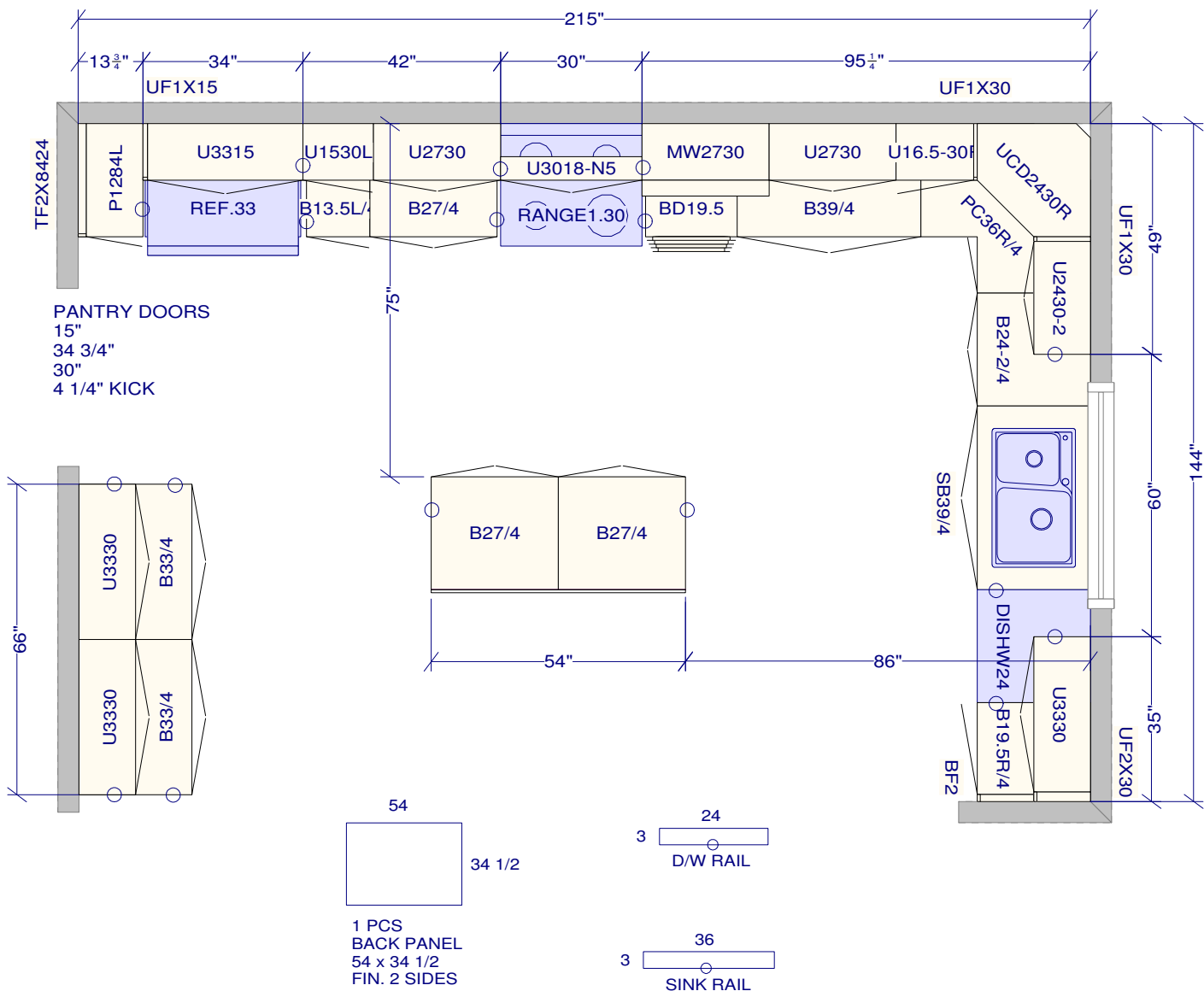
STANDARD WHITE INTERIOR

METAL DRAWER BOX

7 PCS - 5/8" KICK - FIN. BOTH ENDS

2 PCS - 90 DEG. CORNER MOULD

7 PCS - FLAT MOULDING



All dimensions _size designations given are subject to verification on job site and adjustment to fit job conditions.



This is an original design and must not be released or copied unless applicable fee has been paid or job order placed.

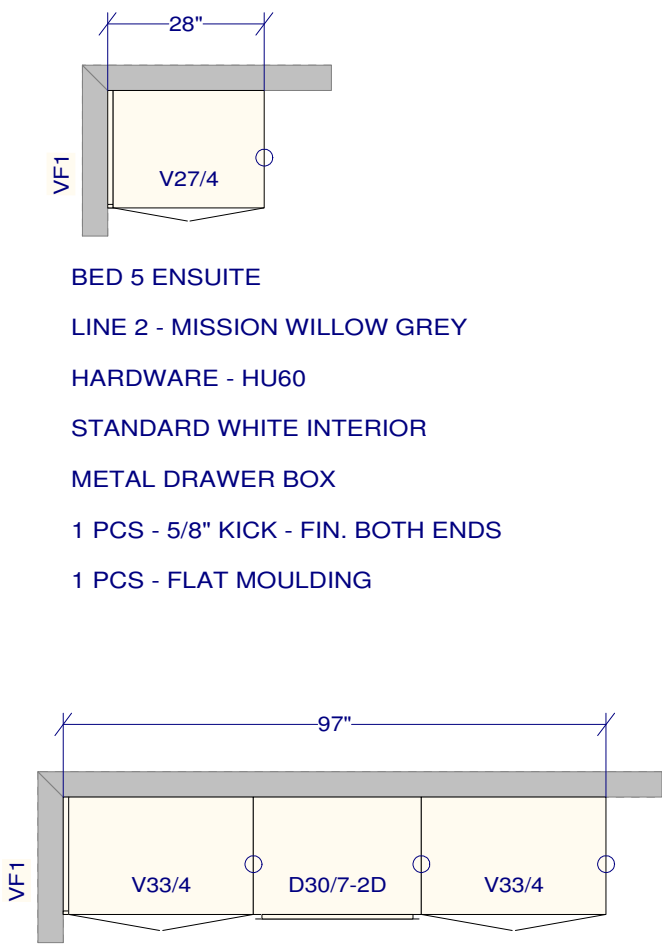
Designed: 2024-02-13
Printed: 2024-02-21

SPECTRUM KITCHENS OTTAWA

DCR PHOENIX HOMES
133 WHITE TAIL RIDGE PH3

MODEL - ANNAPOLIS

VANITIES



BED 5 ENSUITE

LINE 2 - MISSION WILLOW GREY

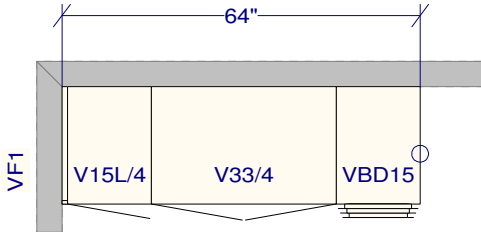
HARDWARE - HU60

STANDARD WHITE INTERIOR

METAL DRAWER BOX

1 PCS - 5/8" KICK - FIN. BOTH ENDS

1 PCS - FLAT MOULDING



ENSUITE #2

LINE 2 - MISSION WILLOW GREY

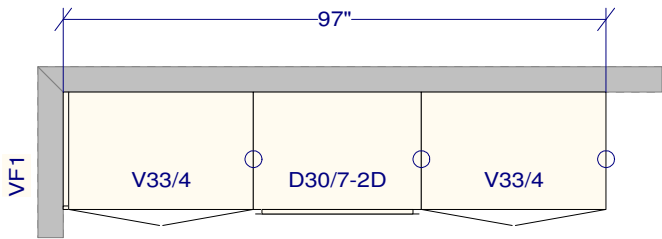
HARDWARE - HU60

STANDARD WHITE INTERIOR

METAL DRAWER BOX

1 PCS - 5/8" KICK - FIN. BOTH ENDS

1 PCS - FLAT MOULDING



MASTER ENSUITE

LINE 2 - MISSION MATTE BLACK

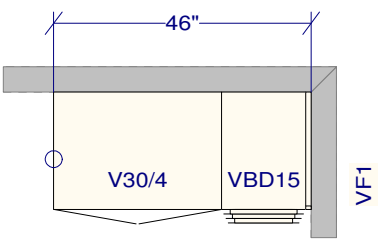
HARDWARE - HU60

STANDARD WHITE INTERIOR

METAL DRAWER BOX

1 PCS - 5/8" KICK - FIN. BOTH ENDS

2 PCS - FLAT MOULDING



MAIN (JACK AND JILL)

LINE 2 - MISSION WILLOW GREY

HARDWARE - HU60

STANDARD WHITE INTERIOR

METAL DRAWER BOX

1 PCS - 5/8" KICK - FIN. BOTH ENDS

1 PCS - FLAT MOULDING