

SPECTRUM KITCHENS OTTAWA

DCR PHOENIX HOMES
277 PATHWAYS PH2

MODEL - ANNAPOLIS

KITCHEN

MOUNTING HEIGHT - 96 + FILL TO CEILING

LINE 3 - CADIZ COCONUT WHITE

HARDWARE - D4

STANDARD WHITE INTERIOR

SOFT CLOSING DRAWERS

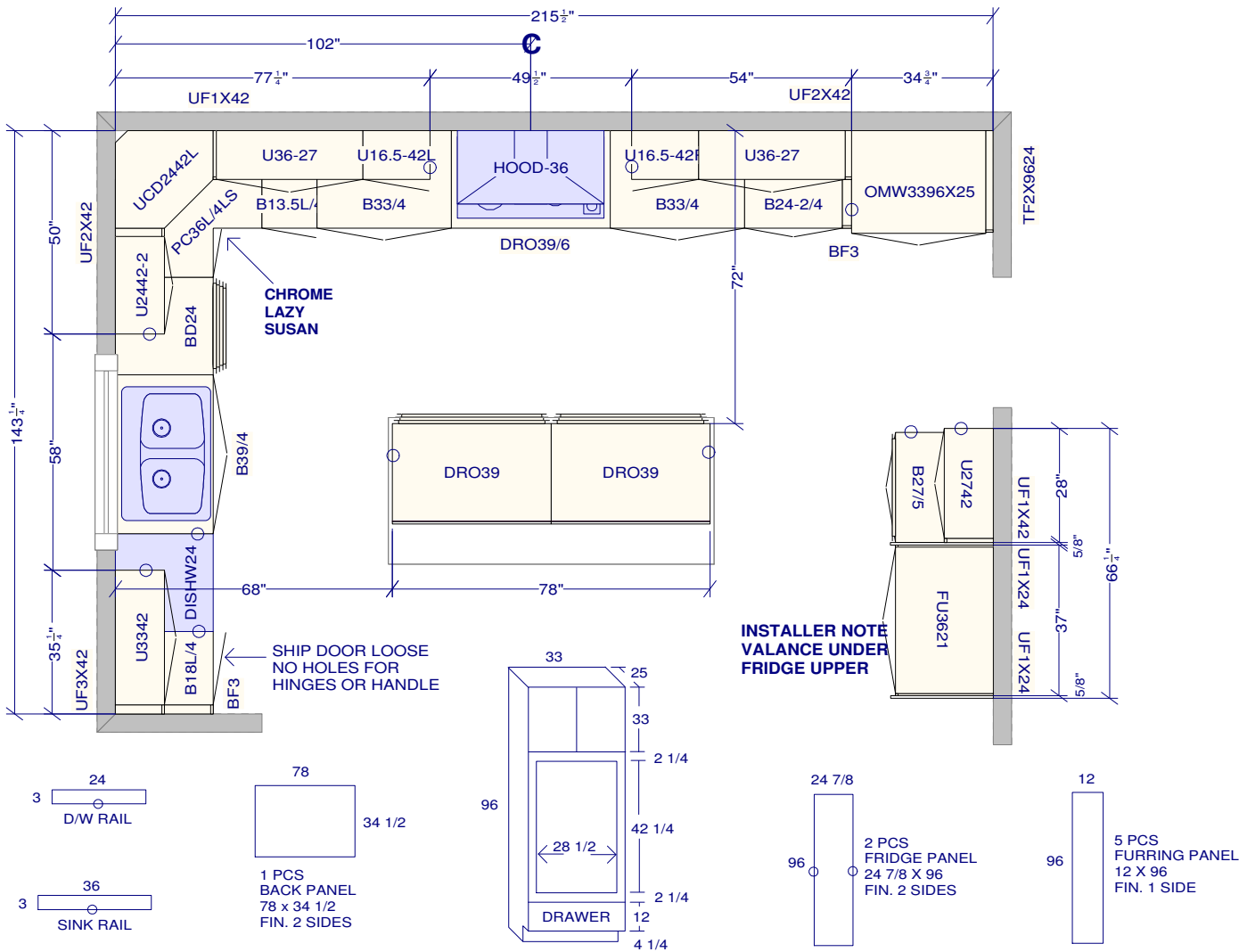
SOFT CLOSING DOORS

7 PCS - 5/8" KICK - FIN. BOTH ENDS

2 PCS - 90 DEG. CORNER MOULD

6 PCS - FLAT MOULDING

1 PCS - RECESSED VALANCE - 2" HIGH



UH3615T/GL

ALUMINUM DOORS
FROSTED GLASS
WHITE INTERIORS

AVENTOS HK LIFT-UP SYSTEM

UH3615T/GL

LINE 5 - ALUMINUM RIG6

HARDWARE - D1

STANDARD WHITE INTERIOR

SOFT CLOSING DRAWERS

SOFT CLOSING DOORS

All dimensions and size designations given are subject to verification on job site and adjustment to fit job conditions.

This is an original design and must not be released or copied unless applicable fee has been paid or job order placed.

Designed: 2024-03-11
Printed: 2024-03-26

SPECTRUM KITCHENS OTTAWA

DCR PHOENIX HOMES
277 PATHWAYS PH2

MODEL - ANNAPOLIS

VANITIES

LINE 2 - METRO WHITE

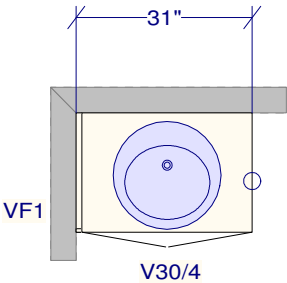
HARDWARE - C7

STANDARD WHITE INTERIOR

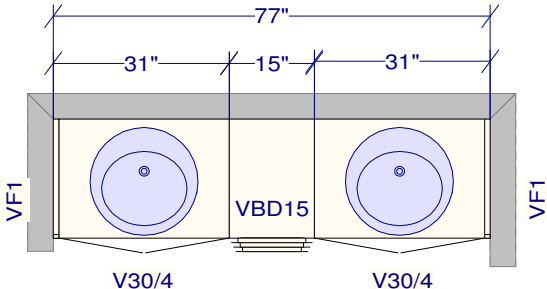
METAL DRAWER BOX

4 PCS - 5/8" KICK - FIN. BOTH ENDS

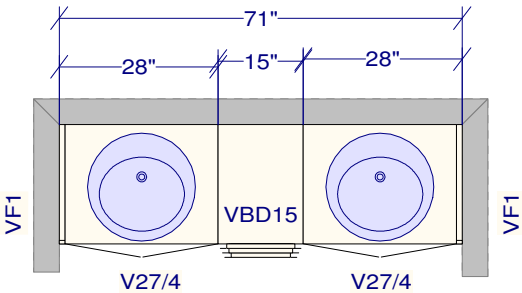
5 PCS - FLAT MOULDING



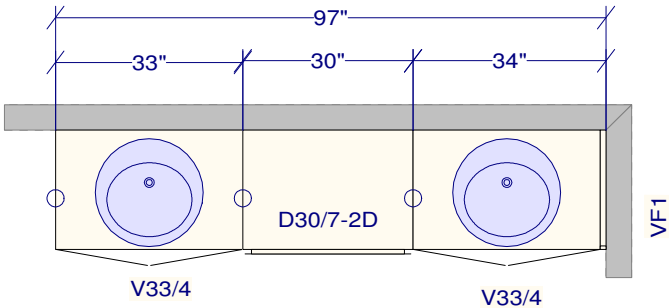
POWDER



ENSUITE #2



MAIN (SHARED) BATH



MASTER ENSUITE

All dimensions ,size designations given are subject to verification on job site and adjustment to fit job conditions.

This is an original design and must not be released or copied unless applicable fee has been paid or job order placed.

Designed: 2024-03-11
Printed: 2024-03-26