

36" 5-Burner Smart Gas Cooktop with 22K BTU Dual Power Burner + Griddle & Wok Grate

From \$62.50/mo for 36 mos or \$2,249.99

[ADD TO CART](#)

[Features](#) [Spec](#) [Review](#) [Support](#) [Compare](#)

[Chat with an expert](#)

Samsung.com Advantage

In-home Service

Buy Now, Pay Later

Free Delivery & Haul Away

Extended Warranty

0% FINANCING

36" 5-Burner Smart Gas Cooktop with 22K BTU Dual Power Burner + Griddle & Wok Grate

NA36N775TG/AA

4.5 (121)

Choose your colour

Colour : Black



Add Extended Warranty to your included 1-year manufacturer's warranty.

[Learn more](#)

Samsung Extended Warranty provides enhanced protection for your Samsung products

Extended Warranty - 1 year

\$149.99

Feedback

36" 5-Burner Smart Gas Cooktop with 22K BTU
Dual Power Burner + Griddle & Wok Grate

Features Spec Review Support Compare



Images (13)



From \$62.50/mo for 36 mos or \$2,249.99

ADD TO CART

Extended Warranty - 4 years	\$197.99
None	

36" 5-Burner Smart Gas Cooktop with 22K BTU Dual
Power Burner + Griddle & Wok Grate
Black

From \$62.50/mo for 36 mos or \$2,249.99

ADD TO CART

WHERE TO BUY

Compare the models

Compare with similar items



36" 5-Burner Smart Gas Cooktop with 22K BTU
Dual Power Burner + Griddle & Wok Grate

From \$62.50/mo for 36 mos or \$2,249.99

ADD TO CART

FeaturesSpecReviewSupportCompare

COOKTOP

Materials/Finishes

Model Type Install
36 inch built-in gas cooktop

Control Method
Illuminated Knobs

Power/Ratings

Total Power
59,000 BTU

Power Level
Low-Med-High

Burner - Left Front
9,500 BTU

Burner - Left Rear
9,500 BTU

Burner - Right Front
13,000 BTU

Burner - Right Rear
5,000 BTU, Precise Simmer

Burner - Center Front
22,000 BTU, Dual Brass

Power Supply
120V/60Hz, 1A



36" 5-Burner Smart Gas Cooktop with 22K BTU
Dual Power Burner + Griddle & Wok Grate

From \$62.50/mo for 36 mos or \$2,249.99

ADD TO CART

FeaturesSpecReviewSupportCompare

Cast Iron (5pcs)

Black Stainless + Enamel

Simmer/Melt

Yes

Cooktop

Number of Burner

5

Fuel Type

Natural Gas (factory set)

Accessories

WOK grate

Yes

Griddle

Cast Iron Griddle

LP Conversion Kit

Yes

Smart

WiFi Embedded

Yes

Auto Connectivity (with Hood)

Yes

Bluetooth

Yes

WiFi Dongle(Separate sale) Support

No



36" 5-Burner Smart Gas Cooktop with 22K BTU
Dual Power Burner + Griddle & Wok Grate

From \$62.50/mo for 36 mos or \$2,249.99 [ADD TO CART](#)

[Features](#) [Spec](#) [Review](#) [Support](#) [Compare](#)

App Connectivity

SmartThings App Support
Yes

Weights/Dimensions

Package (WxHxD)
1,030 x 270 x 650 mm

Cutout (WxHxD)
W 860.4 x D 485.8 mm

Net Size (W x H x D) (inch/mm)
914.4 x 139.7 x 568 mm

Shipping Weight (lbs/kg)
43.7 kg

Net Weight (lbs/kg)
39.8kg (87.7lbs)

Loading Quantity (20/40ft)
152/328

★★★★★ 4.5 (121) [Write a review](#)

★★★★★ 4.5 | [121 Reviews](#)

84 out of 99 (85%) reviewers recommend this product

Hide All Specs ^

Search topics and reviews



Reviews

[WRITE A REVIEW](#)



1/10

NEW

0

WCEP6427F

1.7/4.7 cu. ft. Smart
Combination Wall Oven with
InstaView®, True Convection,
Air Fry, and Steam Sous Vide

★★★★★ Write a review

Key Features

- ThinQ® Smart Technology
- 1.7 cu ft. TurboCook Speed Oven with Infrared Heating™
- True Convection with Air Fry

[Show More](#)

Product Price (WCEP6427F)	\$5299.00
------------------------------	-----------

Total \$5299.00

WHERE TO BUY

ADD TO COMPARE

OVERVIEW

SPECS

REVIEWS

SUPPORT

WHERE TO BUY

*Participating products vary. Refer to ThinQ® app for details.

SUMMARY

CAPACITY

6.4 cu.ft. (1.7 Upper/4.7 Lower)

MEASUREMENTS (WXHxD)

29 3/4" x 43 13/16" x 23 3/8"

EASycLEAN®

Yes

THINQ®

Yes

SUMMARY

Series	LG	Type	Combination Wall Oven
Self + EasyClean®	Yes (10mins)		

CAPACITY

Total Capacity	6.4 (1.7 Upper / 4.7 Lower)
----------------	-----------------------------

OVEN FEATURES

Convection Type	True Convection	Convection Conversion	Yes
Speed Oven	Yes	Variable cleaning time	Yes (3, 4, 5 hours)
Variable broil	Yes (Full, Center/Low, Med, High)	Variable warm	Yes (High, Med, Low)
Oven Modes	Convection Bake / Convection Roast / Bake / Broil / Steam Bake /Steam Roast / Steam Sous-Vide / Air Fry / Frozen Meal / Warm /Proof / Favourite / Self Clean / EasyClean® / Descaling / Drying	Output (Watts) Microwave	950W
Convection (Watt)	1500W	Oven Cooking System	Yes
Oven Cleaning Type	EasyClean® and Self Clean	InstaView®	Yes (Lower Oven Only)
Air fry	Yes (Upper & Lower Oven)	Steam Cooking	Yes (Lower Oven Only)

UPPER OVEN FEATURES

Broil element	1200W	Bake element	375W
---------------	-------	--------------	------

Speed cook	Yes	Speed cook - # of Defrost (4 Menu)	Meat / Poultry / Fish / Bread
Speed cook - # of Sensor cook (9 Menu)	Beverage / Casserole / Chicken / Pasta / Pizza / Dinner Plate / Rice / Soup / Vegetable	Speed cook - # of Auto cook (28 Menu)	Bacon / Bagels / Baked Potatoe / Brownie / Canned Vegetable / Cod filets / Corn Dog / Fresh Vegetable / Frozen Chicken Wings / Frozen Fries / Frozen Chicken Nuggets / Frozen Pizza / FrozenSoft Pretzels / Frozen Vegetable / Garlic Bread / Hamburger / Lamb chops / Meat Loaf / Nachos / Oatmeal / Pork Chops / Quinoa / Ribeye Steak / Rice / Salmon Steak / Sausage / SirloinSteak / Tenderloin
Speed cook - # of Soften (4 Menu)	Butter / Cream Cheese / Frosting / Ice Cream	Speed cook - # of Melt (5 Menu)	Butter / Caramel / Cheese / Chocolate / Marshmallow

LOWER OVEN FEATURES

Broil element	2,500W inner/1,500W outer	Bake element	2500W
Convection Element (Watt)	2000W	No. of Rack Positions	5

POWER/RATINGS

Amp Rating at 240V	40A	KW Rating at 240V	10.2kW
Requirements	120 / 240 VAC, 120 / 208 VAC		

APPEARANCE

All Available Colours	Smudge Resistant Stainless Steel	Handle/Knobs	Smudge Resistant Stainless Steel
Smudge Resistant Finish	Yes	Oven Door Feature	InstaView® WideView™ Window

THINQ® SMART FEATURES

ThinQ®	Yes	Check & Control	Yes
Smart Diagnosis™	Yes	Works with	Yes (Google, Alexa)
ThinQ Care	Yes	Wi-Fi Connectivity	Yes

CONTROLS

Sabbath Mode	Yes	Automatic Safety Shut-Off	Yes
Control Type	Backlit SmoothTouch® Glass Controls		

ACCESSORIES

Glass Tray(Upper)	Yes	Metal Tray(Upper)	Yes
Rack(Upper)	Yes	Temp Probe	Yes
Heavy Duty Rack	2	Air Fry Tray	Yes

DIMENSIONS/CLEARANCES/WEIGHT

Product (WxHxD)	29 3/4" x 43 13/16" x 23 3/8"	Cut-Out (WxHxD)	Standard(Min. 28 1/2" x 43 7/16" x 24" Max. 28 5/8" x 43 1/2"x 24") / Flush(30" x 44" x 25")
Shipping Dimensions (W x H x D)	33" x 50" x 30"		

WARRANTY/UPC

Parts and Labour (internal/functional parts only)	1 Year	Inverter Magnetron	10 Years
UPC	048231344326		

What people are saying

Reviews

★★★★★

BE THE FIRST TO REVIEW THIS PRODUCT

QUESTIONS? LET US HELP

View [WCEP6427E](#) Product Support



Product Registration

Get the most out of your new purchase

[LEARN MORE](#)



Manuals

Download LG product manuals and documentation

[LEARN MORE](#)



Software & Firmware

Check for LG Product software & firmware updates

[LEARN MORE](#)



1/15

NEW

0

LRYXC2606S

26 cu. ft. Counter-Depth
MAX™ French Door
Refrigerator with Four Types
of Ice

★★★★★ 5.0 (5) Write a review

Key Features

- 26 cu.ft. Counter Depth Capacity
- Pocket Handle Design with Welcome Light
- 3 Built-in Ice maker
- 4 Types of Ice
- Cool Guard™ with Premium Backlit Lighting

Show Less

SEE ALL SPECS

Choose your Color



SMUDGE RESISTANT STAINLESS STEEL

Product Price
(LRYXC2606S) **\$4199.99**

Total **\$4199.99**

WHERE TO BUY

ADD TO COMPARE



SUMMARY

CAPACITY
25.5 cu.ft.

MEASUREMENTS (WXHxD)
35 3/4" x 70 1/4" x 29 1/8"

INSTAVIEW®
Yes

THINQ®
Yes

CAPACITY

Refrigerator (cu.ft.)	16.9	Freezer (cu.ft.)	8.6
Total Capacity (cu.ft.)	25.5		

ENERGY

ENERGY STAR® Qualified	Yes	Energy Consumption (kWh/year)	699
------------------------	-----	-------------------------------	-----

WATER & ICE SYSTEM

Ice & Water Dispenser	Yes	Water Dispenser UVnano	Yes
In-door Ice Maker	Yes (1)	In-door Ice maker Ice Type	Cubed/Crushed
In-door Ice maker Daily Production	3.0/3.3(IcePlus) lbs.	In-door Ice maker Storage Capacity	3.0 lbs.
No. Freezer Ice maker	Yes (2)	Freezer Ice maker Ice Type	Craft & Mini Cubed
Freezer Ice maker Daily Production	3 or 6 ea 1.5/1.7 (IcePlus) lbs.	Freezer Ice maker Storage Capacity	27 ea/4.0 lbs.
Ice Plus	Yes	Filteration System	1 stage
Filter	LT1000P	Dispenser Light Decoration	Yes

COOLING

Compressor Type	Smart Inverter	Evaporator	Yes (1)
Multi Air Flow Cooling	Yes	Temperature Sensors	3

CONVENIENCE

Display Type	Smooth Touch Control/White LED	Temperature Controls	Electronic/Digital
Door Alarm	Yes	Child Lock	Yes
Auto Closing Door Hinge	Yes	Sabbath Mode	Yes
ADA Compliant	Yes		

REFRIGERATOR

No. of Shelves	4 Split (3 Fixed+1 Retractable)	Shelf Construction	Spill Protector/Tempered Glass
Shelf Trim	Metallic Decor	No. of Crisper Bins	2
Pantry (Glide N Serve)	Yes (Temp. Control)	CoolGuard™	Yes
Fresh Air Filter	Yes	Light	Yes
Light (Back lit lighting)	Yes		

REFRIGERATOR DOOR

No. of Bins	4 (Left Door), 4 (Right Door)	Door Shape	Flat
Handle Type	Pocket	Handle Light	Yes

FREEZER

Door Type	Pull Drawer	Drawers/Shelves	3-Tier Organization
DuraBase™ Solid Drawer Base	Yes	Freezer Light Upper	LED Lighting
Freezer Handle	SmartPull™ Handle		

SMART TECHNOLOGY

Smart Diagnosis	Yes	Wi-Fi	Yes
ThinQ®	Yes	ThinQ® Care	Yes

MATERIALS & FINISHES

Hidden Hinges	Yes	All Available Colours	Smudge Resistant Stainless Steel Smudge Resistant Black Stainless Steel
Insulation	Low GWP and Zero ODP Blowing Agent		

DIMENSIONS/CLEARANCES/WEIGHTS

Product (W x H x D)	35 3/4" x 70 1/4" x 29 1/8"	Width	35 3/4"
Height (to Top of Hinge)	70 1/4"	Depth (with Handles)	29 1/8"
Width (Door Open 90° without Handle)	40"	Width (Door Open 90° with Handle)	44 7/8"
Width (Door Fully Open without Handle)	56 3/4"	Height (to Top of Case)	68 7/8"
Depth without Door	24 3/4"	Depth without Handles	29 1/8"
Depth (to Hinge Cover)	18 1/4"	Depth (Total with Door Open)	43 5/8"
Depth (Draw Open Fully without Handle)	48 7/8"	Installation Clearance	Sides 1/8", Top 1", Back 2"
Carton Dimensions (WxHxD)	38" x 72" x 31"	Weight (Unit/Carton)	291lbs./313lbs.

LIMITED WARRANTY

Parts & Labour	1 Year	Sealed System (Parts only)	7 Years
Compressor (Parts Only)	10 Years		

UPC

1/12

NEW

2

WM6700HBA

5.8 cu. ft. Front Load Washer with AI DD™ 2.0 and LCD Knob

★★★★★ 4.8 (32) [Write a review](#)

Key Features

LCD Knob with Modern & Sleek Design

AI DD™ 2.0 with fabric and soil level sensors

ezDispense™ Automatic Dispenser

[Show More](#)

Product Price (WM6700HBA)

\$1999.99

Total \$1999.99

WHERE TO BUY

ADD TO COMPARE

OVERVIEW

SPECS

REVIEWS

SUPPORT

WHERE TO BUY

Bring a premium point of view



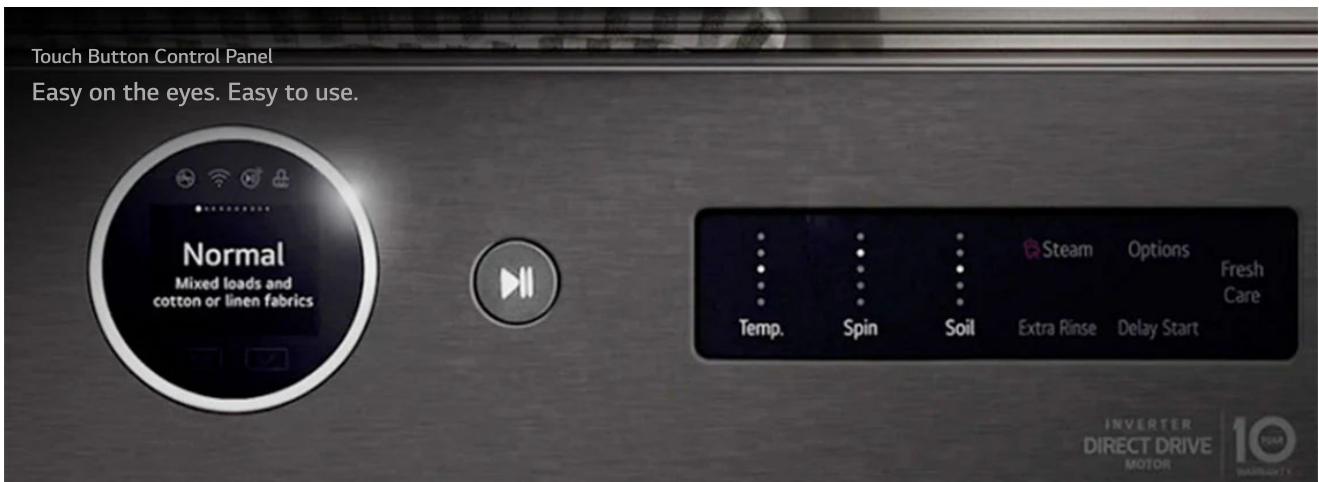
Digital Dial Control
Information at Every Turn



Sleek, Modern Style
Simply. Brilliant.



Touch Button Control Panel
Easy on the eyes. Easy to use.





*LG SideKick® Sold Separately.

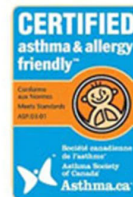
Warranty/Certifications



10 Year Warranty on
Inverter DirectDrive
Motor



ENERGY STAR®
Certified



Officially Certified by
Asthma Canada

SUMMARY

CAPACITY

5.8 cu ft

DIMENSIONS (WXHXD)

**27" x 39" x 33 1/2" (55"
D with door open)**

STEAM TECHNOLOGY

THINQ®

Yes

Yes

SUMMARY

Type	Front Load Washer	Capacity (cu.ft.)	5.8 cu ft
Matching Electric Dryer	DLEX6700B	Colour	Black Steel (B)

APPEARANCE

LCD Display	Yes	Touch Buttons	Yes
Dial-A-Cycle™	Yes		

ENERGY

ENERGY STAR® Most Efficient	Yes	ENERGY STAR® Certified	Yes
CEE Tier	Advanced Tier	IMEF	3.1
IWF	2.9		

WASH PROGRAMS

No. of Programs	25	Programs	Normal, AI Wash, Bedding, Delicates, Towels, Quick Wash, Heavy DuKids Wearty, Allergiene™, Perm.PSanitary, ress, Tub Swimwear, Clean, Bright Whites™, Rinse+SpinHand/Wool, , Spin Only, Active Wear, Kids Wear, Jeans, Dresses, Colour Care, Sweat Stains, Small Load, Large Load, X Large Load.
-----------------	----	----------	--

WASH OPTIONS

No. of Options	19	Options	TurboWash®, Steam, Fresh Care, Pre-wash, Remote Start, Delay Wash, Wi-Fi, Add Item, Extra Rinse, Control Lock, Drum Light, ColdWash™, Spin Only, Detergent Level, Softener Level, Signal, Cycle List Edit, Cycle Optimization, Softener Tank Use
----------------	----	---------	--

WASH DETAILS

No. of Wash/Rinse Temps	5	Wash/Rinse Temps	Ex. Hot / Hot / Warm / Cold / Tap Cold
-------------------------	---	------------------	--

No. of Spin Speeds	5	Spin Speeds	Ex. High / High / Medium / Low / No Spin
Max RPM	1300	Water Levels	Load Sensing
No. of Soil Levels	5		

FABRIC CARE FEATURES

AI DD™	Yes	TurboWash® 360 Technology	Yes
Steam Technology	Yes	Allergiene™ Cycle	Yes
Sanitary Cycle	Yes	ColdWash™ Option	Yes
Soil Level Sensor	Yes		

CONVENIENCE FEATURES

Vibration sensing(Cabinet Vibration sensor)	Yes	TrueBalance® Anti-Vibration System	Yes
4 Tray Dispenser	ezDispense cartridge(Detergent, Softener), Main Wash, Bleach(cup)	End of Cycle Signal	Yes
LoadSense	Yes	Control Lock	Yes
Auto Suds Removal	Yes	Leveling Legs	4 Adjustable Legs
Drumlight	Yes		

THINQ® TECHNOLOGY

ThinQ	Yes	Smart Diagnosis™	Yes
Wi-Fi	Yes	Energy Monitoring	Yes
Tub Clean Coach	Yes		

MOTOR

Motor Type	Inverter Direct Drive Motor	Axis	Horizontal
------------	-----------------------------	------	------------

MATERIALS AND FINISHES

NeveRust® Stainless Steel Drum	Yes	Cabinet	Painted Steel (One unit)
Control Panel	Painted Steel (One unit)	Top Plate	Painted Steel

Door/Rim	Glass/Chrome	Door Cover	Tempered Glass Door
All Available Colours	Black Steel (B)		

CERTIFICATION

ASC	Yes
-----	-----

POWER SOURCE

Ratings	UL Listed	Electrical Requirements	120V, 10 Amps
Type	Electric		

OPTIONS/ACCESSORIES

Pedestal	WDP6B	Pedestal (WxHxD)	27" x 13 5/8" x 28" (43 7/8" D with door open)
LG Sidekick™ Pedestal Washer	WD300CB	LG Sidekick™ Pedestal Washer (WxHxD)	27" x 14 1/8" x 30 3/4" (50 1/2 with drawer open)
Stacking Kit	KSTK4		

DIMENSIONS

Product (WxHxD)	27" x 39" x 33 1/4"	Depth with Door Open	(55" D with door open)
Carton (WxHxD)	29 3/4" x 43 1/8" x 33 7/8"	Weight (Product/Carton)	209.5 / 222.7 lbs

LIMITED WARRANTY

Parts and Labour	1 Year	Direct Drive Motor	10 Years
Drum	3 Years		

UPC CODES

WM6700HBA	195174037058
-----------	--------------

What people are saying



1/9

NEW

1

DLEX6700B

7.4 cu. ft. Ultra Large Capacity Smart Front Load Dryer with Built-In Intelligence & TurboSteam®

★★★★★ 4.3 (19) Write a review

Key Features

7.4 cu. ft. Ultra Large Capacity

TurboSteam® Technology

Built-In Intelligence (AI Fabric Sensor / Smart Pairing™ - Dryer)

[Show More](#)

Product Price
(DLEX6700B)

\$1999.99

Total \$1999.99

WHERE TO BUY

ADD TO COMPARE

OVERVIEW

SPECS

REVIEWS

SUPPORT

WHERE TO BUY



10 Year Warranty on
Inverter DirectDrive
Motor



ENERGY STAR®
Certified



Officially Certified by
Asthma Canada

DIMENSIONS



SUMMARY

CAPACITY

7.4 cu ft.

DIMENSIONS (WXHxD)

27" x 39" x 30 1/8" (51
3/8" D with door open)

STEAM TECHNOLOGY

Yes

THINQ®

Yes

SUMMARY

Series

LG

Type

Front Load Dryer

Vent Type	Vented	Dryer Type	Electric
Capacity	7.4 cu. ft.	Matching Washer	WM6700HBA
Sensor Dry	Yes	Steam	Yes
Colour	Black Steel (B)		

APPEARANCE

LCD Display	Yes	Dial-A-Cycle™	Yes
Touch Buttons	Yes		

DRYER PROGRAMS

No. of Programs	23	Programs (Sensor Dry)	Normal, AI Dry, Bedding, Delicates, Towels, Quick Dry, Timed Dry, Antibacterial, Perm.Press, SteamFresh™, Heavy Duty, Air Dry, Steam Sanitary™, Super Dry, Active Wear, Denim - > Jeans, Blanket Refresh, Low Temp Dry, Overnight Dry, Easy Ironing, Small Load, Large Load Dry, X Large Load Dry.
No. of Options	11	Options	Cycle Optimization, Damp Dry Signal, Wrinkle Care, Control Lock, Wi-Fi, Energy Saver, TurboSteam™, Reduce Static, Remote Start, Drum Light, Signal.
Temperature Settings	High, Med.High, Medium, Low, Ultra Low	Drying Levels	Very Dry, More Dry, Normal Dry, Less Dry, Damp Dry
Manual Dry Times	10 min ~ 100 min(Every 10 Min)		

FABRIC CARE FEATURES

AI Sensor Dry™	Yes	Sensor Dry	Yes
Precise Temperature Control with Variable Heater	Yes	Steam	TurboSteam™

CONVENIENCE FEATURES

3 Minute Installation Check	Yes	LoDecibel™ Quiet Operation	Yes
End of Cycle Signal	Yes	Drum Light (door open)	Yes
Reversible Door	Yes	FlowSense® Duct Clogging Indicator	Yes

Wrinkle Care Option	Yes	Control Lock	Yes
Venting Option	Electric: 4 Way Venting	4 Adjustable Legs	Yes
Remaining Time Display/Status Indicator(s)	Yes		

THINQ® TECHNOLOGY

Smart Diagnosis™	Yes	Wi-Fi	Yes
NFC Tag On Technology	Yes	Remote Start and Cycle Monitor	Yes
Energy Monitoring	Yes		

ENERGY

ENERGY STAR® Qualified	Yes	CEF	3.94
------------------------	-----	-----	------

MATERIALS AND FINISHES

NeveRust® Stainless Steel Drum	Yes	Cabinet	Painted Steel
Door	Tempered Glass Door	All Available Colours	Black Steel (B)

POWER SOURCE

Ratings	CSA Listed	Electrical Requirements	120V
Vent Type	Vented	Type	Electric

OPTIONS

Pedestal	WDP6B	Pedestal (WxHxD)	27" x 13 5/8" x 25 3/8" (43 7/8" D with door open)
----------	-------	------------------	--

DIMENSIONS

Product (WxHxD)	27" x 39" x 30 1/8"	Depth with Door Open	51 3/8"
Carton (WxHxD)	29 5/8" x 43 5/16" x 31 9/16"	Weight (Product)	123.7 lbs
Weight (Carton)	135.1 lbs		

WARRANTY

UPC CODES

DLEX6700B

772454073052

What people are saying



Reviews

WRITE A REVIEW

Rating Snapshot

Select a row below to filter reviews.

5 ★	<div></div>	14
4 ★	<div></div>	2
3 ★	<div></div>	0
2 ★	<div></div>	1
1 ★	<div></div>	2

Average Customer Ratings

Overall	<div>★★★★★</div>	4.3
Quality of Product	<div></div>	4.6
Features	<div></div>	4.6
Value	<div></div>	4.4

1–8 of 19 Reviews

Sort by: Most Recent ▾



★★★★★ UmerW · 5 days ago

Excellent dryer

Only used twice so far. But loving it. It is an excellent dryer.

Pros: ease of use, Quality, Style/Design, Features/Settings, Performance

Originally posted on LG US

Quality of Product

Features

Value

★★★★★ lkb21 · 23 days ago

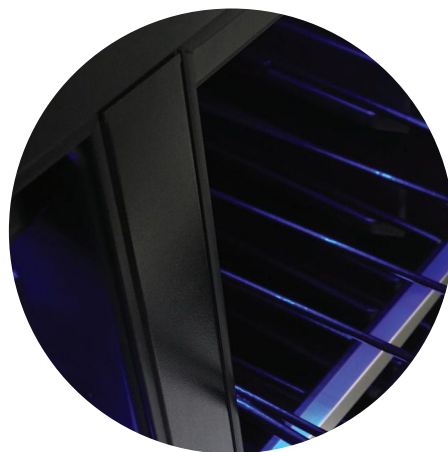
Excellent dryer

EMMENTAL

24" FRENCH DOOR BEVERAGE CENTER

Silhouette

www.silhouetteappliances.com



*Extendable shelves with
spotless steel trim*



*Modern capacitive
touch controls*

PRODUCT FEATURES



Dual Temperature Control

Strategically placed internal sensors constantly monitor and react to help create a stable internal temperature.



Frost-Free Fan Forced Cooling

Minimizes temperature stratification.



Interior Lighting

Improved interior lighting 50% brighter.

42db

Quiet operation

EMMENTAL

24" FRENCH DOOR BEVERAGE CENTER

Silhouette

www.silhouetteappliances.com

BENEFITS

Model #	SBC051D1BSS
Capacity-Wine	Up to 27 wine bottles*
Capacity-Beverage	Up to 60 beverage cans
Volume	5.1 cu. ft.
Temp Range-Wine	41°F-64°F(5°C-18°C)
Temp Range-Beverage	37°F-64°F(3°C-18°C)
Noise	42 db
Door Frame	Durable 304 grade stainless steel
Cabinet	Matte black textured steel
Interior Finish	Matte black
Door Style	French door
Reversible Door Swing	Yes
Door Hinge	Designed for flush fit installation
Door Handle	Crescent handle
Door Lock	No
Shelving	Up to 40% extension
Shelving Material-Wine	Plastic coated wire
Shelving Material-Bev	Clear glass
Wave Wine Storage	Yes
Lighting Option 1	On/Off with door opening/closing
Lighting Option 2	On 100% illumination for 60min
Lighting Option 3	On 50% illumination for 60min
Lighting Option 4	Always on
Light Colours	Blue LED display light with hi/low selection
Controls	Seamless digital controls
Temperature Recall	Yes reverts to last set temperature after power out
Alarm	Yes, temperature and door ajar

PRODUCT SPECIFICATIONS

UPC 067638023078

Unit Dimensions

Width 23.8" in.
Min. Height 34.1" in.
Max. Height 34.3" in.
Depth 23.8" in.

(DOES NOT INCLUDE HANDLE)

Installation

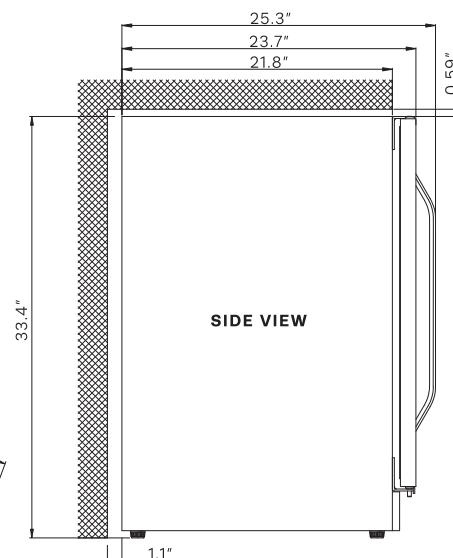
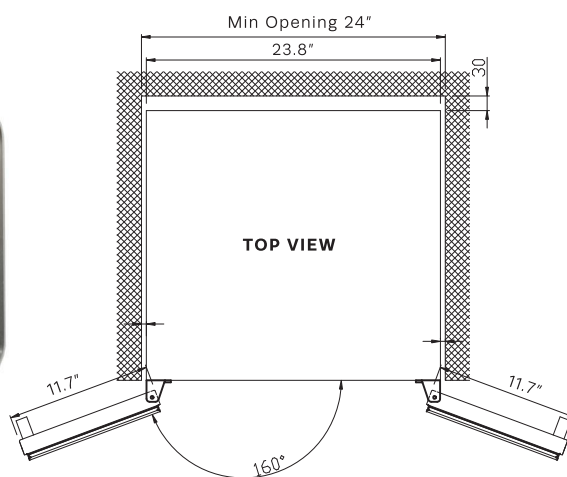
Gross Weight: 127.9 lbs.
Built-in under counter or free standing
Refrigerant: R600a
Size: Min 24" wide opening required

AC Power

115V, 60Hz at MAX 1.5A
Power cord length: 6.5 ft.

Platinum Warranty

2 year parts and labor coverage:
In home service



*based on standard 750ml
Bordeaux style bottle