

SPECTRUM KITCHENS OTTAWA

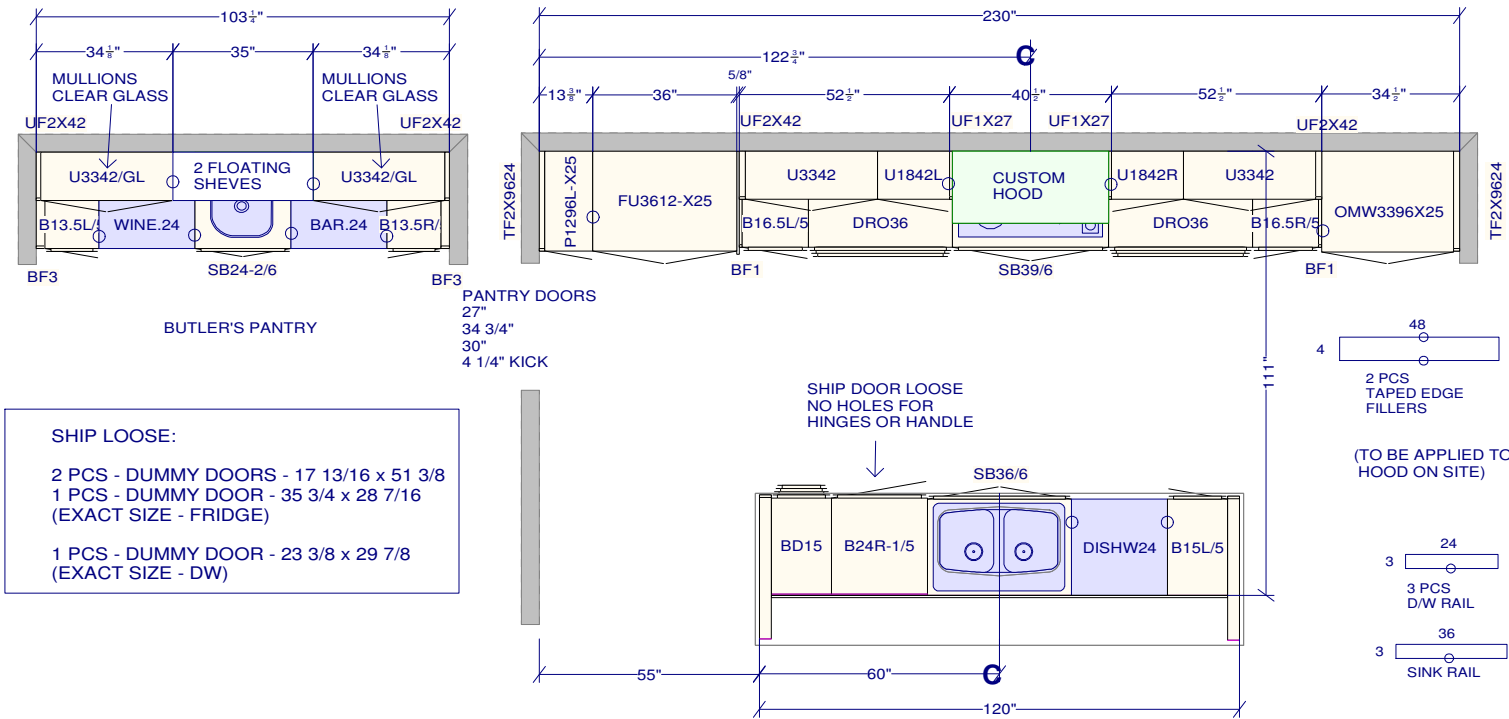
DCR PHOENIX HOMES
95 DIAMONDVIEW PH3

MODEL - NEWINGTON

KITCHEN

MOUNTING HEIGHT - 96 + FILL TO CEILING

- LINE 3 - SOHO COCONUT WHITE
- HARDWARE - UPPERS KU64 / BASES HU64
- STANDARD WHITE INTERIOR
- SOFT CLOSING DRAWERS
- 7 PCS - 5/8" KICK - FIN. BOTH ENDS
- 1 PCS - T-MOULD
- 7 PCS - FLAT MOULDING
- 6 PCS - FLUSH KICK
- 6 PCS - CEILING CROWN



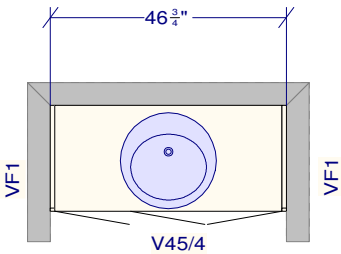
All dimensions ,size designations given are subject to verification on job site and adjustment to fit job conditions.	This is an original design and must not be released or copied unless applicable fee has been paid or job order placed.	Designed: 2024-05-08 Printed: 2024-05-15	
		Drawing #: 1	No Scale.

SPECTRUM KITCHENS OTTAWA

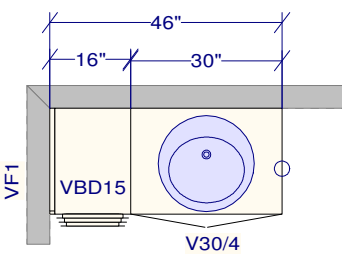
DCR PHOENIX HOMES
95 DIAMONDVIEW PH3

MODEL - NEWINGTON

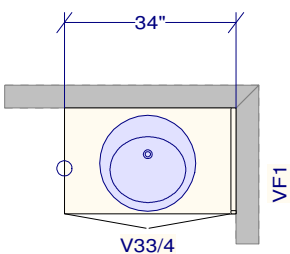
VANITIES



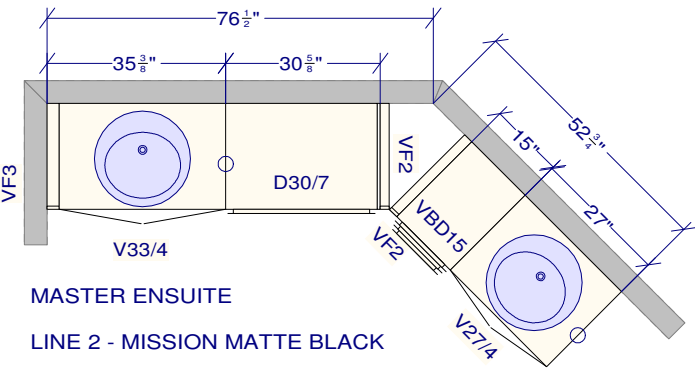
POWDER
LINE 1 - COMO WILLOW GREY
HARDWARE - HU64
STANDARD WHITE INTERIOR
SOFT CLOSING DRAWERS
SOFT CLOSING DOORS
1 PCS - 5/8" KICK - FIN. BOTH ENDS
1 PCS - FLAT MOULDING



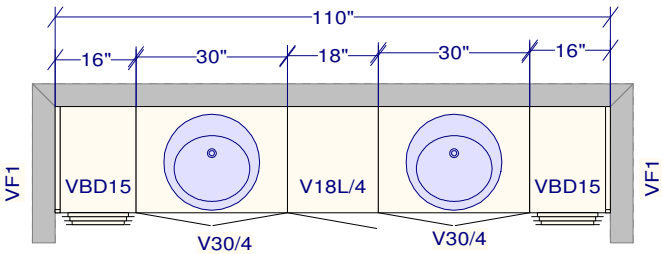
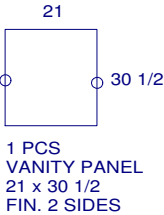
IN-LAW SUITE
LINE 1 - COMO SOLSTICE K49
HARDWARE - HU64
STANDARD WHITE INTERIOR
SOFT CLOSING DRAWERS
SOFT CLOSING DOORS
1 PCS - 5/8" KICK - FIN. BOTH ENDS
1 PCS - FLAT MOULDING



BED 4 ENSUITE
LINE 2 - POLO EBONY OAK
HARDWARE - HU64
STANDARD WHITE INTERIOR
SOFT CLOSING DRAWERS
SOFT CLOSING DOORS
1 PCS - 5/8" KICK - FIN. BOTH ENDS
1 PCS - FLAT MOULDING



MASTER ENSUITE
LINE 2 - MISSION MATTE BLACK
HARDWARE - HU60
STANDARD WHITE INTERIOR
SOFT CLOSING DRAWERS
SOFT CLOSING DOORS
2 PCS - 5/8" KICK - FIN. BOTH ENDS
2 PCS - FLAT MOULDING



MAIN (JACK AND JILL)
LINE 1 - COMO STORM
HARDWARE - HU64
STANDARD WHITE INTERIOR
SOFT CLOSING DRAWERS
SOFT CLOSING DOORS
2 PCS - 5/8" KICK - FIN. BOTH ENDS
2 PCS - FLAT MOULDING

All dimensions ,size designations
given are subject to verification on
job site and adjustment to fit job
conditions.

This is an original design and must
not be released or copied unless
applicable fee has been paid or job
order placed.

Designed: 2024-05-08
Printed: 2024-05-15

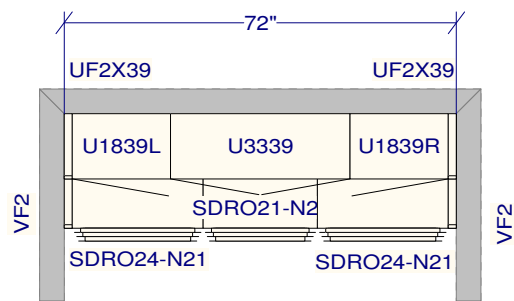
SPECTRUM KITCHENS OTTAWA

DCR PHOENIX HOMES
95 DIAMONDVIEW PH3

MODEL - NEWINGTON

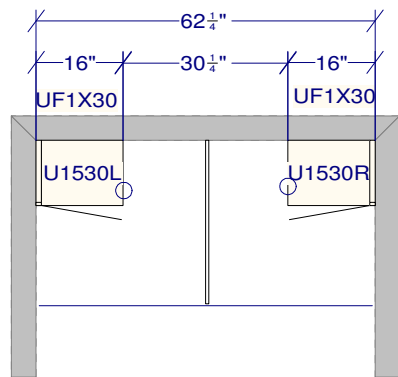
MUDROOM / LAUNDRY

MOUNTING HEIGHT - 105 / 84

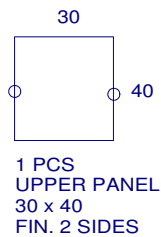


MUDROOM BENCH
(MOUNTING HEIGHT - 105
+ FILL TO CEILING)

- MUDROOM
- LINE 2 - MISSION WHITE SATIN
- HARDWARE - HU64
- STANDARD WHITE INTERIOR
- SOFT CLOSING DRAWERS
- SOFT CLOSING DOORS
- 2 PCS - 5/8" KICK - FIN. BOTH ENDS
- 1 PCS - FLAT MOULDING



LAUNDRY CLOSET
(MOUNTING HEIGHT - 84)



- LAUNDRY
- LINE 2 - MISSION WHITE SATIN
- HARDWARE - HU64
- STANDARD WHITE INTERIOR
- SOFT CLOSING DRAWERS
- SOFT CLOSING DOORS
- 2 PCS - LOOSE FILLER - 2 x 96

All dimensions ,size designations given are subject to verification on job site and adjustment to fit job conditions.	This is an original design and must not be released or copied unless applicable fee has been paid or job order placed.	Designed: 2024-05-09 Printed: 2024-05-15	
DCR 95 Diamondview3 Mud ORDER.kit	All	Drawing #: 1	No Scale.