

SPECTRUM KITCHENS OTTAWA

DCR PHOENIX HOMES  
343 PATHWAYS PH2

MODEL - MADISON

KITCHEN

MOUNTING HEIGHT - 84

LINE 2 - POLO AZTEC MAPLE

HARDWARE - HU110

STANDARD WHITE INTERIOR

SOFT CLOSING DRAWERS

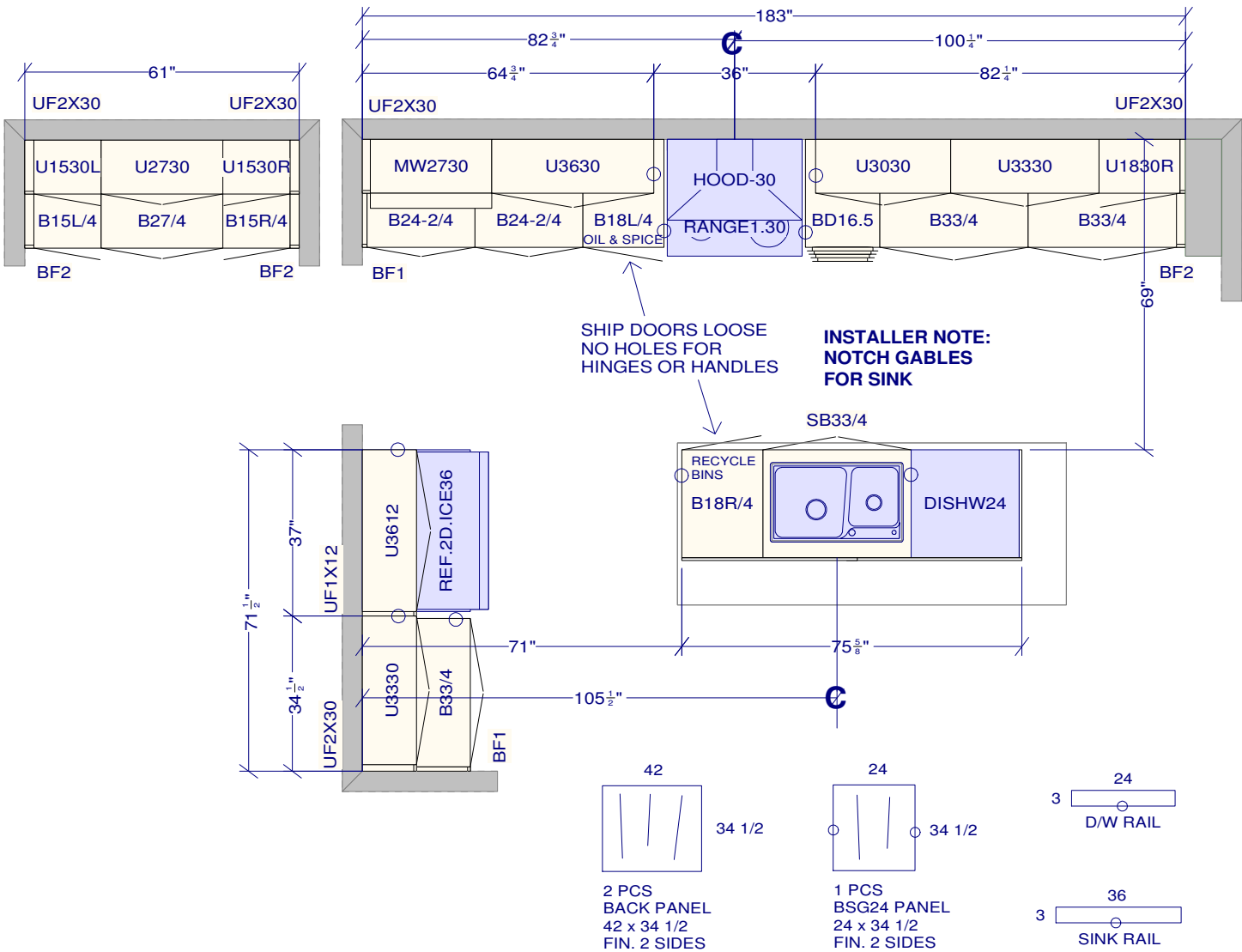
SOFT CLOSING DOORS

6 PCS - 5/8" KICK - FIN. BOTH ENDS

2 PCS - 90 DEG. CORNER MOULD

1 PCS - T-MOULD

6 PCS - FLAT MOULDING



All dimensions and size designations given are subject to verification on job site and adjustment to fit job conditions.

This is an original design and must not be released or copied unless applicable fee has been paid or job order placed.

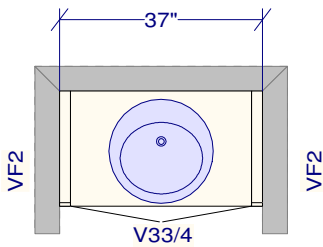
Designed: 2024-06-13  
Printed: 2024-06-24

SPECTRUM KITCHENS OTTAWA

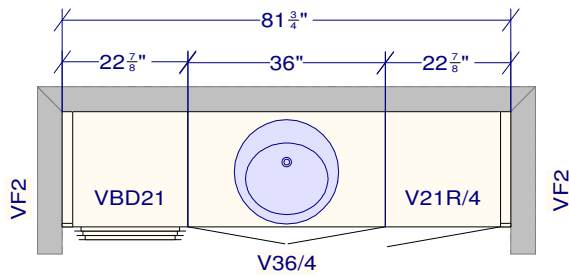
DCR PHOENIX HOMES  
343 PATHWAYS PH2

MODEL - MADISON

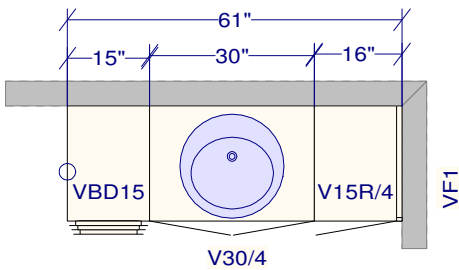
VANITIES



POWDER  
LINE 2 - POLO TRUFFLE MAPLE  
HARDWARE - HU110  
STANDARD WHITE INTERIOR  
METAL DRAWER BOX  
1 PCS - 5/8" KICK - FIN. BOTH ENDS  
1 PCS - FLAT MOULDING



MAIN BATH  
LINE 2 - POLO WENGE MAPLE  
HARDWARE - HU110  
STANDARD WHITE INTERIOR  
METAL DRAWER BOX  
1 PCS - 5/8" KICK - FIN. BOTH ENDS  
1 PCS - FLAT MOULDING



ENSUITE  
LINE 2 - POLO AZTEC MAPLE  
HARDWARE - HU110  
STANDARD WHITE INTERIOR  
METAL DRAWER BOX  
1 PCS - 5/8" KICK - FIN. BOTH ENDS  
1 PCS - FLAT MOULDING

All dimensions ,size designations  
given are subject to verification on  
job site and adjustment to fit job  
conditions.

This is an original design and must  
not be released or copied unless  
applicable fee has been paid or job  
order placed.

Designed: 2024-06-13  
Printed: 2024-06-24