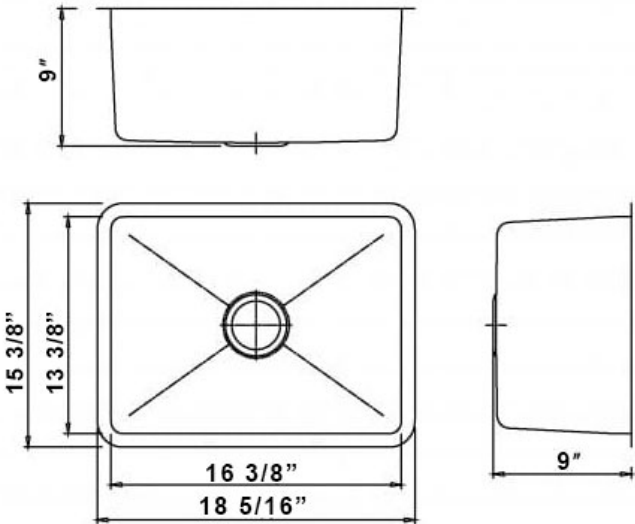


BI \$>AF %&* Ž=;F5: 7@ 4GF>7DEB3@FDK 43DE,@= 4D,EFA> 4#(#&

Product Specification Sheet

B1614 Stainless Steel Single Bowl 16 Gauge



Colour Finish
Stainless Steel

Model No.
B1614

- Description
- Double Bowl Stainless Steel Sink 16 Gauge
 - Outside dimensions: 18 5/16" x 15 3/8" x 9"
 - Minimum Cabinet Size: 20"
 - Stainless Steel Single Bowl Sink
 - 16 Gauge Type 304 Stainless Steel
 - Stone Guard undercoating over rubber pad
 - 3 1/2" drain opening
 - Supplied with installation clip, template and strainer
 - CUPC certified

Available accessories

- BG1614 - Stainless Steel Grid
- Colander Strainer - Stainless Steel
- Drying Rack



MAIN LOCATION

BRISTOL SINKS
56 Firestone Blvd
London, Ontario
N5W 6E6

WESTERN LOCATION

BRISTOL SINKS
964 72nd Avenue NE
Calgary, Alberta
T2E 8V9

CONTACT

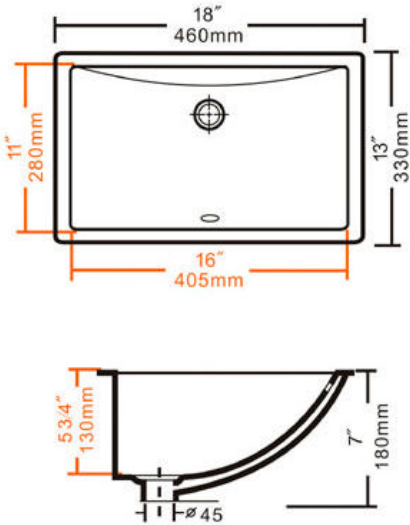
Tel: 1 (800) 930-0214
Fax: 1 (866) 310-7580
Email: sales@bristolsinks.com



STANDARD UNDERMOUNT VANITY, SINK WITH SOLID SURFACE COUNTERTOP

Product Specification Sheet

B608 Porcelain Vanity Bowl



Colour Finish
Porcelain

Model No.
B608

- Description
- White Undermount Porcelain Sink
 - Outside Dimensions 18" x 13" x 7"
 - Inside Dimensions 16" x 11" x 5-3/4"
 - Minimum Cabinet Size: 20"
 - True Vitreous China
 - Cardboard Template Included
 - Mounting Clips Included
 - Limited Lifetime Warranty
 - cUPC Certified

Available accessories

- Pop Up Drain – No Overflow (Brushed Finish)
- Pop Up Drain – No Overflow (Chrome Finish)
- Pop Up Drain – Overflow (Brushed Finish)
- Pop Up Drain – Overflow (Chrome Finish)



MAIN LOCATION

BRISTOL SINKS
56 Firestone Blvd
London, Ontario
N5W 6E6

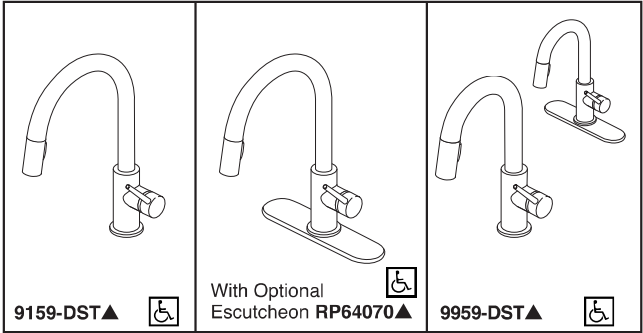
WESTERN LOCATION

BRISTOL SINKS
964 72nd Avenue NE
Calgary, Alberta
T2E 8V9

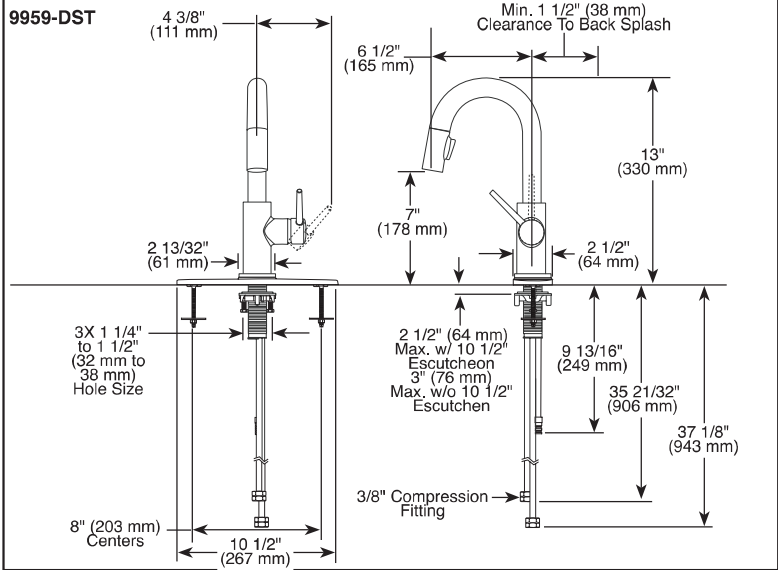
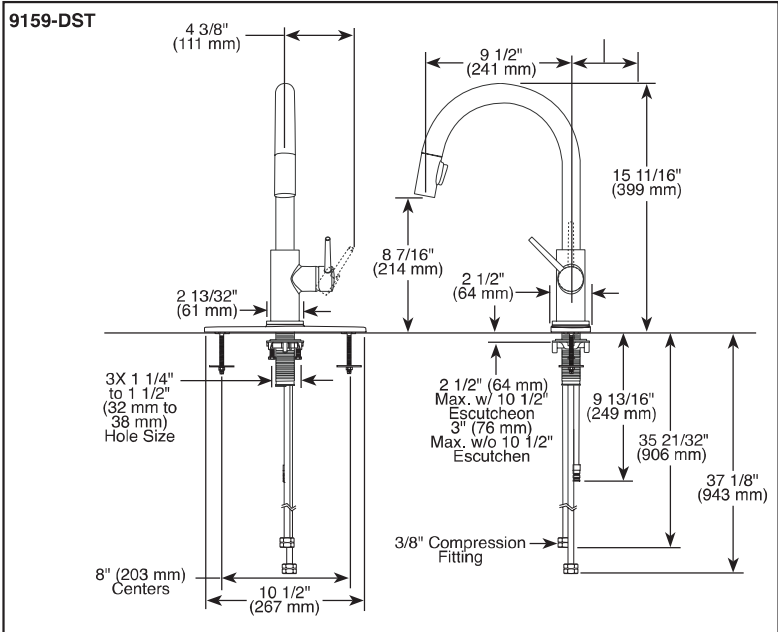
CONTACT

Tel: 1(800) 930-0214
Fax: 1(866) 310-7580
Email: sales@bristolsinks.com

BI Š>AF %&* Ž=-;F5: 7@ 4GF>7DEB3@FDK 43DE@= 83G57F +# +ŽEF



Submitted Model No.: _____
Specific Features: _____



▲ Designate proper finish suffix
Delta reserves the right (1) to make changes in specifications and materials, and (2) to change or discontinue models, both without notice or obligation. Dimensions are for reference only. See current full-line price book or www.deltafaucet.com for finish options and product availability.
DSP-K-9159-DST Rev. E



- Trinsic® Collection
- Single Handle Deck Mount
- 2-Function Pull-Down Sprayer
- Single or 3 Hole Sink Applications
- Centermount or 8" (203 mm) Centers w/ Optional 10 1/2" (267 mm) Escutcheon
- MagnaTite® Magnetic Docking


STANDARD SPECIFICATIONS:

- Single handle, 2-function pull-down kitchen faucets for exposed mounting on single or three hole sinks.
- Solid brass fabricated body.
- 15 11/16" (399 mm) high, 9 1/2" (241 mm) long, spout swings 360°.
- Lever handle. Control mechanism shall be full-motion valve cartridge.
- Touch-Clean® sprayhead.
- Quick connect hoses.
- Pull-down wand operates in an aerated or spray mode via ergonomic buttons.
- Red/blue indicator on handle button to indicate hot/cold temperature.
- MagnaTite® magnetic docking.
- Dual integral check valves in sprayer.
- Mounting wrench to assist in tightening mounting nut securely.
- Hose travels inside mounting shank so it will not interfere with deck edges.
- Keyed 10 1/2" (267 mm) escutcheon to help alignment and aid installation.
- Maximum 1.80 gpm @ 60 psi, 6.8 L/min @ 414 kPa

WARRANTY

- Lifetime limited warranty on parts (other than electronic parts and batteries) and finishes: or, for commercial users, for 5 years from date of purchase.
- 5 year limited warranty on electronic parts (other than batteries); or, for commercial users, for 1 year from the date of purchase. No warranty is provided on batteries.

COMPLIES WITH:

- ASME A112.18.1 / CSA B125.1
- ASME A112.18.6
-  Indicates compliance to ICC/ANSI A117.1
- Verified compliant with .25% weighted average Pb content regulations.



55 E 111th Street, Indianapolis, Indiana 46280
350 South Edgeware Road, St. Thomas, ON N5P 4L1
© 2015 Masco Corporation of Indiana

