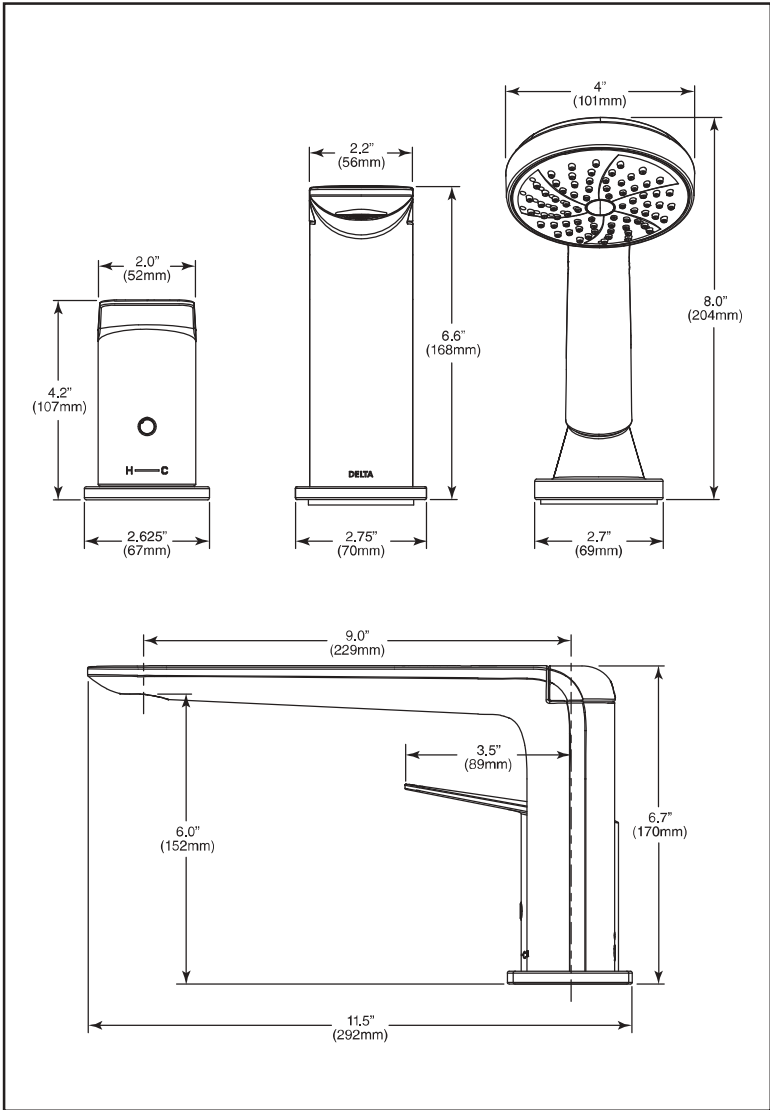


WTR4 LOT 127 - PRIMARY ENSUITE T3771-BL MATTE BLACK



Submitted Model No.: \_\_\_\_\_  
Specific Features: \_\_\_\_\_



▲ Designate Proper Finish Suffix

Delta Faucet Company reserves the right (1) to make changes in specifications and materials, and (2) to change or discontinue models, both without notice or obligation. Dimensions are for reference only. See current full-line price book or [www.deltafaucet.com](http://www.deltafaucet.com) for finish options and product availability.  
DSP-B-T3771, Rev. A



BATHROOM FAUCETS

- Portage™ Bath Collection
- Single Handle Roman Tub Faucet with Hand Shower
- Three Hole Installation

STANDARD SPECIFICATIONS:

- Hand Shower maximum flow rate 1.75gpm @ 80psi, 6.6 L/min @ 550kPa
- Trim only for single handle Roman Tub Faucet with Hand Shower
- Hand Shower includes double check valves for backflow prevention
- Temperature only controlled with handle
- Hot/cold indicator
- Rough-in Kit must be ordered to complete installation:
  - R3707 for flexible rough-in
  - R3707-MF for flexible PEX cold expansion rough-in
  - R3707-PX for flexible PEX crimp rough-in
  - R3716 for fixed rough-in
  - R3716-MF for fixed PEX cold expansion rough-in
  - R3716-PX for fixed PEX crimp rough-inThere are separate specification sheets on each rough-in kit, if more detail is required

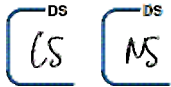
WARRANTY

- Parts and Finish - Lifetime limited warranty; or for commercial purchasers, 10 years for multi-family residential (apartments and condominiums) and 5 years for all other commercial uses, in each case from the date of purchase.
- Electronic Parts and Batteries (if applicable) - 5 years from the date of purchase; or for commercial purchasers, 1 year from the date of purchase. No warranty is provided on batteries.



COMPLIES WITH:

- ASME A112.18.1 / CSA B125.1
- EPA WaterSense®
-  Indicates compliance to ICC/ANSI A117.1



Delta Faucet Company  
55 E. 111th Street, Indianapolis, IN 46280  
350 South Edgeware Road, St. Thomas, ON N5P 4L1  
© 2020 Delta Faucet Company

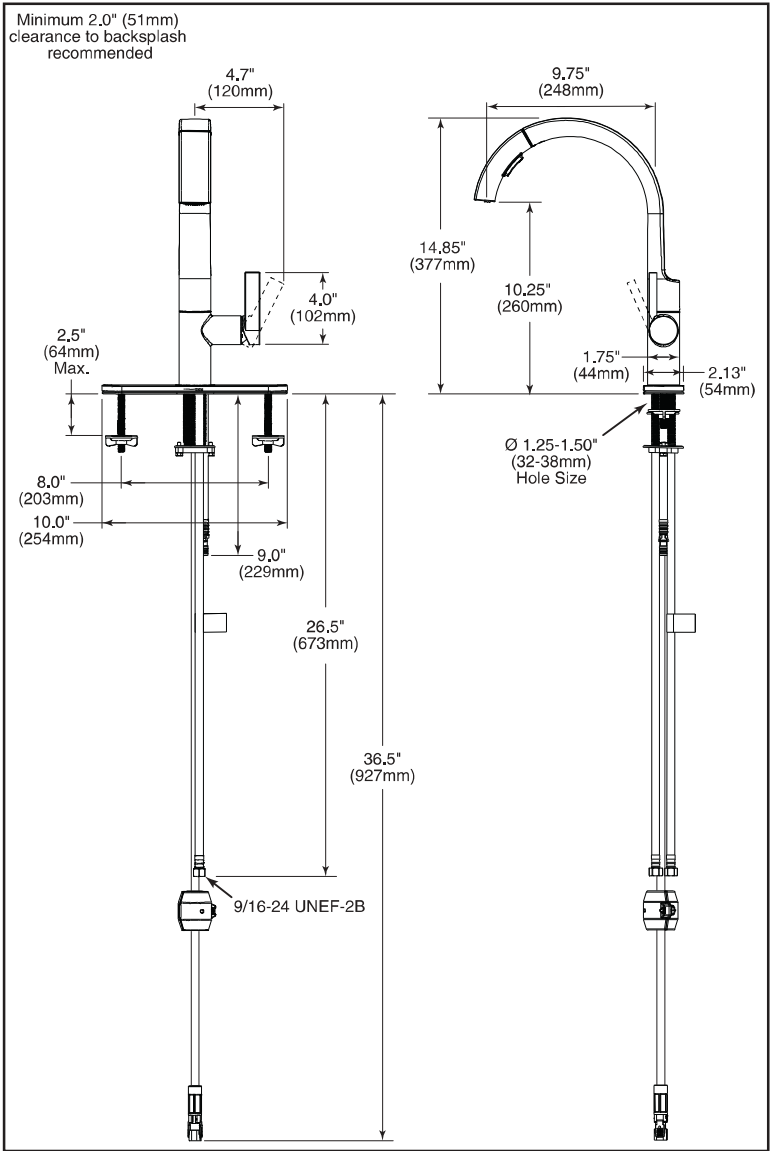
WTR4 LOT 127 - KITCHEN FAUCET 940LF-BL MATTE BLACK



KITCHEN FAUCETS

- ☐ Keele™ Pull-Down Kitchen Faucet
- ☐ Single Handle Deck Mount
- ☐ MagnaTite® Magnetic Docking



SUBMITTED MODEL NO.: \_\_\_\_\_  
SPECIFIC FEATURES: \_\_\_\_\_



STANDARD SPECIFICATIONS:

- Single handle kitchen faucet
- One or three hole mount (RP63209 Escutcheon optional, not included)
- 8" centres with optional 10" long escutcheon (ordered separately)
- 14.85" (377 mm) high, 9.75" (248 mm) spout length, swings 360°
- Pull-down spout operates in an aerated or spray mode via an easy push toggle button
- MagnaTite® magnetic docking
- Touch-Clean® spray head
- Quick Snap® hose installation
- Dual integral check valves
- Spout is connected to valve body with a 59" (150 cm) long hose
- Ceramic cartridge
- Standard with 3/8" compression
- Maximum flow rate 1.8 gpm @ 60 PSI, 6.8 L/min @ 414 kPa
- Maximum flow rate 1.50 gpm @ 60 psi, 5.7 L/min @ 414 kPa

COMPLIES WITH:

- ASME A112.18.1 / CSA B125.1
-  Verified compliant with 0.25% weighted average Pb content regulations
-  Indicates compliance to ICC/ANSI A117.1

WARRANTY

- Parts and Finish - Lifetime limited warranty; or for commercial purchasers, 10 years for multi-family residential (apartments and condominiums) and 5 years for all other commercial uses, in each case from the date of purchase.
- Electronic Parts and Batteries (if applicable) - 5 years from the date of purchase; or for commercial purchasers, 1 year from the date of purchase. No warranty is provided on batteries.

▲ Designate Proper Finish Suffix

Delta Faucet reserves the right (1) to make changes in specifications and materials, and (2) to change or discontinue models, both without notice or obligation. Dimensions are for reference only. See current full-line price book or [www.deltafaucet.com](http://www.deltafaucet.com) for finish options and product availability.

**Delta Faucet Company**  
350 South Edgeware Road, St. Thomas, ON N5P 4L1  
55 E. 111th Street, Indianapolis, IN 46280  
© 2023 Delta Faucet Company

**DSP-K-940LF, Rev. A**

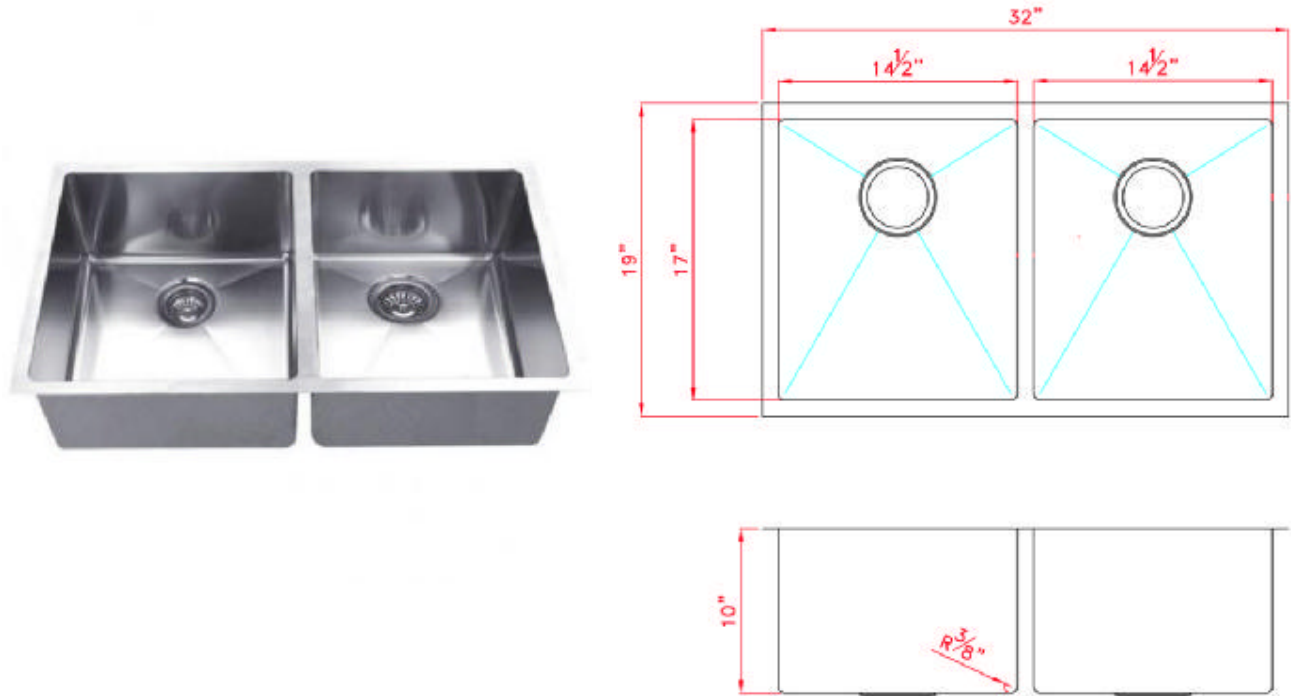
DS  
65

DS  
NS

WTR4 LOT 127 - KITCHEN SINK

Product Specification Sheet

B1927 Undermount Double Sink with 15mil Radius Corners



**Colour Finish**  
Stainless Steel

**Model No.**  
B1927

- Description**
- Double Bowl Undermount Sink with 15mil radius corners
  - Outside dimensions: 32" x 19" x 10"
  - Minimum Cabinet Size: 33"
  - Stainless Steel Double Bowl Sink
  - 16 Gauge Type 304 Stainless Steel
  - Stone Guard undercoating over rubber pad
  - 3 1/2" drain opening
  - Supplied with installation clip, template and strainer
  - cUPC certified

Available accessories

- BG1927 - Stainless Steel Grid
- Colander Strainer - Stainless Steel
- Zero Radius Basket
- Drying Rack



MAIN LOCATION

**BRISTOL SINKS**  
56 Firestone Blvd  
London, Ontario  
N5W 6E6

WESTERN LOCATION

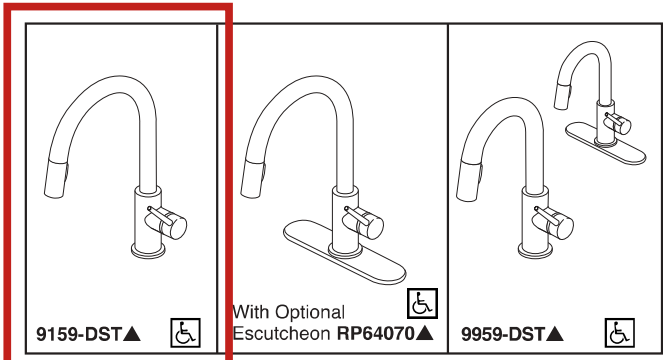
**BRISTOL SINKS**  
964 72nd Avenue NE  
Calgary, Alberta  
T2E 8V9

CONTACT

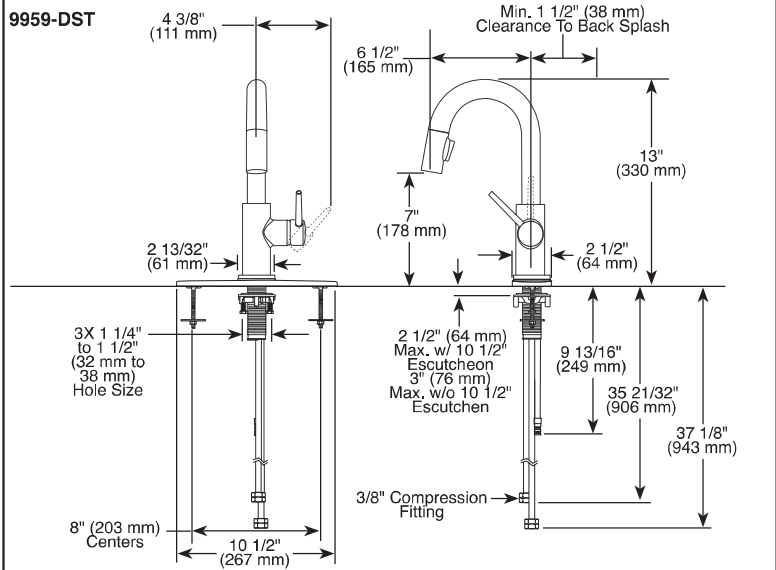
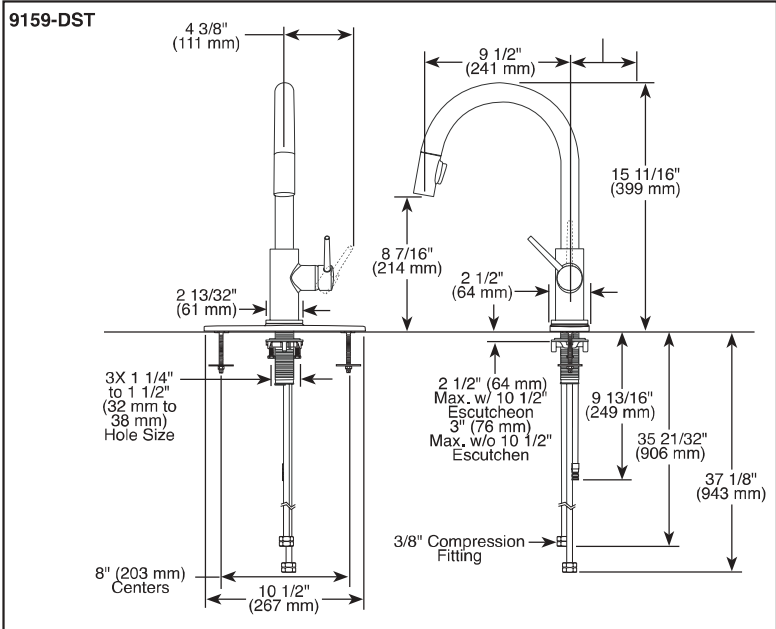
Tel: 1 (800) 930-0214  
Fax: 1 (866) 310-7580  
Email: sales@bristolsinks.com



WTR4 LOT 127 - LAUNDRY SINK FAUCET 9159-BL-DST MATTE BLACK



Submitted Model No.:  
Specific Features:



▲ Designate proper finish suffix  
Delta reserves the right (1) to make changes in specifications and materials, and (2) to change or discontinue models, both without notice or obligation. Dimensions are for reference only. See current full-line price book or [www.deltafaucet.com](http://www.deltafaucet.com) for finish options and product availability.  
DSP-K-9159-DST Rev. E



- Trinsic® Collection
- Single Handle Deck Mount
- 2-Function Pull-Down Sprayer
- Single or 3 Hole Sink Applications
- Centermount or 8" (203 mm) Centers w/ Optional 10 1/2" (267 mm) Escutcheon
- MagnaTite® Magnetic Docking

STANDARD SPECIFICATIONS:

- Single handle, 2-function pull-down kitchen faucets for exposed mounting on single or three hole sinks.
- Solid brass fabricated body.
- 15 11/16" (399 mm) high, 9 1/2" (241 mm) long, spout swings 360°.
- Lever handle. Control mechanism shall be full-motion valve cartridge.
- Touch-Clean® sprayhead.
- Quick connect hoses.
- Pull-down wand operates in an aerated or spray mode via ergonomic buttons.
- Red/blue indicator on handle button to indicate hot/cold temperature.
- MagnaTite® magnetic docking.
- Dual integral check valves in sprayer.
- Mounting wrench to assist in tightening mounting nut securely.
- Hose travels inside mounting shank so it will not interfere with deck edges.
- Keyed 10 1/2" (267 mm) escutcheon to help alignment and aid installation.
- Maximum 1.80 gpm @ 60 psi, 6.8 L/min @ 414 kPa

WARRANTY

- Lifetime limited warranty on parts (other than electronic parts and batteries) and finishes: or, for commercial users, for 5 years from date of purchase.
- 5 year limited warranty on electronic parts (other than batteries); or, for commercial users, for 1 year from the date of purchase. No warranty is provided on batteries.

COMPLIES WITH:

- ASME A112.18.1 / CSA B125.1
- ASME A112.18.6
- Indicates compliance to ICC/ANSI A117.1
- Verified compliant with .25% weighted average Pb content regulations.



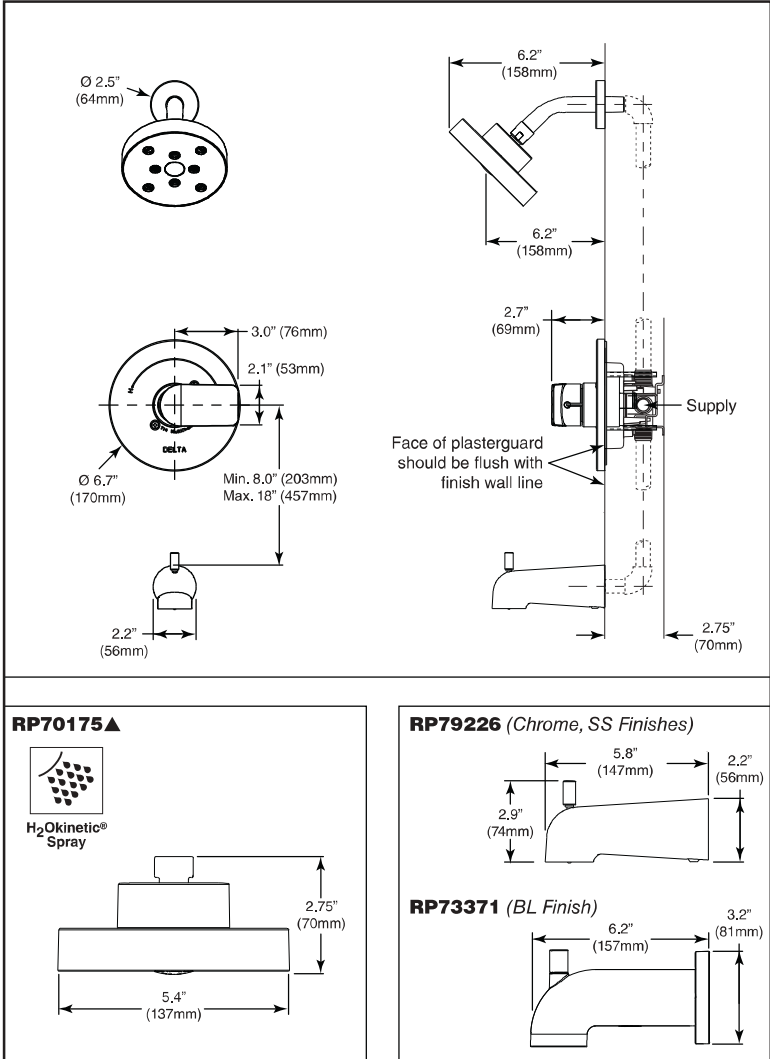
55 E 111th Street, Indianapolis, Indiana 46280  
350 South Edgeware Road, St. Thomas, ON N5P 4L1  
© 2015 Masco Corporation of Indiana



WTR4 LOT 127 - PRIMARY ENSUITE AND BASEMENT BATHROOM T1427-BL  
MATTE BLACK



Submitted Model No.: \_\_\_\_\_  
Specific Features: \_\_\_\_\_



▲ Designate Proper Finish Suffix  
Delta Faucet Company reserves the right (1) to make changes in specifications and materials, and (2) to change or discontinue models, both without notice or obligation. Dimensions are for reference only. See current full-line price book or [www.deltafaucet.com](http://www.deltafaucet.com) for finish options and product availability.  
DSP-B-T14071, Rev. A



BATHROOM FAUCETS

- Portage™ Bath Collection
- Valve Only (T14071)
- Shower Only (T14271)
- Tub/Shower (T14471)

STANDARD SPECIFICATIONS:

- Monitor® 14 Series pressure balanced bath single handle mixing valve trim
- Maintains a balanced pressure of hot and cold water even when a valve is turned on or off elsewhere in the system
- For use with MultiChoice® Universal rough valve body (R10000 Series)
- Back-to-back installation capability.
- Temperature only controlled with handle
- Red/blue temperature indicators
- Field adjustable to limit Stop
- 120° maximum handle rotation.
- All parts replaceable from the front of the valve.
- Maximum 1.75gpm @80psi (6.6L/min@ 550kpa)
- Tub port maximum flow rate 6.0gpm @ 60psi with R10000-UNBX
- ½" C.W.T slip-on spout

WARRANTY

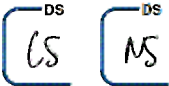
- Parts and Finish - Lifetime limited warranty; or for commercial purchasers, 10 years for multi-family residential (apartments and condominiums) and 5 years for all other commercial uses, in each case from the date of purchase.
- Electronic Parts and Batteries (if applicable) - 5 years from the date of purchase; or for commercial purchasers, 1 year from the date of purchase. No warranty is provided on batteries.



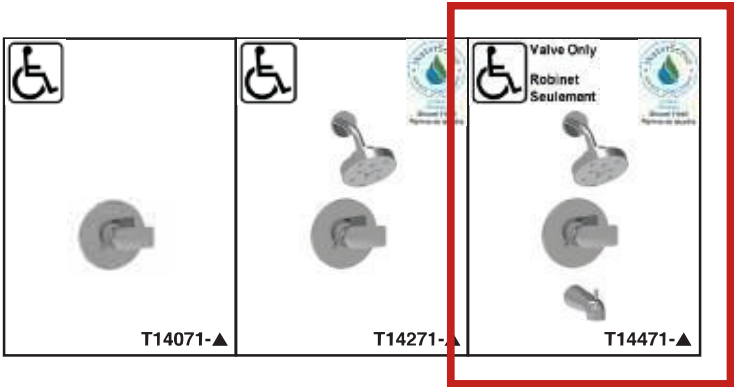
COMPLIES WITH:

- ASME A112.18.1 / CSA B125.1
- ASSE 1016
- EPA WaterSense®
- ♿ Indicates compliance to ICC/ANSI A117.1

Delta Faucet Company  
55 E. 111th Street, Indianapolis, IN 46280  
350 South Edgeware Road, St. Thomas, ON N5P 4L1  
© 2020 Delta Faucet Company



WTR4 LOT 127 - MAIN BATHROOM T14471-BL MATTE BLACK



BATHROOM FAUCETS

- Portage™ Bath Collection
- Valve Only (T14071)
- Shower Only (T14271)
- Tub/Shower (T14471)

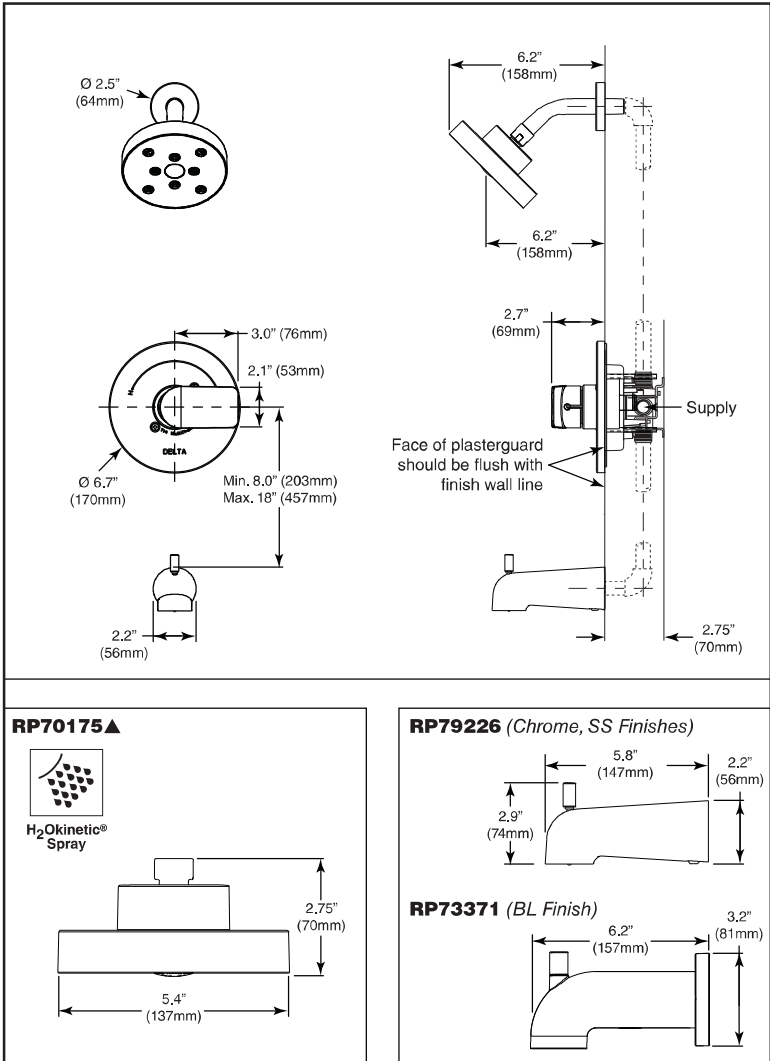
Submitted Model No.: \_\_\_\_\_  
Specific Features: \_\_\_\_\_

STANDARD SPECIFICATIONS:

- Monitor® 14 Series pressure balanced bath single handle mixing valve trim
- Maintains a balanced pressure of hot and cold water even when a valve is turned on or off elsewhere in the system
- For use with MultiChoice® Universal rough valve body (R10000 Series)
- Back-to-back installation capability.
- Temperature only controlled with handle
- Red/blue temperature indicators
- Field adjustable to limit Stop
- 120° maximum handle rotation.
- All parts replaceable from the front of the valve.
- Maximum 1.75gpm @80psi (6.6L/min@ 550kpa)
- Tub port maximum flow rate 6.0gpm @ 60psi with R10000-UNBX
- ½" C.W.T slip-on spout

WARRANTY

- Parts and Finish - Lifetime limited warranty; or for commercial purchasers, 10 years for multi-family residential (apartments and condominiums) and 5 years for all other commercial uses, in each case from the date of purchase.
- Electronic Parts and Batteries (if applicable) - 5 years from the date of purchase; or for commercial purchasers, 1 year from the date of purchase. No warranty is provided on batteries.



COMPLIES WITH:

- ASME A112.18.1 / CSA B125.1
- ASSE 1016
- EPA WaterSense®
- Indicates compliance to ICC/ANSI A117.1

▲ Designate Proper Finish Suffix  
Delta Faucet Company reserves the right (1) to make changes in specifications and materials, and (2) to change or discontinue models, both without notice or obligation. Dimensions are for reference only. See current full-line price book or [www.deltafaucet.com](http://www.deltafaucet.com) for finish options and product availability.  
DSP-B-T14071, Rev. A

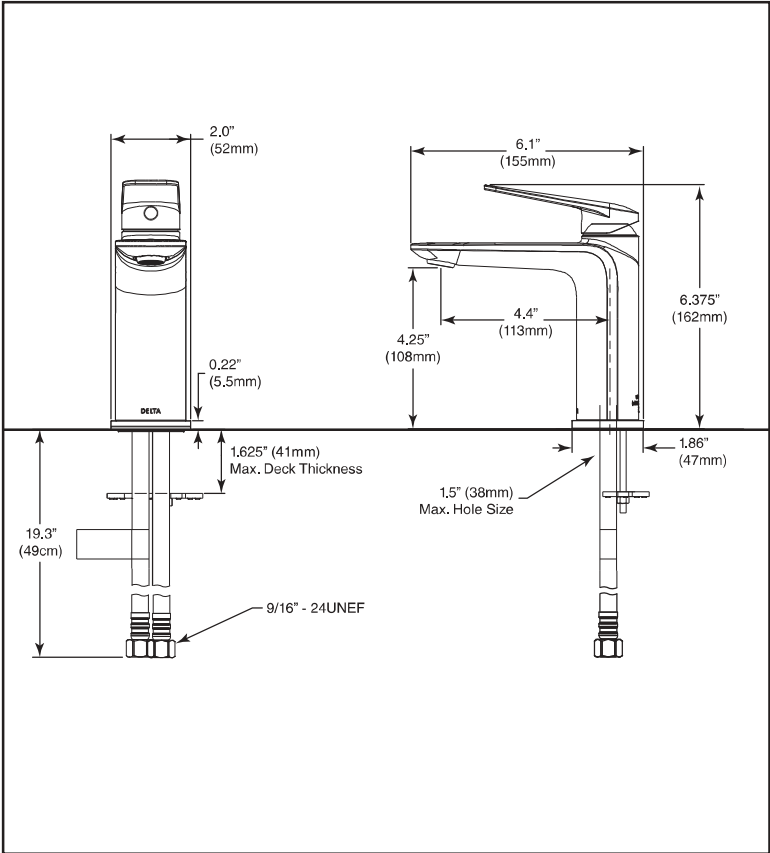




WTR4 LOT 127 - PRIMARY ENSUITE, MAIN BATHROOM AND BASEMENT  
BATHROOM 571LF-BL-LPU MATTE BLACK



Submitted Model No.: \_\_\_\_\_  
Specific Features: \_\_\_\_\_



BATHROOM FAUCETS

- Portage™ Bath Family
- Single Handle Deck Mount

STANDARD SPECIFICATIONS:

- **571LF-Δ-LPU** - Max flow rate 1.2 gpm @ 60 psi, 4.5 L/min @ 414 kPa (Aerated pressure compensating)
- **571LF-Δ-LPU-1.0** - Max flow rate 1.0 gpm @ 60 psi, 3.8 L/min @ 414 kPa (Aerated pressure compensating)
- **571LF-Δ-LPU-0.5** - Max flow rate 0.5 gpm @ 60 psi, 1.9 L/min @ 414 kPa (Aerated pressure compensating)
- Standard single hole mount or three hole mount with optional - 6 inch 152mm Escutcheon (sold seperately)
- 1 5/8 inch 41mm max. deck thickness
- Ceramic cartridge
- Red/blue indicator markings
- Metal lever handle
- Solid brass body
- 19 inch 483mm long flexible supply lines with 3/8 inch supply fittings
- Rigid Spout
- Less pop-up, no pop-up hole

OPTIONAL ACCESSORIES:

(sold seperately)


- RP101342Δ - 6 inch 152mm Escutcheon
- 72173Δ - push pop-up with overflow
- 33W576Δ - push pop-up with overflow holes

WARRANTY

- Parts and Finish - Lifetime limited warranty; or for commercial purchasers, 10 years for multi-family residential (apartments and condominiums) and 5 years for all other commercial uses, in each case from the date of purchase.
- Electronic Parts and Batteries (if applicable) - 5 years from the date of purchase; or for commercial purchasers, 1 year from the date of purchase. No warranty is provided on batteries.



COMPLIES WITH:

- ASME A112.18.1 / CSA B125.1
- EPA WaterSense®, applies to 571LF-Δ-LPU 1.2 gpm @ 60 psi, 4.5 L/min @ 414 kPa models only.
- Verified compliant with 0.25% weighted average Pb content regulations
-  Indicates compliance to ICC/ANSI A117.1

▲ Designate Proper Finish Suffix

Delta Faucet Company reserves the right (1) to make changes in specifications and materials, and (2) to change or discontinue models, both without notice or obligation. Dimensions are for reference only. See current full-line price book or [www.deltafaucet.com](http://www.deltafaucet.com) for finish options and product availability.

DSP-L-571LF-LPU, Rev.B

**Delta Faucet Company**  
55 E. 111th Street, Indianapolis, IN 46280  
350 South Edgeware Road, St. Thomas, ON N5P 4L1  
© 2020 Delta Faucet Company

