

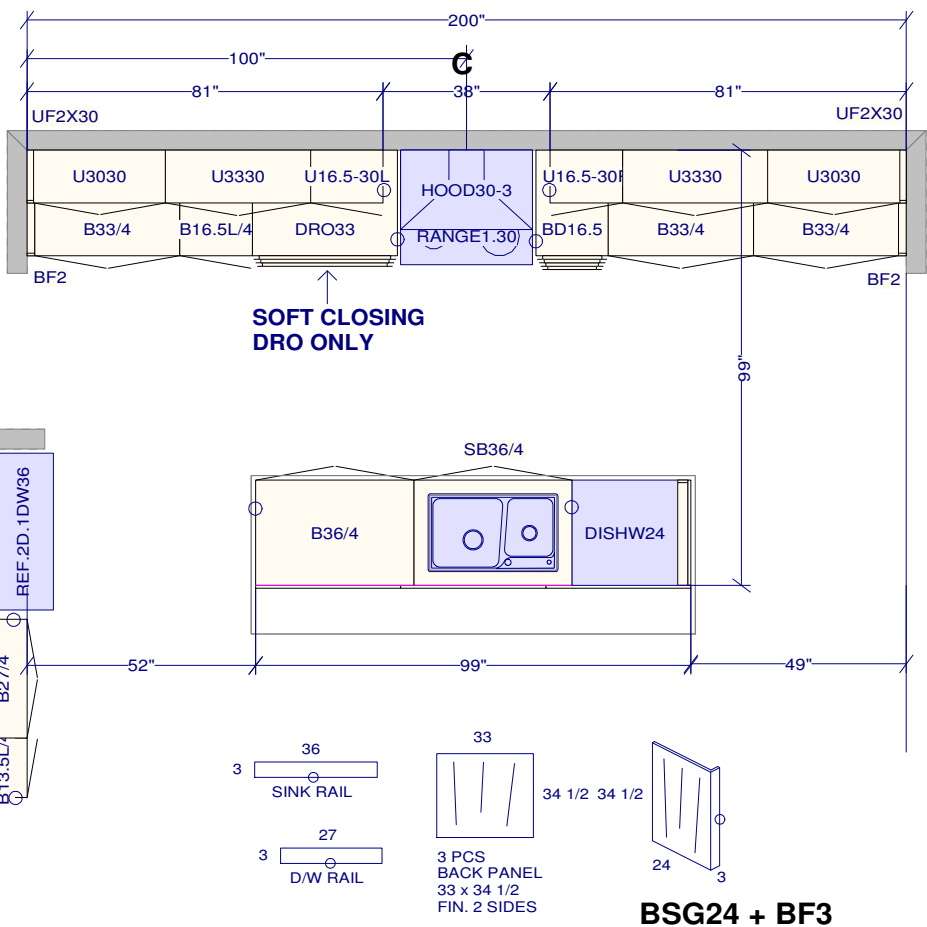
SPECTRUM KITCHENS OTTAWA

DCR PHOENIX HOMES
342 PATHWAYS PH2

MODEL - STRATHMORE

KITCHEN

MOUNTING HEIGHT - 84



KITCHEN PERIMETER
LINE 2 - MISSION WHITE SATIN
HARDWARE - KU60
STANDARD WHITE INTERIOR
METAL DRAWER BOX
4 PCS - 5/8" KICK - FIN. BOTH ENDS
3 PCS - FLAT MOULDING

ISLAND
LINE 3 - SOHO ANISE MAPLE
HARDWARE - KU60
STANDARD WHITE INTERIOR
METAL DRAWER BOX
2 PCS - 5/8" KICK - FIN. BOTH ENDS
2 PCS - 90 DEG. CORNER MOULD
2 PCS - T-MOULD
3 PCS - FLAT MOULDING

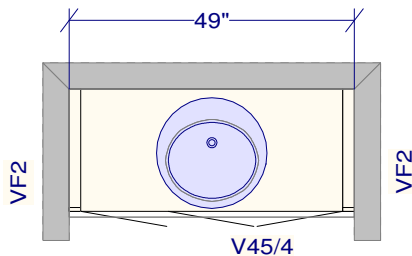
All dimensions ,size designations given are subject to verification on job site and adjustment to fit job conditions.	This is an original design and must not be released or copied unless applicable fee has been paid or job order placed.	Designed: 2024-07-31 Printed: 2024-07-31	

SPECTRUM KITCHENS OTTAWA

DCR PHOENIX HOMES
342 PATHWAYS PH2

MODEL - STRATHMORE

VANITIES



POWDER

LINE 2 - POLO AZTEC MAPLE

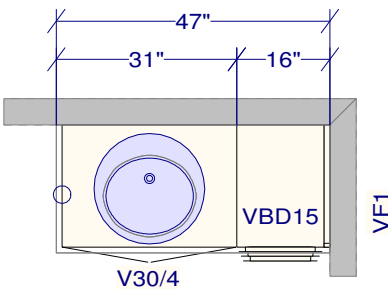
HARDWARE - HU60

STANDARD WHITE INTERIOR

METAL DRAWER BOX

1 PCS - 5/8" KICK - FIN. BOTH ENDS

1 PCS - FLAT MOULDING



MAIN BATH

LINE 2 - POLO NATURAL MAPLE

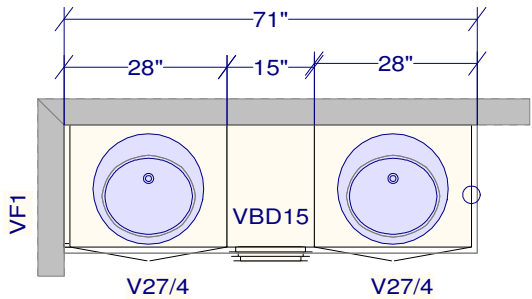
HARDWARE - HU64

STANDARD WHITE INTERIOR

METAL DRAWER BOX

1 PCS - 5/8" KICK - FIN. BOTH ENDS

1 PCS - FLAT MOULDING



ENSUITE

LINE 2 - POLO NATURAL MAPLE

HARDWARE - HU64

STANDARD WHITE INTERIOR

METAL DRAWER BOX

1 PCS - 5/8" KICK - FIN. BOTH ENDS

1 PCS - FLAT MOULDING

All dimensions ,size designations given are subject to verification on job site and adjustment to fit job conditions.

This is an original design and must not be released or copied unless applicable fee has been paid or job order placed.

Designed: 2024-07-24
Printed: 2024-07-30