



TARPIN LUMBER INCORPORATED

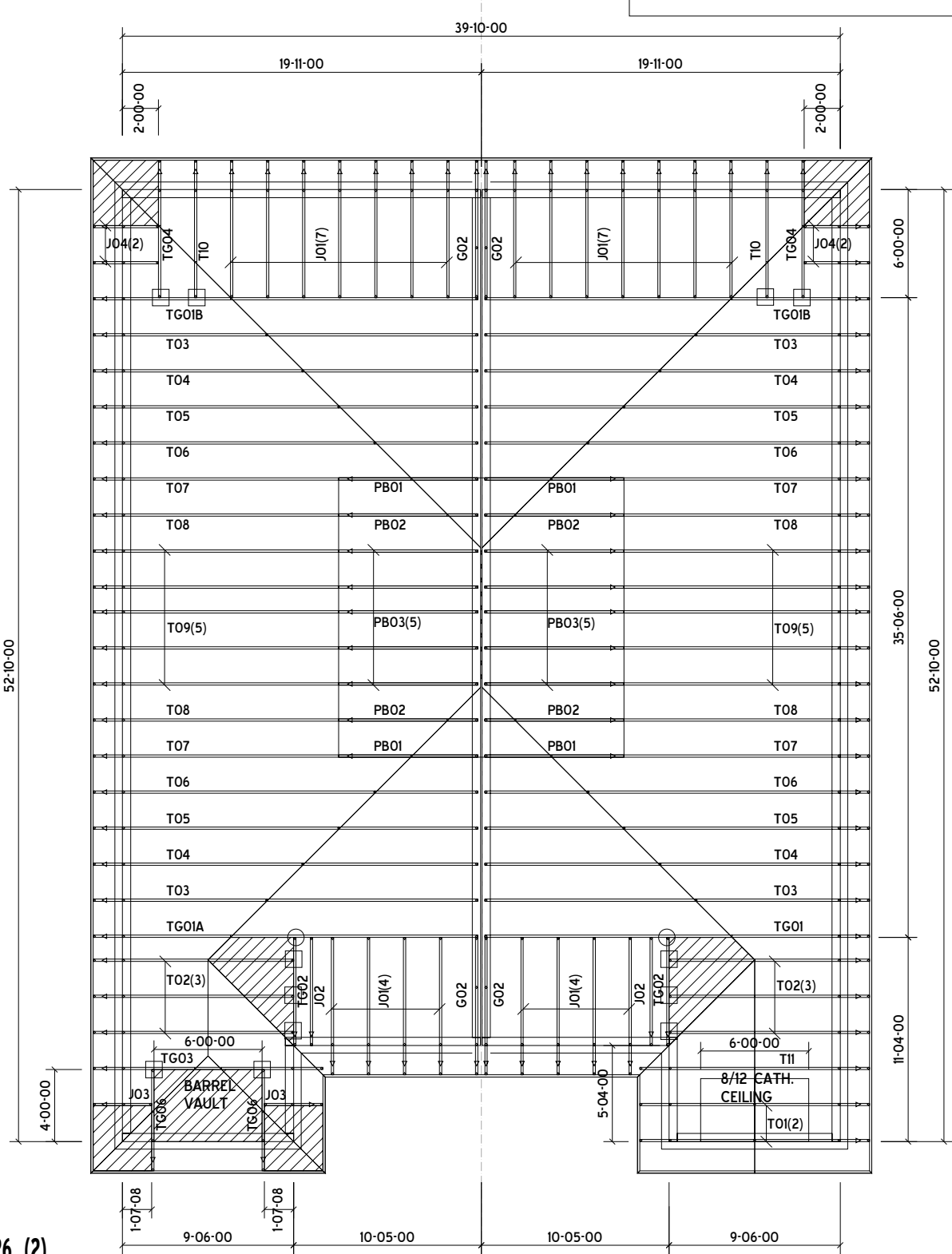
2267 Bowman Street  
Innisfil, Ontario L9S 3V5

705-436-5373/416-283-2222  
705-436-7457 [Fax]  
www.tarpin.com

Building Department Stamp:

ROOF TRUSS LAYOUT

SCALE: N.T.S.



○ = HUS26 (2)

□ = JUS24 (12)

NOTES:  
ALL ROOF SLOPES ARE 8/12.

HATCH LEGEND
CONVENTIONAL FRAMING

CONTRACTOR SHALL CHECK ALL DIMENSIONS AGAINST TARPIN ENGINEERING AND REPORT ANY DISCREPENCIES TO TARPIN LUMBER PRIOR TO PRODUCTION. ANY DIMENSIONAL LUMBER DESIGN SUPPORTING TRUSSES IS THE RESPONSIBILITY OF THE BUILDING DESIGNER NOT TARPIN LUMBER AND TRUSS

FOR ANY INQUIRIES PLEASE CONTACT: Shelli King/(416) 818-9212/sking@tarpin.com

ALL CONVENTIONAL FRAMING, EITHER SHOWN ON LAYOUT OR ASSUMED, IS TO CONFORM TO THE REQUIREMENTS OF OBC. CONVENTIONAL FRAMING OVER TRUSSES TO BE 2X4 SPF #2 AT 24" O/C WITH VERTICAL SUPPORTS TO EACH TRUSS INTERSECTION BELOW. VERTICAL SUPPORTS LONGER THAN 6'-0" SHALL BE Laterally Braced TO DIAPHRAM AT MID HEIGHT.

DO NOT SWITCH OR INVERT ANY TRUSSES. CAREFULLY REVIEW ALL DESIGNS PRIOR TO INSTALLATION. REFER TO SITE PACKAGE FOR INSTALLATION INSTRUCTIONS. ANY TRUSS REQUIRING REPAIR OR MODIFICATION SHOULD NOT BE INSTALLED UNTIL TARPIN TRUSS HAS REVIEWED.

CUSTOMER:	Plaza Corporation	LOCATION:	Richmond Hill	Roof Square Footage:	2822.75
PROJECT:	Sequin St	DATE:	3/12/2024	Ground Snow Load:	31.5 lb/ft²
MODEL:	Model 1850 B & 1850 A - Lot 3B	LOT:		DESIGNER:	PK4435
				QUOTE#:	24-00422

Per: joshua.nabua