

**SCHEDULE "D"**

ABD-5  
4 BEDROOM  
PLAN

**LOT #:** 3

**MODEL:** Windemere

**PURCHASER:** Huften

**LOT SIZE:** 40

**OCCUPANCY DATE:** ✓

**GARAGE SIZE:** Double

**CLOSE DATE:** August 30th, 2012

**ELEVATION:** A

**PAINT & CLEAN:** No

**FRONT DOOR:**

**EXTRAS INCLUDED IN PURCHASE PRICE:**

Incentive option off price

premium

upgrade 1 cabinets

*(Signature)*

SCHEDULE 'E'

A-BD-3

4 BED ROOM.

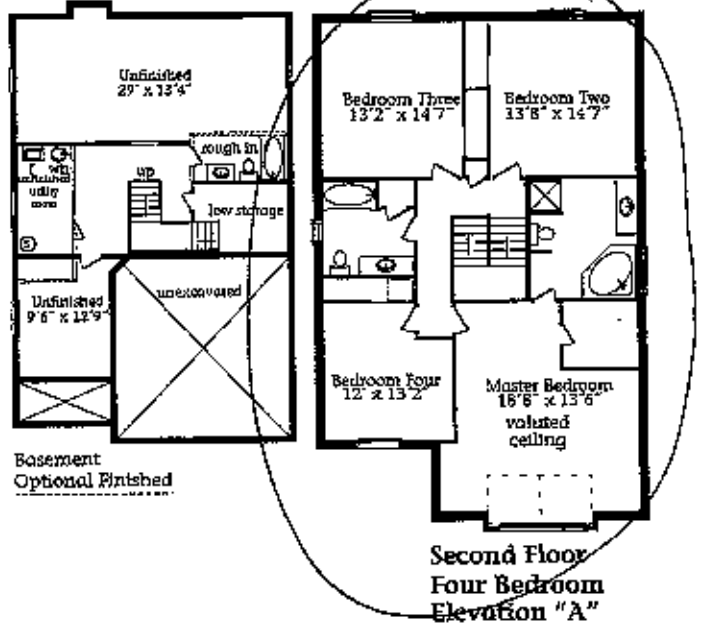
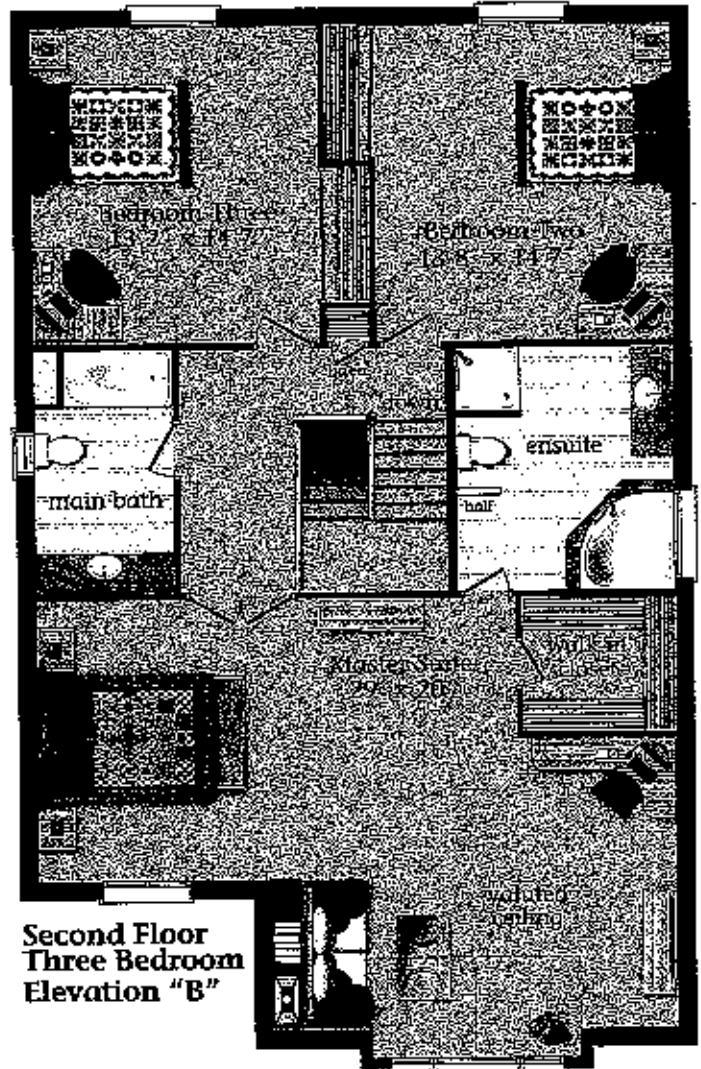
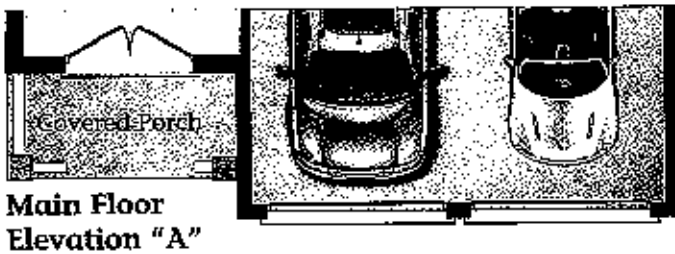
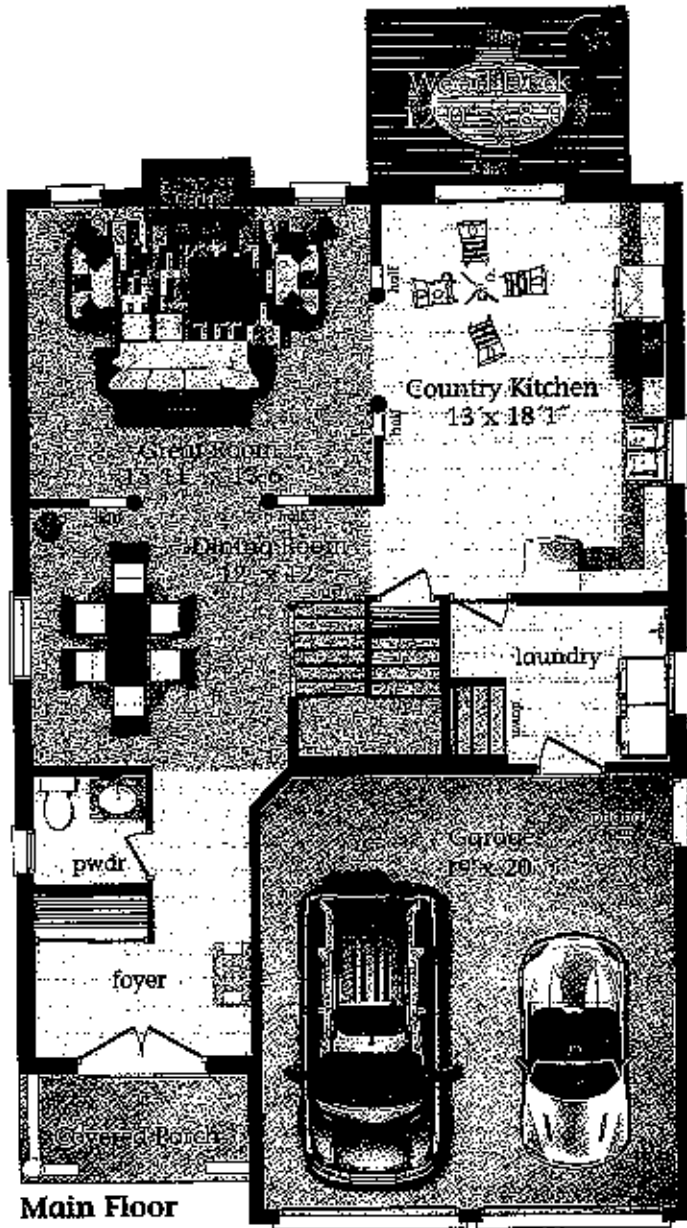
# Windemere

## 2 STOREY DETACHED

### 2416 Square Feet

As one of our most popular models, the Windemere has many fabulous features including double entry doors, open concept great room with gas fireplace, dining room and a large eat in kitchen. Beautiful and functional floor plan offers 3 or 4 bedrooms. Huge master has vaulted ceilings, walk in closet and a very large ensuite with corner soaker tub.

This home is also available with the luxury of a triple car garage if desired. Great basement layout with 3 piece rough in bath for future use.



Basement  
Optional Finished

Artist's Concept

All material, specifications and floor plans are subject to change without notice. House renderings are artist's conception and may be built as a mirror image. All floor plans are approximate dimensions. Actual usable floor space may vary from the stated floor area. Colour representations are approximate and subject to change. Municipal Architectural Controls may require modification to exterior material used, exterior house design, appearance and colour.

©2011 Homes for 2012. UltraModel 2416 - Windemere

*[Handwritten signature]*