

GENERAL KEY NOTES:

- ◆ JUNCTION BOX FOR TRI-SORT GARBAGE SYSTEM
- ◆ TOP OF STAIR
- ◆ SMOKE DETECTOR AND SPEAKER C/W FIRE ALARM ZONE
- ◆ DOOR HOLD OPEN DEVICE INTERCONNECTED TO FIRE ALARM SYSTEM TO RELEASE UPON ACTIVATION OF FIRE ALARM SYSTEM INTERCONNECTED TO LOCALIZED SMOKE DETECTORS.
- ◆ AUTO FLUSH TOILET/BIDET, REFER TO TOILET/BIDET SPECIFICATION FOR EXACT LOCATION AND REQUIREMENTS.
- ◆ CONFIRM ALL DIMENSIONS OF LIGHTING FIXTURES ON SITE WITH CLIENT PRIOR TO ROUGH-IN.

FOR CONTINUATION REFER TO DWG. E-5A

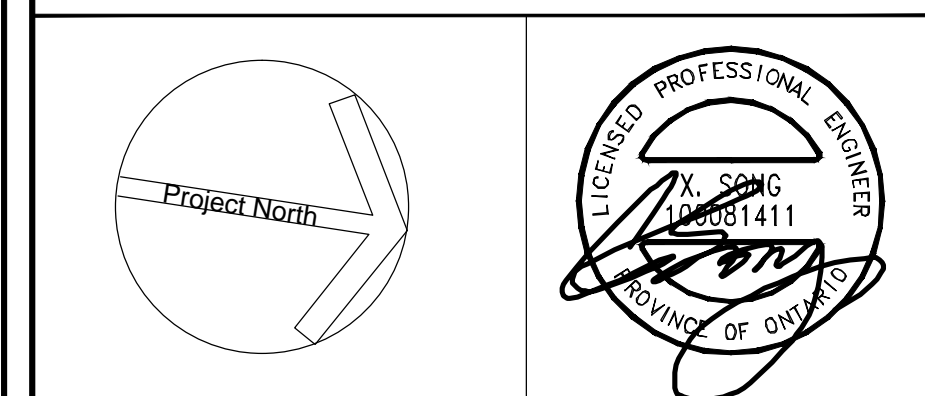
NO.	BY	DESCRIPTION	DATE
09	CM	ISSUED FOR AS PER SI E-6	2017-08-28
08	CM	ISSUED FOR AS PER SI E-4	2017-08-17
07	CM	ISSUED FOR AS PER SI E-3	2017-08-11
06	CM	ISSUED FOR CONSTRUCTION	2017-08-09
05	CM	PROGRESS FOR CONSTRUCTION	2017-07-18
04	CM	ISSUED FOR PERMIT	2016-12-28
03	CM	REVISED AS PER ESA COMMENTS AND FOR CLARIFICATION	2016-10-04
02	CM	REVISED AS PER ESA COMMENTS AND FOR CLARIFICATION	2016-05-19
01	CM	ISSUED FOR TENDER	2016-03-15

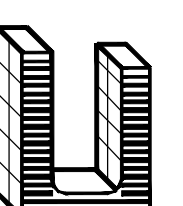
This drawing is an instrument of service, is provided by and is the property of United Engineering Inc. The contractor must verify and accept responsibility for all dimensions and conditions on site and must notify United Engineering Inc. of any discrepancy before proceeding.

United Engineering Inc. is not responsible for the accuracy of Architectural, structural, interior design, etc. on this drawing.

Refer to the appropriate trade drawings before proceeding with any work. Installation must conform to all applicable codes and requirements of the authorities having jurisdiction.

This drawing is not to be scaled, all symbols are graphic representations only.





United Engineering Inc.
Mechanical Electrical Consulting Engineers
3345 Keele Street, Suite 105,
Toronto, Ontario, M3J 1M6
Tel: (416) 398 1999, Fax: (416) 398 1933

TITLE
**3RD-5TH FLOOR PLANS - B
ELECTRICAL**

PROJECT
**PROPOSED RESIDENTIAL DEVELOPMENT
25 BAKER HILL BLVD.**

**ROYAL PINE HOMES
STOUFFVILLE, ONTARIO**

DRAWN CM	CHECKED MG	SCALE 1:75
DATE SEPT. 2015	PROJECT 14-016	DRAWING E-5B
		OF 12