

GENERAL NOTES:

1.

CONCRETE COMPRESSIVE STRENGTH (28 DAYS):
- STRENGTH:

42 MPa (6000 psi)
- RELEASE:

21 MPa (3000 psi)
2.

CONCRETE TYPE/CLASS
- F2
3.

AIR ENTRAINMENT ADMIX
- 6%
4.

CONCRETE FINISH
- STEEL FORM FINISH, U/S STAIR
- TROWEL FINISH
- 400MPa (60 psi)
5.

REBAR YIELD STRENGTH
6.

GROUTING BY CONTRACTOR.
7.

MINIMUM CONCRETE COVER AS SHOWN.
8.

ENGINEERS STAMP APPLIES TO STONE-LINK PRODUCTS ONLY. ALL LANDING/SUSPENDED
- SLABS TO BE DESIGNED AND ENGINEERED TO SUPPORT PRECAST STAIRS, BY OTHERS.
9.

CONTRACTOR TO CHECK AND VERIFY ALL DIMENSIONS AND INFORMATION ON DRAWINGS AND
- SPECIFICATION.
- DRAWINGS NOT TO BE USED FOR CONSTRUCTION OR ERECTION UNLESS DRAWINGS ARE
- NOTED "RECORD/ISSUE FOR PRODUCTION" BY STONE-LINK.
10.

THE TOLERANCES FOR THE PRECAST CONCRETE WORK SHALL CONFORM TO THE
- REQUIREMENTS OF CLAUSE 10 OF CSA A23.4-00.
11.

DO NOT SCALE DRAWINGS.
12.

ALL STAIRS HAVE BEEN DESIGNED AND CONFORM TO SHOP DRAWINGS THAT HAVE BEEN
- APPROVED/REVIEWED FOR THE PROJECT SPECIFIC USE IT HAS BEEN INTENDED FOR;
- ANY CONTEMPLATION FOR ALTERATIONS/MODIFICATINS RESULTING FROM AN ON SITE
- CONDITION MUST BE REPORTED IMMEDIATELY TO THE MANUFACTURER FOR
- COMPLETE ANALYSIS AND APPROVAL.
13.

STRUCTURAL ENGINEER TO VERIFY THAT THE LANDING IS CAPABLE OF WITHSTANDING THE
- EXPECTED LOADS.

• INFORMATION AND DIMENSIONS ON DRAWINGS AND SPECIFICATIONS ARE TO BE CHECKED BY THE CONTRACTOR BEFORE COMMENCING ANY WORK (REPORT ANY ERRORS AND OMISSIONS DIRECTLY TO THE MANUFACTURER)

STAIR NOTES:

1.

ALL STAIRS ARE 2 HR FIRE RATING MINIMUM UNLESS NOTED OTHERWISE.
2.

ALL STAIRS HAVE INTEGRAL NON-SLIP TREADS, UNLESS NOTED OTHERWISE.
3.

RAILING MFG. TO MEASURE AFTER STAIRS ARE INSTALLED.

DESIGN NOTES:

1.

STAIRS DESIGNED ACCORDING TO O.B.C./CSA STANDARDS.
2.

LIVE LOAD=4.8KPa (100psf)-(O.B.C. SECTION 4.1.6.3)
3.

LOAD FACTORS: DL=1.25 LL=1.5
4.

ALL DIMENSIONS CONFORM TO O.B.C. 2012-PART 3.
5.

THE PRECAST STAIRS ARE NOT DESIGNED FOR ANY ADDITIONAL LOADING.

INSTALLATION NOTES:

1.

INSTALLATION OF STAIRS AND LANDINGS BY OTHERS.
2.

LIFTING DEVICE OPTIONS: 1" WIRE ROPE LIFTING LOOP BY CABLE CRAFT AND
- 1" T-12 SWIVEL LIFTING PLATE BY DAYTON SUPERIOR.
3.

OFF LOADING OF STAIRS SHALL BE PERFORMED WITH ACCEPTABLE EQUIPMENT AND
- METHODS (BY OTHERS)
4.

INSTALLATION OF STAIRS BY OTHERS.
5.

GROUTING AND PATCHING (LIFTING INSERTS) WITH NON SHRINK GROUT BY OTHERS.
6.

STONE-LINK IS NOT RESPONSIBLE FOR DAMAGES CAUSED BY INCORRECT
- HANDLING, STRIPPING AND INSTALLATION.
7.

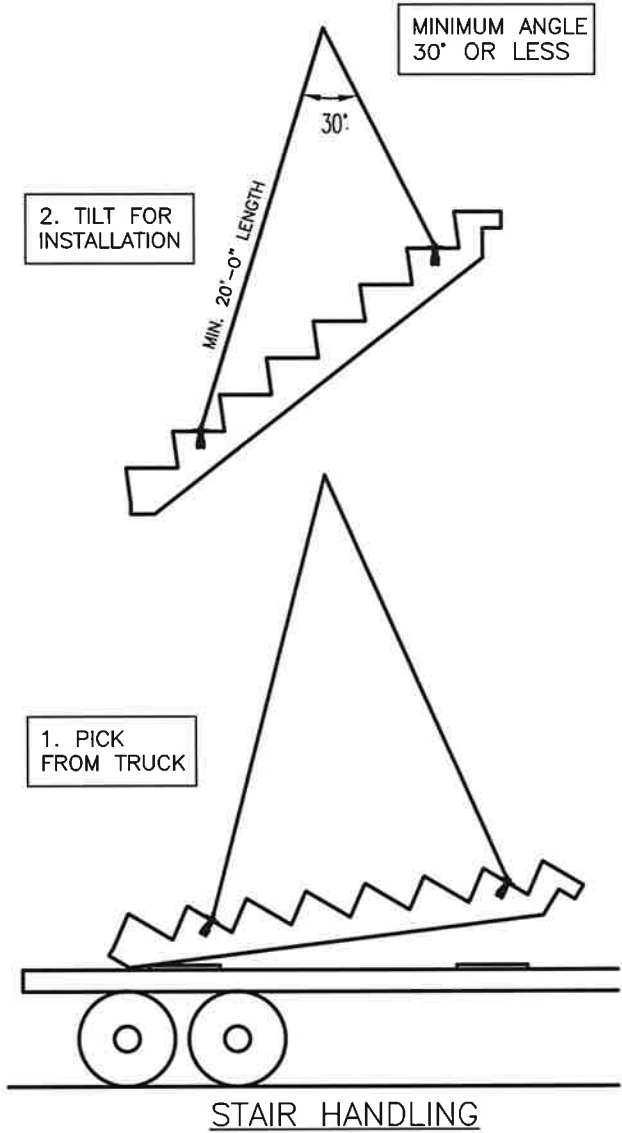
SPALLING, CRACKING OR ANY DAMAGE TO THE STAIR FINISH THAT MAY RESULT
- FROM DRILLING, TO ACCOMODATE FASTENING OF THE GUARDRAIL POSTS, IS THE
- RESPONSIBILITY OF OTHERS.
8.

NO TEMPORARY FALSE WORK OR SHORING LOADS ARE TO BE IMPOSED ON THE
- PRECAST STAIR AT ANY GIVEN TIME (WHICH MAY RESULT FROM OVERHEAD
- ACTIVITY IMMEDIATELY ABOVE THE PRECAST CONCRETE STAIR).
9.

THE STAIR WIDTH DIMENSION IS SUBJECT TO 13mm OF TOLERANCE WHEN
- ADJACENT TO ONE SHEAR WALL OR TO 20mm OF TOLERANCE WHEN
- BETWEEN TWO SHEAR WALLS.
10.

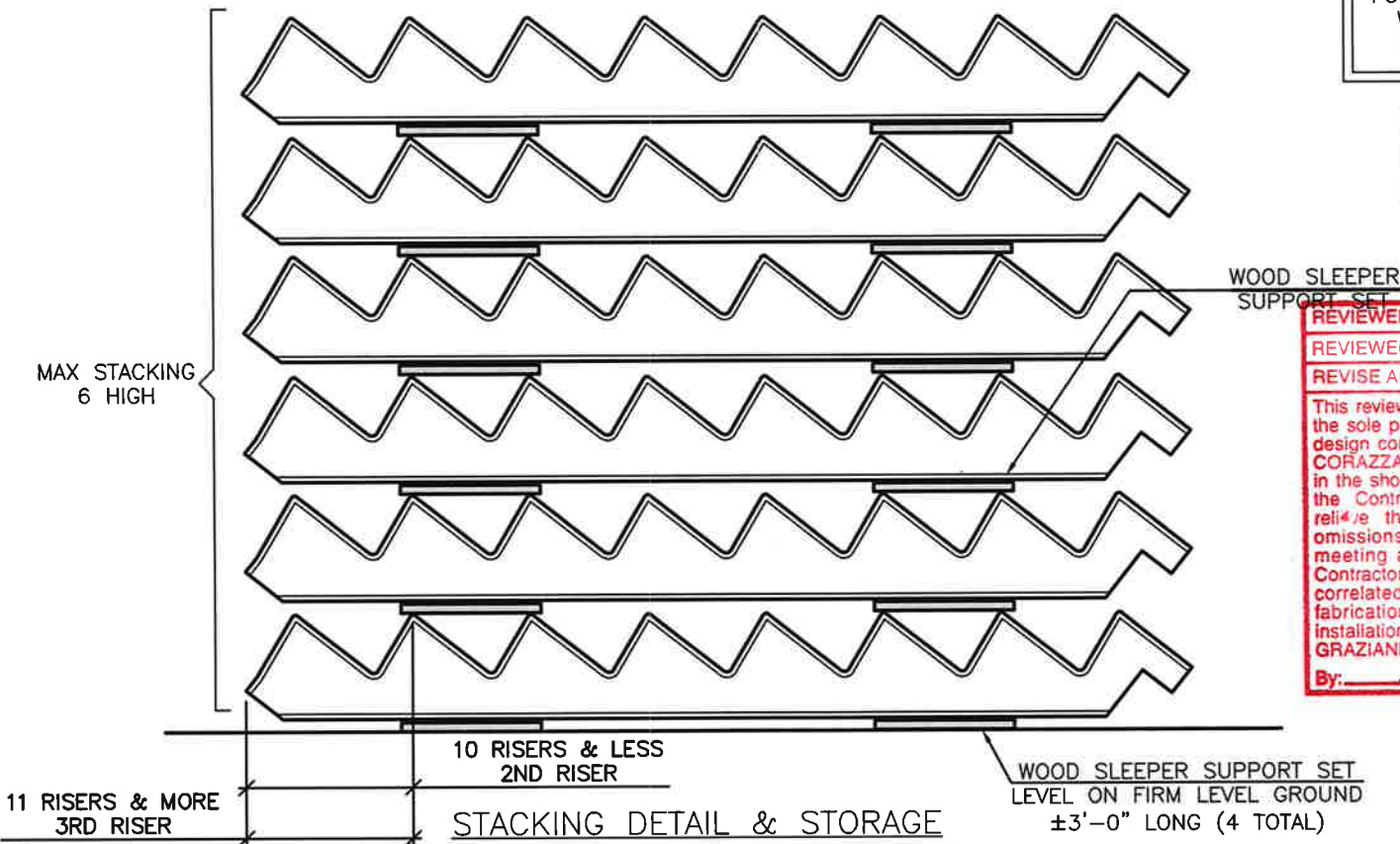
PRECAST STAIRS MAY BE CHIPPED OR DAMAGED DUE TO IMPACT LOADS OR
- IMPROPER HANDLING OF THE PRODUCT.
11.

MONOLITHIC POURS WITH TOP CONNECTION (B) IS RECOMMENDED FOR OPTIMUM
- INSTALLATION OF PRECAST STAIR UNIT.



WARNING:
IMPROPER STACKING OF STAIRS CAN LEAD TO CRACKING. FOLLOW THIS DETAIL WHEN PLACING WOOD SLEEPER SUPPORTS AND CUSHIONS UNDER STAIR UNITS.

NO SUPPORT IN CENTER OF SPAN. ONLY STACK SAME SIZE UNITS.



REVIEWED	
REVIEWED AS NOTED	
REVISE AND RE-SUBMIT	✓
This review by GRAZIANI + CORAZZA Architects Inc. is for the sole purpose of ascertaining conformance with the general design concept. This review shall not mean that GRAZIANI + CORAZZA Architects Inc. approves the detail design inherent in the shop drawings, responsibility for which shall remain with the Contractor submitting same, and such review shall not relieve the Contractor of his responsibility for errors or omissions in the shop drawings or of his responsibility for meeting all requirements of the contract documents. The Contractor is responsible for dimensions to be confirmed and correlated at job site, for information that pertains solely to fabrication processes or to techniques of construction and installation and for co-ordination of the work of all subtrades. GRAZIANI + CORAZZA Architects Inc.	
By: <i>SC</i>	Date: <i>24/8/2017</i>

VERDI FORMING



18.AUG.2017

AS PER ARCH. DWGS. IPC JULY.19.2017

NO

Date

Revision



137 Vinyl Court Woodbridge
L4L 4A3 On Canada
T: 905-850-8430
F: 905-854-2302
TF: 1-800-854-0072
www.stone-link.com

GENERAL NOTES

PROJECT:
HAMPTON MANOR
25 Baker Hill Blvd, Stouffville, ON

Drawn: AB

Scale: 1 : 50

Checked: EB

Date: 13.JUN.2017

Job: SL3022017

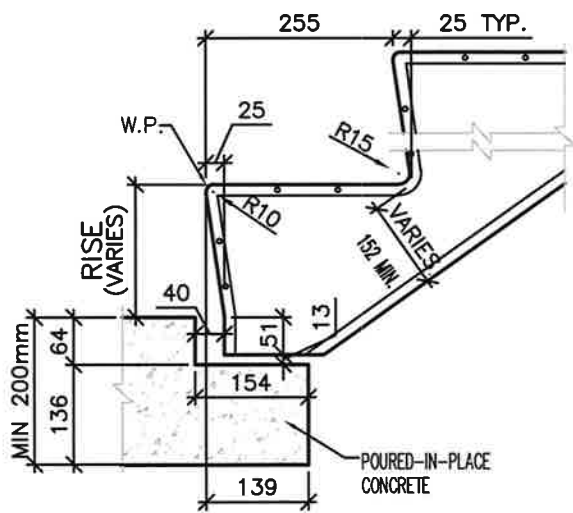
Dwg No.

01

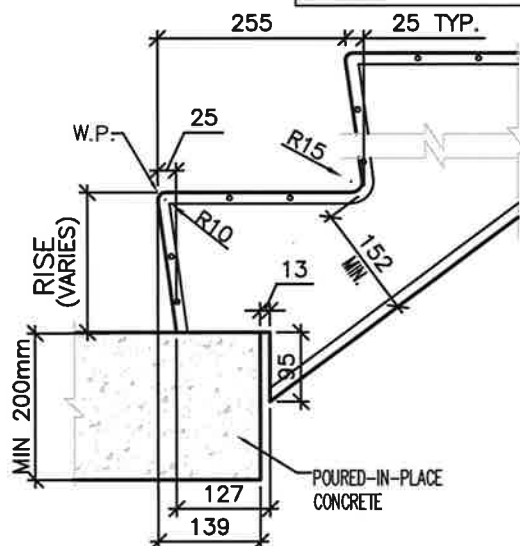


02	
----	--

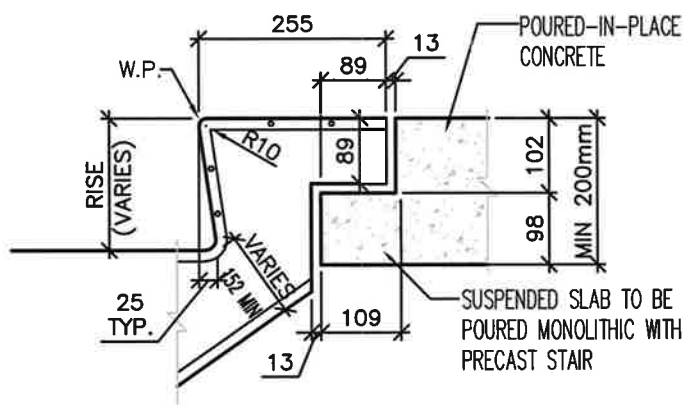
• INFORMATION AND DIMENSIONS ON DRAWINGS AND SPECIFICATIONS ARE TO BE CHECKED BY THE CONTRACTOR BEFORE COMMENCING ANY WORK (REPORT ANY ERRORS AND OMISSIONS DIRECTLY TO THE MANUFACTURER)



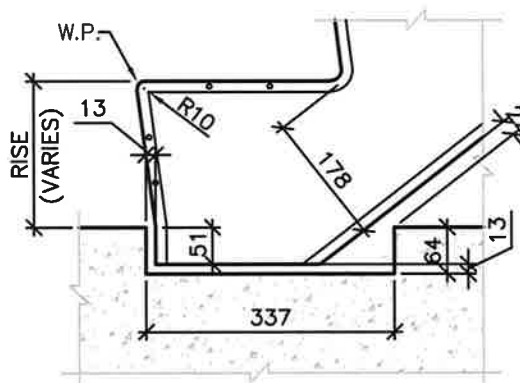
A1 CONNECTION DETAIL
TYPICAL – BOTTOM
SCALE= 1:10



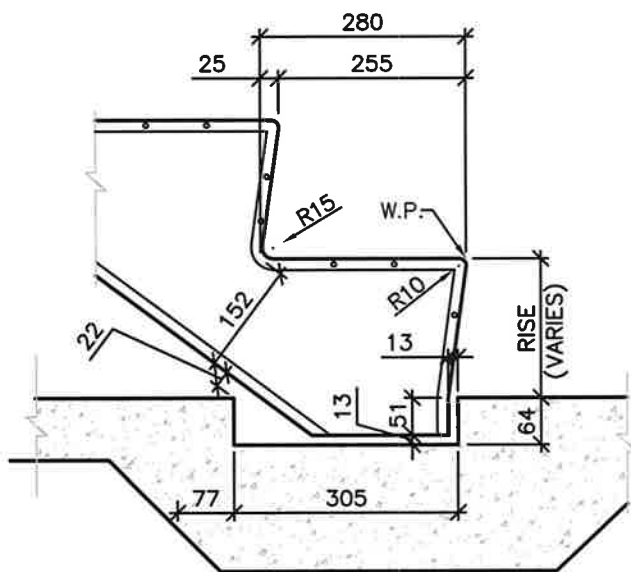
A2 CONNECTION DETAIL
QUICK FIT – BOTTOM
SCALE= 1:10



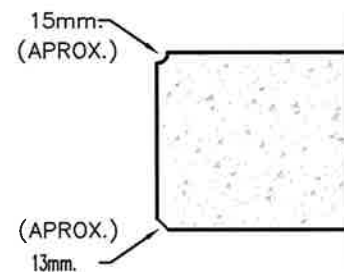
B CONNECTION DETAIL
TYPICAL – TOP
SCALE= 1:10



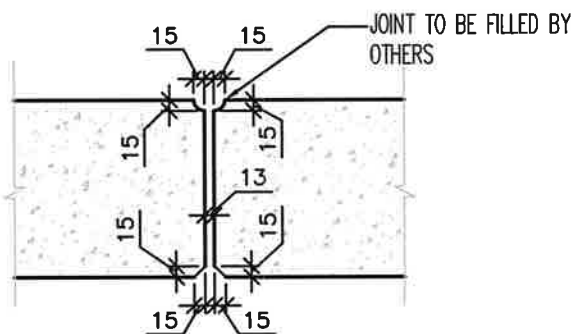
E GROOVE DETAIL SS
SCALE= 1:10



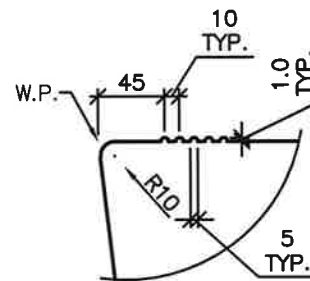
D GROOVE DETAIL SOG
SCALE= 1:10



G STRINGER EDGE CHAMFER
TYPICAL DETAIL
SCALE= 1:5



H STRINGER EDGE CHAMFER
SIDE BY SIDE DETAIL
SCALE= 1:5



F NON-SLIP SAFETY GRIPS
TYPICAL DETAIL
SCALE= 1:5

VERDI FORMING



137 Vinyl Court Woodbridge
L4L 4A3 On Canada
T: 905-850-8430
F: 905-854-2302
TF: 1-800-854-0072
www.stone-link.com

PROJECT: HAMPTON MANOR
25 Baker Hill Blvd, Stouffville, ON

18.AUG.2017	AS PER ARCH. DWGS. IPC JULY.19.2017
Date	Revision

GENERAL NOTES

Drawn: AB	Scale: 1 : 50
Checked: EB	Date: 13.JUN.2017
Job: SL3022017	Dwg No. 03

* EXTENSION STAIR BY GUIDE A -10
NEEDS TO BE INDICATED

• INFORMATION AND DIMENSIONS ON DRAWINGS AND SPECIFICATIONS ARE TO BE CHECKED BY THE CONTRACTOR BEFORE COMMENCING ANY WORK (REPORT ANY ERRORS AND OMISSIONS DIRECTLY TO THE MANUFACTURER)

▲	UNIT DESIGNATION	STAIR A	STAIR B	STAIR C	STAIR D	WEIGHT (LBS)	UNITS/DES.	RISERS
1	(15)*G1087*NP	1				6408	1	15
2	(8)*G1257*QF*ARR	1				3952	1	8
3	(9)*F1087*QF	3	3			3824	6	54
4	(8)*C1087*QF	10	10			3314	20	160
5	(8)*G1087*NP		1			2990	1	8
6	(7)*G1087*QF		1			3418	1	7
7	(8)*G1257*QF*ARL		1			3952	1	8
8	(9)*F1257*QF	1	1			4423	2	18
9	(8)*F1060*NP				1	3315	1	8
10	(8)*F1060*QF				1	3315	1	8
11	(9)*G1087*NP			1		3845	1	9
12	(14)*G1087*QF			1		5981	1	14
	TOTAL	16	17	2	2	-	37	317

CAST-IN PLACE STAIRS

- STAIR D (256.90 TO 258.25)

STAIR DESIGNATION

SPACE SYMBOL

(15)*H1075*NP

INDICATES STAIR WIDTH

FORM DESIGNATION

INDICATES NUMBER OF RISERS

ARL (ADDITIONAL REINFORCEMENT ON THE LEFT SIDE REQ'D TO SUSTAIN ADDED LOADS)
ARR (ADDITIONAL REINFORCEMENT ON THE RIGHT SIDE REQ'D TO SUSTAIN ADDED LOADS)
NP (WITHOUT RAILING WELD PLATE)
RP (RIGHT SIDE RAILING WELD PLATES)
LP (LEFT SIDE RAILING WELD PLATES)
QF (QUICK FIT PROFILE REF. DETAIL A2/03)

NOTE: ALL STAIR TREAD = RUN+25MM NOSING

FORM ID	RISE	RUN
RESIDENTIAL MOULDS		
A	180.0	255.0
B	182.5	255.0
C	185.0	255.0
D	187.5	255.0
E	190.0	255.0
F	192.5	255.0
G	195.0	255.0
H	197.0	255.0
J	200.0	255.0
COMMERCIAL MOULDS		
K	170.0	280.0
L	175.0	280.0
M	180.0	280.0

VERDI FORMING



18.AUG.2017

AS PER ARCH. DWGS. IPC JULY.19.2017

NO

Date

Revision



137 Vinyl Court Woodbridge
L4L 4A3 On Canada
T: 905-850-8430
F: 905-854-2302
TF: 1-800-854-0072
www.stone-link.com

SCHEDULE & GENERAL NOTES

PROJECT: HAMPTON MANOR
25 Baker Hill Blvd, Stouffville, ON

Drawn: AB

Scale: 1 : 50

Checked: EB

Date: 13.JUN.2017

Job: SL3022017

Dwg No.

04





- INFORMATION AND DIMENSIONS ON DRAWINGS AND SPECIFICATIONS ARE TO BE CHECKED BY THE CONTRACTOR BEFORE COMMENCING ANY WORK (REPORT ANY ERRORS AND OMISSIONS DIRECTLY TO THE MANUFACTURER)

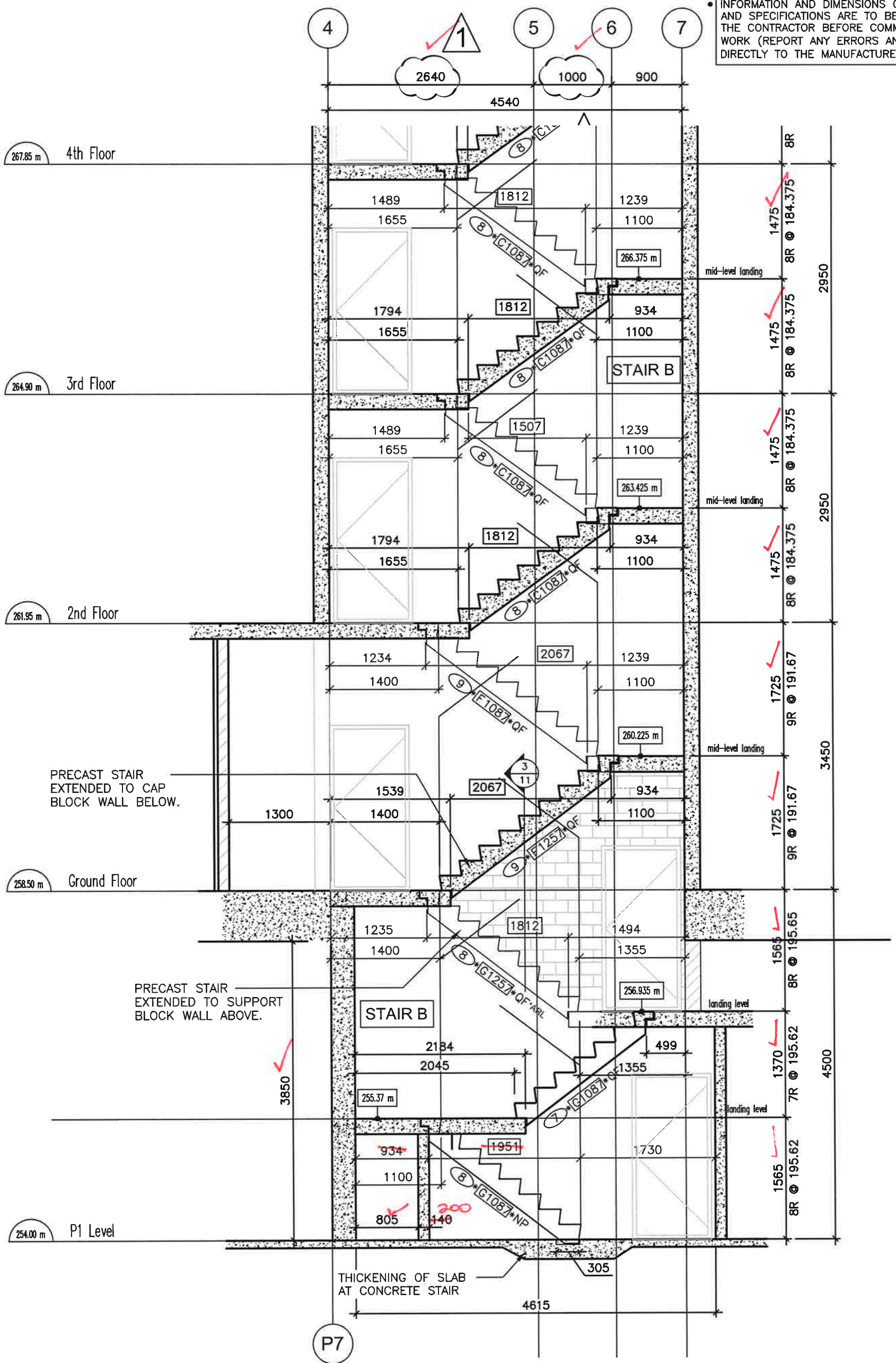
VERDI FORMING




137 Vinyl Court Woodbridge
L4L 4A3 On Canada
T: 905-850-8430
F: 905-854-2302
TF: 1-800-854-0072
www.stone-link.com

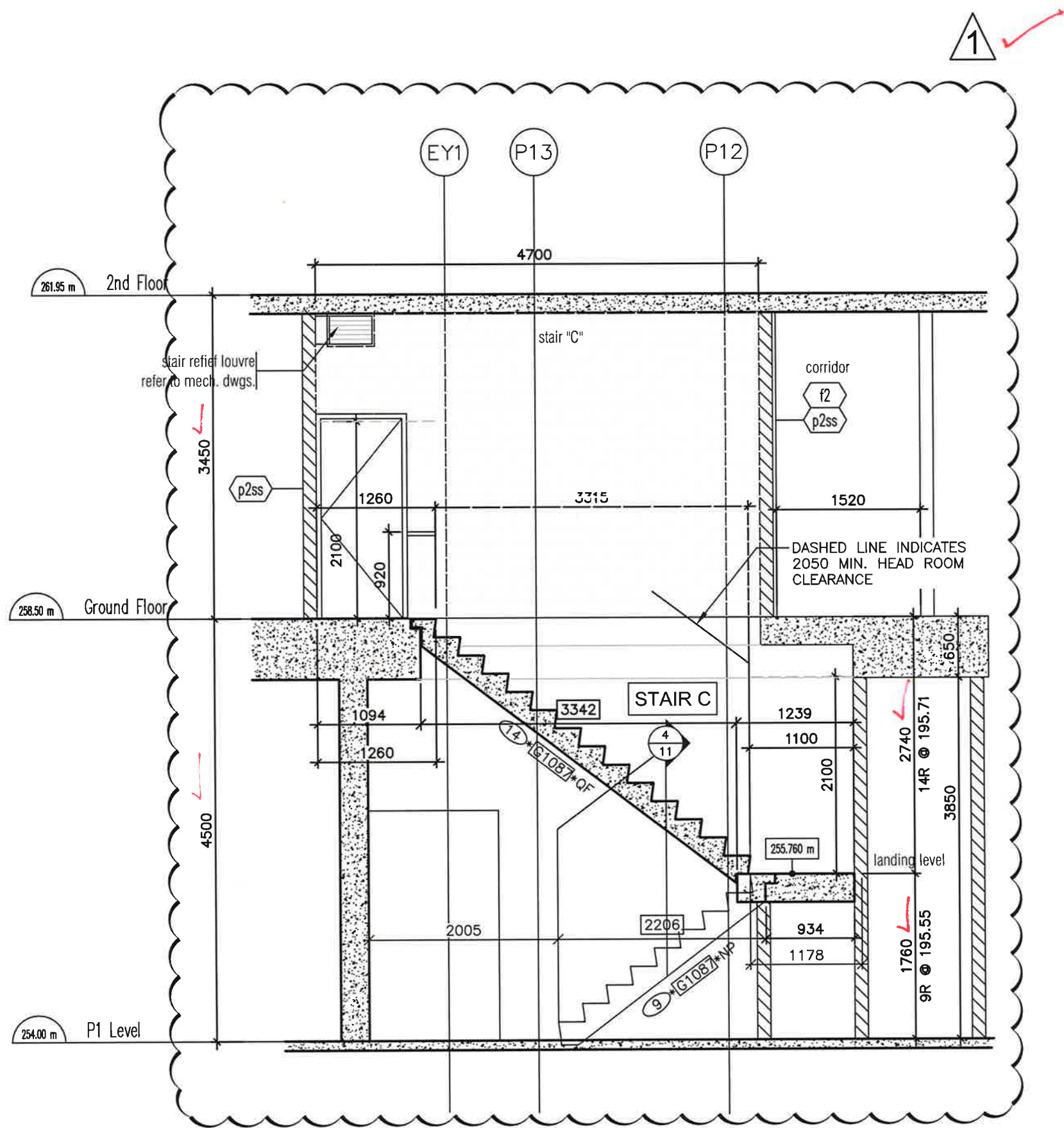
PROJECT: HAMPTON MANOR
25 Baker Hill Blvd, Stouffville, ON

		19
	18.AUG.2017	AS PER ARCH. DWGS. IPC JULY.19.2017
NO	Date	Revision
<p>STAIR SECTIONS : STAIR A</p> <p>4th Floor (267.85 m) – 7th Floor (276.70 m)</p>		
Drawn:	AB	Scale: 1 : 50
Checked:	EB	Date: 13.JUN.2017
Job:	SL3022017	Dwg No. 06 



Drawn: AB	Scale: 1 : 50		
Checked: EB	Date: 13.JUN.2017		
Job: SL3022017	Dwg No.	07	

• INFORMATION AND DIMENSIONS ON DRAWINGS AND SPECIFICATIONS ARE TO BE CHECKED BY THE CONTRACTOR BEFORE COMMENCING ANY WORK (REPORT ANY ERRORS AND OMISSIONS DIRECTLY TO THE MANUFACTURER)



1 SECTION - STAIR 'C'
09 SCALE: 1:50

VERDI FORMING

△	18.AUG.2017	AS PER ARCH. DWGS. IPC JULY.19.2017
NO	Date	Revision



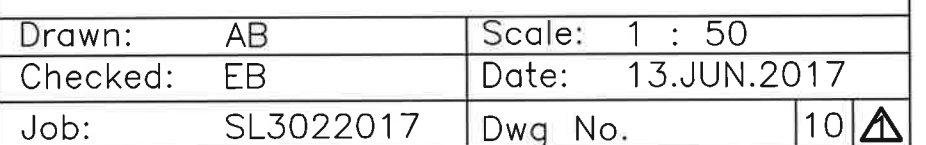
137 Vinyl Court Woodbridge
L4L 4A3 On Canada
T: 905-850-8430
F: 905-854-2302
TF: 1-800-854-0072
www.stone-link.com

STAIR SECTIONS : STAIR C
P1 Level (254.00 m) – Ground Floor (258.50 m)

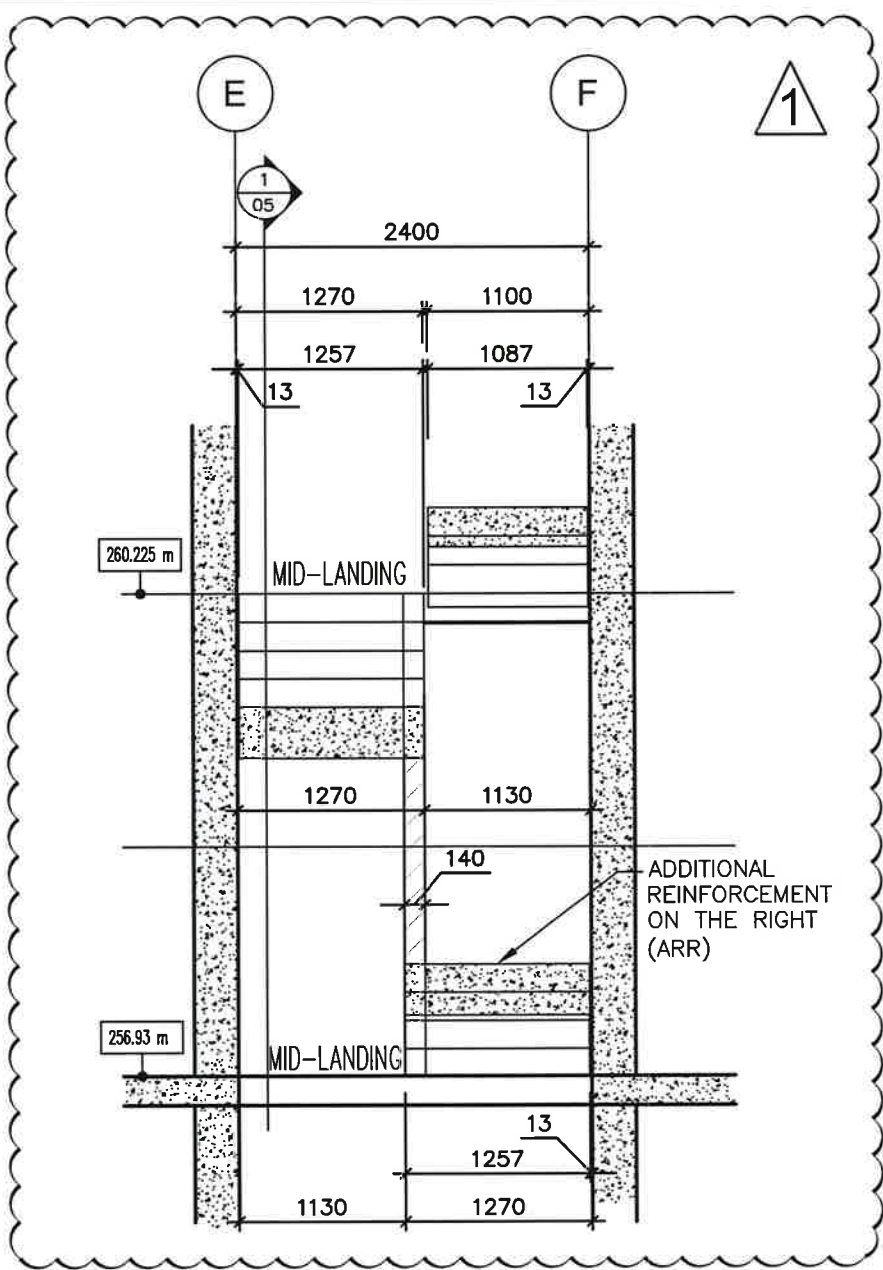
PROJECT: HAMPTON MANOR
25 Baker Hill Blvd, Stouffville, ON

Drawn: AB	Scale: 1 : 50
Checked: EB	Date: 13.JUN.2017
Job: SL3022017	Dwg No. 09 △

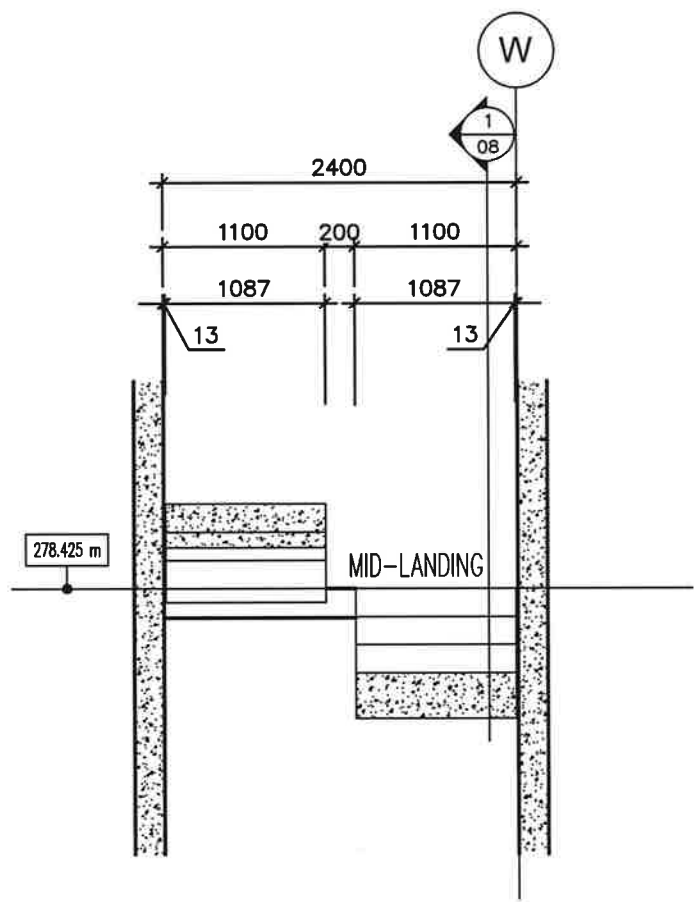
VERDI FORMING



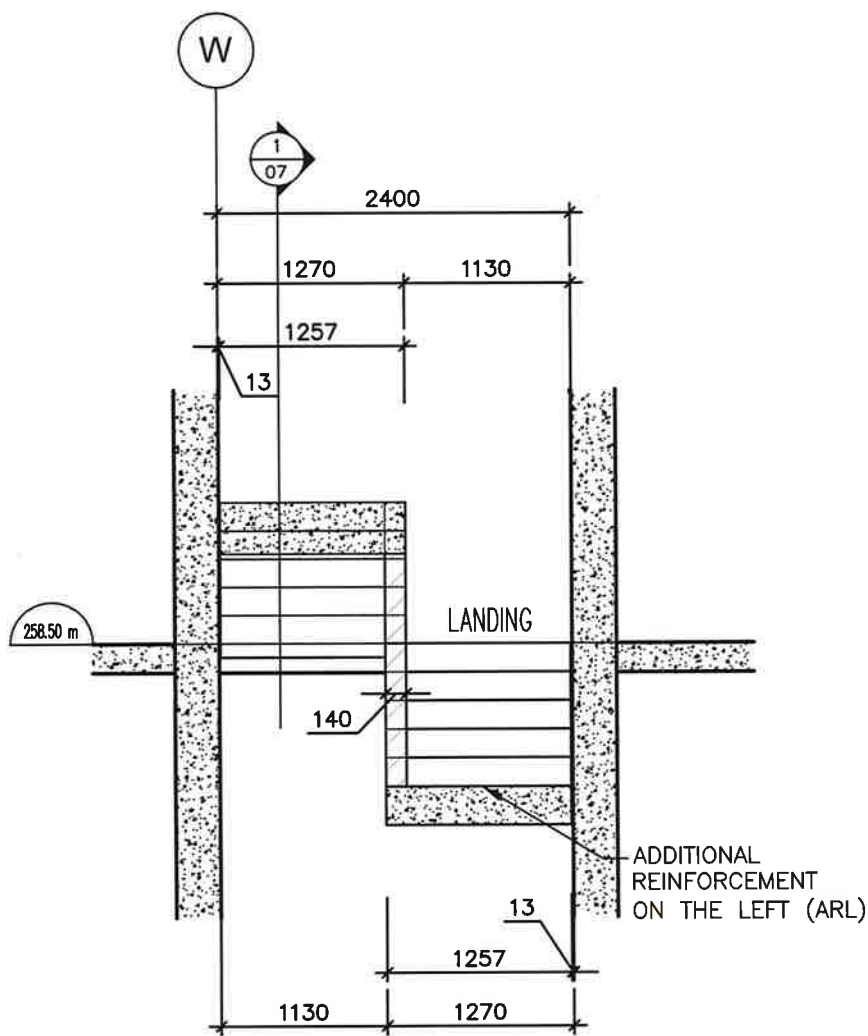
• INFORMATION AND DIMENSIONS ON DRAWINGS AND SPECIFICATIONS ARE TO BE CHECKED BY THE CONTRACTOR BEFORE COMMENCING ANY WORK (REPORT ANY ERRORS AND OMISSIONS DIRECTLY TO THE MANUFACTURER)



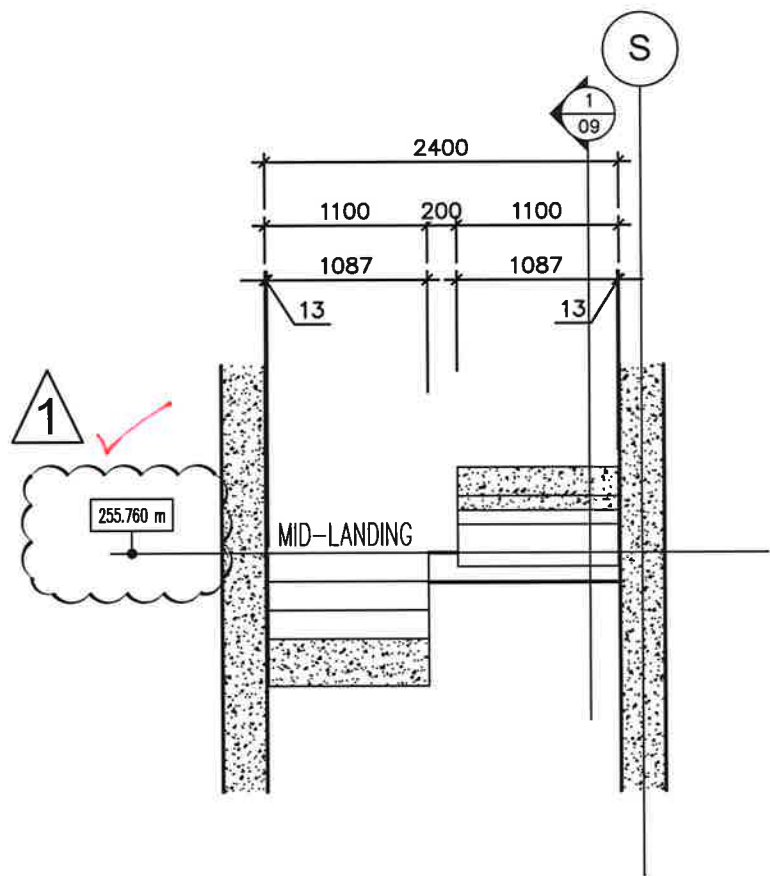
1 CROSS SECTION - STAIR 'A'
11 SCALE: 1:50



2 CROSS SECTION - STAIR 'B'
11 SCALE: 1:50



3 CROSS SECTION - STAIR 'B'
11 SCALE: 1:50



4 CROSS SECTION - STAIR 'C'
11 SCALE: 1:50

VERDI FORMING



18.AUG.2017

AS PER ARCH. DWGS. IPC JULY.19.2017

NO

Date

Revision



137 Vinyl Court Woodbridge
L4L 4A3 On Canada
T: 905-850-8430
F: 905-854-2302
TF: 1-800-854-0072
www.stone-link.com

CROSS-SECTIONS : STAIR A, B, C

PROJECT:

HAMPTON MANOR
25 Baker Hill Blvd, Stouffville, ON

Drawn: AB

Scale: 1 : 50

Checked: EB

Date: 13.JUN.2017

Job: SL3022017

Dwg No.

11



