



Site Instruction

Royal Pine Homes
3550 Langstaff Road, Suite 200
Woodbridge, Ontario
L4L 9G3

SI 15

PROJECT : Hampton Manor
PROJECT No : 1136.13
DATE : March 09, 2018

Attn: Vince Staffieri

Site instructions/memos and Addendums are issued only for the purpose of recording any clarification or interpretation of the contract documents or giving direction on problems resulting from field conditions. These memos are subject to the provisions of the contract documents and unless reviewed with and authorized by the Client, will not affect the contract. Should the Contractor require a change in the contract price or project schedule, he shall submit to the Client, prior to commencement of work outlined in this memo, an itemized proposal for approval.

Title: Noyac Bay Suite revision

A302, A302c - 2nd Floor Overall Plan, 2nd Floor Plan (Enlarged)

- Revising Unit 211 to new layout.

A303 - 3rd Floor Overall Plan

- Revising Units 307 & 311 to new layout.

A304 - 4th Floor Overall Plan

- Revising Units 407 & 411 to new layout.

A305 - 5th Floor Overall Plan

- Revising Units 507 & 511 to new layout.

A306, A306c - 6th Floor Overall Plan, 6th Floor Plan (Enlarged)

- Revising Units 606 & 609 to new layout.

Reason: **Based on Client's Request**

References: A302, A302c, A303, A304, A305, A306 and A306c.

GRAZIANI + CORAZZA
ARCHITECTS INC

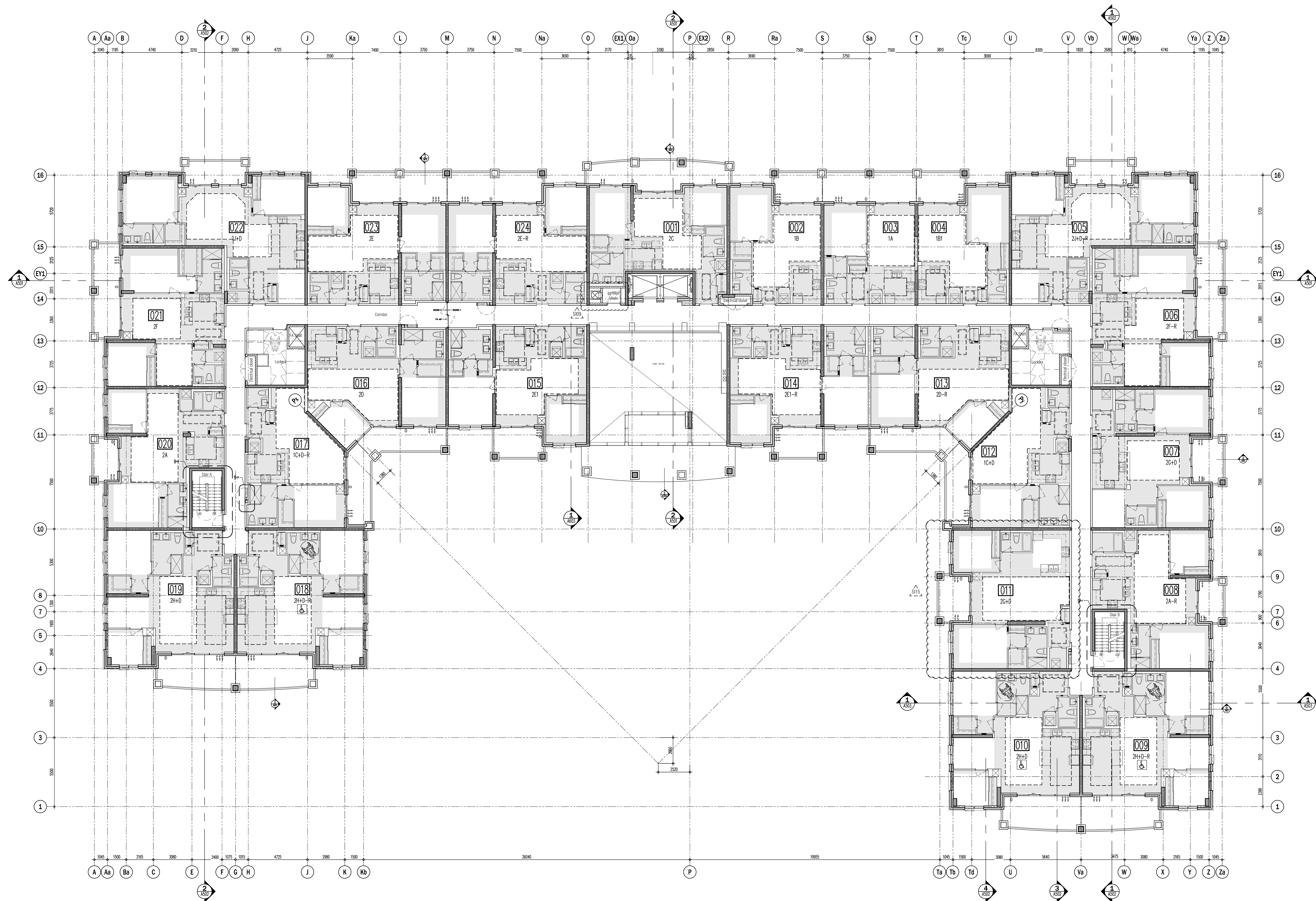
G. Colangelo Diploma Arch. Technology
Associate. Director of Contract Documents

Distribution:

Royal Pine Homes
Dineen Construction
Dineen Construction
Dineen Construction

Cinzia Caruso
Dominic Salvati
Jeff Ellis
Eric Wright

cinzia@royalpinehomes.com
dsalvati@dineen.com
jellis@dineen.com
rwright@dineen.com



CEILING HEIGHTS			
FLOOR	FOYER & KITCHEN	BULKHEADS	LIVING/ DINING/DEN/BEDROOM
GRD	2950	2750	2950
2ND	2600	2450	SLAB AT 2750
3RD	2600	2450	SLAB AT 2750
4TH	2600	2450	SLAB AT 2750
5TH	2600	2450	SLAB AT 2750 / 2700
6TH	2600	2450	SLAB AT 2750 / 2700
7TH	2900	2750	3050

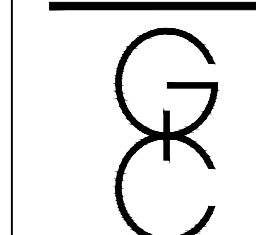
This drawing, as an instrument of service, is provided by and is the property of Göttsche + Göttsche Architects Inc. The contractor must verify and accept responsibility for all dimensions and conditions on site and must notify Göttsche + Göttsche Architects Inc. of any variations from the supplied information. Göttsche + Göttsche Architects Inc. is not responsible for the accuracy of survey, structural, mechanical, electrical, etc., engineering information shown on this drawing. Refer to the appropriate engineering drawings before proceeding with the work. This drawing must conform to all applicable codes and requirements of the authorities having jurisdiction. Unless otherwise noted, no investigation has been undertaken or reported on by this office to register to the environmental condition of this site. This drawing is not to be used for construction purposes until countersigned by the Architect.

This drawing is not to be scaled. All architectural symbols indicated on this drawing are graphic representations only.

- | | | | |
|-----|--------------|---|------|
| 01. | FEB.24.2014 | issued to city for SPA | B.G. |
| 02. | JUL.9.2014 | re-issued to city for SPA | B.G. |
| 03. | SEP.1.2014 | re-issued to city for SPA | B.G. |
| 04. | JAN.15.2015 | re-issued to city for SPA | B.G. |
| 05. | MAR.15.2015 | issued for tender | B.G. |
| 06. | OCT.28.2016 | issued for building permit | B.G. |
| 07. | MAY.10.2017 | re-issued for building permit | B.G. |
| 08. | MAY.10.2017 | Issued for Footings and Foundation Permit | B.G. |
| 09. | JULY.19.2017 | Progress for Construction | B.G. |
| 10. | AUG.09.2017 | Issued for Construction | B.G. |
| 12. | OCT.25.2017 | Revision to Envelope | B.G. |

- | | | | |
|-----|-------------|---------------------------------|----|
| 04. | MAR.09.2018 | S15 NOYAC BAY SUITE REVISION | BG |
| 03. | FEB.12.2018 | S13 REVISING OPERABLE WINDOWS | BG |
| 02. | DEC.07.2017 | S10 SHOWING BARRIER-FREE SYMBOL | BG |
| 01. | DEC.07.2017 | S09 GARAGE CHUTE PIPE SPACE | BG |

issued for revisions



GRAZIANI
+
CORAZZA
ARCHITECTS INC. + +

PROPOSED RESIDENTIAL DEVELOPMENT

25 BAKER HILL BLVD.

STOUFFVILLE ROYAL PINES HOMES ONTARIO

Project Architect: B.GRAZIANI

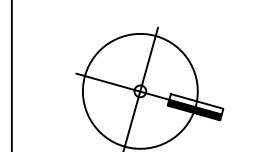
Assistant Designer: R. LINCOLN
Drawn By: S.G.

Checked By: G.COLANGELO/D.BIASE
Print Date: Nov. 7, 2017

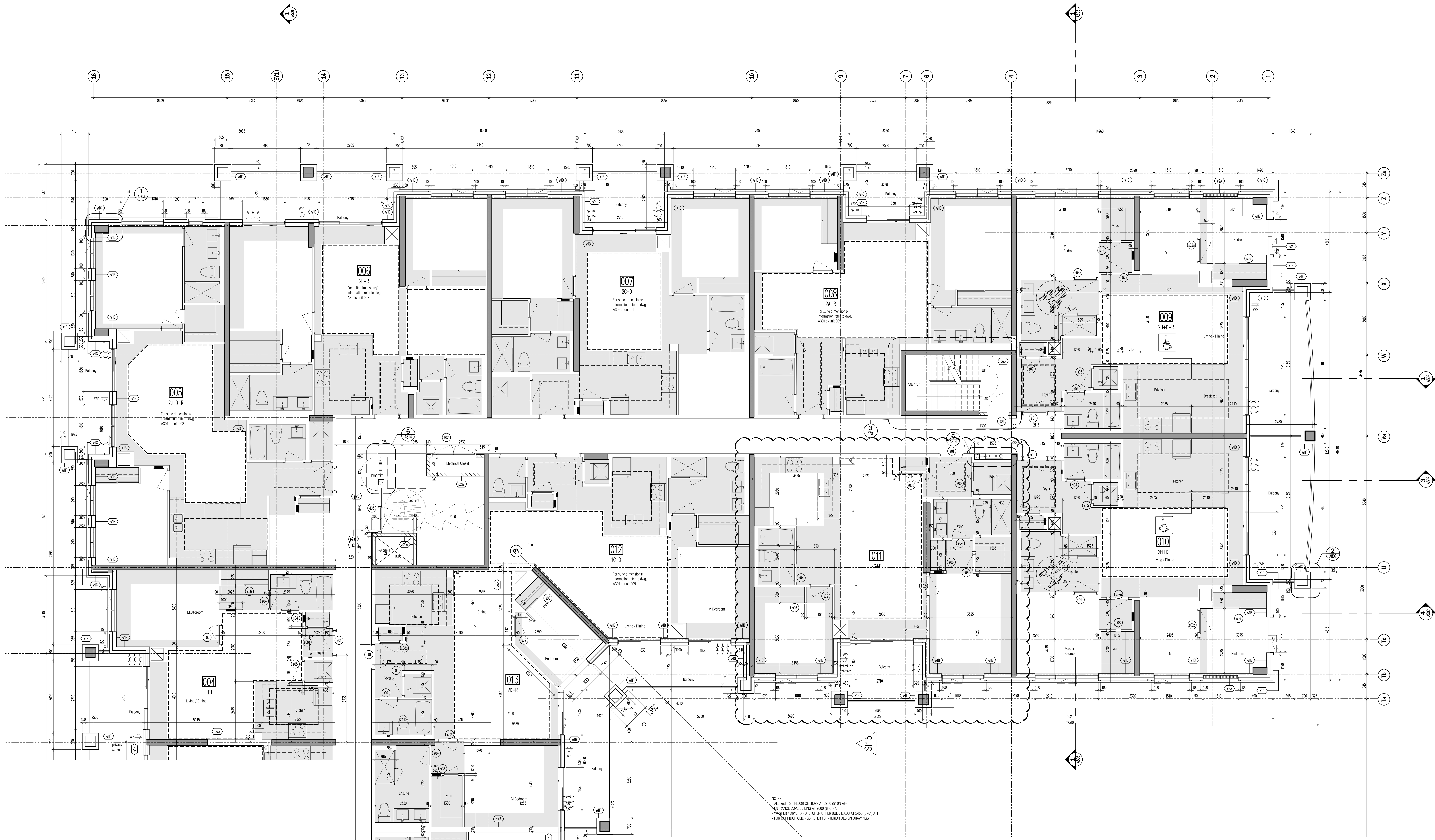
Plot Date:	Nov. 7, 2017
Job #	1136.13

2nd FLOOR PLAN

OVERALL PLAN


1:100 A302

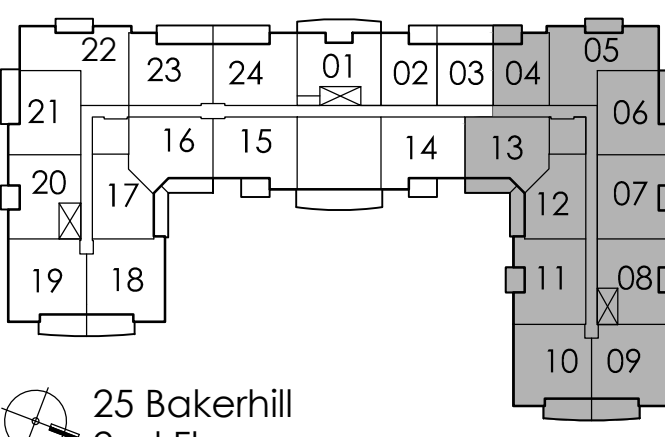
TITLEBLOCK SIZE: 915 x 1400



NOTES:
- ALL 2ND - 5TH FLOOR CEILINGS AT 2750 (8'-0") AFF
- ENTRANCE CORE CEILING AT 2600 (8'-0") AFF
- VANGUARD DRIVE AND KITCHEN UPPER BULKHEADS AT 2450 (8'-0") AFF
- FOR NON-RESIDENTIAL DEVELOPMENT

CEILING HEIGHTS			
FLOOR	FOYER & KITCHEN	BULKHEADS	LIVING/ DINING/DEN/BEDROOM
GRD	2950	2750	2950
2ND	2600	2450	SLAB AT 2750
3RD	2600	2450	SLAB AT 2750
4TH	2600	2450	SLAB AT 2750
5TH	2600	2450	SLAB AT 2750 / 2700
6TH	2600	2450	SLAB AT 2750 / 2700
7TH	2900	2750	3050

- This drawing, as an instrument of service, is provided by and is the property of G. Grazianni Architects Inc. The architect must retain and accept responsibility for all dimensions and conditions on site and must notify G. Grazianni Architects Inc. of any variations from the approved information. G. Grazianni Architects Inc. is not responsible for the accuracy of any dimensions, structural, mechanical, electrical, etc., information shown on this drawing. The architect warrants that the information shown on this drawing is true and correct to the best of his knowledge and belief. Construction must conform to all applicable codes and requirements of the authorities having jurisdiction. Other relevant codes or regulations have been identified or reported on by this office in regard to the environmental condition of this site. This drawing is not to be used for construction purposes until counterchecked by the architect.
- | | | |
|------------------|---|------|
| 01. FEB.28.2014 | Issued to city for SPA | B.G. |
| 02. JUL.9.2014 | re-issued to city for SPA | B.G. |
| 03. SEP.11.2014 | re-issued to city for SPA | B.G. |
| 04. JAN.15.2015 | re-issued to city for SPA | B.G. |
| 05. MAR.15.2015 | Issued for tender | B.G. |
| 06. DEC.28.2016 | Issued for building permit | B.G. |
| 07. MAY.10.2017 | re-issued for building permit | B.G. |
| 08. MAY.10.2017 | Issued for Footings and Foundation Permit | B.G. |
| 10. JULY.19.2017 | Progress for Construction | B.G. |
| 11. AUG.09.2017 | Issued for Construction | B.G. |
| 12. OCT.25.2017 | Revision to Envelope | B.G. |



- | | | |
|-----------------|------------------------------------|------|
| 04. MAR.28.2018 | 315 NOTAC BAY SUITE REVISION | B.G. |
| 05. FEB.12.2018 | 315 REVISION OPERABLE WINDOWS | B.G. |
| 02. DEC.07.2017 | 310 SHOWING BARRIER-FREE SYMBOL | B.G. |
| 01. AUG.21.2017 | 303 SANDBLAST PRECAST ON BALCONIES | B.G. |
- Issued for revisions

GRAZIANI
CORAZZA
ARCHITECTS INC.

1327 Denison Street, Suite 102, Mississauga, Ontario L4Y 1C1
Phone: 905.705.2621 Fax: 905.705.2644 www.grazianni.com

PROPOSED RESIDENTIAL DEVELOPMENT

25 BAKER HILL BLVD.

ROYAL PINES HOMES

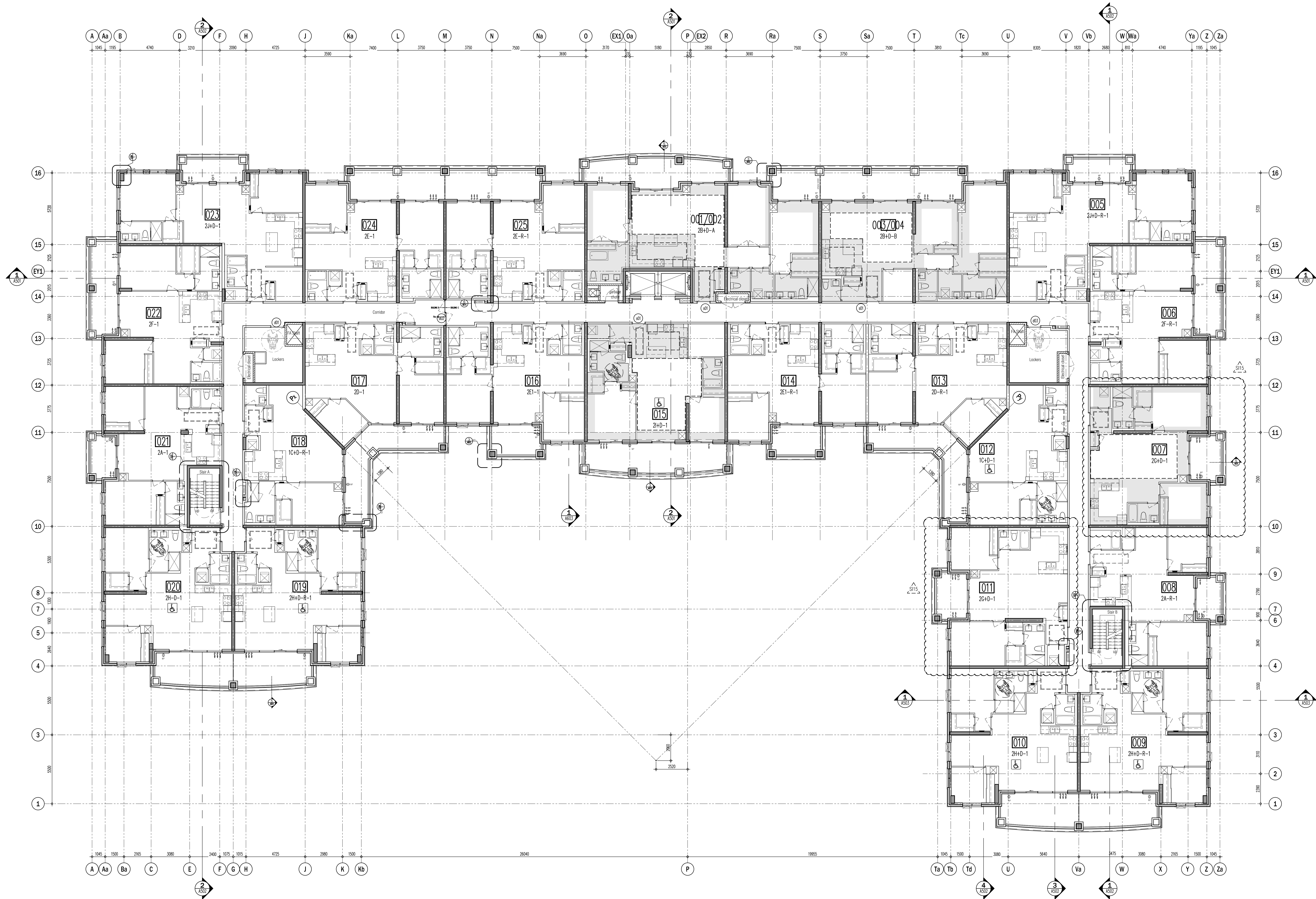
STONEYVILLE ONTARIO

Project Architect: B. GRAZIANI
Assistant Designer: R. LINCOLN
Drawn By: S.G.
Checked By: G. COLANGELO/D.BIASE
Plot Date: Nov. 7, 2017
Job #: 1134.13

**2ND FLOOR ENLARGED
PART PLAN**

1:50 A302c

TITLEBLOCK SIZE: 915 x 1400



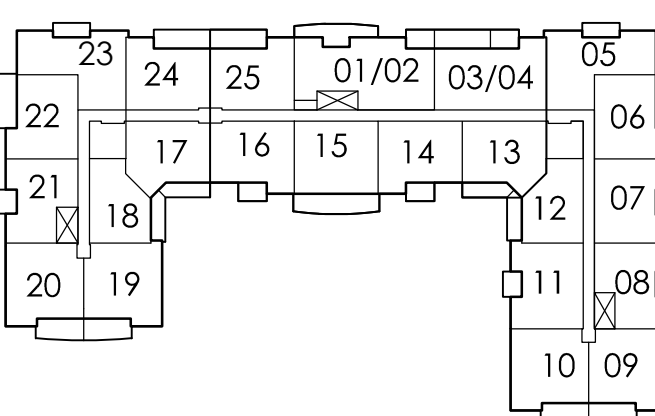
Note: Suites are the same as 2nd floor with the exception of units 001/002, 003/004 and 015. For other suite dimensions / information, please refer to dwgs A302b-d.

CEILING HEIGHTS			
FLOOR	FOYER & KITCHEN	BULKHEADS	LIVING/ DINING/DEN/BEDROOM
GRD	2950	2750	2950
2ND	2600	2450	SLAB AT 2750
3RD	2600	2450	SLAB AT 2750
4TH	2600	2450	SLAB AT 2750
5TH	2600	2450	SLAB AT 2750 / 2700
6TH	2600	2450	SLAB AT 2750 / 2700
7TH	2900	2750	3050

This drawing, as an instrument of service, is provided by and is the property of GRAZIANI + CORAZZA ARCHITECTS INC. The architect must verify and accept responsibility for all dimensions and conditions on site and must notify GRAZIANI + CORAZZA ARCHITECTS INC. of any variations from the approved information. GRAZIANI + CORAZZA ARCHITECTS INC. is not responsible for the accuracy of survey, structural, mechanical, electrical, etc., engineering information shown on this drawing. While the structural engineering drawings are prepared in accordance with the Building Code of Ontario, the architect must verify the accuracy and requirements of the authorities having jurisdiction. Other relevant codes or regulations may have been adopted or reported on by this office in regards to the environmental condition of this site. This drawing is not to be used for construction purposes until coordinated by the architect.

This drawing is not to be scaled. All architectural symbols indicated on this drawing are graphic representations only.

- | | | | |
|-----|--------------|---|------|
| 01. | FEB.28.2014 | issued to city for SPA | B.G. |
| 02. | JUL.9.2014 | re-issued to city for SPA | B.G. |
| 03. | SEP.11.2014 | re-issued to city for SPA | B.G. |
| 04. | JAN.15.2015 | re-issued to city for SPA | B.G. |
| 05. | MAR.15.2015 | issued for tender | B.G. |
| 06. | DEC.28.2016 | issued for building permit | B.G. |
| 07. | MAY.10.2017 | re-issued for building permit | B.G. |
| 08. | MAY.10.2017 | issued for Footings and Foundation Permit | B.G. |
| 10. | JULY.19.2017 | Progress for Construction | B.G. |
| 11. | AUG.09.2017 | issued for Construction | B.G. |
| 12. | OCT.25.2017 | Revision to Envelope | B.G. |



- | | | | |
|-----|-------------|----------------------------------|------|
| 06. | MAR.29.2018 | 315 NOTIFY BAY SUITE REVISION | B.G. |
| 05. | FEB.12.2018 | 315 REVIEWING OPERABLE WINDOWS | B.G. |
| 04. | DEC.07.2017 | 310 SHOWING BARRIER-FREE SYMBOL | B.G. |
| 03. | DEC.07.2017 | 309 GARAGE CHUTE PPE SPACE | B.G. |
| 02. | AUG.24.2017 | 302-R1 REVISION TO SUITE NUMBERS | B.G. |
| 01. | AUG.18.2017 | 302 REVISION TO SUITE NUMBERS | B.G. |

issued for revisions

GRAZIANI + CORAZZA ARCHITECTS INC.

1327 Sheppard Ave. E. Suite 105, Scarborough, Ontario M1S 1C1
Phone: (416) 291-2621 Fax: (416) 291-2624 www.graziandcorazza.com

25 BAKER HILL BLVD.

ROYAL PINES HOMES

STUFFVILLE ONTARIO

Project Architect: B. GRAZIANI

Assistant Designer: R. LINCOLN

Drawn By: S.G.

Checked By: G. COLANGELO/D.B.ASE

Plot Date: Nov. 7, 2017

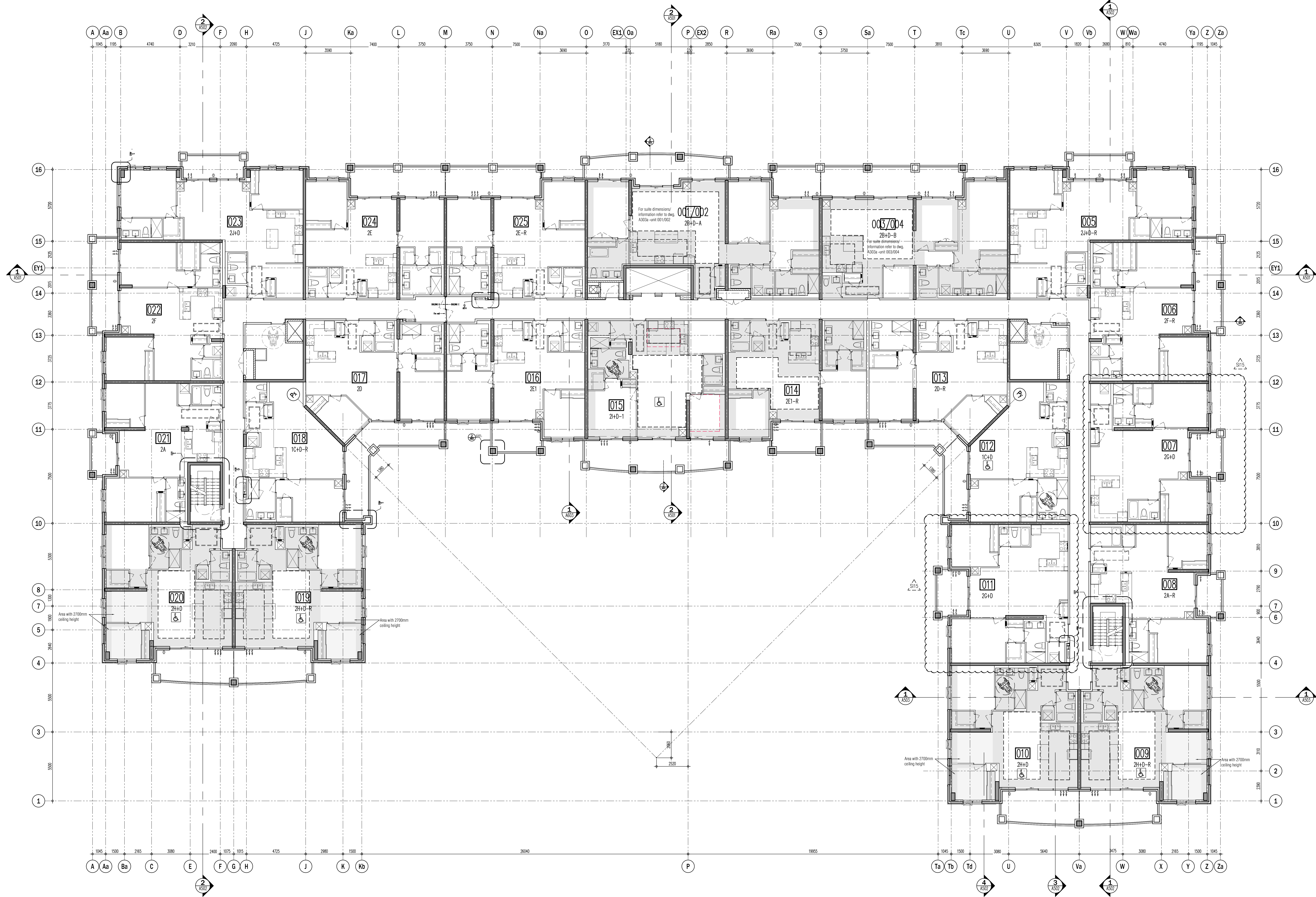
Job #: 1134.13

3rd FLOOR PLAN

OVERALL PLAN

1:100 A303

TITLEBLOCK SIZE: 915 x 1400

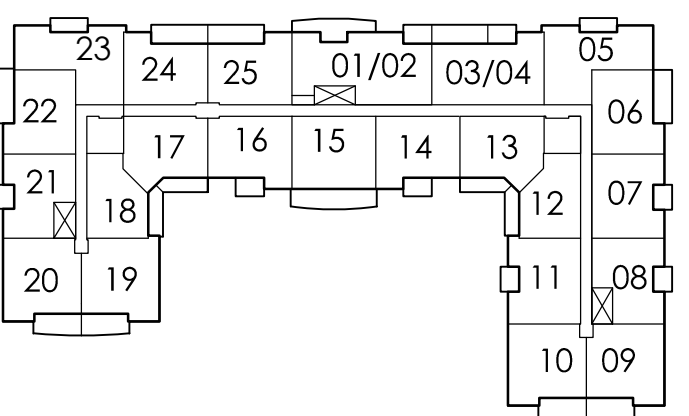


Note: Suites are the same as 2nd floor with the exception of units 001/002, 003/004 and 015. For other suite dimensions / information, please refer to dwgs A302b-d.

CEILING HEIGHTS			
FLOOR	FOYER & KITCHEN	BULKHEADS	LIVING/ DINING/DEN/BEDROOM
GRD	2950	2750	2950
2ND	2600	2450	SLAB AT 2750
3RD	2600	2450	SLAB AT 2750
4TH	2600	2450	SLAB AT 2750
5TH	2600	2450	SLAB AT 2750 / 2700
6TH	2600	2450	SLAB AT 2750 / 2700
7TH	2900	2750	3050

This drawing, as an instrument of service, is provided by and is the property of G. Graziani Architects Inc. The architect must verify and accept responsibility for all dimensions and conditions on site and must notify G. Graziani Architects Inc. of any variations from the approved information. G. Graziani Architects Inc. is not responsible for the accuracy of any dimensions, materials, methods, etc., originating from the drawings. The architect must comply with all applicable codes and requirements of the authorities having jurisdiction. Other drawings shall be reviewed and approved or rejected as by this office in regard to the environmental condition of this site. This drawing is not to be used for construction purposes until counterchecked by the architect.

- This drawing is not to be used for construction purposes until counterchecked by the architect.
- | | | | |
|-----|-------------|---|------|
| 01. | FEB.28.2014 | issued to city for SPA | B.G. |
| 02. | JUL.9.2014 | re-issued to city for SPA | B.G. |
| 03. | SEP.11.2014 | re-issued to city for SPA | B.G. |
| 04. | JAN.15.2015 | re-issued to city for SPA | B.G. |
| 05. | MAR.15.2015 | issued for tender | B.G. |
| 06. | DEC.28.2016 | issued for building permit | B.G. |
| 07. | MAY.10.2017 | re-issued for building permit | B.G. |
| 08. | MAY.10.2017 | issued for Footings and Foundation Permit | B.G. |
| 10. | JUL.19.2017 | Progress for Construction | B.G. |
| 11. | AUG.09.2017 | issued for Construction | B.G. |
| 12. | OCT.25.2017 | Revision to Envelope | B.G. |



- | | | | |
|-----|-------------|----------------------------------|------|
| 06. | MAR.09.2018 | 015 NOTAC BAY SUITE REVISION | B.G. |
| 05. | FEB.12.2018 | 015 REVIEWING OPERABLE WINDOWS | B.G. |
| 04. | DEC.07.2017 | 010 SHOWING BARRIER-FREE SYMBOL | B.G. |
| 03. | DEC.07.2017 | 009 GARBAGE CHUTE PPE SPACE | B.G. |
| 02. | AUG.24.2017 | 002-R1 REVISION TO SUITE NUMBERS | B.G. |
| 01. | AUG.18.2017 | 002 REVISION TO SUITE NUMBERS | B.G. |

issued for revisions

G. GRAZIANI
CORAZZA
ARCHITECTS INC.

1327 Denison Street, Suite 101, Richmond Hill, Ontario L4B 1C1
Phone: 905.765.2621 Fax: 905.765.3544 www.gg-architect.com

PROPOSED RESIDENTIAL DEVELOPMENT

25 BAKER HILL BLVD.

ROYAL PINES HOMES

STUFFVILLE ONTARIO

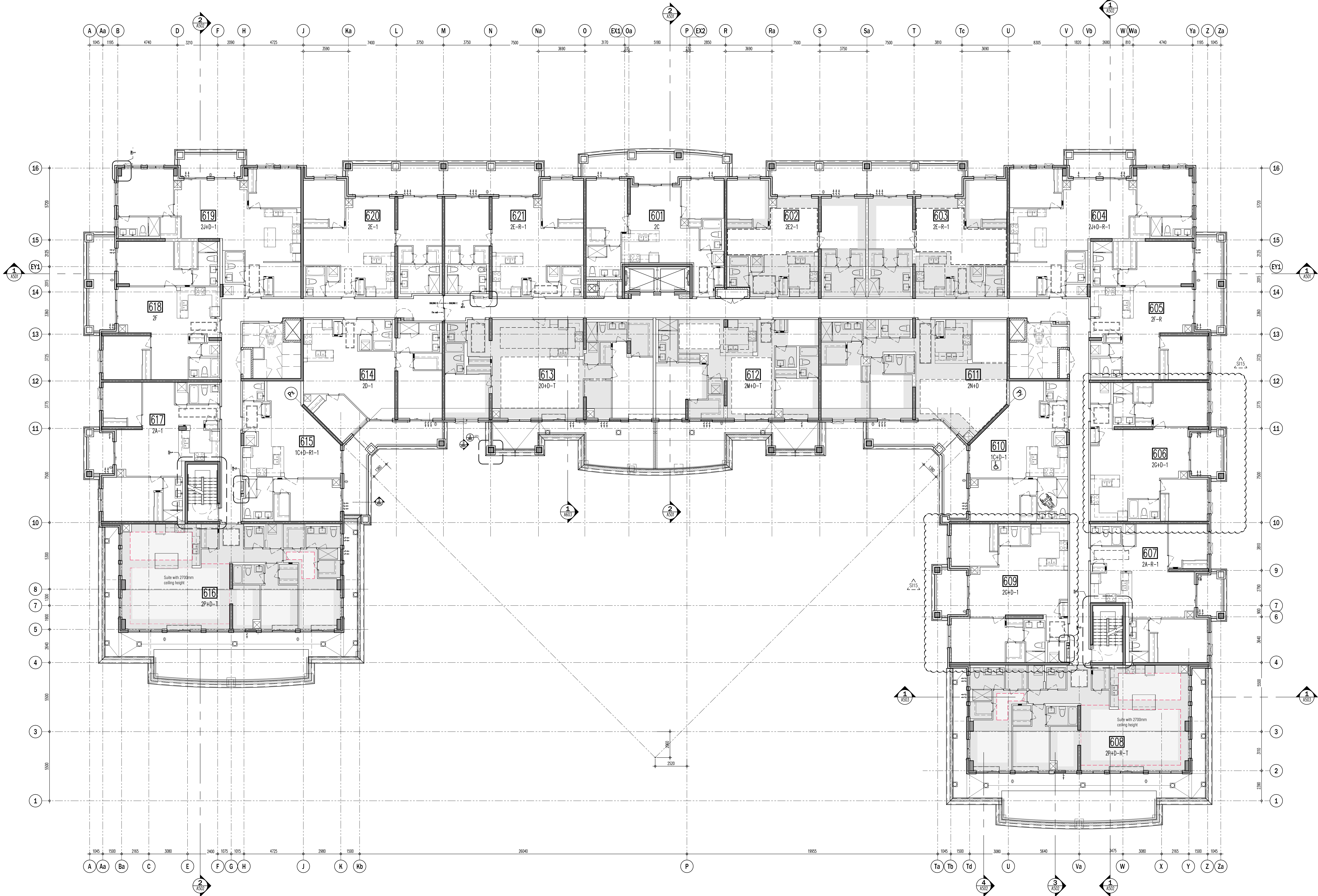
Project Architect: B. GRAZIANI
Assistant Designer: R. LINCOLN
Drawn By: S.G.
Checked By: G. COLANGELO/D.BIASE
Plot Date: Nov. 7, 2017
Job #: 1134.13

5th FLOOR PLAN
OVERALL PLAN

1:100 A305

TITLEBLOCK SIZE: 915 x 1400

CEILING HEIGHTS			
FLOOR	FOYER & KITCHEN	BULKHEADS	LIVING/ DINING/DEN/BEDROOM
GRD	2950	2750	2950
2ND	2600	2450	SLAB AT 2750
3RD	2600	2450	SLAB AT 2750
4TH	2600	2450	SLAB AT 2750
5TH	2600	2450	SLAB AT 2750 / 2700
6TH	2600	2450	SLAB AT 2750 / 2700
7TH	2900	2750	3050



This drawing, as an instrument of service, is provided by and is the property of Grazianni & Corazza Architects Inc. The architect must verify and accept responsibility for all dimensions and conditions on site and must notify Grazianni & Corazza Architects Inc. of any variations from the approved drawings. Grazianni & Corazza Architects Inc. is not responsible for the accuracy of survey, structural, mechanical, electrical, etc., engineering information shown on this drawing. All dimensions are approximate and may vary from the actual. Construction must conform to all applicable codes and requirements of the authority having jurisdiction. Other drawings shall be reviewed and approved or rejected as by this office in regard to the environmental condition of this site. This drawing is not to be used for construction purposes until counterchecked by the architect.

This drawing is not to be used for construction purposes until counterchecked by the architect.

01. FEB.28.2014	issued to city for SPA	B.G.
02. JUL.9.2014	re-issued to city for SPA	B.G.
03. SEP.11.2014	re-issued to city for SPA	B.G.
04. JAN.15.2015	re-issued to city for SPA	B.G.
05. MAR.15.2015	issued for tender	B.G.
06. DEC.28.2016	issued for building permit	B.G.
07. MAY.10.2017	re-issued for building permit	B.G.
08. MAY.10.2017	issued for Footings and Foundation Permit	B.G.
10. JUL.19.2017	Progress for Construction	B.G.
11. AUG.09.2017	issued for Construction	B.G.
12. OCT.25.2017	Revision to Envelope	B.G.

04. MAR.28.2018 315 NOTIFY BAY SUITE REVISION BG
03. FEB.12.2018 313 REVISING OPERABLE WINDOWS BG
02. DEC.07.2017 310 SHOWING BARRIER-FREE SYMBOL BG
01. DEC.07.2017 309 GARAGE CHUTE PIPE SPACE BG

issued for revisions

GRAZIANI
CORAZZA
ARCHITECTS INC.

1330 Sheppard Ave. E. Suite 101, Richmond Hill, ON L4B 1C1
Phone: 905.705.2621 Fax: 905.705.2644 www.grazianni.com

PROPOSED RESIDENTIAL DEVELOPMENT

25 BAKER HILL BLVD.

ROYAL PINES HOMES

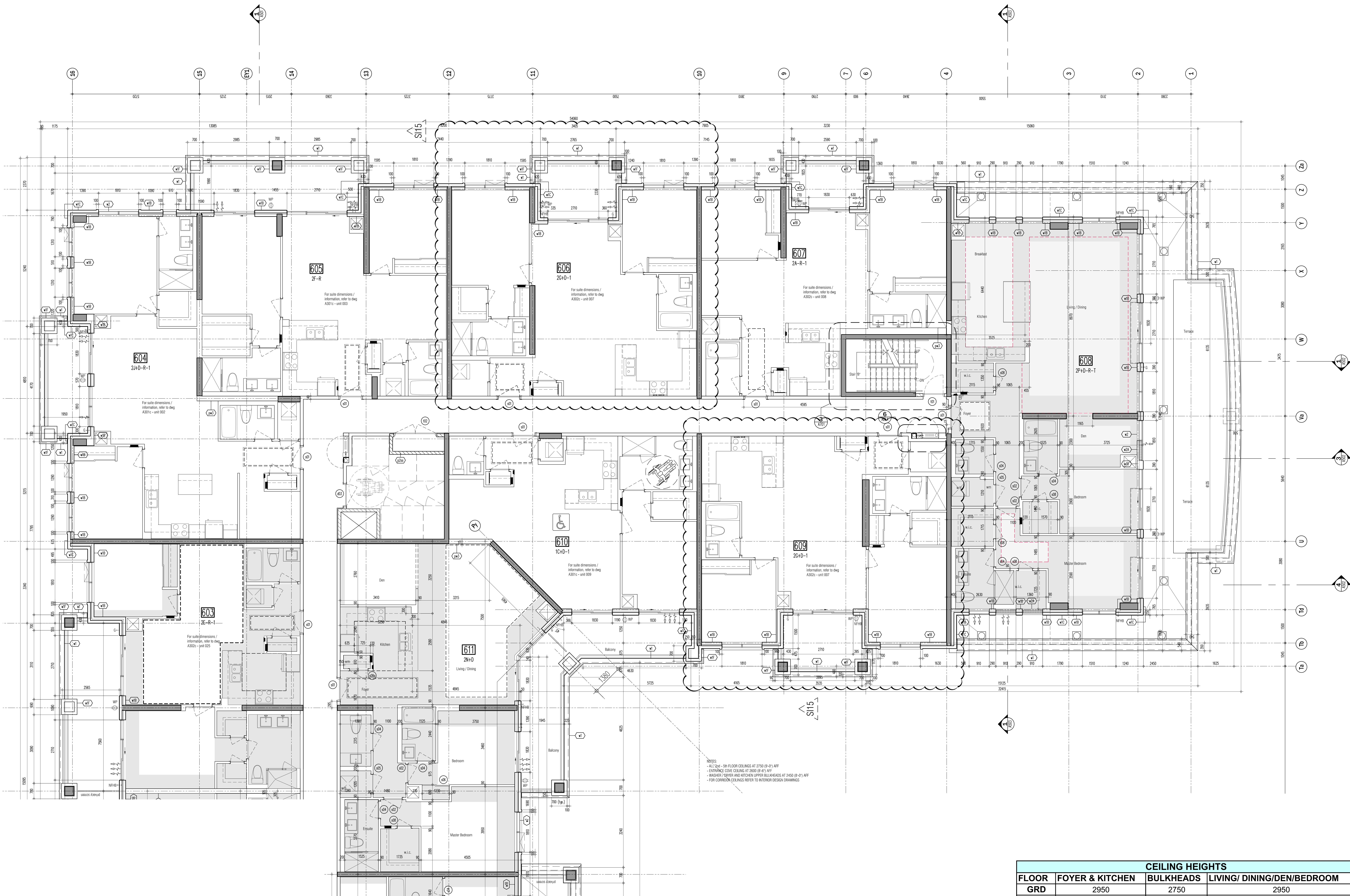
STUFFVILLE ONTARIO

Project Architect: B. GRAZIANI
Assistant Designer: R. LINCOLN
Drawn By: S.G.
Checked By: G. COLANGELO/D. BIASE
Plot Date: Nov. 7, 2017
Job #: 1134.13

6TH FLOOR PLAN
OVERALL PLAN

1:100 A306

TITLEBLOCK SIZE: 915 x 1400



NOTES:
- ALL 2ND - 5TH FLOOR CEILINGS AT 2750 (8'-0") AFF
- ENTRANCE DOVE CEILING AT 2800 (8'-6") AFF
- WASHER / DRYER AND KITCHEN UPPER BLANKETS AT 2450 (8'-0") AFF
- FOR CORRIDOR CEILINGS REFER TO INTERIOR DESIGN DRAWINGS

CEILING HEIGHTS			
FLOOR	FOYER & KITCHEN	BULKHEADS	LIVING/ DINING/DEN/BEDROOM
GRD	2950	2750	2950
2ND	2600	2450	SLAB AT 2750
3RD	2600	2450	SLAB AT 2750
4TH	2600	2450	SLAB AT 2750
5TH	2600	2450	SLAB AT 2750 / 2700
6TH	2600	2450	SLAB AT 2750 / 2700
7TH	2900	2750	3050

This drawing, as an instrument of service, is provided by and is the property of G.R.A.Z.I.A.N.I. & CORAZZANI ARCHITECTS INC. The architect must verify and accept responsibility for all dimensions and conditions on site and must notify G.R.A.Z.I.A.N.I. & CORAZZANI ARCHITECTS INC. of any variations from the approved information. G.R.A.Z.I.A.N.I. & CORAZZANI ARCHITECTS INC. is not responsible for the accuracy of survey, structural, mechanical, electrical, etc., engineering information shown on this drawing. While the architectural information is being prepared, the architect is not responsible for the accuracy of any information shown on this drawing. Construction must conform to all applicable codes and requirements of the authorities having jurisdiction. Other drawings shall be investigated for any variations or reported on by this office in regard to the environmental condition of this site. This drawing is not to be used for construction purposes until counterchecked by the architect.

This drawing is not to be scaled. All architectural symbols indicated on this drawing are graphic representations only.

01. FEB.28.2014	issued to city for SPA	B.G.
02. JUL.9.2014	re-issued to city for SPA	B.G.
03. SEP.11.2014	re-issued to city for SPA	B.G.
04. JAN.15.2015	re-issued to city for SPA	B.G.
05. MAR.15.2015	issued for tender	B.G.
06. DEC.28.2016	issued for building permit	B.G.
07. MAY.10.2017	re-issued for building permit	B.G.
08. MAY.10.2017	issued for Footings and Foundation Permit	B.G.
09. JUL.19.2017	Progress for Construction	B.G.
10. AUG.09.2017	issued for Construction	B.G.
11. OCT.25.2017	Revision to Envelope	B.G.

04. MAR.09.2018 315 NOTAC BAY SUITE REVISION B.G.
03. FEB.12.2018 313 REVISING OPERABLE WINDOWS B.G.
02. DEC.07.2017 310 SHOWING OPERABLE-FREE SYMBOL B.G.
01. AUG.21.2017 303 SANDBLAST PRECAST ON BALCONIES B.G.

issued for revisions

G.R.A.Z.I.A.N.I. & CORAZZANI ARCHITECTS INC.
1327 Denison Street, Suite 102, Mississauga, Ontario L4Y 1C1
Phone: (905) 765-2621 Fax: (905) 765-2644 www.graziani.ca

PROPOSED RESIDENTIAL DEVELOPMENT
25 BAKER HILL BLVD.
ROYAL PINES HOMES
SCUFFVILLE ONTARIO
Project Architect: B.GRAZIANI
Assistant Designer: R.LINCOLN
Drawn By: S.G.
Checked By: G.COLANGELO/D.BIASE
Plot Date: Nov. 7, 2017
Job #: 1134.13

6TH FLOOR ENLARGED PART PLAN

1:50 A306c
TITLEBLOCK SIZE: 915 x 1400