



**UNITED ENGINEERING INC**  
Mechanical and Electrical Consulting Engineers

3645 Keele St. #105  
Toronto, ON, M3J 1M6  
Email: info@u-eng.ca  
T: (416) 398-1999  
F: (416) 398-1933

## SITE INSTRUCTION

PROJECT: HAMPTON MANOR  
25 BAKER HILL BLVD  
STOUFFVILLE, ONTARIO

PROJECT NO: 14-016

CONTRACT: Mechanical

DATE April 23, 2018

SITE INSTRUCTION: M-15R

THIS SITE INSTRUCTION IS NOT TO BE CONSTRUED AS A CHANGE IN THE CONTRACT PRICE, BUT IS ISSUED FOR CLARIFICATION ONLY. IF A CHANGE IN CONTRACT PRICE IS PERCEIVED, PROVIDE AN ITEMIZED BREAKDOWN OF ANY EXTRAS OR CREDITS WITHIN SEVEN (7) WORKING DAYS.

**Purpose:** To suit architectural layout changes.

**1.0 Reference Drawing M-10, M-12 (2<sup>nd</sup> Floor - Mechanical) Issued**

1.1 Added: Piping to pick up 3<sup>rd</sup> floor drains.

**2.0 Reference Drawing M-15, M-17 (3<sup>rd</sup> Floor - Mechanical) Issued**

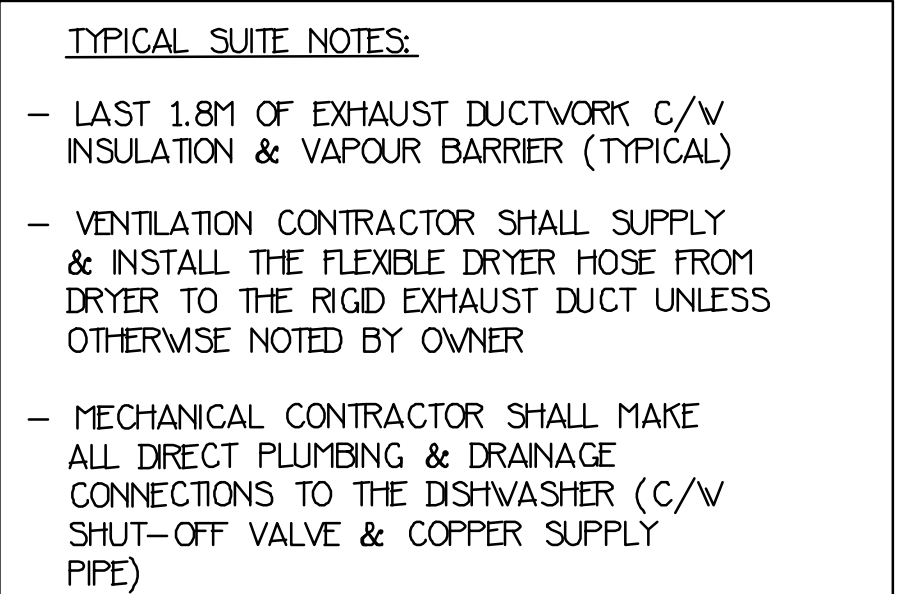
2.1 Added: Terrace drain at balcony.

**Note:** The above will be uploaded to FTP SITE

PREPARED BY:

Leon Bai  
Mechanical Department

ISSUED TO ROYAL PINE HOMES,  
Cinzia Caruso, Cinzia@royalpinehomes.com;  
Vince Staffieri, vince@royalpinehomes.com  
FOR DISTRIBUTION TO ALL AFFECTED PARTIES.




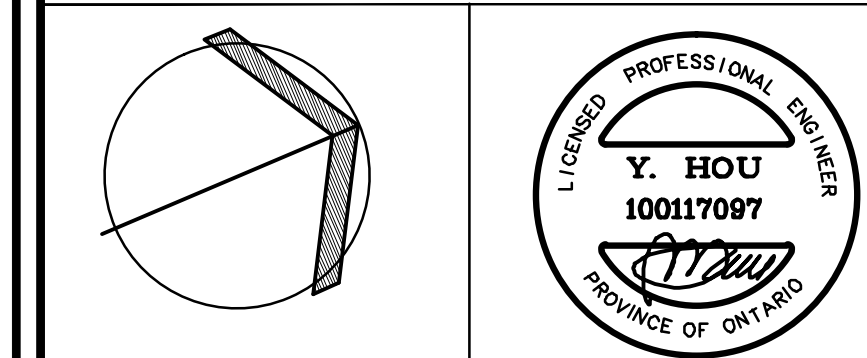
9	LB	ISSUED FOR SITE INSTRUCTION 11-19R	APR/23/2010
7	LB	REVISED AS PER SITE INSTRUCTION 11-15	APR/06/2010
7	LB	REVISED AS PER SITE INSTRUCTION 11-14	MAR/14/2010
7	LB	REVISED AS PER SITE INSTRUCTION 11-10	OCT/31/2009
5	LB	REVISED AS PER SITE INSTRUCTION 11-5 ISSUED FOR CONSTRUCTION	AUG/09/2009
4	LB	PROGRESS FOR CONSTRUCTION	JUL/18/2009
3	LB	ISSUED AS PER SITE INSTRUCTION 11-4	MAY/16/2009
2	LH	ISSUED FOR PERMIT	DEC/28/2006
1	LH	ISSUED FOR TENDER	MAR/21/2006
NO.	BY	DESCRIPTION	DATE
REVISONS			

This drawing, is an instrument of service, is provided by and is the property of United Engineering Inc. The contractor must verify and accept responsibility for all dimensions and conditions on site and must notify United Engineering Inc. of any discrepancy before proceeding.

United Engineering Inc. is not responsible for the accuracy of Architectural, structural, interior design, etc. on this drawing.

Refer to the appropriate trade drawings before proceeding with any work. Installation must conform to all applicable codes and requirements of the local authorities.

This drawing is not to be scaled, all symbols are graphic representations only.



**United Engineering Inc.**  
 Mechanical Electrical Consulting Engineers  
 3645 Keele Street, Suite 105,  
 Toronto, Ontario, M3J 1M6  
 Tel: (416) 398 1999, Fax: (416) 398 1933

TITLE

**2ND FLOORS PLAN  
MECHANICAL**

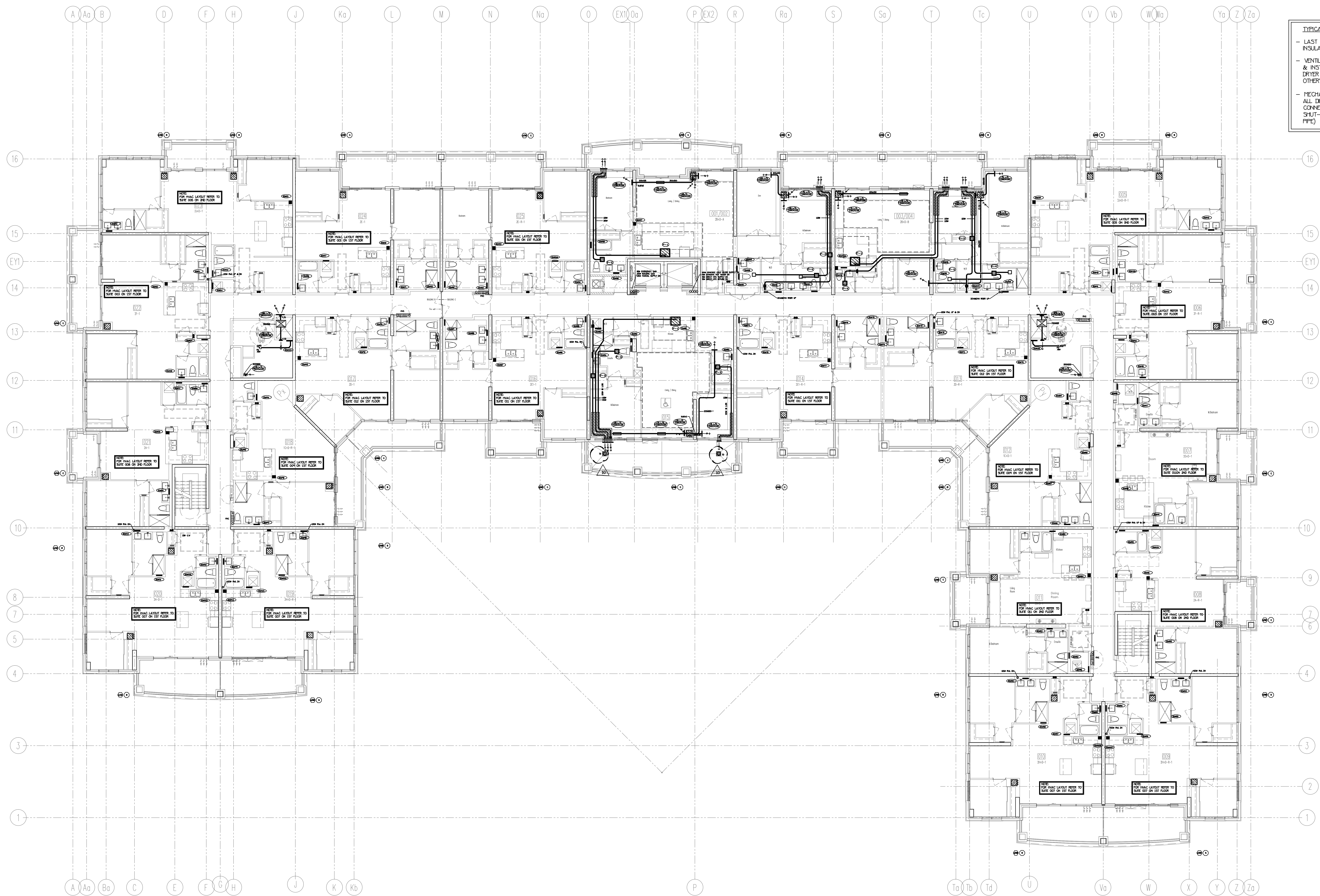
PROJECT  
**25 BAKER HILL BLVD.**  
**ROYAL PINE HOMES**

**STOUFFVILLE, ONTARIO**  
**PROPOSED RESIDENTIAL DEVELOPMENT**

GC	BT	1:100
DATE	PROJECT	DRAWING
JUNE 2015	14-016	M-10
		OF 42



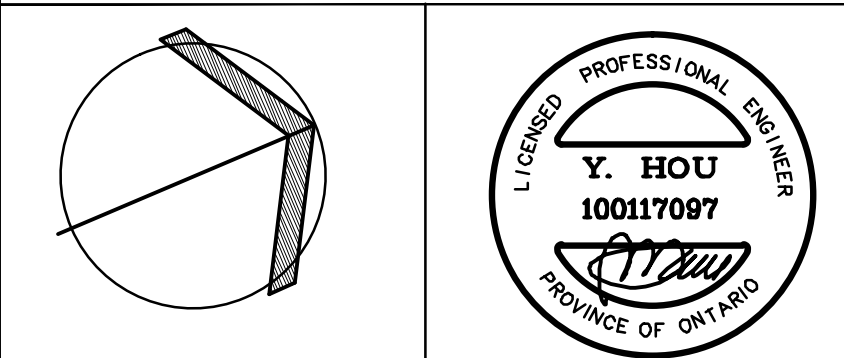




10	LB	ISSUED FOR SITE INSTRUCTION P1-15R	APR/23/2018
9	LB	REVISED AS PER SITE INSTRUCTION P1-15	APR/06/2018
8	LB	REVISED AS PER SITE INSTRUCTION P1-14	MAR/14/2018
7	LB	REVISED AS PER SITE INSTRUCTION P1-10	OCT/31/2017
6	LB	REVISED AS PER SITE INSTRUCTION P1-6	AUG/25/2017
5	LB	REVISED AS PER SITE INSTRUCTION P1-5	AUG/09/2017
4	LB	PROGRESS FOR CONSTRUCTION	JUL/18/2017
3	LB	ISSUED AS PER SITE INSTRUCTION P1-4	MAY/16/2017
2	LH	ISSUED FOR PERMIT	DEC/28/2016
1	LH	ISSUED FOR TENDER	MAR/21/2016
NO.	BY	DESCRIPTION	DATE

REVISIONS

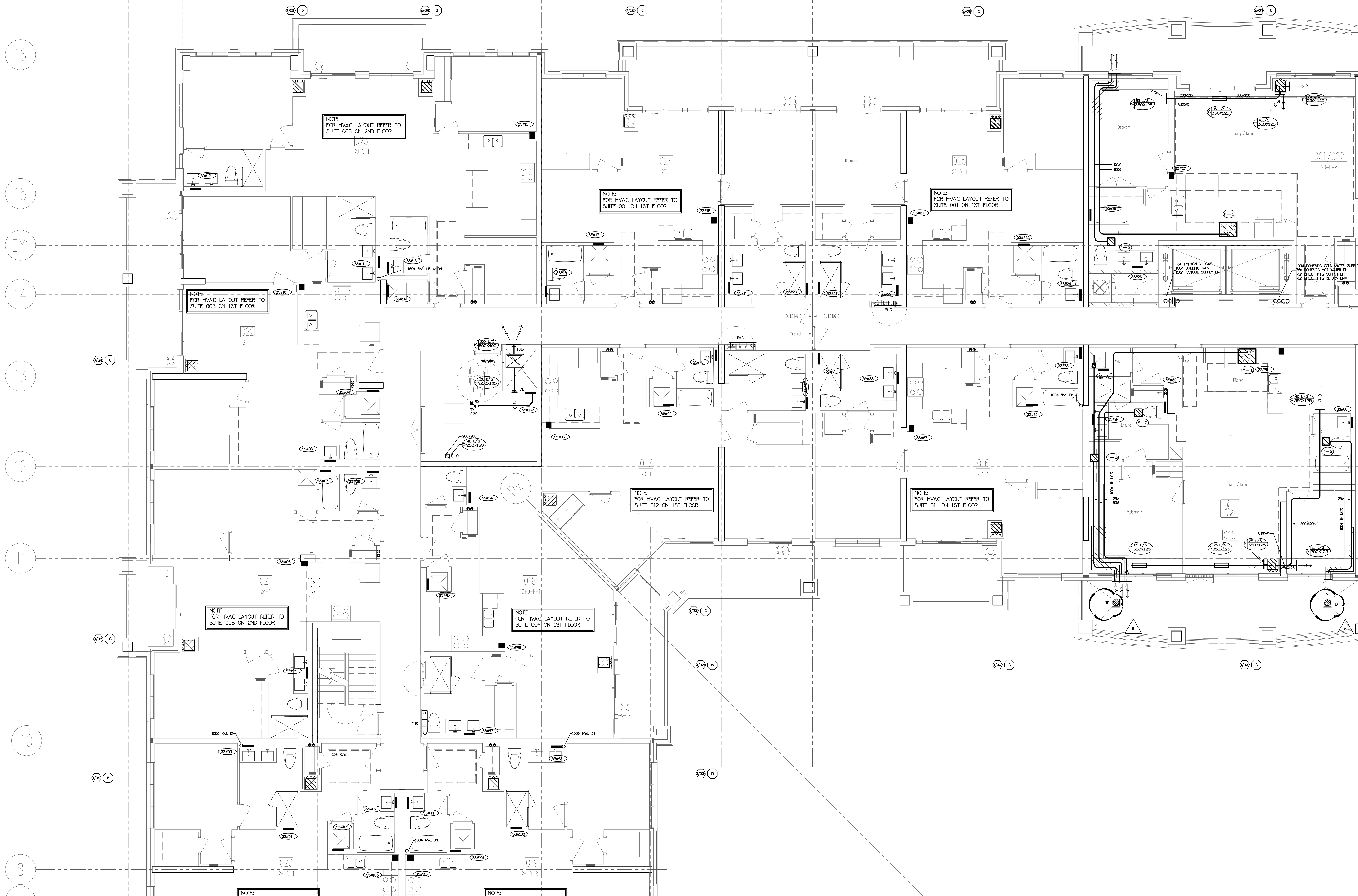
This drawing, is an instrument of service, is provided by and is the property of United Engineering Inc. The contractor must verify and accept responsibility for all dimensions and conditions on site and must notify United Engineering Inc. of any discrepancy before proceeding. United Engineering Inc. is not responsible for the accuracy of Architectural, structural, interior design, etc. on this drawing. Refer to the appropriate trade drawings before proceeding with any work. Installation must conform to all applicable codes and requirements of the authorities having jurisdiction. This drawing is not to be scaled, all symbols are graphic representations only.



**United Engineering Inc.**  
Mechanical Electrical Consulting Engineers  
3045 Keele Street, Suite 105,  
Toronto, Ontario, M3J 1W6  
Tel: (416) 398 1099; Fax: (416) 398 1933

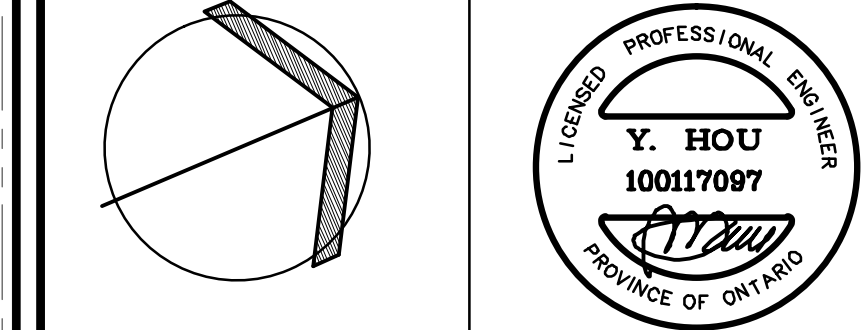
TITLE <b>3RD AND 4TH FLOORS MECHANICAL</b>			
PROJECT <b>25 BAKER HILL BLVD. ROYAL PINE HOMES</b>			
STOUFFVILLE, ONTARIO		PROPOSED RESIDENTIAL DEVELOPMENT	
DRAWN GC	CHECKED BT	SCALE 1:100	
DATE JUNE 2015	PROJECT 14-016	DRAWING <b>M-15</b> OF 42	





NO.	BY	DESCRIPTION	DATE
8	LB	ISSUED FOR SITE INSTRUCTION #1-15R	APR/23/2018
7	LB	REVISED AS PER SITE INSTRUCTION #1-15	APR/08/2018
6	LB	REVISED AS PER SITE INSTRUCTION #1-6	AUG/25/2017
5	LB	REVISED AS PER SITE INSTRUCTION #1-5	AUG/04/2017
4	LB	PROGRESS FOR CONSTRUCTION	JUL/18/2017
3	LB	ISSUED FOR SITE INSTRUCTION #1-4	MAY/17/2017
2	LB	ISSUED FOR PERMIT	DEC/28/2016
1	LB	ISSUED FOR TENDER	MAR/21/2016

This drawing is an instrument of service, is provided by and is the property of United Engineering Inc. The contractor must verify and accept responsibility for all dimensions and conditions on site and must notify United Engineering Inc. of any discrepancy before proceeding. United Engineering Inc. is not responsible for the accuracy of Architectural, structural, interior design, etc. on this drawing. Refer to the appropriate trade drawings before proceeding with any work. Installation must conform to all applicable codes and requirements of the authorities having jurisdiction. This drawing is not to be scaled, all symbols are graphic representations only.



**United Engineering Inc.**  
Mechanical Electrical Consulting Engineers  
3045 Keele Street, Suite 105  
Toronto, Ontario, M3J 1W6  
Tel: (416) 398 1099, Fax: (416) 398 1933

TITLE <b>3RD AND 4TH FLOORS MECHANICAL-PART</b>		
PROJECT <b>25 BAKER HILL BLVD. ROYAL PINE HOMES</b>		
STOUFFVILLE, ONTARIO		
PROPOSED RESIDENTIAL DEVELOPMENT		
DRAWN GC	CHECKED BT	SCALE 1:50
DATE JUNE 2015	PROJECT <b>14-016</b>	DRAWING <b>M-17</b> OF <b>42</b>