



**UNITED ENGINEERING INC**  
Mechanical and Electrical Consulting Engineers

3645 Keele St. #105  
Toronto, ON, M3J 1M6  
Email: info@u-eng.ca  
T: (416) 398-1999  
F: (416) 398-1933

## SITE INSTRUCTION

PROJECT: HAMPTON MANOR  
25 BAKER HILL BLVD  
STOUFFVILLE, ONTARIO

PROJECT NO: 14-016

CONTRACT: Mechanical

DATE April 19, 2018

SITE INSTRUCTION: M-16

---

THIS SITE INSTRUCTION IS NOT TO BE CONSTRUED AS A CHANGE IN THE CONTRACT PRICE, BUT IS ISSUED FOR CLARIFICATION ONLY. IF A CHANGE IN CONTRACT PRICE IS PERCEIVED, PROVIDE AN ITEMIZED BREAKDOWN OF ANY EXTRAS OR CREDITS WITHIN SEVEN (7) WORKING DAYS.

**Purpose:** To revise 7<sup>th</sup> floor balcony gas line outlets and hose bibbs as per client's request.

**1.0 Reference Drawing M-30, M-31, M-32, M-33 (7<sup>th</sup> Floor - Mechanical) Issued**

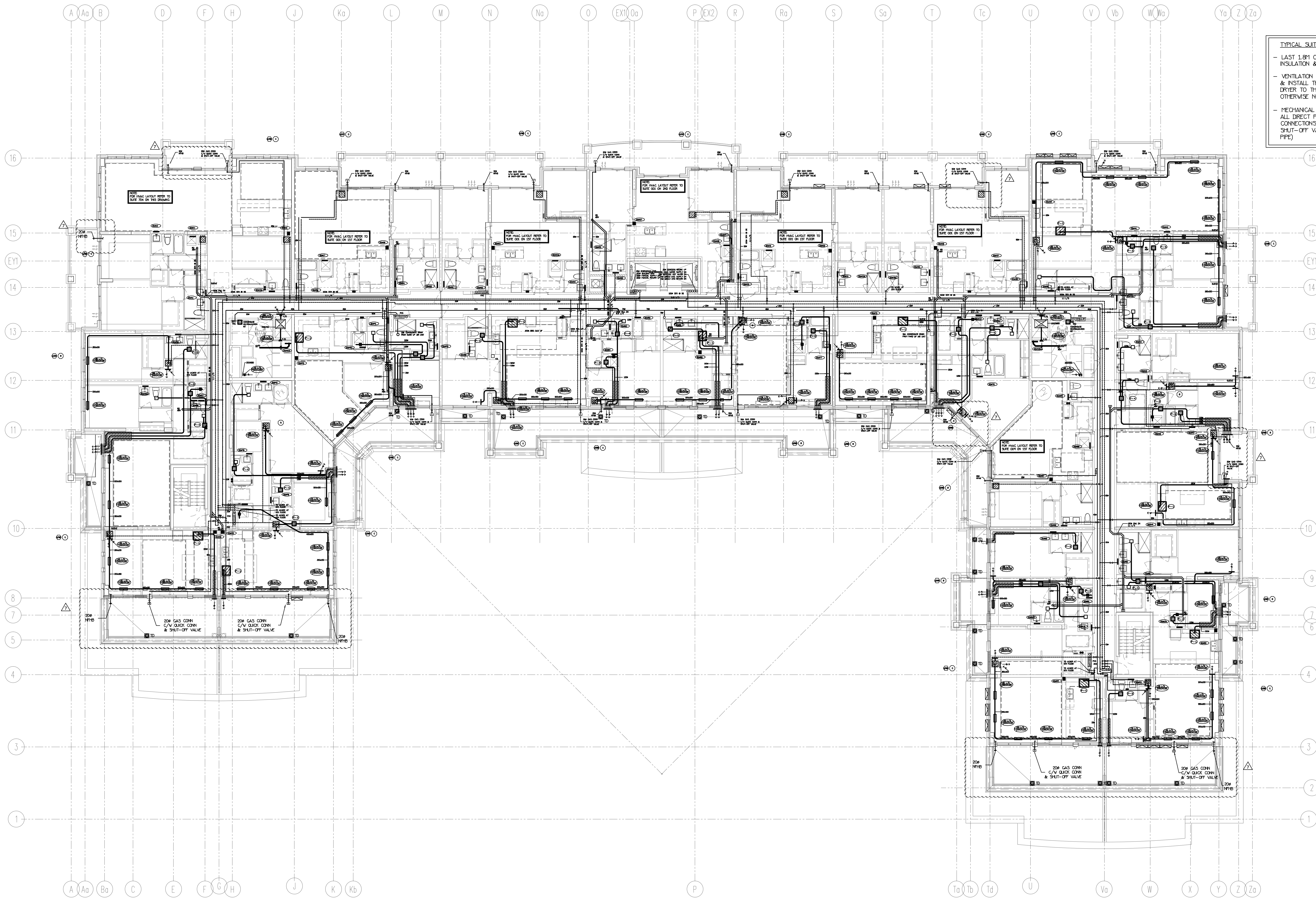
1.1 Revised: Balcony gas line outlets and hose bibbs.

**Note:** The above will be uploaded to FTP SITE

PREPARED BY: \_\_\_\_\_

  
Leon Bai  
Mechanical Department

ISSUED TO ROYAL PINE HOMES,  
Cinzia Caruso, Cinzia@royalpinehomes.com;  
Vince Staffieri, vince@royalpinehomes.com  
FOR DISTRIBUTION TO ALL AFFECTED PARTIES.



TYPICAL SUITE NOTES:

- LAST 1.8M OF EXHAUST DUCTWORK C/V INSULATION & VAPOUR BARRIER (TYPICAL)
- VENTILATION CONTRACTOR SHALL SUPPLY & INSTALL THE FLEXIBLE DRYER HOSE FROM DRYER TO THE RIGID EXHAUST DUCT UNLESS OTHERWISE NOTED BY OWNER
- MECHANICAL CONTRACTOR SHALL MAKE ALL DIRECT PUMPING & DRAINAGE CONNECTIONS TO THE DISHWASHER (C/V SHUT-OFF VALVE & COPPER SUPPLY PPE)

NOTE: FULLY SPRINKLERED BUILDING FOR FIRE PROTECTION DESIGN PLEASE REFER TO DSANO SPRINKLER DESIGN LIMITED DRAWINGS.

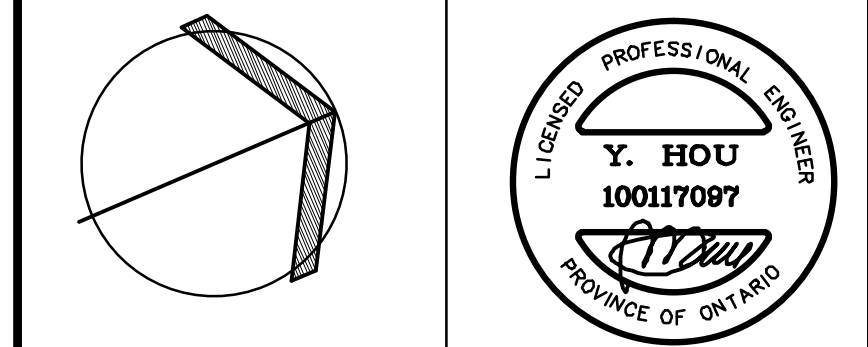
NO.	BY	DESCRIPTION	DATE
7	LB	REVISED AS PER SITE INSTRUCTION H-16	APR/19/2018
6	LB	REVISED AS PER SITE INSTRUCTION H-10	OCT/31/2017
5	LB	REVISED AS PER SITE INSTRUCTION H-5	AUG/04/2017
4	LB	ISSUED FOR CONSTRUCTION	JUL/18/2017
3	LH	PROGRESS FOR CONSTRUCTION	JUL/18/2017
2	OP	ISSUED FOR PERMIT	JUL/28/2016
1	OP	REVISED AS PER SITE INSTRUCTION H-2	AUG/16/2016
1	LH	ISSUED FOR TENDER	MAR/21/2016

This drawing, is an instrument of service, is provided by and is the property of United Engineering Inc. The contractor must verify and accept responsibility for all dimensions and conditions on site and must notify United Engineering Inc. of any discrepancy before proceeding.

United Engineering Inc. is not responsible for the accuracy of Architectural, structural, interior design, etc. on this drawing.

Refer to the appropriate trade drawings before proceeding with any work. Installation must conform to all applicable codes and requirements of the authorities having jurisdiction.

This drawing is not to be scaled, all symbols are graphic representations only.

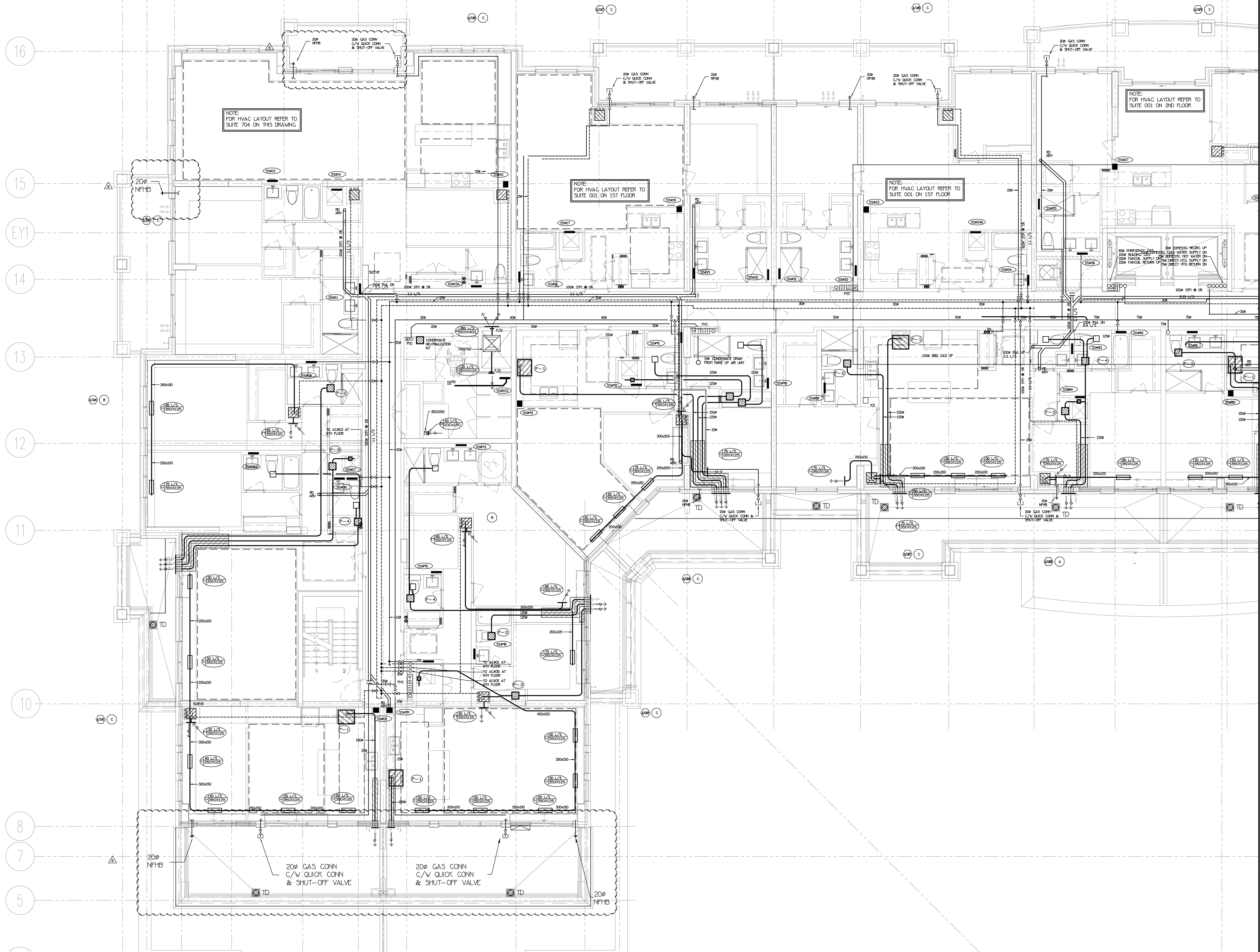


**United Engineering Inc.**  
Mechanical Electrical Consulting Engineers  
3045 Keele Street, Suite 105,  
Toronto, Ontario, M3J 1W6  
Tel: (416) 398-1999, Fax: (416) 398-1933

TITLE		
PART 7TH FLOOR PLAN MECHANICAL		
PROJECT		
25 BAKER HILL BLVD. ROYAL PINE HOMES		
STOUFFVILLE, ONTARIO		
PROPOSED RESIDENTIAL DEVELOPMENT		
DRAWN	CHECKED	SCALE
GC	BT	1:100
DATE	PROJECT	DRAWING
JUNE 2015	14-016	M-30
		OF 42



NOTE: FULLY SPRINKLERED BUILDING  
FOR FIRE PROTECTION DESIGN PLEASE  
REFER TO DSANO SPRINKLER DESIGN  
UNITED DRAWINGS.



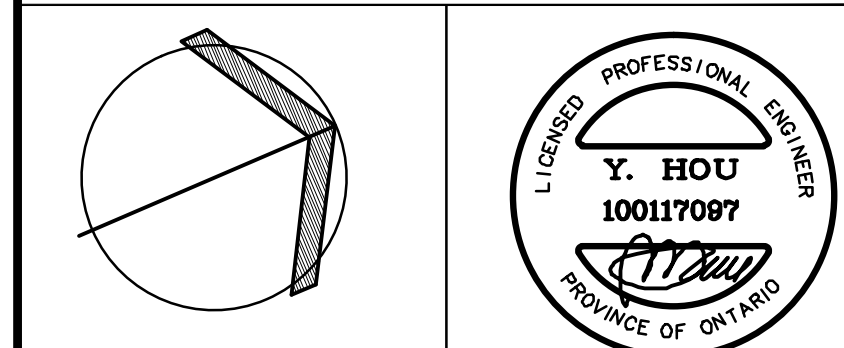
NO.	BY	DESCRIPTION	DATE
1	BT	ISSUED FOR TENDER	MAR/21/2016
2	BT	REVISED AS PER SITE INSTRUCTION H-2	AUG/16/2016
3	BT	ISSUED FOR PERMIT	DEC/28/2016
4	BT	PROGRESS FOR CONSTRUCTION	JUL/18/2017
5	BT	ISSUED FOR CONSTRUCTION	AUG/04/2017
6	BT	REVISED AS PER SITE INSTRUCTION H-16	APR/14/2018

This drawing, is an instrument of service, is provided by and is the property of United Engineering Inc. The contractor must verify and accept responsibility for all dimensions and conditions on site and must notify United Engineering Inc. of any discrepancy before proceeding.

United Engineering Inc. is not responsible for the accuracy of Architectural, structural, interior design, etc. on this drawing.

Refer to the appropriate trade drawings before proceeding with any work. Installation must conform to all applicable codes and requirements of the authorities having jurisdiction.

This drawing is not to be scaled, all symbols are graphic representations only.



**United Engineering Inc.**  
Mechanical Electrical Consulting Engineers  
3045 Keele Street, Suite 105,  
Toronto, Ontario, M3J 1W6  
Tel: (416) 398 1999, Fax: (416) 398 1933

TITLE <b>PART 7TH FLOOR PLAN MECHANICAL</b>		
PROJECT <b>25 BAKER HILL BLVD. ROYAL PINE HOMES</b>		
STOUFFVILLE, ONTARIO <b>PROPOSED RESIDENTIAL DEVELOPMENT</b>		
DRAWN GC	CHECKED BT	SCALE 1:50
DATE JUNE 2015	PROJECT <b>14-016</b>	DRAWING <b>M-31</b> OF <b>42</b>

TYPICAL SUITE NOTES:

- LAST 1.8M OF EXHAUST DUCTWORK C/W INSULATION & VAPOUR BARRIER (TYPICAL)
- VENTILATION CONTRACTOR SHALL SUPPLY & INSTALL THE FLEXIBLE DRYER HOSE FROM DRYER TO THE RIGID EXHAUST DUCT UNLESS OTHERWISE NOTED BY OWNER
- MECHANICAL CONTRACTOR SHALL MAKE ALL DIRECT PLUMBING & DRAINAGE CONNECTIONS TO THE DISHWASHER (C/W SHUT-OFF VALVE & COPPER SUPPLY PIPE)

NOTE: FOR HVAC LAYOUT REFER TO SUITE 001 ON 1ST FLOOR

NOTE: FOR HVAC LAYOUT REFER TO SUITE 001 ON 1ST FLOOR

NOTE: FOR HVAC LAYOUT REFER TO SUITE 001 ON 1ST FLOOR

NOTE: FULLY SPRINKLERED BUILDING FOR FIRE PROTECTION DESIGN PLEASE REFER TO DSANO SPRINKLER DESIGN LIMITED DRAWINGS.

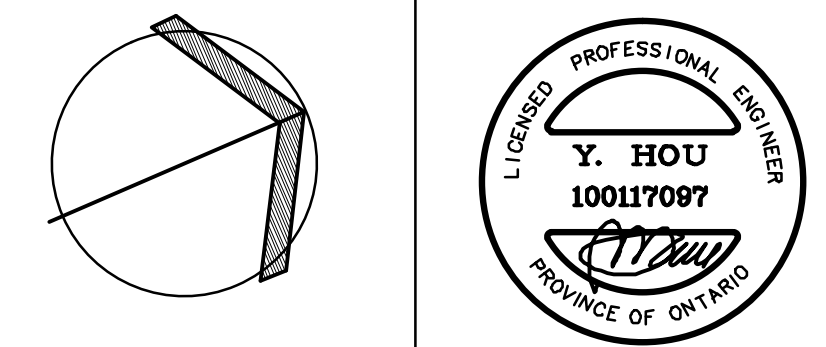
NO.	BY	DESCRIPTION	DATE
6	LB	REVISED AS PER SITE INSTRUCTION H-16	APR/14/2018
5	LB	REVISED AS PER SITE INSTRUCTION H-5	AUG/04/2017
4	LB	ISSUED FOR CONSTRUCTION	AUG/04/2017
3	LB	PROGRESS FOR CONSTRUCTION	JUL/18/2017
2	LB	ISSUED FOR PERMIT	JUL/28/2016
1	LB	REVISED AS PER SITE INSTRUCTION H-2	AUG/16/2016
0	LB	ISSUED FOR TENDER	MAR/21/2016

This drawing, is an instrument of service, is provided by and is the property of United Engineering Inc. The contractor must verify and accept responsibility for all dimensions and conditions on site and must notify United Engineering Inc. of any discrepancy before proceeding.

United Engineering Inc. is not responsible for the accuracy of Architectural, structural, interior design, etc. on this drawing.

Refer to the appropriate trade drawings before proceeding with any work. Installation must conform to all applicable codes and requirements of the authorities having jurisdiction.

This drawing is not to be scaled, all symbols are graphic representations only.



**United Engineering Inc.**  
Mechanical Electrical Consulting Engineers  
3045 Keele Street, Suite 105,  
Toronto, Ontario, M3J 1W6  
Tel: (416) 398 1999, Fax: (416) 398 1933

TITLE			
PART 7TH FLOORS PLAN MECHANICAL			
PROJECT			
25 BAKER HILL BLVD. ROYAL PINE HOMES			
STOUFFVILLE, ONTARIO			
PROPOSED RESIDENTIAL DEVELOPMENT			
DRAWN	CHECKED	SCALE	
GC	BT	1:50	
DATE	PROJECT	DRAWING	
JUNE 2015	14-016	M-32	
		OF 42	



