



Site Instruction

Royal Pine Homes
3550 Langstaff Road, Suite 200
Woodbridge, Ontario
L4L 9G3

SI 25

PROJECT : Hampton Manor
PROJECT No : 1136.13
DATE : August 15, 2018

Attn: Vince Staffieri

Site instructions/memos and Addendums are issued only for the purpose of recording any clarification or interpretation of the contract documents or giving direction on problems resulting from field conditions. These memos are subject to the provisions of the contract documents and unless reviewed with and authorized by the Client, will not affect the contract. Should the Contractor require a change in the contract price or project schedule, he shall submit to the Client, prior to commencement of work outlined in this memo, an itemized proposal for approval.

Title: Revised Door Schedule

A103 – Door Schedule

- Revision of some ground floor doors from hollow metal to solid core wood doors.
- Addition of Door G29.
- 7th Floor Entry door to Suites to be 2438mm in height.

A301b – Ground Floor Partial Plan

- Addition of Door G29

Reason: **For Coordination with Interior Design drawings**

References: **A103, A301b.**

GRAZIANI + CORAZZA
ARCHITECTS INC

G. Colangelo Diploma Arch. Technology
Associate. Director of Contract Documents

Distribution:

Royal Pine Homes
Dineen Construction
Dineen Construction
Dineen Construction

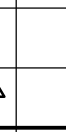
Cinzia Caruso
Dominic Salvati
Jeff Ellis
Eric Wright

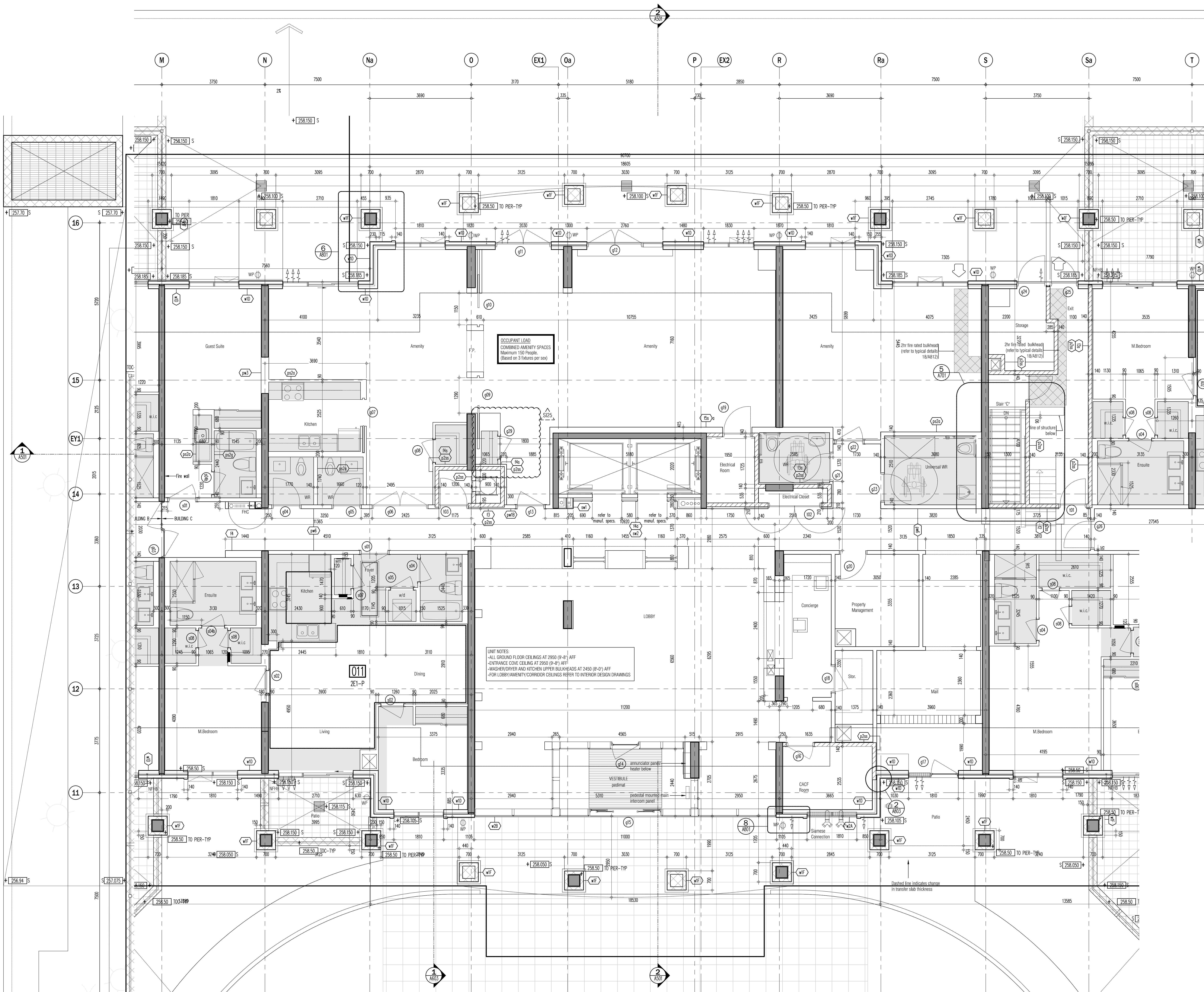
cinzia@royalpinehomes.com
dsalvati@dineen.com
jellis@dineen.com
rwright@dineen.com

Door Schedule General Notes	
1.	all doors including frames requiring a fire protection rating shall comply with Subsection 3.1.8 of the OBC.
2.	all doors including frames requiring a fire protection rating shall be labelled indicating fire rating and be equipped with a listed self closing device, a listed positive latching mechanism and listed hardware.
3.	all residential suite doors opening onto a public corridor shall be designed not to lock automatically (article 3.3.4.5 of the OBC.)
4.	all doors that open into a corridor or other facility providing access to exit from a suite, or room not located within a suite shall comply with articles 3.3.1.10, 3.3.1.12 and 3.3.1.18 of the OBC.
5.	all doors in an access to exit, means of egress or exit shall comply with articles 3.4.6.10 to 3.4.6.15 inclusive of the OBC.
6.	all doors in a barrier free path of travel shall comply with article 3.8.3.3 of the OBC.
7.	all doors within a suite shall comply with section 9.6 of the OBC.
8.	for hardware refer to hardware schedule
9.	all doors equipped with a hold open device shall comply with article 3.1.8.12 of the OBC.
10.	all doors equipped with an electric strike required for security shall comply with article 3.3.1.12 of the OBC.
11.	all doors equipped with an electromagnetic lock shall comply with article 3.4.6.15 of the OBC.
12.	all washroom/bathroom doors to be equipped with a privacy lock.
13.	all steel doors equipped w/ an electromagnetic lock to be 18 ga. steel and tack weld and fill edges.
14.	common area doors with glazing that are fire rated to be gwg or firelight glass.

Door abbreviations		
hmi - hollow metal insulated	pst - pressed steel	pt - paint
sc - solid core wood	al - aluminum	anod - anodized
hc - hollow core wood	wd - wood	vam - varnish
hm - hollow metal	alum - hollow metal	st - stained
ps - pressed steel insulated	es - electric strike	lam - plastic laminate finish
alum - aluminum	ml - electro magnetic lock	ss - stainless steel
comp - composite	hod - hold open device	ig - insulated glass
ri - re-inforced	cr - card reader	sq - sheet glass
fr - frosted glass	pb - push button	pg - plate glass
fg - fixed glass	md - motion detector	gwg - georgian wire glass
tg - tempered glass		

Abbreviations		
act active, ex: one leaf pair of doors	grom grommet	oskp outside knob pinned
adj adjustable, ex: shelves	h90 hold open at 90°	oskr outside knob rigid
af armoured front (of a lock) (covers fixing and cylinder screws)	h180 hold open at 180°	ost outside trim
	hc hollow core (door)	pa parallel arm (closer)
ahc architectural hardware consultant	hmd hollow metal door	pbs protected box strike
al aluminum	hml hollow metal frame	ph(s) phillips head (screws)
ams all machine screws	hnb hex nut & bolt	pl plate (floor, push, pull)
arm arm (or closer or door holder)	ho hold open (door closer)	pr pair
asa american standards association	hoa hold open arm (closer holder)	psf pressed steel frame
atms (closer to template with machine screws)	hr hour (fire door rating)	rab rabbeted
aws all wood screw	h-t hospital tip (butts)	rad radius
ald aluminum door	ht height	rb reverse bevel
bb ball bearing	id inside diameter	rc round corners (butts)
bv bevel(ed)	int interior	reg regular
b3v beveled 3 edges (kick plates)	ist inside trim	rem.mul removable mullion
bp brass pin (hinges)	j jamb	rf rounded or radius front
bs backset (lock) distance between edge of door and centre of knob	k key(s)	rf & st rounded front and shrike (for rounded edge of door and centre of knob)
b&s brown and sharp (gauges)	ka keyed alike	rh(s) right hand (reverse)
bt ball top (hinges)	kd keyed different	rm room
btd back to back (butts)	k.d. knocked down (indicates that part of the assembly unit are separately packed to be assembled when required)	rp rawl plug
c (c) centre or centreline		sa single acting (doors)
cb cement box (floor closers)		sc solid core (door)
cts cast box strike	kv key valve (closing device)	sc(s) screw(s)
c/c centre to centre,also, cut for cylinder	lbr less bottom rod (of a vertical rod type exit device)	sgl single
cl cut for cylinder		sh shield
clt cut for thumb turn	l/c less cylinder (lock)	sl sleeve
clf channel iron frame	lhr(b) left hand reverse (bevel)	sms sheet metal screws
ck construction key	lh left hand	s-ms strike machine screws
corr corridor	l.l lead lined (doors)	sp.hd spanner head (screws)
clc centre to centre	l.p. light proof	spdle spindle
ctsk countersunk	l.s. lead shield	ss stainless steel
cyl cylinder (lock)	m metal	std standard
da double-acting	mxc maximum	st-ms strike template with machine screws
dbl double	mc metal clad (door)	sw self tapping screws
ddeg degrees	md metal door	sw swivel
dps dust proof strike	mf metal frame	tb thru-bolts
dr door	mk(ed) masterkey(ed)	tbn thru-bolts and grommet nuts
dt dummy trim	ms machine screws	tin thru-bolts and nuts
ea each	m x m metal by metal (door and frame)	tlc tin clad
emk emergency	nb nylon bearing	tgb toggle bolt
exp.sh expansion shield	nck no change key	tk turn knob
ext exterior	nr no rose	tms template machine screws
flr flat button tip	nsp non removable pin (butts)	tp thumb piece
f.d. fire door	ns narrow stile	ul underwriters label
fls flat head screw	oa overall	ulc Underwriters Label Canada
f.l. fusible link	ob oblique bearing (hinges)	wd wood door
fl floor	obs open back strike (permits inactive leaf of doors to open independently)	wf wood frame
fr frame	od outside diameter	ws wood screws
ft foot or feet	oh(s) oval head (screws)	x-bar cross bar
ga gauge	opb opening	
gm/gm great grand master key (ed)	os outside	
gm/g grand master key (ed)		
gm- grommet nut (& bolt)		

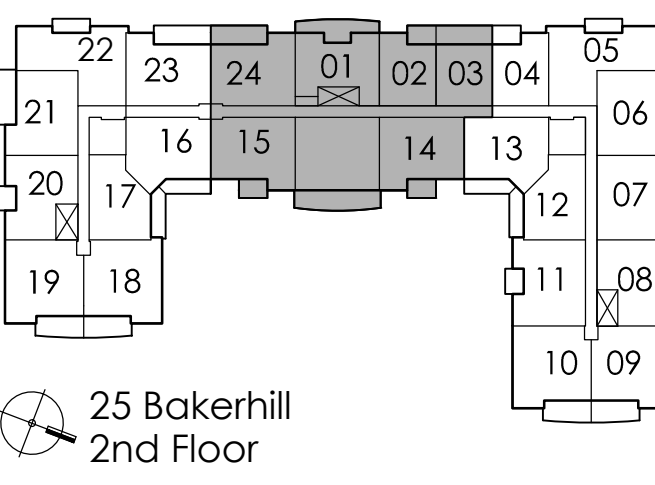
Door Schedule																			
	door no.	location		type	doors			frames				threshold		remarks					
		from	to		width	height	thickness	material	glass	fire rating	finish	type	material			glass	fire rating	finish	material
Underground underground parking - P1	b01	garage	lockers	d	965	2130	45	hm		1.5hr	pt		hm		45min	pt			
	b02	garage	lockers	d	965	2130	45	hm		1.5hr	pt		hm		45min	pt			
	b03	garage	a/i	b	965	2130	45	hm	gwg	1.5hr	pt		hm		1.5hr	pt			panic
	b04	garage	a/i	b	965	2130	45	hm	gwg	1.5hr	pt		hm		1.5hr	pt			panic
	b05	garage	sec. electrical room	d	965	2130	45	hm		1.5hr	pt		hm		45min	pt			
	b06	garage	lockers	d	965	2130	45	hm		1.5hr	pt		hm		45min	pt			
	b07	garage	mechanical room	d	2/965	2130	45	hm		1.5hr	pt		hm		1.5hr	pt			
	b08	garage	garbage room	d	2/965	2130	45	hm		1.5hr	pt		hm		1.5hr	pt			
	b09	reserved																	
	b10	garbage room	bulk	d	965	2130	45	hm		1.5hr	pt		hm		1.5hr	pt			
	b11	garage	bulk	d	965	2130	45	hm		1.5hr	pt		hm		1.5hr	pt			
	b12	a/i	elevator lobby	b1	965	2130	45	hm	gwg	1.5hr	pt		hm		1.5hr	pt			mag lock, ADO, panic, electric strike
	b13	garage	a/i	b	965	2130	45	hm	gwg	1.5hr	pt		hm		1.5hr	pt			panic, ADO
	b14	garage	sec. electrical room	d	2/965	2130	45	hm		1.5hr	pt		hm		45min	pt			
	b15	garage	cpu	d	965	2130	45	hm		1.5hr	pt		hm		45min	pt			
	b16	garage	a/i	b	965	2130	45	hm	gwg	1.5hr	pt		hm		1.5hr	pt			panic
	b17	garage	a/i	b	965	2130	45	hm	gwg	1.5hr	pt		hm		1.5hr	pt			panic
	b18	garage	a/i	b	965	2130	45	hm	gwg	1.5hr	pt		hm		1.5hr	pt			panic
	b19	garage	lockers	d	965	2130	45	hm		1.5hr	pt		hm		45min	pt			
	b20	garage	main electrical room	d	965	2130	45	hm		1.5hr	pt		hm		45min	pt			
	b21	garage	main electrical room	d	2/965	2130	45	hm		1.5hr	pt		hm		45min	pt			
	b22	locker	exhaust shaft	d	915	915	45	hm			pt		hm			pt			lock set
	b23	garage	FA shaft	d	915	915	45	hm			pt		hm			pt			lock set
	b24	locker	exhaust shaft	d	915	915	45	hm			pt		hm			pt			lock set
	b25	garage	FA shaft	d	915	915	45	hm			pt		hm			pt			lock set
	b26	stair "B"	stair "B" mid landing	d	915	915	45	hm			pt		hm			pt			lock set
	b27	stair "C"	stair "C" mid landing	d	915	915	45	hm			pt		hm			pt			lock set
	b28	stair "A"	stair "A" mid landing	d	915	915	45	hm			pt		hm			pt			lock set
Ground floor amenity - suites	gd1	exit corridor	exterior	a	915	2450		alum	tg		anod.	alum			anod.			panic, weather stripping	
	gd2	corridor	lockers	d	965	2130	45	hm		1.5hr	pt		hm		1.5hr	pt			
	gd3	corridor	garage	d	2/965	2450	45	hm		1.5hr	pt		hm		1.5hr	pt			ADO, panic
	gd4	corridor	washroom	d	965	2130	45	sc		45min	pt		redi		45min	pt			privacy lock
	gd5	corridor	washroom	d	965	2130	45	sc		45min	pt		redi		45min	pt			privacy lock
	gd6	corridor	amenity	b	2/965	2130	45	sc		45min	pt		redi		45min	pt			ADO, electric strike
	gd7	amenity	closet	d	965	2130	45	sc			pt		hm			pt			weather stripping
	gd8	amenity	closet	d	810	2130	45	sc			pt		redi			pt			
	gd9	amenity	amenity	b	1200	2130	45				pt					pt			pocket door - refer to millwork drawings
	gd10	amenity	amenity	b	1200	2130	45				pt					pt			pocket door - refer to millwork drawings
	gd11	amenity	exterior	a	2/965	2450		alum	tg		anod.	alum			anod.			weather stripping, panic	
	gd12	amenity	exterior	a	2/965	2450	45	alum	tg		anod.	alum			anod.			weather stripping, panic	
	gd13	corridor	amenity	b	965	2130	45	sc		45min	pt		redi		45min	pt			ADO, electric strike
	gd14	lobby	a/i	a	965	2450		alum	tg		anod.	alum			anod.			panic, ADO, weather stripping	
	gd15	a/i	exterior	s1	2/915	2450		alum	tg		anod.	alum			anod.			sliding, panic, ADO, weather stripping	
	gd16	lobby	c.a.c.i	d	965	2130	45	hm		1.5hr	pt		redi		1.5hr	pt			
	gd17	lobby	mag room	a	965	2450		alum	tg		anod.	alum			anod.			panic, weather stripping	
	gd18	concierge	storage	d	965	2130				45min	pt				45min	pt			refer to millwork drawings
	gd19	amenity	electrical room	d	965	2130	45	hm		1.5hr	pt		redi		1.5hr	pt			
	gd20	corridor	property manager	d	965	2130	45	sc		45min	pt		redi		45min	pt			ADO
	gd21	corridor	univ. washroom	d	965	2130	45	sc		45min	pt		redi		45min	pt			ADO, electric strike
	gd22	corridor	amenity	a	965	2130	45	sc	gwg	45min	pt		redi		45min	pt			ADO, electric strike
	gd23	corridor	univ. washroom	d	965	2130	45	sc		45min	pt		redi		45min	pt			ADO, electric strike
	gd24	pet wash	exterior	a	965	2450		alum	tg		anod.	alum			anod.			panic, ADO, weather stripping	
	gd25	corridor to stair B	exterior	a	915	2450		alum	tg		anod.	alum			anod.			panic, weather stripping	
	gd26	corridor	corridor	a	965	2450		alum	tg		anod.	alum			anod.			ADO	
	gd27	corridor	lockers	d	965	2130	45	hm		1.5hr	pt		hm		1.5hr	pt			
	gd28	exit corridor	exterior	a	915	2450		alum	tg		anod.	alum			anod.			panic, weather stripping	
	gd29	amenity	closet	d	810	2130	45	sc			pt		redi			pt			
Typical Doors 2nd - 7th floor	dd1	corridor	lockers	d	965	2130	45	hm		45min	pt		hm		45min	pt			
	dd2	corridor	corridor	a1	2/965	2450	45	hm	gwg	1.5hr	pt		hm		1.5hr	pt			
	dd3	corridor	lockers	d	965	2130	45	hm		45min	pt		hm		45min	pt			
	sd1	corridor	suite	d	965	2130	45	sc		20min	wd		redi		20min	pt			door viewer, door contact
	sd2	bedroom		d	810	2130	35	hc			pt		wd			pt			
	sd2a	bedroom		d	915	2130	35	hc			pt		wd			pt			
	sd3	den		d	2/860	2130	35	hc			pt		wd			pt			
	sd3a	den		d	760	2130	35	hc			pt		wd			pt			
	sd4	bathroom		d	760	2130	35	hc			pt		wd			pt			
	sd4a	bathroom		d	915	2130	35	hc			pt		wd			pt			
	sd4b	bathroom		d	810	2130	35	hc			pt		wd			pt			
	sd4c	bathroom		d	660	2130	35	hc			pt		wd			pt			
	sd5	washer/dryer		d	810	2130	35	hc			pt		wd			pt			
	sd5a	washer/dryer		d	2/610	2130	35	hc			pt		wd			pt			
	sd5b	washer/dryer		d	760	2130	35	hc			pt		wd			pt			
	sd6	closet		s1	varies	2130	35	hc			pt		wd			pt			
	sd7	closet		d	610	2130	35	hc			pt		wd			pt			
	sd7a	closet		d	2/610	2130	35	hc			pt		wd			pt			
	sd7b	closet		d	760	2130	35	hc			pt		wd			pt			
sd7c	w.i.c.		d	610	2130	35	hc			pt		wd			pt				
sd8a	closet		d	810	2130	35	hc			pt		wd			pt				
Typical corridor 7th floor	sd1	corridor	suite	d	965	2440	45	sc		20min	wd		redi		20min	pt			door viewer, door contact (for 7th floor only)
	td1	corridor	exit stair	b	860	2130	45	hm	gwg	1.5hr	pt		hm		1.5hr	pt			panic
	td1a	stair landing	stair landing	b	860	2130	45	hm	gwg	1.5hr	pt		hm		1.5hr	pt			panic
	td2	corridor	electric closet	d	2/915	2130	45	hm		1.5hr	pt		hm		1.5hr	pt			surface bolt
Mechanical Penthouse Main floor	md1	electrical room	exterior	d	915	2130	45	hm			pt		hm			pt			weather stripping
	md2	electrical room	generator & elec. room	d	915	2130	45	hm		45min	pt		hm		45min	pt			
	md3	electrical room	elev. machine room	d	915	2130	45	hm			pt		hm			pt			
	md4	boiler room	elev. machine room	d	915	2130	45	hm		45min	pt		hm		45min	pt			
	md5	boiler room	electrical room	d	915	2130	45	hm		45min	pt		hm		45min	pt			
	md6	boiler room	exterior	d	2-915	2130	45	hm		45min	pt		hm		45min	pt			weather stripping
	md7	stair "A"	exterior	d	860	2130	45	hm		45min	pt		hm		45min	pt			weather stripping
	md8	stair "B"	exterior	d	860	2130	45	hm			pt		hm			pt			weather stripping



CEILING HEIGHTS			
FLOOR	FOYER & KITCHEN	BULKHEADS	LIVING/ DINING/DEN/BEDROOM
GRD	2950	2750	2950
2ND	2600	2450	SLAB AT 2750
3RD	2600	2450	SLAB AT 2750
4TH	2600	2450	SLAB AT 2750
5TH	2600	2450	SLAB AT 2750 / 2700
6TH	2600	2450	SLAB AT 2750 / 2700
7TH	2900	2750	3050

This drawing, as an instrument of service, is provided by and is the property of Grazianni & Corazza Architects Inc. The architect must retain and accept responsibility for all dimensions and conditions on site and must notify Grazianni & Corazza Architects Inc. of any variations from the approved information. Grazianni & Corazza Architects Inc. is not responsible for the accuracy of any structure, mechanical, electrical, etc., engineering information shown on this drawing. When the structural engineering drawings are provided to the architect, the architect must confirm in all applicable codes and requirements of the authorities having jurisdiction. Other relevant codes, so highlighted have been identified or reported on by this office in regard to the environmental condition of the site. This drawing is not to be used for construction purposes until counterchecked by the architect.

- This drawing is not to be scaled. All architectural symbols indicated on this drawing are graphic representations only.
- | | | |
|-----------------|---|------|
| 01. FEB.28.2014 | Issued to city for SPA | B.G. |
| 02. JUL.9.2014 | re-issued to city for SPA | B.G. |
| 03. SEP.11.2014 | re-issued to city for SPA | B.G. |
| 04. JAN.15.2015 | re-issued to city for SPA | B.G. |
| 05. MAR.15.2015 | Issued for tender | B.G. |
| 06. DEC.28.2016 | Issued for building permit | B.G. |
| 07. MAY.10.2017 | re-issued for building permit | B.G. |
| 08. MAY.10.2017 | Issued for Footings and Foundation Permit | B.G. |
| 09. JUL.19.2017 | Progress for Construction | B.G. |
| 11. AUG.09.2017 | Issued for Construction | B.G. |
| 12. OCT.25.2017 | Revision to Envelope | B.G. |
| 13. APR.04.2018 | Re-issued for Building Permit | B.G. |



- | | | |
|-----------------|---------------------------------|------|
| 04. AUG.15.2018 | 325 REVISED DOOR SCHEDULE | B.G. |
| 03. FEB.12.2018 | 313 REVISING OPERABLE WINDOWS | B.G. |
| 02. DEC.13.2017 | 311 REV1 -STAR C | B.G. |
| 01. SEP.06.2017 | 3106 TRANSOM/BULKHEADS REVISION | B.G. |

Issued for revisions

GRAZIANI CORAZZA ARCHITECTS INC.

1327 Denison Street, Suite 102, Richmond Hill, Ontario L4B 1C1
Phone: 905.765.2621 Fax: 905.765.3544 www.grazzianicorazza.com

PROPOSED RESIDENTIAL DEVELOPMENT

25 BAKER HILL BLVD.

ROYAL PINES HOMES

STUFFVILLE ONTARIO

Project Architect: B. GRAZIANI
Assistant Designer: R. LINCOLN
Drawn By: S.G.
Checked By: G. COLANGELO/D.B.ASE
Plot Date: Jul. 4, 2018
Job #: 1134.13

GROUND FLOOR ENLARGED PART PLAN

1:50 A301b

TITLEBLOCK SIZE: 915 x 1400