



UNITED ENGINEERING INC
Mechanical and Electrical Consulting Engineers

3645 Keele St. #105
Toronto, ON, M3J 1M6
Email: info@u-eng.ca
T: (416) 398-1999
F: (416) 398-1933

SITE INSTRUCTION

PROJECT: HAMPTON MANOR
25 BAKER HILL BLVD
STOUFFVILLE, ONTARIO

PROJECT NO #: 14-016

CONTRACT: Electrical

DATE October 01, 2018

SITE INSTRUCTION NO.: E-30

THIS SITE INSTRUCTION IS NOT TO BE CONSTRUED AS A CHANGE IN THE CONTRACT PRICE, BUT IS ISSUED FOR CLARIFICATION ONLY. IF A CHANGE IN CONTRACT PRICE IS PERCEIVED, PROVIDE AN ITEMIZED BREAKDOWN OF ANY EXTRAS OR CREDITS WITHIN SEVEN (7) WORKING DAYS.

PURPOSE: Revise as per RFI - 010.

1.0 Reference Drawings E-8 (Mechanical Penthouse - Electrical) Issued

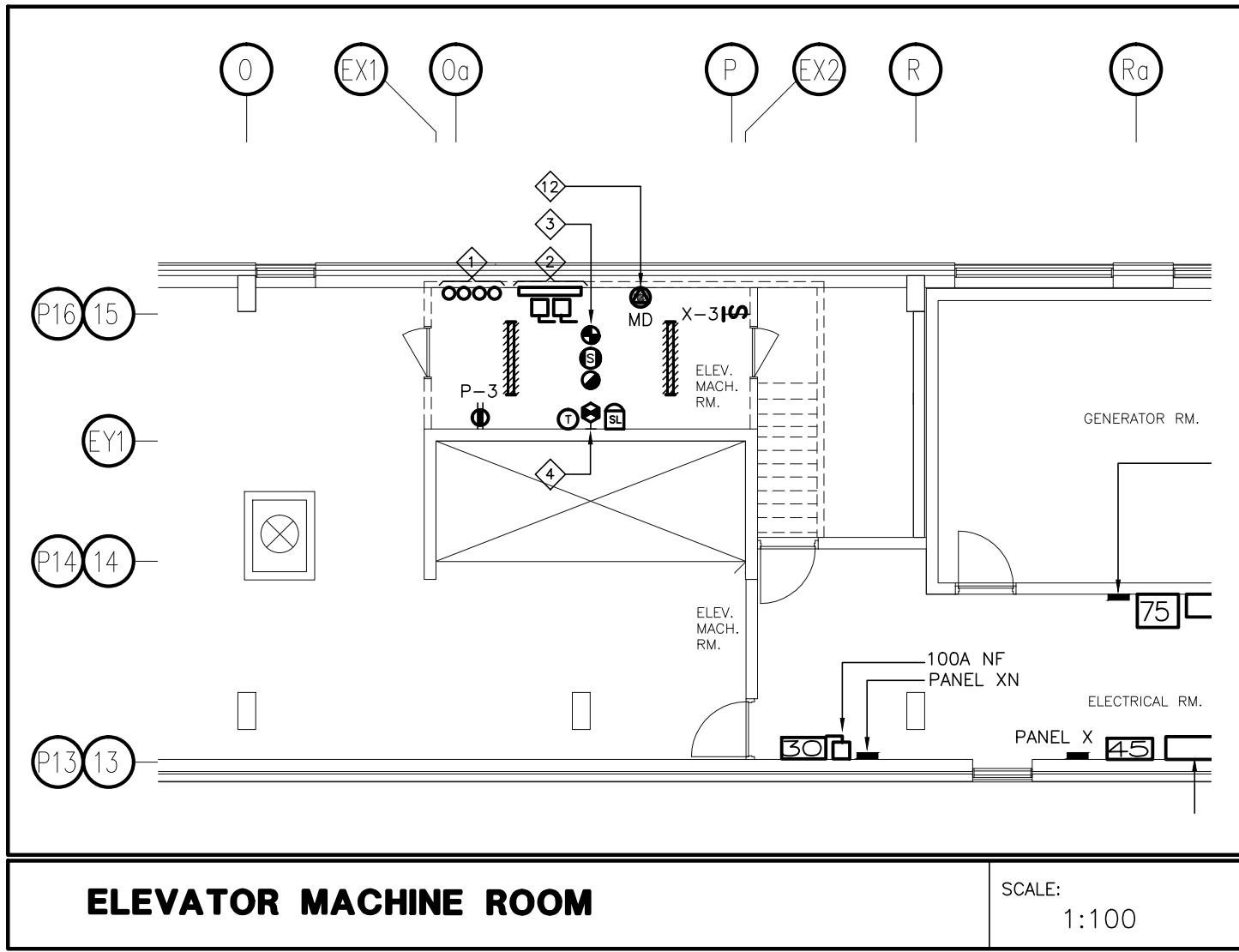
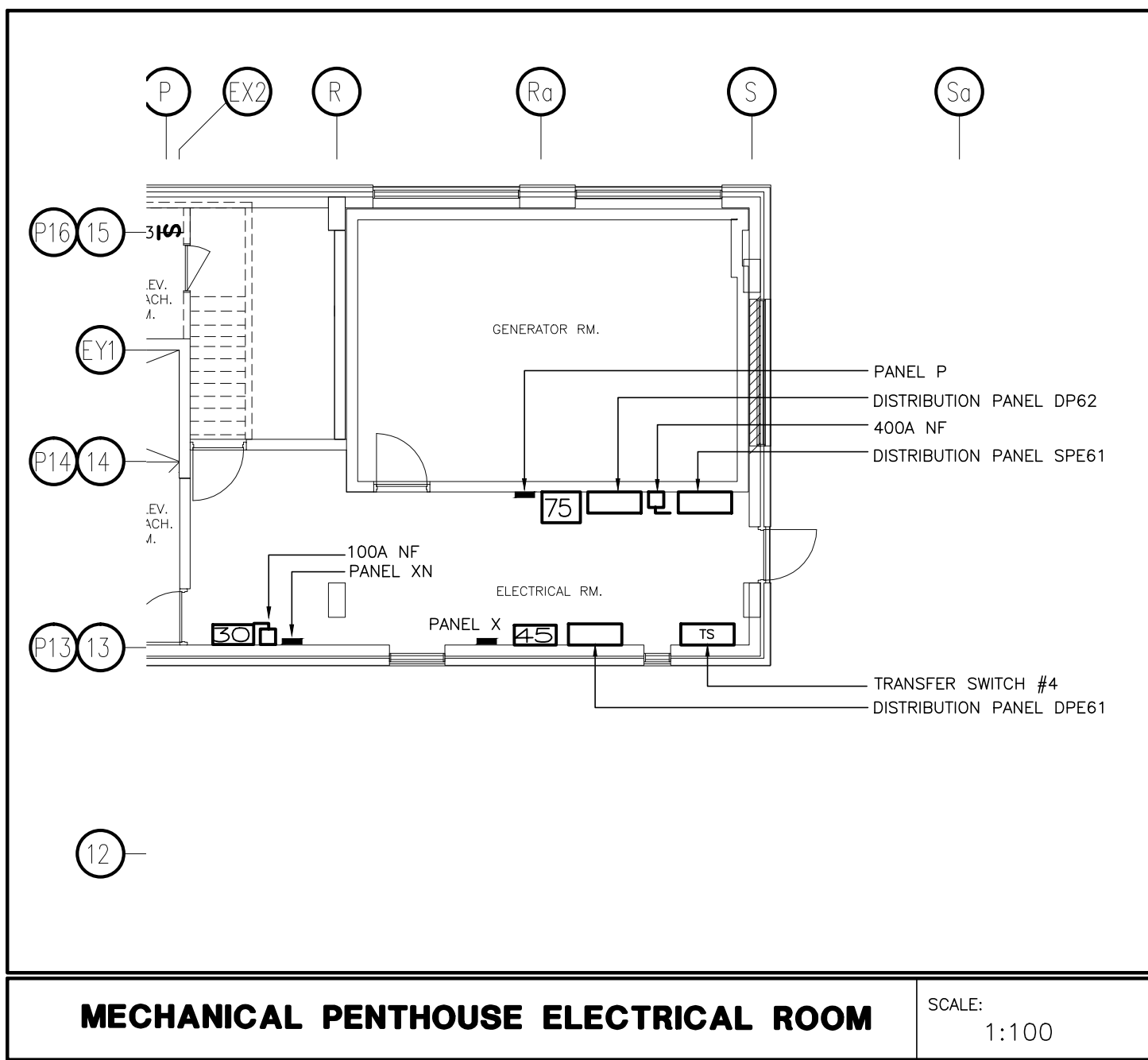
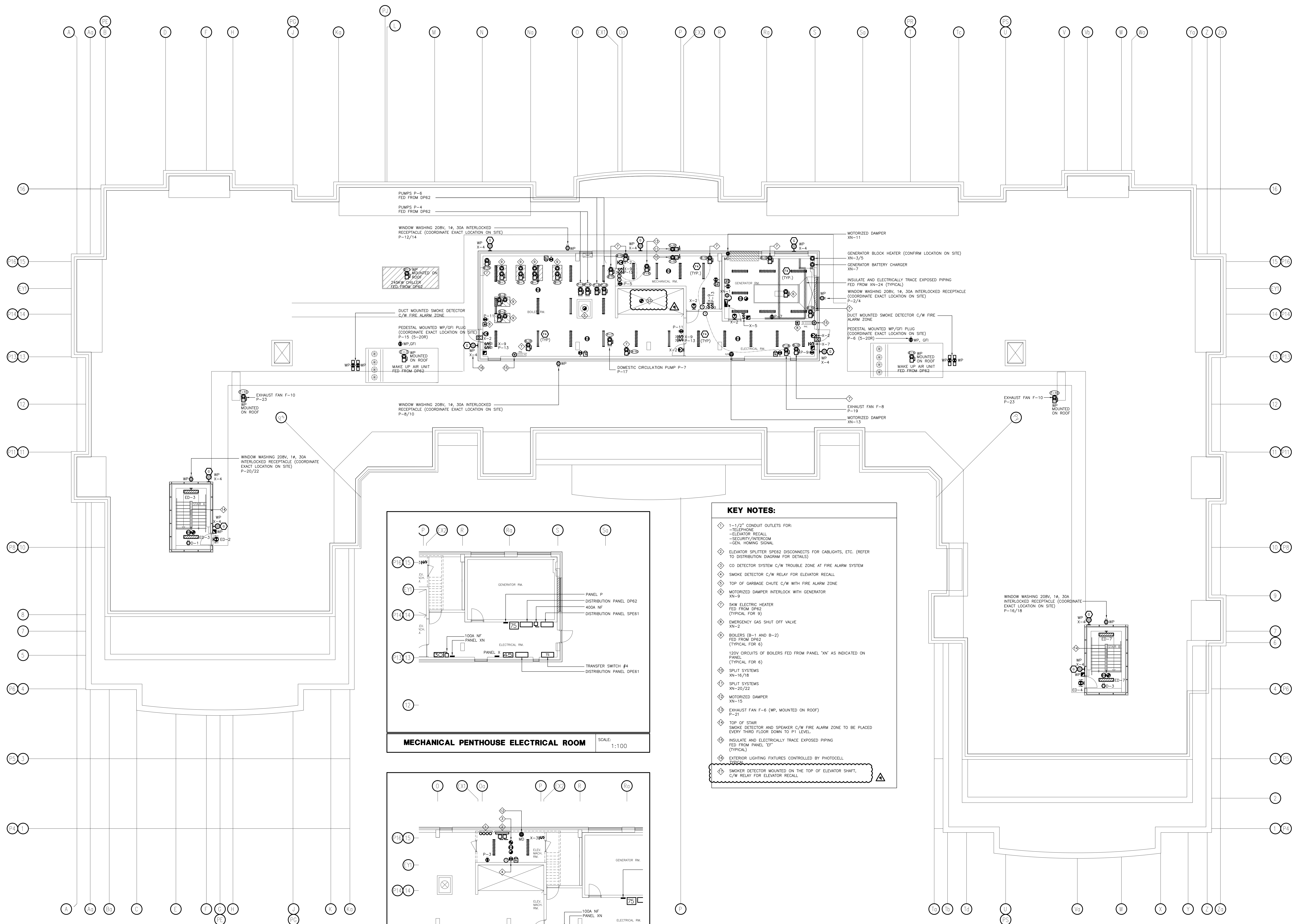
1.1 Add: Smoke detector c/w relay for elevator recall in elevator shaft.

PREPARED BY:

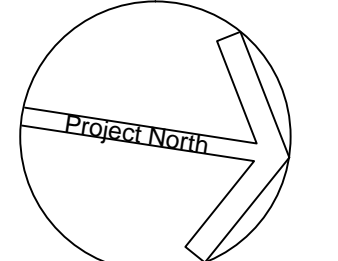
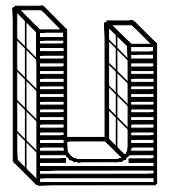
Susan Pan

Susan Pan
Electrical Department

ISSUED TO ROYAL PINE HOMES,
Cinzia Caruso, Cinzia@royalpinehomes.com;
Vince Staffieri, vince@royalpinehomes.com
FOR DISTRIBUTION TO ALL AFFECTED PARTIES.



- KEY NOTES:**
- 1-1/2" CONDUIT OUTLETS FOR:
 - TELEPHONE
 - ELEVATOR RECALL
 - SECURITY/INTERCOM
 - GEN. HOVING SIGNAL
 - ELEVATOR SPLITTER SPE62 DISCONNECTS FOR CABLIGHTS, ETC. (REFER TO DISTRIBUTION DIAGRAM FOR DETAILS)
 - CO DETECTOR SYSTEM C/W TROUBLE ZONE AT FIRE ALARM SYSTEM
 - SMOKE DETECTOR C/W RELAY FOR ELEVATOR RECALL
 - TOP OF GARBAGE CHUTE C/W WITH FIRE ALARM ZONE
 - MOTORIZED DAMPER INTERLOCK WITH GENERATOR XN-9
 - SHW ELECTRIC HEATER FED FROM DP62 (TYPICAL FOR 9)
 - EMERGENCY GAS SHUT OFF VALVE XN-2
 - BOILERS (B-1 AND B-2) FED FROM DP62 (TYPICAL FOR 6)
 - 120V CIRCUITS OF BOILERS FED FROM PANEL "XN" AS INDICATED ON PANEL (TYPICAL FOR 6)
 - SPLIT SYSTEMS XN-16/18
 - SPLIT SYSTEMS XN-20/22
 - MOTORIZED DAMPER XN-15
 - EXHAUST FAN F-6 (WP, MOUNTED ON ROOF) P-21
 - TOP OF STAIR SMOKE DETECTOR AND SPEAKER C/W FIRE ALARM ZONE TO BE PLACED EVERY THIRD FLOOR DOWN TO P1 LEVEL
 - INSULATE AND ELECTRICALLY TRACE EXPOSED PIPING FED FROM PANEL "EP" (TYPICAL)
 - EXTERIOR LIGHTING FIXTURES CONTROLLED BY PHOTOCELL
 - SMOKE DETECTOR MOUNTED ON THE TOP OF ELEVATOR SHFT, C/W RELAY FOR ELEVATOR RECALL

NO.	BY	DESCRIPTION	DATE
09	SP	REVISED AS PER SI E-30	2018-10-01
08	SP	REVISED AS PER SI E-25	2018-06-20
07	SP	REVISED AS PER SI E-23	2018-05-03
06	CM	REVISED AS PER SI E-3	2017-08-11
05	CM	ISSUED FOR CONSTRUCTION	2017-08-09
04	CM	PROGRESS FOR CONSTRUCTION	2017-07-18
03	CM	ISSUED FOR PERMIT	2016-12-28
02	CM	REVISED AS PER ESA COMMENTS AND FOR CLARIFICATION	2016-05-19
01	CM	ISSUED FOR TENDER	2016-03-15
REVISIONS			
This drawing, is an instrument of service, is provided by and is the property of United Engineering Inc. The contractor must verify and accept responsibility for all dimensions and conditions on site and must notify United Engineering Inc. of any discrepancy before proceeding. United Engineering Inc. is not responsible for the accuracy of Architectural, structural, interior design, etc. on this drawing. Refer to the appropriate trade drawings before proceeding with any work. Installation must conform to all applicable codes and requirements of the authorities having jurisdiction. This drawing is not to be scaled, all symbols are graphic representations only.			
			
 United Engineering Inc. Mechanical Electrical Consulting Engineers 3645 Keele Street, Suite 105, Toronto, Ontario, M3J 1M6 Tel: (416) 398 1999, Fax: (416) 398 1933			
TITLE MECHANICAL PENTHOUSE ELECTRICAL			
PROJECT PROPOSED RESIDENTIAL DEVELOPMENT 25 BAKER HILL BLVD.			
ROYAL PINE HOMES STOUFFVILLE, ONTARIO			
DRAWN CM	CHECKED MG	SCALE 1:100	
DATE SEPT. 2015	PROJECT 14-016	DRAWING E-8	OF 12