



Site Instruction

Royal Pine Homes
3550 Langstaff Road, Suite 200
Woodbridge, Ontario
L4L 9G3

SI 31

PROJECT	: Hampton Manor
PROJECT No	: 1136.13
DATE	: December 13, 2018

Attn: Vince Staffieri

Site instructions/memos and Addendums are issued only for the purpose of recording any clarification or interpretation of the contract documents or giving direction on problems resulting from field conditions. These memos are subject to the provisions of the contract documents and unless reviewed with and authorized by the Client, will not affect the contract. Should the Contractor require a change in the contract price or project schedule, he shall submit to the Client, prior to commencement of work outlined in this memo, an itemized proposal for approval.

Title: Janitorial Room & Revised Doors

A103 – Door Schedule

- Door schedule revised based on comments and the addition of the Janitorial room.

A231 – Parking Plan

- Removal of door 27 under stair C mid-landing.

A301 – Ground Floor Plan (Overall)

- Addition of Janitorial room beside the property management office.

A301b – Ground Floor Plan (Enlarged)

- Addition of Janitorial room beside the property management office.

Reason: **As per Client Request**

References: **A103, A231, A301 and A301b.**

GRAZIANI + CORAZZA
ARCHITECTS INC

G. Colangelo Diploma Arch. Technology
Associate, Director of Contract Documents

Distribution:

Royal Pine Homes
Dineen Construction
Dineen Construction
Dineen Construction

Cinzia Caruso
Dominic Salvati
Jeff Ellis
Eric Wright

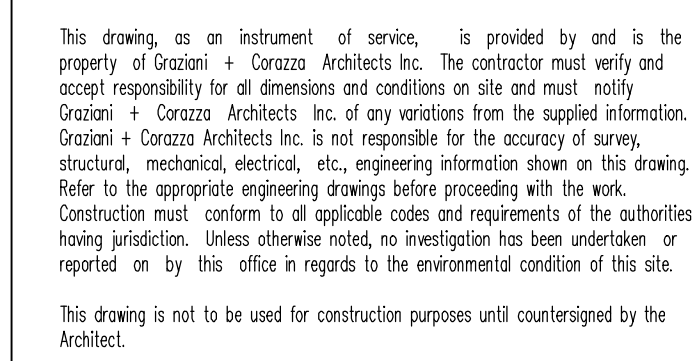
cinzia@royalpinehomes.com
dsalvati@dineen.com
jellis@dineen.com
wright@dineen.com

Door Schedule General Notes	
1.	all doors including frames requiring a fire protection rating shall comply with Subsection 3.1.8 of the OBC.
2.	all doors including frames requiring a fire protection rating shall be labelled indicating fire rating and be equipped with a listed self closing device, a listed positive latching mechanism and listed hardware.
3.	all residential suite doors opening onto a public corridor shall be designed not to lock automatically (article 3.3.4.5 of the OBC.)
4.	all doors that open into a corridor or other facility providing access to exit from a suite, or room not located within a suite shall comply with articles 3.3.1.10, 3.3.1.12 and 3.3.1.18 of the OBC.
5.	all doors in an access to exit, means of egress or exit shall comply with articles 3.4.6.10 to 3.4.6.15 inclusive of the OBC.
6.	all doors in a barrier free path of travel shall comply with article 3.8.3.3 of the OBC.
7.	all doors within a suite shall comply with section 9.6 of the OBC.
8.	for hardware refer to hardware schedule
9.	all doors equipped with a hold open device shall comply with article 3.1.8.12 of the OBC.
10.	all doors equipped with an electric strike required for security shall comply with article 3.3.1.12 of the OBC.
11.	all doors equipped with an electromagnetic lock shall comply with article 3.4.6.15 of the OBC.
12.	all washroom/bathroom doors to be equipped with a privacy lock.
13.	all steel doors equipped w/an electromagnetic lock to be 18 ga. steel and tack weld and fill edges.
14.	common area doors with glazing that are fire rated to be gwg or firelight glass.

Door abbreviations			
hmi - hollow metal insulated	pst - pressed steel	pt - paint	
sc - solid core wood	al - aluminum	anod - anodized	
hc - hollow core wood	wl - wood	vm - varnish	
hm - hollow metal	alum - hollow metal	st - stained	
ps - pressed steel insulated	es - electric strike	lam - plastic laminate finish	
alum - aluminum	mil - electro magnetic lock	ss - stainless steel	
comp - composite	hod - hold open device	ig - insulated glass	
ri - re-inforced	cr - card reader	sg - sheet glass	
fr - frosted glass	pb - push button	pg - plate glass	
fg - fixed glass	md - motion detector	gwg - georgian wire glass	
tg - tempered glass			

Abbreviations			
act active, ex: one leaf pair of doors	grom grommet	oskp outside knob pinned	
adj adjustable, ex: shelves	h90 hold open at 90°	oskr outside knob rigid	
af armoured front (of a lock) (covers fixing and cylinder screws)	h180 hold open at 180°	ost outside trim	
	hc hollow core (door)	pa parallel arm (closer)	
ahc architectural hardware consultant	hmd hollow metal door	pbs protected box strike	
al aluminum	hmf hollow metal frame	ph(s) phillips head (screws)	
ams all machine screws	hnb hex nut & bolt	pl plate (floor, push, pull)	
arm arm (or closer or door holder)	ho hold open (door closer)	pr pair	
asa american standards association	hoa hold open arm (closer holder)	pst pressed steel frame	
atms (closer to template with machine screws)	hr hour (fire door rating)	rab rabbeted	
aws all wood screw	h-t hospital tip (bolts)	rad radius	
alid aluminum door	ht height	rb reverse bevel	
bb ball bearing	id inside diameter	rc round corners (bolts)	
bev bevel(ed)	int interior	reg regular	
bdr beveled 3 edges (kick plates)	ist inside trim	rem.mul removable mullion	
bp brass pin (hinges)	j jamb	rf rounded or radius front	
bs backset (lock) distance between edge of door and centre of knob	k key(s)	rf & st rounded front and strike (for rounded edge of pair of doors)	
b&s brown and sharp (gauges)	ka keyed alike	rh(s) round head screws	
kal kalamein	kalamein	rh(s) round head screws	
bt ball top (hinges)	kd keyed different	rh(n) right hand (reverse)	
bdb back to back (bolts)	k.d. knocked down (indicates that part of the assembly unit are separately packed to be assembled when required)	rp rawl plug	
c (c) centre or centeline		sa single acting (doors)	
cb cement box (floor closers)		sc solid core (door)	
ctbs cast box strike	kv key valve (closing device)	sc(s) screw(s)	
c/c centre to centre also, cut for cylinder	lbr less bottom rod (of a vertical rod type exit device)	sgl single	
cfc cut for cylinder		sh shield	
cft cut for thumb turn	l/c less cylinder (lock)	sl sleeve	
cif channel iron frame	lhr(b) left hand reverse (bevel)	sm sheet metal screws	
ck construction key	lb left hand	sms strike metal screws	
corr corridor	l.l. lead lined (doors)	s-ms strike machine screws	
ctc centre to centre	l.p. light proof	sq.hd spanner head (screws)	
ctsk countersunk	l.s. lead shield	sdlle spindle	
cyl cylinder (lock)	m metal	ss stainless steel	
da double acting	max maximum	std standard	
dbl double	mc metal clad (door)	st-ms strike template with machine screws	
deg degree	md metal door	sts self tapping screws	
dps dust proof strike	mf metal frame	sw swivel	
dr door	mk(ed) masterkey(ed)	tb thru-bolts	
di dummy trim	mm minimum	tbtn thru-bolts and grommet nuts	
ea each	ms machine screws	tbn thru-bolts and nuts	
emk emergency	m x m metal by metal (door and frame)	tc tin clad	
exp.sh expansion shield	nb nylon bearing	tgb toggle bolt	
ext exterior	nck no change key	tk turn knob	
flr flat button tip	nr no rose	tms template machine screws	
f.d. fire door	nsp non removable pin (bolts)	tp thumb piece	
frs flat head screw	ns narrow stile	ul underwriters label	
f.l. fusible link	oa overall	ulc Underwriters Label Canada	
fl floor	ob oilite bearing (hinges)	wd wood door	
fr frame	obs open back strike (permits inactive leaf of doors to open independently)	wbs (X) wrought box strike	
ft foot or feet	od outside diameter	wf wood frame	
ga gauge	oh(s) oval head (screws)	ws wood screws	
gmkm great grand master key (ed)	oh(s) oval head (screws)	x-bar cross bar	
gmk grand master key (ed)	oph opening		
gn grommet nut (& bolt)	os outside		

Door Schedule																				
	door no.	location		type	doors				frames				threshold		remarks					
		from	to		width	height	thickness	material	glass	fire rating	finish	type	material	glass		fire rating	finish	material	finish	
Underground	undergarage ramp - P1	b01	garage	lockers	d	965	2130	45	hm		1.5hr	pt		hm		45min	pt			electric strike
		b02	garage	lockers	d	965	2130	45	hm		1.5hr	pt		hm		45min	pt			electric strike
		b03	garage	a/l	b	965	2130	45	hm	gwg	1.5hr	pt		hm		1.5hr	pt			panic
		b04	garage	a/l	b	965	2130	45	hm	gwg	1.5hr	pt		hm		1.5hr	pt			panic
		b05	garage	sec. electrical room	d	965	2130	45	hm		1.5hr	pt		hm		45min	pt			
		b06	garage	lockers	d	965	2130	45	hm		1.5hr	pt		hm		45min	pt			electric strike
		b07	garage	mechanical room	d	2/965	2130	45	hm		1.5hr	pt		hm		1.5hr	pt			
		b08	garage	garbage room	d	2/965	2130	45	hm		1.5hr	pt		hm		1.5hr	pt			
		b09	reserved																	
		b10	garage room	bulk	d	965	2130	45	hm		1.5hr	pt		hm		1.5hr	pt			
		b11	garage	bulk	d	965	2130	45	hm		1.5hr	pt		hm		1.5hr	pt			
		b12	a/l	elevator lobby	b1	965	2130	45	hm	gwg	1.5hr	pt		hm		1.5hr	pt			ADO, panic, electric strike
		b13	garage	a/l	b1	965	2130	45	hm	gwg	1.5hr	pt		hm		1.5hr	pt			ADO, panic, electric strike
		b14	garage	sec. electrical room	d	2/965	2130	45	hm		1.5hr	pt		hm		45min	pt			
		b15	garage	cuu	d	965	2130	45	hm		1.5hr	pt		hm		45min	pt			
		b16	garage	a/l	b	965	2130	45	hm	gwg	1.5hr	pt		hm		1.5hr	pt			panic
		b17	garage	a/l	b	965	2130	45	hm	gwg	1.5hr	pt		hm		1.5hr	pt			panic
		b18	garage	a/l	b	965	2130	45	hm	gwg	1.5hr	pt		hm		1.5hr	pt			panic
		b19	garage	lockers	d	965	2130	45	hm		1.5hr	pt		hm		45min	pt			electric strike
		b20	garage	main electrical room	d	965	2130	45	hm		1.5hr	pt		hm		45min	pt			panic
		b21	garage	main electrical room	d	2/965	2130	45	hm		1.5hr	pt		hm		45min	pt			panic
		b22	locker	exhaust shaft	d	915	915	45	hm			pt		hm						lock set
		b23	garage	FA shaft	d	915	915	45	hm			pt		hm						lock set
		b24	locker	exhaust shaft	d	915	915	45	hm			pt		hm						lock set
		b25	garage	FA shaft	d	915	915	45	hm			pt		hm						lock set
		b26	stair "B"	stair "B" mid landing		915	915	45	hm			pt		hm						lock set (cage door)
		b27	reserved																	
		b28	stair "A"	stair "A" mid landing		915	915	45	hm			pt		hm						lock set (cage door)
		Ground floor	amenity - suites	g01	exit corridor	exterior	a	915	2450		alum	tg		anod		alum			anod	
g02	corridor			lockers	d	965	2130	45	hm		1.5hr	pt		hm		1.5hr	pt			
g03	corridor			corridor	b1	2/965	2450	45	hm	gwg	1.5hr	pt		hm		1.5hr	pt			magnetic hold open device, panic, temp. rise
g04	corridor			washroom	d	965	2130	45	sc		45min	pt		redi		45min	pt			privacy lock
g05	corridor			washroom	d	965	2130	45	sc		45min	pt		redi		45min	pt			privacy lock
g06	corridor			amenity	b1	2/965	2130	45	sc	fire lile	45min	pt		redi		45min	pt			ADO, electric strike
g07	amenity			kitchen	d	965	2130	45	sc			pt		wd						pocket door
g08	amenity			closet	d	810	2130	45	sc			pt		redi						
g09	amenity			amenity	d	1200	2130	45				pt								pocket door - refer to millwork drawings
g10	amenity			amenity	d	1200	2130	45				pt								pocket door - refer to millwork drawings
g11	amenity			exterior	a	2/965	2450		alum	tg		anod		alum			anod			weather stripping, ADO
g12	amenity			exterior	a	2/965	2450		alum	tg		anod		alum			anod			weather stripping
g13	corridor			amenity	b1	965	2130	45	sc	fire lile	45min	pt		redi		45min	pt			ADO, electric strike
g14	lobby			a/l	a	965	2450		alum	tg		anod		alum			anod			panic, ADO, electric strike, weather stripping
g15	a/l			exterior	a	2/915	2450		alum	tg		anod		alum			anod			sliding, panic, ADO, weather stripping
g16	lobby			c.a.c.f	d	965	2130	45	sc		1.5hr	pt		hm		1.5hr	pt			
g17	amenity			mail room	d	965	2450		alum	tg		anod		alum			anod			panic, weather stripping
g18	concierge			storage	d	965	2450		sc		45min	pt		redi		45min	pt			refer to millwork drawings
g19	amenity			electrical room	d	965	2130	45	sc		1.5hr	pt		redi		45min	pt			
g20	corridor			property manager	d	965	2130	45	sc		45min	pt		redi		45min	pt			
g21	corridor			unit washroom	d	965	2130	45	sc		45min	pt		redi		45min	pt			ADO, electric strike
g22	corridor			amenity	a	965	2130	45	sc	gwg	45min	pt		redi		45min	pt			ADO, electric strike
g23	corridor			unit washroom	d	965	2130	45	sc		45min	pt		redi		45min	pt			ADO, electric strike
g24	pet wash			exterior	a	915	2450		alum	tg		anod		alum			anod			electric strike, weather stripping
g25	corridor to stair B			exterior	a	915	2450		alum	tg		anod		alum			anod			panic, HOC, electric strike, weather stripping
g26	reserved																			
g27	corridor			lockers	d	965	2130	45	hm		1.5hr	pt		hm		1.5hr	pt			
g28	exit corridor			exterior	a	915	2450		alum	tg		anod		alum			anod			panic, HOC, weather stripping
g29	amenity			closet	d	810	2130	45	sc			pt		redi						
g30	corridor			janitorial room	d	965	2130	45	sc		45min	pt		redi		45min	pt			
Typical Doors	2nd - 7th floor	d01	corridor	lockers	d	965	2130	45	hm		45min	pt		hm		45min	pt			
		d02	corridor	corridor	b1	2/965	2130	45	hm	gwg	1.5hr	pt		hm		1.5hr	pt			magnetic hold open device, temp. rise
		d03	corridor	lockers	d	965	2130	45	hm		45min	pt		hm		45min	pt			
		d04	corridor	corridor	b1	2/965	2130	45	hm	gwg	1.5hr	pt		hm		1.5hr	pt			magnetic hold open device, temp. rise
	Typical suite 2nd - 7th floor	s01	corridor	suite	d	965	2130	45	sc		20min	wd		redi		20min	pt			door viewer, door contact
		s02	bedroom		d	810	2130	35	hc			pt		wd						
		s02a	bedroom		d	915	2130	35	hc			pt		wd						
		s03	den		d	2/860	2130	35	hc			pt		wd						
		s03a	den		d	760	2130	35	hc			pt		wd						
		s04	bathroom		d	760	2130	35	hc			pt		wd						
		s04a	bathroom		d	915	2130	35	hc			pt		wd						
		s04b	bathroom		d	810	2130	35	hc			pt		wd						
		s04c	bathroom		d	660	2130	35	hc			pt		wd						
		s05	washer/dryer		d	810	2130	35	hc			pt		wd						
		s05a	washer/dryer		d	2/610	2130	35	hc			pt		wd						
		s05b	washer/dryer		d	760	2130	35	hc			pt		wd						
		s06	closet		s1	varies	2130	35	hc			pt		wd						
		s07	closet		d	610	2130	35	hc			pt		wd						
		s07a	closet		d	2/610	2130	35	hc			pt		wd						
s07b	closet		d	760	2130	35	hc			pt		wd								
s08	w.i.c.		d	610	2130	35	hc			pt		wd								
s08a	closet		d	810	2130	35	hc			pt		wd								
7th floor	s01	corridor	suite	d	965	2440	45	sc		20min	wd		redi		20min	pt			door viewer, door contact (for 7th floor only)	
typical corridor	i01	corridor	exit stair	b	860	2130	45	hm	gwg	1.5hr	pt		hm		1.5hr	pt			panic	
	i01a	stair landing	stair landing	b	860	2130	45	hm	gwg	1.5hr	pt		hm		1.5hr	pt			panic	
	i01b	garage	exit stair	b	860	2130	45	hm	gwg	1.5hr	pt		hm		1.5hr	pt			panic, temp. rise	
	i02	corridor	electric closet	d	2/915	2130	45	hm		1.5hr	pt		hm		1.5hr	pt			surface bolt	
	i03	corridor	garbage chute room	d	965	2130	45	hm		45min	pt		hm		45min	pt				
i04	stair landing	stair landing	f	860	2130	45	hm	wire mesh		pt		hm						panic		
Mech. Penthouse	Main Floor	m01	electrical room	exterior	d	915	2130	45	hm			pt		hm			pt			weather stripping
		m02	electrical room	generator & elev. room	d	915	2130	45	hm		45min	pt		hm		45min	pt			
		m03	electrical room	elev. machine room	d	915	2130	45	hm			pt		hm						
		m04	boiler room	elev. machine room	d	915	2130	45	hm		45min	pt		hm		45min	pt			



This drawing is not to be scaled. All architectural symbols indicated on this drawing are graphic representations only.

01.	FEB.28.2014	issued to city for SPA	B.G.
02.	JUL.3.2014	re-issued to city for SPA	B.G.
03.	SEP.11.2014	re-issued to city for SPA	B.G.
04.	JAN.15.2015	re-issued to city for SPA	B.G.
05.	MAR.15.2015	issued for tender	B.G.
06.	OCT.28.2016	issued for building permit	B.G.
07.	MAY.10.2017	re-issued for building permit	B.G.
08.	MAY.13.2017	issued for Footings and Foundation Permit	B.G.
10.	JULY.19.2017	Progress for Construction	B.G.
11.	AUG.09.2017	Issued for Construction	B.G.
12.	OCT.25.2017	Revision to Envelope	B.G.
13.	APR.04.2018	Re-issued for Building Permit	B.G.

LEVEL	PL	SIZE
	7th	12
6th	12	(900X1200)
5th	12	(900X1200)
4th	12	(900X1200)
3rd	12	(900X1200)
2nd	12	(900X1200)
Grd	12	(900X1200)
P1	95	(1200X1500)
	1	(1650X1500)
	2	(1800X1500)
TOTAL	182	

06.	DEC.13.2018	S31 JANITORIAL ROOM & REVISED DOORS	BG
05.	NOV.27.2018	S30 REVISED DOOR SCHEDULE	BG
04.	NOV.13.2018	S29 STAIR C RELOCATED DUCT	BG
03.	DEC.13.2017	SI 11 REV.1 -STAIR C	BG
02.	SEPT.08.2017	S107 UNDER STAIR ACCESS	BG
01.	AUG.31.2017	S105 SHAFT CURB & DOORS	BG

issued for revisions



25 BAKER HILL BLVD

20 BAKER HILL BLVD.

STOUFFVILLE ROYAL PINES HOMES ONTARIO

Project Architect: B.GRAZIANI

Assistant Designer: R. LINCOLN

Checked By: G. COLANGELO/D. BIASE

Print Date: Jul 4, 2018

Job #	1136.13
-------	---------

PARKING PLAN

Journal of Management Inquiry 18(6)

1998, 1999, 2000, 2001, 2002, 2003, 2004, 2005, 2006, 2007, 2008, 2009, 2010, 2011, 2012, 2013, 2014, 2015, 2016, 2017, 2018, 2019, 2020, 2021, 2022, 2023, 2024, 2025, 2026, 2027, 2028, 2029, 2030, 2031, 2032, 2033, 2034, 2035, 2036, 2037, 2038, 2039, 2040, 2041, 2042, 2043, 2044, 2045, 2046, 2047, 2048, 2049, 2050, 2051, 2052, 2053, 2054, 2055, 2056, 2057, 2058, 2059, 2060, 2061, 2062, 2063, 2064, 2065, 2066, 2067, 2068, 2069, 2070, 2071, 2072, 2073, 2074, 2075, 2076, 2077, 2078, 2079, 2080, 2081, 2082, 2083, 2084, 2085, 2086, 2087, 2088, 2089, 2090, 2091, 2092, 2093, 2094, 2095, 2096, 2097, 2098, 2099, 2100, 2101, 2102, 2103, 2104, 2105, 2106, 2107, 2108, 2109, 2110, 2111, 2112, 2113, 2114, 2115, 2116, 2117, 2118, 2119, 2120, 2121, 2122, 2123, 2124, 2125, 2126, 2127, 2128, 2129, 2130, 2131, 2132, 2133, 2134, 2135, 2136, 2137, 2138, 2139, 2140, 2141, 2142, 2143, 2144, 2145, 2146, 2147, 2148, 2149, 2150, 2151, 2152, 2153, 2154, 2155, 2156, 2157, 2158, 2159, 2160, 2161, 2162, 2163, 2164, 2165, 2166, 2167, 2168, 2169, 2170, 2171, 2172, 2173, 2174, 2175, 2176, 2177, 2178, 2179, 2180, 2181, 2182, 2183, 2184, 2185, 2186, 2187, 2188, 2189, 2190, 2191, 2192, 2193, 2194, 2195, 2196, 2197, 2198, 2199, 2200, 2201, 2202, 2203, 2204, 2205, 2206, 2207, 2208, 2209, 2210, 2211, 2212, 2213, 2214, 2215, 2216, 2217, 2218, 2219, 2220, 2221, 2222, 2223, 2224, 2225, 2226, 2227, 2228, 2229, 2230, 2231, 2232, 2233, 2234, 2235, 2236, 2237, 2238, 2239, 2240, 2241, 2242, 2243, 2244, 2245, 2246, 2247, 2248, 2249, 2250, 2251, 2252, 2253, 2254, 2255, 2256, 2257, 2258, 2259, 2260, 2261, 2262, 2263, 2264, 2265, 2266, 2267, 2268, 2269, 2270, 2271, 2272, 2273, 2274, 2275, 2276, 2277, 2278, 2279, 2280, 2281, 2282, 2283, 2284, 2285, 2286, 2287, 2288, 2289, 2290, 2291, 2292, 2293, 2294, 2295, 2296, 2297, 2298, 2299, 2300, 2301, 2302, 2303, 2304, 2305, 2306, 2307, 2308, 2309, 2310, 2311, 2312, 2313, 2314, 2315, 2316, 2317, 2318, 2319, 2320, 2321, 2322, 2323, 2324, 2325, 2326, 2327, 2328, 2329, 2330, 2331, 2332, 2333, 2334, 2335, 2336, 2337, 2338, 2339, 2340, 2341, 2342, 2343, 2344, 2345, 2346, 2347, 2348, 2349, 2350, 2351, 2352, 2353, 2354, 2355, 2356, 2357, 2358, 2359, 2360, 2361, 2362, 2363, 2364, 2365, 2366, 2367, 2368, 2369, 2370, 2371, 2372, 2373, 2374, 2375, 2376, 2377, 2378, 2379, 2380, 2381, 2382, 2383, 2384, 2385, 2386, 2387, 2388, 2389, 2390, 2391, 2392, 2393, 2394, 2395, 2396, 2397, 2398, 2399, 2400, 2401, 2402, 2403, 2404, 2405, 2406, 2407, 2408, 2409, 2410, 2411, 2412, 2413, 2414, 2415, 2416, 2417, 2418, 2419, 2420, 2421, 2422, 2423, 2424, 2425, 2426, 2427, 2428, 2429, 2430, 2431, 2432, 2433, 2434, 2435, 2436, 2437, 2438, 2439, 2440, 2441, 2442, 2443, 2444, 2445, 2446, 2447, 2448, 2449, 2450, 2451, 2452, 2453, 2454, 2455, 2456, 2457, 2458, 2459, 2460, 2461, 2462, 2463, 2464, 2465, 2466, 2467, 2468, 2469, 2470, 2471, 2472, 2473, 2474, 2475, 2476, 2477, 2478, 2479, 2480, 2481, 2482, 2483, 2484, 2485, 2486, 2487, 2488, 2489, 2490, 2491, 2492, 2493, 2494, 2495, 2496, 2497, 2498, 2499, 2500, 2501, 2502, 2503, 2504, 2505, 2506, 2507, 2508, 2509, 2510, 2511, 2512, 2513, 2514, 2515, 2516, 2517, 2518, 2519, 2520, 2521, 2522, 2523, 2524, 2525, 2526, 2527, 2528, 2529, 2530, 2531, 2532, 2533, 2534, 2535, 2536, 2537, 2538, 2539, 2540, 2541, 2542, 2543, 2544, 2545, 2546, 2547, 2548, 2549, 2550, 2551, 2552, 2553, 2554, 2555, 2556, 2557, 2558, 2559, 2560, 2561, 2562, 2563, 2564, 2565, 2566, 2567, 2568, 2569, 2570, 2571, 2572, 2573, 2574, 2575, 2576, 2577, 2578, 2579, 2580, 2581, 2582, 2583, 2584, 2585, 2586, 2587, 2588, 2589, 2590, 2591, 2592, 2593, 2594, 2595, 2596, 2597, 2598, 2599, 2600, 2601, 2602, 2603, 2604, 2605, 2606, 2607, 2608, 2609, 2610, 2611, 2612, 2613, 2614, 2615, 2616, 2617, 2618, 2619, 2620, 2621, 2622, 2623, 2624, 2625, 2626, 2627, 2628, 2629, 2630, 2631, 2632, 2633, 2634, 2635, 2636, 2637, 2638, 2639, 2640, 2641, 2642, 2643, 2644, 2645, 2646, 2647, 2648, 2649, 2650, 2651, 2652, 2653, 2654, 2655, 2656, 2657, 2658, 2659, 2660, 2661, 2662, 2663, 2664, 2665, 2666, 2667, 2668, 2669, 2670, 2671, 2672, 2673, 2674, 2675, 2676, 2677, 2678, 2679, 26

1:125 A221

TITLE BLOCK SIZE- 915 x 1400

RECEIVED 2000 JAN 20

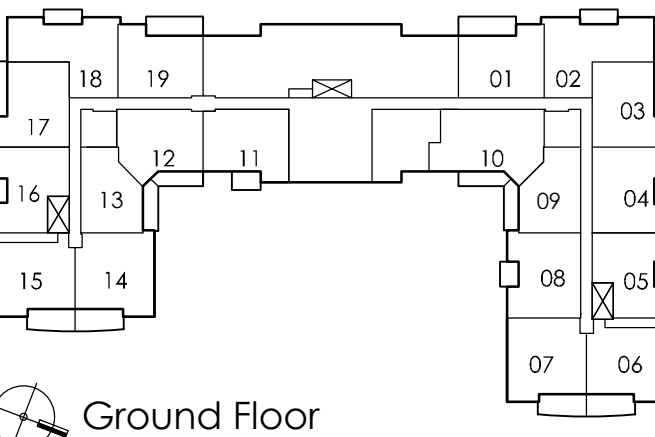
PROPERTY LINE

This drawing, as an instrument of service, is provided by and is the property of Grazianni & Corazza Architects Inc. The architect must verify and accept responsibility for all dimensions and conditions on site and must notify Grazianni & Corazza Architects Inc. of any variations from the approved information. Grazianni & Corazza Architects Inc. is not responsible for the accuracy of any drawings, technical specifications, etc., prepared by others and shown on this drawing. The architect warrants against errors and omissions in this drawing. Construction must conform to all applicable codes and requirements of the authorities having jurisdiction. Other drawings shall be investigated for any variations or reported on by this office in regard to the environmental condition of this site. This drawing is not to be used for construction purposes until counterchecked by the architect.

This drawing is not to be used for construction purposes until counterchecked by the architect.

- | | | |
|------------------|---|------|
| 01. FEB.28.2014 | issued to city for SPA | B.G. |
| 02. JUL.9.2014 | re-issued to city for SPA | B.G. |
| 03. SEP.11.2014 | re-issued to city for SPA | B.G. |
| 04. JAN.15.2015 | re-issued to city for SPA | B.G. |
| 05. MAR.15.2015 | issued for tender | B.G. |
| 06. DEC.28.2016 | issued for building permit | B.G. |
| 07. MAY.10.2017 | re-issued for building permit | B.G. |
| 08. MAY.10.2017 | issued for Footings and Foundation Permit | B.G. |
| 10. JULY.19.2017 | Progress for Construction | B.G. |
| 11. AUG.09.2017 | issued for Construction | B.G. |
| 12. OCT.25.2017 | Revision to Envelope | B.G. |
| 13. APR.04.2018 | Re-issued for Building Permit | B.G. |

PROPERTY LINE



- | | | |
|------------------|-----------------------------------|------|
| 04. DEC.13.2018 | S21 JANITORIAL ROOM & REVED DOORS | B.G. |
| 05. FEB.12.2018 | S13 REVISING OPERABLE WINDOWS | B.G. |
| 02. DEC.07.2017 | S10 SHOWING BARRIER-FREE SYMBOL | B.G. |
| 01. SEPT.06.2017 | S106 TRANSOM/BULKHEADS REVISION | B.G. |

issued for revisions

GRAZIANI
CORAZZA
ARCHITECTS INC.

1325 Denison Street, Suite 101, Richmond Hill, Ontario L4B 1C1
Phone: 905.705.2621 Fax: 905.705.2644 www.gc-architects.com

PROPOSED RESIDENTIAL DEVELOPMENT

25 BAKER HILL BLVD.

ROYAL PINES HOMES

STOUFFVILLE ONTARIO
Project Architect: B. GRAZIANI
Assistant Designer: R. LINCOLN
Drawn By: S.G.
Checked By: G. COLANGELO/D.BIASE
Plot Date: Jul. 4, 2018
Job #: 1136.13

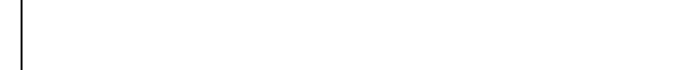
GROUND FLOOR PLAN
OVERALL PLAN

1:100 A301

TITLEBLOCK SIZE: 915 x 1400

CEILING HEIGHTS			
FLOOR	FOYER & KITCHEN	BULKHEADS	LIVING/ DINING/DEN/BEDROOM
GRD	2950	2750	2950
2ND	2600	2450	SLAB AT 2750
3RD	2600	2450	SLAB AT 2750
4TH	2600	2450	SLAB AT 2750
5TH	2600	2450	SLAB AT 2750 / 2700
6TH	2600	2450	SLAB AT 2750 / 2700
7TH	2900	2750	3050

This drawing is not to be scaled. All architectural symbols indicated on this drawing or graphic representations only.



issued for revisions



ROYAL PINES HOMES

Project Architect: B. GRAZIANI

Checked By: G.COLANGELO/D.BIASE

Job # 1136.13

PART PLAN

1:50 A301b

TITLEBLOCK SIZE: 915 x 1400
