

## GENERAL NOTES:

- MAINTENANCE AND ACCEPTANCE:**
  - ALL PLANT MATERIAL SHALL BE MAINTAINED BY THE CONTRACTOR IMMEDIATELY AFTER ANY PLANTING HAS BEEN INSTALLED AND SHALL CONTINUE UNTIL THE DATE OF FINAL ACCEPTANCE.
  - SUCH MAINTENANCE SHALL INCLUDE ALL MEASURES NECESSARY TO ESTABLISH AND MAINTAIN ALL PLANTS IN AN ACCEPTABLE, VIGOROUS AND HEALTHY GROWING CONDITION INCLUDING CULTIVATING AND WEEDING, WATERING WHEN REQUIRED, PRUNING AND MAINTENANCE OF ALL ACCESSORIES.
  - AT TIME OF INSPECTION FOR INITIAL & FINAL ACCEPTANCE, ALL PLANTING BEDS AND TREE PITS SHALL BE FRESHLY CULTIVATED, FREE OF WEEDS, LEAVES, BROWN BRANCHES AND RUBBISH AND SHALL BE IN A NEAT AND TIDY CONDITION.
  - ALL PLANT MATERIAL TO BE GUARANTEED FOR A PERIOD OF 2 (TWO) YEARS FROM THE DATE OF ACCEPTANCE BY THE LANDSCAPE ARCHITECT AND LOCAL AUTHORITY UNLESS OTHERWISE NOTED.
  - MAINTAIN PLANTING BEDS AND TREE PITS FREE OF WEEDS THROUGHOUT THE GUARANTEE PERIOD.
  - THE DEVELOPER SHALL REGULARLY REMOVE DEBRIS FROM THE WETLAND UNTIL THE COMPLETION OF ALL BUILDING CONSTRUCTION WITHIN THE DEVELOPMENT.

## UTILITIES:

- APPLICANT IS RESPONSIBLE FOR OBTAINING NECESSARY APPROVALS FROM THE UTILITY COMPANIES FOR WORKS WITHIN THE MUNICIPAL BOUNDARY.
- ALL UTILITIES WITHIN THE BOUNDARIES MUST BE LOCATED PRIOR TO COMMENCING CONSTRUCTION WITHIN THE BOUNDARY.

## RODENT PROTECTION:

- THE CONTRACTOR SHALL BE RESPONSIBLE FOR THE PROTECTION OF ALL TREES AND SHRUBS FROM RODENT INJURY FOR THE DURATION OF THE GUARANTEE PERIOD.
- PROTECTIVE WIRE MESH GUARDS SHALL BE EMPLOYED AROUND ALL DECIDUOUS TREES. GUARDS SHALL BE INSTALLED PRIOR TO THE APPLICATION OF MULCH AND SHOULD BE PLACED AT A MINIMUM OF 50mm OUT FROM THE TREE TRUNK ON ALL SIDES. SUFFICIENT MESH SHOULD BE PUT TO COMPLETE THIS CIRCUMFERENCE AS WELL AS TO PROVIDE A MINIMUM OF 2500mm CLEARANCE AROUND THE WIRE MESH GUARDS MUST BE OF GALVANIZED STEEL WITH SQUARE MESH, 19 GAUGE AND SUPPLIED IN 4000mm ROLLS. THE WIRE MESH CAN BE FASTENED WITH ANY ACCEPTABLE GALVANIZED WIRE TIE, ALL SHRUBS AND CONIFEROUS TREES SHALL HAVE AN APPLICATION OF "3000T" OR APPROVED EQUIVALENT RODENT FORMULA, TO BE APPLIED AT THE END OF OCTOBER, FOLLOW MANUFACTURER'S DIRECTIONS FOR APPLICATION.

## TOPSOIL:

- USE EVENLY MIXED TOPSOIL OF FERTILE, FRIABLE NATURAL LOAM CONTAINING NOT LESS THAN 4% ORGANIC MATTER FOR CLAY LOAMS AND 2% MINIMUM ORGANIC MATTER FOR SAND LOAMS WITH AN ACIDITY RANGE OF 5.5 TO 7.5 pH.
- ALL TOPSOIL SHOULD BE FREE OF SUBSOILS, CLAY, STONES, ROOTS, EXCESS WATER, FROST AND OTHER EXTRANEOUS MATTER.

## CARPENTRY:

- (UNLESS OTHERWISE SPECIFIED)
- ALL LUMBER SHALL BE NO. 1 GRADE WESTERN CEDAR UNLESS OTHERWISE STATED, AND SHALL BE STAMPED IN ACCORDANCE WITH THE CURRENT REQUIREMENTS OF THE LATEST NLGA STANDARD GRADING RULES.
- PRESSURE TREATED WOOD SHALL BE EITHER PINE, SPRUCE, OR FIR. THIS WOOD SHALL BE PRESSURE TREATED WITH A.C.O.-8 (ALKALINE COPPER QUAT TYPE B) OR OTHER APPROVED WATERBORNE CHEMICAL IN ACCORDANCE WITH THE LATEST REQUIREMENTS OF C.S.A.-080.
- ALL CEDAR LUMBER IS TO BE STAINED WITH ONE COAT OF A LATEX STAIN AS APPROVED BY THE LANDSCAPE ARCHITECT BEFORE APPLICATION.
- ALL WOOD SHALL BE SELECTED FOR UNIFORM APPEARANCE AND SIZE, SHALL BE STRUCTURALLY SOUND AND SHALL BE FREE OF SPLITS, CRACKS AND LOOSE AND OPEN KNOTS.
- ALL WOOD SHALL BE DRESSED FOUR SIDES.
- ALL SPIKES AND NAILS SHALL BE "ARDOX" SPIRAL SHANK.
- ALL SPIKES, NAILS, BOLTS, NUTS AND ANY OTHER METAL FASTENERS AND CONNECTORS SHALL BE HOT DIPPED GALVANIZED IN ACCORDANCE WITH C.S.A.-084.
- CONCRETE FOR FOOTINGS SHALL HAVE A COMPRESSIVE STRENGTH OF 20.7 M.P.A. IN 28 DAYS (MIN).
- MAKE ALL TIMBER CUTS STRAIGHT AND PLUMB TO INSURE A TIGHTLY BUTTED FLUSH JOINT PRIOR TO CUTS TO PRESSURE TREATED WOOD, WITH ONE COAT OF APPROVED PRESERVATIVE PRIOR TO ASSEMBLY.
- COUNTERSINK ALL BOLTS, NUTS, PLATES, ANCHORS, ETC. IN ORDER TO BE FLUSH WITH WOOD SURFACE AND AS DETAIL.

## PLANTING:

- (UNLESS OTHERWISE SPECIFIED)
- PREPARE PLANTING SOIL BY EVENLY MIXING FOUR PARTS SANDY TOPSOIL, ONE PART ORGANIC SOIL ADDITIVE WITH 500g BONE MEAL AND 750g COMMERCIAL FERTILIZER PER CUBIC METER.
- THE FOREGOING RATES ARE SUBJECT TO ADJUSTMENT ON RECEIPT OF TOPSOIL ANALYSIS REPORT.
- EXCAVATE AND PROVIDE PLANTING SOILS AS PER PLANTING DETAILS.
- PROVIDE ALL SHRUBS AND TREES ACCORDING TO THE GUIDE SPECIFICATIONS FOR NURSERY STOCK OF THE CANADIAN NURSERY TRADE ASSOCIATION WITH REGARD TO QUALITY AND GRADING AND SIZED AS PER PLANT LIST.
- SPRAY ALL PLANTINGS IN LEAF WITH ANTIDISCANT.
- PROTECT TREES WITH STAKES.
- PLANTS ARE TO BE NO. 1 NURSERY GROWN, UNDER PROPER CULTURAL PRACTICES, IN PARTICULAR WITH RESPECT TO AMPLE SPACING, PEST AND DISEASE CONTROL, AND BRANCH AND ROOT PRUNING.
- TREES ARE TO HAVE STURDY, STRAIGHT TRUNKS.
- TREES SHALL BE WELL BRANCHED AND BALANCED WITH A STRONG CENTRAL LEADER.
- DECIDUOUS SHADE TREES SHALL BE FREE OF BRANCHES NOT LESS THAN 1.8m ABOVE THE GROUND.
- ALL SHRUBS ARE TO BE PLANTED IN CONTINUOUS BEDS.
- DO NOT SOD BETWEEN PLANTS. EXCAVATE ENTIRE AREA OF SHRUB BED UNIFORMLY TO SPECIFIED DEPTH AND FILL WITH SPECIFIED PLANTING SOIL.

## TREE LOCATION:

- TREES ARE NOT TO BE PLANTED UNDER OVERHEAD WIRES OR OVER UNDERGROUND SERVICES.
- TREES ARE NOT TO BE PLANTED LESS THAN 10m FROM CURBS, UNDERGROUND UTILITIES, SIDEWALKS AND DRIVEWAYS.
- DO NOT FROM FIRE HYDRANTS AND TRANSFORMERS, AND 4m FROM LIGHT FIXTURES.
- THE CONTRACTOR IS TO STAKE OUT LOCATIONS OF TREE PITS. THIS STAKE OUT IS TO BE INSPECTED BEFORE THE EXCAVATION OF ANY TREE PITS.
- BEFORE THIS STAKE OUT, THE CONTRACTOR IS TO REQUEST A STAKE OUT, ALL UNDERGROUND SERVICES.
- THE LANDSCAPE ARCHITECT AND THE MUNICIPALITY MAY, AT THEIR DISCRETION REQUIRE TREE LOCATIONS PRIOR TO PLANTING, IN ORDER TO MINIMIZE CONFLICTS WITH UTILITIES, DRIVEWAYS AND INTERSECTION VISIBILITY.

## SODDING:

- PREPARE A MINIMUM 100mm DEPTH OF TOPSOIL WITH A 10-6-4 COMMERCIAL FERTILIZER AT 7.36g/100sqm, AND SUPER PHOSPHATE AT 5g/100sqm, THE PROPORTIONS SPECIFIED ARE SUBJECT TO ADJUSTMENT DEPENDING ON TOPSOIL ANALYSIS REPORT.
- LAY No. 1 NURSERY SOD ON ALL AREAS OF THE PROJECT NOT COVERED BY BUILDINGS OR PAVING.
- THE CONTRACTOR IS RESPONSIBLE FOR LOCATION OF ALL UNDERGROUND SERVICES PRIOR TO EXCAVATION OF TREE PITS AND SHRUB BEDS.
- All T-bars to be removed at the conclusion of the warranty.
- Any transformer installed subsequent to site plan approval shall be screened with plant material to the satisfaction of the City of Brampton.
- All signage is subject to the provisions of the sign by-law.

## UNIT PAVING:

- PAVERS SHALL BE PRECAST CONCRETE UNIT PAVERS WITH MIN. 58.65 M.P.A. (6500 P.S.I.) COMPRESSIVE STRENGTH, AND A WATER ABSORPTION NOT EXCEEDING 5% AND A FREEZE-THAW RESISTANCE EQUAL TO C.S.A.-A82-2 (1987).
- SETTING BED SHALL CONSIST OF SHARP, CLEAN, COARSE CONCRETE SAND OR APPROVED LIMESTONE SCREENING, CRUSHED STONE OR ROCK.
- SAND FOR JOINTS SHALL BE A CLEAN, NATURAL GRAVEL.
- INSTALL GRANULAR BASE AND COMPACT TO A MINIMUM 8% STANDARD PROCTOR DENSITY UNTIL THE MIN. SPECIFIED DEPTH AS DETAILED, HAS BEEN ESTABLISHED.
- LOCALLY PLACED CONCRETE SAND OR SCREENINGS TO A UNIFORM DEPTH OF 50mm (2") MIN.
- MAINTAIN JOINTS UNIFORM AND CLOSELY BUTTED THROUGHOUT.
- WHERE NECESSARY, SAW CUT PAVERS TO PRODUCE A SHARP, VERTICAL CUT WITHOUT DAMAGED EDGES, AND TO FIT ACCURATELY.
- AFTER COMPLETION OF INSTALLATION, COMPACT PAVING BY MEANS OF A VIBRATING PLATE TAMPER.
- FILL THE JOINTS WITH FINE SAND, BY BRUSHING AND SWEEPING, HOSE PAVING WITH FINE WATER SPRAY.

## BRAMPTON STANDARD NOTES

- The Contractor must notify the Planning, Design & Development Department of the City of Brampton prior to commencement of any planting.
- The locations of all trees on street frontages must be approved by the Planning, Design & Development Department prior to their installation.
- The Owner is required, upon completion, of all landscape works to submit an Acceptance Certificate prepared by a Landscape Architect to the Planning, Design & Development Department and to request an inspection by the Department.
- All landscape works shall be guaranteed for one year following inspection. Plant material which is not in a healthy growing condition one year after inspection shall be replaced to the satisfaction of the City with an additional one year maintenance guarantee period. Supply and plant all replacements in strict accordance with plans and specifications.
- Sod that is damaged or missing on the public boulevard is to be repaired/installed at the Owner's expense.
- Any chain link fencing and components that are installed subsequent to Site Plan approval shall have a shop applied black enamel finish by powder coat application. Prior to application of finish, treat with Parker Bonderite and chlorinated solvent. Powder coat finish to be applied in a thickness of 4-5 mils by electrostatic coat and oven cured for smooth and even surface. Chain link fabric to be black vinyl coated.
- The Contractor is responsible for location of all underground services prior to excavation of tree pits and shrub beds.
- All T-bars to be removed at the conclusion of the warranty.
- Any transformer installed subsequent to site plan approval shall be screened with plant material to the satisfaction of the City of Brampton.
- All signage is subject to the provisions of the sign by-law.

## LANDSCAPE STANDARD NOTES FOR SITE PLAN PROJECTS

- THE OWNER OR CONTRACTOR SHALL REQUEST AN INSPECTION BY THE PLANNING, DESIGN & DEVELOPMENT DEPARTMENT UPON COMPLETION OF ALL LANDSCAPE WORKS.
- ALL LANDSCAPE WORK SHALL BE GUARANTEED FOR ONE YEAR FOLLOWING INSPECTION. PLANT MATERIAL WHICH IS NOT IN A HEALTHY GROWING CONDITION ONE YEAR AFTER INSPECTION SHALL BE REPLACED SUPPLY AND PLANT ALL REPLACEMENTS IN STRICT ACCORDANCE WITH PLANS AND SPECIFICATIONS.
- THE CONTRACTOR IS RESPONSIBLE FOR LOCATION OF ALL UNDERGROUND SERVICES PRIOR TO EXCAVATING TREE PITS AND SHRUB BEDS AND GRADING.
- THE OWNER IS REQUIRED TO FORWARD ON COMPLETION OF THE LANDSCAPE WORK, A COPY OF AN ACCEPTANCE CERTIFICATE PREPARED BY THE LANDSCAPE ARCHITECT TO THE PLANNING, DESIGN & DEVELOPMENT DEPARTMENT.

## NOTE:

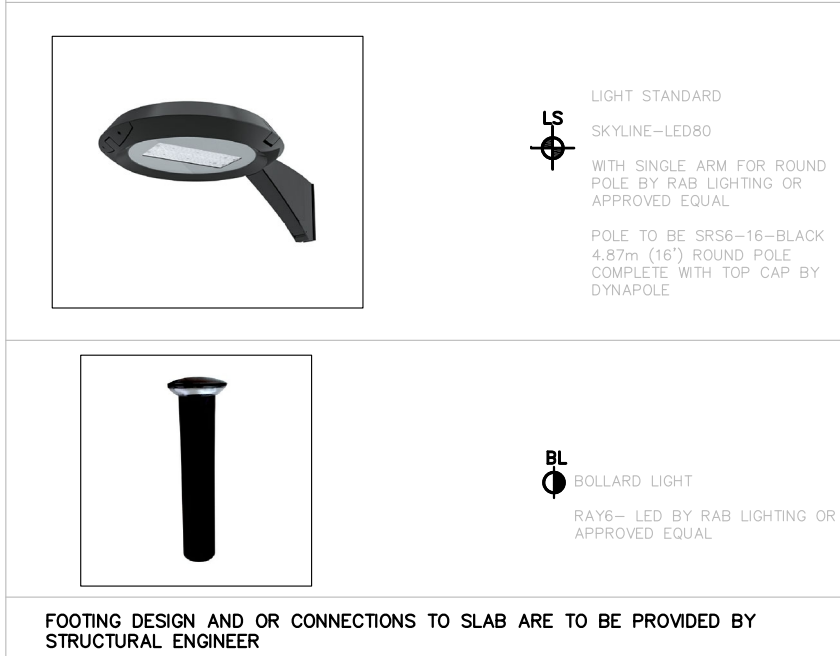
- EXISTING PLANT MATERIAL THAT DIES DUE TO CONSTRUCTION SHALL BE REPLACED TO SATISFACTION OF THE CITY OF BRAMPTON.

## PAVING SCHEDULE AND LEGEND BY OAKS OR APPROVED EQUAL

TYPE 'A'	PRIVATE PATIOS BY OAKS OR APPROVED EQUAL
FIELD	FIELD
WALKWAY	WALKWAY
TYPE 'B'	WALKWAYS BY OAKS OR APPROVED EQUAL
TYPE 'C'	AMENITY AREAS BY OAKS OR APPROVED EQUAL

## LIGHTING LEGEND

- FINAL LOCATIONS AND SPECIFICATIONS OF LIGHT STANDARDS, AND BOLLARD LIGHTS TO BE DETERMINED BY ELECTRICAL ENGINEER.



## PLANT LIST

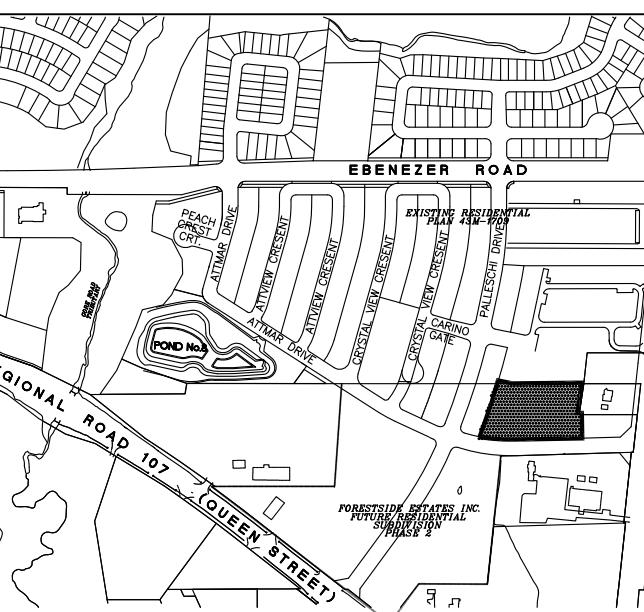
KEY	QTY.	BOTANICAL NAME	COMMON NAME	HEIGHT	BREAD	CAL.	SPACING	COND.	REMARKS	ON	DT	ST	CAUTION
<b>BROADLEAF TREES</b>													
AF	10	Acacia fraseri 'Celebration'	Celebration Maple	4000	2000	70	as shown	WB	FULL FORM				
GB	5	Ginkgo biloba	Ginkgo	4000	2000	60	as shown	WB	FULL FORM				
GD	6	Gymnocladia dioica	Kentucky Coffee Tree	4000	2000	60	as shown	WB	FULL FORM				
QM	10	Quercus macrocarpa	Burr Oak	4000	2000	60	as shown	WB	FULL FORM				
TA	7	Taxus canadensis 'Bovard'	Bovard Linden	4000	2000	60	as shown	WB	FULL FORM				
<b>NARROW TREES</b>													
AGR	8	Acacia ginkgo 'Flame'	Flame Amure Maple	4000	2000	60	as shown	WB	TREE FORM				
AGR	5	Acacia ginkgo 'Flame'	Flame Amure Maple	4000	2000	60	as shown	WB	TREE FORM				
ALF	5	Amanchier 'Isola Spring Fury'	Spring Fury Serviceberry	2000	1500	50	as shown	WB	TREE FORM				
CB	20	Cornus baccata 'Trans Fontaine'	Fontaine Fontaine Honeysuckle	3500	1500	50	as shown	WB	FULL FORM				
LS	7	Liquidambar styraciflua 'Stender Silhouette'	Silhouette Sweetgum	4000	2000	60	as shown	WB	FULL FORM				
MR	11	Malus baccata 'Columnaris'	Columnar Siberian Crabapple	3500	1000	50	as shown	WB	FULL FORM				
PC	10	Pyrus columbia 'Chantrelle'	Chantrelle Ornamental Pear	4000	2000	60	as shown	WB	FULL FORM				
SR	11	Syringa reticulata 'Topsy Turvy'	Topsy Turvy Japanese Tree Lilac	4000	2000	60	as shown	WB	FULL FORM				
VI	4	Viburnum lentago	Nannyberry	2000	1500	40	as shown	WB	TREE FORM				
<b>DECIDUOUS SHRUBS</b>													
Ag	5	Amanchier 'condensata Rainbow Pillar'	Rainbow Pillar Serviceberry	1500	1500	-	as shown	CG	FULL FORM				
Ac	5	Amanchier x grandiflora 'Autumn Brilliance'	Autumn Brilliance Serviceberry	2000	1250	50	as shown	WB	FULL FORM				
Cor	40	Cornus alternifolia 'Ruba Spica'	Ruby Spice Sweet Pepperbush	400	-	-	as shown	CG	FULL FORM				
CSw	189	Cornus sericea 'Arctic Fire'	Arctic Fire Dogwood	600	-	-	as shown	CG	FULL FORM				
CSw	5	Cornus sanguinea 'Winter Beauty'	Winter Beauty Dogwood	500	-	-	as shown	CG	FULL FORM				
Es	60	Eurospiral 'dotted' 'Compagata'	Dwarf Winged Burning Bush	700	-	-	as shown	CG	FULL FORM				
Ho	204	Hydrangea arborescens 'Incrediball'	Incrediball Hydrangea	700	-	-	as shown	CG	FULL FORM				
Hpl	7	Hydrangea paniculata 'Vine and Ice'	Vine and Ice Hydrangea	600	-	-	as shown	CG	FULL FORM				
Hsp	5	Hydrangea paniculata 'Grandiflora'	Grandiflora Hydrangea	700	-	-	as shown	CG	FULL FORM				
Hpl	192	Hydrangea paniculata 'Limelight'	Limelight Hydrangea	600	-	-	as shown	CG	FULL FORM				
PI	309	Potentilla fruticosa 'Abbotswood'	Abbotswood potentilla	500	-	-	as shown	CG	FULL FORM				
Ra	68	Rhus aromatica 'Coccinea'	Flameleaf Sumac	600	-	-	as shown	CG	FULL FORM				
Rv	48	Rosa rugosa 'Alba'	Rugosa Rose (White)	600	-	-	as shown	CG	FULL FORM				
SI	276	Spiraea japonica 'Goldmound'	Goldmound Spiraea	600	-	-	as shown	CG	FULL FORM				
Vi	65	Viburnum opulus 'Compositum'	Opel European Cranberry	250	-	-	as shown	CG	FULL FORM				
<b>CONIFEROUS SHRUBS</b>													
Bgg	238	Buxus 'Green Gem'	Green Gem Boxwood	350	-	-	as shown	SB	FULL FORM				
Cl	3	Thuja occidentalis 'Coplatia'	Clipped Promise Japanese Yew	400	-	-	as shown	SB	FULL FORM				
Tmd	139	Taxus x media 'Desformalis'	Desform Yew	-	-	-	as shown	CG	FULL FORM				
Trm	155	Taxus x media 'Hill'	Hill's Yew	-	-	-	as shown	SB	FULL FORM				
<b>PERENNIALS &amp; ORNAMENTAL GRASS</b>													
coa	258	Calamagrostis canadensis 'Avalanche'	Variegated Feather Reed Grass	2GAL	-	-	as shown	C02	FULL FORM				
coa	100	Calamagrostis canadensis 'Overdom'	Overdom Feather Reed Grass	2GAL	-	-	as shown	C02	FULL FORM				
coa	12	Echinops x amethystea 'Dawn'	Amethyst Dawn Echinops	2GAL	-	-	as shown	C02	FULL FORM				
coa	86	Gallardia x grandiflora 'Goblin'	Goblin Blanket Flower	2GAL	-	-	as shown	C02	FULL FORM				
coa	15	Hieracium 'Patric' 'June'	Green Arrow	2GAL	-	-	as shown	C02	FULL FORM				
coa	60	Hemerocallis 'Stella D'Oro Double'	Stella D'Oro Double	2GAL	-	-	as shown	C02	FULL FORM				
py	96	Panicum virgatum 'Shenandoah'	Shenandoah Switch Grass	2GAL	-	-	as shown	C02	FULL FORM				
py	160	Rudbeckia hirta 'Goldstrum'	Black-eyed Susan	2GAL	-	-	as shown	C02	FULL FORM				
py	84	Schizanthus litoralis 'The Blues'	Little Bluestem	2GAL	-	-	as shown	C02	FULL FORM				

## PLANTING NOTES:

- CHECK ALL QUANTITIES.
- REPORT ANY DISCREPANCIES TO THE LANDSCAPE ARCHITECT.
- THE QUANTITIES INDICATED ON THE PLAN REPRESENT THE TOTALS OF THE PLANT USE.
- THE LAYOUT OF ALL PLANT MATERIAL IS TO BE APPROVED BY THE LANDSCAPE ARCHITECT PRIOR TO PLANTING.

## GENERAL NOTES

- VERIFY ALL DIMENSIONS.
- DO NOT SCALE DRAWINGS.
- REPORT ANY DISCREPANCIES, DISCOVERED ERRORS, OR OMISSIONS TO THE LANDSCAPE ARCHITECT BEFORE PROCEEDING.
- IT IS ADVISED THAT CONTRACTORS CONTACT THE LANDSCAPE ARCHITECT PRIOR TO CONSTRUCTION TO ENSURE THE USE OF THE LATEST REVISED DRAWINGS.
- DRAWINGS AND SPECIFICATIONS ARE THE PROPERTY OF THE LANDSCAPE ARCHITECT.



## KEY PLAN

## LEGEND

- POTENTIAL FUTURE TREE
- PROPOSED BOULEVARD DECIDUOUS TREE
- PROPOSED DECIDUOUS TREE
- PROPOSED CONIFEROUS TREE
- PROPOSED SHRUBS AND PERENNIALS
- SODDING
- WOOD PRIVACY FENCE BY OTHER
- PROPOSED WOOD PRIVACY FENCE
- DECORATIVE METAL FENCE
- DECORATIVE METAL GATE
- LIMIT OF U/G PARKING
- BENCH
- BIKE RING
- PILLAR
- LIGHT STANDARD
- BOLLARD LIGHT
- IMPRESSED ASPHALT CROSSWALK

SHEET LIST	LANDSCAPE PLAN
L100	LANDSCAPE PLAN
L200	LANDSCAPE DETAILS
L201	LANDSCAPE DETAILS
L202	LANDSCAPE DETAILS
L203	LANDSCAPE DETAILS

## APPROVED

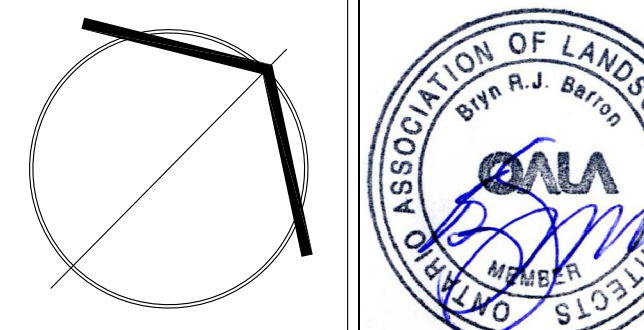
Planning and Development Services Department

Manager, Development Services

Date

No.	DATE.	REVISION.	BY.
3	10-01-2019	Issued For SPA SUBMISSION	BB
2	08-02-2019	Issued For Tender	BB
1	04-22-2019	For Submission	BB

It is the responsibility of the Contractor and/or Owner to ensure that the drawings with the latest revisions are used for construction.



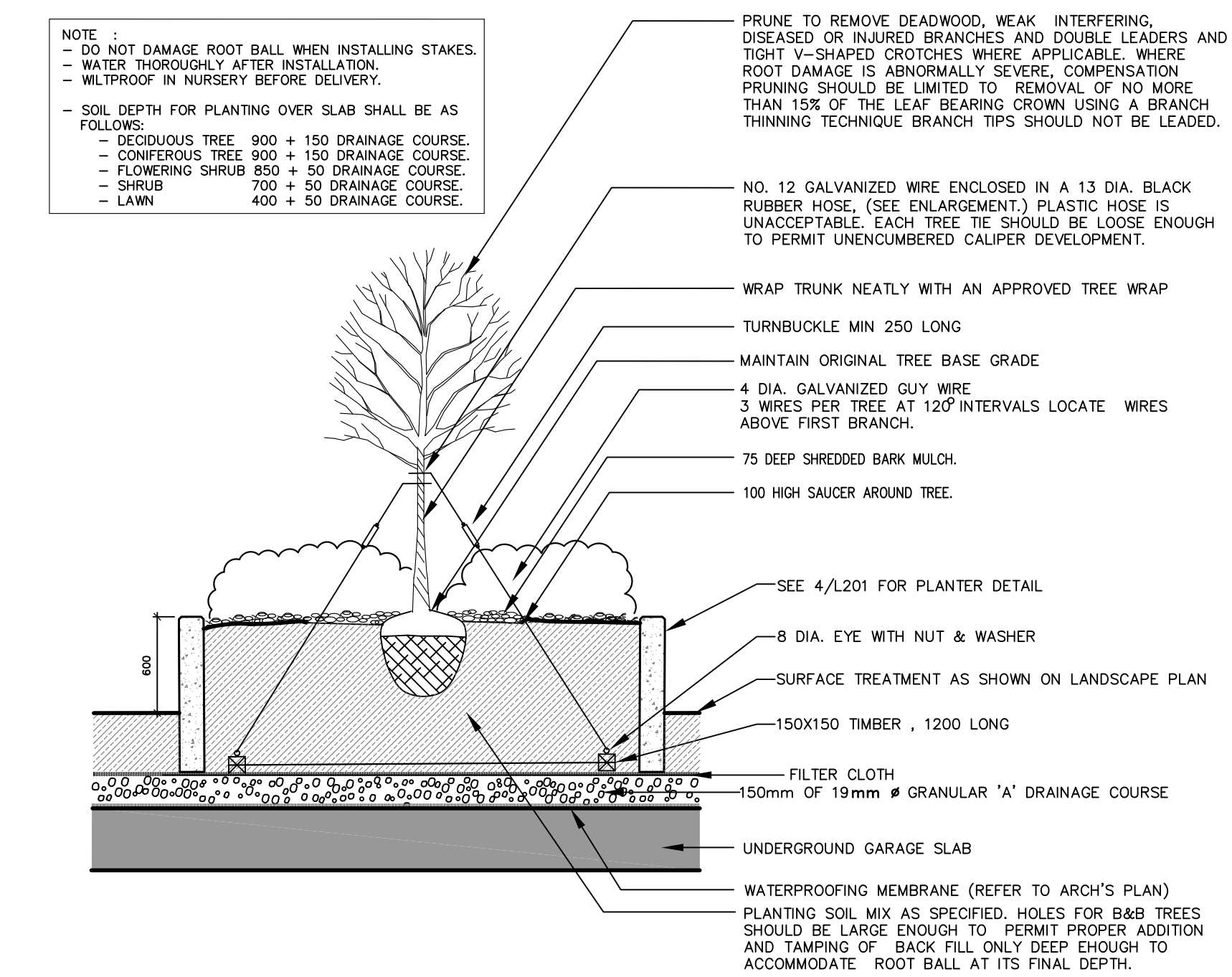
**SBK**  
STRYBOS BARRON KING  
LANDSCAPE ARCHITECTURE

PROJECT:  
**PROPOSED STACKED TOWNHOMES DEVELOPMENT**  
FORESTSIDE ESTATES INC  
65-95 ATTMAR DRIVE

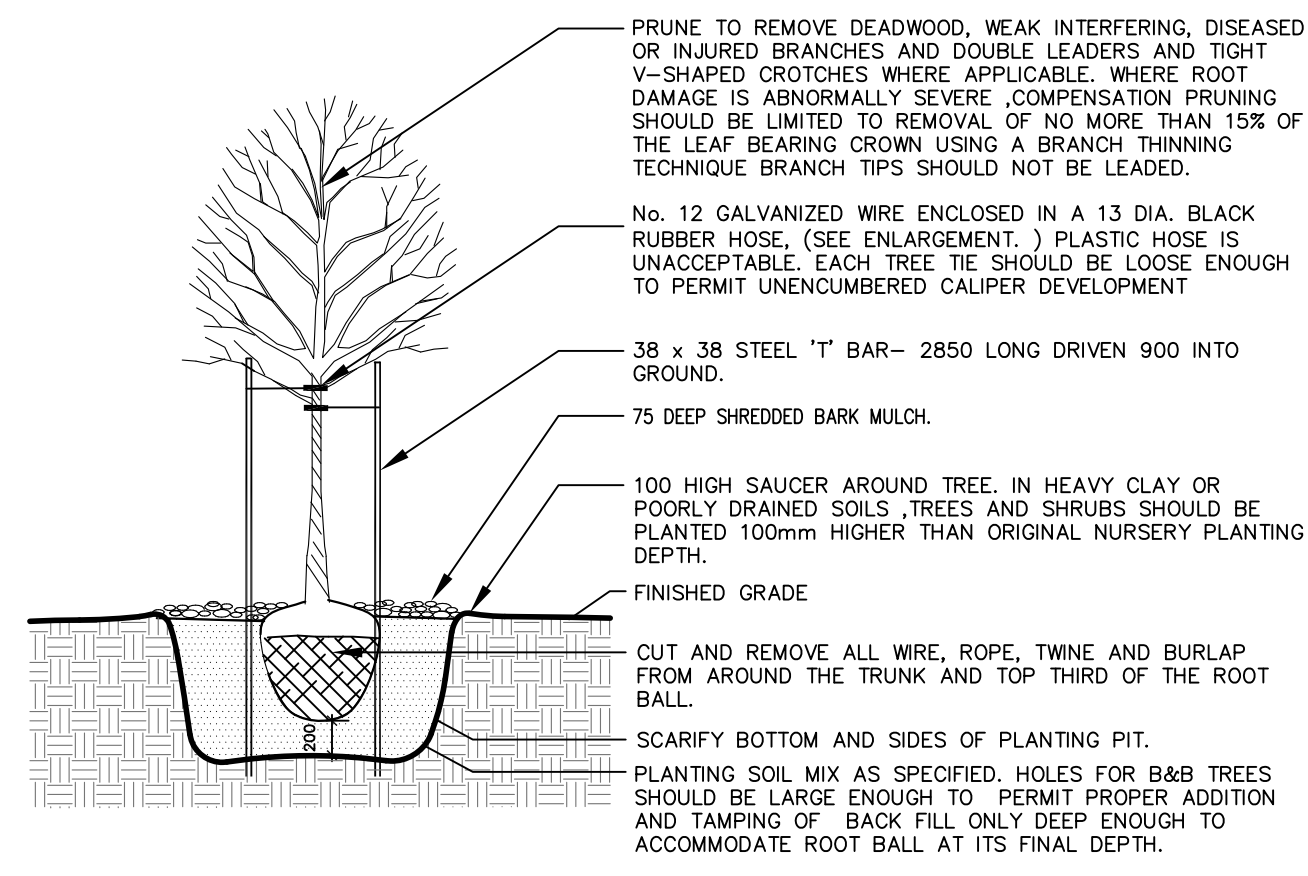
DRAWING TITLE:  
**LANDSCAPE PLAN**

SCALE:	PROJECT No.
1 : 200	18-5261
DATE:	DRAWING No.
MARCH 2019	L100
DRAWN BY:	
KG	
CHECKED BY:	
BB	

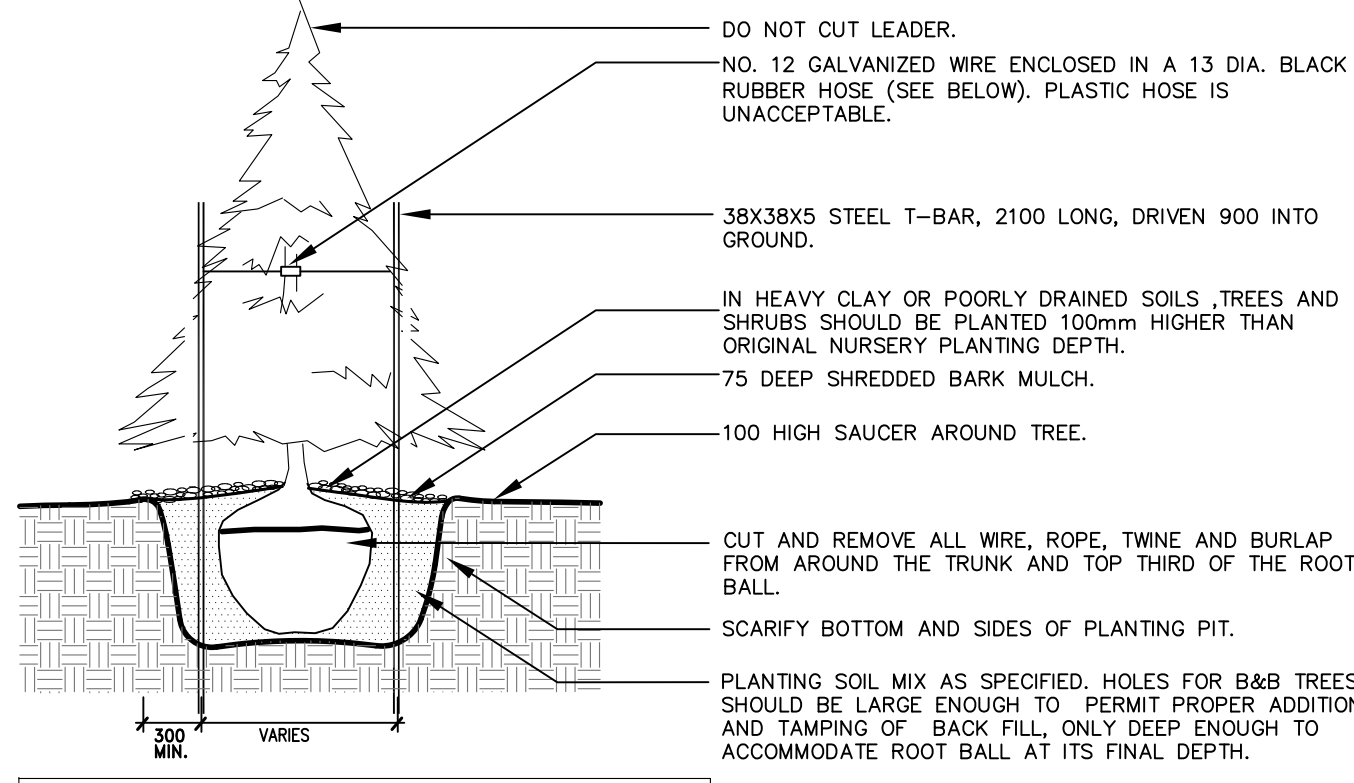




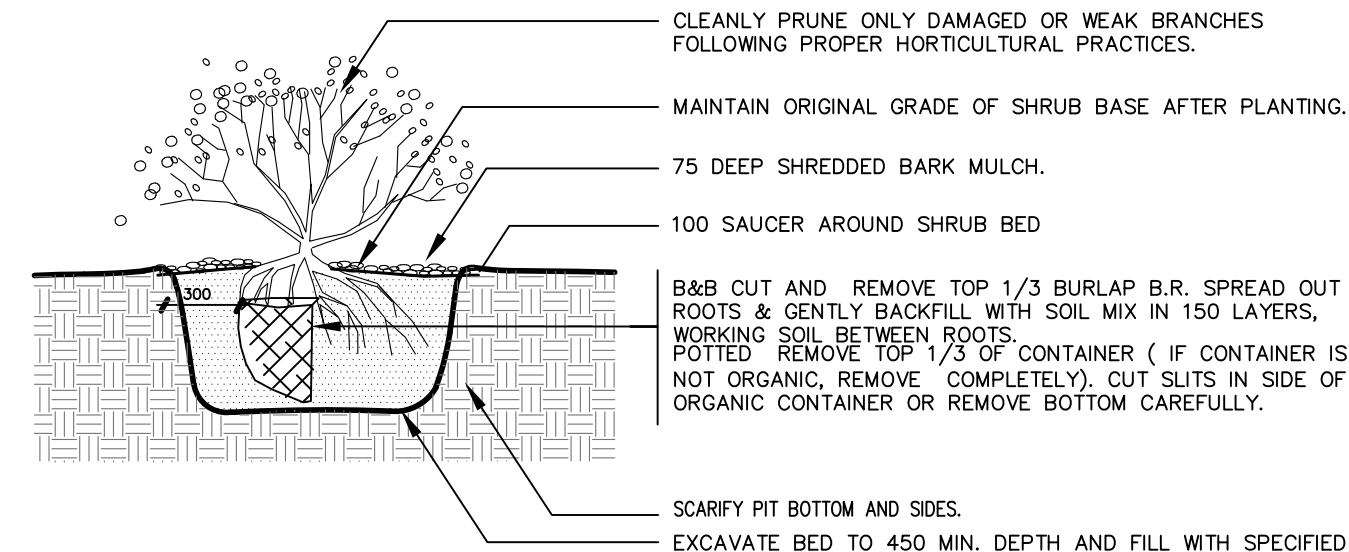
DECIDUOUS TREE PLANTING (ON SLAB)  
FOR TREES LESS THAN 80 mm CALIPER



DECIDUOUS TREE PLANTING DETAIL

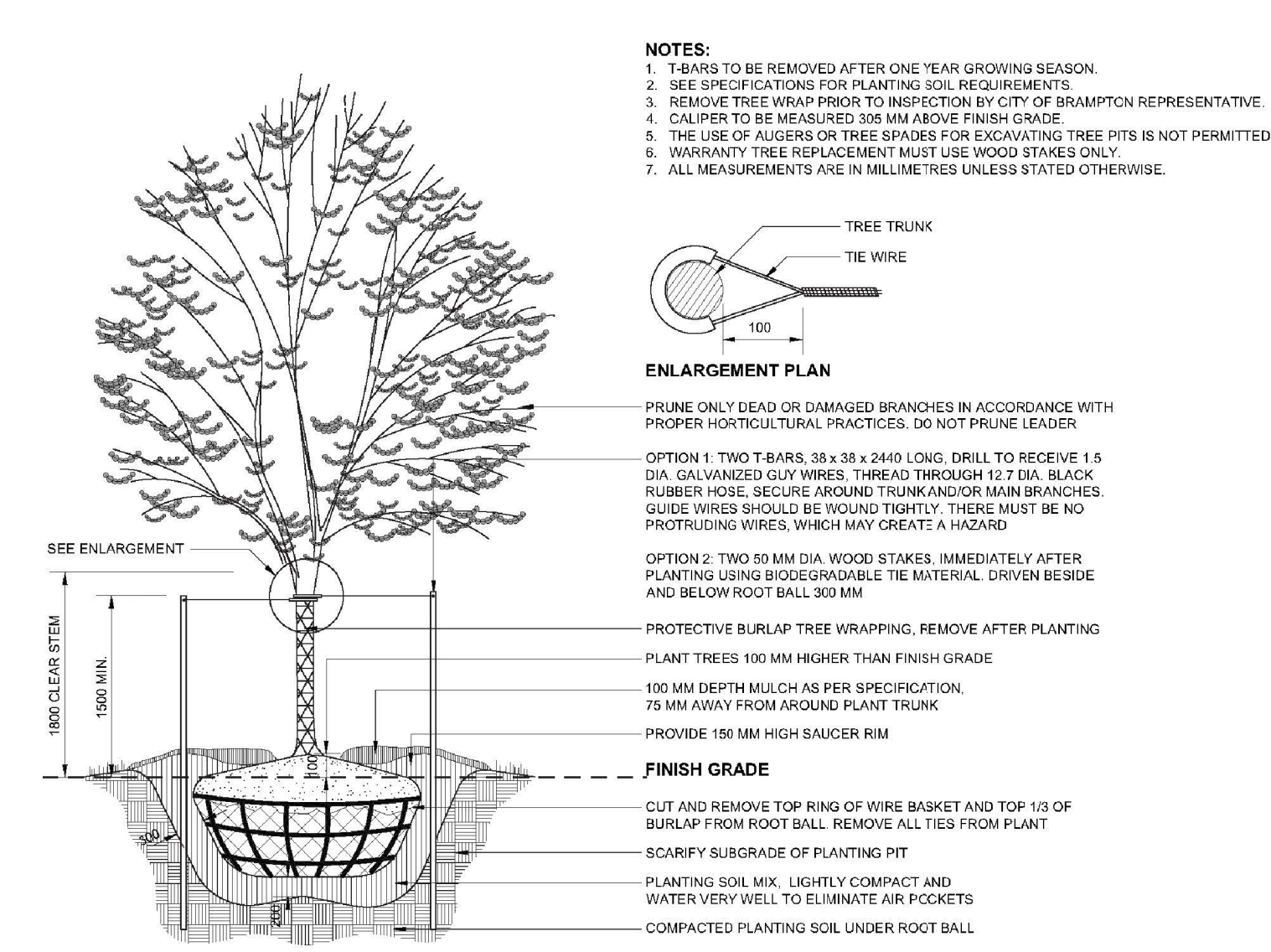


CONIFEROUS TREE PLANTING DETAIL

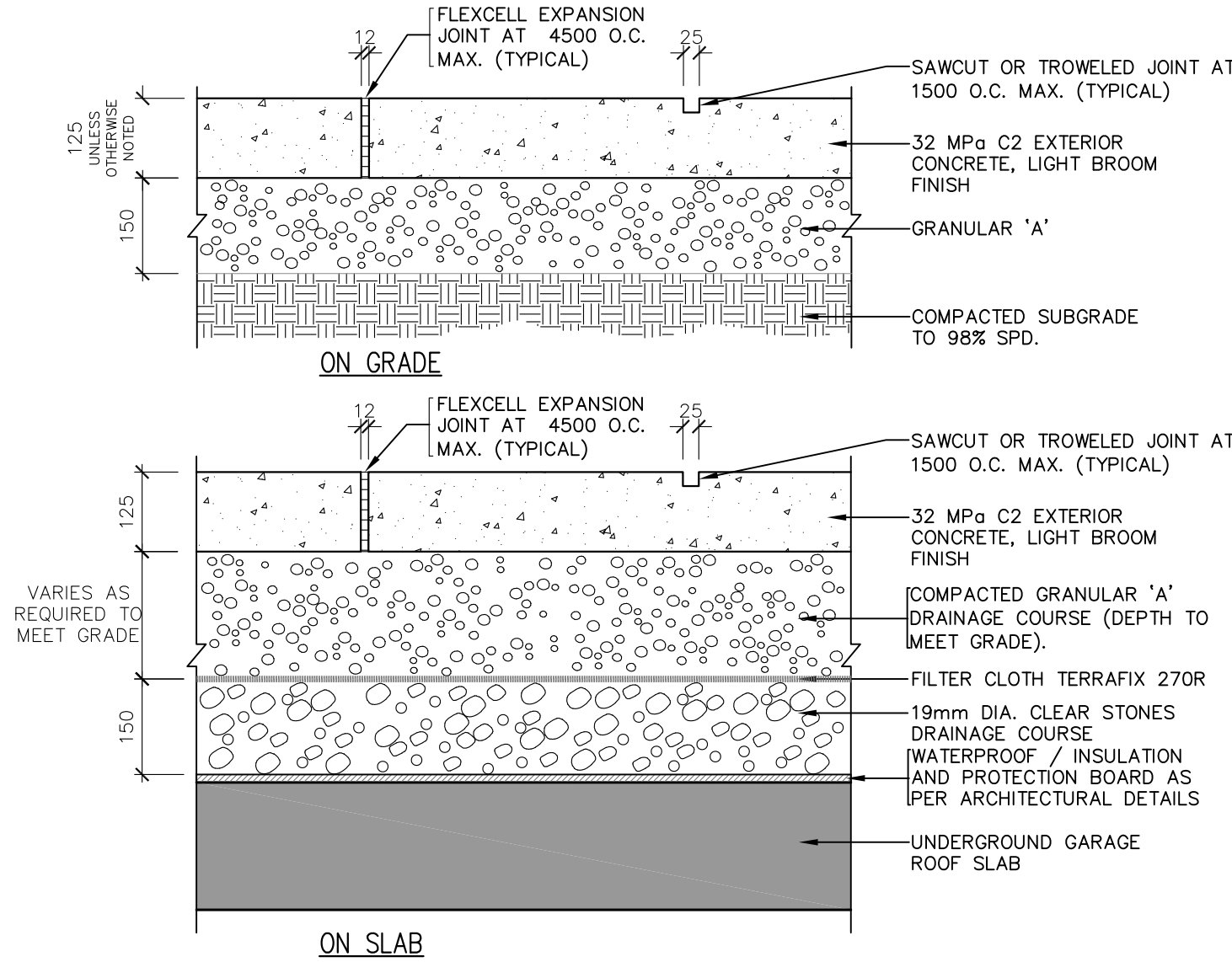


SHRUB PLANTING DETAIL

## 1 PLANTING DETAILS

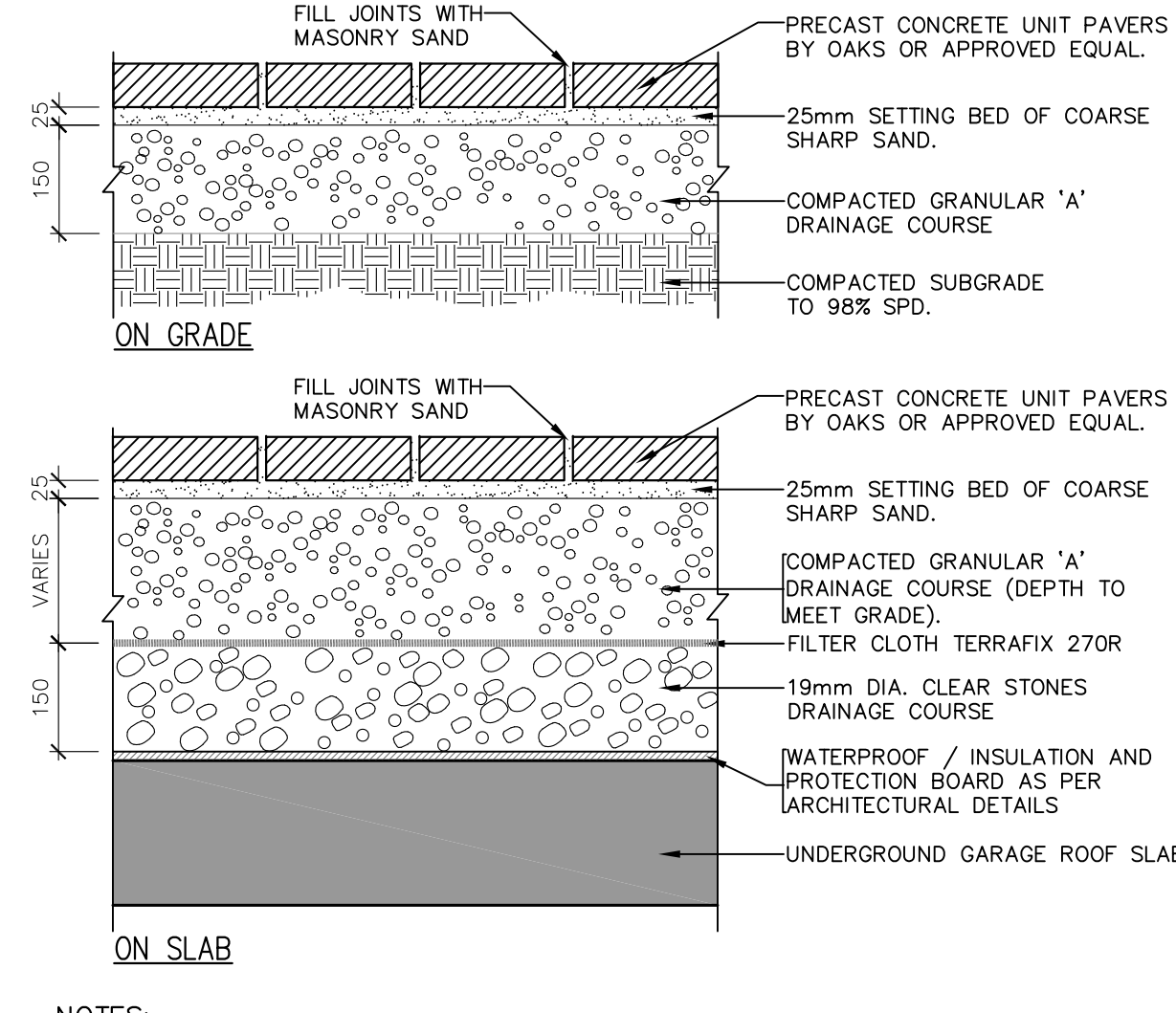


## 2 BOULEVARD TREE PLANTING DETAIL (CITY OF BRAMPTON)



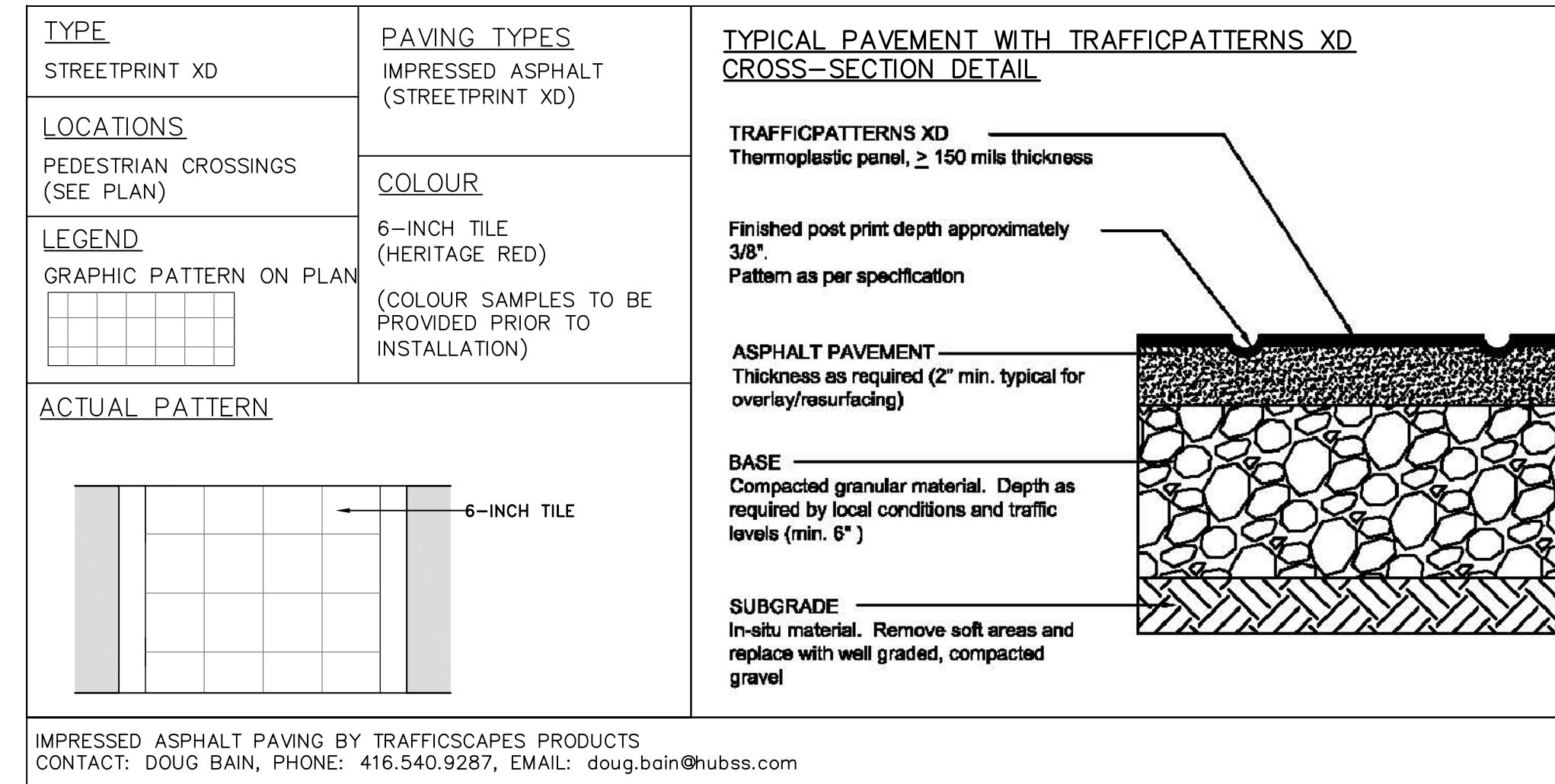
NOTES:  
FOR WALKWAYS AND GENERAL AREAS  
CONCRETE TO BE 125mm THICK UNLESS NOTED OTHERWISE.

## 3 CONCRETE PAVING



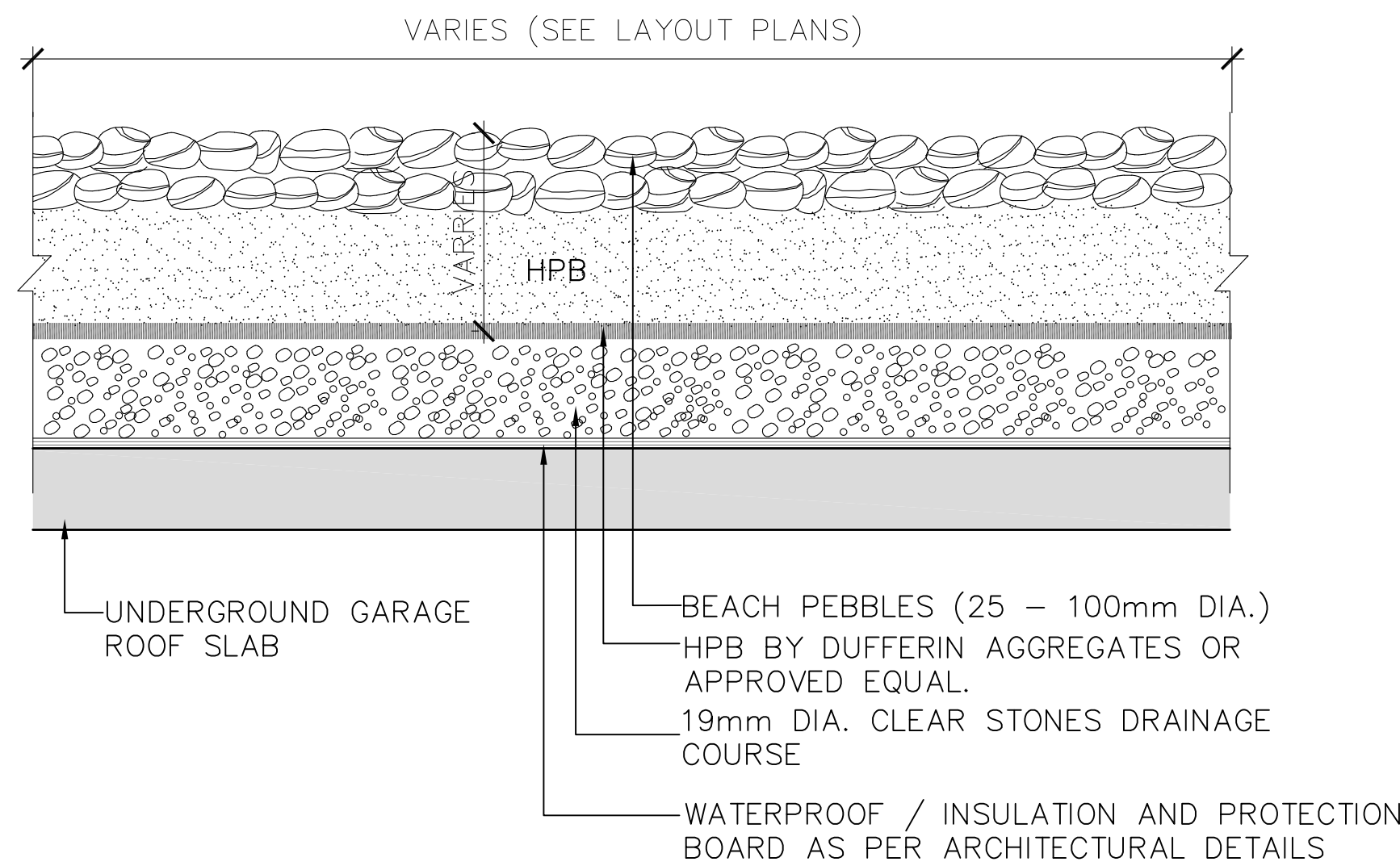
NOTES:  
• COLOURS TO BE SELECTED BY LANDSCAPE ARCHITECT ON SITE.  
• REFER TO L100 FOR PAVING SCHEDULE

## 4 PRECAST CONCRETE UNIT PAVERS

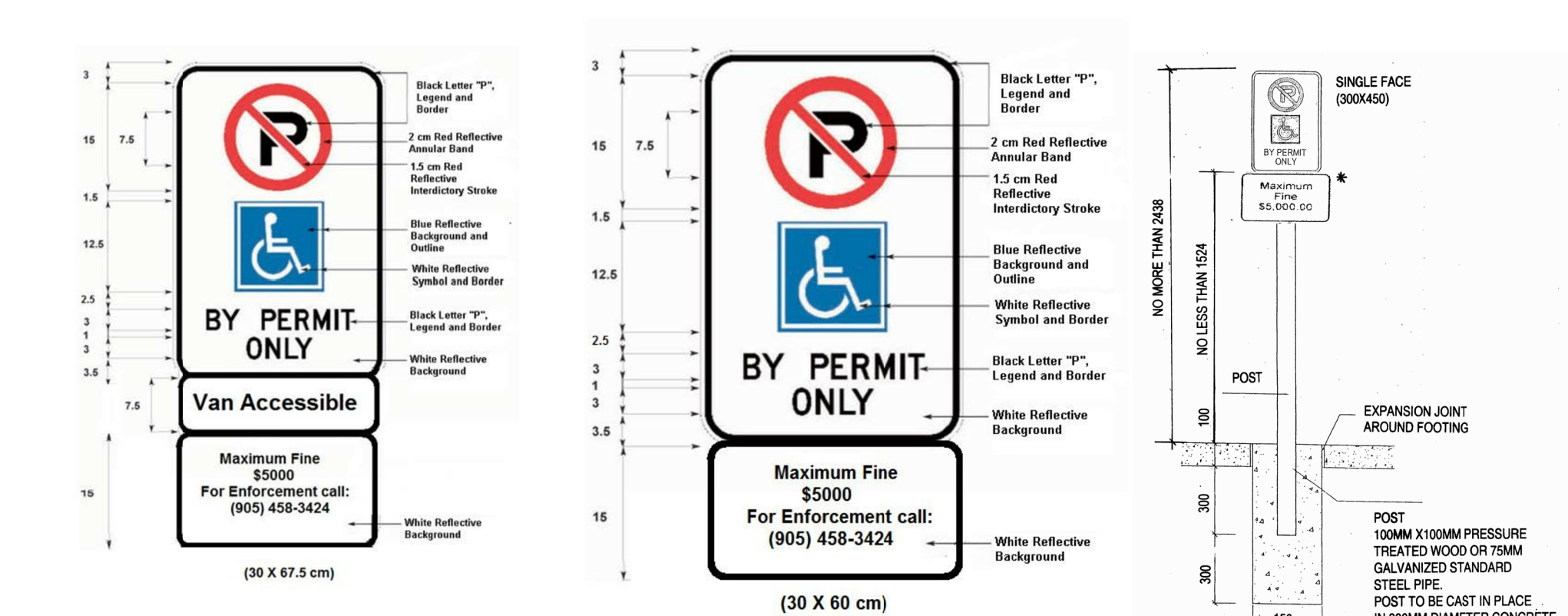


IMPRESSED ASPHALT PAVING BY TRAFFICSCAPE'S PRODUCTS  
CONTACT: DOUG BAIN, PHONE: 416.540.9287, EMAIL: doug.bain@hubs.com

## 5 IMPRESSED XD ASPHALT CROSSWALK



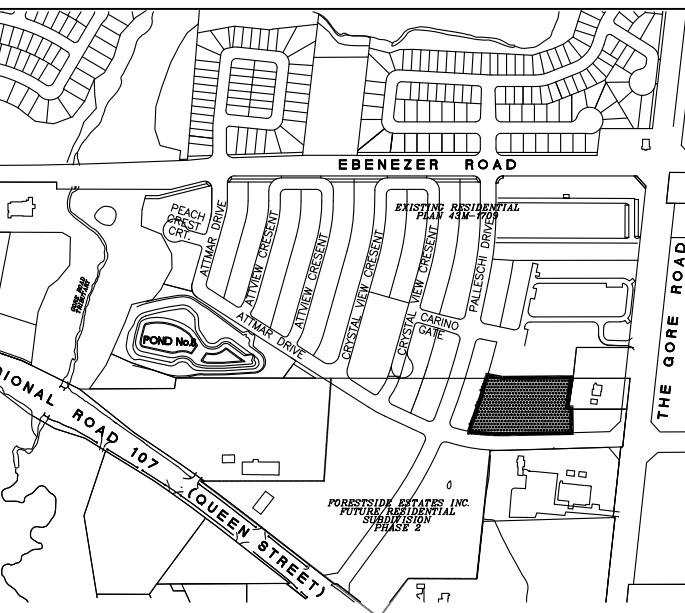
## 7 BEACHSTONE MAINTENANCE STRIP



## 6 ACCESSIBLE PARKING SIGNAGE

## GENERAL NOTES

VERIFY ALL DIMENSIONS.  
DO NOT SCALE DRAWINGS.  
REPORT ANY DISCREPANCIES, DISCOVERED ERRORS, OR OMISSIONS TO THE LANDSCAPE ARCHITECT BEFORE PROCEEDING.  
IT IS ADVISED THAT CONTRACTORS CONTACT THE LANDSCAPE ARCHITECT PRIOR TO CONSTRUCTION TO ENSURE THE USE OF THE LATEST REVISED DRAWINGS.  
DRAWINGS AND SPECIFICATIONS ARE THE PROPERTY OF THE LANDSCAPE ARCHITECT.



SHEET LIST	LANDSCAPE PLAN
L100	LANDSCAPE PLAN
L200	LANDSCAPE DETAILS
L201	LANDSCAPE DETAILS
L202	LANDSCAPE DETAILS
L203	LANDSCAPE DETAILS

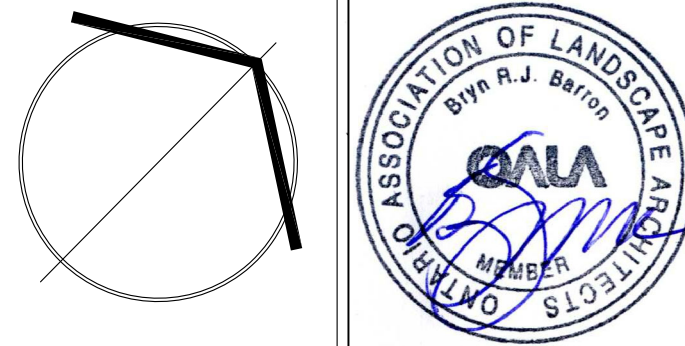
**APPROVED**  
Planning and Development  
Services Department

Manager, Development Services

Date

No.	DATE	REVISION	BY
3	10-01-2019	Issued For SPA SUBMISSION	BB
2	08-02-2019	Issued For Tender	BB
1	04-22-2019	For Submission	BB

It is the responsibility of the Contractor and/or Owner to ensure that the drawings with the latest revisions are used for construction.



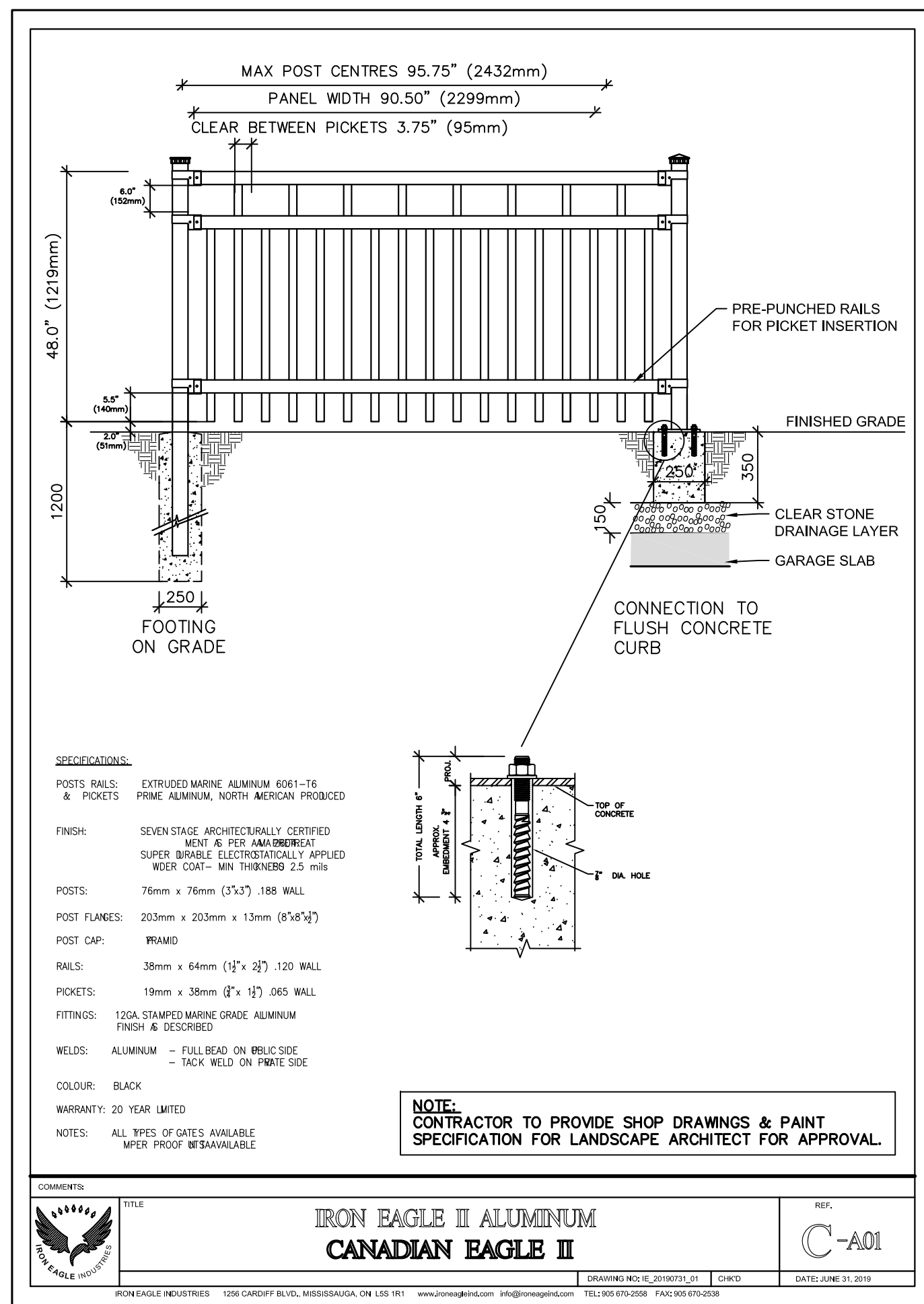
**SBK**  
STRYBOS BARRON KING  
LANDSCAPE ARCHITECTURE

PROJECT:  
PROPOSED STACKED  
TOWNHOMES DEVELOPMENT  
FORESTSIDE ESTATES INC  
65-95 ATTMAR DRIVE

DRAWING TITLE:  
LANDSCAPE DETAILS

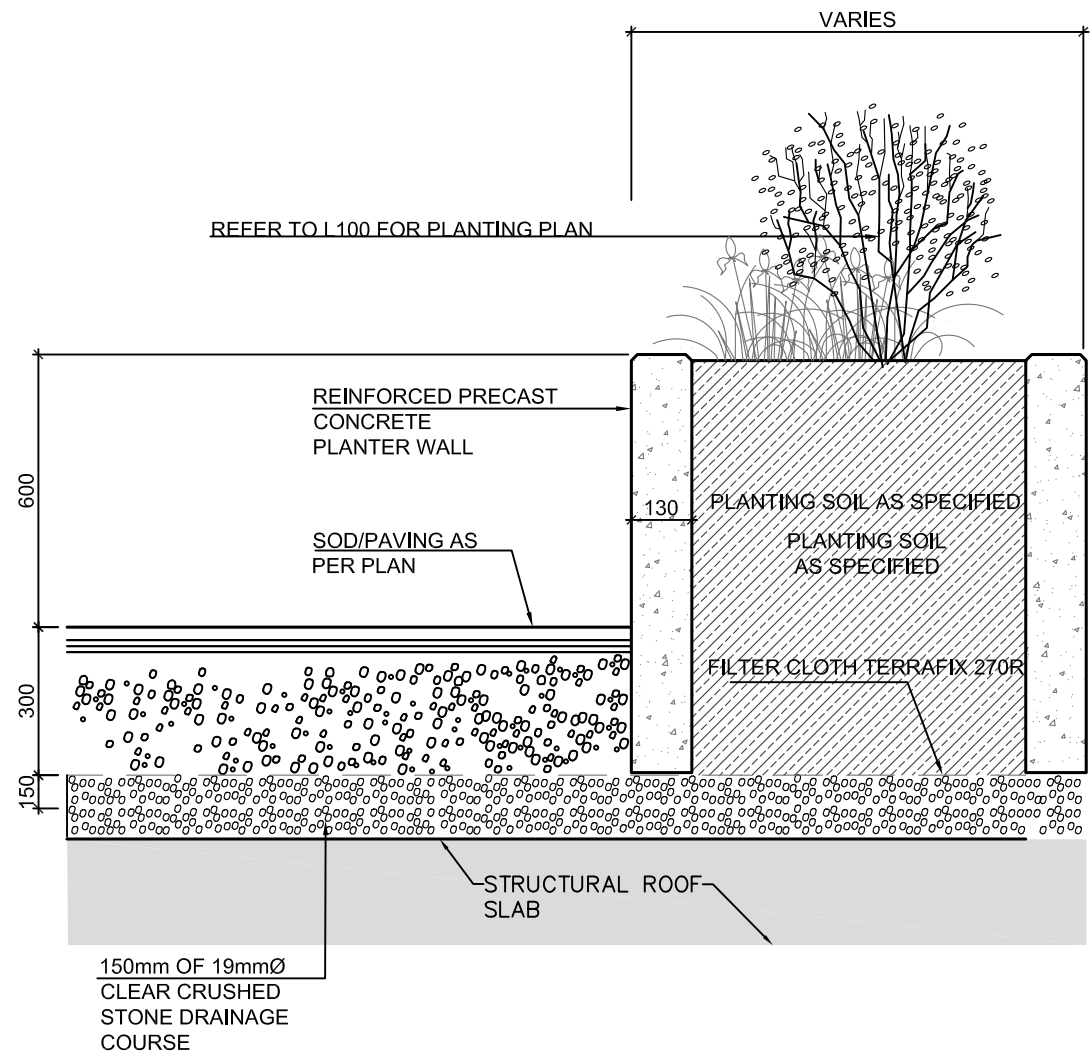
SCALE: AS SHOWN	PROJECT No. 18-5261
DATE: MARCH 2019	DRAWN BY: KG
CHECKED BY: SM/BB	DRAWING No. L200



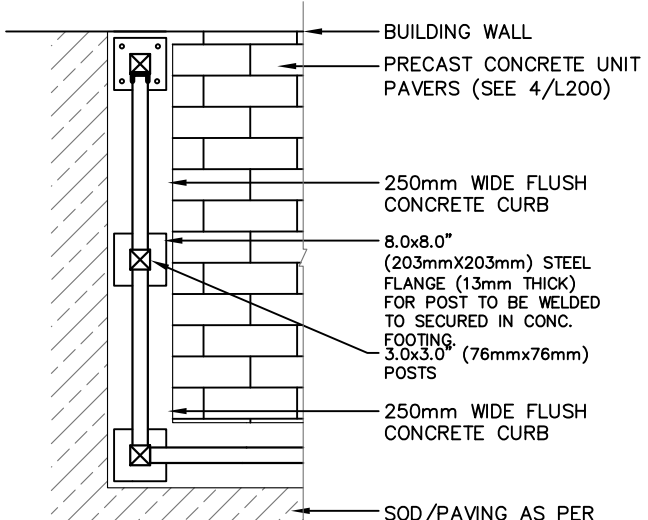


A-ELEVATION

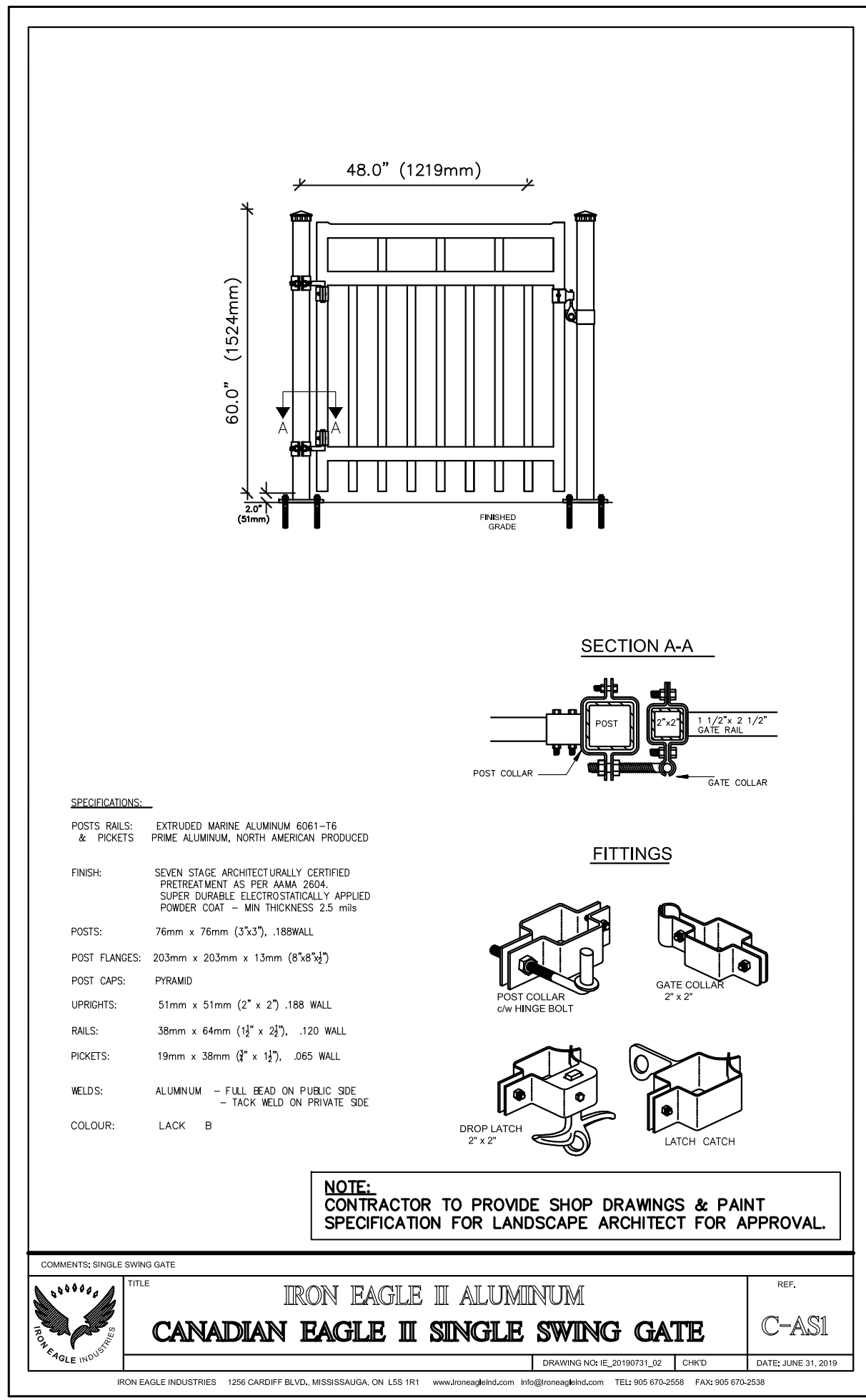
1 1200mm HT DECORATIVE METAL FENCE  
L201



4 900mm HT PRECAST CONCRETE PLANTER  
L201 - ON SLAB

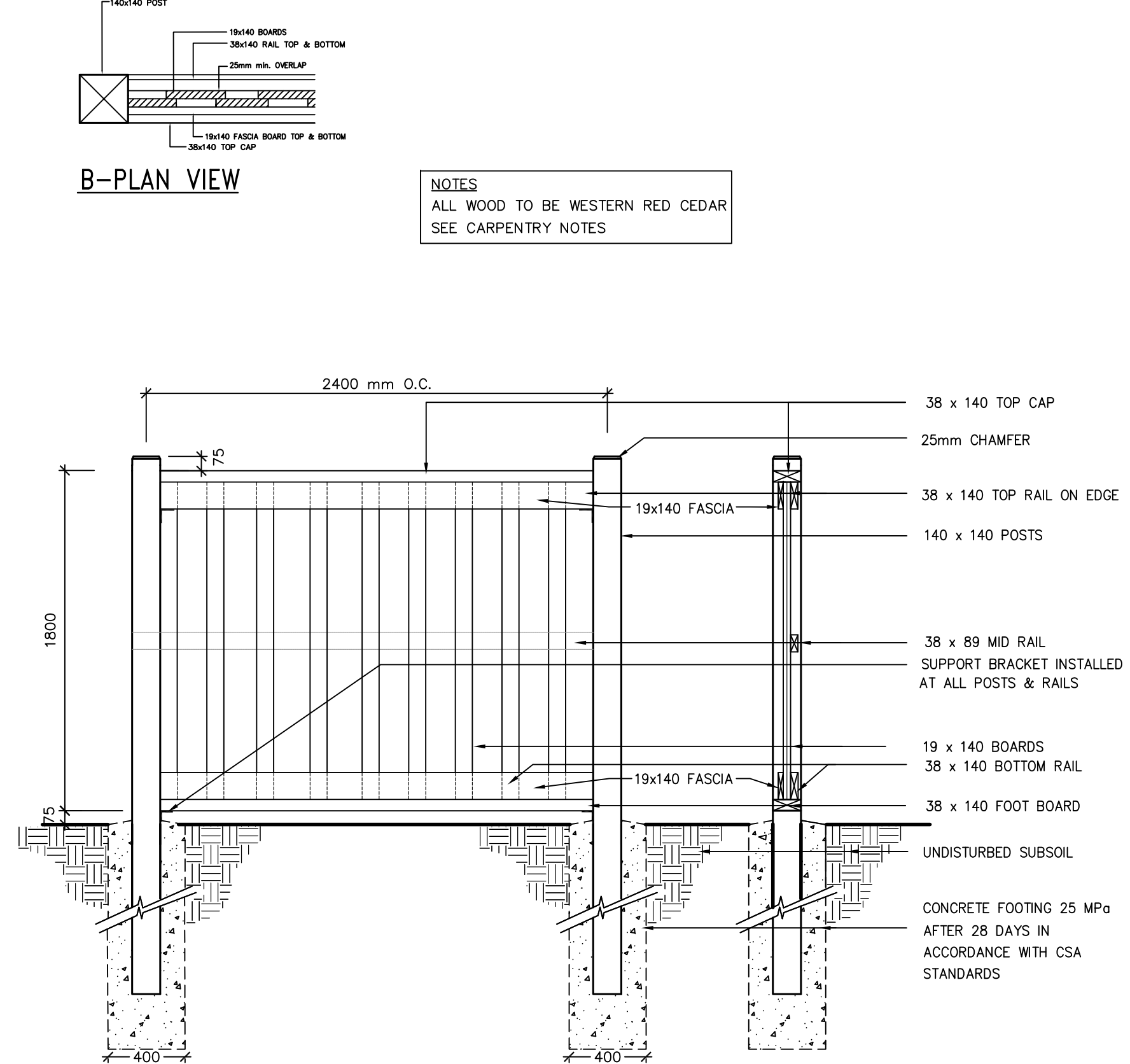


A-PLAN VIEW  
(FOOTING LOCATION ON  
CONCRETE CURB)



A-ELEVATION

2 1200mm HT DECORATIVE METAL GATE  
L201



A-ELEVATION

3 1800mm HT WOOD PRIVACY FENCE  
L201 - ON GRADE

**NOTE:**  
CONTRACTOR TO PROVIDE SHOP DRAWINGS FOR LANDSCAPE ARCHITECT FOR APPROVAL.  
PRECAST CONCRETE PLANTERS TO BE SUPPLIED BY KNEGT AND BERTCHOLD INC. 30 HALE RD. BRAMPTON ON. 905-457-4911 WWW.ALPHAPRECASTS.COM OR APPROVED EQUAL.  
FINISH TO BE LOCAL AGGREGATE GRAY CEMENT WITH SANDBLAST FACE FINISH.  
PRECAST SECTIONS TO BE CONNECTED WITH 2 GALVANIZED CONNECTING PLATED AT EACH JOINT.  
SHOP DRAWINGS TO BE PROVIDED FOR APPROVAL BY LANDSCAPE ARCHITECT.

### Halo Stainless Steel Bicycle Rack

PS-79-S5-101-BD - Halo Stainless Steel Bike Rack  
Our Halo Stainless Steel Bicycle Rack features a 316 stainless tubular steel construction, and is available in Surface or In-Ground mounting options.



TO BE SURFACE MOUNTED  
ON CONCRETE PAD

**HAUSER**  
SITE FURNITURE

sales@hausersite.com  
800-268-7328  
hausersite.com

5 BIKE PARKING  
L201

### Esplanade Bench

PS-840-AL-MW2-MW2-A Esplanade AL

Our 'Esplanade' bench features an all-welded aluminum powdercoated frame, and aluminum slats. Shown here in our 'Powder' powdercoat finish. Available in a variety of sizes and finishes, freestanding or bolt-down.



TO BE SURFACE MOUNTED  
ON CONCRETE PAD

**HAUSER**  
SITE FURNITURE

sales@hausersite.com  
800-268-7328  
hausersite.com

6 BENCH  
L201

### 4 Seater Patio Umbrella Unit

US-54-C205-UM-EX Patio

Our 4 Seater Patio Umbrella Unit features an all-welded aluminum 'Java' slat top, and aluminum 'Saville' bench seats. The unit is fitted with an umbrella holder, and is ideal to provide shade with a complimentary umbrella. Shown here in our 'Powder' metal finish.

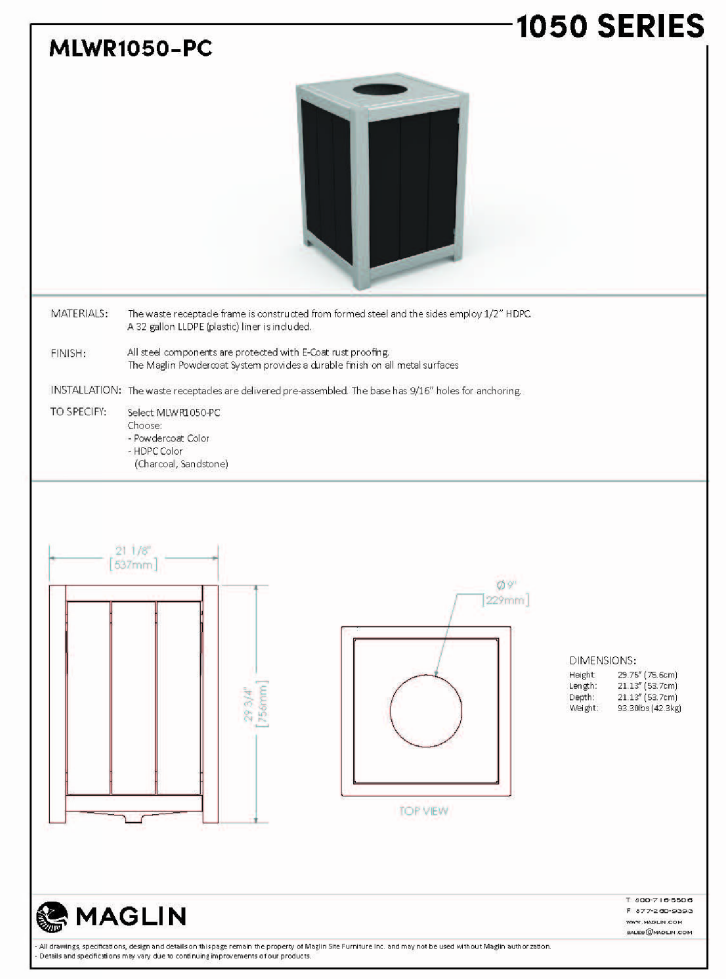


TO BE SURFACE MOUNTED  
ON CONCRETE PAD

**HAUSER**  
SITE FURNITURE

sales@hausersite.com  
800-268-7328  
hausersite.com

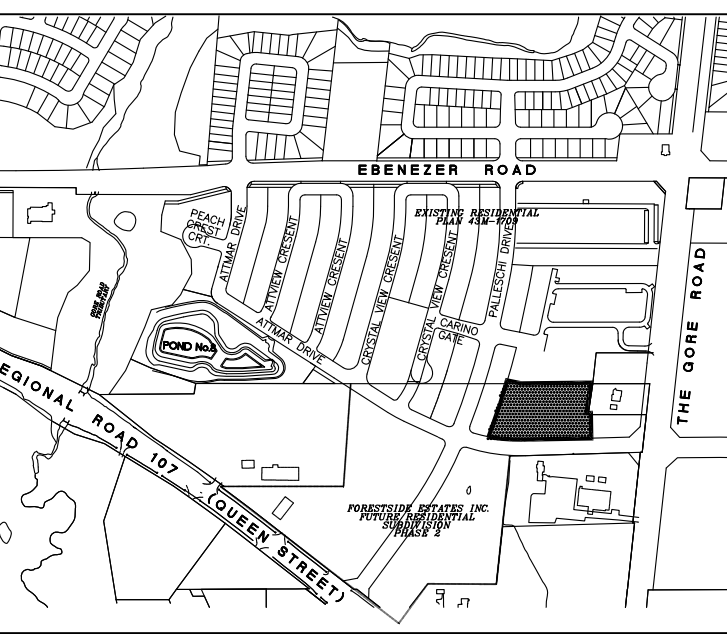
7 4 PERSON PATIO TABLE W/SEATS  
L201



8 TRASH CAN  
L201

### GENERAL NOTES

- VERIFY ALL DIMENSIONS.
- DO NOT SCALE DRAWINGS.
- REPORT ANY DISCREPANCIES, DISCOVERED ERRORS, OR OMISSIONS TO THE LANDSCAPE ARCHITECT BEFORE PROCEEDING.
- IT IS ADVISED THAT CONTRACTORS CONTACT THE LANDSCAPE ARCHITECT PRIOR TO CONSTRUCTION TO ENSURE THE USE OF THE LATEST REVISED DRAWINGS.
- DRAWINGS AND SPECIFICATIONS ARE THE PROPERTY OF THE LANDSCAPE ARCHITECT.



SHEET LIST	
L100	LANDSCAPE PLAN
L200	LANDSCAPE DETAILS
L201	LANDSCAPE DETAILS
L202	LANDSCAPE DETAILS
L203	LANDSCAPE DETAILS

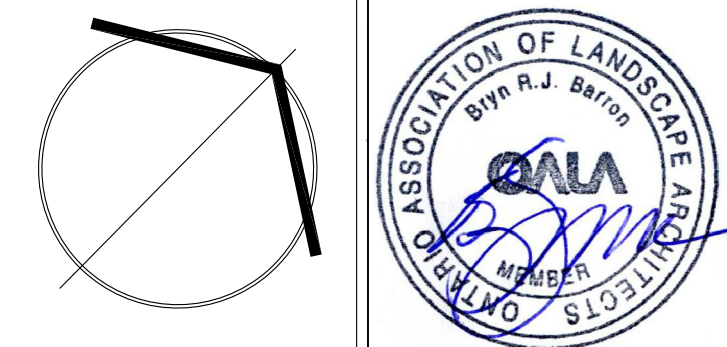
**APPROVED**  
Planning and Development  
Services Department

Manager, Development Services

Date

No.	DATE	REVISION	BY
3	10-01-2019	Issued For SPA SUBMISSION	BB
2	08-02-2019	Issued For Tender	BB
1	04-22-2019	For Submission	BB

It is the responsibility of the Contractor and/or Owner to ensure that the drawings with the latest revisions are used for construction.



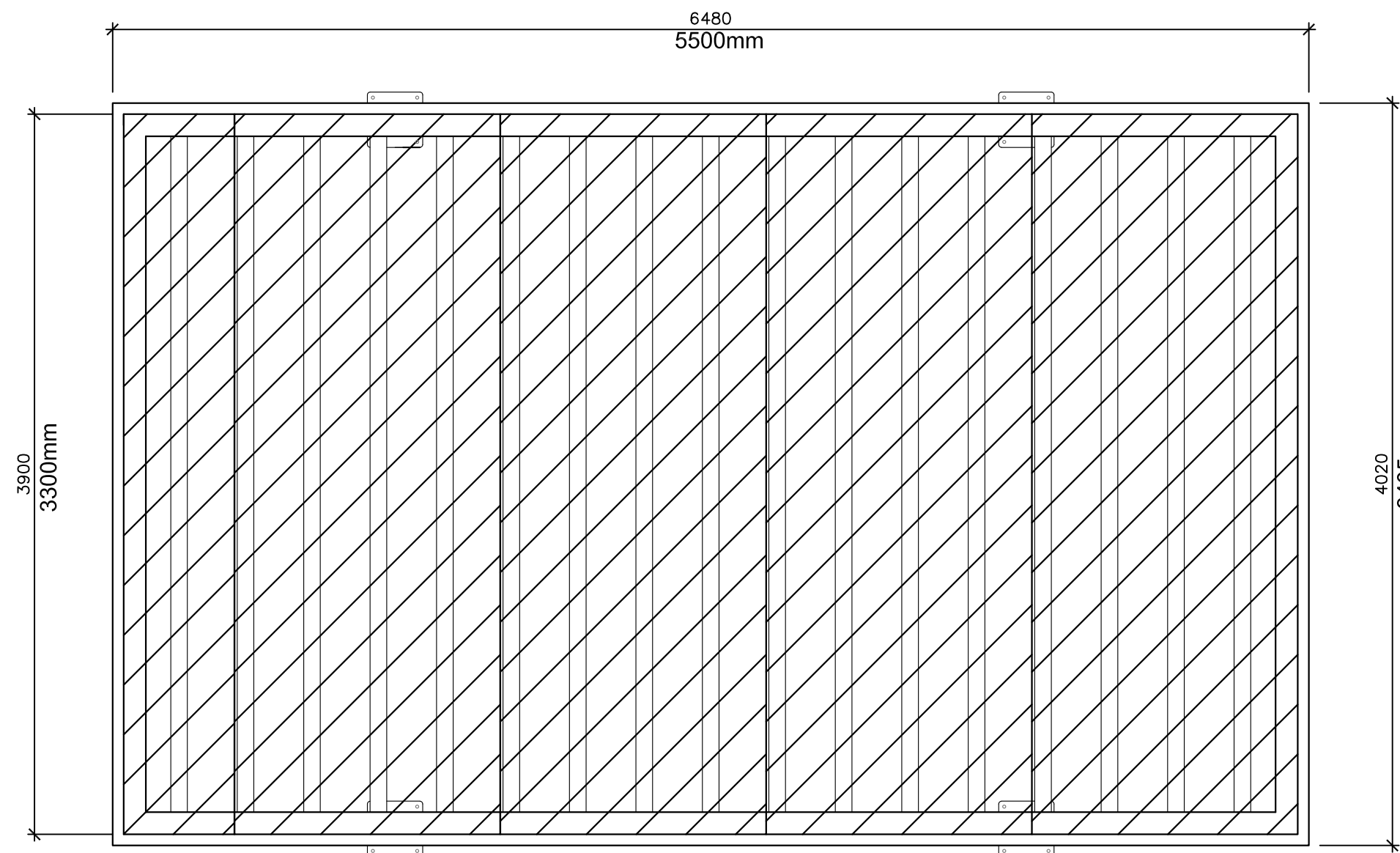
**SBK**  
STRYBOS BARRON KING  
LANDSCAPE ARCHITECTURE

PROJECT:  
**PROPOSED STACKED TOWNHOMES DEVELOPMENT**  
FORESTSIDE ESTATES INC  
65-95 ATTMAR DRIVE

DRAWING TITLE:  
**LANDSCAPE DETAILS**

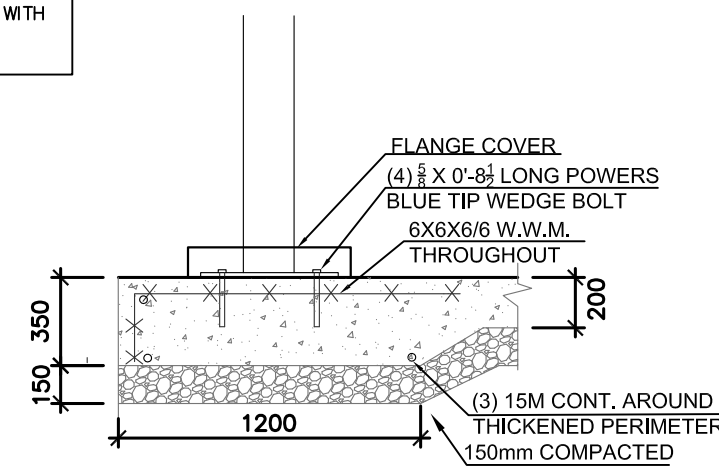
SCALE: AS SHOWN	PROJECT No. 18-5261
DATE: MARCH 2019	DRAWING No. L201
DRAWN BY: KG	
CHECKED BY: SM/BB	



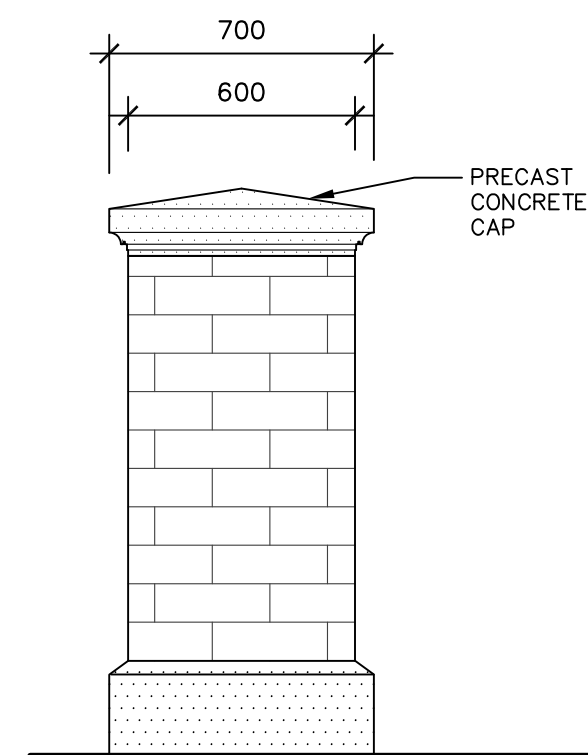


A-PLAN VIEW  
(TWIN WALL 10mm POLYCARBONATE ROOF PANELS W/ 76mm X 76mm RAFTERS)

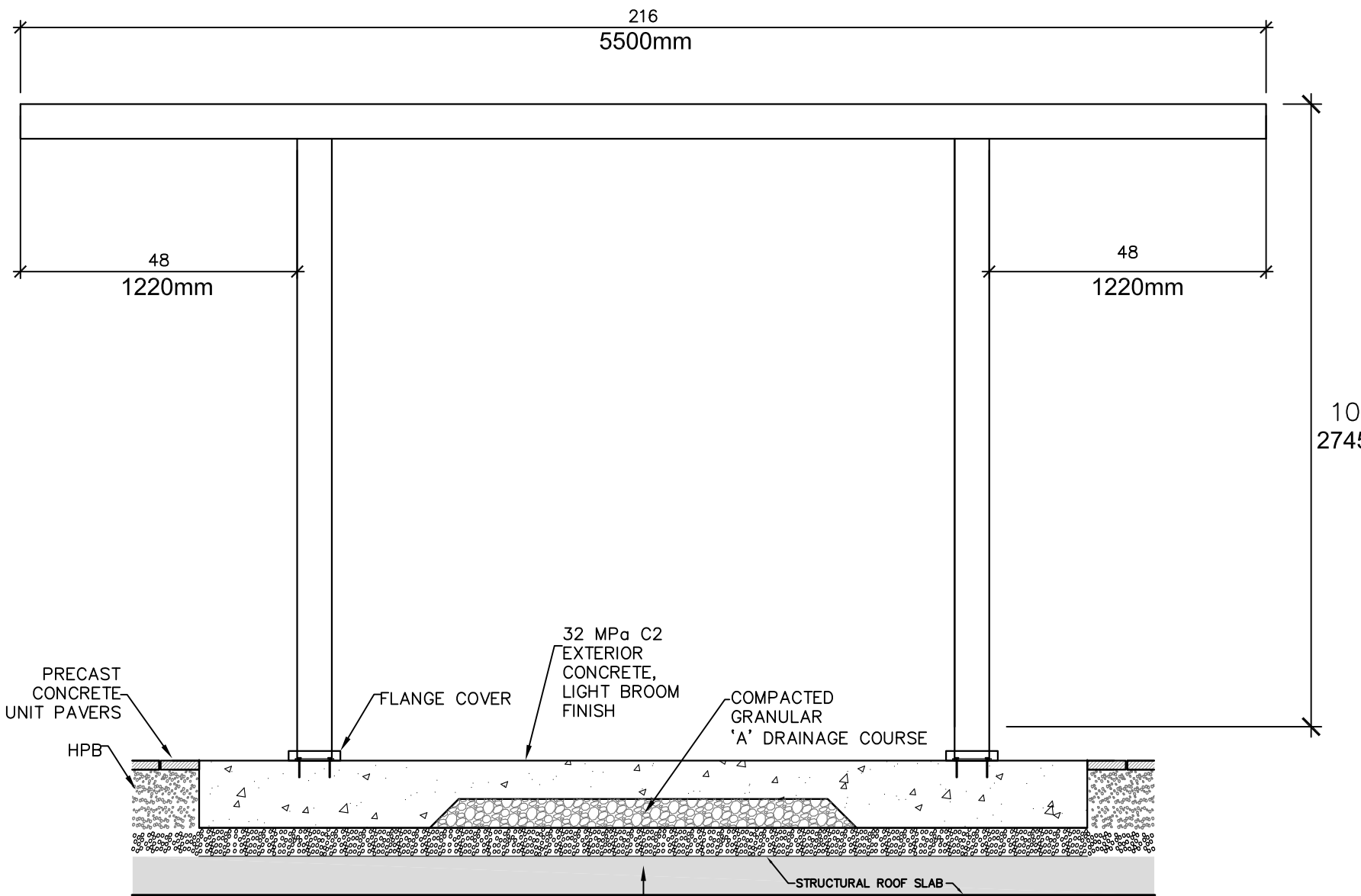
NOTE:  
THIS DETAIL IS SCHEMATIC CONNECTION  
DETAILS TO BE PROVIDED ALONG WITH  
SHOP DRAWINGS CERTIFIED BY A  
STRUCTURAL ENGINEER.



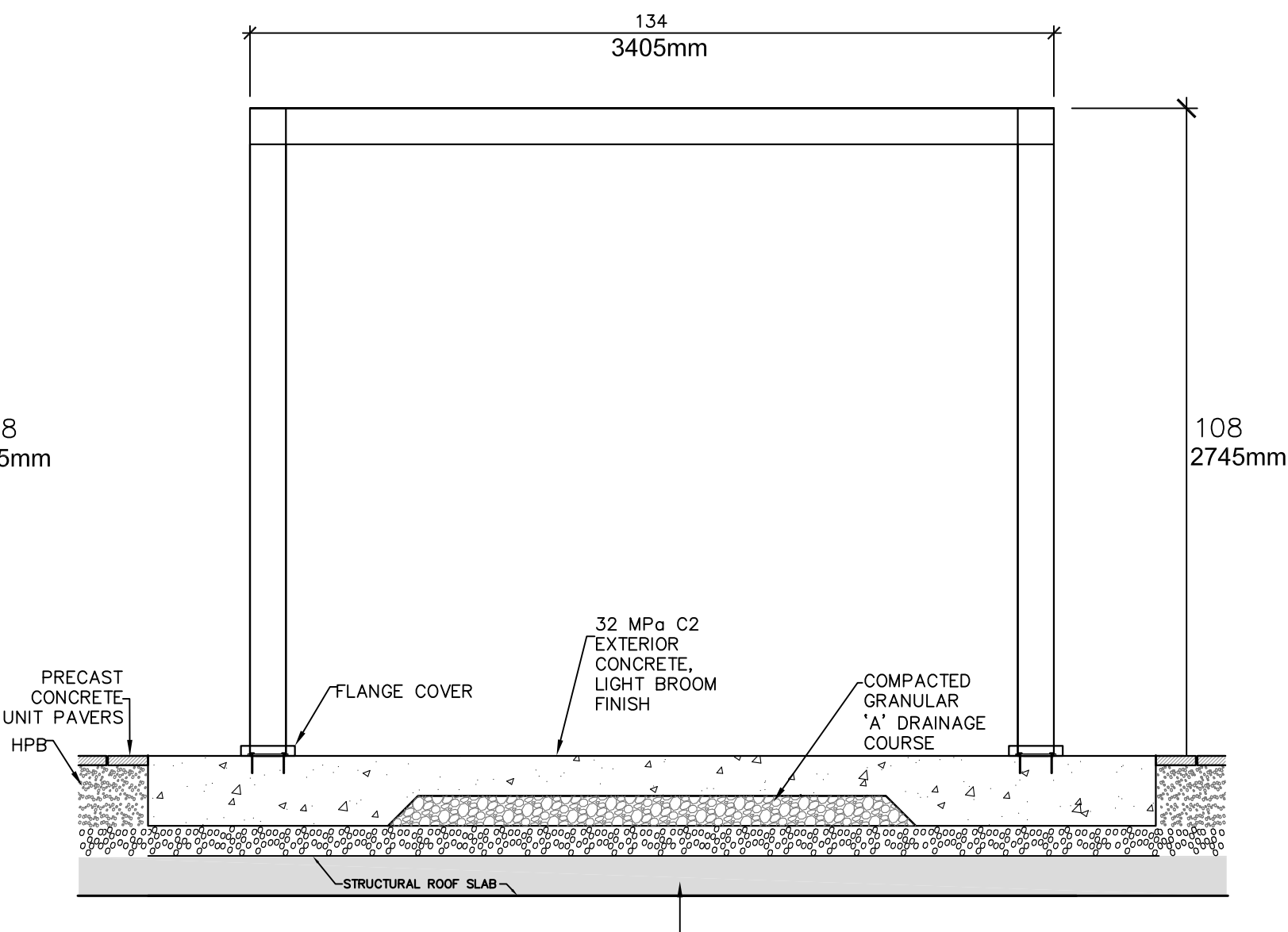
C-SECTION  
(TYPICAL SHADE STRUCTURE POST CONNECTION TO CONCRETE PAD)



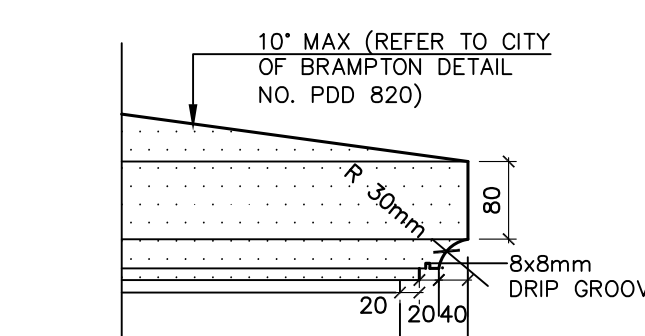
B-ELEVATION  
(PILLAR)



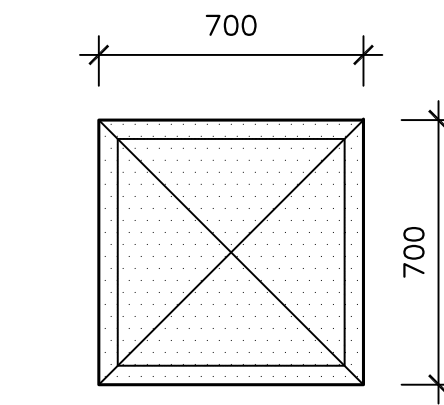
B-SIDE ELEVATION



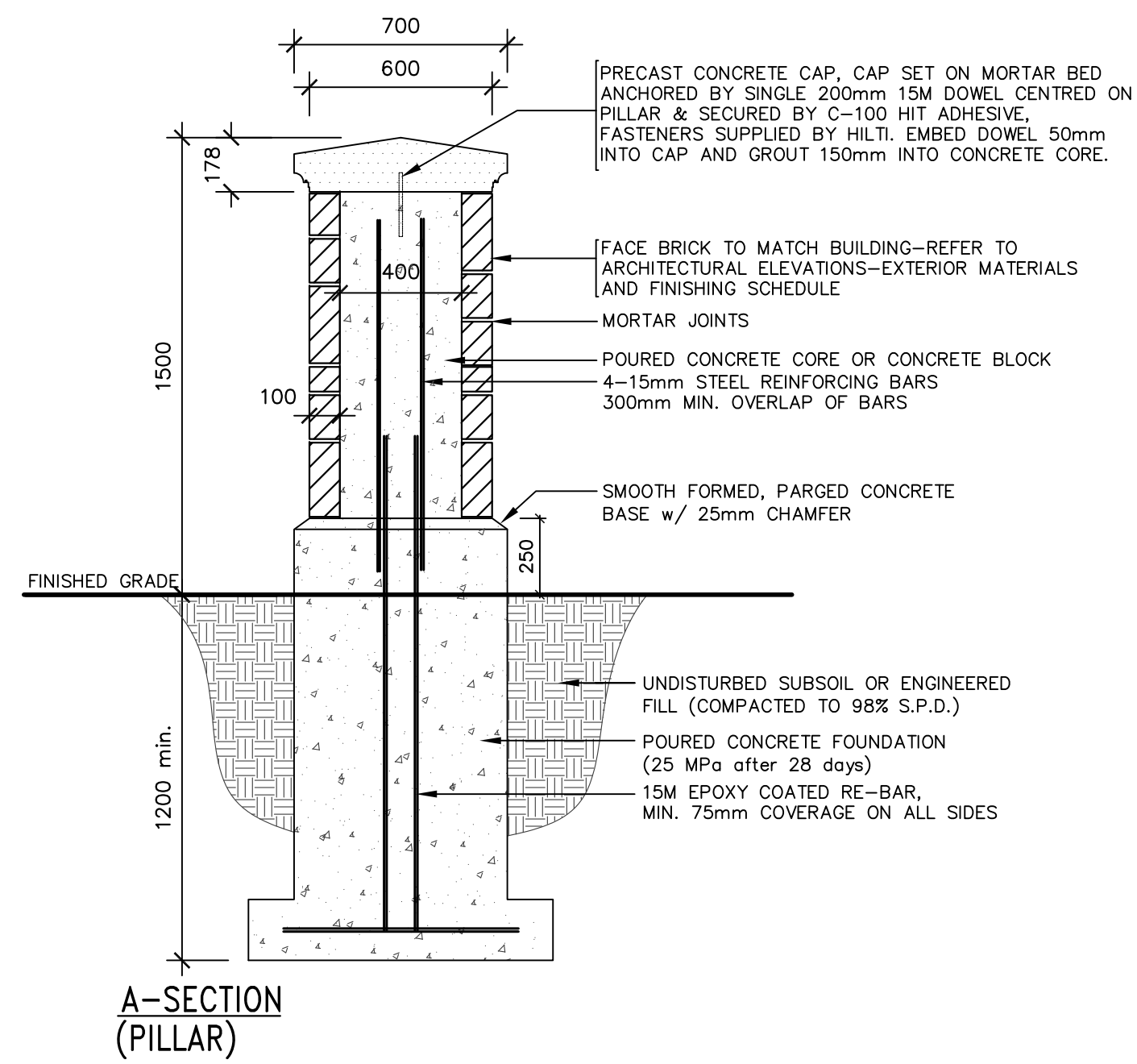
D-FRONT ELEVATION



C-ELEVATION  
(PILLAR CAP)



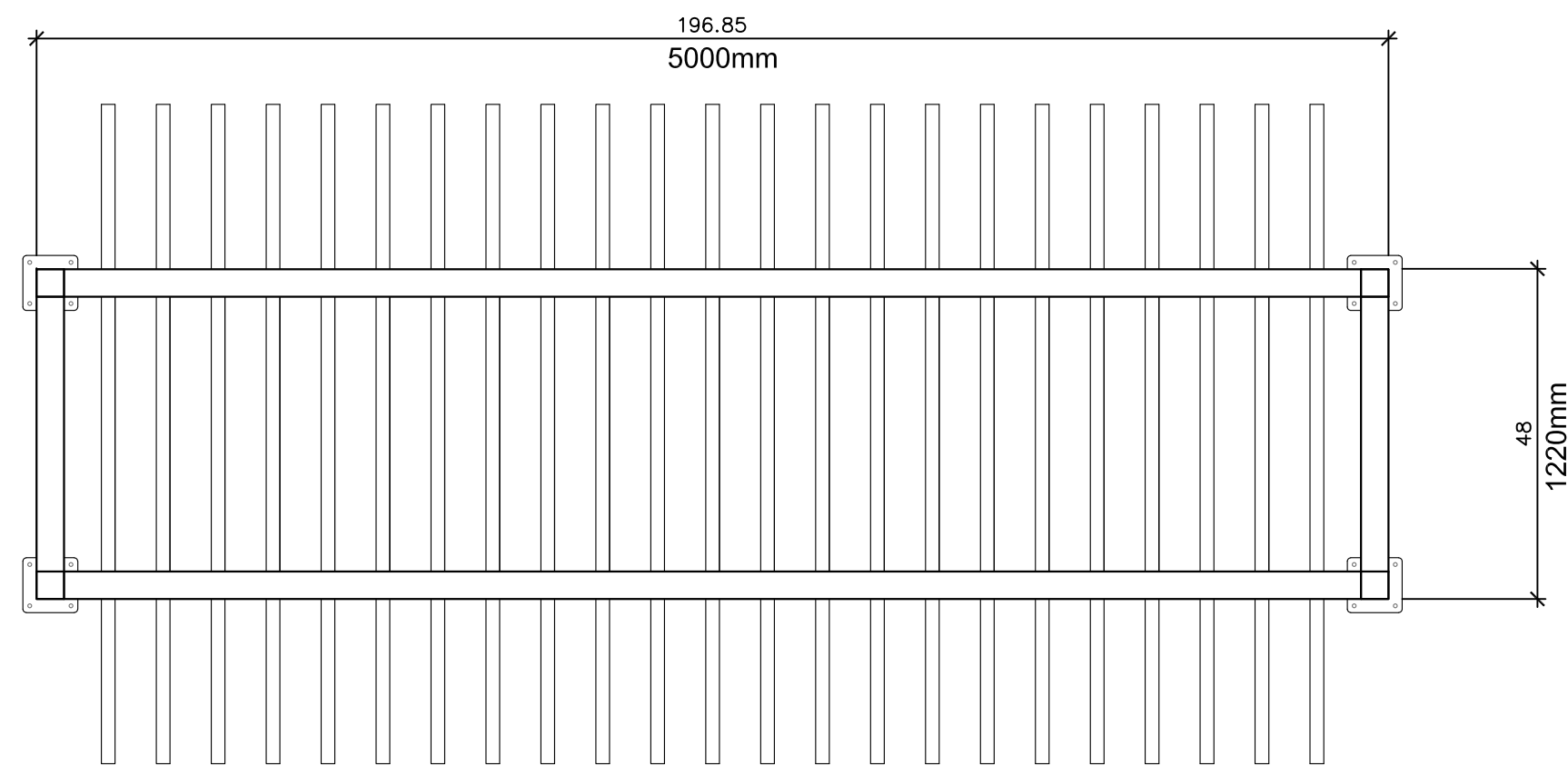
D-PLAN VIEW  
(PILLAR CAP)



A-SECTION  
(PILLAR)

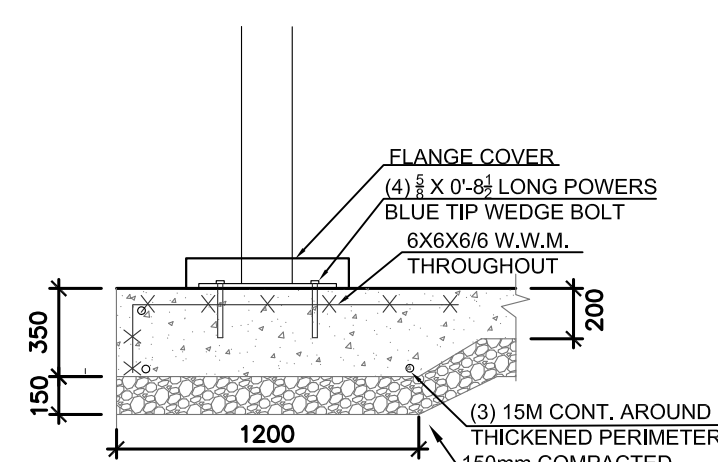
1 SHADE STRUCTURE (STUR DESIGN INC. MODEL CODE: CP-TB-5500-5PC, CUSTOM TOSA BOLD, 2019-07-31)

2 1500mm HT MASONRY PILLAR

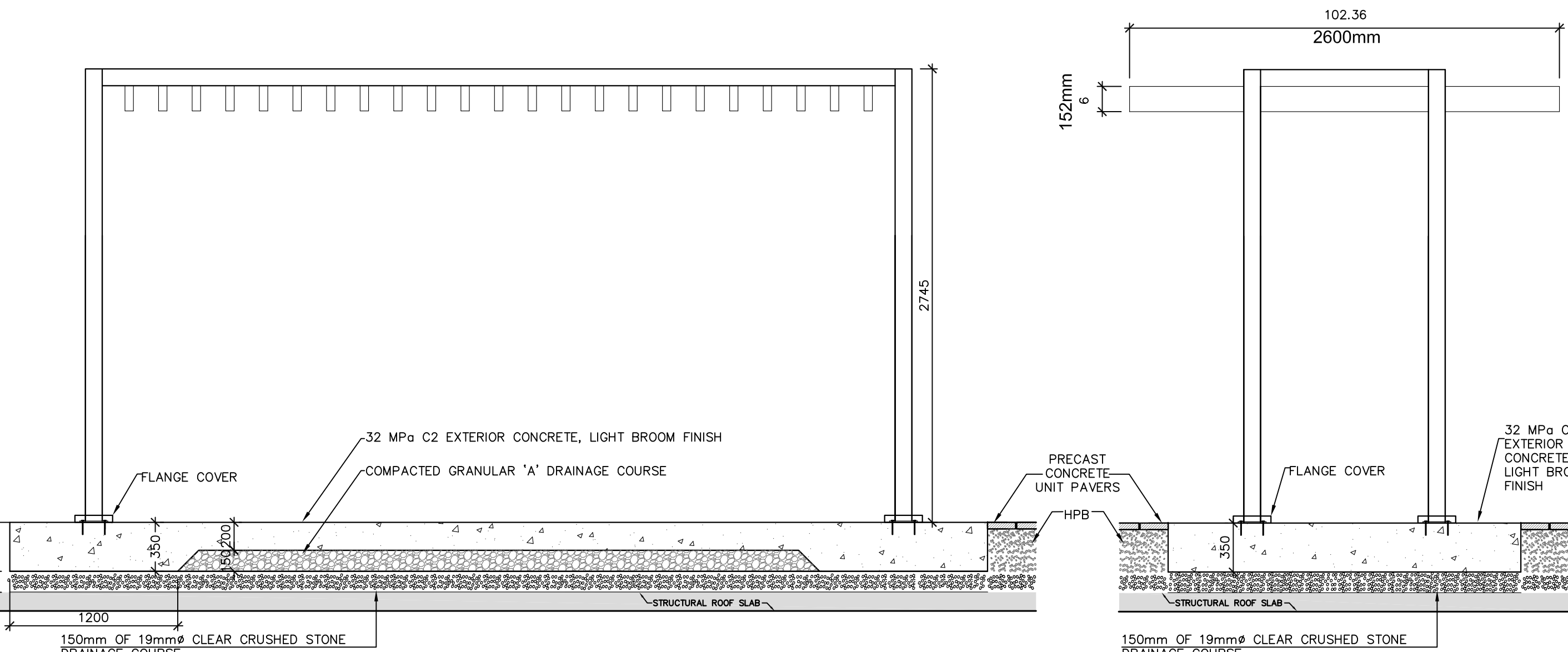


A-PLAN VIEW  
(VERTICALLY ORIENTED 51mm X 152mm ALUMINUM PURLINS SPACED AT ~203mm O/C.)

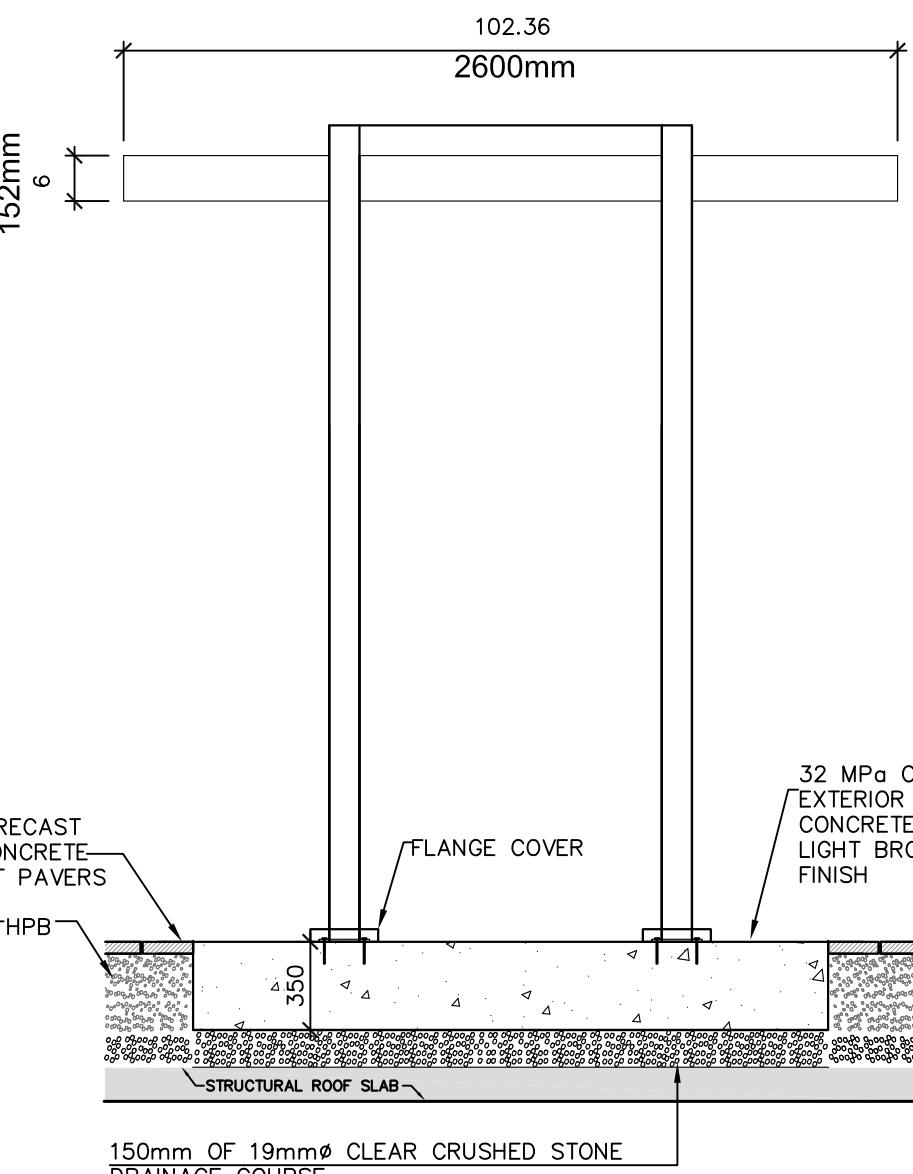
NOTE:  
THIS DETAIL IS SCHEMATIC CONNECTION  
DETAILS TO BE PROVIDED ALONG WITH  
SHOP DRAWINGS CERTIFIED BY A  
STRUCTURAL ENGINEER.



C-SECTION  
(TYPICAL SHADE STRUCTURE POST CONNECTION TO CONCRETE PAD)

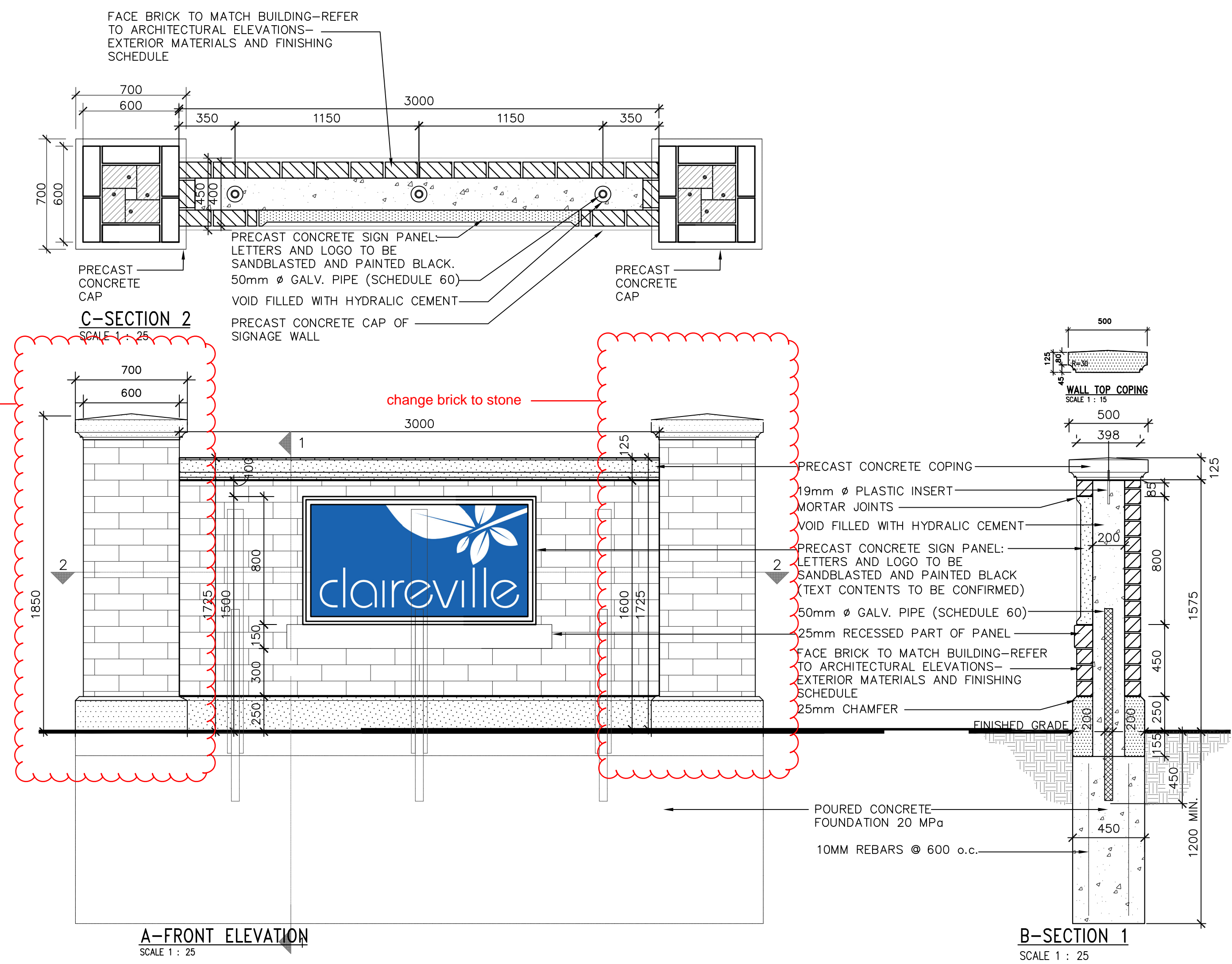


B-SIDE ELEVATION  
(102mm x 102mm COLUMNS AND BEAMS, WITH 203mm x 203mm BASE PLATES)



D-FRONT ELEVATION

3 TRELLIS (STUR DESIGN INC. MODEL CODE: CP-A-5000-UVA26, CUSTOM ARCO, 2019-07-31)



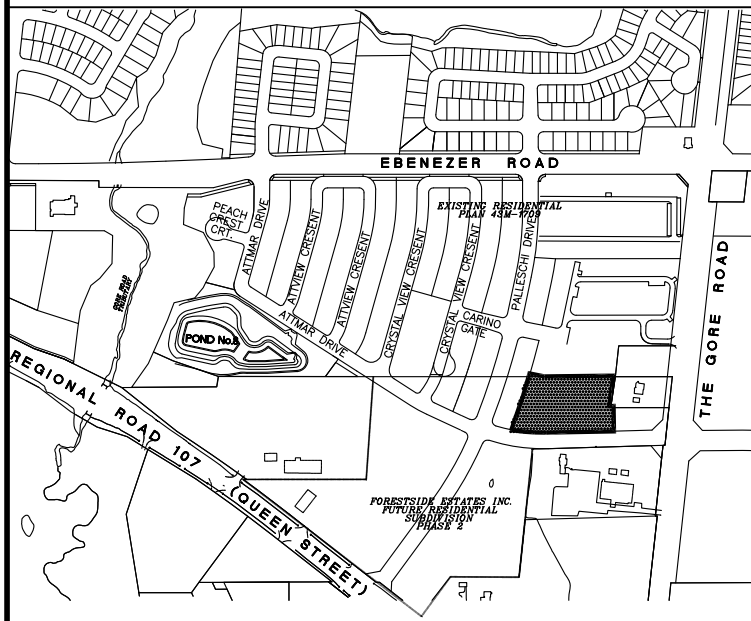
A-FRONT ELEVATION  
SCALE 1:25

B-SECTION 1  
SCALE 1:25

4 ENTRY FEATURE MASONRY WALL

## GENERAL NOTES

- VERIFY ALL DIMENSIONS.
- DO NOT SCALE DRAWINGS.
- REPORT ANY DISCREPANCIES, DISCOVERED ERRORS, OR OMISSIONS TO THE LANDSCAPE ARCHITECT BEFORE PROCEEDING.
- IT IS ADVISED THAT CONTRACTORS CONTACT THE LANDSCAPE ARCHITECT PRIOR TO CONSTRUCTION TO ENSURE THE USE OF THE LATEST REVISED DRAWINGS.
- DRAWINGS AND SPECIFICATIONS ARE THE PROPERTY OF THE LANDSCAPE ARCHITECT.



SHEET LIST	
L100	LANDSCAPE PLAN
L200	LANDSCAPE DETAILS
L201	LANDSCAPE DETAILS
L202	LANDSCAPE DETAILS
L203	LANDSCAPE DETAILS

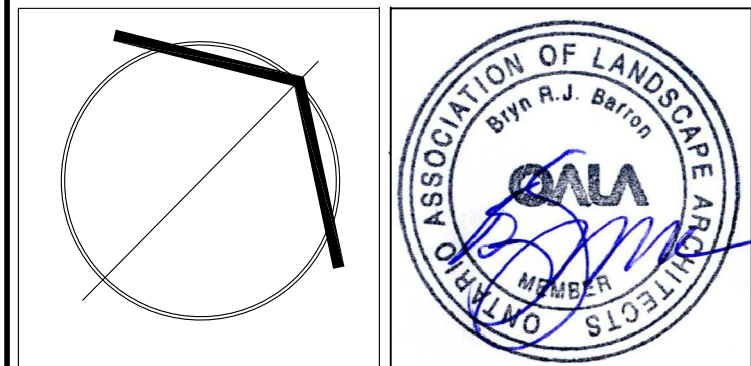
**APPROVED**  
Planning and Development  
Services Department

Manager, Development Services

Date

3	10-01-2019	Issued For SPA SUBMISSION	BB
2	08-02-2019	Issued For Tender	BB
1	04-22-2019	For Submission	BB
No.	DATE	REVISION	BY

It is the responsibility of the Contractor and/or Owner to ensure that the drawings with the latest revisions are used for construction.



**SBK** 5770 HURONTARIO STREET, SUITE 320  
MISSISSAUGA, ONTARIO, L5R 3C5  
T: 416.695.4949 F: 905.712.3101  
WWW.STRYBOS.COM

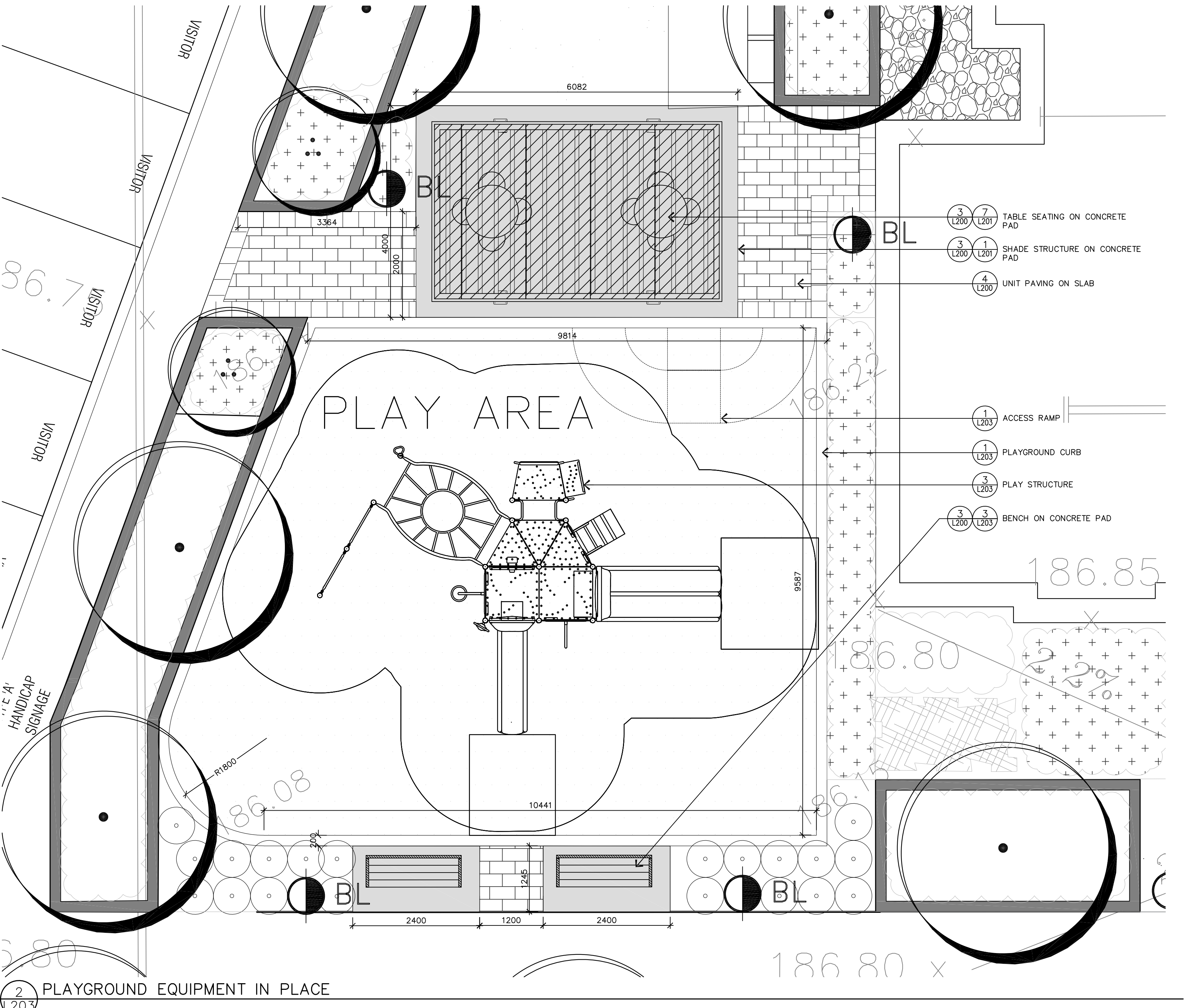
**STRYBOS BARRON KING**  
LANDSCAPE ARCHITECTURE

PROJECT: **PROPOSED STACKED TOWNHOMES DEVELOPMENT**  
FORESTSIDE ESTATES INC  
65-95 ATTARM DRIVE

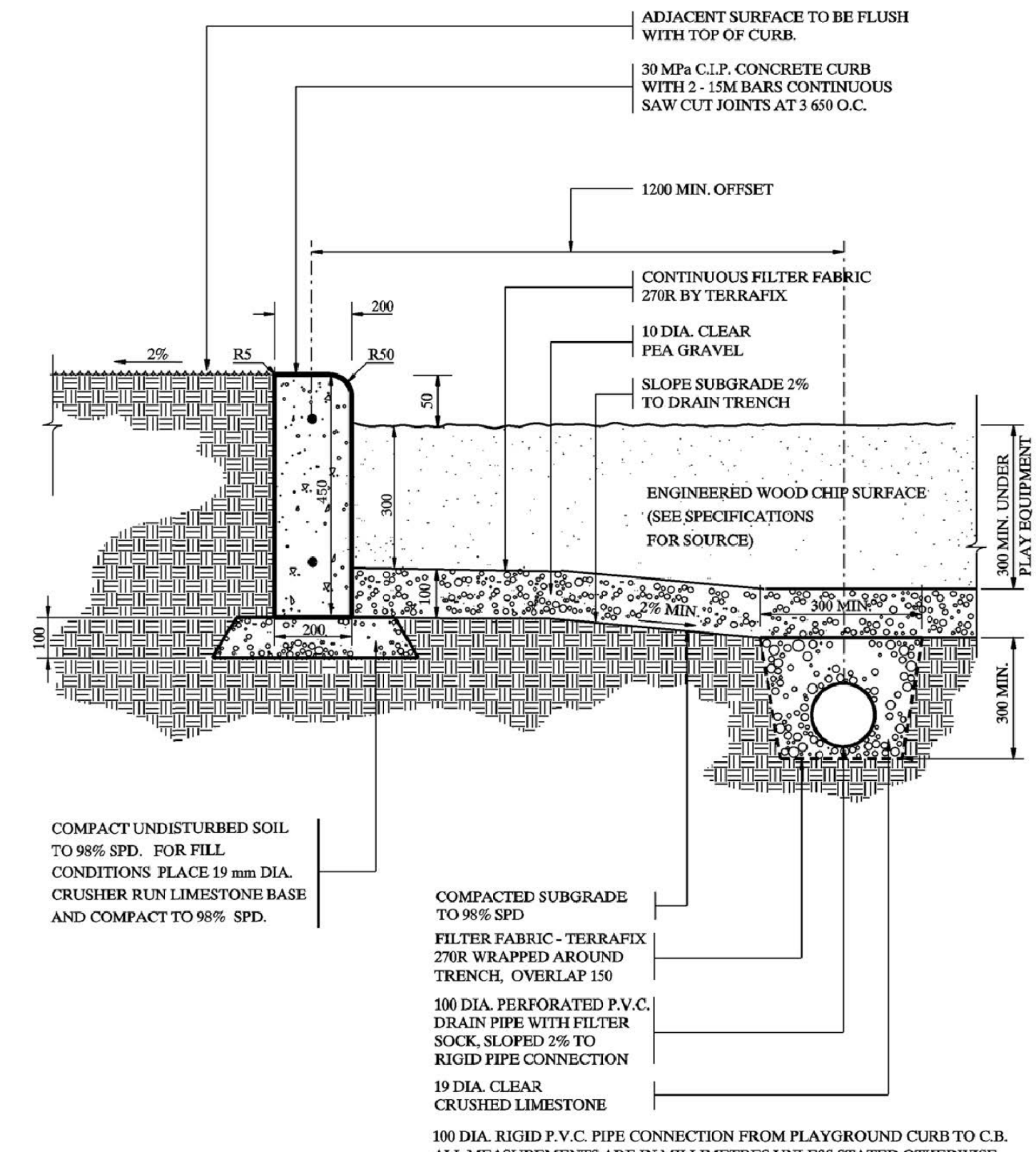
DRAWING TITLE: **LANDSCAPE DETAILS**

SCALE SHOWN	PROJECT No.
MARCH 2019	18-5261
DATE	
KG	DRAWING No.
DRAWN BY:	
SM/BB	
CHECKED BY:	L202

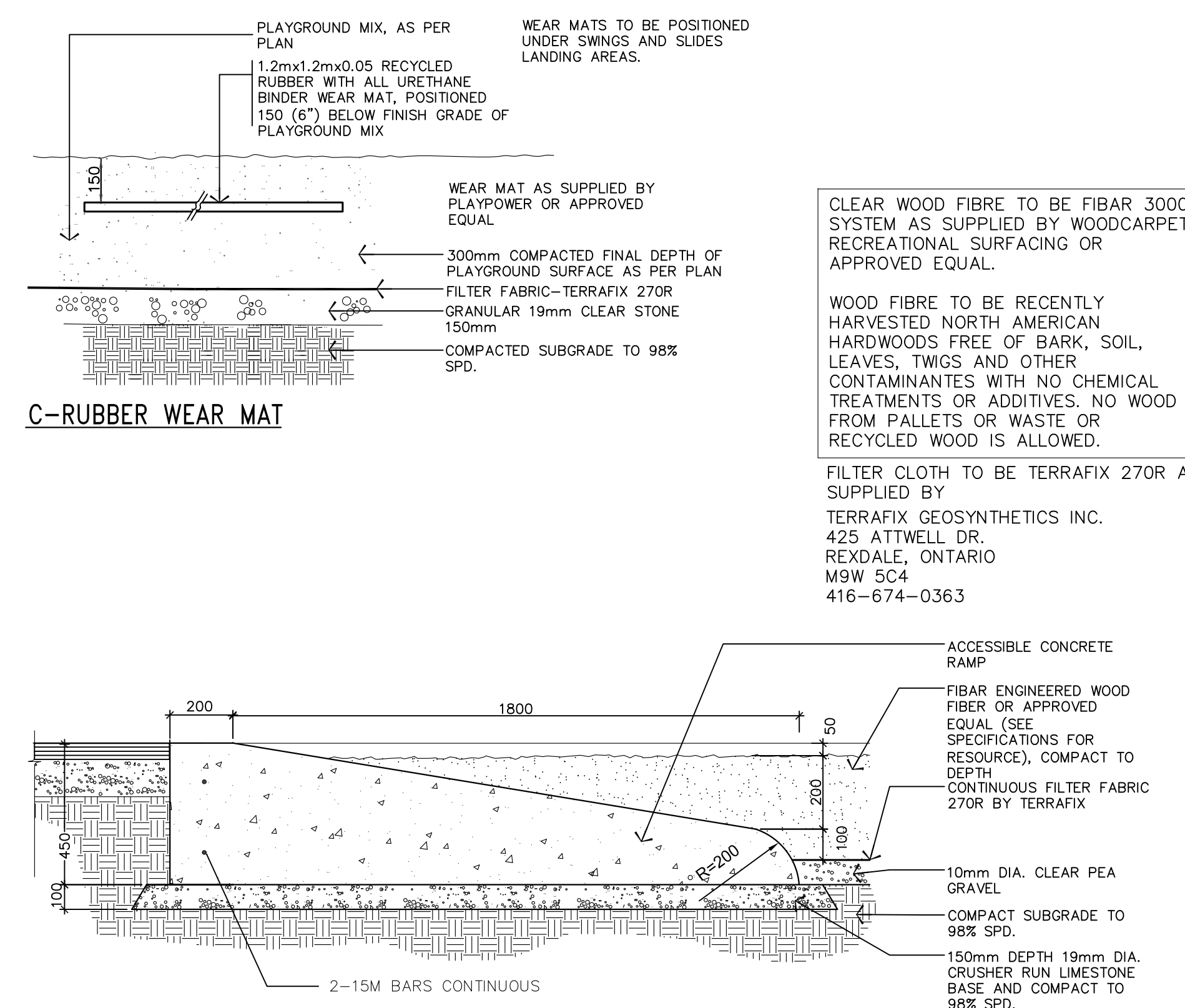




2 PLAYGROUND EQUIPMENT IN PLACE



A-STANDARD CONCRETE CURB  
1 PLAYGROUND CURB & WOOD FIBER SURFACE



B-RAMPED CONCRETE CURB

**General Notes:**

Age Group  
☐ 2-5yrs ☒ 5-12 yrs ☐ 12-17yrs ☐ 18+ yrs

1. The Americans with Disabilities Act (ADA) may require that you make your park and/or playground accessible when viewed in its entirety. Please consult your legal counsel to determine if the ADA applies to you.  
2. For playground equipment to be considered accessible, accessible surfacing must be utilized in applicable areas.  
3. Although a particular playground design may not meet the proposed Access Board Regulations in regard to the appropriate number of ground level events, the actual playground may be in compliance when considering existing play components.  
4. All deck heights are measured from top of ground cover.  
5. All absorbing ground cover is required under and around all play equipment.  
6. The minimum recommended fall zone around the entire playground is shown. This zone is to be free of all tripping or collision hazards (i.e. roots, rocks, border materials, etc.).  
7. All post lengths are identified by text showing the post length. (i.e. 36" represents a 36" high post).  
8. Not all equipment may be appropriate for all children. Supervision is required.

AGE GROUP: 5-12  
ELEVATED PLAY ACTIVITIES - TOTAL: 7  
ELEVATED PLAY ACTIVITIES ACCESSIBLE BY TRANSFER: 7  
ELEVATED PLAY ACTIVITIES ACCESSIBLE BY RAMP: 0  
GROUND LEVEL ACTIVITY TYPE: 4  
GROUND LEVEL QUANTITY: 4

Project:  
PB 19-071309 2019 1ST HALF PROMO  
MONETT, MO  
LTCPS rep:  
Donna Friedman  
PLAYPOWER  
573-915-7740

Ground Space: 25'-6" x 18'-6"  
Protective Area: 37'-0" x 30'-0"

Drawn by: Donna Friedman  
Date: 9/23/2016  
DWG Name: 0000\_42639415093

LTCPS - Farmington  
878 East Highway 60  
Monett, Missouri 65708  
Voice: 1-800-325-8828  
Fax: 417-354-2273

**Playground Layout Compliance:**

☒ ASTM F1487 - Playground Equipment for Public Use.  
☒ CPSC Handbook for Public Playground Safety

☒ This playground design meets the final Access Board Regulations.

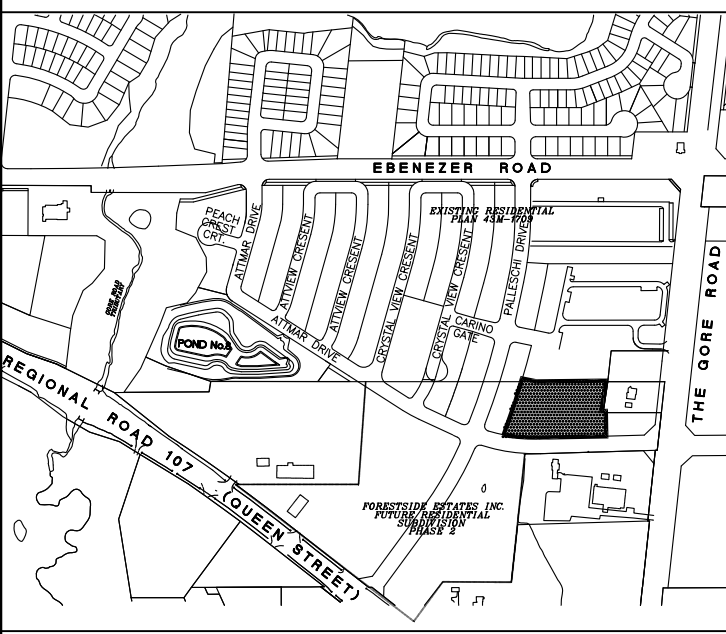
The play components identified in this plan are IPEDAA certified. The use and layout of these components conform to the requirements of ASTM F1487.

LEED points for this structure  
2

3 PLAYGROUND EQUIPMENT ENLARGEMENT

**GENERAL NOTES**

- VERIFY ALL DIMENSIONS.
- DO NOT SCALE DRAWINGS.
- REPORT ANY DISCREPANCIES, DISCOVERED ERRORS, OR OMISSIONS TO THE LANDSCAPE ARCHITECT BEFORE PROCEEDING.
- IT IS ADVISED THAT CONTRACTORS CONTACT THE LANDSCAPE ARCHITECT PRIOR TO CONSTRUCTION TO ENSURE THE USE OF THE LATEST REVISED DRAWINGS.
- DRAWINGS AND SPECIFICATIONS ARE THE PROPERTY OF THE LANDSCAPE ARCHITECT.



SHEET LIST	
L100	LANDSCAPE PLAN
L200	LANDSCAPE DETAILS
L201	LANDSCAPE DETAILS
L202	LANDSCAPE DETAILS
L203	LANDSCAPE DETAILS

**APPROVED**

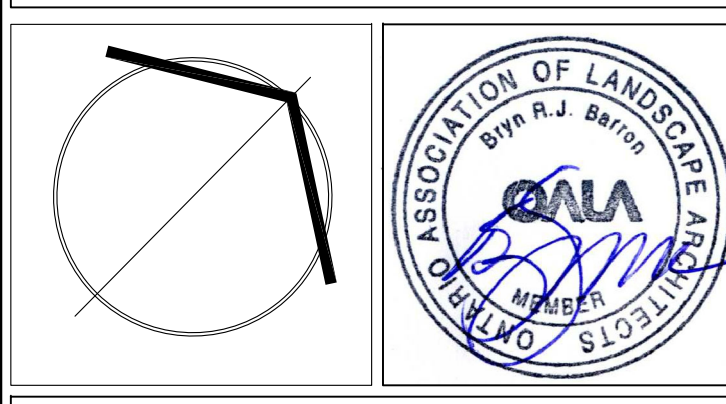
Planning and Development  
Services Department

Manager, Development Services

Date

3	10-01-2019	Issued For SPA SUBMISSION	BB
2	08-02-2019	Issued For Tender	BB
1	04-22-2019	For Submission	BB
No.	DATE	REVISION	BY

It is the responsibility of the Contractor and/or Owner to ensure that the drawings with the latest revisions are used for construction.



**SBK**

5770 HURONTARIO STREET, SUITE 320  
MISSISSAUGA, ONTARIO, L5R 3G5  
T: 416.695.4949 F: 905.712.3101  
WWW.STRYBOS.COM

**STRYBOS BARRON KING**  
LANDSCAPE ARCHITECTURE

PROJECT:  
**PROPOSED STACKED TOWNHOMES DEVELOPMENT**  
FORESTSIDE ESTATES INC  
65-95 ATTIMAR DRIVE

DRAWING TITLE	LANDSCAPE DETAILS
SCALE: MARCH 2019	PROJECT No. 18-5261
DATE: AS PER L100	DRAWING No. L203
DRAWN BY: KG	
CHECKED BY: SM/BB	