



FROM PLAN DATED:

BUILDER: ROYAL PINE HOMES

SITE: CENTREFIELD WEST GORMLEY

MODEL: 2007

ELEVATION: A,B

LOT:

CITY: RICHMAND HILL

SALESMAN: MARIO DICIANO

DESIGNER: AJ

REVISION:

NOTES:

REFER TO THE **NORDIC INSTALLATION** GUIDE FOR PROPER STORAGE AND INSTALLATION.

**SQUASH BLOCKS** OF 2x4, 2x6, 2x8 #2 S.P.F REQ'D UNDER INTERIOR UNIFORM LOAD BEARING WALLS. **MULTIPLE SQUASH BLOCKS** REQ'D UNDER CONCENTRATED LOADS. SEE FIGURE 1. **CANTILEVERED JOISTS** INCLUDING **CANT' OVER BRICK** REQ. I-JOIST BLOCKING ALONG BEARING AND RIMBOARD CLOSURE AT ENDS. SEE FIGURES 4 & 5 FOR REINFORCEMENT REQUIREMENTS. FOR **HOLES** INCLUDING **DUCT CHASE** AND **FIELD CUT OPENINGS** SEE FIGURE 7, TABLES 1 & 2. **CERAMIC TILE** APPLICATION AS PER O.B.C 9.30.6.

LOADING:

DESIGN LOADS: L/480.000

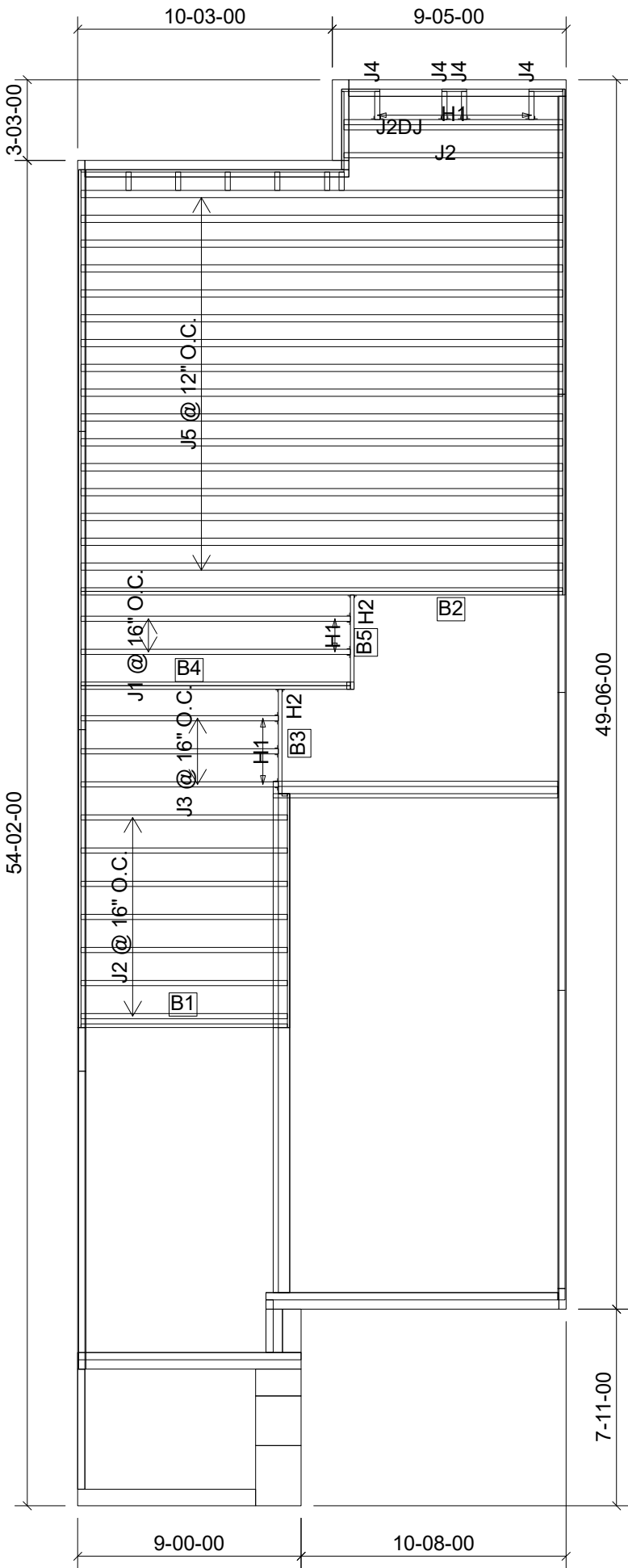
LIVE LOAD: 40.0 lb/ft²

DEAD LOAD: 20.0 lb/ft ²

SUBFLOOR: 3/4" GLUED AND NAILED

DATE: 2020-07-27

1st FLOOR



Products				
PlotID	Length	Product	Plies	Net Qty
J1	12-00-00	11 7/8" NI-40x	1	2
J2	10-00-00	11 7/8" NI-40x	1	8
J2DJ	10-00-00	11 7/8" NI-40x	2	2
J3	8-00-00	11 7/8" NI-40x	1	3
J4	2-00-00	11 7/8" NI-40x	1	4
J5	20-00-00	11 7/8" NI-80	1	16
B2	20-00-00	1-3/4" x 11-7/8" VERSA-LAM® 2.0 3100 SP	2	2
B4	12-00-00	1-3/4" x 11-7/8" VERSA-LAM® 2.0 3100 SP	2	2
B1	10-00-00	1-3/4" x 11-7/8" VERSA-LAM® 2.0 3100 SP	1	1
B3	6-00-00	1-3/4" x 11-7/8" VERSA-LAM® 2.0 3100 SP	1	1
B5	4-00-00	1-3/4" x 11-7/8" VERSA-LAM® 2.0 3100 SP	1	1

Connector Summary		
Qty	Manuf	Product
5	H1	IUS2.56/11.88
4	H1	IUS2.56/11.88
2	H2	HUS1.81/10



FROM PLAN DATED:

BUILDER: ROYAL PINE HOMES

SITE: CENTREFIELD WEST GORMLEY

MODEL: 2007

ELEVATION: A,B

LOT:

CITY: RICHMAND HILL

SALESMAN: MARIO DICIANO

DESIGNER: AJ

REVISION:

NOTES:

REFER TO THE NORDIC **INSTALLATION GUIDE** FOR PROPER STORAGE AND INSTALLATION. **SQUASH BLOCKS** OF 2x4, 2x6, 2x8 #2 S.P.F. REQ'D UNDER INTERIOR UNIFORM LOAD BEARING WALLS. **MULTIPLE SQUASH BLOCKS** REQ'D UNDER CONCENTRATED LOADS. SEE FIGURE 1. **CANTILEVERED JOISTS** INCLUDING **CANT' OVER BRICK** REQ. I-JOIST BLOCKING ALONG BEARING AND RIMBOARD CLOSURE AT ENDS. SEE FIGURE 7 TABLES 4 & 5 FOR REINFORCEMENT REQUIREMENTS. FOR **HOLES** INCLUDING **DUCT CHASE** AND **FIELD CUT OPENINGS** SEE FIGURE 7 TABLES 1 & 2 OF THE INSTALLATION GUIDE. **CERAMIC TILE** APPLICATION AS PER O.B.C. 9.30.6

LOADING:

DESIGN LOADS: L/480.000

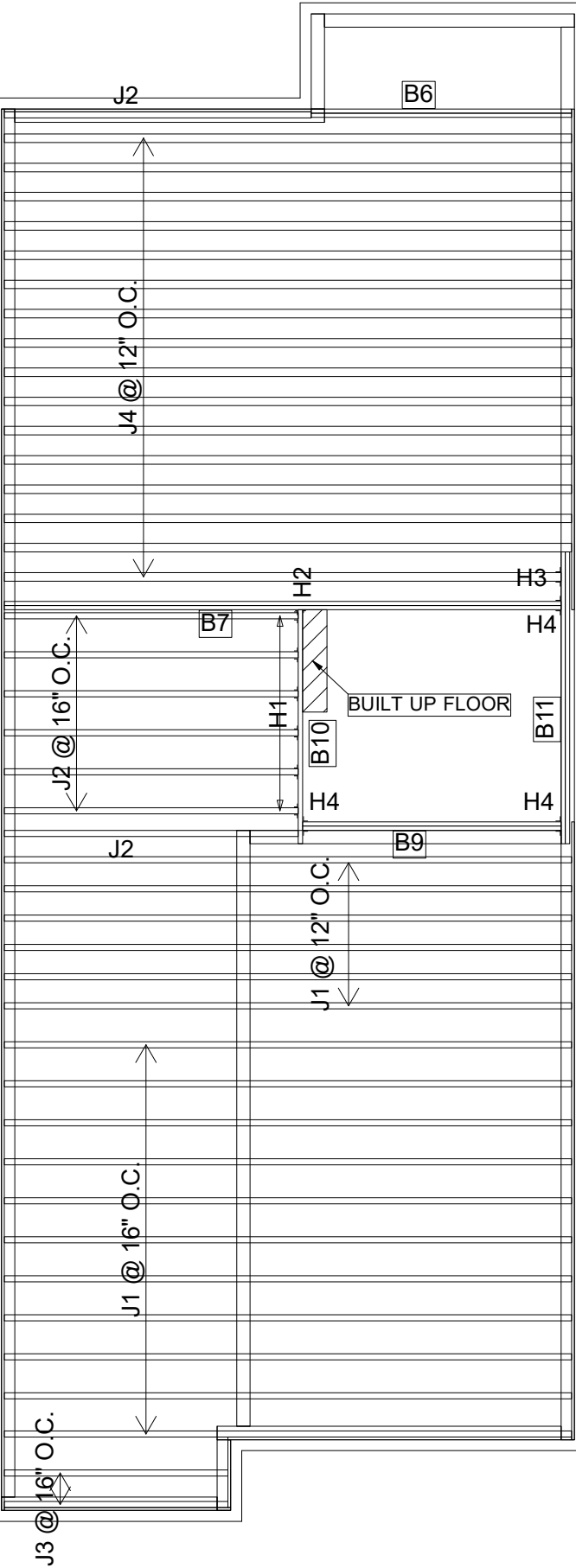
LIVE LOAD: 40.0 lb/ft²

DEAD LOAD: 20.0 lb/ft²

SUBFLOOR: 5/8" GLUED AND NAILED

DATE: 2020-07-27

2nd FLOOR



Products				
PlotID	Length	Product	Plies	Net Qty
J1	20-00-00	11 7/8" NI-40x	1	17
J2	12-00-00	11 7/8" NI-40x	1	8
J3	8-00-00	11 7/8" NI-40x	1	2
J4	20-00-00	11 7/8" NI-80	1	16
B7	20-00-00	1-3/4" x 11-7/8" VERSA-LAM® 2.0 3100 SP	2	2
B11	10-00-00	1-3/4" x 11-7/8" VERSA-LAM® 2.0 3100 SP	2	2
B6	10-00-00	1-3/4" x 11-7/8" VERSA-LAM® 2.0 3100 SP	2	2
B9	10-00-00	1-3/4" x 11-7/8" VERSA-LAM® 2.0 3100 SP	2	2
B10	8-00-00	1-3/4" x 11-7/8" VERSA-LAM® 2.0 3100 SP	1	1

Connector Summary		
Qty	Manuf	Product
6	H1	IUS2.56/11.88
1	H2	HUS1.81/10
1	H3	IUS3.56/11.88
1	H4	HGUS410
2	H4	HGUS410



FROM PLAN DATED:

BUILDER: ROYAL PINE HOMES

SITE: CENTREFIELD WEST GORMLEY

MODEL: 2007

ELEVATION: A,B

LOT:

CITY: RICHMAND HILL

SALESMAN: MARIO DICIANO

DESIGNER: AJ

REVISION:

NOTES:

REFER TO THE **NORDIC INSTALLATION** GUIDE FOR PROPER STORAGE AND INSTALLATION.

**SQUASH BLOCKS** OF 2x4, 2x6, 2x8 #2 S.P.F REQ'D UNDER INTERIOR UNIFORM LOAD BEARING WALLS. **MULTIPLE SQUASH BLOCKS** REQ'D UNDER CONCENTRATED LOADS. SEE FIGURE 1. **CANTILEVERED JOISTS** INCLUDING **CANT' OVER BRICK** REQ. I-JOIST BLOCKING ALONG BEARING AND RIMBOARD CLOSURE AT ENDS. SEE FIGURES 4 & 5 FOR REINFORCEMENT REQUIREMENTS. FOR **HOLES** INCLUDING **DUCT CHASE** AND **FIELD CUT OPENINGS** SEE FIGURE 7, TABLES 1 & 2. **CERAMIC TILE** APPLICATION AS PER O.B.C 9.30.6.

LOADING:

DESIGN LOADS: L/480.000

LIVE LOAD: 40.0 lb/ft²

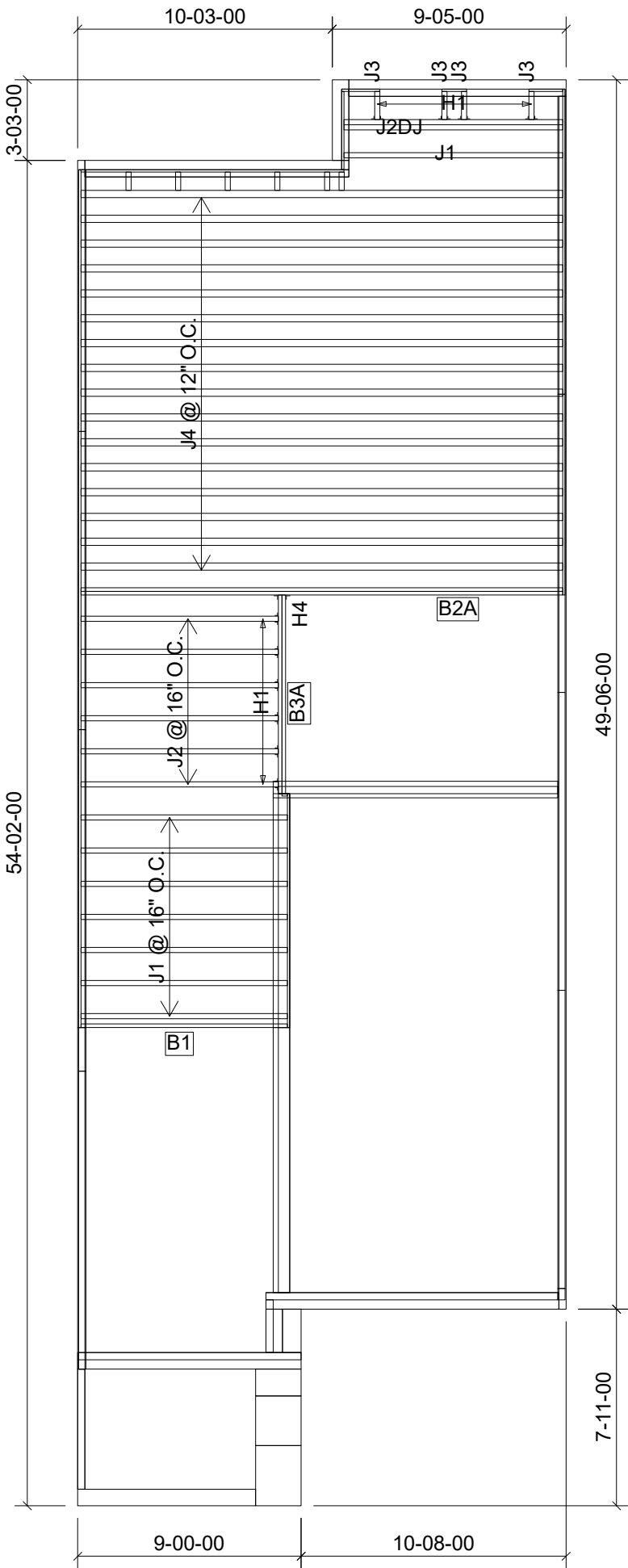
DEAD LOAD: 20.0 lb/ft ²

SUBFLOOR: 3/4" GLUED AND NAILED

DATE: 2020-07-27

1st FLOOR

OPTION



Products				
PlotID	Length	Product	Plies	Net Qty
J1	10-00-00	11 7/8" NI-40x	1	8
J2DJ	10-00-00	11 7/8" NI-40x	2	2
J2	8-00-00	11 7/8" NI-40x	1	6
J3	2-00-00	11 7/8" NI-40x	1	4
J4	20-00-00	11 7/8" NI-80	1	16
B2A	20-00-00	1-3/4" x 11-7/8" VERSA-LAM® 2.0 3100 SP	2	2
B1	10-00-00	1-3/4" x 11-7/8" VERSA-LAM® 2.0 3100 SP	1	1
B3A	8-00-00	1-3/4" x 11-7/8" VERSA-LAM® 2.0 3100 SP	2	2

Connector Summary		
Qty	Manuf	Product
6	H1	IUS2.56/11.88
4	H1	IUS2.56/11.88
1	H4	HGUS410



FROM PLAN DATED:

BUILDER: ROYAL PINE HOMES

SITE: CENTREFIELD WEST GORMLEY

MODEL: 2007

ELEVATION: A,B

LOT:

CITY: RICHMAND HILL

SALESMAN: MARIO DICIANO

DESIGNER: AJ

REVISION:

NOTES:

REFER TO THE NORDIC **INSTALLATION GUIDE** FOR PROPER STORAGE AND INSTALLATION. **SQUASH BLOCKS** OF 2x4, 2x6, 2x8 #2 S.P.F. REQ'D UNDER INTERIOR UNIFORM LOAD BEARING WALLS. **MULTIPLE SQUASH BLOCKS** REQ'D UNDER CONCENTRATED LOADS. SEE FIGURE 1. **CANTILEVERED JOISTS** INCLUDING **CANT' OVER BRICK** REQ. I-JOIST BLOCKING ALONG BEARING AND RIMBOARD CLOSURE AT ENDS. SEE FIGURE 7 TABLES 4 & 5 FOR REINFORCEMENT REQUIREMENTS. FOR **HOLES** INCLUDING **DUCT CHASE** AND **FIELD CUT OPENINGS** SEE FIGURE 7 TABLES 1 & 2 OF THE INSTALLATION GUIDE. **CERAMIC TILE** APPLICATION AS PER O.B.C. 9.30.6

LOADING:

DESIGN LOADS: L/480.000

LIVE LOAD: 40.0 lb/ft²

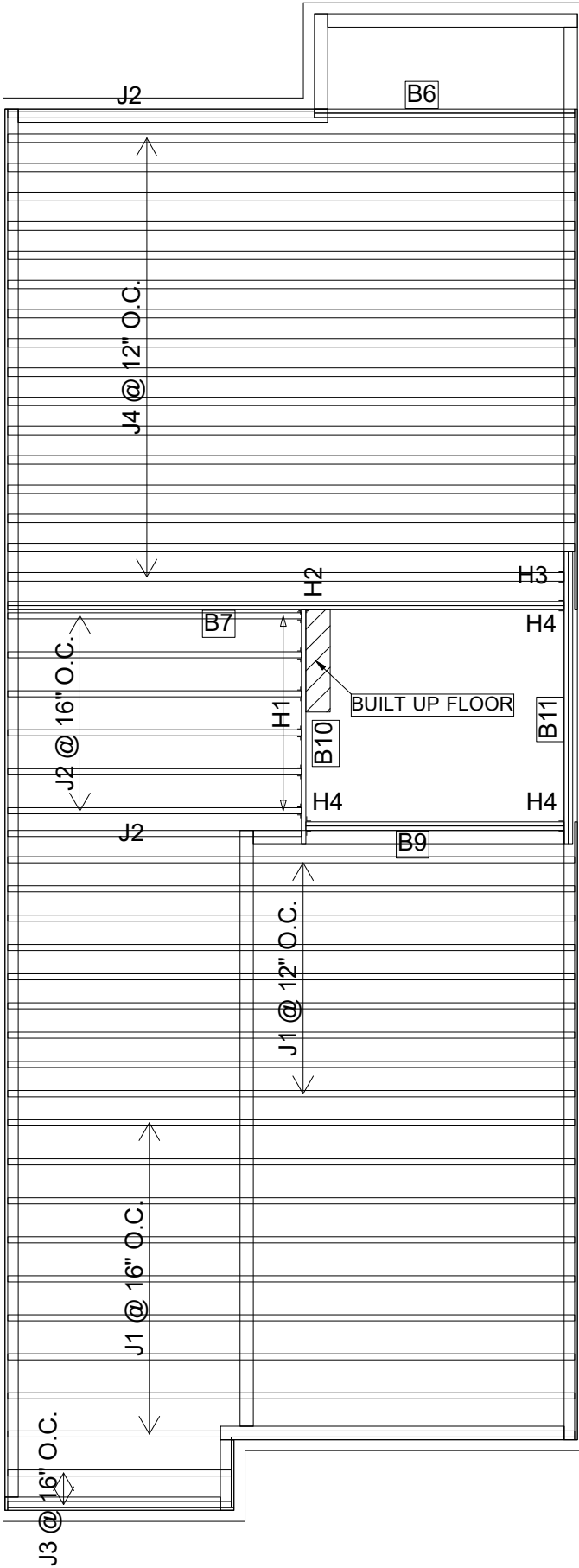
DEAD LOAD: 20.0 lb/ft²

SUBFLOOR: 5/8" GLUED AND NAILED

DATE: 2020-07-27

## 2nd FLOOR

OPTION



Products				
PlotID	Length	Product	Plies	Net Qty
J1	20-00-00	11 7/8" NI-40x	1	18
J2	12-00-00	11 7/8" NI-40x	1	8
J3	8-00-00	11 7/8" NI-40x	1	2
J4	20-00-00	11 7/8" NI-80	1	16
B7	20-00-00	1-3/4" x 11-7/8" VERSA-LAM® 2.0 3100 SP	2	2
B11	10-00-00	1-3/4" x 11-7/8" VERSA-LAM® 2.0 3100 SP	2	2
B6	10-00-00	1-3/4" x 11-7/8" VERSA-LAM® 2.0 3100 SP	2	2
B9	10-00-00	1-3/4" x 11-7/8" VERSA-LAM® 2.0 3100 SP	2	2
B10	8-00-00	1-3/4" x 11-7/8" VERSA-LAM® 2.0 3100 SP	1	1

Connector Summary		
Qty	Manuf	Product
6	H1	IUS2.56/11.88
1	H2	HUS1.81/10
1	H3	IUS3.56/11.88
1	H4	HGUS410
2	H4	HGUS410