



## SITE INSTRUCTION

**Forestside Estates**  
 Attmar & Palleschi Drive  
 Brampton, Ontario  
 Attn: **Vince Staffieri**

### SI A02r

**PROJECT** : Forestside  
**PROJECT #** : 1331.15  
**DATE** : July 26, 2021

Site instructions/memos and Addendums are issued only for the purpose of recording any clarification or interpretation of the contract documents or giving direction on problems resulting from field conditions. These memos are subject to the provisions of the contract documents and unless reviewed with and authorized by the Client, will not affect the contract. Should the Contractor require a change in the contract price or project schedule, he shall submit to the Client, prior to commencement of work outlined in this memo, an itemized proposal for approval.

**Title:** Revisions to plans as itemized.

Reference:		Changes:
A800	Typical Details	<ul style="list-style-type: none"> <li>Updated Typical details as per acoustical coordination.</li> </ul>

**Reason:** Revisions to plans as per architectural review of acoustical, electrical, mechanical, and structural coordination.

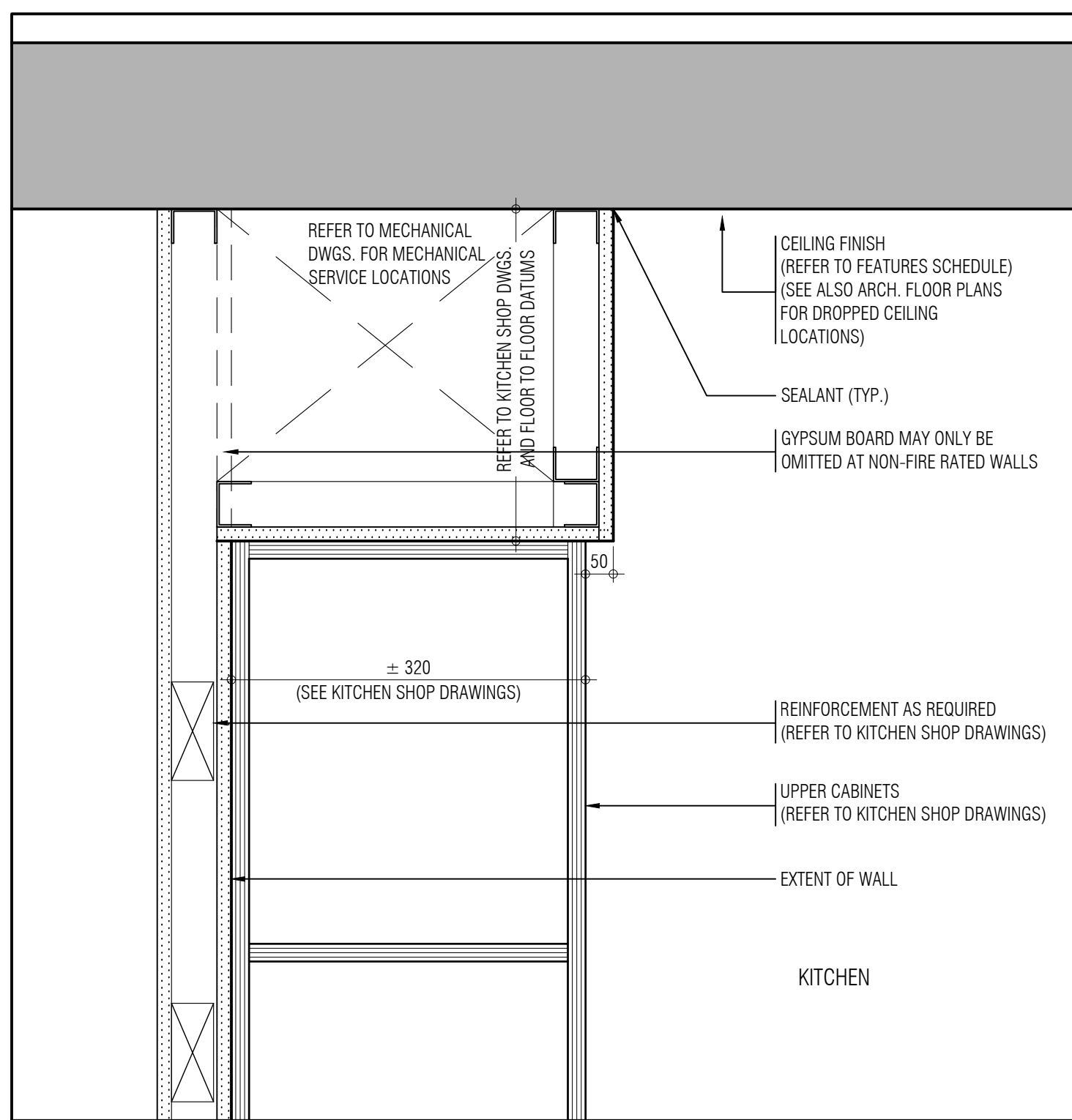
**GRAZIANI + CORAZZA**  
 ARCHITECTS INC

**D. Biase** C.E.T.  
 Principal

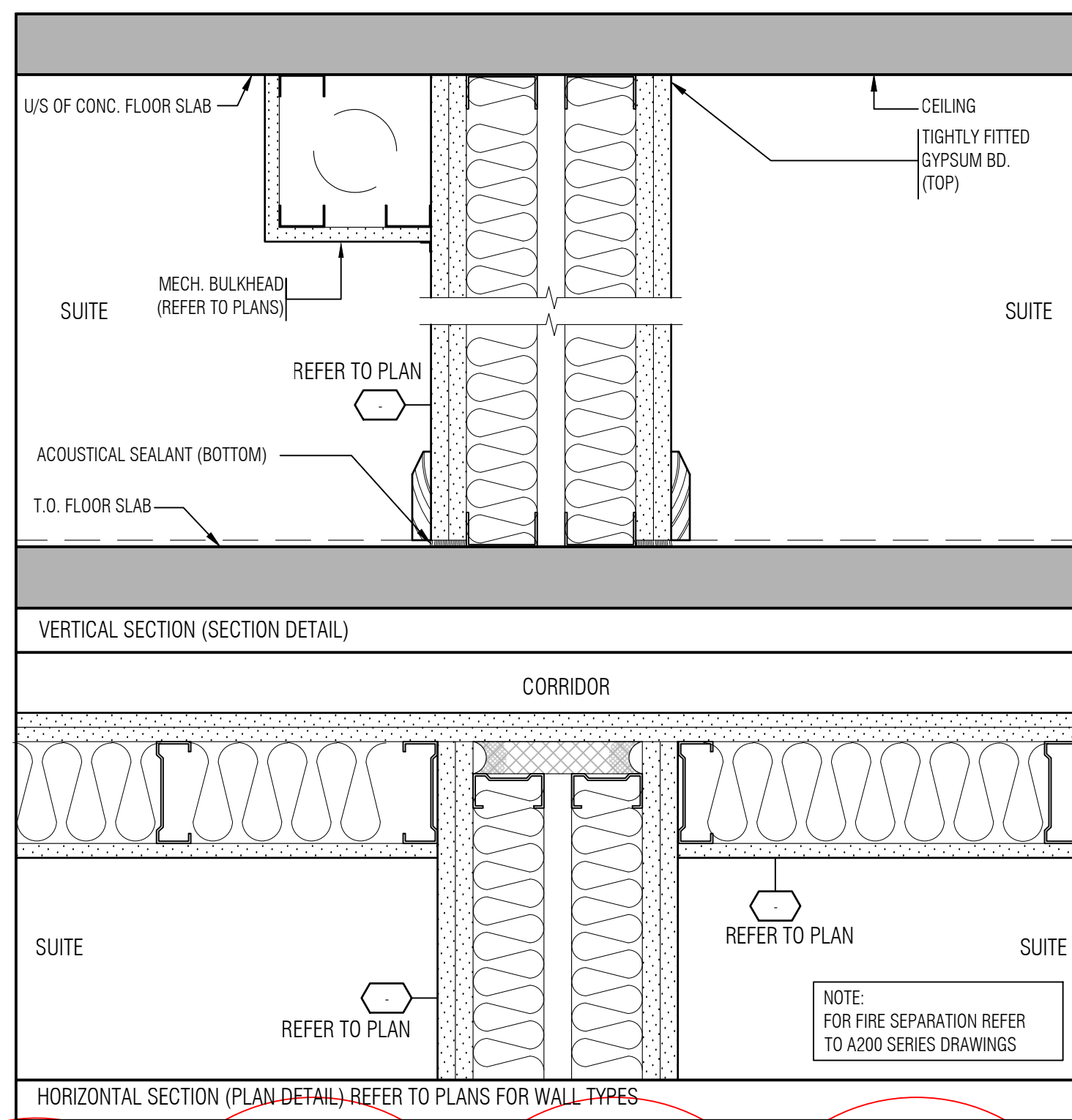
### Distribution:

Royal Pine Homes	Vince Staffieri Cinzia Caruzo	<a href="mailto:vince@royalpinehomes.com">vince@royalpinehomes.com</a> <a href="mailto:Cinzia@royalpinehomes.com">Cinzia@royalpinehomes.com</a>
Jablonski Engineering	Kevin Deonaraine	<a href="mailto:kdeonaraine@astint.on.ca">kdeonaraine@astint.on.ca</a>
United Engineering	Rene Cuales Leonard Matthews Susan Pan	<a href="mailto:rene@u-eng.ca">rene@u-eng.ca</a> <a href="mailto:Lenard@u-eng.ca">Lenard@u-eng.ca</a> <a href="mailto:susan@u-eng.ca">susan@u-eng.ca</a>
Candevcon Limited	Diarmund Hogan Dudister Damnaraigh	<a href="mailto:dhorgan@candevcon.com">dhorgan@candevcon.com</a> <a href="mailto:dude@candevcon.com">dude@candevcon.com</a>
Starfire Sprinkler Systems	Elite Novosselova Peter Adrian	<a href="mailto:elitecanada@hotmail.com">elitecanada@hotmail.com</a> <a href="mailto:Peter@starfiresystems.biz">Peter@starfiresystems.biz</a>
Strybos Barron King Ltd.	Bryn Barron Kaleigh Gills Sydney Martel	<a href="mailto:bbarron@strybos.com">bbarron@strybos.com</a> <a href="mailto:kqillis@strybos.com">kqillis@strybos.com</a> <a href="mailto:smartel@strybos.com">smartel@strybos.com</a>
Graziani + Corazza Architects	Domenic Biase Gino Colangelo Fernando Croatto	<a href="mailto:dbiase@gc-architects.com">dbiase@gc-architects.com</a> <a href="mailto:gcolangelo@gc-architects.com">gcolangelo@gc-architects.com</a> <a href="mailto:FCroatto@gc-architects.com">FCroatto@gc-architects.com</a>

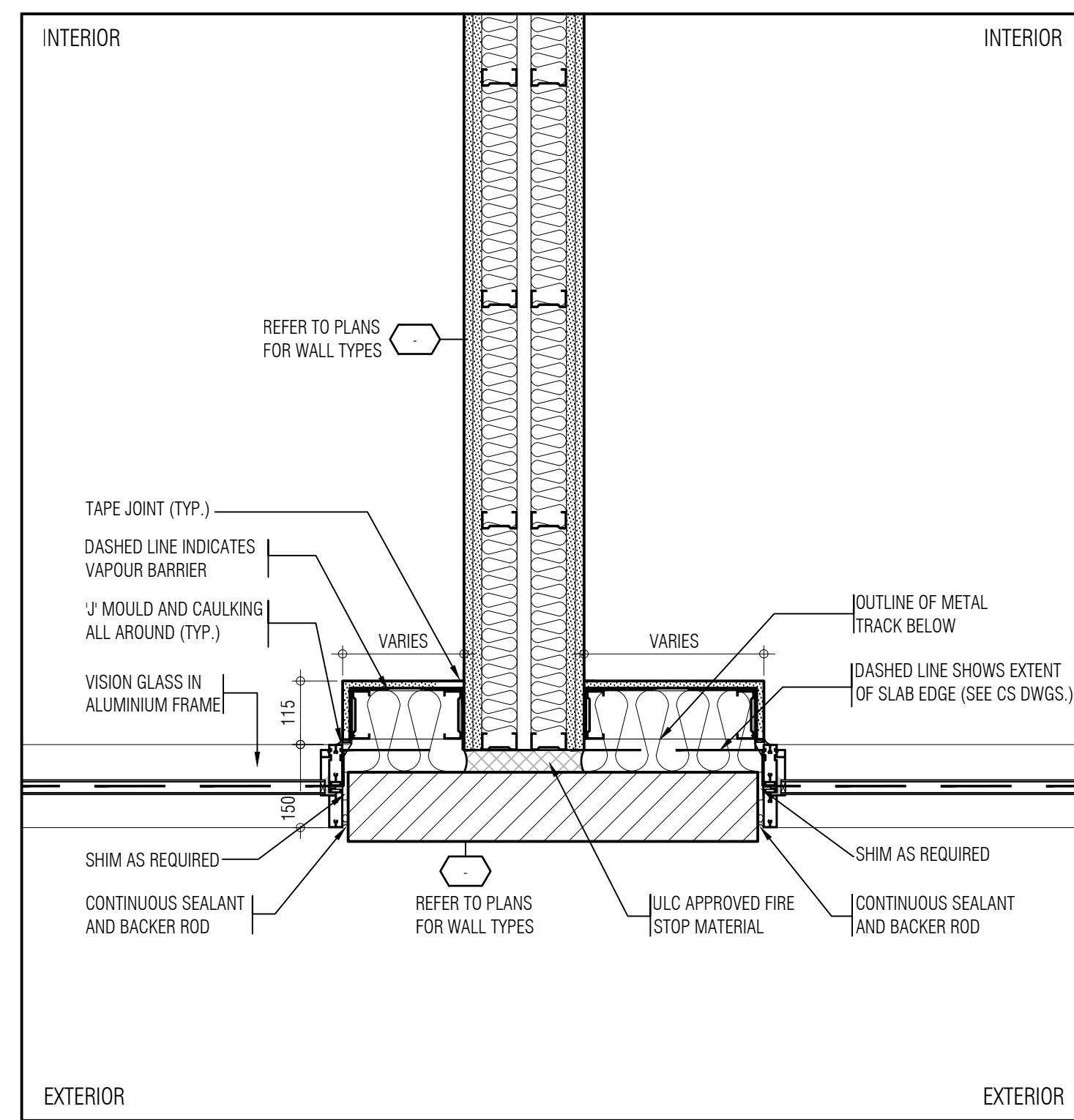




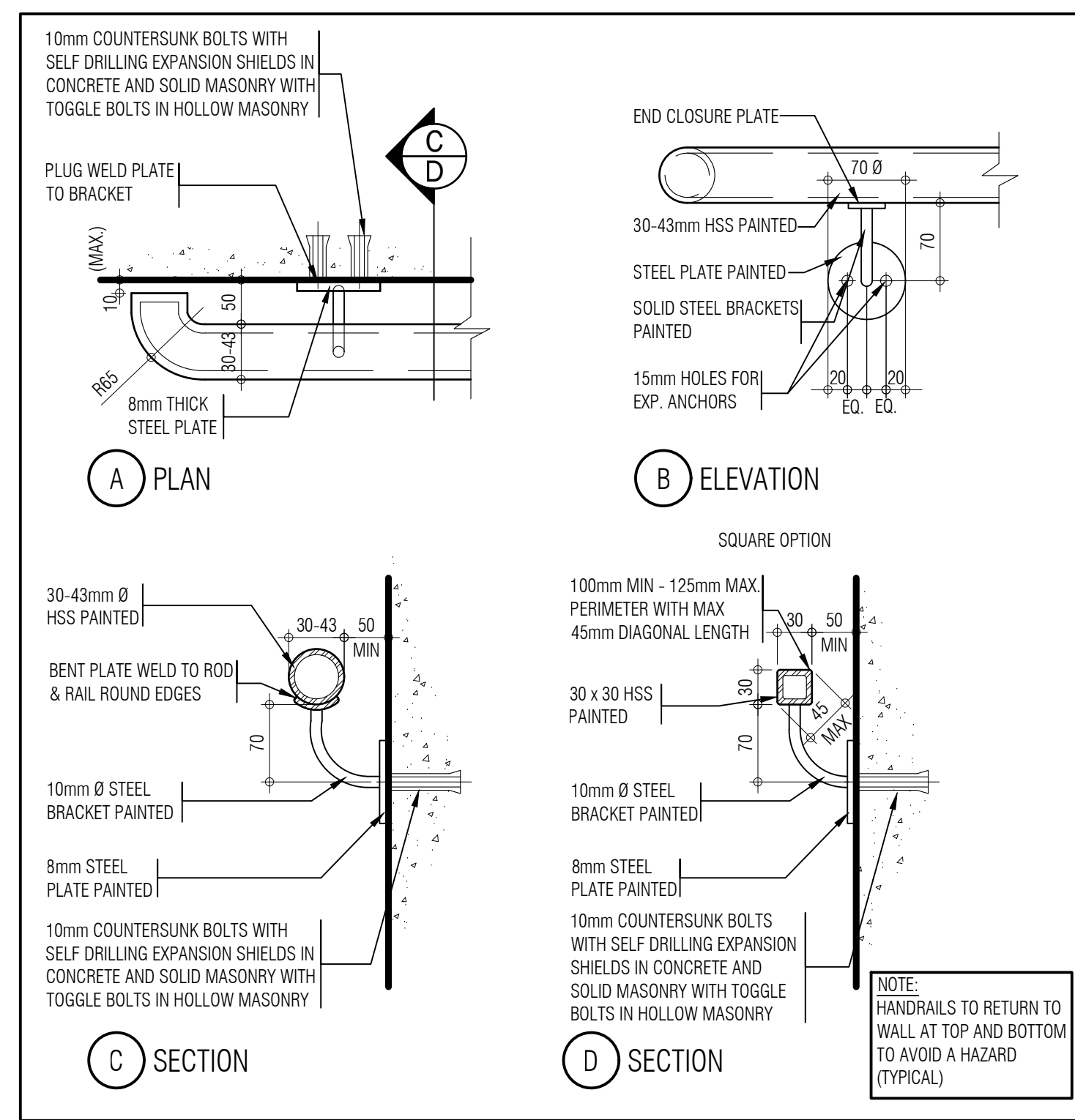
BULKHEAD ABOVE UPPER KITCHEN CABINETS (16)  
SCALE: 1:5 A812



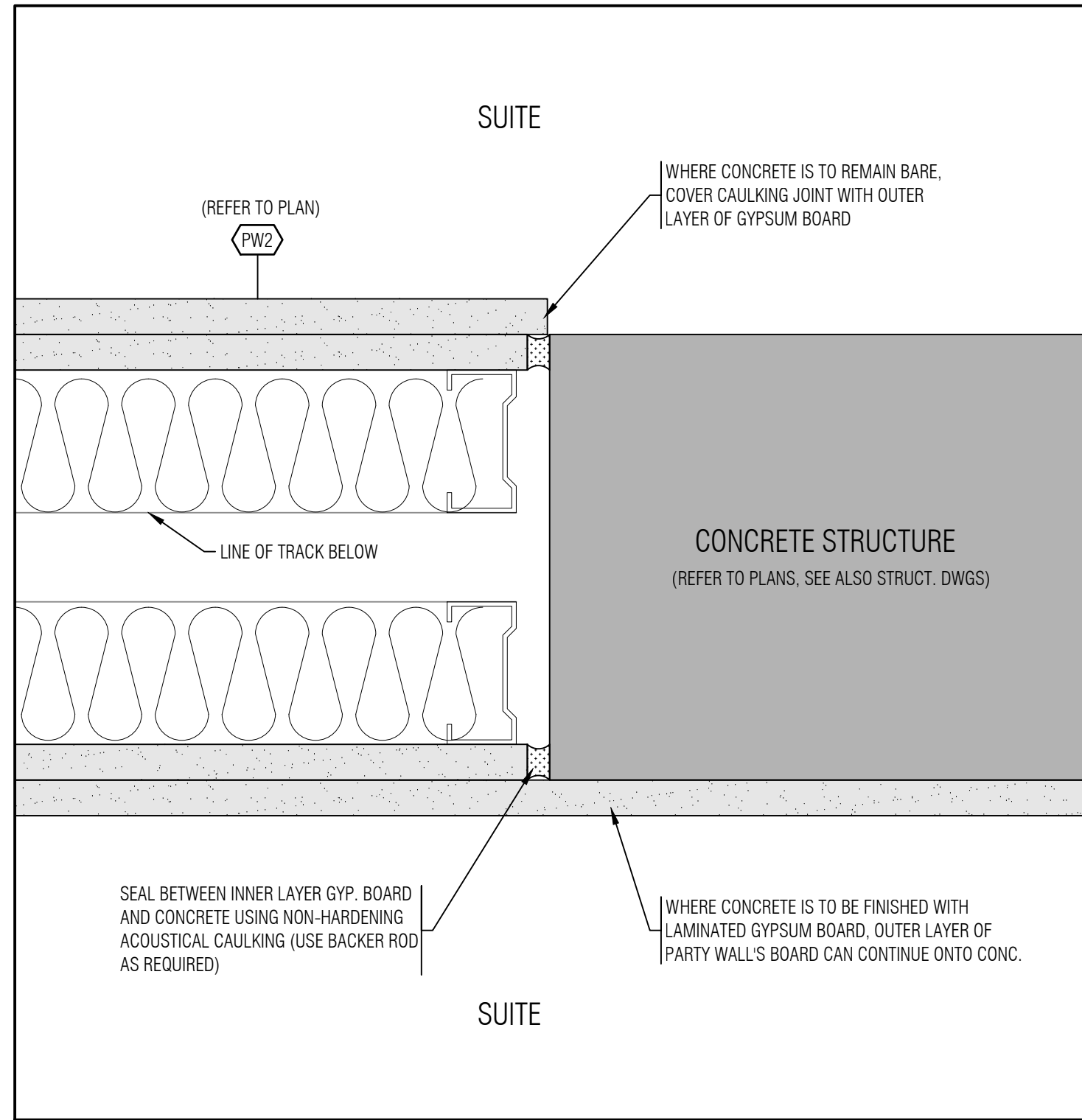
TYPICAL PLAN AND SECTION DETAIL @ PARTY WALL (12)  
SCALE: 1:5 A812



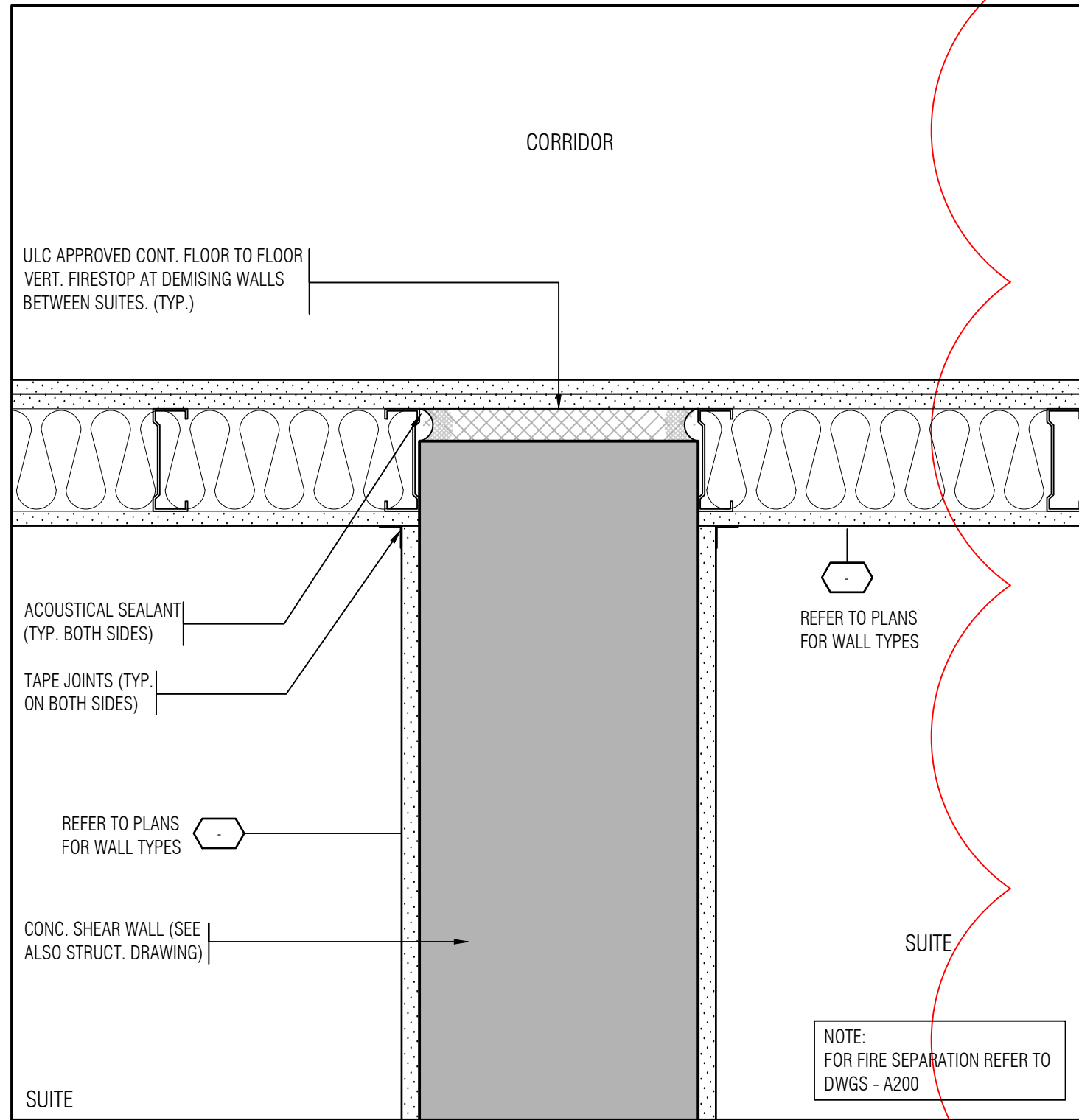
TYPICAL DETAIL @ PARTY WALL (8)  
SCALE: 1:10 A812



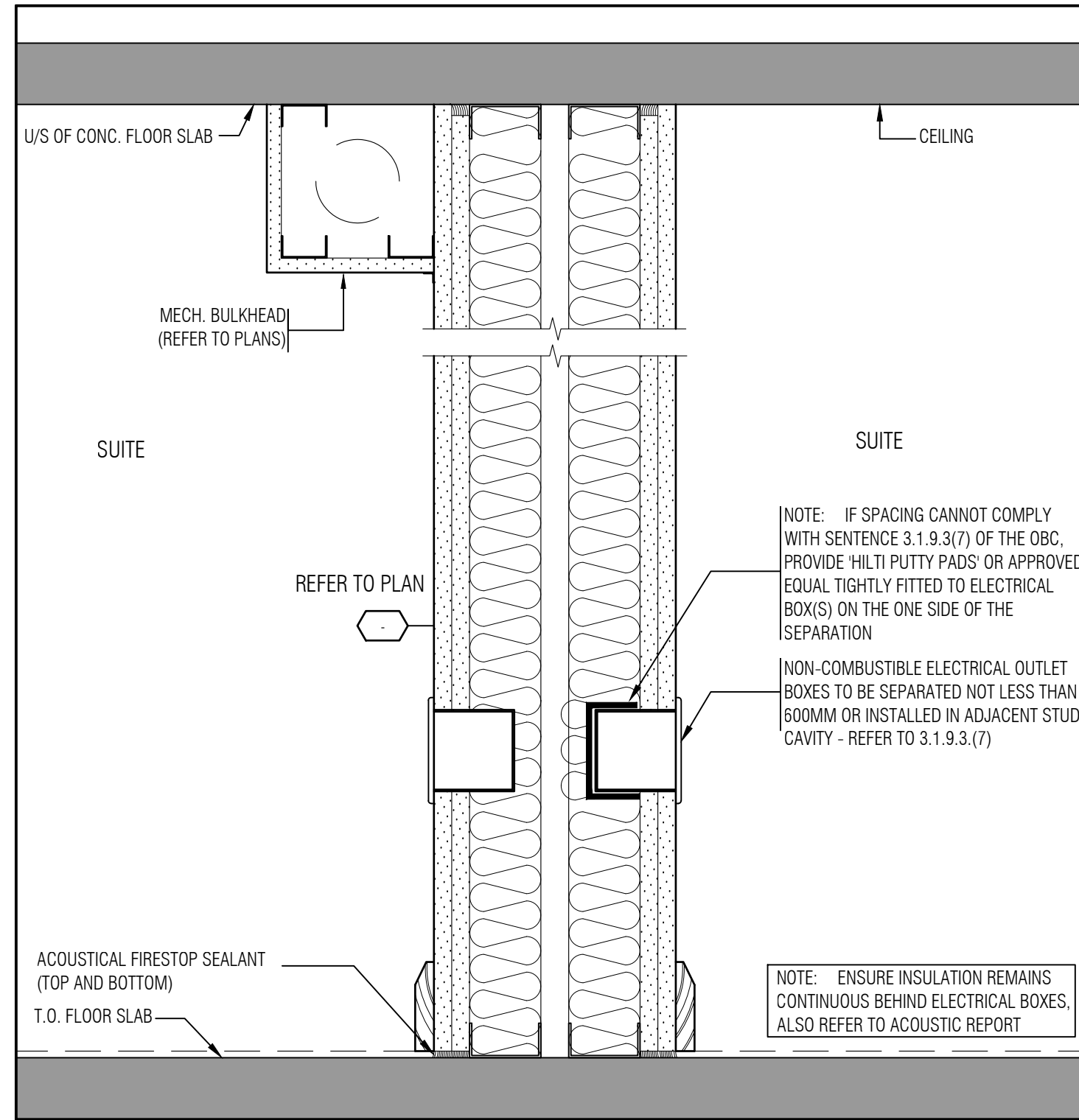
WALL MOUNTED STEEL HANDRAIL DETAILS (4)  
SCALE: 1:5 A812



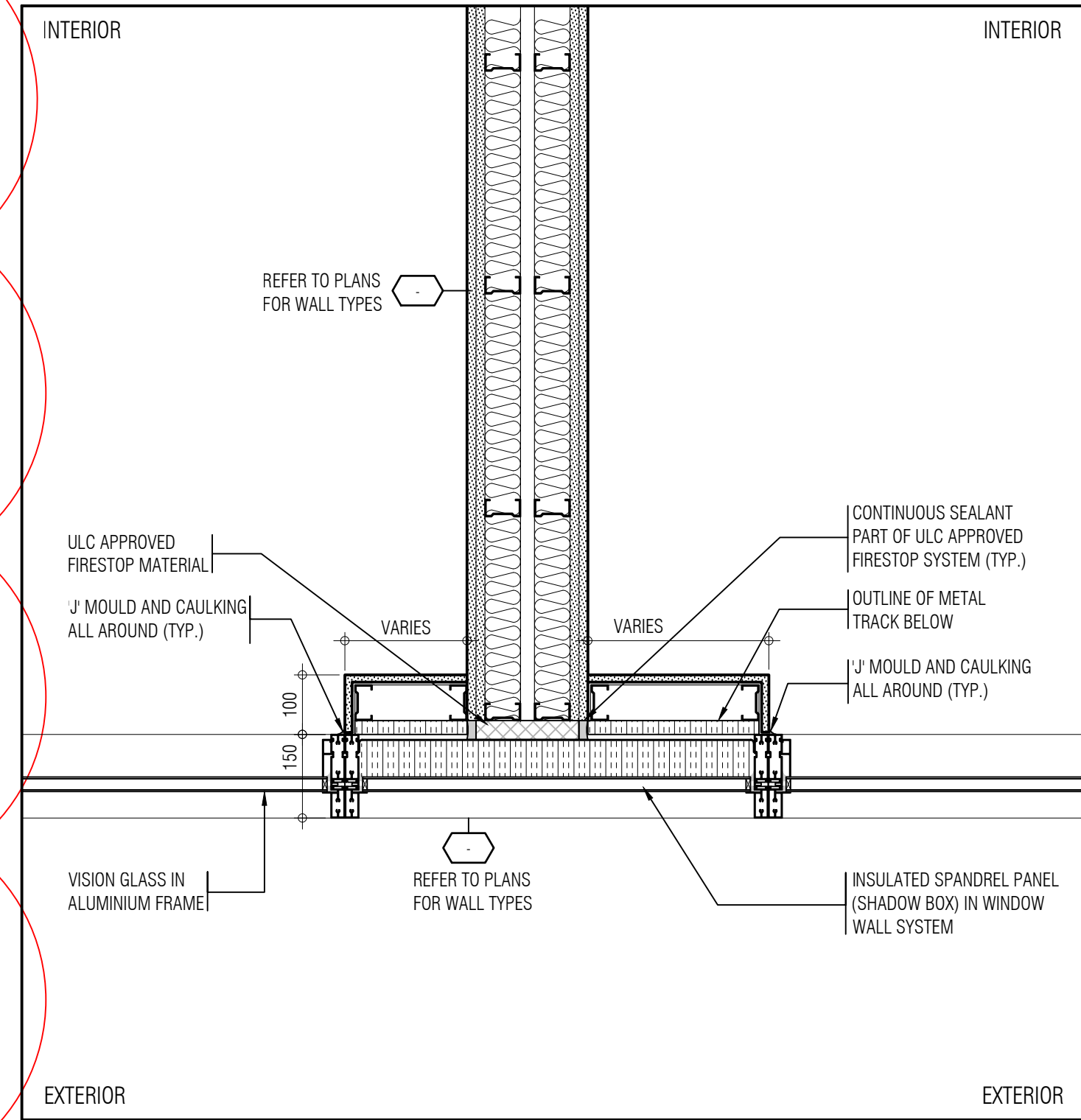
PARTY WALL TO CONCRETE WALL ACOUSTICAL SEALING (19)  
SCALE: 1:2.5 A812



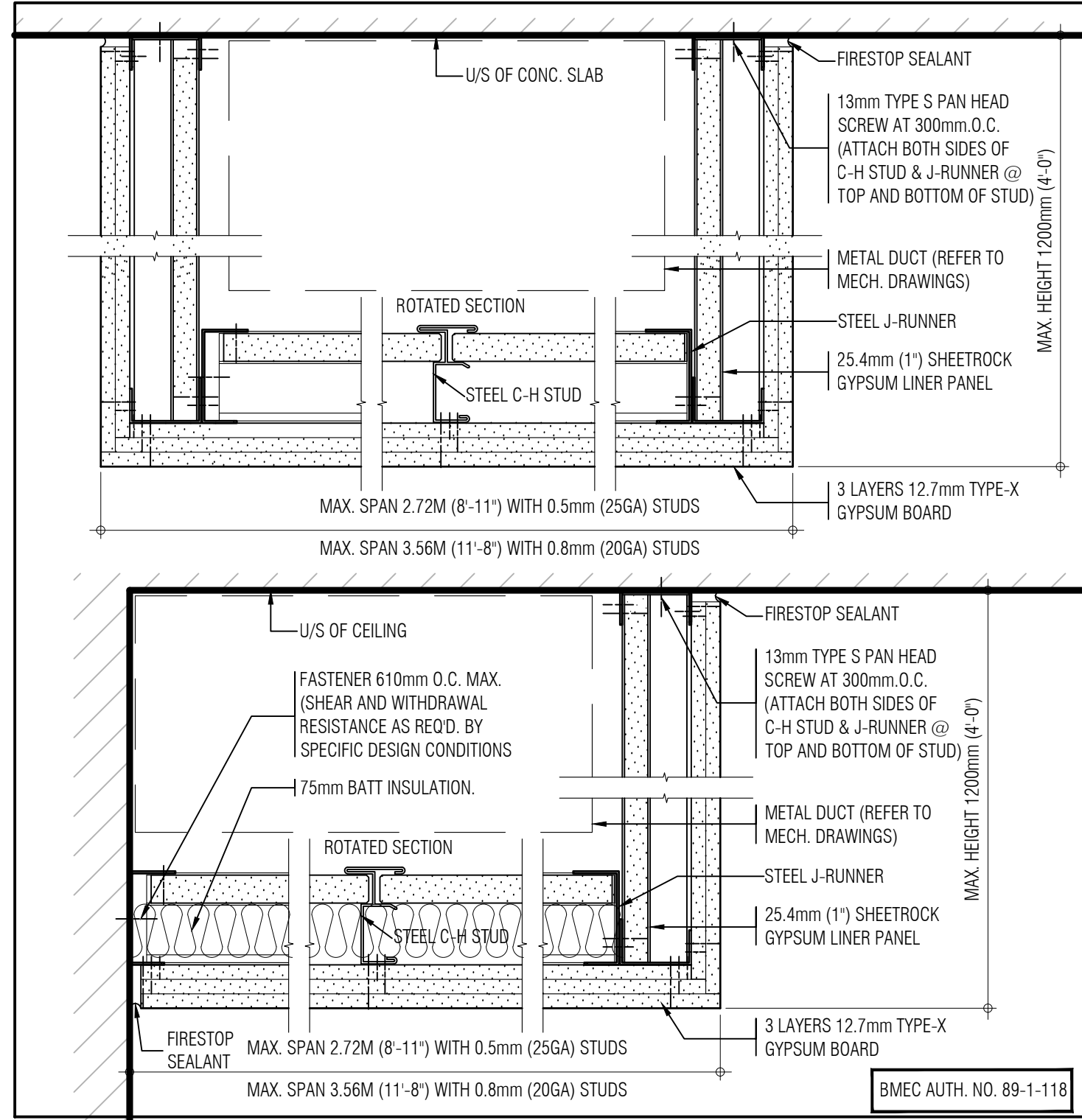
SECTION AT SHEAR WALL AND DEMISING WALL INTERSECTION (11)  
SCALE: 1:5 A812



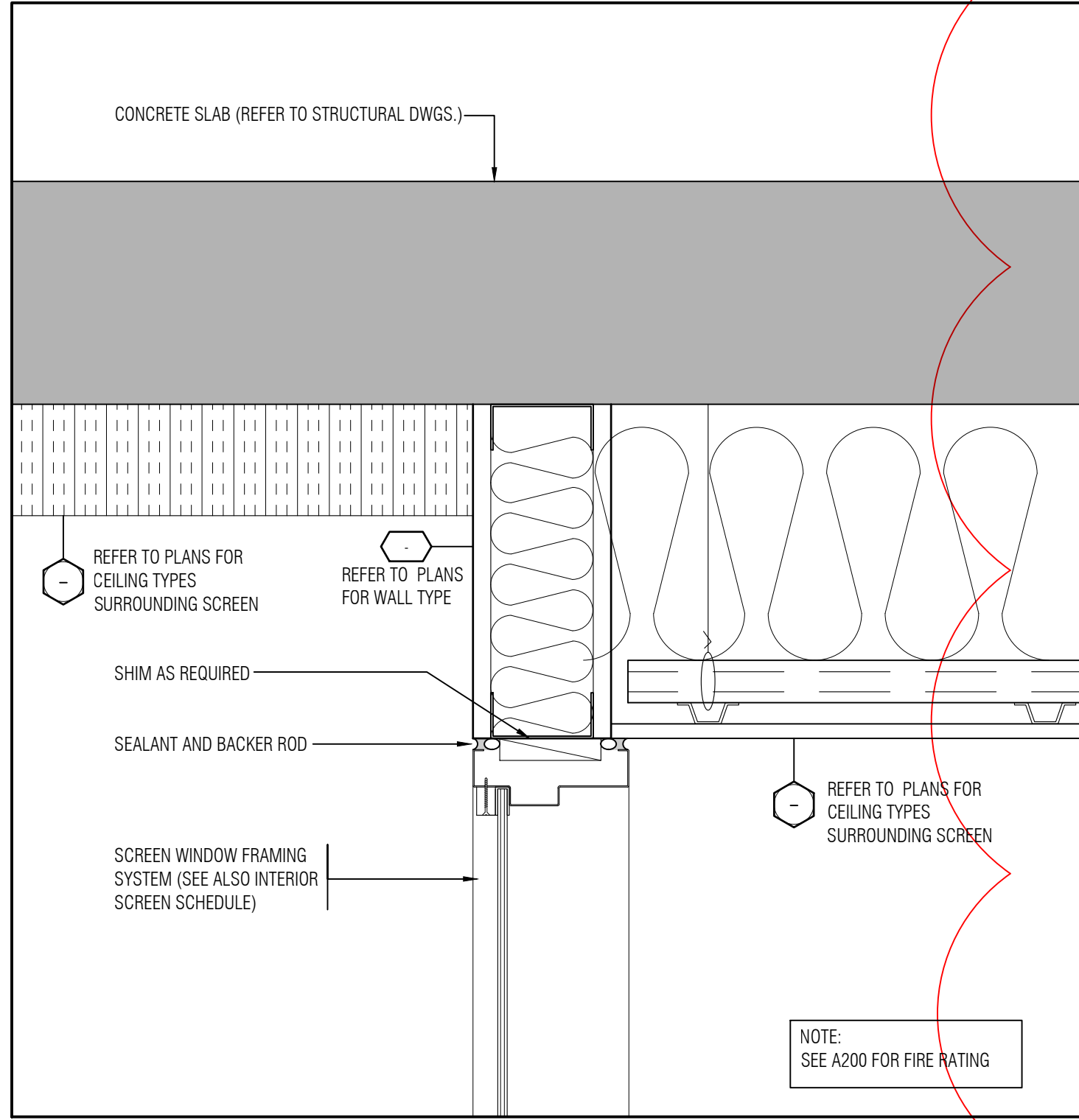
ELECTRICAL OUTLET BOX SECTION DETAIL - PARTY WALL (3)  
SCALE: 1:5 A812



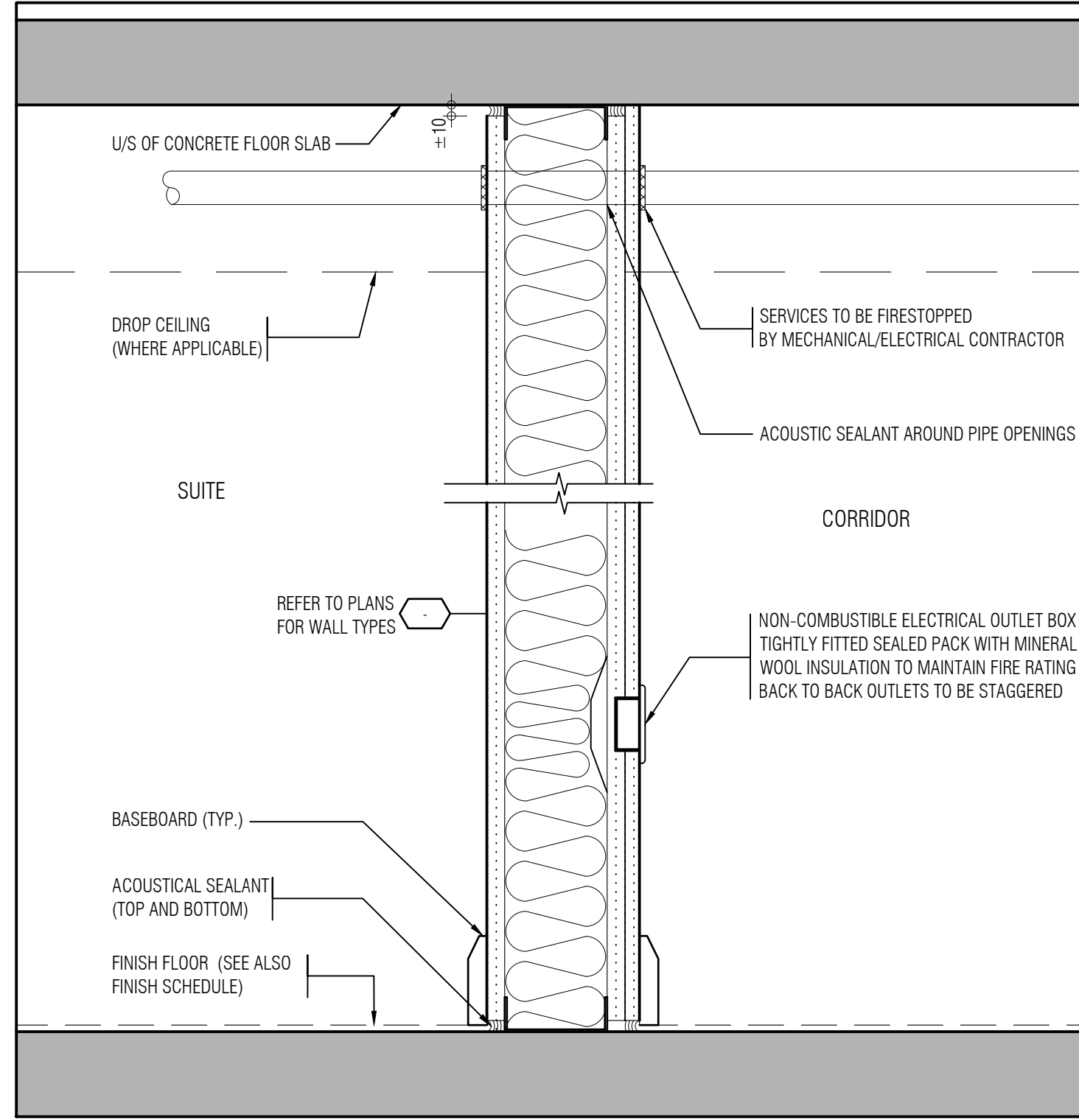
TYPICAL DETAIL @ PARTY WALL (7)  
SCALE: 1:10 A812



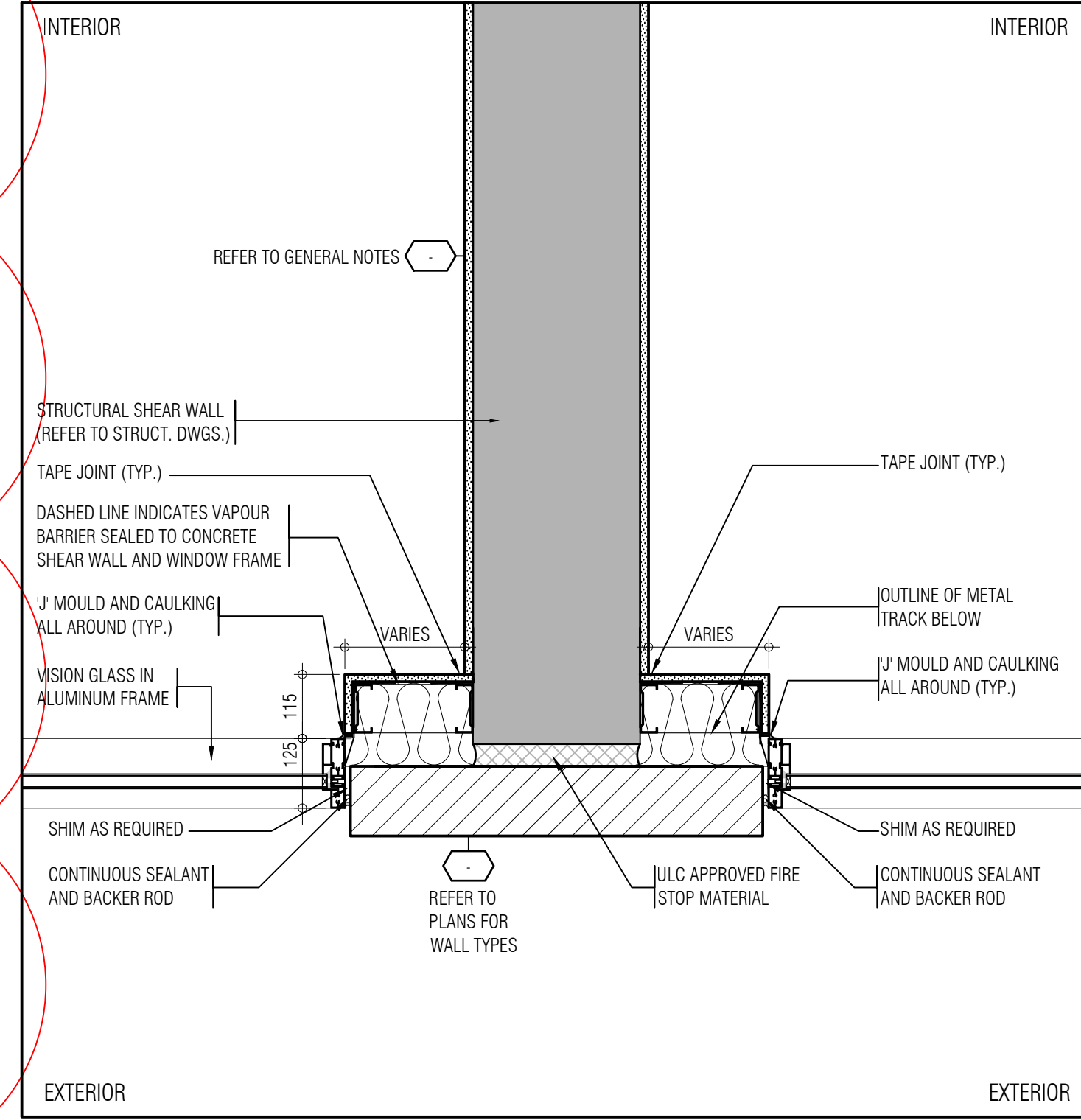
2HR FIRE RATED ENCLOSURE (18)  
SCALE: 1:5 A812



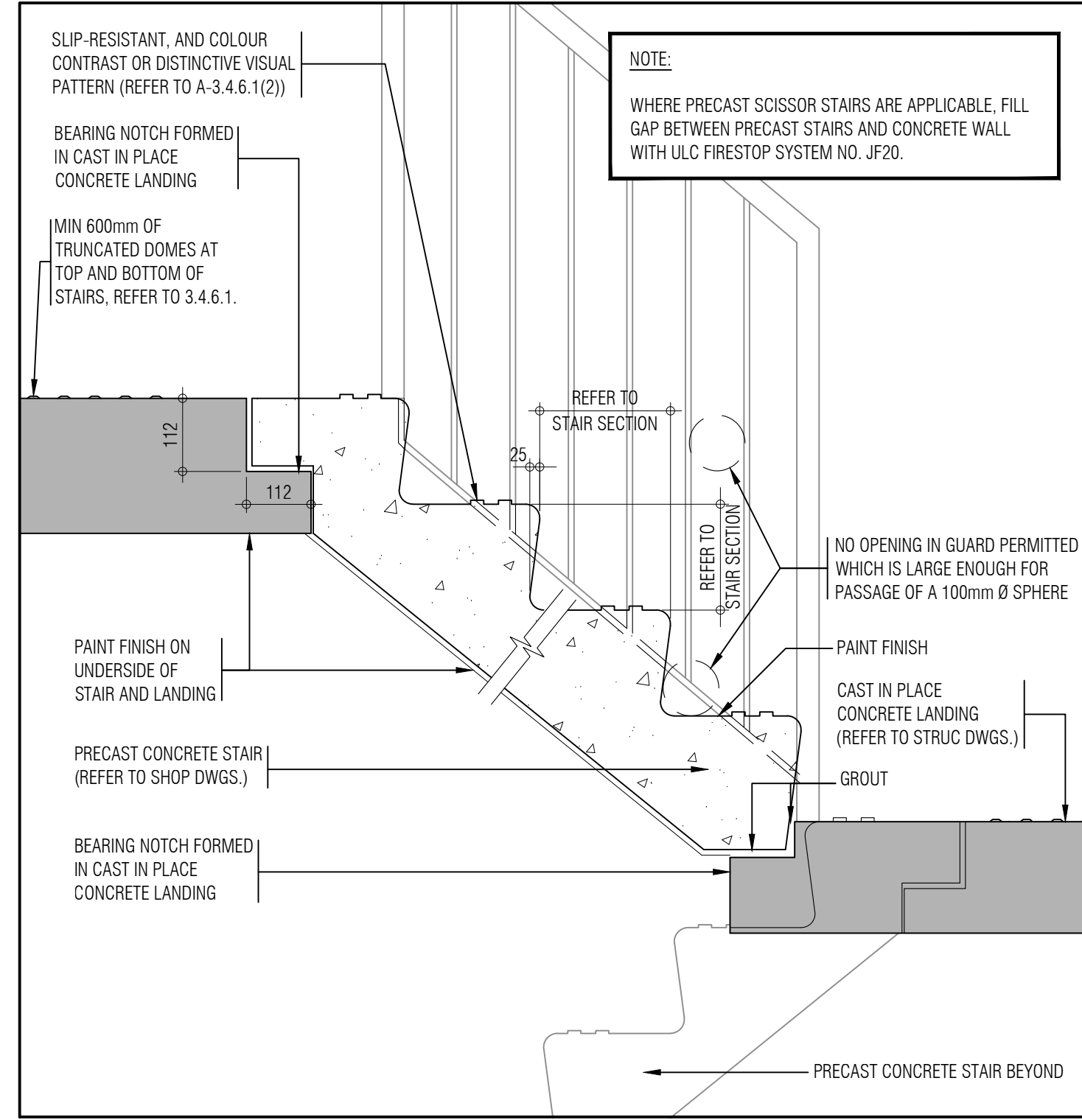
SECTION DETAIL @ WINDOW SCREEN FIRE RATED AT PARKING LEVEL (14)  
SCALE: 1:5 A812



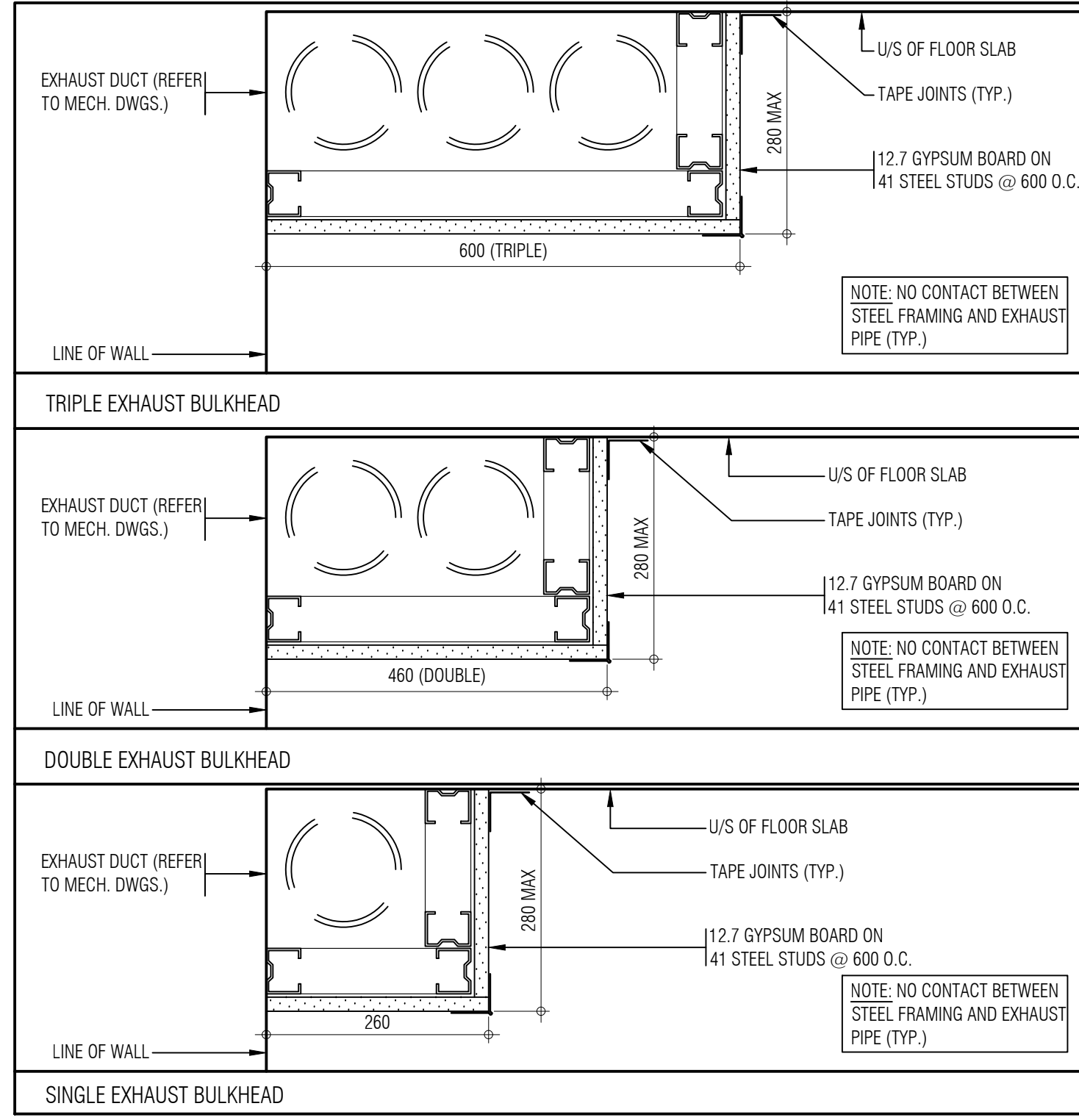
ELECTRICAL OUTLET BOX DETAIL (13)  
SCALE: 1:5 A812



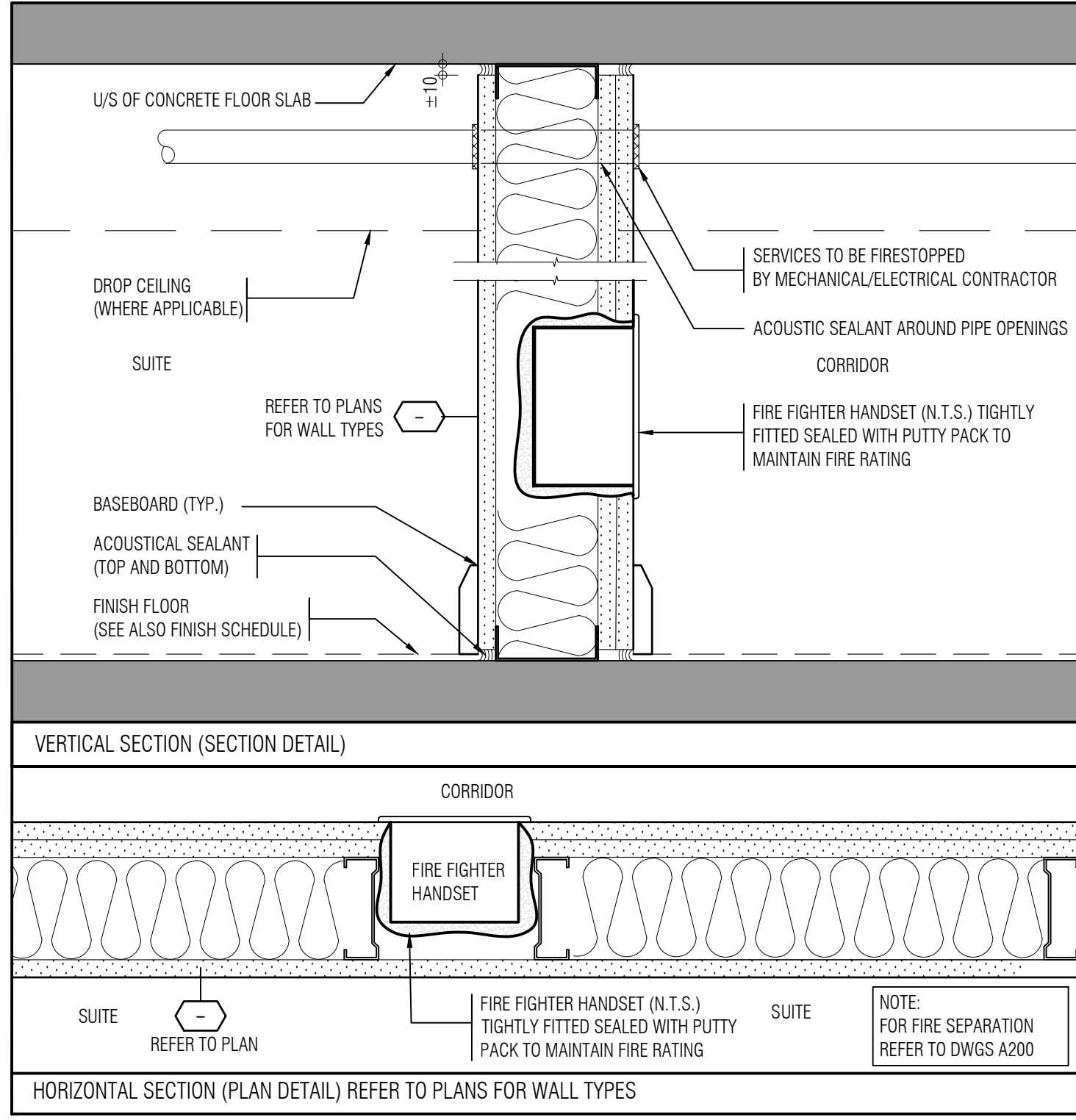
TYPICAL DETAIL @ SHEAR WALL (6)  
SCALE: 1:10 A812



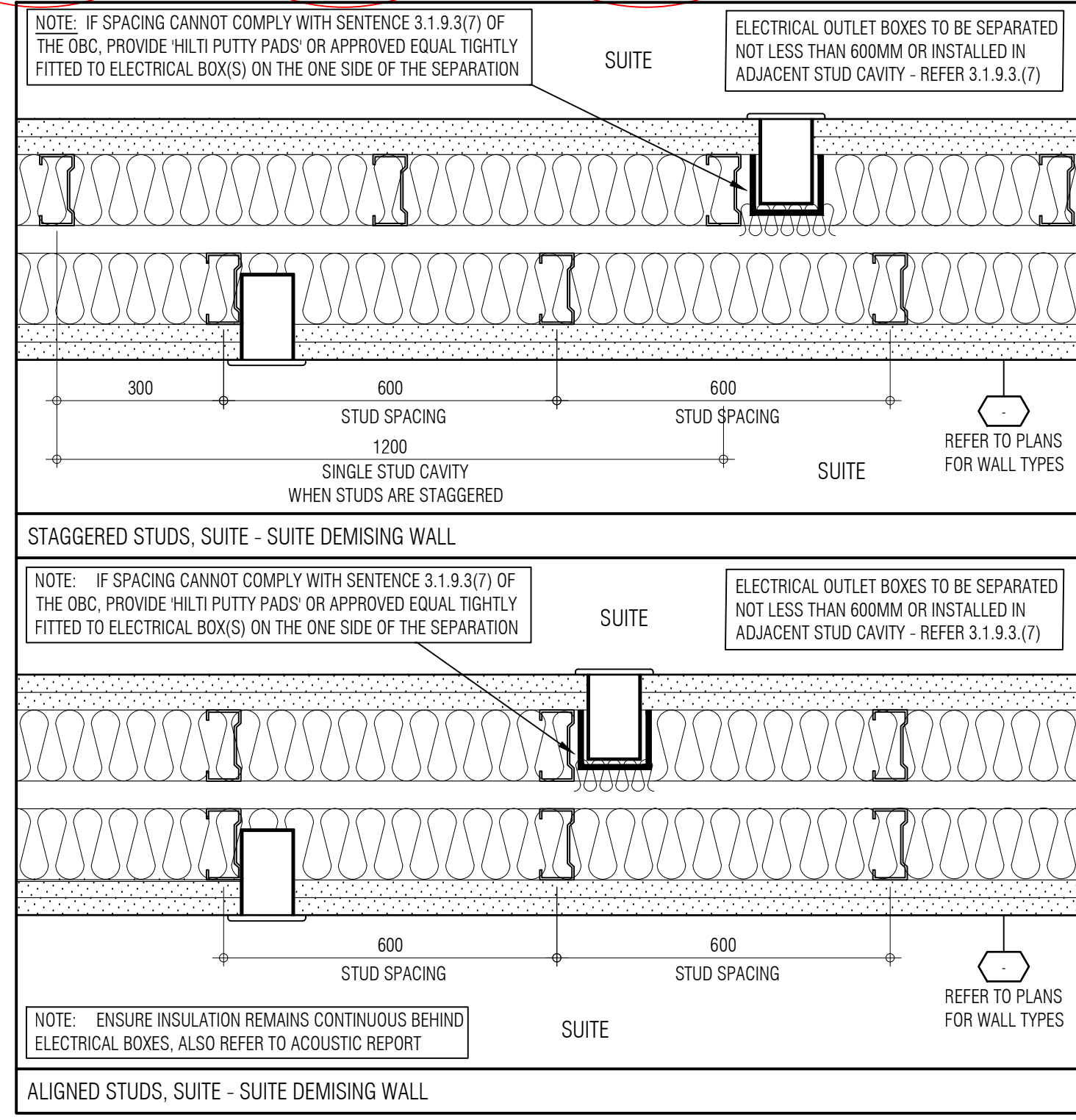
PRECAST CONCRETE STAIR DETAIL - TYPICAL (2)  
SCALE: 1:10 A812



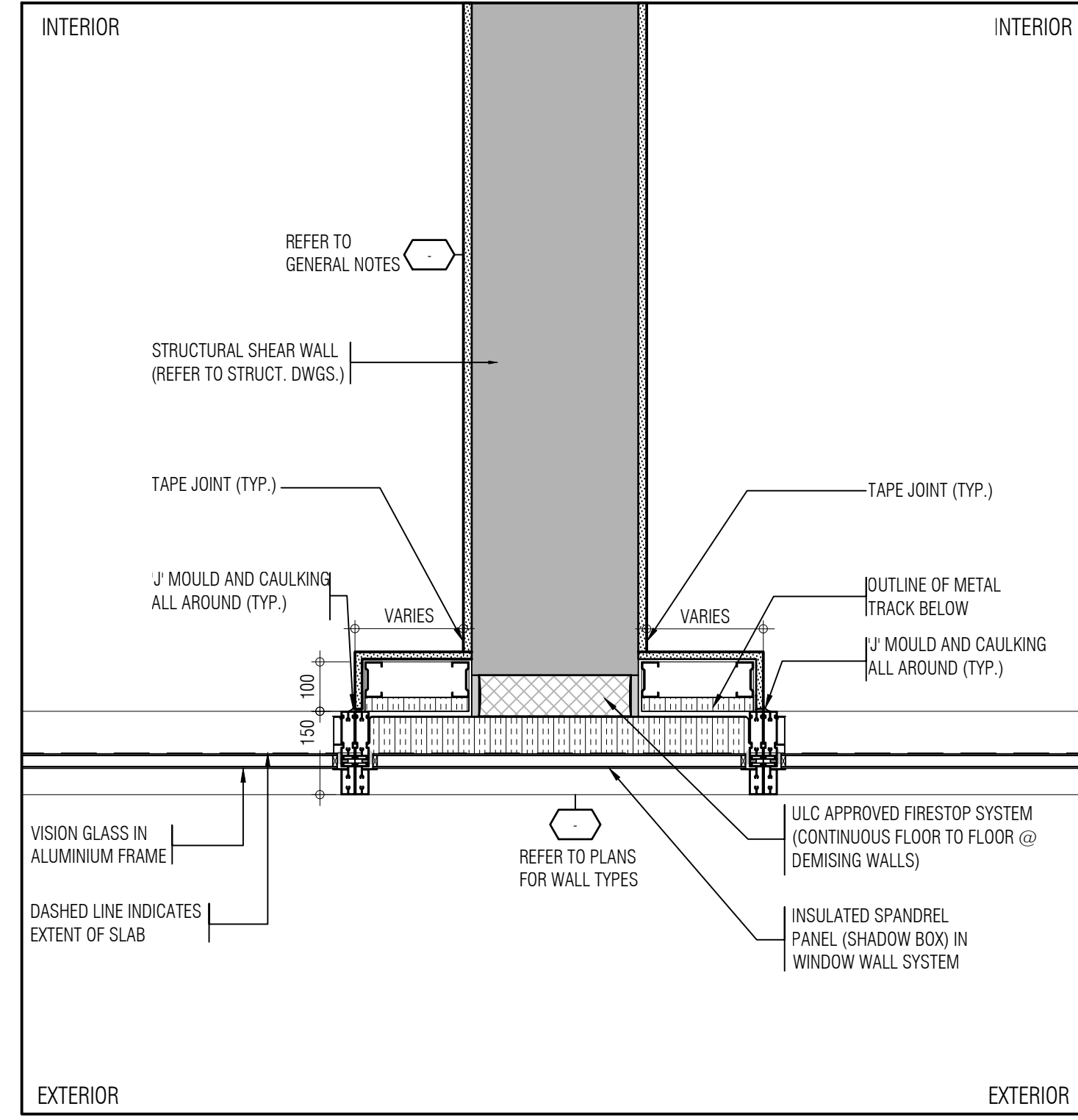
TYPICAL BULKHEAD DETAIL (17)  
SCALE: 1:5 A812



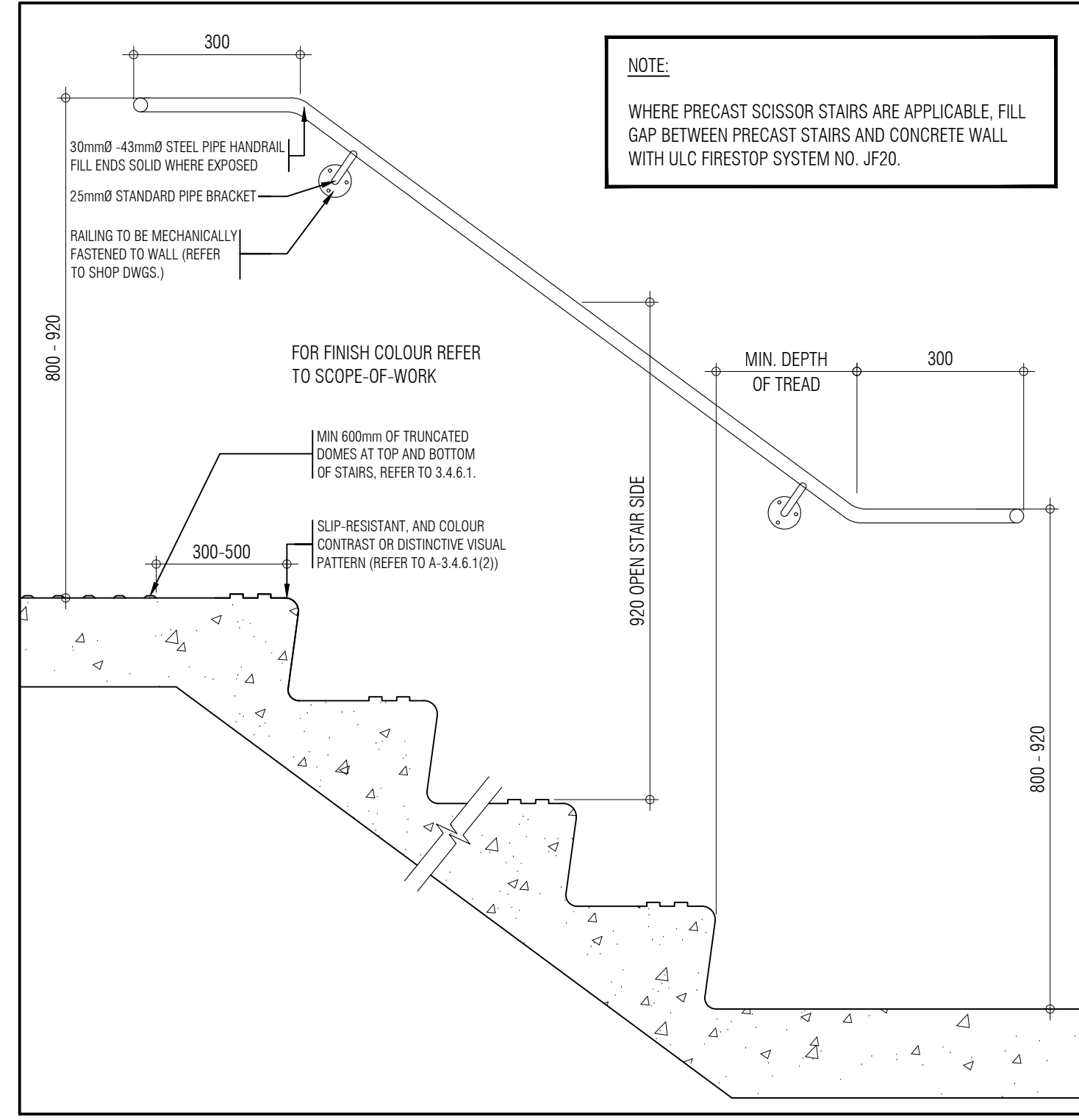
TYPICAL PLAN AND SECTION DETAIL @ F.F.H (21)  
SCALE: 1:5 A812



ELECTRICAL OUTLET BOX PLAN DETAIL (1)  
SCALE: 1:5 A812



TYPICAL DETAIL @ SHEAR WALL (5)  
SCALE: 1:10 A812



STAIR DETAIL - HANDRAIL EXTENSION AT TOP & BOTTOM (1)  
SCALE: 1:10 A812

THIS DRAWING IS AN INSTRUMENT OF SERVICE, IT IS PROVIDED BY AND IS THE PROPERTY OF GRAZIANI CORAZZA ARCHITECTS INC. THE CONTRACTOR MUST VERIFY AND ACCEPT RESPONSIBILITY FOR ALL DIMENSIONS AND COORDINATE ON SITE AND MUST NOTIFY GRAZIANI CORAZZA ARCHITECTS INC. OF ANY VARIATIONS FROM THE SUPPLIED INFORMATION. GRAZIANI CORAZZA ARCHITECTS INC. IS NOT RESPONSIBLE FOR THE ACCURACY OF SURVEY, STRUCTURAL, MECHANICAL, ELECTRICAL, AND OTHER ENGINEERING INFORMATION SHOWN ON THIS DRAWING. REFER TO THE APPROPRIATE ENGINEERING DRAWINGS BEFORE PROCEEDING WITH THE WORK. CONSTRUCTION MUST COMPLY TO ALL APPLICABLE CODES AND REQUIREMENTS OF THE AUTHORITIES HAVING JURISDICTION. UNLESS OTHERWISE NOTED, NO MODIFICATION HAS BEEN MADE TO THE INFORMATION IN THIS OFFICE IN REGARD TO THE ENVIRONMENTAL CONDITION OF THIS SITE.

THIS DRAWING IS NOT TO BE SCALED. ALL ARCHITECTURAL SYMBOLS INDICATED ON THIS DRAWING ARE GRAPHIC REPRESENTATIONS ONLY.

CONDITIONS FOR ELECTRONIC INFORMATION TRANSFER

ELECTRONIC INFORMATION IS SUPPLIED TO THE OTHER ASSOCIATED FIRMS TO ASSIST THEM IN THE EXECUTION OF THEIR WORK. REVIEW THE RECEIPTED FIRMS MUST DETERMINE THE COMPLETENESS, APPROPRIATENESS, RELIANCE OF THE INFORMATION IN RESPECT TO THEIR PARTICULAR RESPONSIBILITY.

GRAZIANI CORAZZA ARCHITECTS INC. SHALL NOT BE RESPONSIBLE FOR ERRORS, OMISSIONS, INCOMPLETENESS DUE TO LOSS OF INFORMATION IN WHOLE OR PART WHEN INFORMATION IS TRANSFERRED.

TRANSMISSION OF ANY WRITING OR DAMAGE TO THE RECEIVING ELECTRONIC SYSTEM WHEN INFORMATION IS TRANSFERRED.

- | NO. | DATE         | DESCRIPTION                       | BY |
|-----|--------------|-----------------------------------|----|
| 01. | Oct.07.2019  | issued for tender                 | —  |
| 02. | Mar.13.2020  | issued for design coordination #2 | —  |
| 03. | Mar.16.2020  | issued for addendum #2            | —  |
| 04. | Mar.16.2020  | issued for addendum #3            | —  |
| 05. | Aug.24.2020  | issued for addendum #4            | —  |
| 06. | Sept.28.2020 | issued for permit                 | bq |
| 07. | Oct.20.2020  | issued for addendum #5            | —  |
| 08. | Nov.23.2020  | issued for addendum #6            | —  |
| 09. | Dec.14.2020  | issued for addendum #7            | —  |
| 10. | Jan.15.2021  | issued for addendum #8            | —  |
| 11. | Mar.2.2021   | issued for permit                 | bq |
| 12. | Mar.09.2021  | issued for addendum #9            | —  |
| 13. | Mar.10.2021  | issued for addendum #9R           | —  |
| 14. | Mar.26.2021  | issued for progress               | —  |
| 15. | May.14.2021  | issued for Site Instruction #1    | —  |
| 16. | June.15.2021 | issued for Site Instruction #2    | —  |
| 17. | July.7.2021  | re-issued for permit              | bq |
| 18. | July.15.2021 | issued for Site Instruction #3    | bq |
| 19. | July.23.2021 | issued for Site Instruction #2    | —  |

01. Apr.19.2021 issued for client bq

issued for revisions

**GRAZIANI CORAZZA ARCHITECTS**

1320 SHEARWATER DRIVE, SUITE 103 MISSISSAUGA, ONTARIO L4W 1C3  
905.709.7201 FAX 905.709.7202 WWW.GCA-ARCHITECTS.COM

**ATTAR & PALLESCHI DRIVE**

**BRAMPTON** **ONTARIO**

PROJECT ARCHITECT: **R. GRAZIANI**

ASSISTANT DESIGNER: **R. LINCOLN**

DRAWN BY: **G.C./C.M.B.**

CHECKED BY: **D. BIASE/G. COLANGELO**

PILOT DATE: **JUL.26.2021**

JOB # **1331.15**

**Typical Details**

as noted A812

TITLEBLOCK SIZE: 915 x 1200