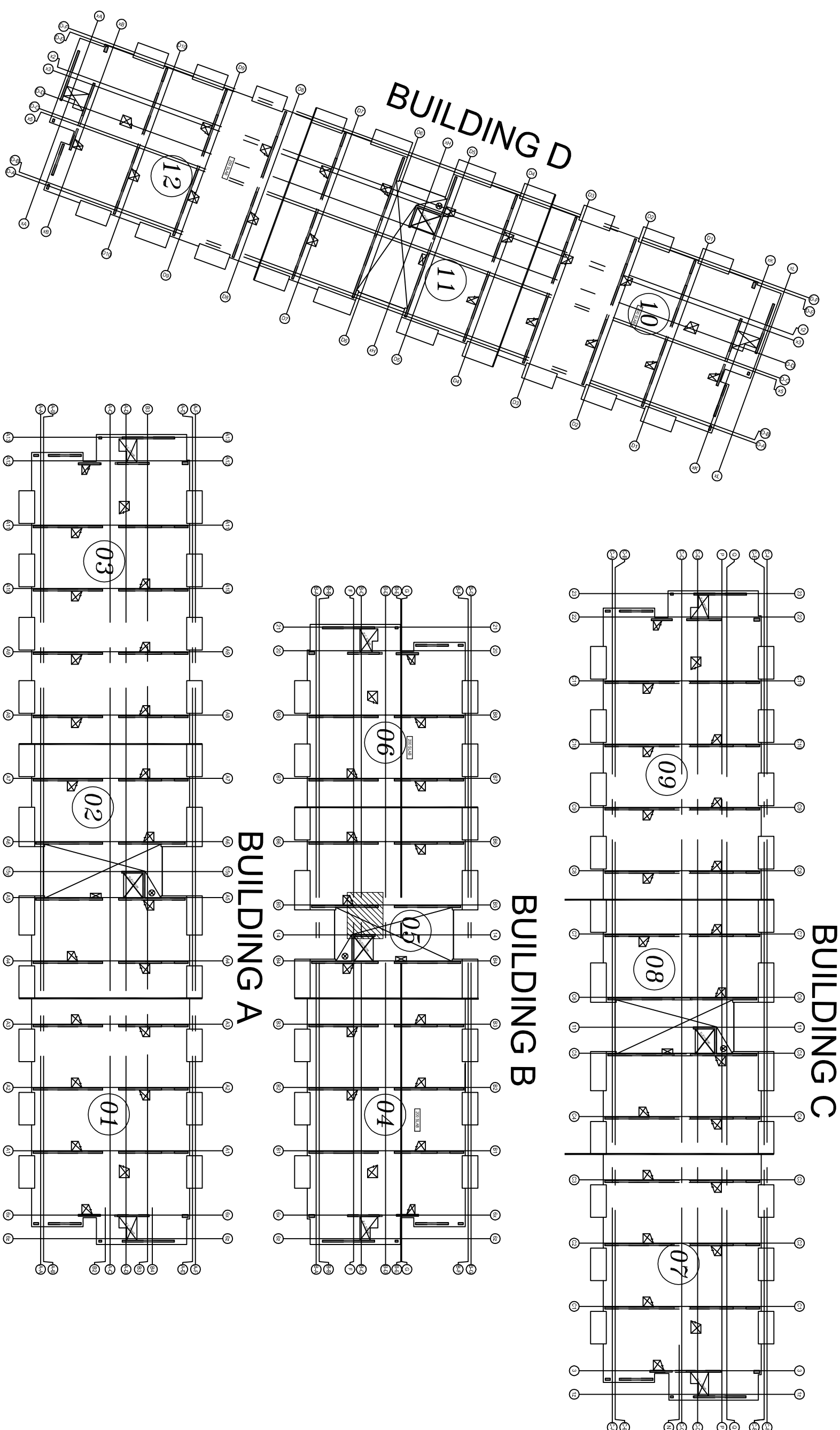


DRAWING REVIEW	
<p>This review of this drawing does not in any way relieve the contractor of responsibility for its accuracy or for compliance with the contract documents.</p>	
No comment	<input checked="" type="checkbox"/> See comment
Amend & Resubmit	<input type="checkbox"/> Rejected <input type="checkbox"/> See Remarks
Submission No. <u>19066</u> Project No. <u>MB</u> By <u>15 Oct 2021</u> Date	

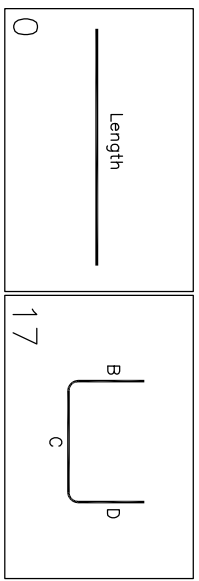
JABLONSKY, AST AND PARTNERS
Consulting Engineers
1129 Leslie Street Don Mills, Ont. M3C 2K5

NOTES		4. COMPRESSION LAP SPlice		5. TENSION LAP SPlice (L _S) & DEVELOPMENT LENGTH (L _d)	
1. ALL STEEL TO BE GRADE 400W		BAR SIZE		BAR SIZE	
2. STRENGTH OF CONCRETE		STANDARD LAP (mm)		L _S (mm) & L _d (mm) FOR F _{yk} =35	
35MPa – INTERIOR COLUMNS & WALLS		10M	300	L _S	L _d
		15M	440	18d	35d
		20M	590	24d	42d
		25M	730	30d	52d
		30M	880	36d	62d
		35M	1030	42d	70d
3. CONCRETE COVER:					
VERTICALS	-- 25mm				



STANDARD LABEL FORMAT		BEST LABEL FORMAT	
7 B15M X 3660 DATE ITEM QUANTITY		7 B15M X 15101 DATE ITEM QTY QUANTITY	
CHANGES TO BE MADE ALL COMPANIES APPEARS WILL BE ASSUMED CORRECT AND APPROVED AS IS UNLESS COMMENTED ON THE APPROVAL DIMENS		CHANGES TO BE MADE ALL COMPANIES APPEARS WILL BE ASSUMED CORRECT AND APPROVED AS IS UNLESS COMMENTED ON THE APPROVAL DIMENS	

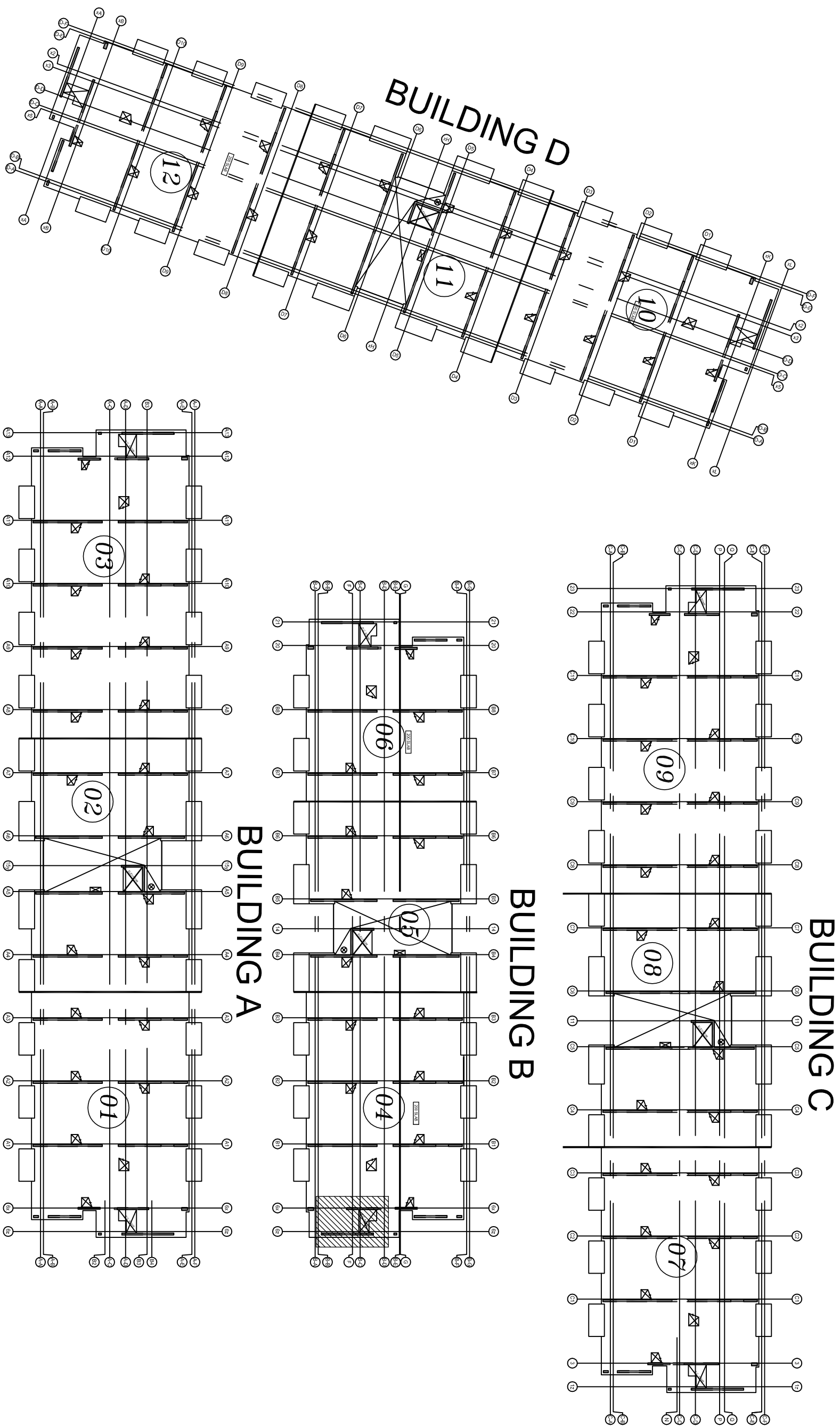
[illegible]

[illegible]

This review of this drawing does not in any way relieve the contractor of responsibility for its accuracy or for compliance with the contract documents.

✓	No comment	See comment
	Amend & Resubmit	Rejected See Remarks

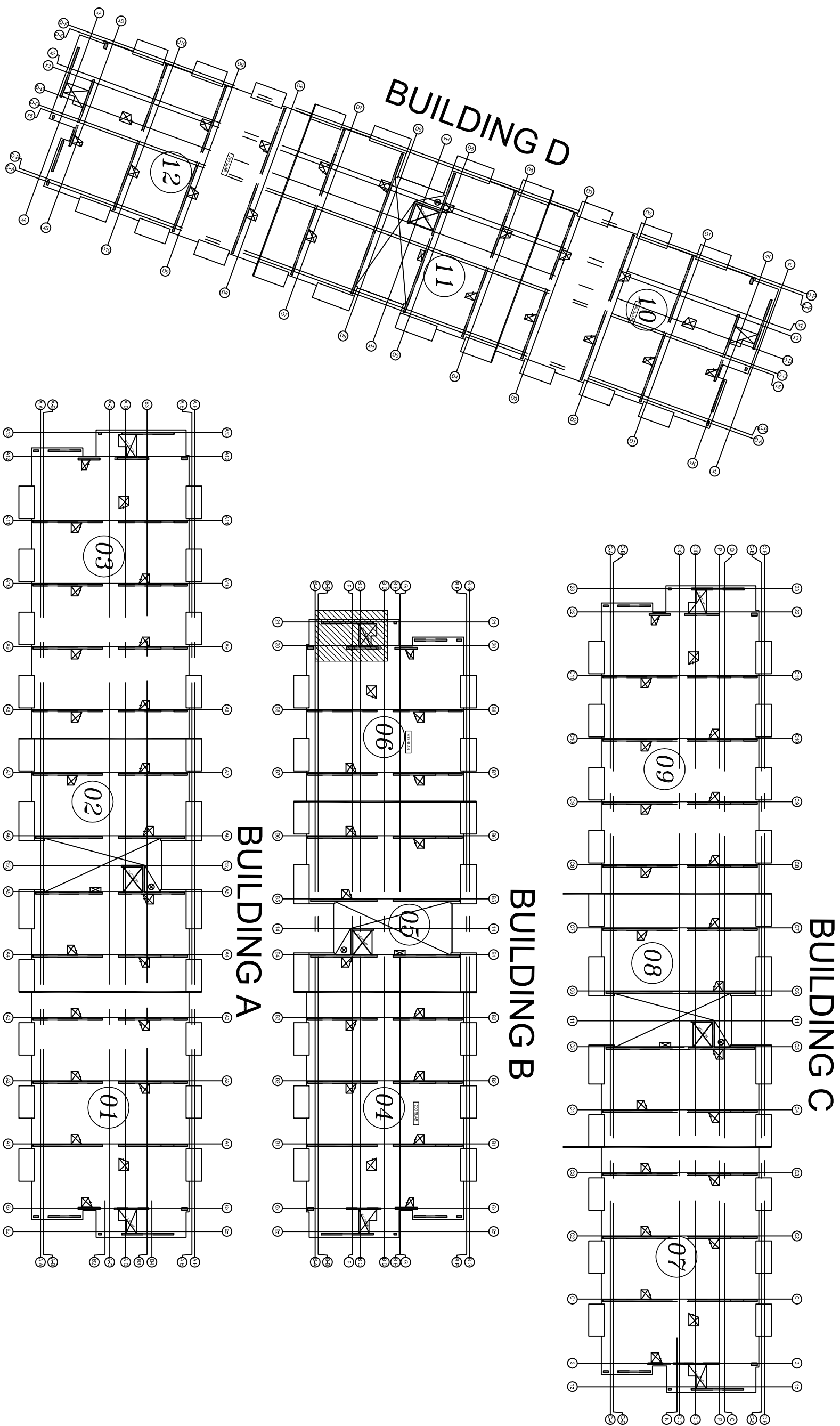
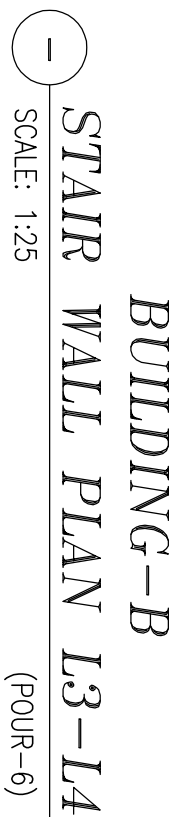
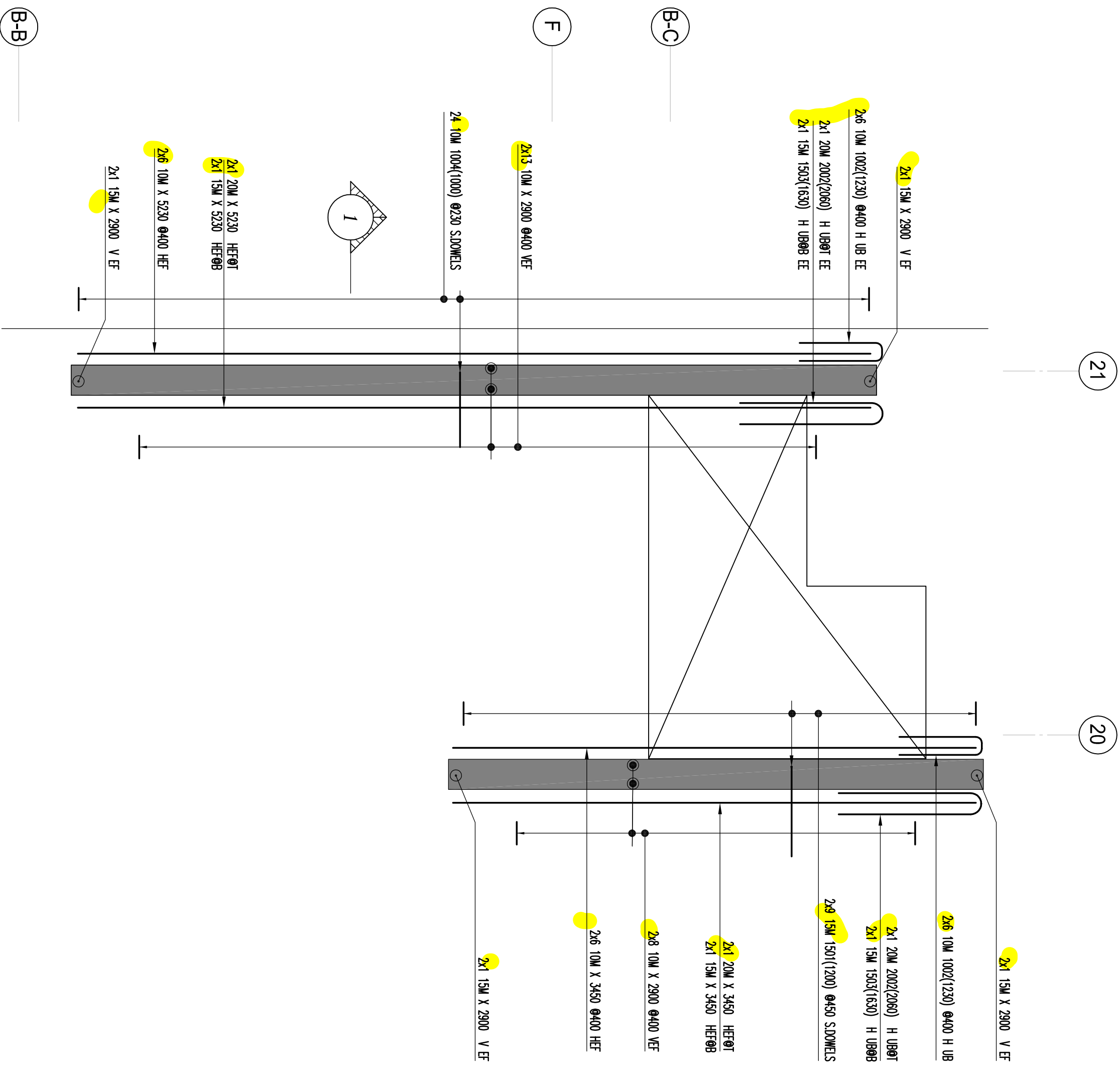
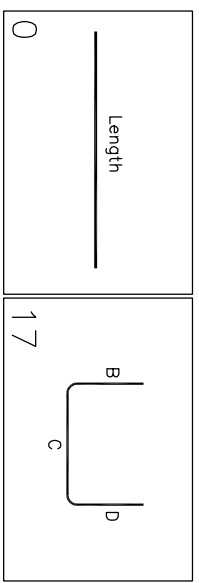
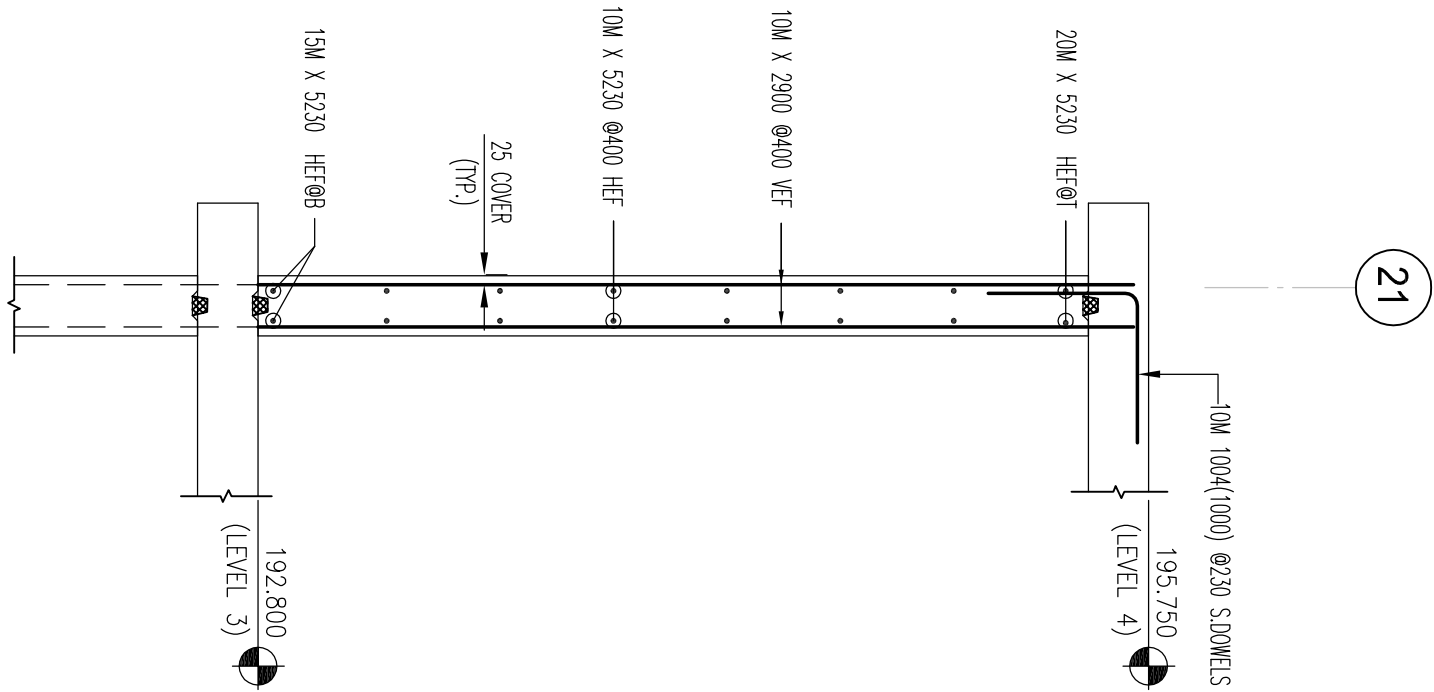
SCALE: 1:25



BAR SIZE	STANDARD LAP (mm)
10M	300
15M	440
20M	590
25M	730
30M	880
35M	1030

TENSION APPLIED (FOR WALL OR BAR SIZE)	TENSION APPLIED (L) & DEVELOPMENT LENGTH (L _d) (FOR WALL OR BAR SIZE)					
	f _c = 25		f _c = 30		f _c = 35	
	L	L _d	L	L _d	L	L _d
10M	450	380	450	350	420	320
15M	740	570	670	520	620	480
20M	980	750	880	690	830	640
25M	1530	1170	1390	1070	1290	990
30M	1830	1410	1670	1280	1550	1190
35M	2130	1640	1950	1500	1800	1390

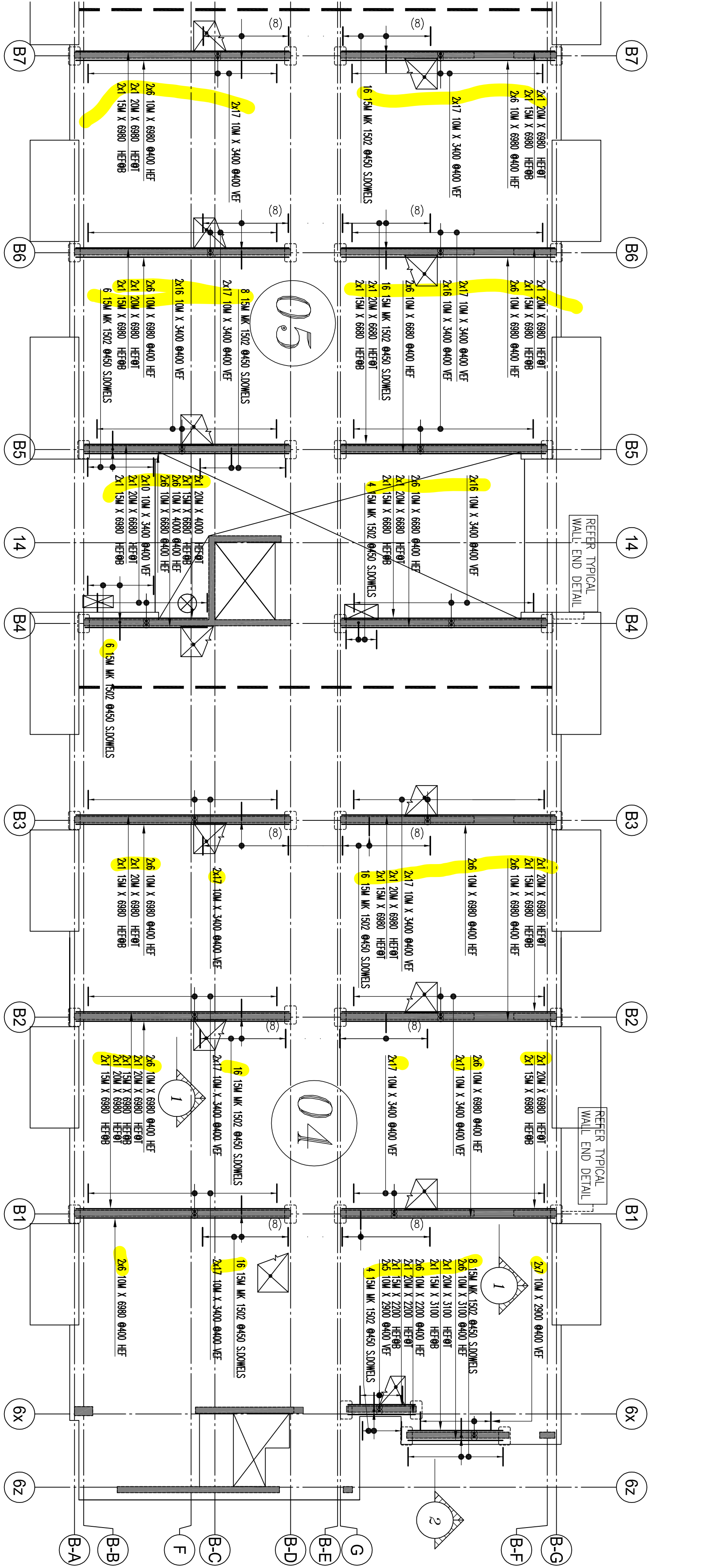
<p> <small>* ELEVATION AND DIMENSIONS SHOWN ARE FOR VERIFICATION PURPOSES ONLY AND ARE NOT TO BE USED FOR CONSTRUCTION PURPOSES.</small> <small>AS IS UNLESS COMMENTED ON THE APPROVAL DRAWING</small> </p>		<p> <small>LEGEND</small> 1.00 = ALUMINUM 2.00 = BRASS 3.00 = BRASS 4.00 = BRASS 5.00 = BRASS 6.00 = BRASS 7.00 = BRASS 8.00 = BRASS 9.00 = BRASS 10.00 = BRASS 11.00 = BRASS 12.00 = BRASS 13.00 = BRASS 14.00 = BRASS 15.00 = BRASS 16.00 = BRASS 17.00 = BRASS 18.00 = BRASS 19.00 = BRASS 20.00 = BRASS 21.00 = BRASS 22.00 = BRASS 23.00 = BRASS 24.00 = BRASS 25.00 = BRASS 26.00 = BRASS 27.00 = BRASS 28.00 = BRASS 29.00 = BRASS 30.00 = BRASS 31.00 = BRASS 32.00 = BRASS 33.00 = BRASS 34.00 = BRASS 35.00 = BRASS 36.00 = BRASS 37.00 = BRASS 38.00 = BRASS 39.00 = BRASS 40.00 = BRASS 41.00 = BRASS 42.00 = BRASS 43.00 = BRASS 44.00 = BRASS 45.00 = BRASS 46.00 = BRASS 47.00 = BRASS 48.00 = BRASS 49.00 = BRASS 50.00 = BRASS 51.00 = BRASS 52.00 = BRASS 53.00 = BRASS 54.00 = BRASS 55.00 = BRASS 56.00 = BRASS 57.00 = BRASS 58.00 = BRASS 59.00 = BRASS 60.00 = BRASS 61.00 = BRASS 62.00 = BRASS 63.00 = BRASS 64.00 = BRASS 65.00 = BRASS 66.00 = BRASS 67.00 = BRASS 68.00 = BRASS 69.00 = BRASS 70.00 = BRASS 71.00 = BRASS 72.00 = BRASS 73.00 = BRASS 74.00 = BRASS 75.00 = BRASS 76.00 = BRASS 77.00 = BRASS 78.00 = BRASS 79.00 = BRASS 80.00 = BRASS 81.00 = BRASS 82.00 = BRASS 83.00 = BRASS 84.00 = BRASS 85.00 = BRASS 86.00 = BRASS 87.00 = BRASS 88.00 = BRASS 89.00 = BRASS 90.00 = BRASS 91.00 = BRASS 92.00 = BRASS 93.00 = BRASS 94.00 = BRASS 95.00 = BRASS 96.00 = BRASS 97.00 = BRASS 98.00 = BRASS 99.00 = BRASS 100.00 = BRASS 101.00 = BRASS 102.00 = BRASS 103.00 = BRASS 104.00 = BRASS 105.00 = BRASS 106.00 = BRASS 107.00 = BRASS 108.00 = BRASS 109.00 = BRASS 110.00 = BRASS 111.00 = BRASS 112.00 = BRASS 113.00 = BRASS 114.00 = BRASS 115.00 = BRASS 116.00 = BRASS 117.00 = BRASS 118.00 = BRASS 119.00 = BRASS 120.00 = BRASS 121.00 = BRASS 122.00 = BRASS 123.00 = BRASS 124.00 = BRASS 125.00 = BRASS 126.00 = BRASS 127.00 = BRASS 128.00 = BRASS 129.00 = BRASS 130.00 = BRASS 131.00 = BRASS 132.00 = BRASS 133.00 = BRASS 134.00 = BRASS 135.00 = BRASS 136.00 = BRASS 137.00 = BRASS 138.00 = BRASS 139.00 = BRASS 140.00 = BRASS 141.00 = BRASS 142.00 = BRASS 143.00 = BRASS 144.00 = BRASS 145.00 = BRASS 146.00 = BRASS 147.00 = BRASS 148.00 = BRASS 149.00 = BRASS 150.00 = BRASS 151.00 = BRASS 152.00 = BRASS 153.00 = BRASS 154.00 = BRASS 155.00 = BRASS 156.00 = BRASS 157.00 = BRASS 158.00 = BRASS 159.00 = BRASS 160.00 = BRASS 161.00 = BRASS 162.00 = BRASS 163.00 = BRASS 164.00 = BRASS 165.00 = BRASS 166.00 = BRASS 167.00 = BRASS 168.00 = BRASS 169.00 = BRASS 170.00 = BRASS 171.00 = BRASS 172.00 = BRASS 173.00 = BRASS 174.00 = BRASS 175.00 = BRASS 176.00 = BRASS 177.00 = BRASS 178.00 = BRASS 179.00 = BRASS 180.00 = BRASS 181.00 = BRASS 182.00 = BRASS 183.00 = BRASS 184.00 = BRASS 185.00 = BRASS 186.00 = BRASS 187.00 = BRASS 188.00 = BRASS 189.00 = BRASS 190.00 = BRASS 191.00 = BRASS 192.00 = BRASS 193.00 = BRASS 194.00 = BRASS 195.00 = BRASS 196.00 = BRASS 197.00 = BRASS 198.00 = BRASS 199.00 = BRASS 200.00 = BRASS 201.00 = BRASS 202.00 = BRASS 203.00 = BRASS 204.00 = BRASS 205.00 = BRASS 206.00 = BRASS 207.00 = BRASS 208.00 = BRASS 209.00 = BRASS 210.00 = BRASS 211.00 = BRASS 212.00 = BRASS 213.00 = BRASS 214.00 = BRASS 215.00 = BRASS 216.00 = BRASS 217.00 = BRASS 218.00 = BRASS 219.00 = BRASS 220.00 = BRASS 221.00 = BRASS 222.00 = BRASS 223.00 = BRASS 224.00 = BRASS 225.00 = BRASS 226.00 = BRASS 227.00 = BRASS 228.00 = BRASS 229.00 = BRASS 230.00 = BRASS 231.00 = BRASS 232.00 = BRASS 233.00 = BRASS 234.00 = BRASS 235.00 = BRASS 236.00 = BRASS 237.00 = BRASS 238.00 = BRASS 239.00 = BRASS 240.00 = BRASS 241.00 = BRASS 242.00 = BRASS 243.00 = BRASS 244.00 = BRASS 245.00 = BRASS 246.00 = BRASS 247.00 = BRASS 248.00 = BRASS 249.00 = BRASS 250.00 = BRASS 251.00 = BRASS 252.00 = BRASS 253.00 = BRASS 254.00 = BRASS 255.00 = BRASS 256.00 = BRASS 257.00 = BRASS 258.00 = BRASS 259.00 = BRASS 260.00 = BRASS 261.00 = BRASS 262.00 = BRASS 263.00 = BRASS 264.00 = BRASS 265.00 = BRASS 266.00 = BRASS 267.00 = BRASS 268.00 = BRASS 269.00 = BRASS 270.00 = BRASS 271.00 = BRASS 272.00 = BRASS 273.00 = BRASS 274.00 = BRASS 275.00 = BRASS 276.00 = BRASS 277.00 = BRASS 278.00 = BRASS 279.00 = BRASS 280.00 = BRASS 281.00 = BRASS 282.00 = BRASS 283.00 = BRASS 284.00 = BRASS 285.00 = BRASS 286.00 = BRASS 287.00 = BRASS 288.00 = BRASS 289.00 = BRASS 290.00 = BRASS 291.00 = BRASS 292.00 = BRASS 293.00 = BRASS 2</p>	
--	--	---	--

[illegible]

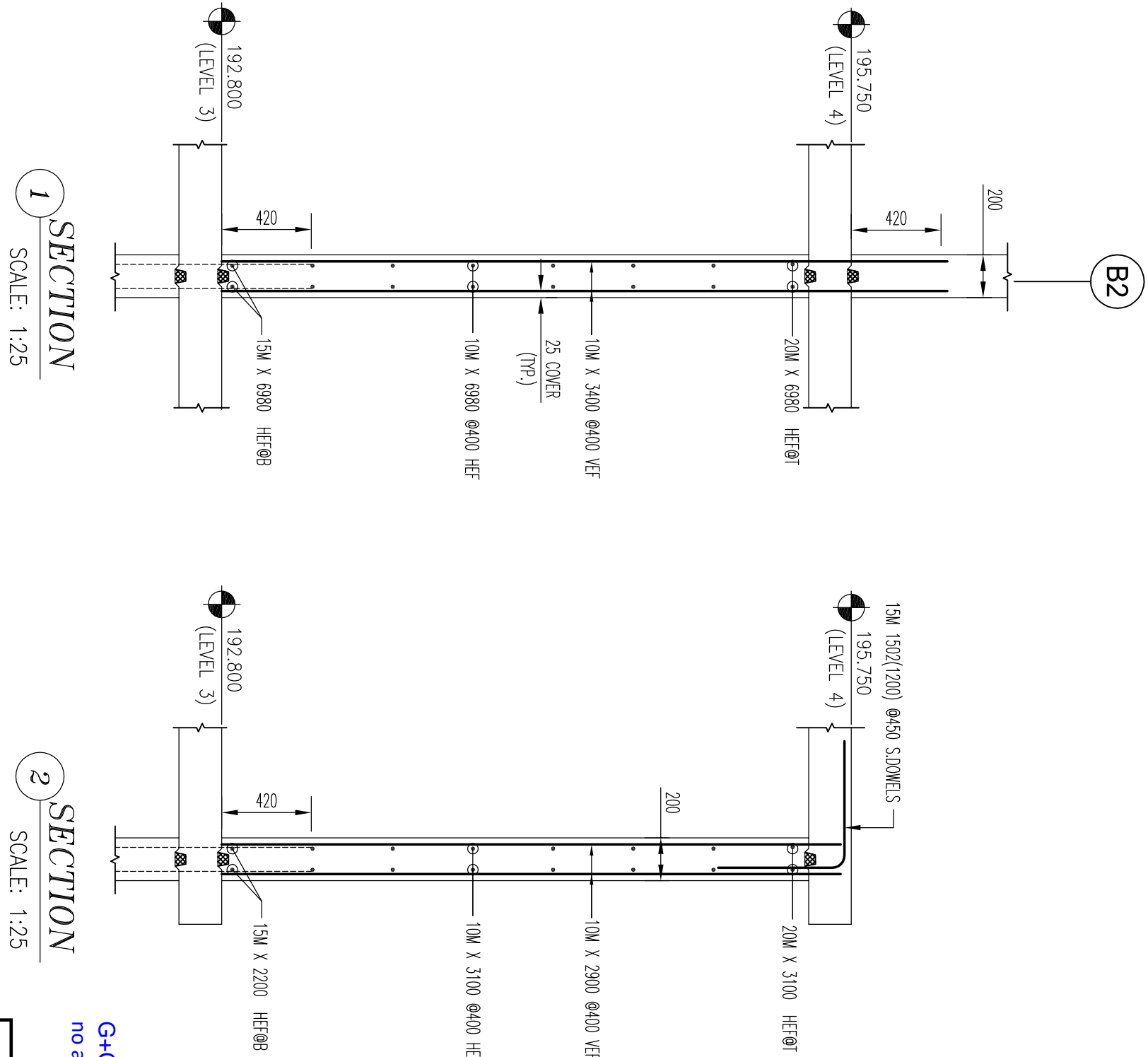
BAR SIZE	STANDARD LAP (mm)
10M	300
15M	440
20M	590
25M	730
30M	880
35M	1030

BAR SIZE	TENSILE STRENGTH (LBS) & DEVELOPMENT (FOR WALL OR PIPE Ld IN CAP OR FIT)						LENGTH (Ld)	
	f _c =25		f _c =30		f _c =35		Ld	Ld
	Ld	Ld	Ld	Ld	Ld	Ld		
10M	490	380	450	350	420	320		
11M	540	420	510	400	470	370		
12M	590	470	560	450	520	480		
14M	780	570	670	620	620	620		
20M	940	750	890	860	830	640		
25M	1530	1170	1390	1070	1250	990		
30M	1830	1410	1670	1290	1550	1190		
35M	2130	1640	1950	1500	1800	1390		

[illegible]



BUILDING-B WALL PLAN
SCALE: 1:100
(FOUR-4 & 5)

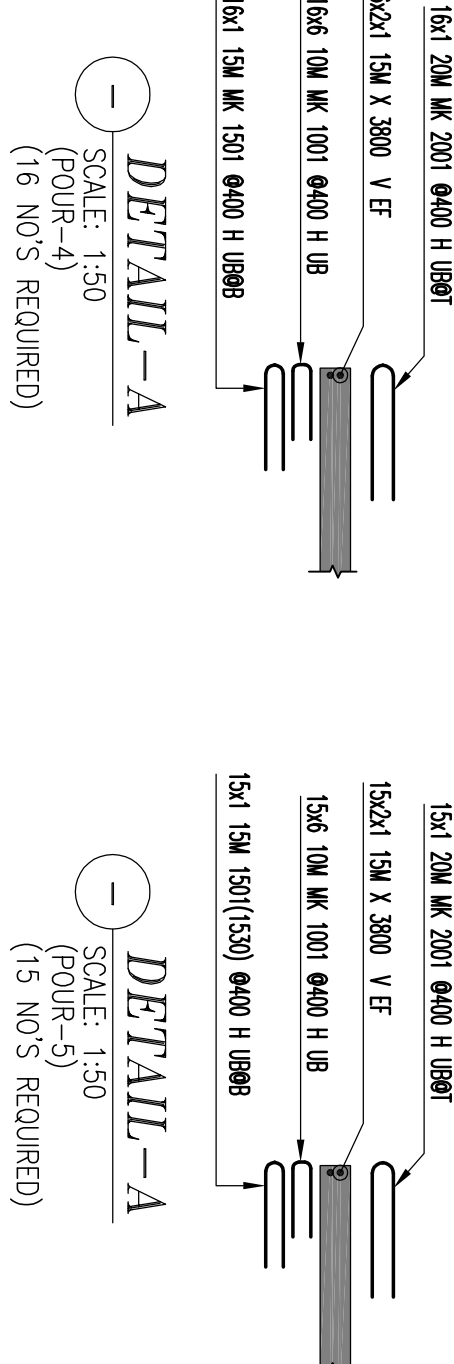


DRAWING REVIEW
This review of this drawing does not in any way relieve the contractor of responsibility for its accuracy or for compliance with the contract documents.

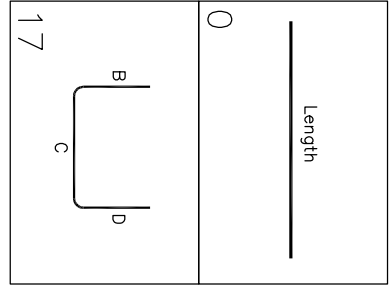
✓ No comment	See comment
Amend &	Reflected
Resubmit	See Remarks

Submission No. **19066**
Project No. **MB**
By **15 Oct 2021**
Date

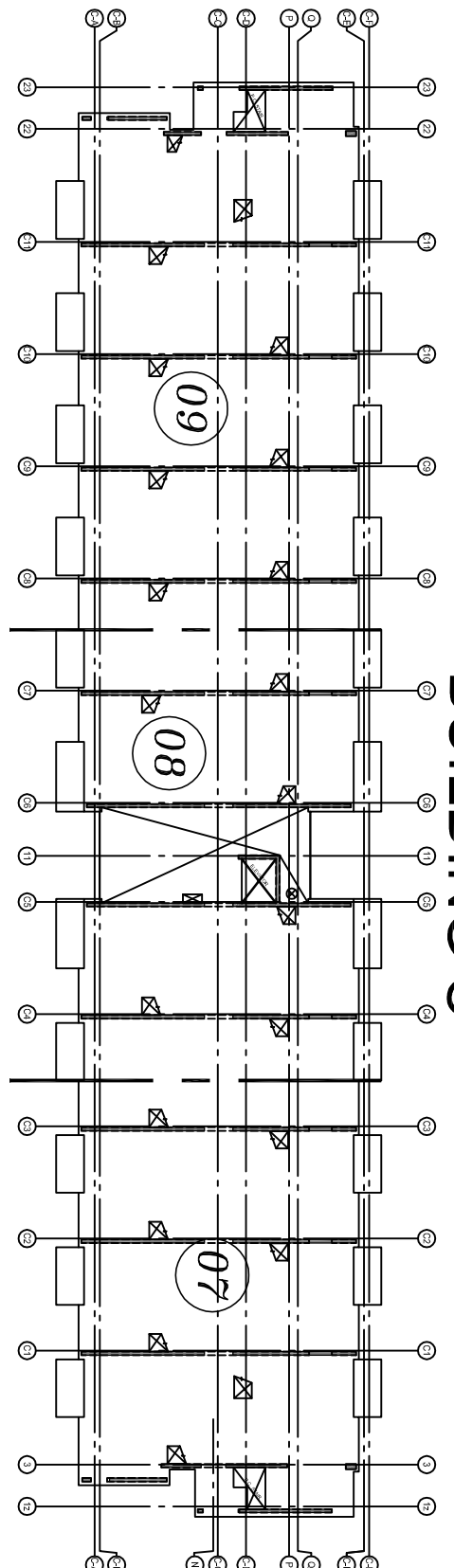
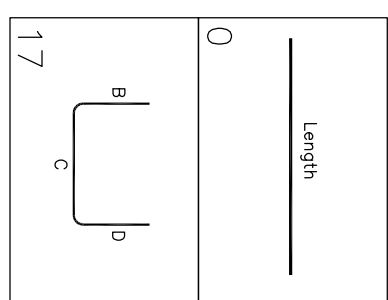
JABLONSKY, AST AND PARTNERS
Consulting Engineers
1129 Leslie Street Don Mills Ont. M3C 2K5



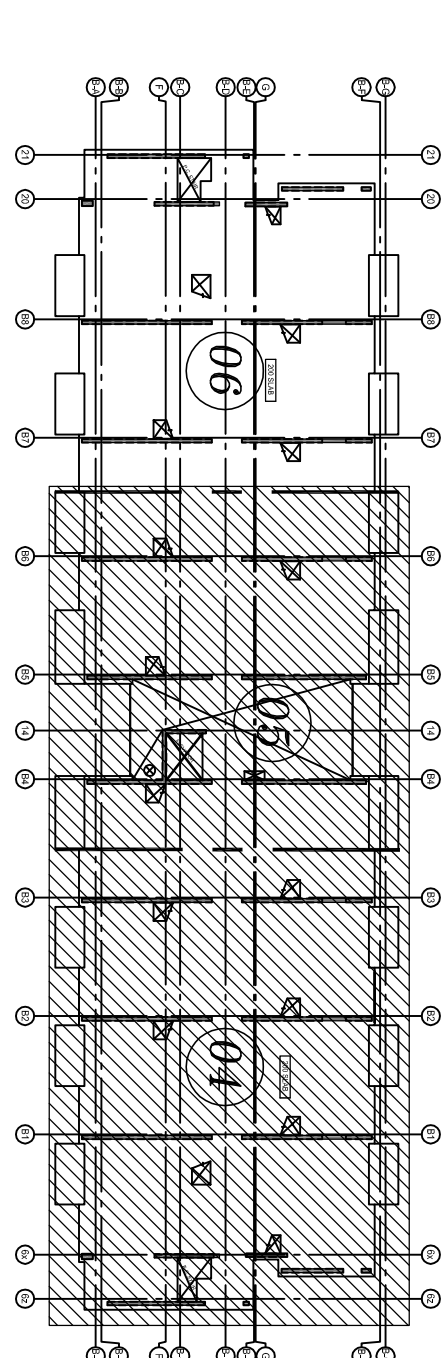
Bar Mark	Qty	Size	Total Length (m)	Unit	Weight (kg)
10M	200	10M	6000	Y	3000
12M	100	12M	3000	Y	1500
16M	50	16M	1500	Y	750
20M	20	20M	600	Y	300
24M	10	24M	300	Y	150
28M	5	28M	150	Y	75
32M	2	32M	60	Y	30
36M	1	36M	30	Y	15
40M	1	40M	15	Y	7.5
44M	1	44M	7.5	Y	3.75
48M	1	48M	3.75	Y	1.875
52M	1	52M	1.875	Y	0.9375
56M	1	56M	0.9375	Y	0.46875
60M	1	60M	0.46875	Y	0.234375
64M	1	64M	0.234375	Y	0.1171875
68M	1	68M	0.1171875	Y	0.05859375
72M	1	72M	0.05859375	Y	0.029296875
76M	1	76M	0.029296875	Y	0.0146484375
80M	1	80M	0.0146484375	Y	0.00732421875
84M	1	84M	0.00732421875	Y	0.003662109375
88M	1	88M	0.003662109375	Y	0.0018310546875
92M	1	92M	0.0018310546875	Y	0.00091552734375
96M	1	96M	0.00091552734375	Y	0.000457763671875
100M	1	100M	0.000457763671875	Y	0.0002288818359375
104M	1	104M	0.0002288818359375	Y	0.00011444091796875
108M	1	108M	0.00011444091796875	Y	0.000057220458984375
112M	1	112M	0.000057220458984375	Y	0.0000286102294921875
116M	1	116M	0.0000286102294921875	Y	0.00001430511474609375
120M	1	120M	0.00001430511474609375	Y	0.000007152557373046875
124M	1	124M	0.000007152557373046875	Y	0.0000035762786865234375
128M	1	128M	0.0000035762786865234375	Y	0.00000178813934326171875
132M	1	132M	0.00000178813934326171875	Y	0.000000894069671630859375
136M	1	136M	0.000000894069671630859375	Y	0.0000004470348358154296875
140M	1	140M	0.0000004470348358154296875	Y	0.00000022351741790771484375
144M	1	144M	0.00000022351741790771484375	Y	0.000000111758708953857421875
148M	1	148M	0.000000111758708953857421875	Y	0.0000000558793544769287109375
152M	1	152M	0.0000000558793544769287109375	Y	0.00000002793967723846435546875



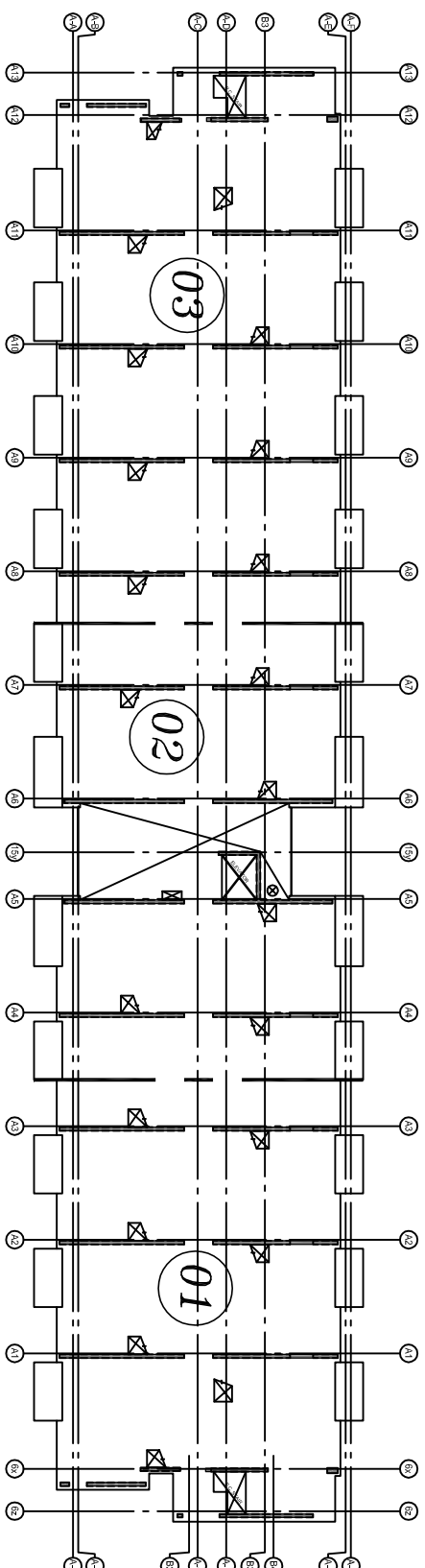
Bar Mark	Qty	Size	Total Length (m)	Unit	Weight (kg)
10M	200	10M	6000	Y	3000
12M	100	12M	3000	Y	1500
16M	50	16M	1500	Y	750
20M	20	20M	600	Y	300
24M	10	24M	300	Y	150
28M	5	28M	150	Y	75
32M	2	32M	60	Y	30
36M	1	36M	30	Y	15
40M	1	40M	15	Y	7.5
44M	1	44M	7.5	Y	3.75
48M	1	48M	3.75	Y	1.875
52M	1	52M	1.875	Y	0.9375
56M	1	56M	0.9375	Y	0.46875
60M	1	60M	0.46875	Y	0.234375
64M	1	64M	0.234375	Y	0.1171875
68M	1	68M	0.1171875	Y	0.05859375
72M	1	72M	0.05859375	Y	0.029296875
76M	1	76M	0.029296875	Y	0.0146484375
80M	1	80M	0.0146484375	Y	0.00732421875
84M	1	84M	0.00732421875	Y	0.003662109375
88M	1	88M	0.003662109375	Y	0.0018310546875
92M	1	92M	0.0018310546875	Y	0.00091552734375
96M	1	96M	0.00091552734375	Y	0.000457763671875
100M	1	100M	0.000457763671875	Y	0.0002288818359375
104M	1	104M	0.0002288818359375	Y	0.00011444091796875
108M	1	108M	0.00011444091796875	Y	0.000057220458984375
112M	1	112M	0.000057220458984375	Y	0.0000286102294921875
116M	1	116M	0.0000286102294921875	Y	0.00001430511474609375
120M	1	120M	0.00001430511474609375	Y	0.000007152557373046875
124M	1	124M	0.000007152557373046875	Y	0.0000035762786865234375
128M	1	128M	0.0000035762786865234375	Y	0.00000178813934326171875
132M	1	132M	0.00000178813934326171875	Y	0.000000894069671630859375
136M	1	136M	0.000000894069671630859375	Y	0.0000004470348358154296875
140M	1	140M	0.0000004470348358154296875	Y	0.00000022351741790771484375
144M	1	144M	0.00000022351741790771484375	Y	0.000000111758708953857421875
148M	1	148M	0.000000111758708953857421875	Y	0.0000000558793544769287109375
152M	1	152M	0.0000000558793544769287109375	Y	0.00000002793967723846435546875



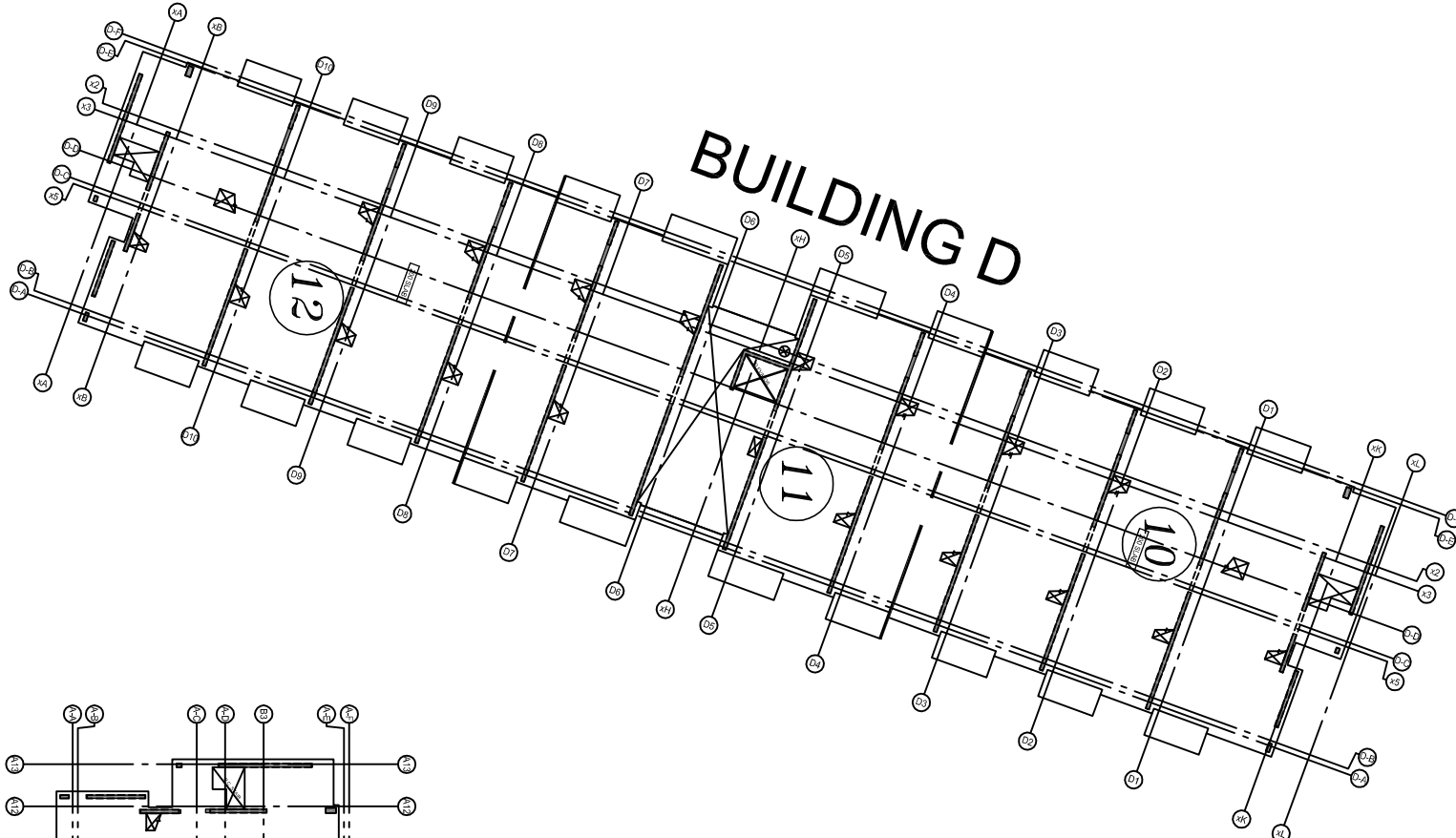
BUILDING C



BUILDING B



BUILDING A



BUILDING D

NOTES

1. ALL STEEL TO BE GRADE 400W
2. STRENGTH OF CONCRETE 35MPa – INTERIOR COLUMNS & WALLS
3. CONCRETE COVER: – – 25mm

BAR SIZE	STANDARD LAP (mm)
10M	300
15M	440
20M	590
25M	730
30M	880
35M	1030

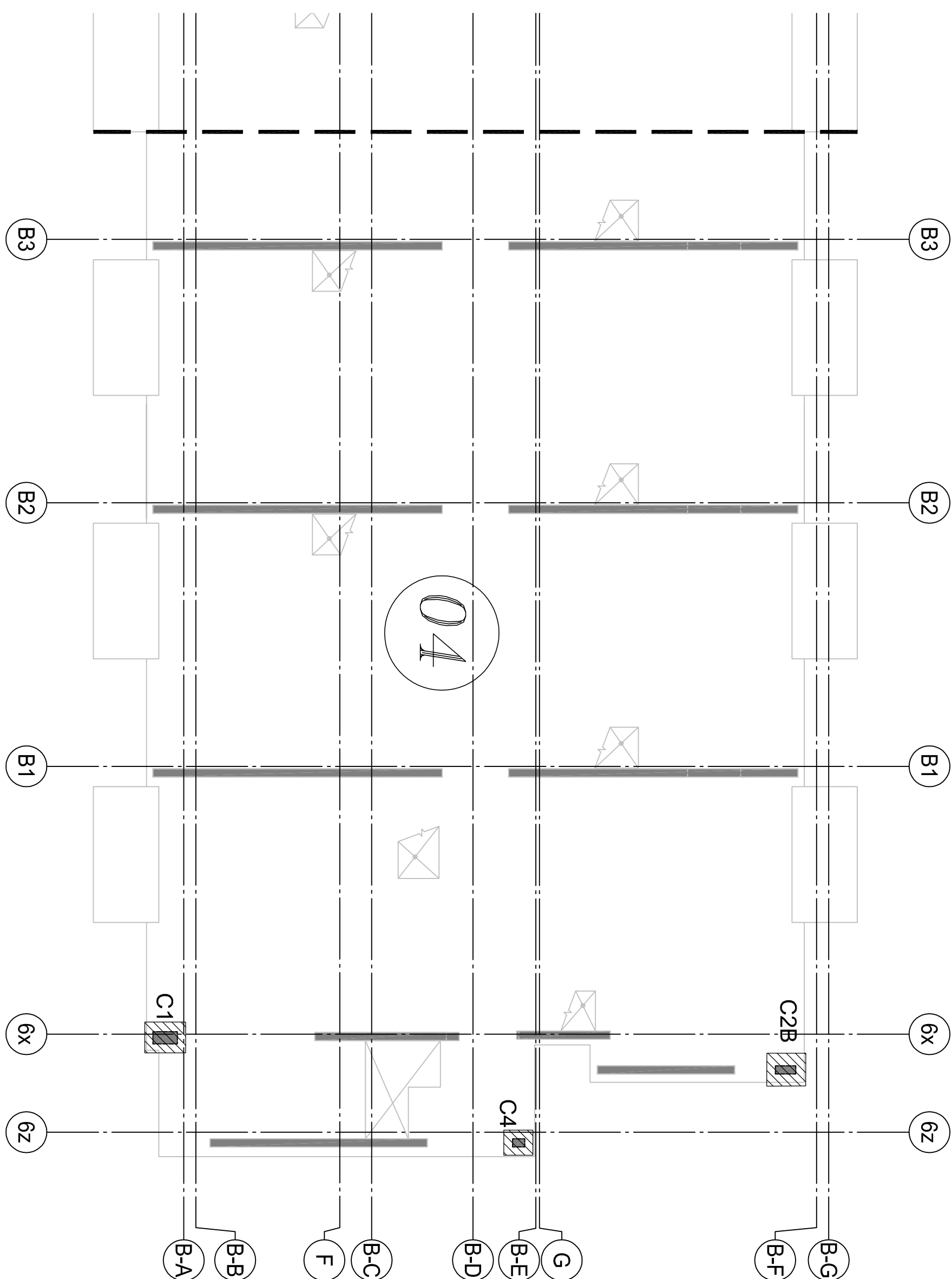
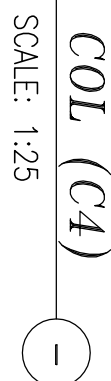
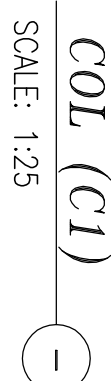
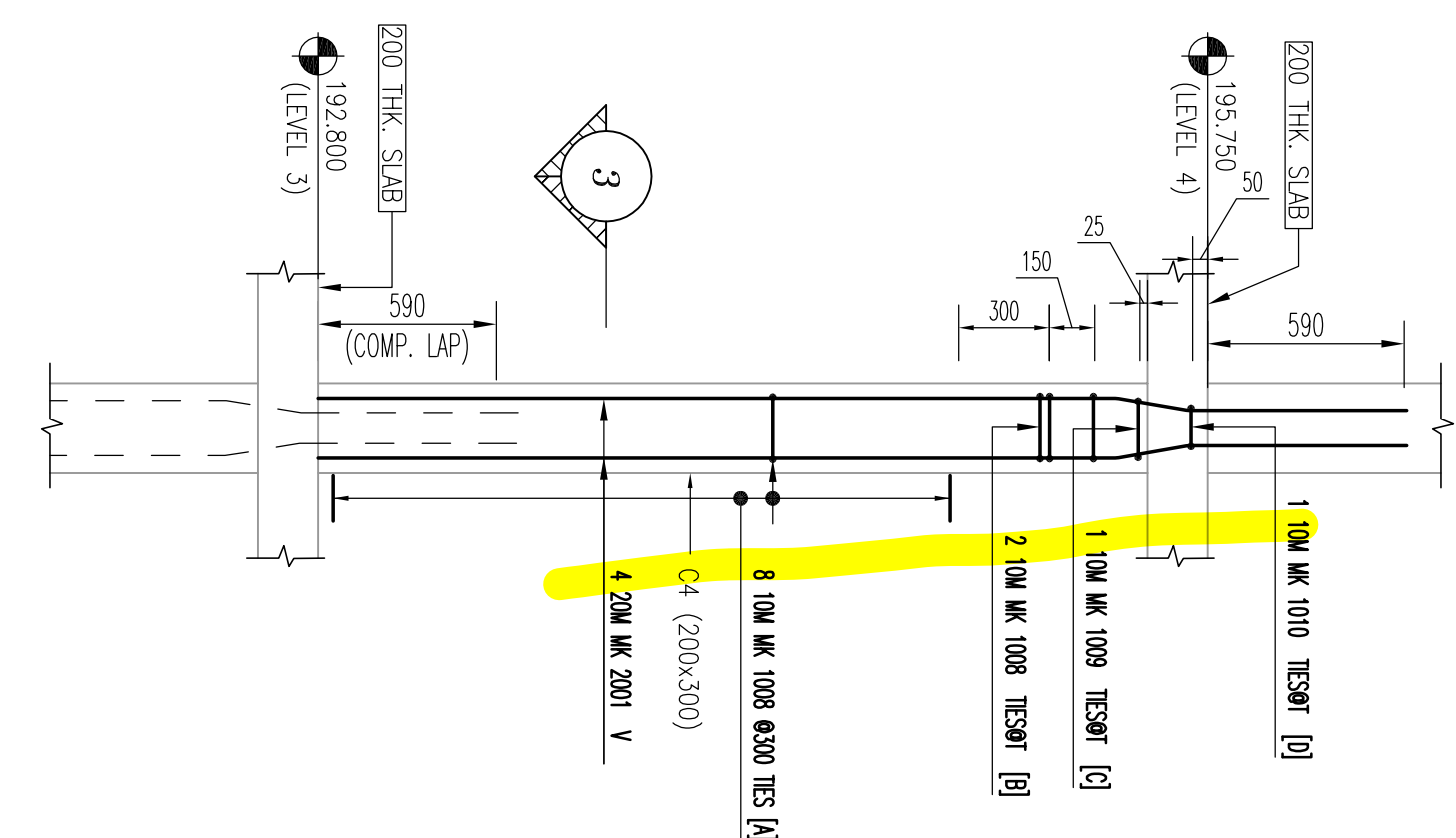
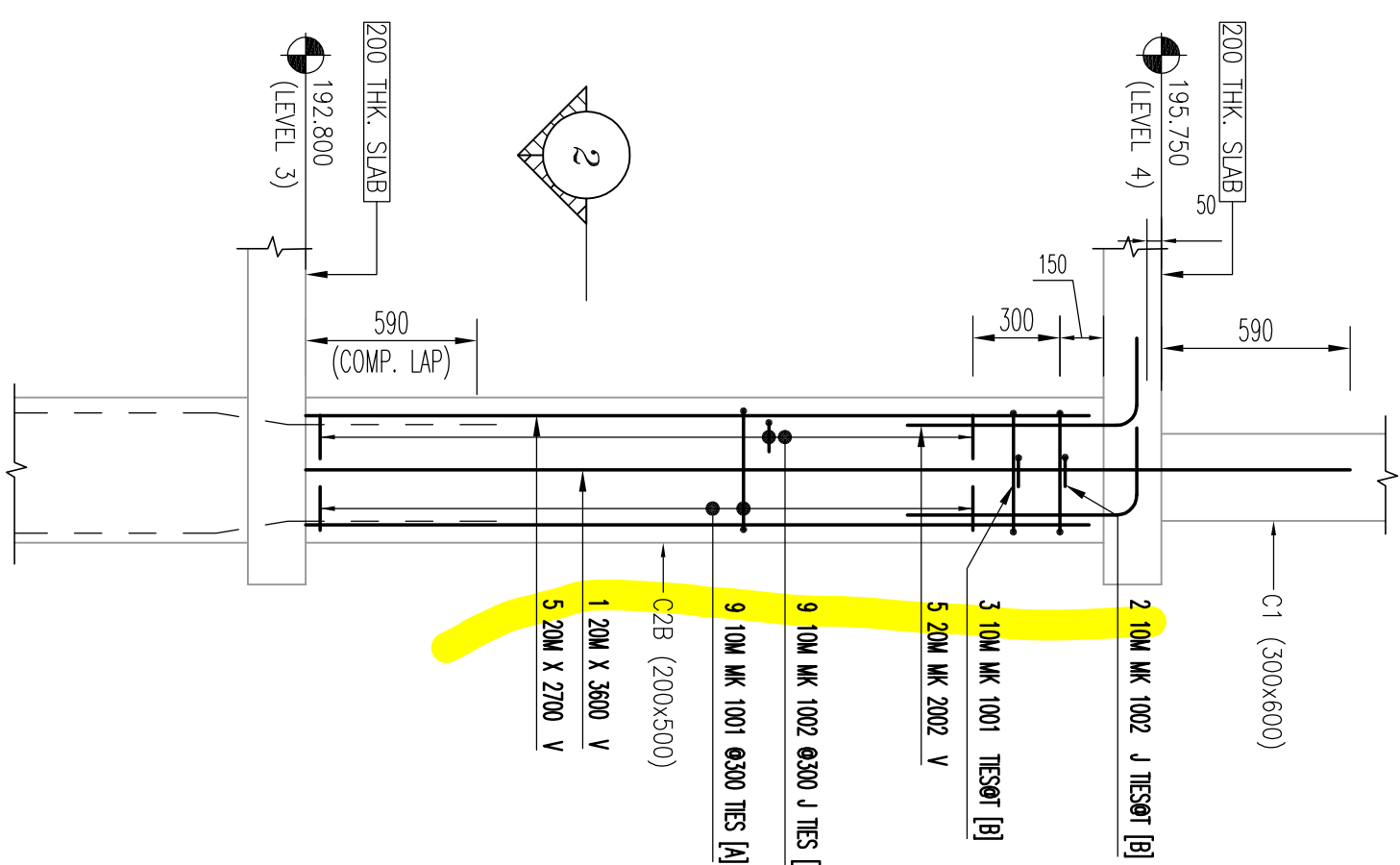
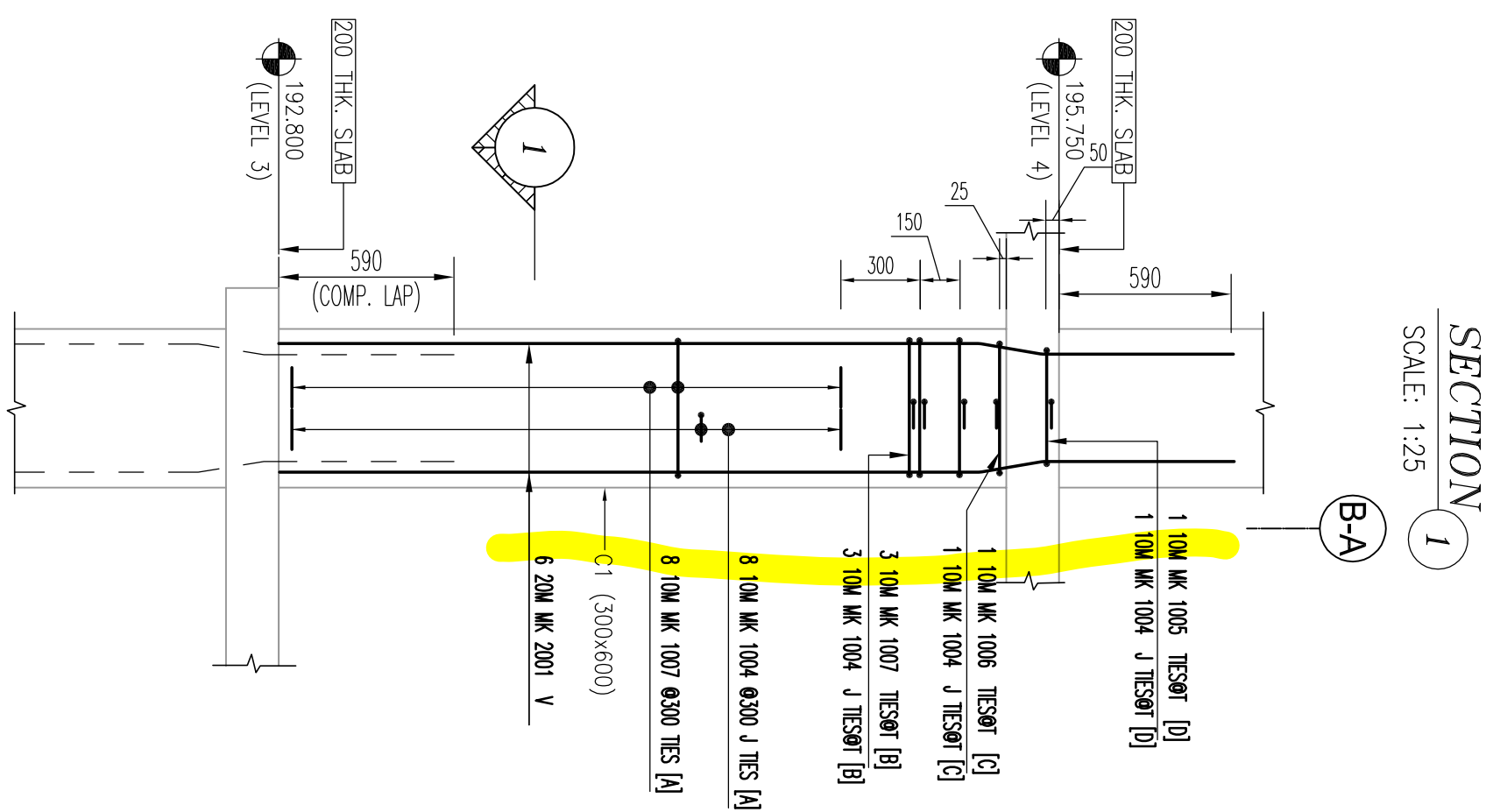
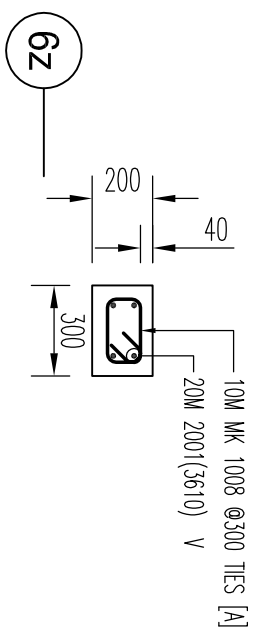
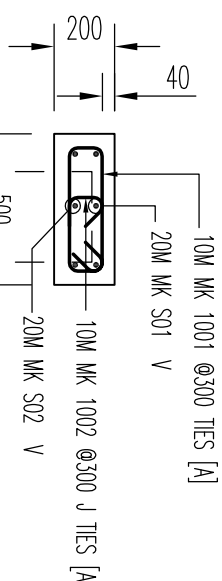
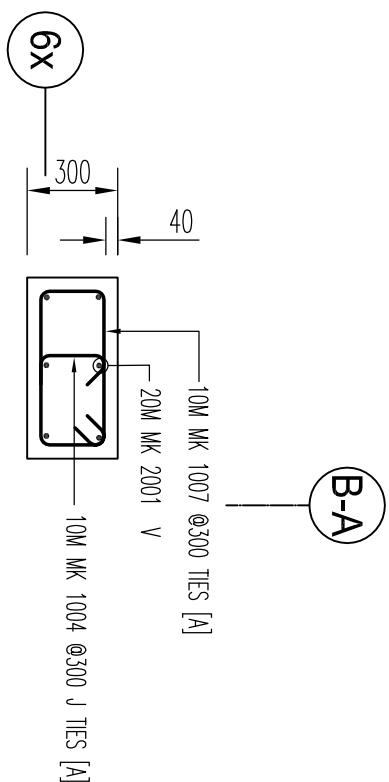
BAR SIZE	L.S	L.d	L.S	L.d	L.S	L.d
10M	490	380	450	350	420	320
15M	740	570	670	520	620	480
20M	980	750	890	690	830	640
25M	1230	940	1070	830	990	790
30M	1480	1130	1290	1000	1190	990
35M	1730	1320	1550	1190	1390	1190

• ELEVATIONS AND DIMENSIONS SHOWN ARE FOR VERIFICATION PURPOSES ONLY AND ARE NOT TO BE USED FOR CONSTRUCTION AND APPROVED AS SUCH. CONSULT THE ARCHITECT FOR ANY CHANGES.

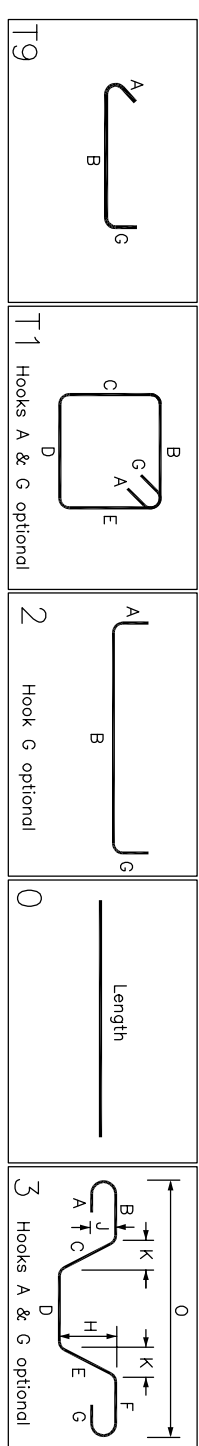
LEGEND	SYMBOL	DESCRIPTION
1. ALL STEEL TO BE GRADE 400W	1	1. ALL STEEL TO BE GRADE 400W
2. STRENGTH OF CONCRETE 35MPa	2	2. STRENGTH OF CONCRETE 35MPa
3. CONCRETE COVER: – – 25mm	3	3. CONCRETE COVER: – – 25mm
4. REINFORCEMENT LAYERS	4	4. REINFORCEMENT LAYERS
5. REINFORCEMENT LAYERS	5	5. REINFORCEMENT LAYERS
6. REINFORCEMENT LAYERS	6	6. REINFORCEMENT LAYERS
7. REINFORCEMENT LAYERS	7	7. REINFORCEMENT LAYERS
8. REINFORCEMENT LAYERS	8	8. REINFORCEMENT LAYERS
9. REINFORCEMENT LAYERS	9	9. REINFORCEMENT LAYERS
10. REINFORCEMENT LAYERS	10	10. REINFORCEMENT LAYERS
11. REINFORCEMENT LAYERS	11	11. REINFORCEMENT LAYERS
12. REINFORCEMENT LAYERS	12	12. REINFORCEMENT LAYERS

ISSUE	FOR APPROVAL	DATE	BY
1	MANSTEEL, REBAR	OCT/14/21	JJ
2	REBAR		
3			
4			
5			
6			
7			
8			
9			
10			
11			
12			

PROJECT	FORSTSIDE TOWNHOUSES –BRAIMPTON, ON
CUSTOMER	ROYAL PINE HOMES
DESIGNED BY	JJ
CHECKED BY	JJ
DATE	15 Oct 2021
SCALE	AS SHOWN
DRAWING NO.	R13.7



Bioscience Resource Project: Unit 13 - Life on Earth													
Strata	Age	Substratum	Life	Plant	Animal	Plant	Animal	Plant	Animal	Plant	Animal	Plant	Animal
1004	13,000	460 ft	100	200									
1003	13,000	250 ft	100	150	140	120							
1002	11,000	840 ft	100	200									
1001	11,000	100	100	120	200	120							
1000	11,000	100	100	120	200	120							
1005	11,000	150 ft	100	40	100	100							
1006	11,000	150 ft	100	40	200	440	200						
1007	11,000	160 ft	100	50	250	50	200						
1008	11,000	160 ft	100	50	250	50	200						
1009	11,000	200 ft	100	50	250	50	200						
1010	11,000	250 ft	100	50	250	50	200						
1011	10,000	300 ft	100	50	250	50	200						
1012	10,000	350 ft	100	50	250	50	200						
1013	10,000	400 ft	100	50	250	50	200						
1014	10,000	450 ft	100	50	250	50	200						
1015	10,000	500 ft	100	50	250	50	200						
1016	10,000	550 ft	100	50	250	50	200						
1017	10,000	600 ft	100	50	250	50	200						
1018	10,000	650 ft	100	50	250	50	200						
1019	10,000	700 ft	100	50	250	50	200						
1020	10,000	750 ft	100	50	250	50	200						
1021	10,000	800 ft	100	50	250	50	200						
1022	10,000	850 ft	100	50	250	50	200						
1023	10,000	900 ft	100	50	250	50	200						
1024	10,000	950 ft	100	50	250	50	200						
1025	10,000	1,000 ft	100	50	250	50	200						
1026	10,000	1,050 ft	100	50	250	50	200						
1027	10,000	1,100 ft	100	50	250	50	200						
1028	10,000	1,150 ft	100	50	250	50	200						
1029	10,000	1,200 ft	100	50	250	50	200						
1030	10,000	1,250 ft	100	50	250	50	200						
1031	10,000	1,300 ft	100	50	250	50	200						
1032	10,000	1,350 ft	100	50	250	50	200						
1033	10,000	1,400 ft	100	50	250	50	200						
1034	10,000	1,450 ft	100	50	250	50	200						
1035	10,000	1,500 ft	100	50	250	50	200						
1036	10,000	1,550 ft	100	50	250	50	200						
1037	10,000	1,600 ft	100	50	250	50	200						
1038	10,000	1,650 ft	100	50	250	50	200						
1039	10,000	1,700 ft	100	50	250	50	200						
1040	10,000	1,750 ft	100	50	250	50	200						
1041	10,000	1,800 ft	100	50	250	50	200						
1042	10,000	1,850 ft	100	50	250	50	200						
1043	10,000	1,900 ft	100	50	250	50	200						
1044	10,000	1,950 ft	100	50	250	50	200						
1045	10,000	2,000 ft	100	50	250	50	200						
1046	10,000	2,050 ft	100	50	250	50	200						
1047	10,000	2,100 ft	100	50	250	50	200						
1048	10,000	2,150 ft	100	50	250	50	200						
1049	10,000	2,200 ft	100	50	250	50	200						
1050	10,000	2,250 ft	100	50	250	50	200						
1051	10,000	2,300 ft	100	50	250	50	200						
1052	10,000	2,350 ft	100	50	250	50	200						
1053	10,000	2,400 ft	100	50	250	50	200						
1054	10,000	2,450 ft	100	50	250	50	200						
1055	10,000	2,500 ft	100	50	250	50	200						
1056	10,000	2,550 ft	100	50	250	50	200						
1057	10,000	2,600 ft	100	50	250	50	200						
1058	10,000	2,650 ft	100	50	250	50	200						
1059	10,000	2,700 ft	100	50	250	50	200						
1060	10,000	2,750 ft	100	50	250	50	200						
1061	10,000	2,800 ft	100	50	250	50	200						
1062	10,000	2,850 ft	100	50	250	50	200						
1063	10,000	2,900 ft	100	50	250	50	200						
1064	10,000	2,950 ft	100	50	250	50	200						
1065	10,000	3,000 ft	100	50	250	50	200						
1066	10,000	3,050 ft	100	50	250	50	200						
1067	10,000	3,100 ft	100	50	250	50	200						
1068	10,000	3,150 ft	100	50	250	50	200						
1069	10,000	3,200 ft	100	50	250	50	200						
1070	10,000	3,250 ft	100	50	250	50	200						
1071	10,000	3,300 ft	100	50	250	50	200						
1072	10,000	3,350 ft	100	50	250	50	200						
1073	10,000	3,400 ft	100	50	250	50	200						
1074	10,000	3,450 ft	100	50	250	50	200						
1075	10,000	3,500 ft	100	50	250	50	200						
1076	10,000	3,550 ft	100	50	250	50	200						
1077	10,000	3,600 ft	100	50	250	50	200						
1078	10,000	3,650 ft	100	50	250	50	200						
1079	10,000	3,700 ft	100	50	250	50	200						
1080	10,000	3,750 ft	100	50	250	50	200						
1081	10,000	3,800 ft	100	50	250	50	200						
1082	10,000	3,850 ft	100	50	250	50	200						
1083	10,000	3,900 ft	100	50	250	50	200						
1084	10,000	3,950 ft	100	50	250	50	200						
1085	10,000	4,000 ft	100	50	250	50	200						
1086	10,000	4,050 ft	100	50	250	50	200						
1087	10,000	4,100 ft	100	50	250	50	200						
1088	10,000	4,150 ft	100	50	250	50	200						
1089	10,000	4,200 ft	100	50	250	50	200						
1090	10,000	4,250 ft	100	50	250	50	200						
1091	10,000	4,300 ft	100	50	250	50	200						
1092	10,000	4,350 ft	100	50	250	50	200						
1093	10,000	4,400 ft	100	50	250	50	200						
1094	10,000	4,450 ft	100	50	250	50	200						
1095	10,000	4,500 ft	100	50	250	50	200						
1096	10,000	4,550 ft	100	50	250	50	200						
1097	10,000	4,600 ft	100	50	250	50	200						
1098	10,000	4,650 ft	100	50	250	50	200						
1099	10,000	4,700 ft	100	50	250	50	200						
1100	10,000	4,750 ft	100	50	250	50	200						
1101	10,000	4,800 ft	100	50	250	50	200						
1102	10,000	4,850 ft	100	50	250	50	200						
1103	10,000	4,900 ft	100	50	250	50	200						
1104	10,000	4,950 ft	100	50	250	50	200						
1105	10,000	5,000 ft	100	50	250	50	200						
1106	10,000	5,050 ft	100	50	250	50	200						
1107	10,000	5,100 ft	100	50	250	50	200						
1108	10,000	5,150 ft	100	50	250	50	200						
1109	10,000	5,200 ft	100	50	250	50	200						
1110	10,000	5,250 ft	100	50	250	50	200						
1111	10,000	5,300 ft	100	50	250	50	200						
1112	10,000	5,350 ft	100	50	250	50	200						
1113	10,000	5,400 ft	100	50	250	50	200						
1114	10,000	5,450 ft	100	50	250	50	200						
1115	10,000	5,500 ft	100	50	250	50	200						
1116	10,000	5,550 ft	100	50	250	50	200						
1117	10,000	5,600 ft	100	50	250	50	200						
1118	10,000	5,650 ft	100	50	250	50	200						
1119	10,000	5,700 ft	100	50	250	50	200						
1120	10,000	5,750 ft	100	50	250	50	200						
1121	10,000	5,800 ft	100	50	250	50	200						
1122	10,000	5,850 ft	100	50	250	50	200						
1123	10,000	5,900 ft	100	50	250	50	200						
1124	10,000	5,950 ft	100	50	250	50	200						
1125	10,000	6,000 ft	100	50	250	50	200						
1126	10,000	6,050 ft	100	50	250	50	200						
1127	10,000	6											



NOTES

1. ALL STEEL TO BE GRADE 400W
2. STRENGTH OF CONCRETE
35MPa — INTERIOR COLUMNS & WALLS
3. CONCRETE COVER:
TIES — 40mm

BAR SIZE	STANDARD LAP (mm)
10M	300
15M	440
20M	590
25M	730
30M	880
35M	1030

BAR SIZE	$t_c=25$			$t_c=30$			$t_c=35$		
	L/D	L/S	L/D	L/D	L/S	L/D	L/D	L/S	L/D
10M	4.90	3.80	4.50	3.50	4.20	3.20			
15M	7.40	5.70	6.70	5.20	6.20	4.80			
20M	8.60	7.50	8.80	6.90	8.30	6.40			
25M	15.50	11.70	13.90	10.70	12.90	9.90			
30M	18.30	14.10	16.70	12.80	15.50	11.90			
35M	21.30	16.40	19.50	15.00	18.00	13.90			

DRAWING REVIEW

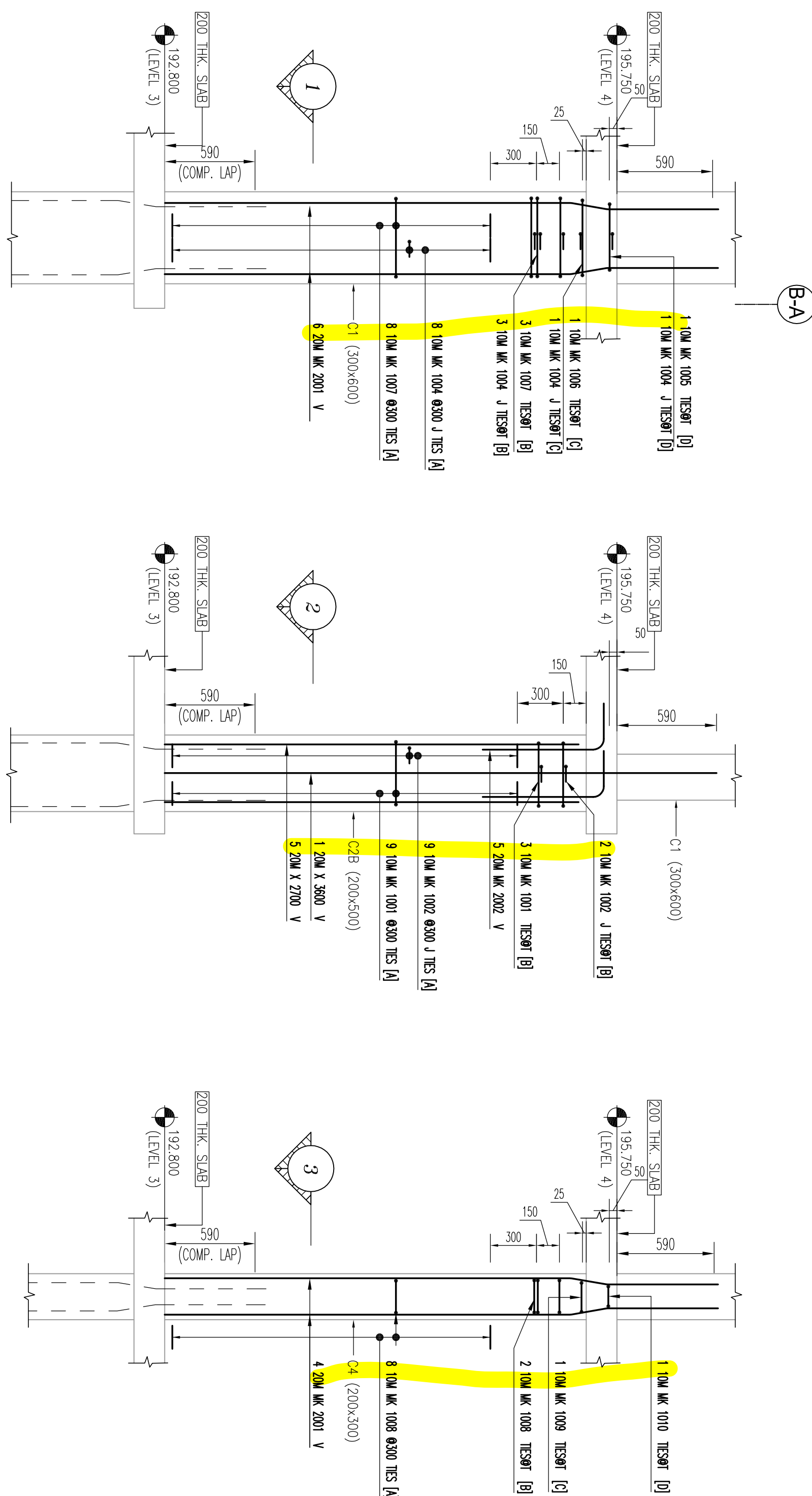
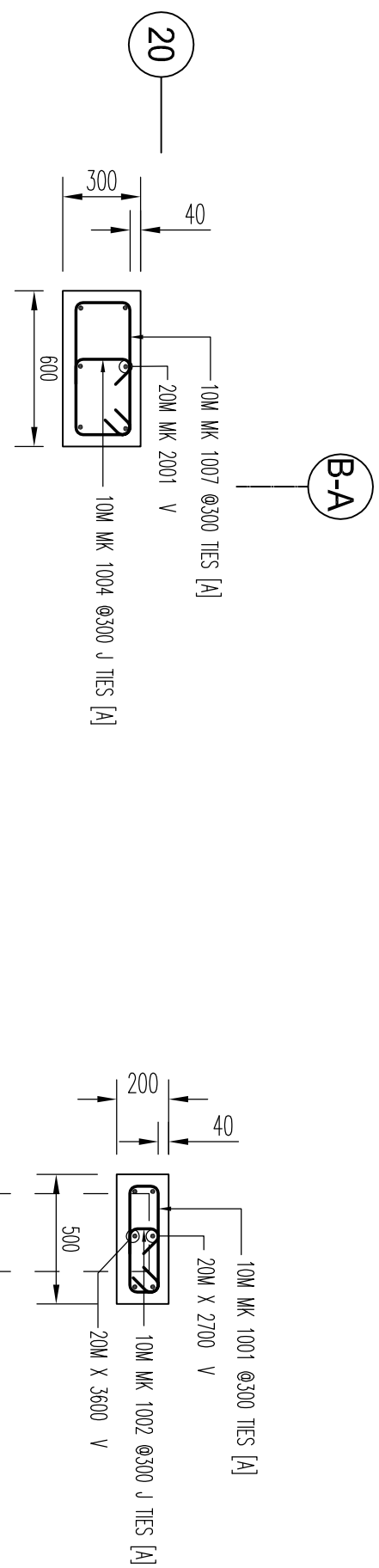
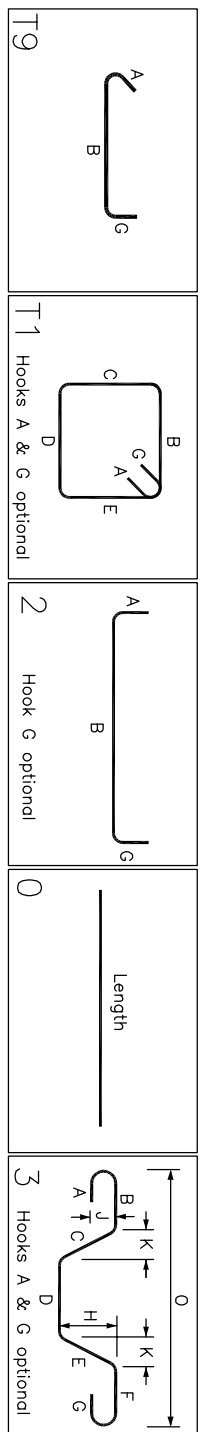
This review of this drawing does not in any way, relieve the contractor of responsibility for its accuracy, or for compliance with the contract documents.

✓	
No comment	See comment
Amend & Resubmit	Rejected See Remarks

Submission No.	19066
Project No.	
By	MB
Date	15 Oct 2021

JABLONSKY, AST AND PARTNERS
Consulting Engineers
1129 Leslie Street Don Mills, Ont. M3C 2K5

[illegible]

[illegible]

NOTES

1. ALL STEEL TO BE GRADE 400W
2. STRENGTH OF CONCRETE
35MPa – INTERIOR COLUMNS & WALLS
3. CONCRETE COVER:
TIES – 40mm

BAR SIZE	STANDARD LAP (mm)
10M	300
15M	440
20M	590
25M	730
30M	880
35M	1030

BAR SIZE	$f_c=25$		$f_c=30$		$f_c=35$	
	L.S.	L.d	L.S.	L.d	L.S.	L.d
10M	490	380	450	350	420	320
15M	740	570	670	520	620	480
20M	880	750	890	690	830	640
25M	1530	1170	1390	1070	1290	990
30M	1830	1410	1670	1290	1550	1190

DRAWING REVIEW	
This review of this drawing does not in any way relieve the contractor of responsibility for its accuracy or for compliance with the contract documents.	
<input checked="" type="checkbox"/> No comment	<input type="checkbox"/> See comment
<input type="checkbox"/> Amend & Resubmit	<input type="checkbox"/> Rejected See Remarks

G+C
no architectural items noted for G+C to review

[illegible]

0	FOR APPROVAL	OCT/14/21	u
1			
2			
3			
4			
5			
6			
7			
8			
9			
10			
11			
12			
13			
14			
15			
16			
17			
18			
19			
20			
21			
22			
23			
24			
25			
26			
27			
28			
29			
30			
31			
32			
33			
34			
35			
36			
37			
38			
39			
40			
41			
42			
43			
44			
45			
46			
47			
48			
49			
50			
51			
52			
53			
54			
55			
56			
57			
58			
59			
60			
61			
62			
63			
64			
65			
66			
67			
68			
69			
70			
71			
72			
73			
74			
75			
76			
77			
78			
79			
80			
81			
82			
83			
84			
85			
86			
87			
88			
89			
90			
91			
92			
93			
94			
95			
96			
97			
98			
99			
100			

**FORESTSIDE TOWNHOUSES
-BRAMPTON, ON**

PART OF STRUCTURE		COLUMNS L3-L4 - P#6	
CUSTOMER:		Project no. 2177	
ROYAL PINE HOMES		SCALE AS SHOWN	
DEFINED BY: <u> </u>	BAR LIST No.	DRAWING No.	
CHECKED BY: <u> </u>		R14.3	
		0	