



**UNITED ENGINEERING INC**  
Mechanical and Electrical Consulting Engineers

3645 Keele St. #105  
Toronto, ON, M3J 1M6  
Email: info@u-eng.ca  
T: (416) 398-1999  
F: (416) 398-1933

## **SITE SUPPLEMENTAL INSTRUCTION**

**PROJECT:** Forestside Estates  
Attmar & Palleschi Drive  
Brampton, Ontario

**PROJECT NO.:** 18-017

**CONTRACT:** Electrical

**DATE:** Apr. 18, 2023

**SITE SI NO.** E-12

---

THIS SITE SUPPLEMENTAL INSTRUCTION IS NOT TO BE CONSTRUED AS A CHANGE IN THE CONTRACT PRICE, BUT IS ISSUED FOR CLARIFICATION ONLY. IF A CHANGE IN CONTRACT PRICE IS PERCEIVED, PROVIDE AN ITEMIZED BREAKDOWN OF ANY EXTRAS OR CREDITS WITHIN SEVEN (7) WORKING DAYS.

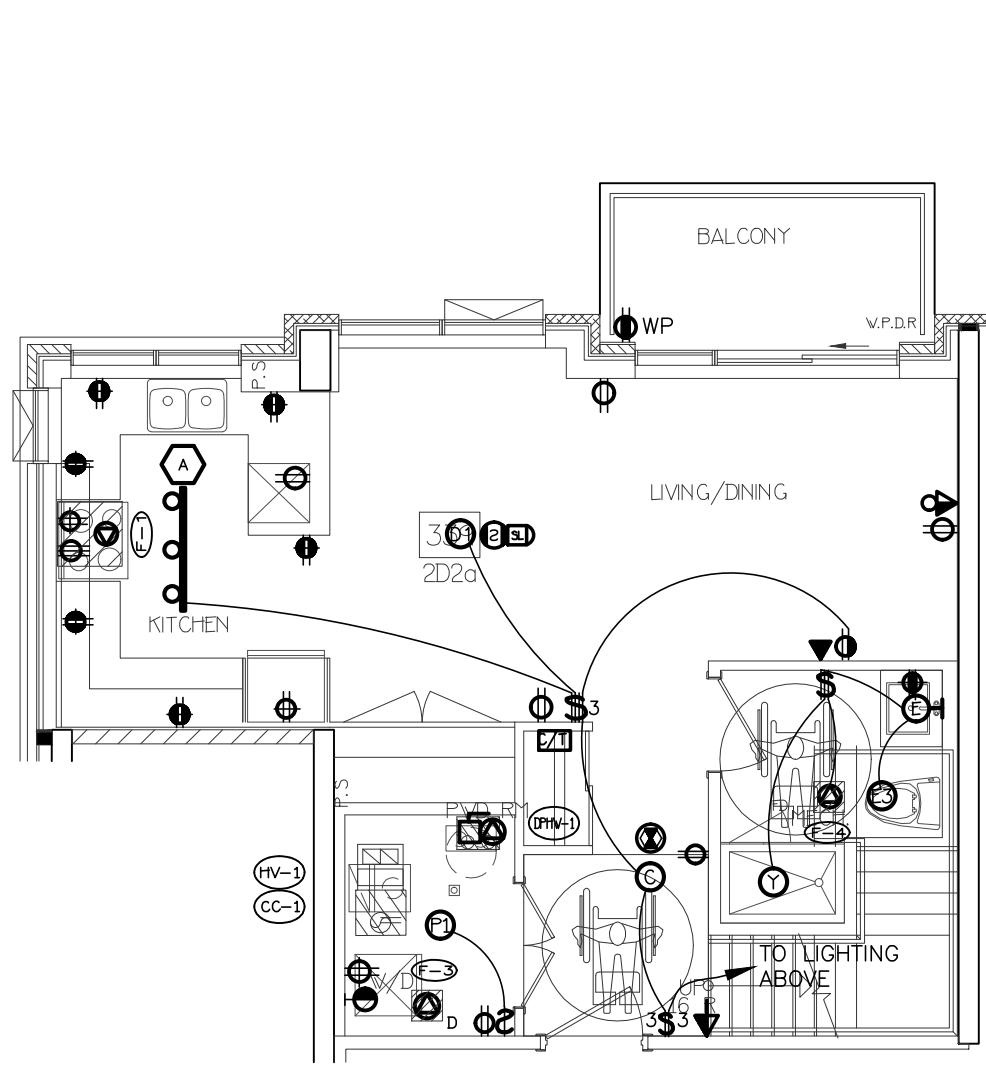
**PURPOSE:** Revised as per client request and Mech SI M-13.

### **1.0 Reference Drawing E-8 (Typical Suite Layout - Electrical) Issued**

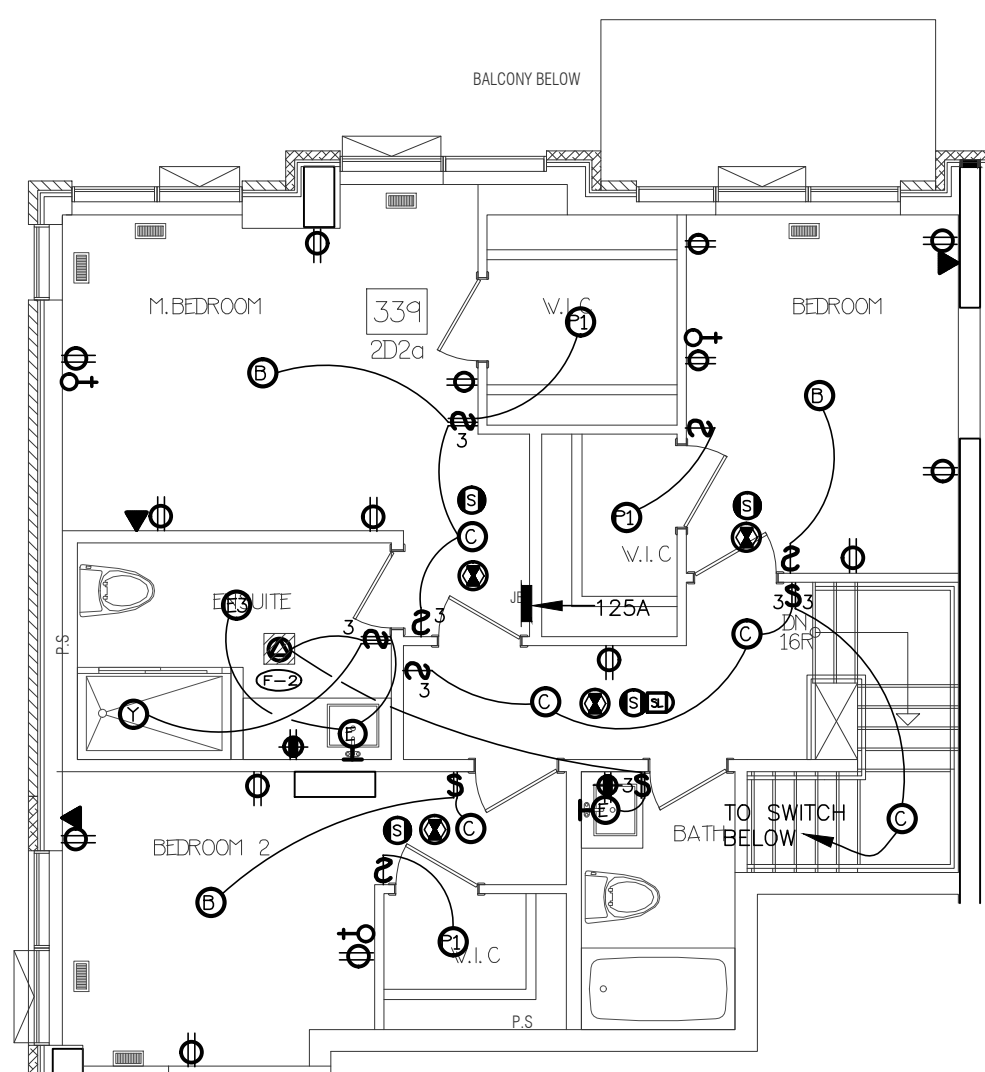
1.1 Add: 0.5KW Electric basebord heater for suite 239.

**PREPARED BY:**           *Susan Pan*            
Susan Pan  
Electrical Department

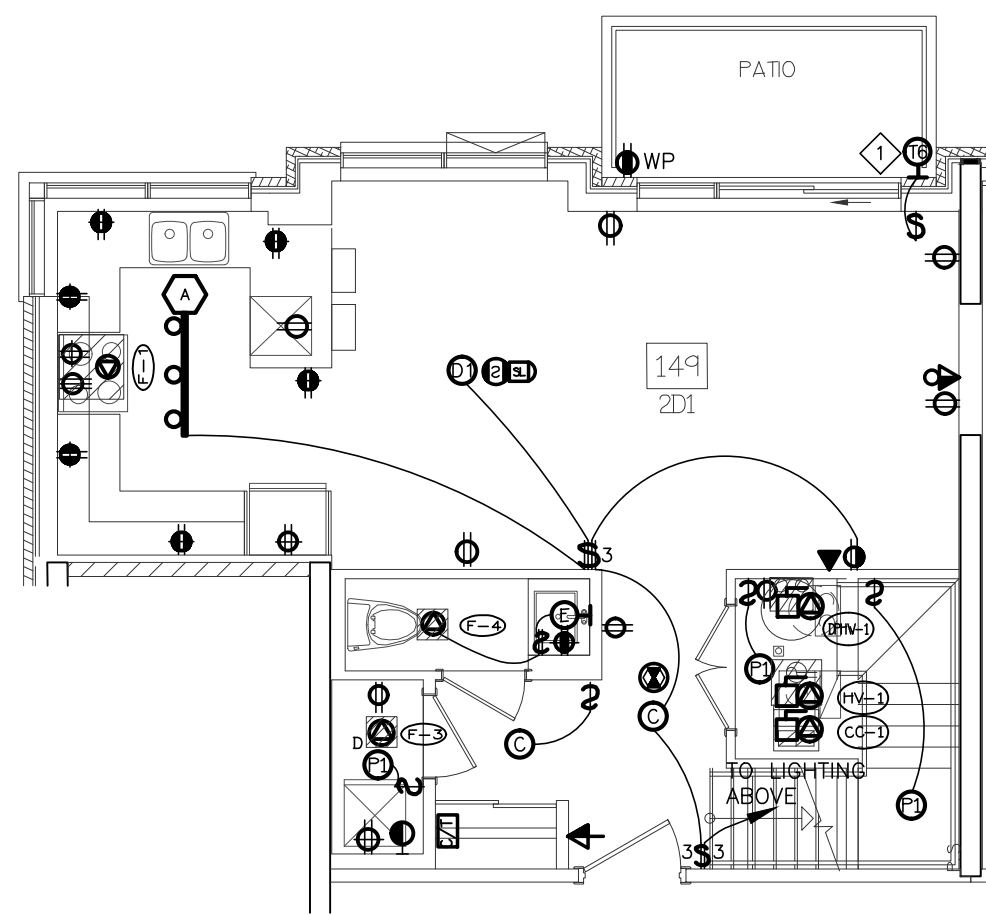
ISSUED TO ROYAL PINE HOMES,  
Cinzia Caruso, Cinzia@royalpinehomes.com;  
Vince Staffieri, vince@royalpinehomes.com  
FOR DISTRIBUTION TO ALL AFFECTED PARTIES.



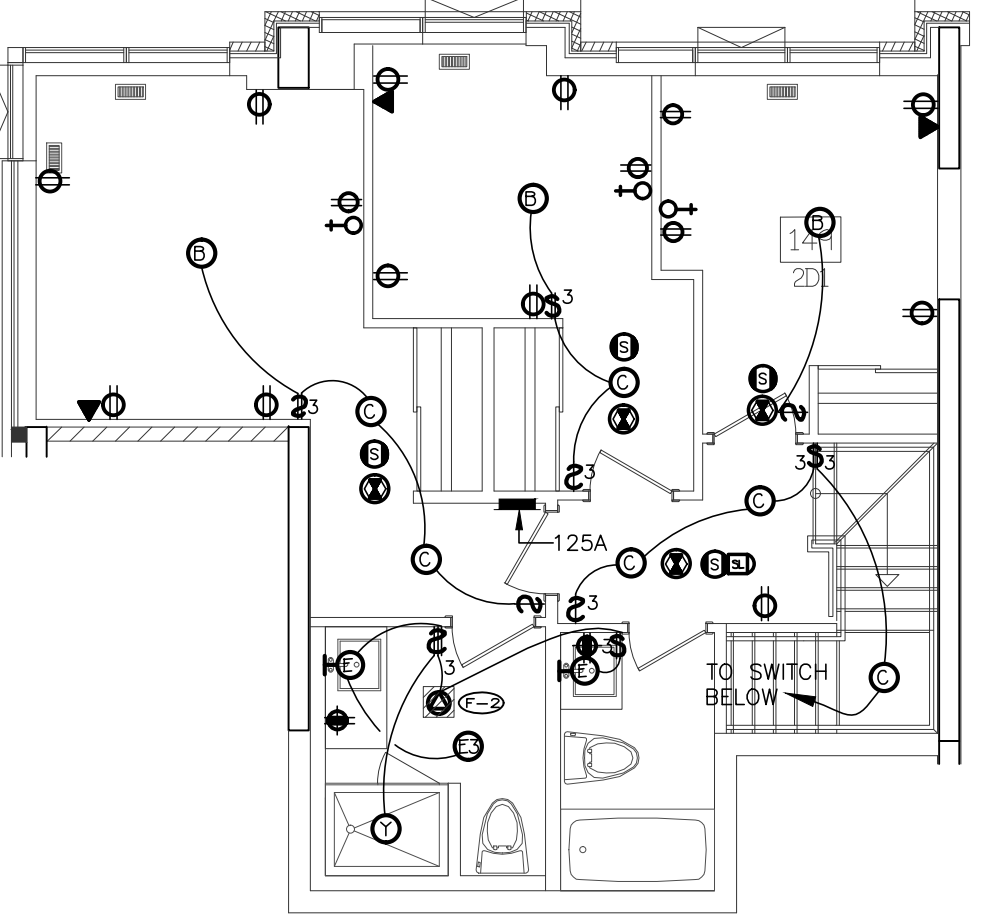
21 SUITE LAYOUT TYPE 2D2a  
LOWER LEVEL



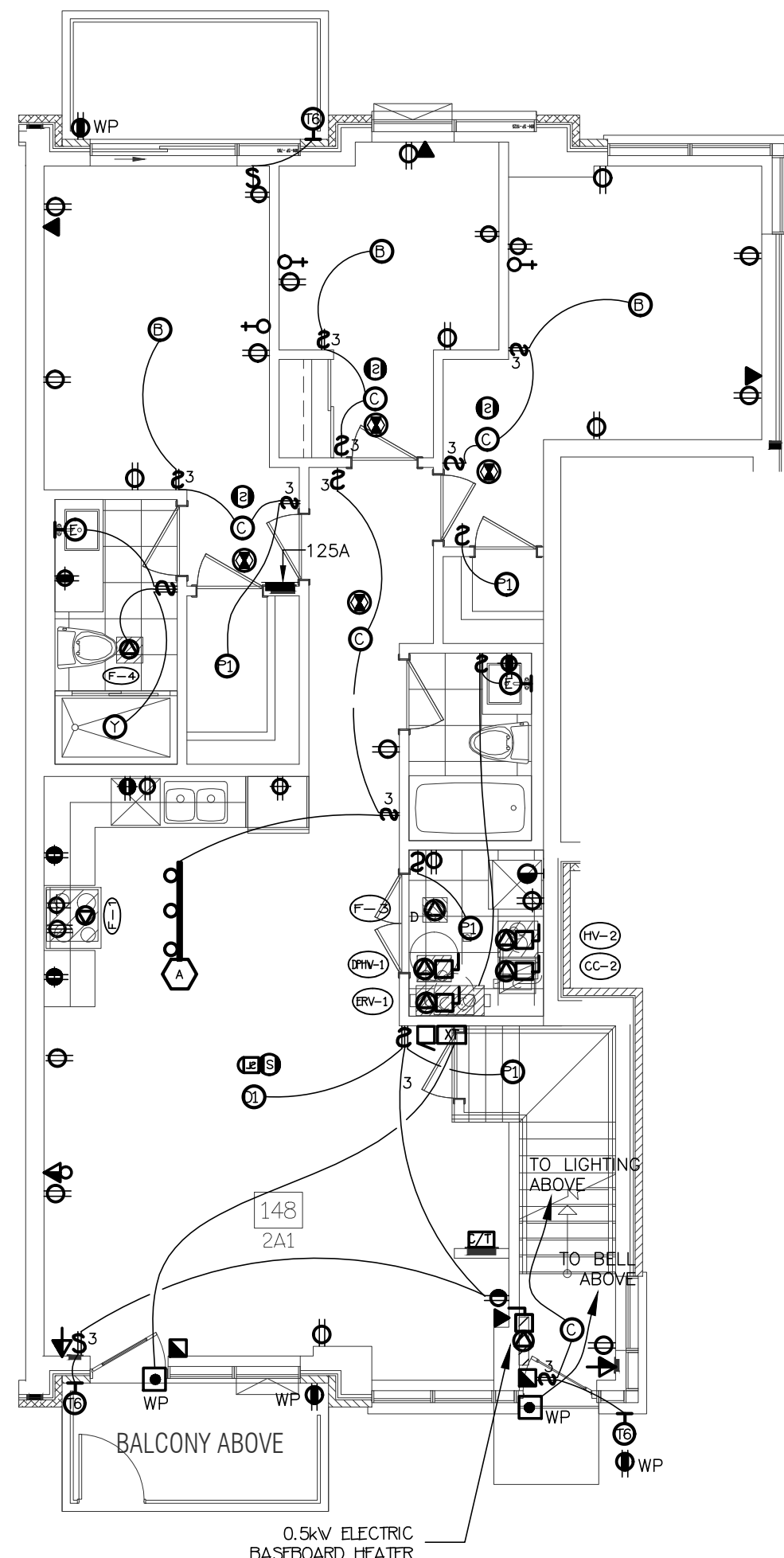
22 SUITE LAYOUT TYPE 2D2a  
UPPER LEVEL



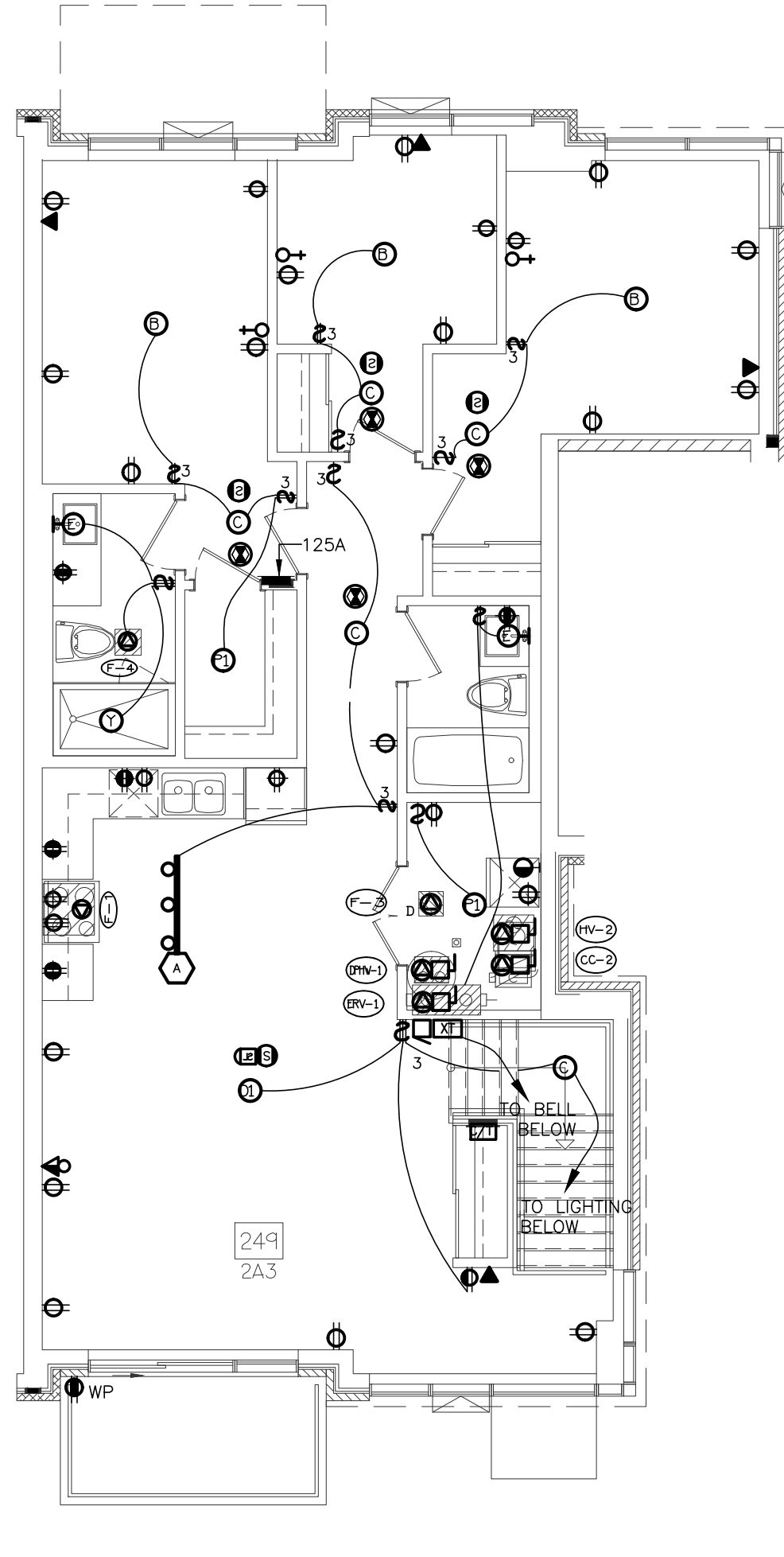
17 SUITE LAYOUT TYPE 2D1  
LOWER LEVEL



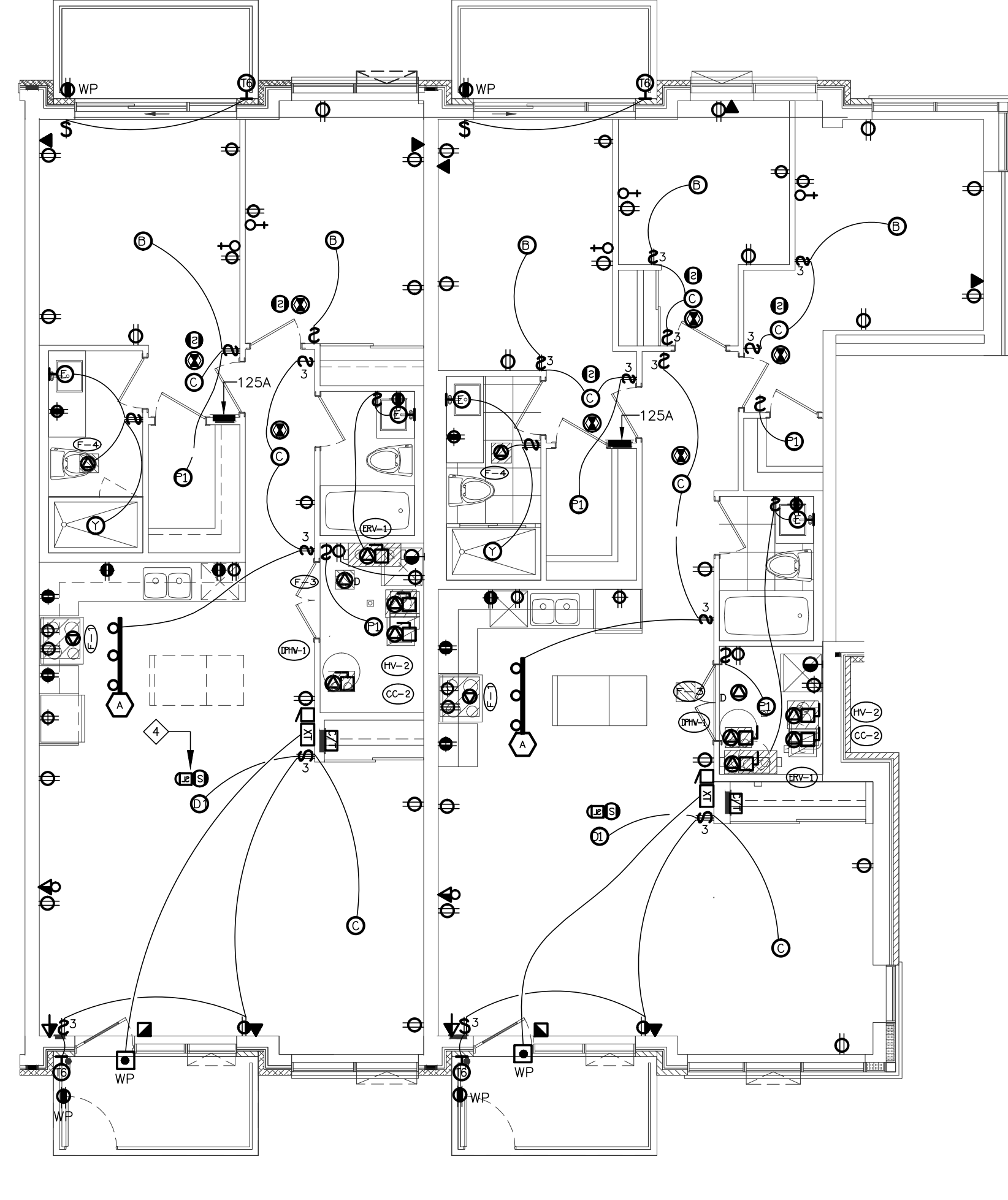
18 SUITE LAYOUT TYPE 2D1  
UPPER LEVEL



19 SUITE LAYOUT TYPE 2A1 & 2A3  
GROUND FLOOR



20 SUITE LAYOUT TYPE 2A3  
SECOND FLOOR



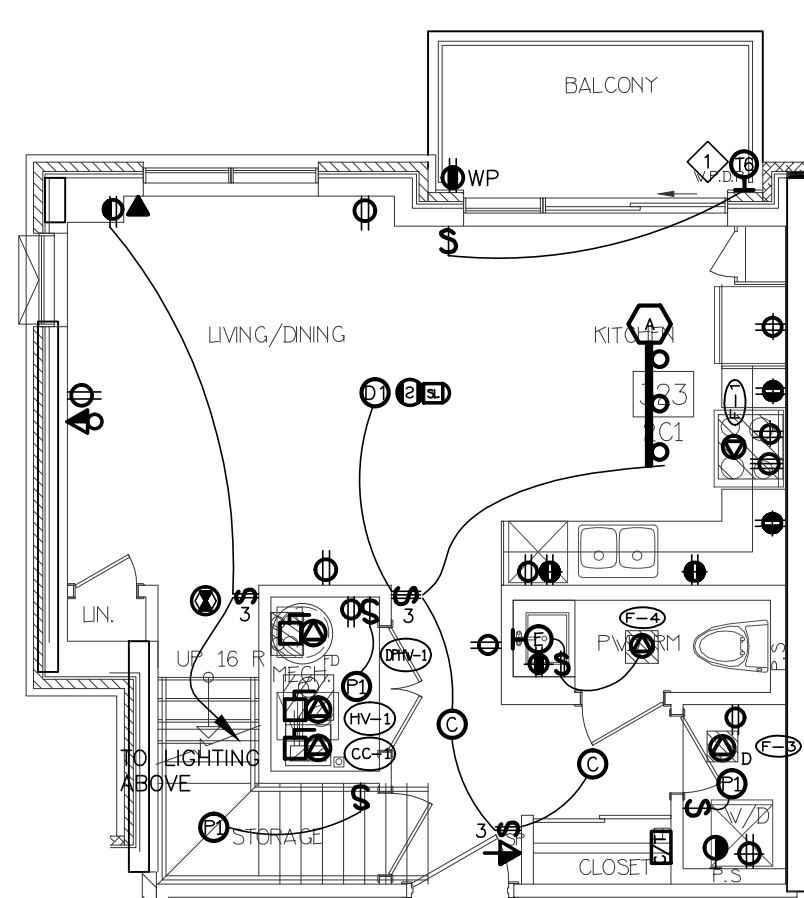
21 SUITE LAYOUT TYPE 2A1-R & 2A-R  
GROUND FLOOR

## KEY NOTES

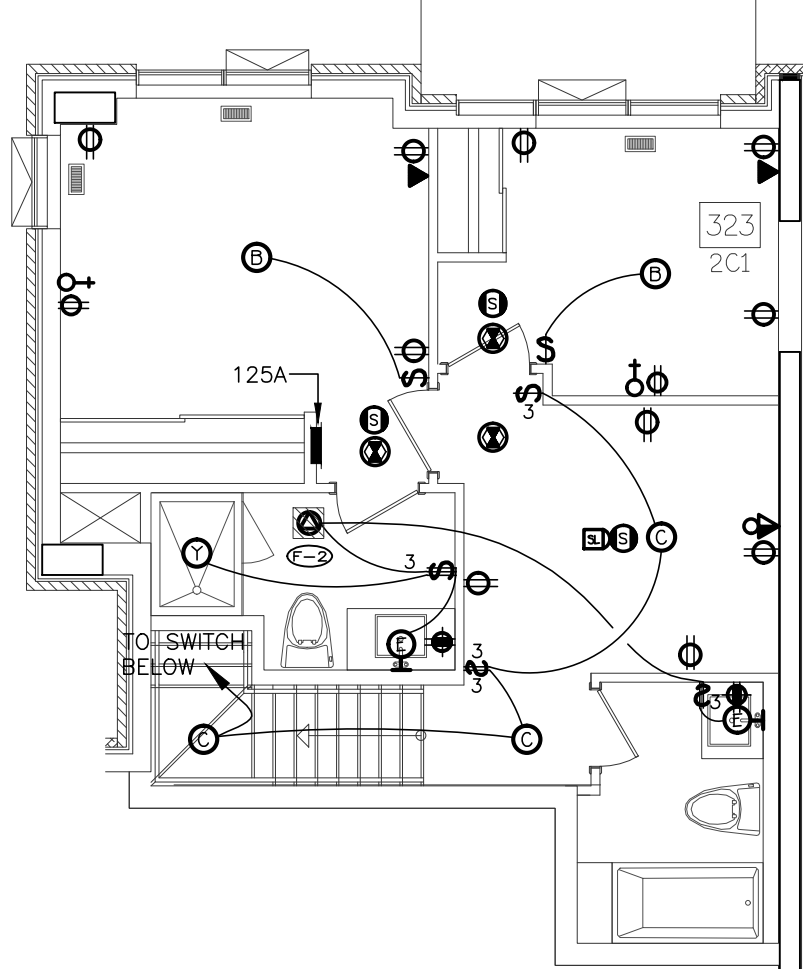
◇ PATIO EXTERIOR LIGHTING ONLY ON GROUND FLOOR

## SUITES' KEY NOTES (TYPICAL)

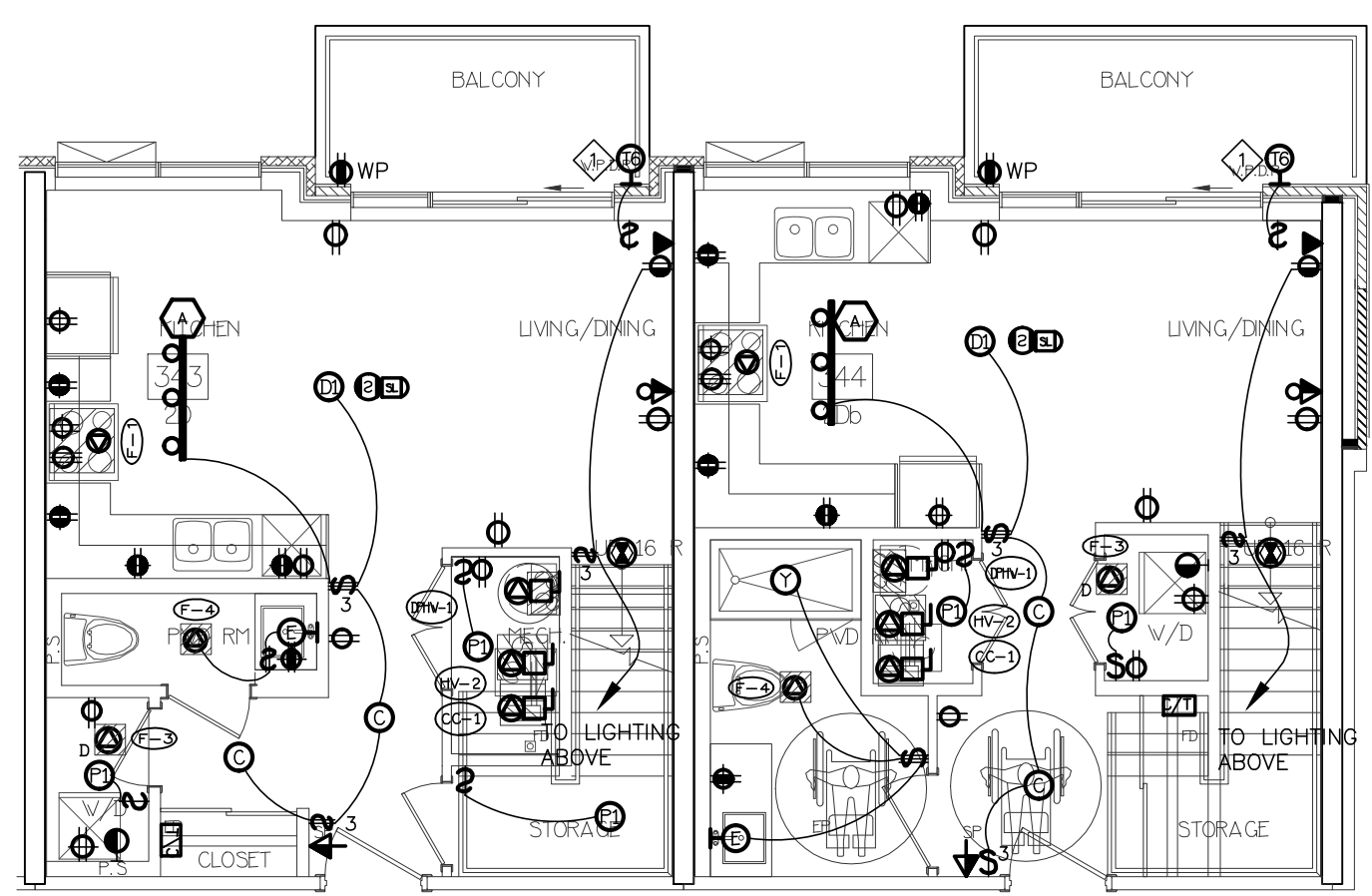
- NOT USED
  - SUITE INTRUSION/ALARM AND KEYPAD WITH DIGITAL DISPLAY
  - IN SUITE TELEPHONE/TV COMBO DISTRIBUTION PANEL
  - CEILING MOUNTED FIRE ALARM COMBINATION SPEAKER/STROBE LIGHT
  - 120V U-GROUND DUPLEX RECEPTACLE FOR GENERAL PURPOSES
  - 120V U-GROUND DUPLEX RECEPTACLE WITH ONE HALF SWITCH CONTROLLED
  - WALL MOUNTED TELEPHONE OUTLET
  - 120V, 15A, RECEPTACLE FOR FRIDGE
  - 120V, 20A, T-SLOT RECEPTACLE MOUNTED ABOVE COUNTER TOP (ALL RECEPTACLES LOCATED WITHIN 1.5M OF KITCHEN SINKS ALONG THE WALL BEHIND THE COUNTERS SHALL BE PROTECTED BY GFI BREAKERS OF THE CLASS A TYPE)
  - TOWNHOUSE EXTERIOR LIGHTING TYPE TO BE CONFIRMED (TYPICAL), REFER TO ARCHITECTURE ELEVATION DRAWING FOR EXACT LOCATION AND QUANTITY
  - 250V, 1P, 4W, 50A, RECEPTACLE FOR RANGE. CONNECT WITH 3/4" BX OR 3/8" THW-19MM CONDUIT
  - RECEPTACLE FOR KITCHEN MICROWAVE AND EXHAUST FAN
  - 120V U-GROUND DUPLEX RECEPTACLE FOR DISHWASHER
  - WALL MOUNTED COMBINATION TV/TELEPHONE OUTLET
  - CEILING MOUNTED FIRE ALARM SPEAKER
  - CEILING MOUNTED 120V SMOKE ALARM/CARBON MONOXIDE COMBO DETECTOR
- ALL DETECTORS WITHIN SAME SUITE TO BE INTERCONNECTED AND HAVE A VISUAL SIGNALING COMPONENT IN ACCORDANCE WITH CBC
- DIRECT CONNECTION FOR ERV UNIT AT HIGH LEVEL, PROVIDE RECEPTACLES IF REQUIRED, REFER TO MECHANICAL DRAWING FOR MORE DETAILS
  - DIRECT CONNECTION FOR AIR HANDLE UNIT, REFER TO MECHANICAL DRAWING FOR MORE DETAILS
  - 120V U-GROUND DUPLEX GFI RECEPTACLE FOR WASHROOM
  - 120V, 15A, RECEPTACLE FOR WASHER
  - 250V, 1P, 4W, 50A, RECEPTACLE FOR DRYER. CONNECT TO 3/4" BX OR 3/8" THW-19MM CONDUIT
  - WALL MOUNTED TV OUTLET
  - DIRECT CONNECTION FOR DRYER EXHAUST FAN
  - DIRECT CONNECTION FOR WASHROOM EXHAUST FAN
  - RECESSED TYPE 0.5KW HEATER
  - PUSH BUTTON (DOOR RINGER)
  - SIGNAL TRANSFER
  - SIGNAL BUZZER
  - FLUSH MOUNTED SUITE SERVICE PANEL, SEE DRAWING E-13 FOR SUITE PANEL SCHEDULE
  - 120V U-GROUND DUPLEX GFI WEATHER PROOF RECEPTACLE IN BALCONY (TYPICAL FOR 1ST FLOOR AND EXTERIOR BALCONY ONLY)
  - 120V U-GROUND DUPLEX WEATHER PROOF RECEPTACLE IN BALCONY (TYPICAL FOR 2ND TO 4TH FLOOR)
  - DIRECT CONNECTION FOR CONDENSING UNIT/COOLING COIL, LOCATION OF CONDENSING UNIT SHOWN IN DRAWING E-24/25 & E-26/27, REFER TO MECHANICAL DRAWING FOR MORE DETAILS. CONFIRM EXACT FEEDER REQUIREMENT WITH UNIT SHOP DRAWING
  - DIRECT CONNECTION FOR CONDENSING COMB. BOILER, REFER TO MECHANICAL DRAWING FOR MORE DETAILS
- NOTES:  
ALSO REFER TO TYPICAL SUITES NOTES ON DRAWING E-xx. (ALL RECEPTACLES SHALL BE PROTECTED BY ARC-FULT INTERRUPTERS)



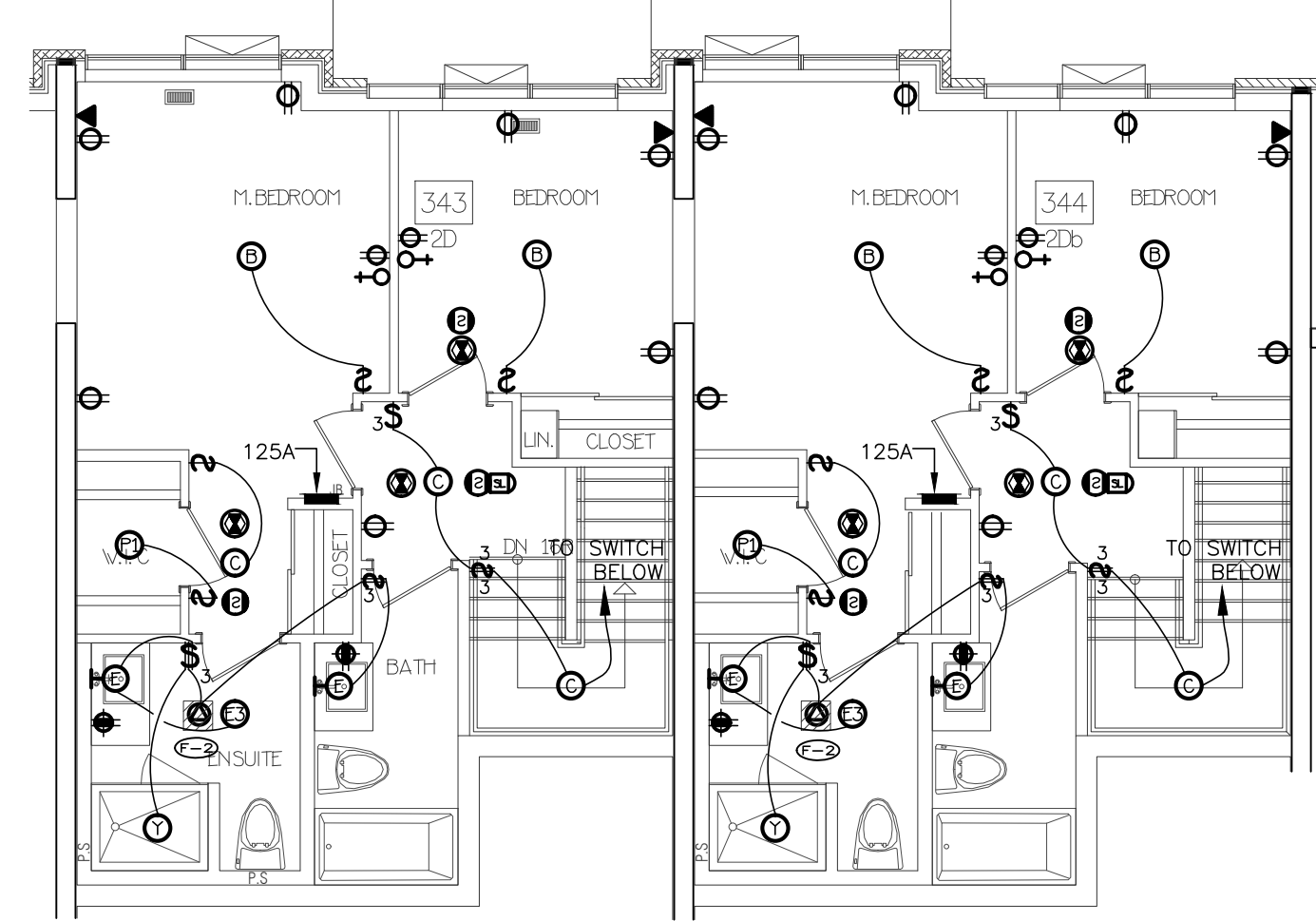
11 SUITE LAYOUT TYPE 2C1  
LOWER LEVEL



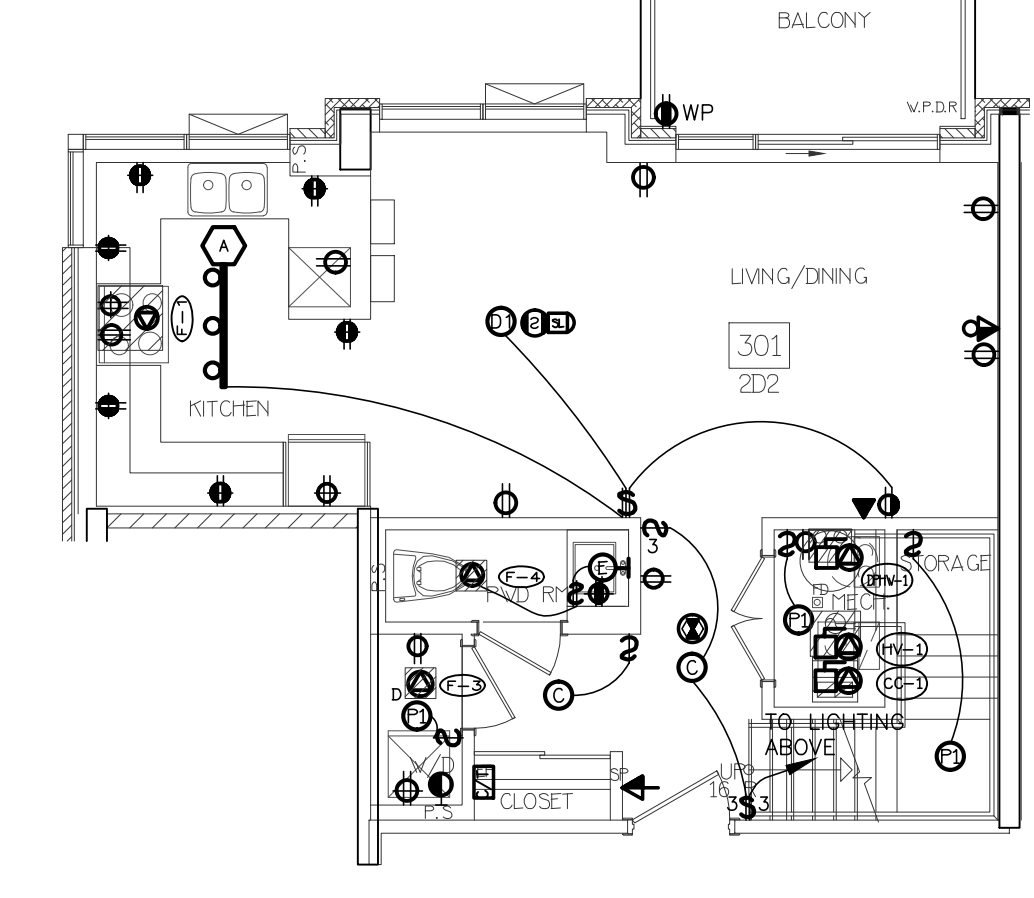
12 SUITE LAYOUT TYPE 2C1  
UPPER LEVEL



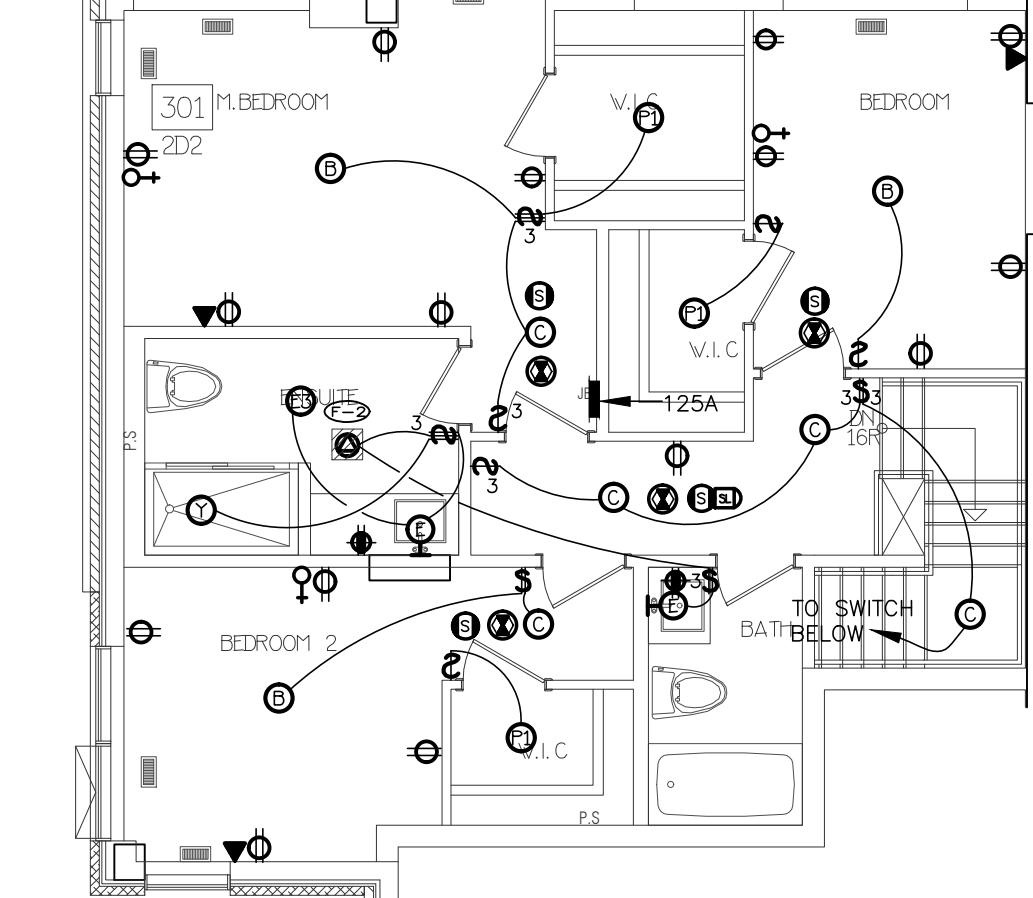
13 SUITE LAYOUT TYPE 2D & 2Db  
LOWER LEVEL



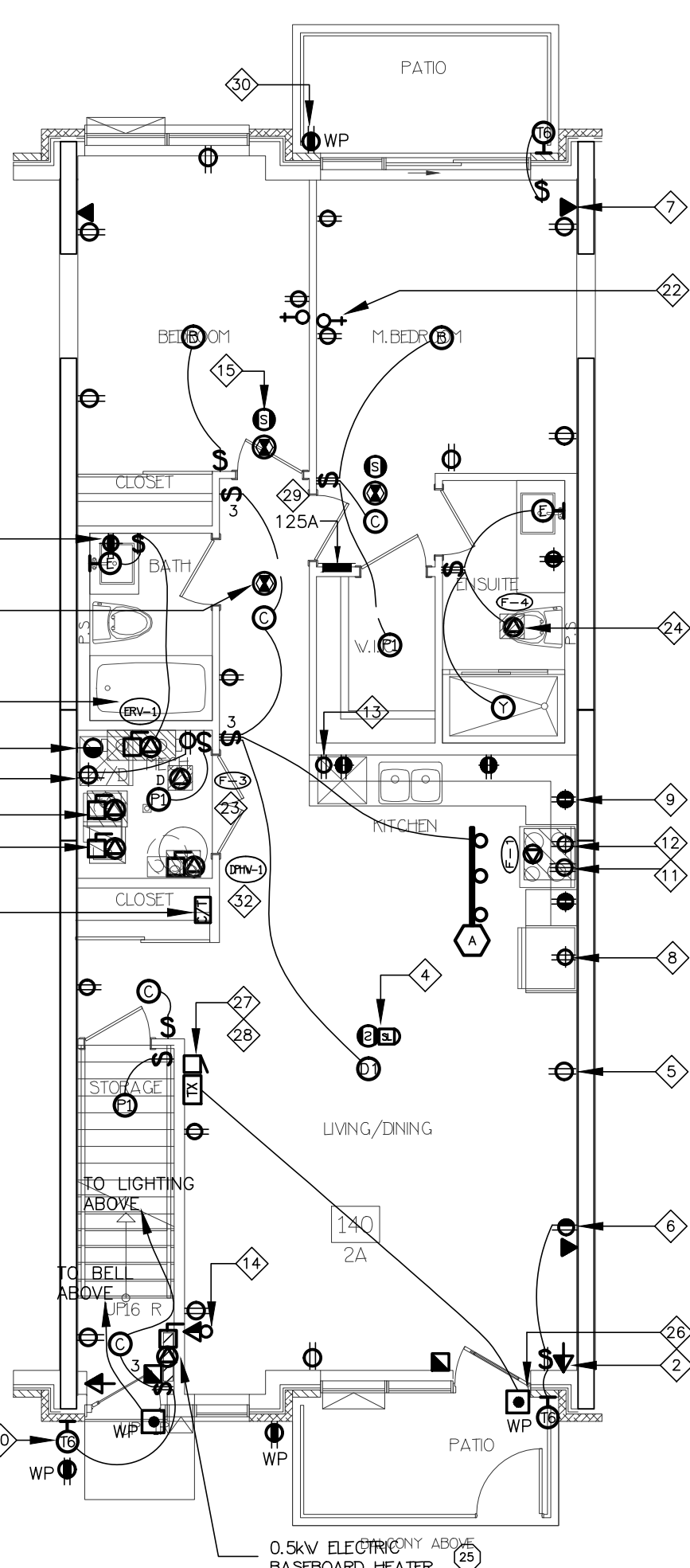
14 SUITE LAYOUT TYPE 2D & 2Db  
UPPER LEVEL



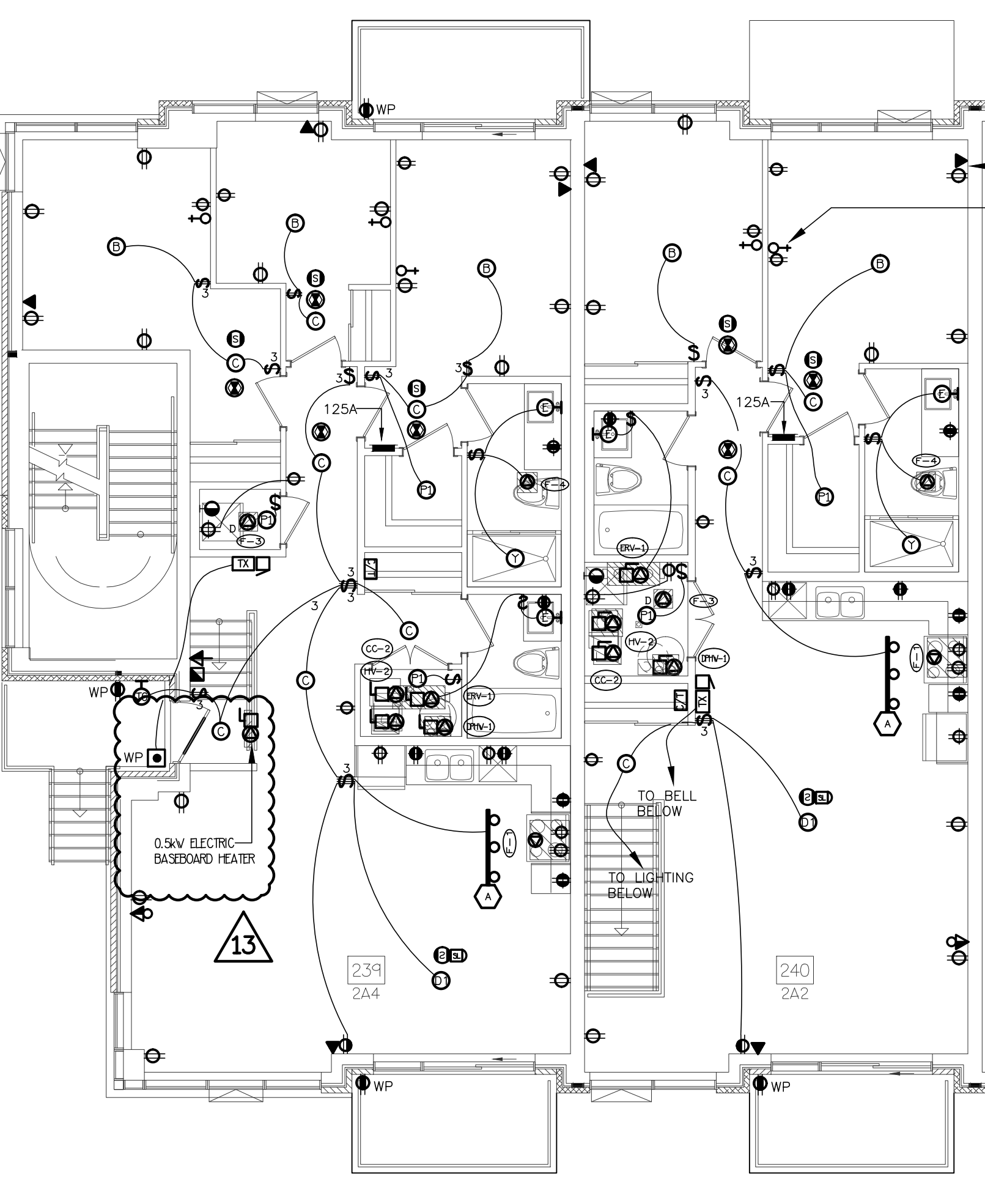
15 SUITE LAYOUT TYPE 2D2  
LOWER LEVEL



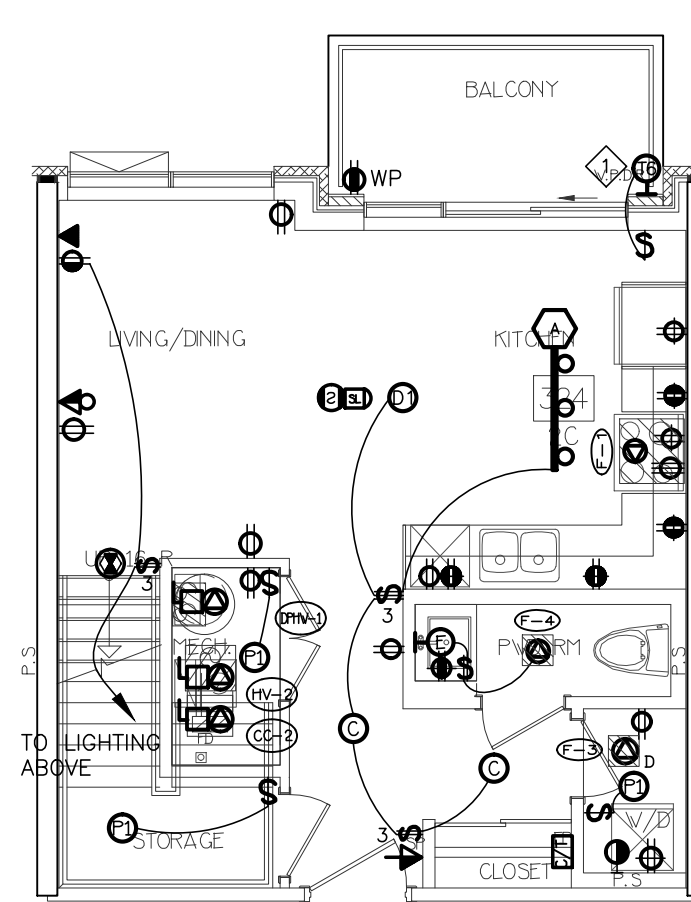
16 SUITE LAYOUT TYPE 2D2  
UPPER LEVEL



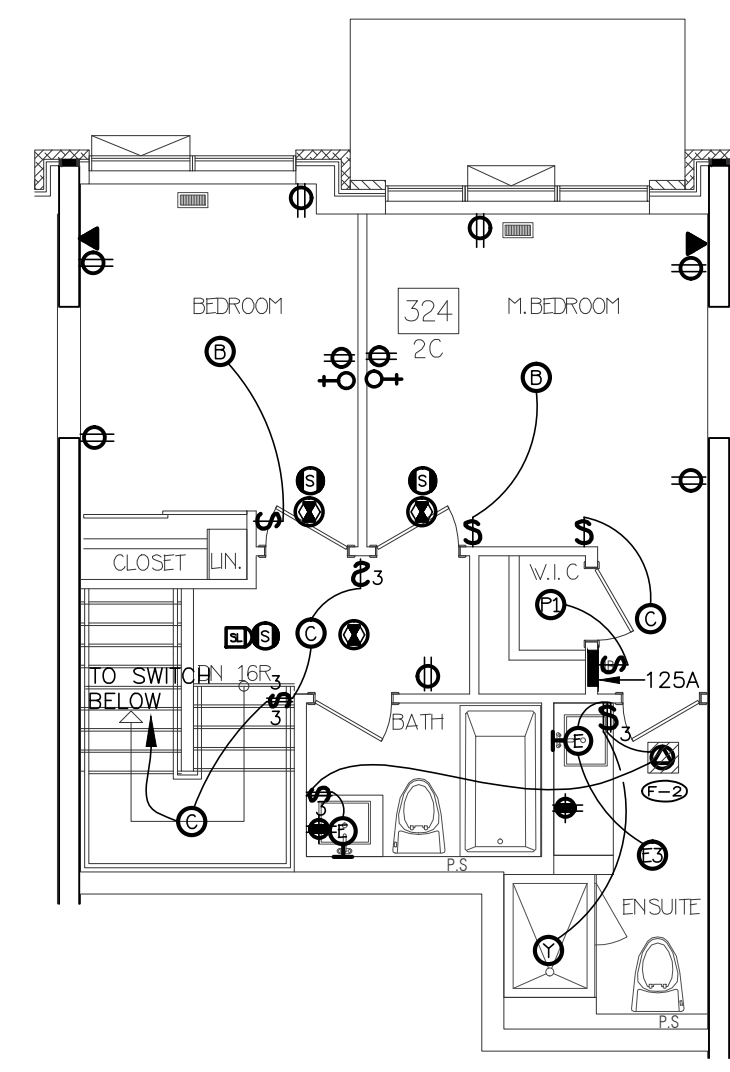
1 SUITE LAYOUT TYPE 2A & 2A2  
GROUND FLOOR



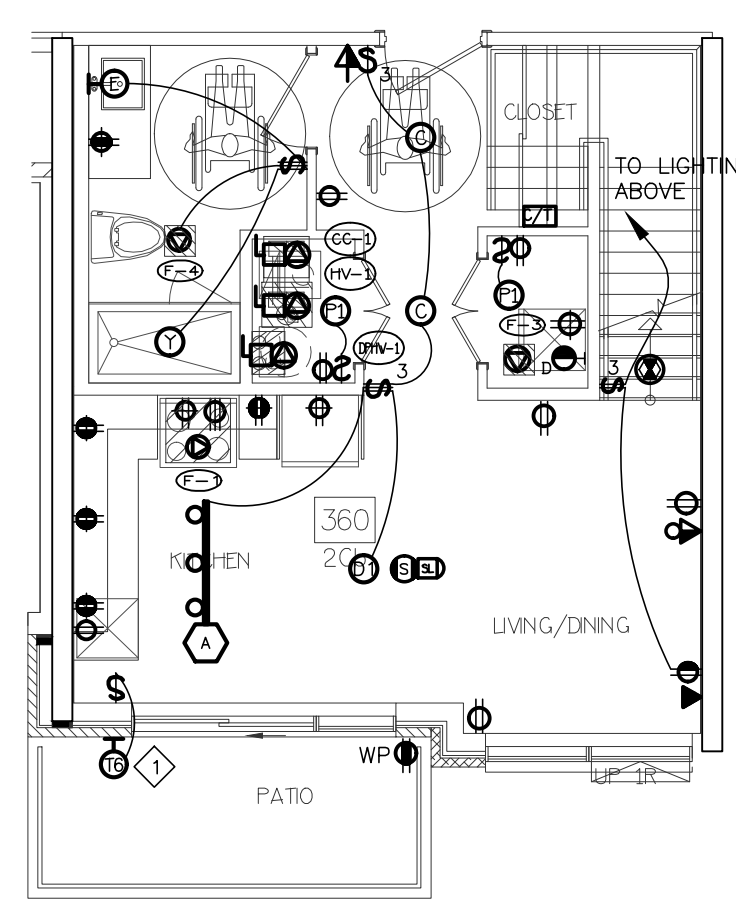
2 SUITE LAYOUT TYPE 2A4 & 2A2  
SECOND FLOOR



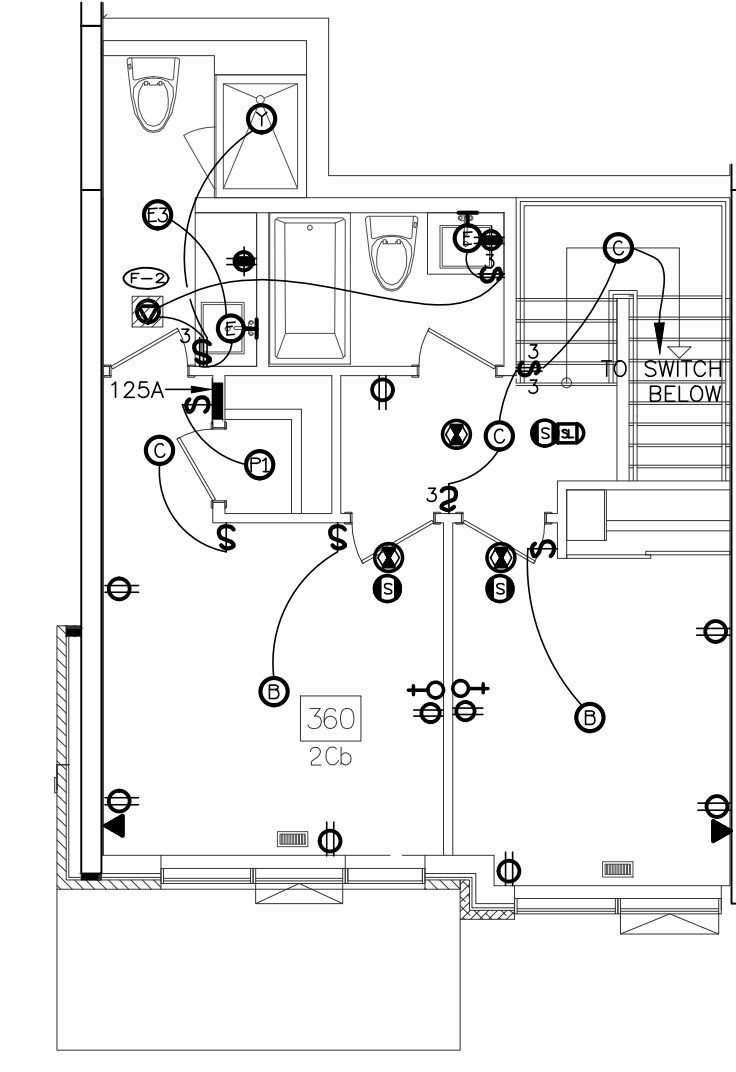
7 SUITE LAYOUT TYPE 2C & 2Ca  
LOWER LEVEL



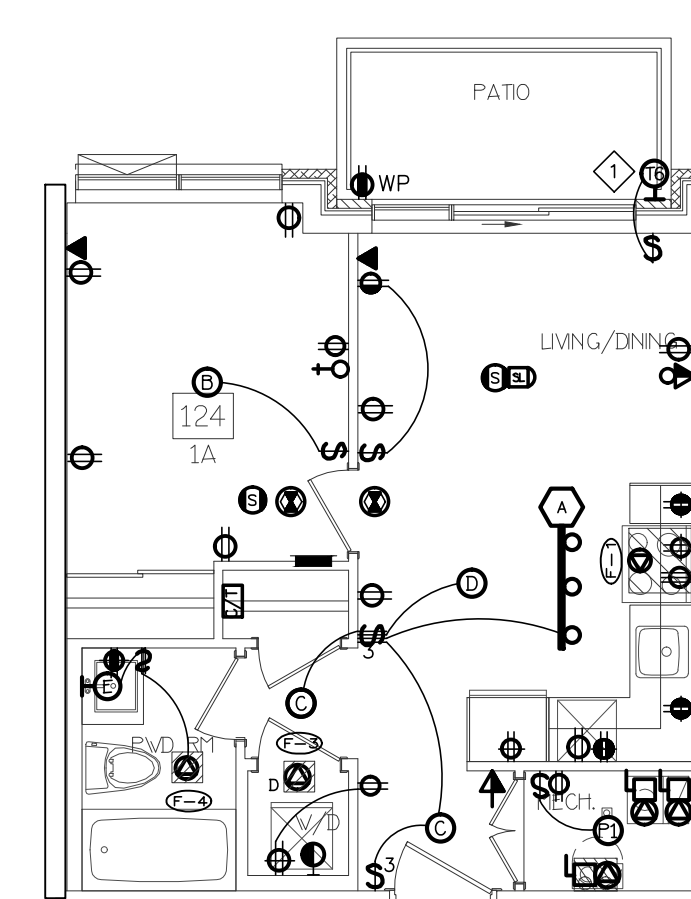
8 SUITE LAYOUT TYPE 2C & 2Ca  
UPPER LEVEL



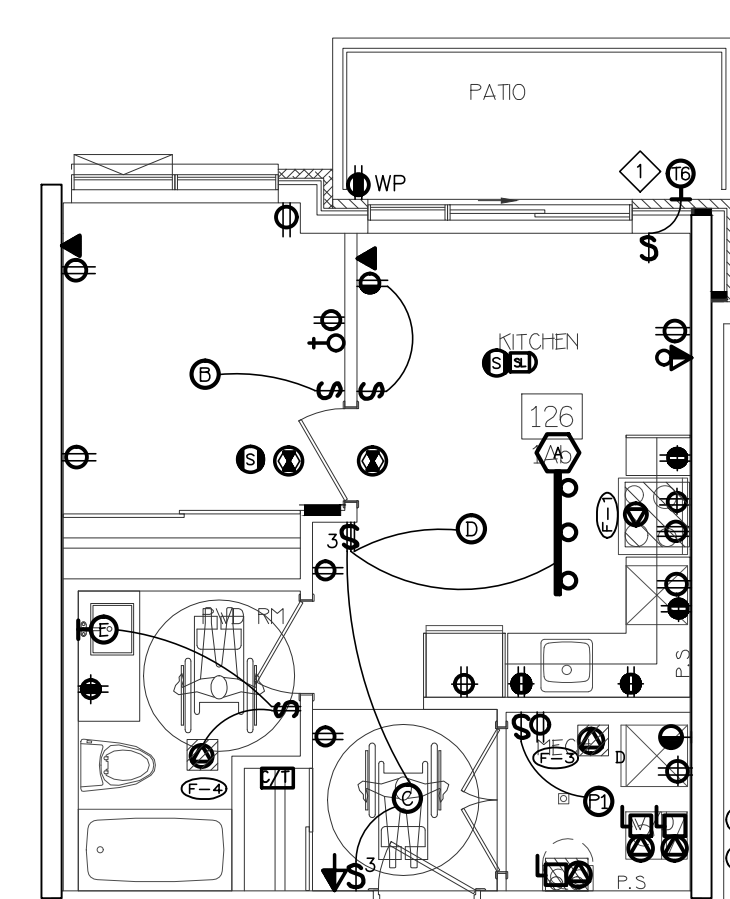
9 SUITE LAYOUT TYPE 2Cb  
LOWER LEVEL



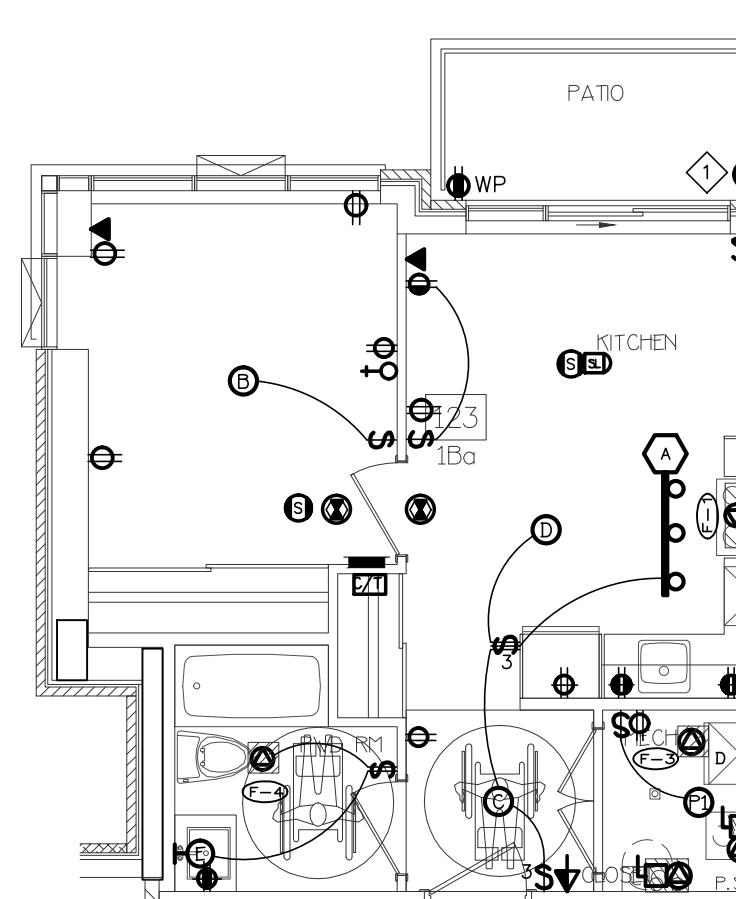
10 SUITE LAYOUT TYPE 2Cb  
UPPER LEVEL



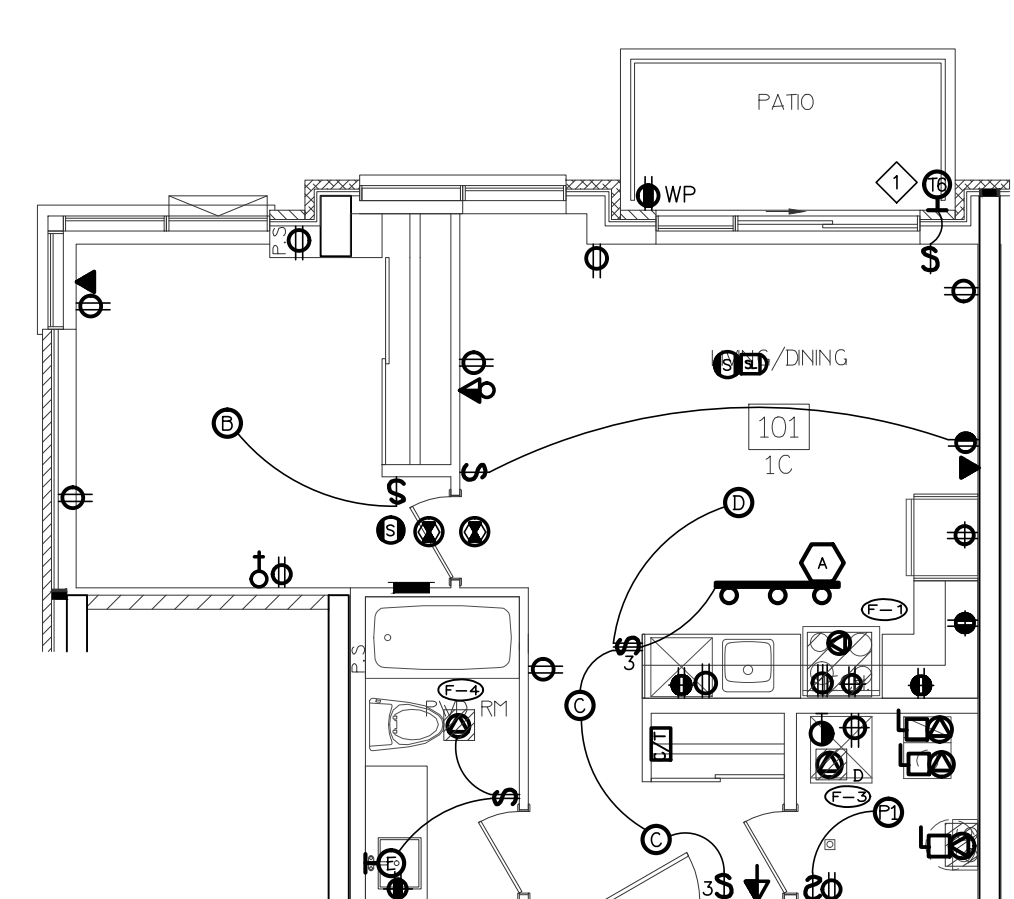
3 SUITE LAYOUT TYPE 1A & 1Aa  
ONE FLOOR LEVEL



4 SUITE LAYOUT TYPE 1Ab  
ONE FLOOR LEVEL



5 SUITE LAYOUT TYPE 1Ba  
ONE FLOOR LEVEL

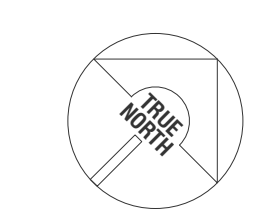


6 SUITE LAYOUT TYPE 1C  
ONE FLOOR LEVEL

13	SP	ISSUED FOR SITE INSTRUCTION E-12	APR. 18, 2023
12	SP	ISSUED FOR SITE INSTRUCTION E-10	NOV. 03, 2022
11	SP	ISSUED FOR I.F.C.	AUG. 05, 2022
10	SP	REVISED AS PER SL A10 ISSUED FOR PERMIT	OCT. 15, 2021
09	SP	ISSUED FOR PROGRESSIVE CONSTRUCTION #2	JUN. 15, 2021
08	SP	ISSUED FOR SITE INSTRUCTION E-6	JUN. 04, 2021
07	SP	ISSUED FOR PROGRESSIVE CONSTRUCTION	MAR. 26, 2021
06	SP	ISSUED FOR ADD E-5	MAR. 26, 2021
05	SP	ISSUED FOR PERMIT BUILDINGS A, B, C, D	MAR. 03, 2021
04	SP	ISSUED FOR ADD E-3	JAN. 19, 2021
03	SP	ISSUED FOR PERMIT	SEP. 28, 2020
02	SP	ISSUED FOR ADD E-2	JUN. 15, 2020
01	SP	ISSUED FOR TENDER	AUG. 02, 2019
NO.	BY	DESCRIPTION	DATE

## REVISIONS

This drawing is an instrument of service, is provided by and is the property of United Engineering Inc. The contractor must verify and accept responsibility for all dimensions and conditions on site and must notify United Engineering Inc. of any discrepancy before proceeding. United Engineering Inc. is not responsible for the accuracy of Architectural, structural, interior design, etc., on this drawing. Refer to the appropriate trade drawings before proceeding with any work. Installation must conform to all applicable codes and requirements of the authorities having jurisdiction. This drawing is not to be scaled, all symbols are graphic representations only.



**UNITED ENGINEERING INC.**  
Mechanical Electrical Consulting Engineers  
3645 Keele Street, Suite 105,  
Toronto, Ontario, M3J 1M6  
Tel: (416) 388 1995, Fax: (416) 388 1933

TITLE  
**TYPICAL SUITE LAYOUT  
ELECTRICAL**

PROJECT

**BRAMPTON STACKED  
FORESTSIDE ESTATES**  
ATTMAR + PALLESCHI DRIVE  
BRAMPTON, ONTARIO

DRAWN	CHECKED	SCALE
SP	MG	1:75
DATE	PROJECT	DRAWING
MAY, 2019	18-017	E-8
		OF 16