

# UNIT 2501 - 'THE DESERT ROSE'

## SB-12 ENERGY EFFICIENCY DESIGN MATRIX

BUILDING COMPONENT	SPACE HEATING FUEL		
	<input type="checkbox"/> GAS	<input type="checkbox"/> OIL	<input type="checkbox"/> ELECTRIC
INSULATION PSI (R) VALUE	10.56 (R60)		
CEILING W/O ATTIC SPACE	5.46 (R31)		
CEILING W/O ATTIC SPACE	5.46 (R31)		
EXPOSED FLOOR	3.87 (R22)+1.5d4		
WALLS ABOVE GRADE	R20 Blanket or R12 + R10d4		
BASEMENT WALLS	-		
BELOW GRADE SLAB ENTIRE SURFACE > 600mm BELOW GRADE	1.76 (R10)		
EDGE OF BELOW GRADE SLAB ≤ 600mm BELOW GRADE	1.76 (R10)		
HEATED SLAB ≤ 600mm BELOW GRADE	1.76 (R10)		
CONC. SLAB ≤ 600mm BELOW GRADE	1.76 (R10)		
WINDOWS & DOORS	1.6		
WINDOWS/SLIDING GLASS DOORS (MAX U-VALUE or MIN. EPI)	2.8		
SKYLIGHTS (MAX. U-VALUE)	75%		
APPLIANCE EFFICIENCY	75%		
SPACE HEATING EQUIP. (AFUE%)	75%		
DOMESTIC HOT WATER HEATER (EF)	0.94		
DWHR UNIT (%)	53.3% ON 1 SHOWERS MIN.		

AREA CALCULATIONS EL. A1'(REV)/EL. B1'(REV)	
GROUND FLOOR AREA	858 sq. ft. 855 sq. ft.
SECOND FLOOR AREA	1047 sq. ft. 1021 sq. ft.
SUBTOTAL	1905 sq. ft. 1876 sq. ft.
DEDUCT ALL OPEN AREAS	0 sq. ft. 0 sq. ft.
TOTAL NET AREA	1905 sq. ft. 1876 sq. ft.
FINISHED BASEMENT AREA	0 sq. ft. 0 sq. ft.
COVERGE	1074 sq. ft. 1071 sq. ft.
W/O UT PORCH	1125 sq. ft. 1117 sq. ft.
W/ PORCH	1125 sq. ft. 1117 sq. ft.

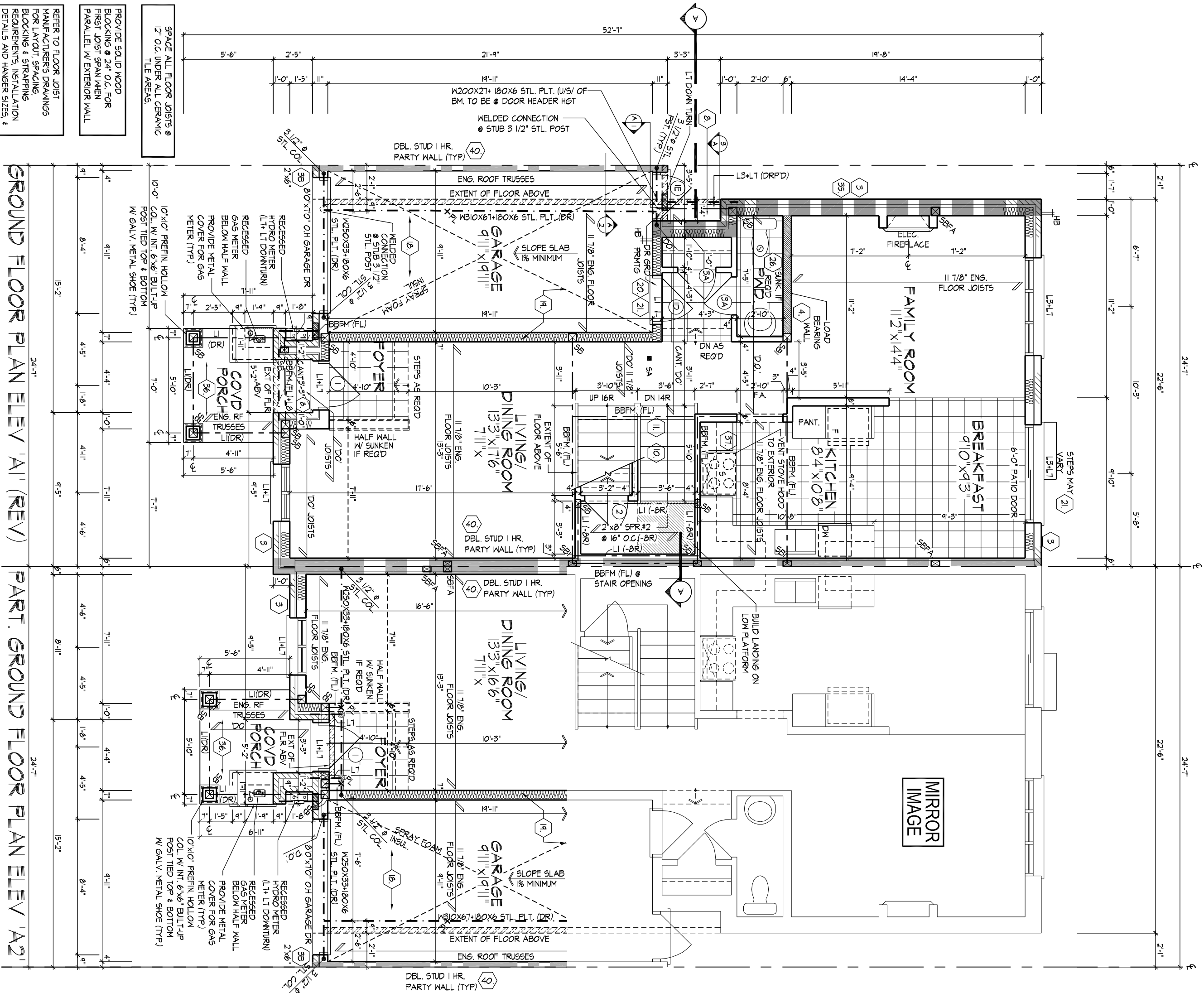
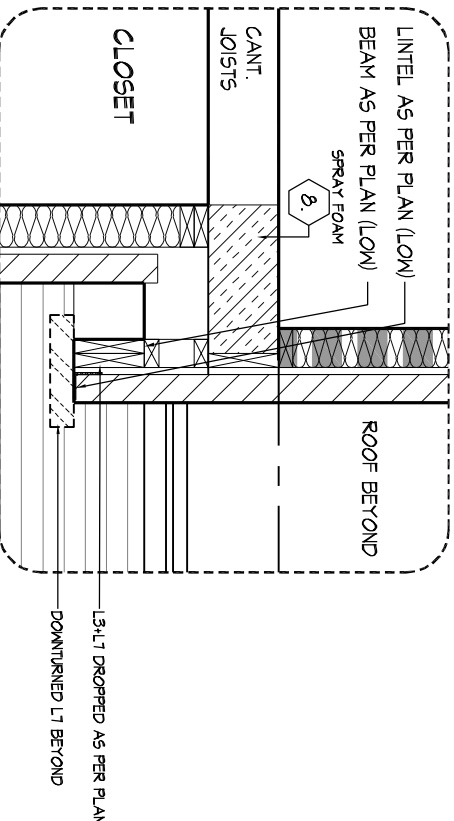
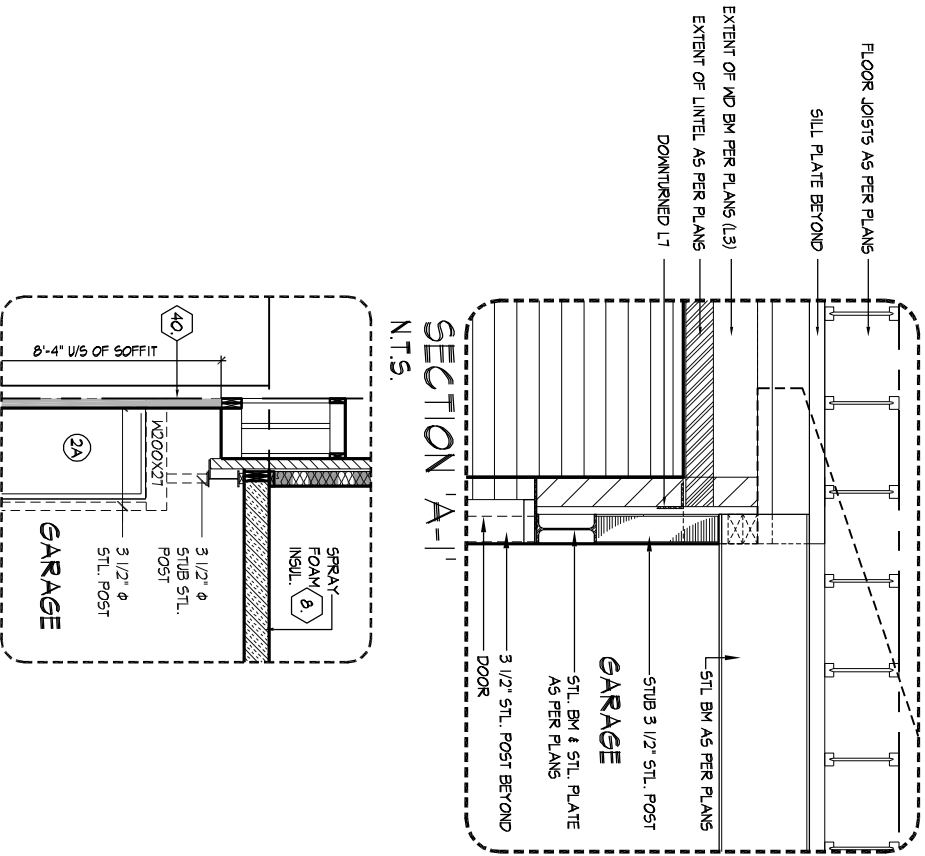
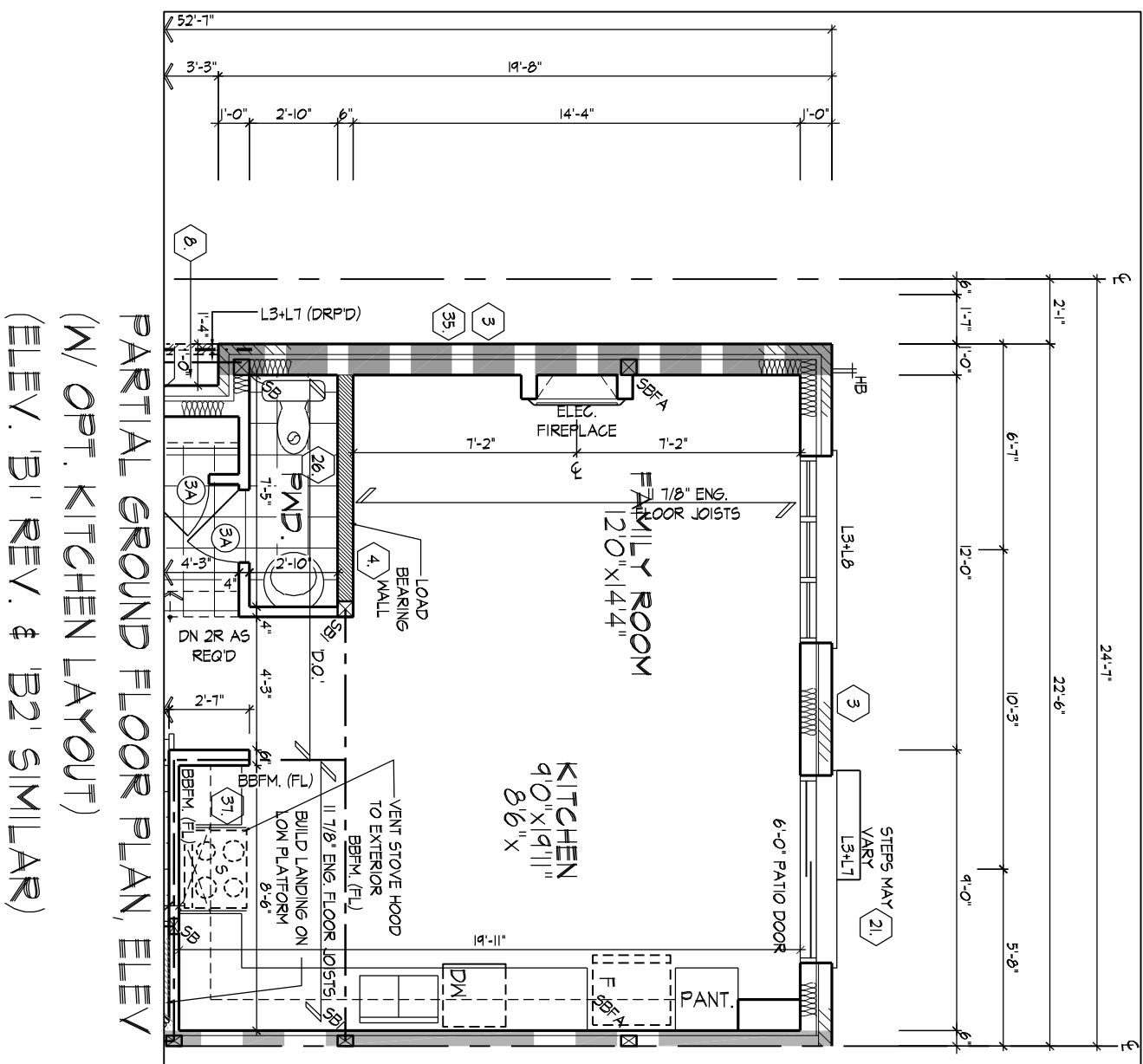
- 1 - TITLE PAGE
- 2 - BASEMENT PLANS, ELEV. 'A1' (REV.) & 'A2'
- 3 - GROUND FLOOR PLANS, ELEV. 'A1' (REV.) & 'A2'
- 4 - SECOND FLOOR PLANS, ELEV. 'A1' (REV.) & 'A2'
- 5 - PARTIAL SECOND FLOOR PLAN, ELEV. 'B1' (REV.) & 'B2'
- 6 - PARTIAL BASEMENT/GROUND FLOOR PLANS, ELEV. 'B1' (REV.) & 'B2'
- 7 - FRONT & REAR ELEVATION 'A1' & 'B1' (REV.) & 'A2' & 'B2'
- 8 - LEFT SIDE ELEV. 'A1' (REV.) & RIGHT SIDE ELEV. 'A2'
- 9 - FRONT ELEVATION 'B1' (REV.), 'B2' / CROSS SECTION 'A-A'
- 10 - LEFT SIDE ELEV. 'B1' (REV.) & RIGHT SIDE ELEV. 'B2'
- 11 - WALK-OUT DECK CONDITION
- 12 - CONSTRUCTION NOTES



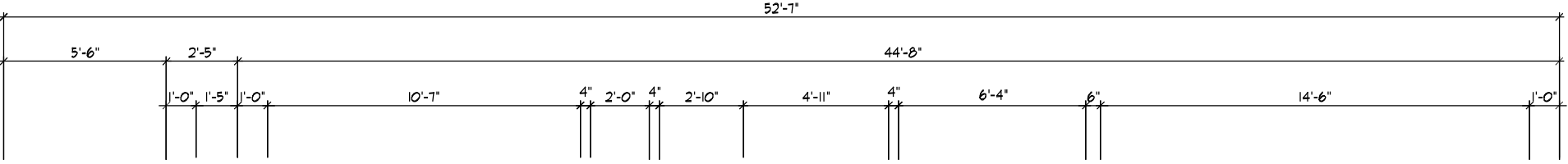
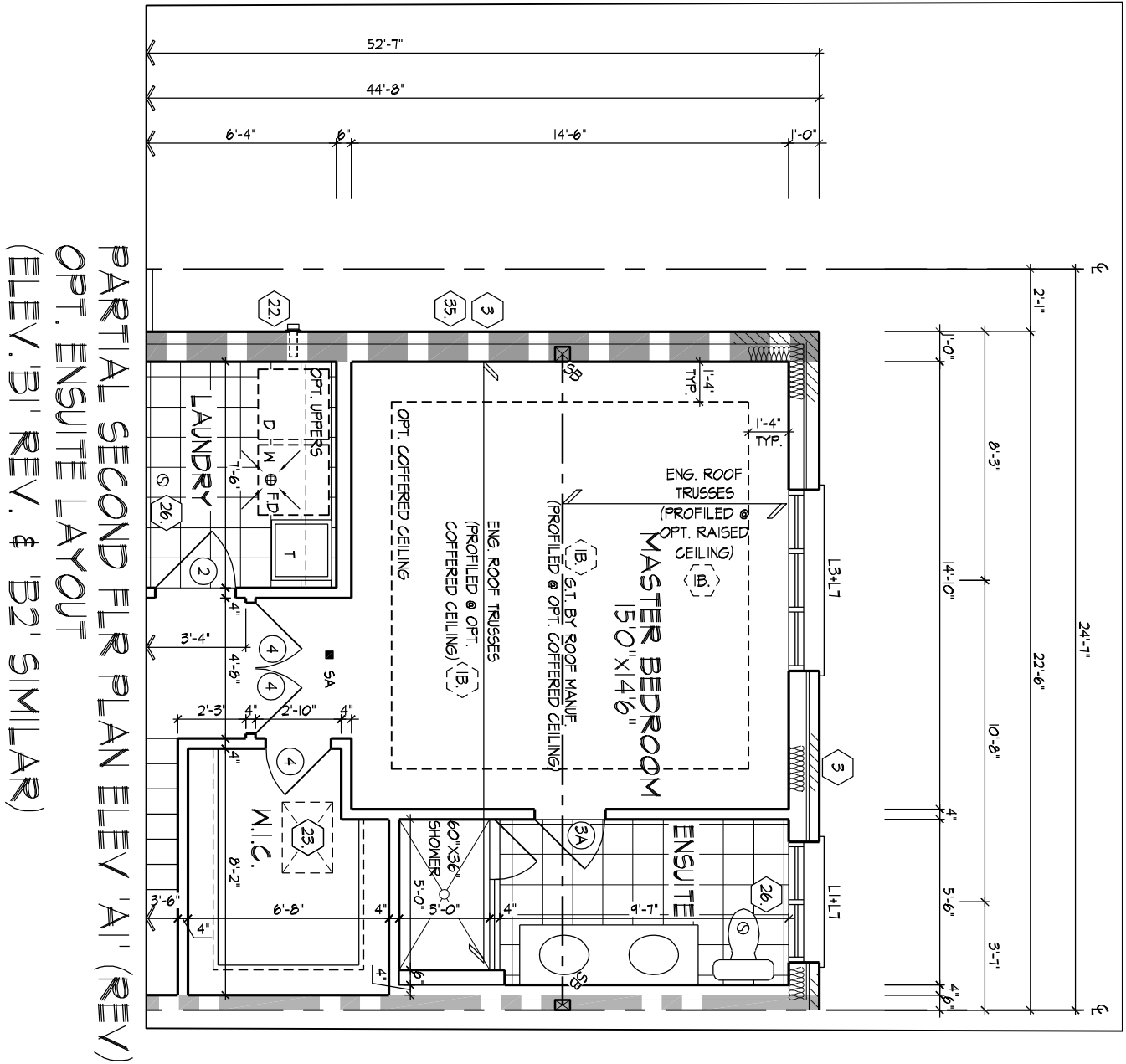
7. ISSUED FOR PERMIT	-
6. ISSUED FOR FINAL APPROVAL	2024/03/19
5. REVISED AS PER ARCHITECTURAL CONTROL COMMENTS	-
4. REVISED AS PER ENGINEER COMMENTS	2023/01/05
3. REVISED AS PER ROOF TRUSS MANUFACTURE PLANS	2022/06/14
2. REVISED AS PER FLOOR MANUFACTURE PLANS	2022/06/13
1. REVISED AS PER CLIENT'S COMMENTS	2021/09/29
REVISIONS	DATE (YYYYMMDD) BY



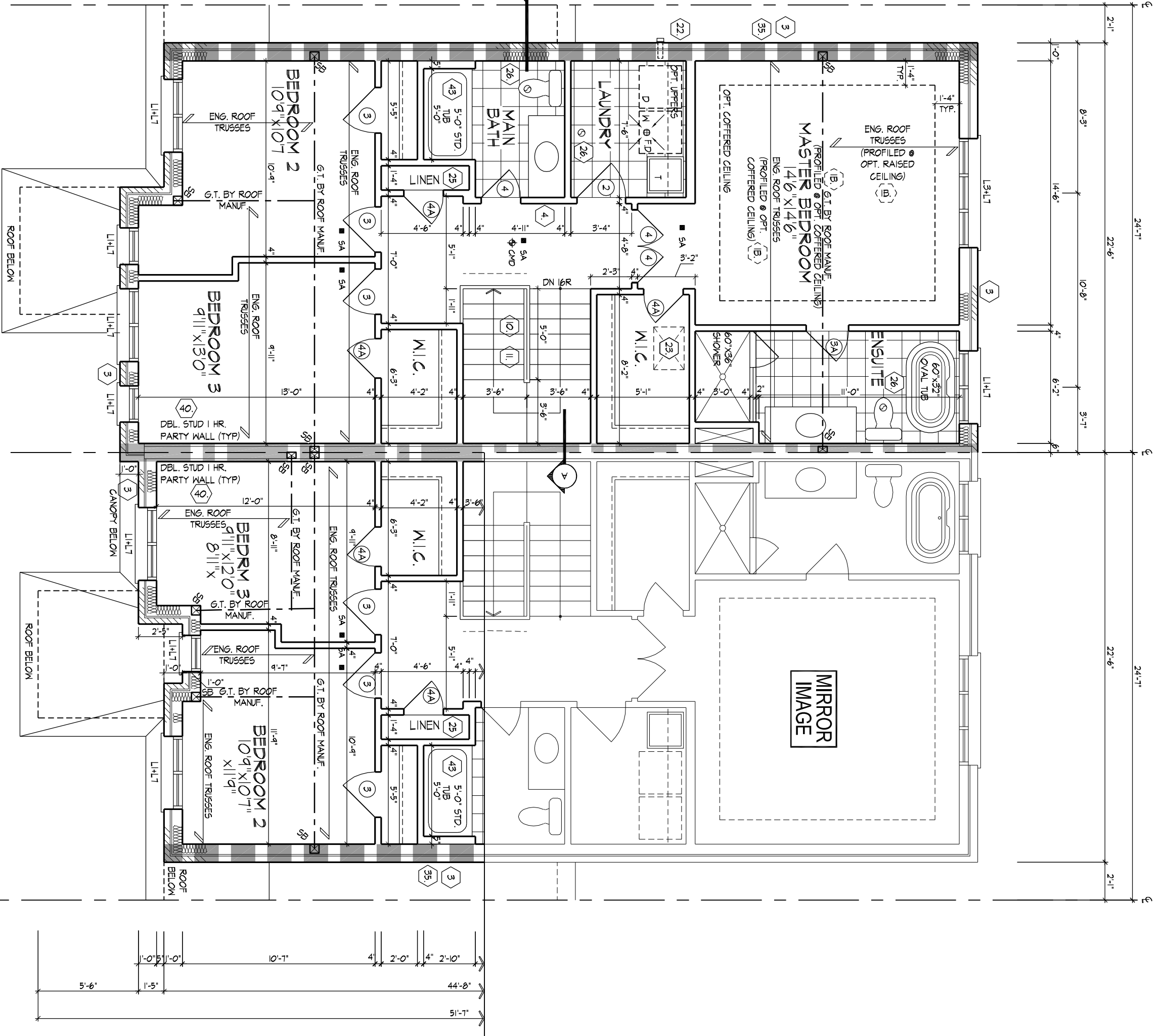




55' MIN. 2' X 6' SPT. OR 3' 2' X 4' SPT.  
55' MIN. 3' 2' X 6' SPT. OR 4' 2' X 4' SPT.  
55' MIN. 4' 2' X 6' SPT. OR 5' 2' X 4' SPT.



REFER TO ROOF TRUSSES  
MANUFACTURER'S DRAWINGS  
FOR LAYOUT, SPACING  
AND HANGER DETAILS AND  
HANGER SIZES.

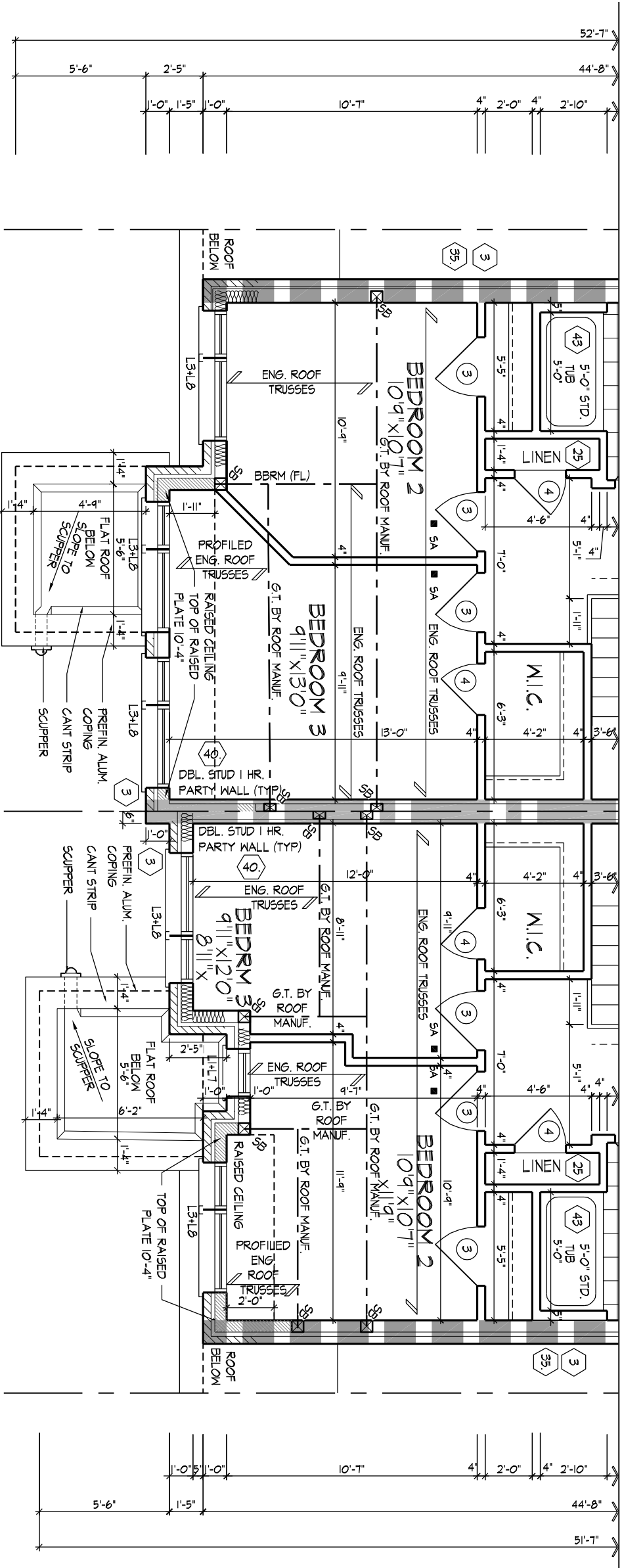


SECOND FLR PLAN ELEV 'A1' (REV)

PART. SECOND FLR PLAN ELEV 'A2'

55' MIN. 21' 2"x6" SPF OR 31' 2"x4" SPF  
55' MIN. 31' 2"x6" SPF OR 41' 2"x4" SPF  
55' MIN. 41' 2"x6" SPF OR 51' 2"x4" SPF





REFER TO SCOF TRUSS  
MANUFACTURERS DRAWINGS  
FOR LAYOUT, SPACING,  
INSTALLATION DETAILS AND  
HANGER SIZES.

REFER TO STANDARD FLOOR PLAN  
FOR COMPLETE CONSTRUCTION  
NOTES & DIMENSIONS.

## PARTIAL SECOND FLOOR PLAN, ELEV B1 (REV)

5/8" MIN. 2'x6" SFF OR 3'x4" SFF  
5/8" MIN. 3'x6" SFF OR 4'x4" SFF  
5/8" MIN. 4'x6" SFF OR 5'x4" SFF







