

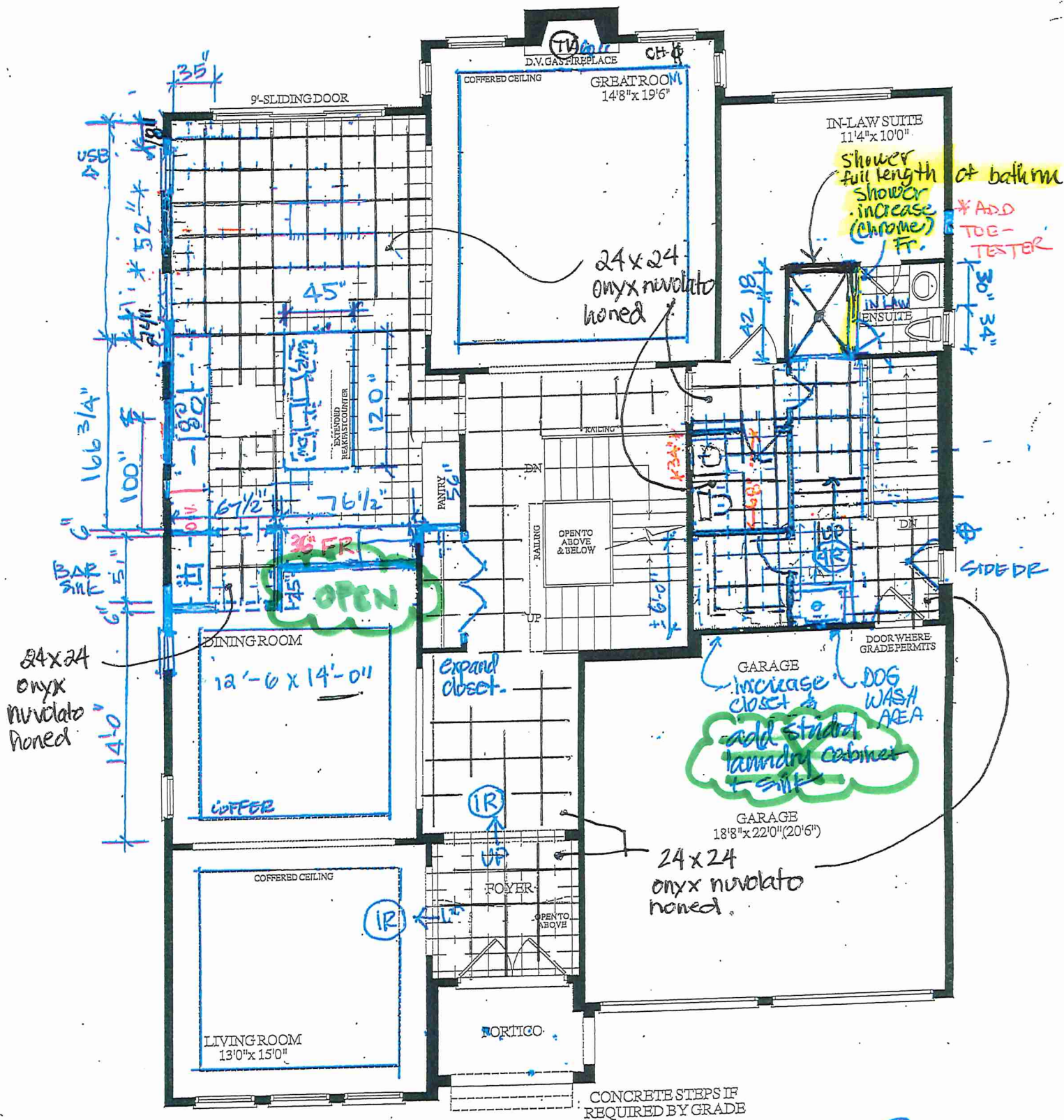
# KITCHEN

NO GAS LINE

Revised  
Aug 19, 2025

- GAS LINE TO STOVE
- POT FILLER (CAPPED R. IN ONLY)
- STD 6" EXHAUST PIPE
- STOVE CENTRE OF ISLAND (IF POSSIBLE)
- DELETE KITCHEN WINDOW

- RELOCATE SINK + D/W TO ISLAND
- BAR SINK RELOCATE TO SERVERY



MAIN LEVEL WITH  
OPT. IN-LAW SUITE  
ELEV. C

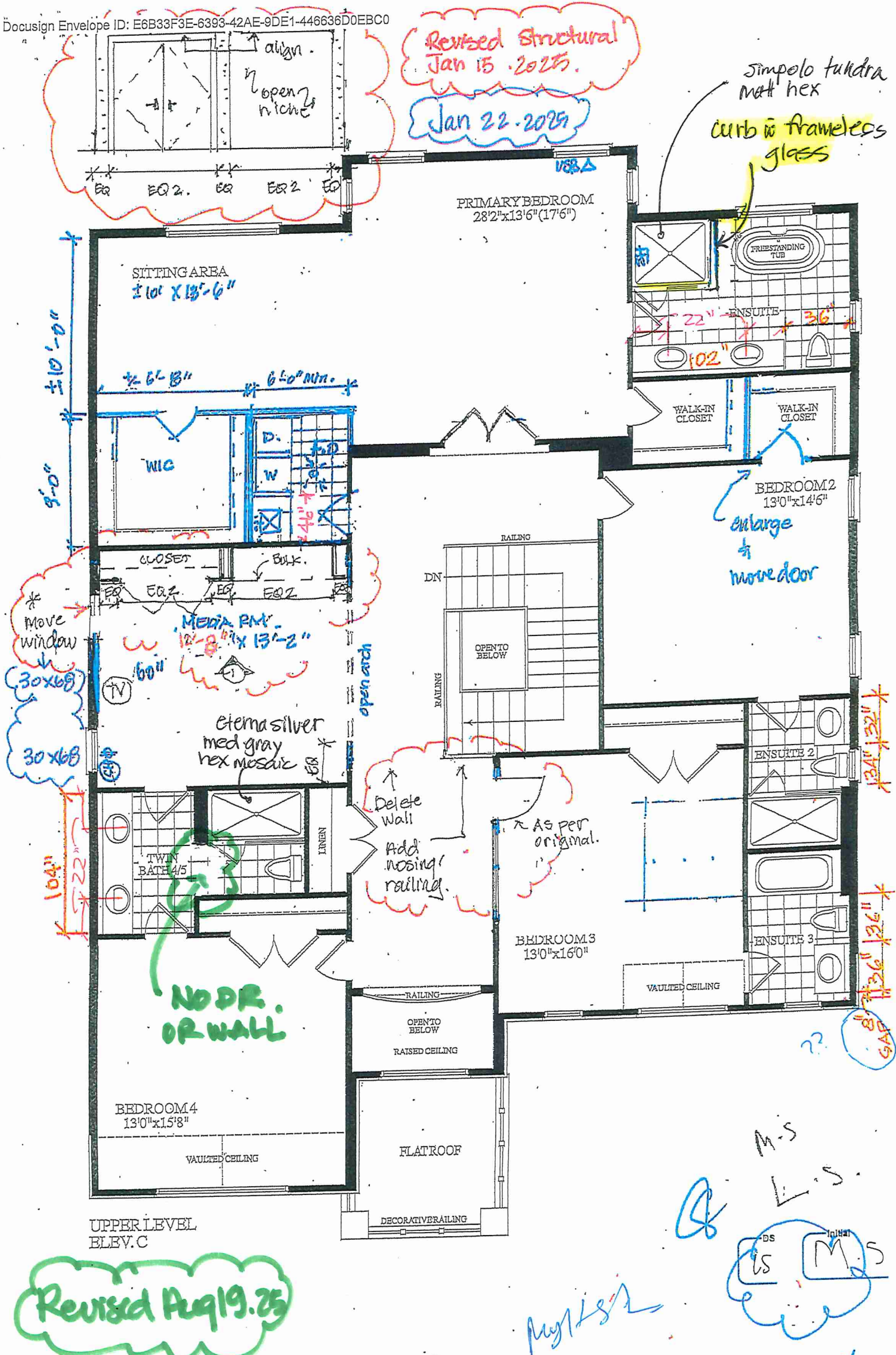
ms/13

M-S  
L-S



LOT 17 \* 50-08 EDINBURGH \* 5 BEDROOM \* EL.C \* 3445 SQ.FT





\* 8' H DOORS (STANDARD) = 20 = 9B 1/2"

Revised Aug 19, 25



LOT 17 \* 50-08 EDINBURGH \* 5 BEDROOM \* EL.C \* 3445 SQ.FT





\* INTERIOR COLOUR SCHEME \*

Purchasers	Decor Consultant	Model and Elevation	Telephone Res. / Bus	Project	Closing Date	Property
MANJIT SIDHU & LAKHVIR SINGH SIDHU	Lisa Renzetti	URGH-ELEV C-OPT MAIN W OPT 2ND W MEDIA	/	2185715 Ontario Inc.	18/03/2026	017

Page 2 of 3

Primary Ensuite

Ensuite 2

Ensuite 3

Twin Bath 4/5

Laundry Room

Kitchen/Servery

Powder

In-Law Bath

Mud Room/DogWash

Foyer

Main Hall

Great Room

Living Room

Dining Room

In Law Suite

2nd Floor Hall

Media Room

Primary Bedroom

Sitting Room

Bedroom 2

Bedroom 3

Bedroom 4

Basement Landing

Interior Paint

Description

Silver Birch (STND)

Silver Birch (STND)

Silver Birch (STND)

Silver Birch (STND)

Silver Birch (STND)

Silver Birch (STND)

Silver Birch (STND)

Silver Birch (STND)

Silver Birch (STND)

Silver Birch (STND)

Silver Birch (STND)

Silver Birch (STND)

Silver Birch (STND)

Silver Birch (STND)

Silver Birch (STND)

Silver Birch (STND)

Silver Birch (STND)

Silver Birch (STND)

Silver Birch (STND)

Silver Birch (STND)

Silver Birch (STND)

Silver Birch (STND)

Silver Birch (STND)

Cabinet

Style

\*\*SEE ATTACHED QTK PAPERWORK\*\*

\*\*SEE ATTACHED QTK PAPERWORK\*\*

\*\*SEE ATTACHED QTK PAPERWORK\*\*

\*\*SEE ATTACHED QTK PAPERWORK\*\*

\*\*SEE ATTACHED QTK PAPERWORK\*\*

\*\*SEE ATTACHED QTK PAPERWORK\*\*

\*\*SEE ATTACHED QTK PAPERWORK\*\*

\*\*SEE ATTACHED QTK PAPERWORK\*\*

\*\*SEE ATTACHED QTK PAPERWORK\*\*

\*\*SEE ATTACHED QTK PAPERWORK\*\*

Countertop

Vanilla White (STND)

Vanilla White (STND)

Maple White (STND)

Maple White (STND)

STANDARD Laminate (SEE QTK)

Everest, Jupiter (UPG) and BS

Vanilla White (STND)

Maple White (STND)

White Quartz at dog wash

NA

Counter Edge

3/4" Sqaure (STND)

3/4" Sqaure (STND)

3/4" Sqaure (STND)

3/4" Sqaure (STND)

SEE QTK

1 1/2 L mitre edge (UPG)

3/4" Sqaure (STND)

3/4" Sqaure (STND)

3/4" Square

NA

Handle / Knob

SEE QTK

SEE QTK

SEE QTK

SEE QTK

SEE QTK

SEE QTK

SEE QTK

SEE QTK

NA

NA

Appliance Opening/Dimension

Fridge Size SEE SPECS

Range SEE SPECS

Built-Ins SEE QTK

Microwave SEE SPECS

Hood Fan SEE SPECS

Exhaust Opening 6" 8"

Dishwasher Cabinet Std 24in Opening

Fireplace

Fireplace STANDARD

Fireplace N/A

Location Flooring HARDWOOD

Location Flooring N/A

Style STANDARD

Style N/A

Finish STANDARD

Finish N/A

Marble STANDARD

Marble N/A

Hearth NA

Hearth N/A

Page 2 of 3

Decor Consultant:

Lisa Renzetti

Purchaser:

MANJIT SIDHU

Purchaser:

LAKHVIR SINGH SIDHU

Vendor:

2185715 Ontario Inc.

Appliances Submitted  
Aug 19. 25.



NOIR™ SINGLE WALL OVEN WITH  
MULTIMODE® TRUE CONVECTION, FLAT-  
TINE RACKS

JOESC530RM

Signature Features

MULTIMODE® TRUE  
CONVECTION  
SYSTEM

Steady heat generated by a 3,200W element is circulated by whirling metal blades, weaving around every flat tine. Wield your cooking prowess from marbled meats to succulent roasts.

SMART WALL OVEN

Fluently control your wall oven—whether in the kitchen or not. The JennAir® App empowers you to remotely control and monitor the oven, prompts you when it's time to tend to your dish or you can select from chef-inspired recipes designed to provide you with effortlessly delicious results. Use simple voice commands with your Google Assistant or Alexa-enabled device\* for an even more seamless cooking experience.

TEMPERATURE  
PROBE

Know when dinner is done without ever opening the door. Internal food temperature readings are visible on the LCD screen or directly in the app.\*

\*Appliance must be set to remote enable. WiFi & App required. Features subject to change. For details and privacy info, visit [jennair.com/connect](http://jennair.com/connect).

MULTIMODE® TRUE  
CONVECTION  
SYSTEM

Steady heat generated by a 3,200W element is circulated by whirling metal blades, weaving around every flat tine. Wield your cooking prowess from marbled meats to succulent roasts.

SMART WALL OVEN

Fluently control your wall oven—whether in the kitchen or not. The JennAir® App empowers you to remotely control and monitor the oven, prompts you when it's time to tend to your dish or you can select from chef-inspired recipes designed to provide you with effortlessly delicious results. Use simple voice commands with your Google Assistant or Alexa-enabled device\* for an even more seamless cooking experience.

TEMPERATURE  
PROBE

Know when dinner is done without ever opening the door. Internal food temperature readings are visible on the LCD screen or directly in the app.\*

\*Appliance must be set to remote enable. WiFi & App required. Features subject to change. For details and privacy info, visit [jennair.com/connect](http://jennair.com/connect).

7.8 FULL COLOR  
ULTRA WIDE LCD  
DISPLAY WITH  
CULINARY CENTER

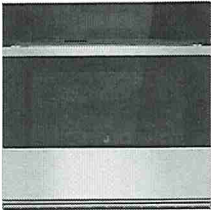
Visually vibrant. This highly interactive, full-color LCD display allows you to navigate effortlessly through settings and the algorithms of JennAir® Culinary Center recipes.

AIR FRY

Achieve crispy, yet juicy results on your favorites, from fresh vegetables to guilty-pleasure fried foods. Use Air Fry to circulate hot air around the tray to crisp food using little to no additional oil.

VERSATILE COOKING  
MODES

Uncompromising results, untroubled process. Rapid Preheat Mode lets you bake on a single rack without the wait. Dough rises quickly and evenly with Proofing mode, and the Keep Warm™ setting lets you serve your entire menu at the same time.



Dimensions

- Depth: 59.06 cm
- Depth Closed Excluding Handles: 61.76 cm
- Depth Closed Including Handles: 66.99 cm
- Depth Excluding Doors: 58.42 cm
- Depth With Door Open 90 Degree: 115.41 cm
- Gross Weight: 85.28 kg
- Height: 75.88 cm
- Net Weight: 83.01 kg
- Oven Interior Depth: 48.26 cm
- Oven Interior Height: 45.72 cm
- Oven Interior Width: 63.50 cm
- Width: 76.20 cm
- Common Size: 76.20 cm
- Capacity: 141.50 l

Controls

- Control Type: Tap Touch
- Display Color: Full Color

Technical Specifications

Details

- Cooktop Combinations:
- JEC3430

Details

- Oven Selections:
- Assisted Cooking

LOT 17



- JEC3536
- JEC4424
- JEC4430
- JEC4536
- JGC1530
- JGC1536
- JGC2530
- JGC2536
- JGC7530
- JGC7636
- JIC4430
- JIC4530
- JIC4536
- JIC4715GS
- JIE4115GS

Design Expression: NOIR™

Flush Installation Approved: Yes

Fuel Type: Electric

LP Convertible: No

Oven Configuration: Single Oven

Oven Type: Single

Power On Indicator Light: Yes

Delay Clean: Yes

Oven Automatic Shut-Off: Yes

- Audible Signal
- Bake
- Broil
- Cancel/Off
- Clock
- Control Lock
- Cook Time Indicator
- Cook and Hold
- Delay Start
- Favorites
- Language Conversion
- Proofing
- Rapid Preheat
- Sabbath Mode
- Slow Cook
- Start Time
- Stop Time
- Temperature Conversion
- Temperature Probe
- Temperature-Sensor Baking
- Timer
- Warm Hold

Electronic Display Type: 4.3-Inch Full Color LCD

Language Conversion: English/French

Light Control: Oven Light Touch Pad

Electrical

---

Power Cord Included: No

Watts: 4

Amps: 20

Hz: 60

Volts: 240

Oven Cavity Details

Bake Element Power: 2800W/2427W

Broiler Element Power: 4000W

Broiler Location: Top of Oven

Convection Element Type: Single Fan

Convection Element Power:

- 3200 W
- 3200 W

Convection Functions: Bake Broil Roast Upper

Door Broil Position: Closed

Hidden Bake Element: Yes

Installable Under Cooktop: Yes

Interior Coating: Porcelain

Light Type: Halogen

Number of Bake Elements: 1

Number of Broil Elements: 1

Number of Oven Lights: 2

Number of Oven Racks: 3

Number of Rack Guides: 6

Oven Cleaning Type: Self-Cleaning

Oven Cooking System: MultiMode® True Convection

Self-Cleaning Oven Racks: No

Certifications

ADA Compliant: ADA Height and Side and Front Reach Compliant

CUL: Yes

Prop 65: Standard

LOT 17



Star K Certified: Yes

UL: Yes

Smart Compatibility

---

Connectivity: No

Smart Appliance: Yes

Works With: No

Exterior Details

---

Door Lock: Yes

Door Type: Metal & Glass

®/™ © 2025 JennAir. All rights reserved. Specifications subject to change without notice.

LOT 17





# 36" NOIR™ GAS PROFESSIONAL-STYLE RANGETOP

## Signature Features

JGCP436HM

### CAST IRON GRATES

Robust geometric grates form one graceful surface, crafted to withstand heavy woks and cookware.

### CAST IRON GRATES

Robust geometric grates form one graceful surface, crafted to withstand heavy woks and cookware.

### 18,000 BTU DUAL-STACKED POWERBURNER

This 18,000 BTU dual-stacked PowerBurner can handle high-powered cooking while still being gentle enough for delicate simmering with turndown of 1,650 BTU.

### ELECTRONIC IGNITION WITH FLAME-SENSING™ REIGNITION

Burnout banned. If a sudden draft blows out a flame, intelligent Flame-Sensing™ reignition automatically sparks it back to life.

### HALO-EFFECT KNOBS

A halo of luminary LEDs glows softly when the burner is lit or the oven is on.

### 20,000 BTU DUAL-STACKED POWERBURNER

This 20,000 BTU dual-stacked PowerBurner can handle high-powered cooking while still being gentle enough for delicate simmering with turndown of 1,650 BTU.

### DUAL-STACKED POWERBURNERS

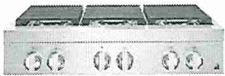
Two stacked, symmetrical flames bloom and retreat at your inclination, offering total control over heat levels. High-heat searing and wok cooking. Low, slow simmer and melt. Infinite intermediate settings satisfy every appetite.

### NOIR™ DESIGN EXPRESSION

Sculpted in stainless steel, the NOIR™ Design Expression features structured grates and an illusive badge. Explore the artful mystery of a minimalist design that rejects dated ideals of beauty.

### 18,000 BTU DUAL-STACKED POWERBURNER

This 18,000 BTU dual-stacked PowerBurner can handle high-powered cooking while still being gentle enough for delicate simmering with turndown of 1,650 BTU.



## Dimensions

- Depth: 69.85 cm
- Gross Weight: 63.50 kg
- Height: 18.89 cm
- Net Weight: 53.52 kg
- Width: 90.80 cm
- Common Size: 36

## Controls

- Control Type: Knobs
- Control Location: Front
- Electrical

208V Compatible: No

Power Cord Included: Yes

## Technical Specifications

### Cooktop Details

- Cooktop Surface Color: Black
- Cooktop Surface Material: Porcelain Coated Steel
- Griddle Included: N/A
- Heating Element On Indicator Light: No
- Hot Surface Indicator Light: No
- Ignition Type: Flame-Sensing™ Re-ignition
- Digital Display: No

### Element/Burner Details

- Center Front Element-Burner Type: Dual
- Center Rear Element-Burner Power: 9000BTU
- Center Rear Element-Burner Type: Dual
- Cooktop Element Style: Sealed Burner
- Cooktop Type: Rangetop
- Left Front Element-Burner Power: 20,000 BTU
- Left Front Element-Burner Type: Dual

LOT 17



Installs Over Built-In Oven: No

Exterior Details

Knob Type: Metal

Knob Color: Stainless Steel

Details

Cooktop Configuration: All Burners

Design Expression: NOIR™

Digital Display: No

Fuel Type: Gas

Installs Over Built-In Oven: No

LP Convertible: Yes - Kit Included

Power Outage Compatible: Yes (Gas Cooktop Burners Only)

Certifications

ADA Compliant: ADA Height and Operation Compliant

Prop 65: Standard

UL: Yes

Element/Burner Details

Center Front Element-Burner Power: 20,000 BTU

Left Rear Element-Burner Power: 18,000 BTU

Left Rear Element-Burner Type: Dual

Number of Cooking Element-Burners: 6

Power Boost: No

Right Front Element-Burner Power: 20,000 BTU

Right Front Element-Burner Type: Dual

Right Rear Element-Burner Power: 18,000 BTU

Right Rear Element-Burner Type: Dual

Automatic Pan Detection: No

Ventilation Details

Downdraft Vent: No

Grate Details

Grate Details:

- Continuous
- Dishwasher Safe
- Individual
- Matte Finish
- Porcelain Coated Cast Grates





NOIR™ 30" SINGLE WALL SPEED OVEN

JOEMC130RM

Signature Features

7.8 FULL COLOR  
ULTRA WIDE LCD  
DISPLAY WITH  
CULINARY CENTER

Visually vibrant. This highly interactive, full-color LCD display allows you to navigate effortlessly through settings and the algorithms of JennAir® Culinary Center recipes.

CONVECTION &  
MICROWAVE  
COMBINATION  
COOKING

Let your appetite run wild—create oven-caliber baked goods and meals quickly when you broil, bake or warm with convection and microwave energy combined.

1,200-WATT  
CONVECTION  
ELEMENT

This 1,200-watt element surrounds dishes with circulating, uniform heat until food is baked to your satisfaction.

SMART WALL OVEN

Fluently control your wall oven—whether in the kitchen or not. The JennAir® App empowers you to remotely control and monitor the oven, prompts you when it's time to tend to your dish or you can select from chef-inspired recipes designed to provide you with effortlessly delicious results. Use simple voice commands with your Google Assistant or Alexa-enabled device\* for an even more seamless cooking experience.

STAINLESS STEEL  
MICROWAVE  
INTERIOR

Luminous steel coats the entire microwave interior, reflecting its intrinsic beauty while you brown, bake and grill.

900-WATT  
MICROWAVE  
ELEMENT

Harness 900 watts of microwave energy to rapidly cook and reheat a variety of foods.

SPEED COOK

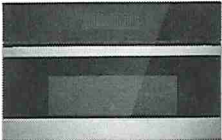
Three potent cooking methods converge to deliver an oven-caliber bite: steady convection baking, microwave speed and intense broiler caramelization.

1.4 CU. FT.  
MICROWAVE  
CAPACITY

1.4 cu. ft. of microwave capacity fits up to a 9" x 13" glass dish. There's room for whatever you or your guests are craving.

SENSOR COOKING

An intuitive sensor responds to humidity levels inside the microwave, altering time and power settings for crave-worthy results.



Technical Specifications

Exterior Details

Cabinet Color: Stainless Steel

Handle Color: Stainless Steel

Features

Microwave Features:

- Broil Element
- Convection Cooking
- Sensor Cooking
- Smart Appliance
- Stainless Steel Cavity
- Stainless Steel Handle

Details

Design Expression: NOIR™

LOT 17



## Undercounter Dishwasher

### PRODUCT MODEL NUMBERS

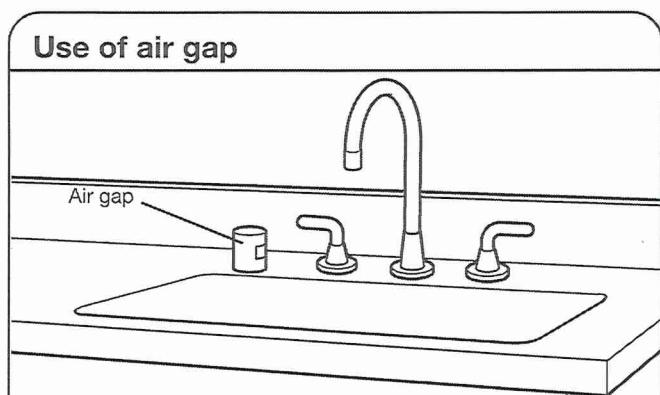
JDAF3924RX      JDAF5924RL      JDAF5924RM  
JDAF5924RX

### DRAIN REQUIREMENTS

- A new drain hose is supplied with your dishwasher. If drain hose is not long enough, use a drain hose extension with a maximum length of 12 ft (3.7 m).
- Make sure to connect drain hose to waste tee or disposer inlet above drain trap in house plumbing and 20" (508 mm) minimum above the floor. It is recommended that the drain hose either be looped up and securely fastened to the underside of the counter or be connected to an air gap.

**IMPORTANT:** This product is not equipped with a high loop on the side of the dishwasher. The installer is responsible for adding a high loop in the adjacent cabinet. A high loop is required if the dishwasher will drain into a floor drain. This prevents water draw off from the dishwasher during operation. When the drain is connected to a sink drain, counter-top air-gap or disposer, the high loop is generally not required. An check valve internal to the drain prevents back-flow into the dishwasher.

- Make sure to use an air gap if the drain hose is connected to house plumbing lower than 20" (508 mm) above subfloor or floor.



- If required, the air gap should be installed in accordance with the air gap installation instructions. When you are connecting the air gap, a rubber hose (not provided) will be needed to connect to the waste tee or disposer inlet.
- Use 1/2" (13 mm) minimum I.D. drain line fittings.

### WATER SUPPLY REQUIREMENTS

- This dishwasher maybe fitted with a smart inlet hose with a water cut off valve. Do not cut the water inlet hose for any reason, to install, adapt or shorten.
- This dishwasher has a water heating feature and also requires a connection to a hot water supply line.
- A hot water line with 20 psi to 120 psi (138 kPa to 862 kPa) water pressure can be verified by a licensed plumber.
- 120°F (49°C) water at dishwasher.
- 3/8" (95 mm) O.D. copper tubing with compression fitting or flexible braided water supply line.

Because Whirlpool Corporation policy includes a continuous commitment to improve our products, we reserve the right to change materials and specifications without notice.

W11589944C

Dimensions are for planning purposes only. For complete details, see Installation Instructions packed with product. Specifications subject to change without notice.

- Included water inlet hose with Leak Detection System for some models.
- Included 3/8" (9.5 mm) Compression x 3/4" (19 mm) Water inlet adapter (only for models with Leak Detection System).
- If installed in new construction, make sure the house water supply lines have been flushed prior to connecting the dishwasher to remove any debris that may exist in the supply line.

### ELECTRICAL REQUIREMENTS

Be sure that the electrical connection and wire size are adequate and in conformance with the National Electrical Code, ANSI/NFPA 70 - latest edition, and all local codes and ordinances.

For a fee, a copy of the above code standards can be obtained from:

National Fire Protection Association  
1 Batterymarch Park  
Quincy, MA 02169-7471

#### You Must Have:

- 120 V, 60 Hz, AC only, 15 A or 20 A, fused electrical supply.
- Copper wire only.
- A maximum of 2 field wiring supply conductors (12 AWG largest size) plus 1 grounding conductor are permitted in the terminal box.

#### We Recommend:

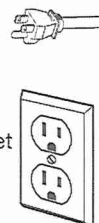
- Install the dishwasher on a circuit with appropriate interrupter per your local code. The dishwasher is compatible with timed delay fuses, standard circuit breakers, and GFCI and AFCI circuit breakers.

#### Circuit Requirement:

- The dishwasher may be installed on the same circuit as a garbage disposal providing that the branch circuit cannot exceed rated circuit load and must comply with all governing codes and regulations such as but not limited to National Electrical Code, ANSI/NFPA 70 - latest edition.
- No electrical connections other than the dishwasher power and ground connections can be made inside of the dishwasher junction box.

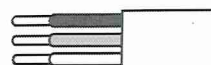
#### If Connecting Dishwasher with a Power Cord:

- Use UL Listed power cord kit marked for use with dishwasher. See the "Tools and Parts" section at the front of the Owner's manual for part details and orders.
- Plug into a grounded 3 prong outlet. Outlet must meet all local codes and ordinances.



#### If Connecting Dishwasher with Direct Wiring:

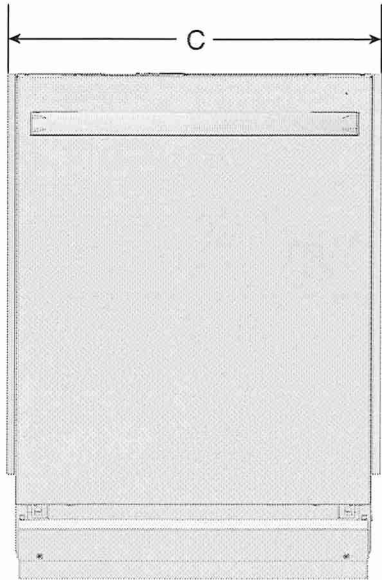
- Use flexible, armored, or nonmetallic sheathed copper wire with grounding wire that meets the wiring requirements for your home and local codes and ordinances.
- Use only the supplied plastic cable fittings for flexible and non-metallic sheathed wiring (Romex, etc.). Do not use metallic strain reliefs for these wire constructions.
- Use a UL-listed/CSA-approved metallic strain relief for armored cable installations (21 mm diameter). Using the strain relief's manufacturer installations instructions.



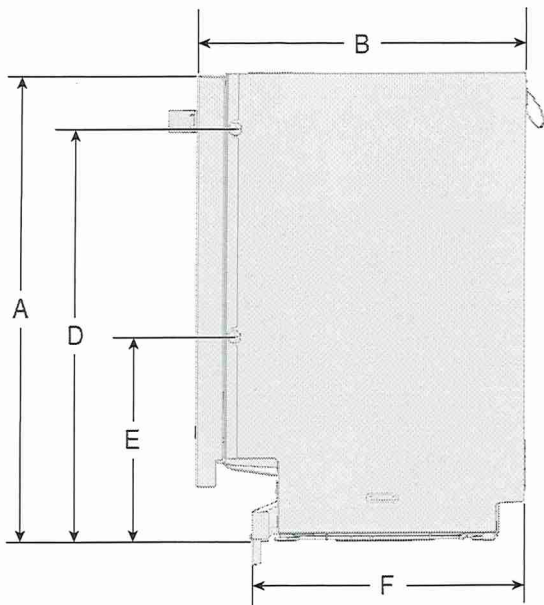
LOT 17



PRODUCT DIMENSIONS

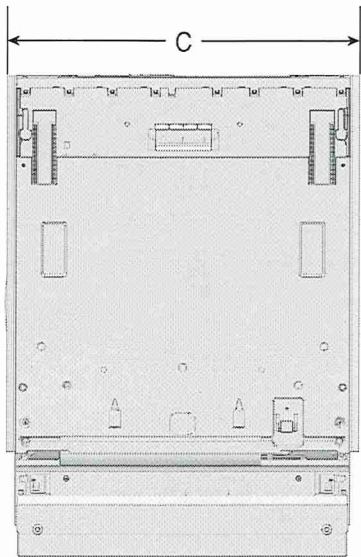


C. 23<sup>9</sup>/<sub>16</sub>" (599 mm)

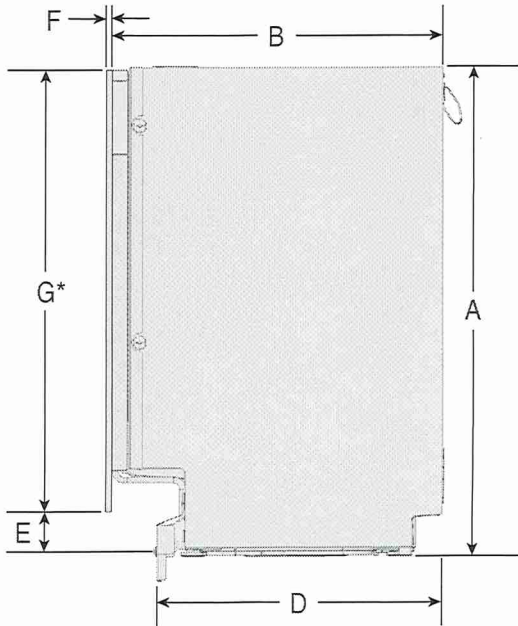


A. 32<sup>1</sup>/<sub>4</sub>"-35<sup>7</sup>/<sub>16</sub>" (820-900 mm)  
B. 22<sup>5</sup>/<sub>8</sub>" (574 mm)  
D. 28<sup>3</sup>/<sub>8</sub>" (721 mm)  
E. 14<sup>1</sup>/<sub>16</sub>" (358 mm)  
F. 18<sup>3</sup>/<sub>4</sub>" (477 mm)

PRODUCT DIMENSIONS (FOR PANEL READY MODELS)



C. 23<sup>9</sup>/<sub>16</sub>" (599 mm)



A. 32<sup>1</sup>/<sub>4</sub>"-35<sup>7</sup>/<sub>16</sub>" (820-900 mm)  
B. 21<sup>7</sup>/<sub>8</sub>" (555 mm)  
D. 18<sup>3</sup>/<sub>4</sub>" (477 mm)  
E. E = A - G  
F. 11<sup>1</sup>/<sub>16</sub>"-1<sup>3</sup>/<sub>4</sub>" (18-45 mm)  
G. 28<sup>3</sup>/<sub>8</sub>"-29<sup>5</sup>/<sub>16</sub>" (720-760 mm)

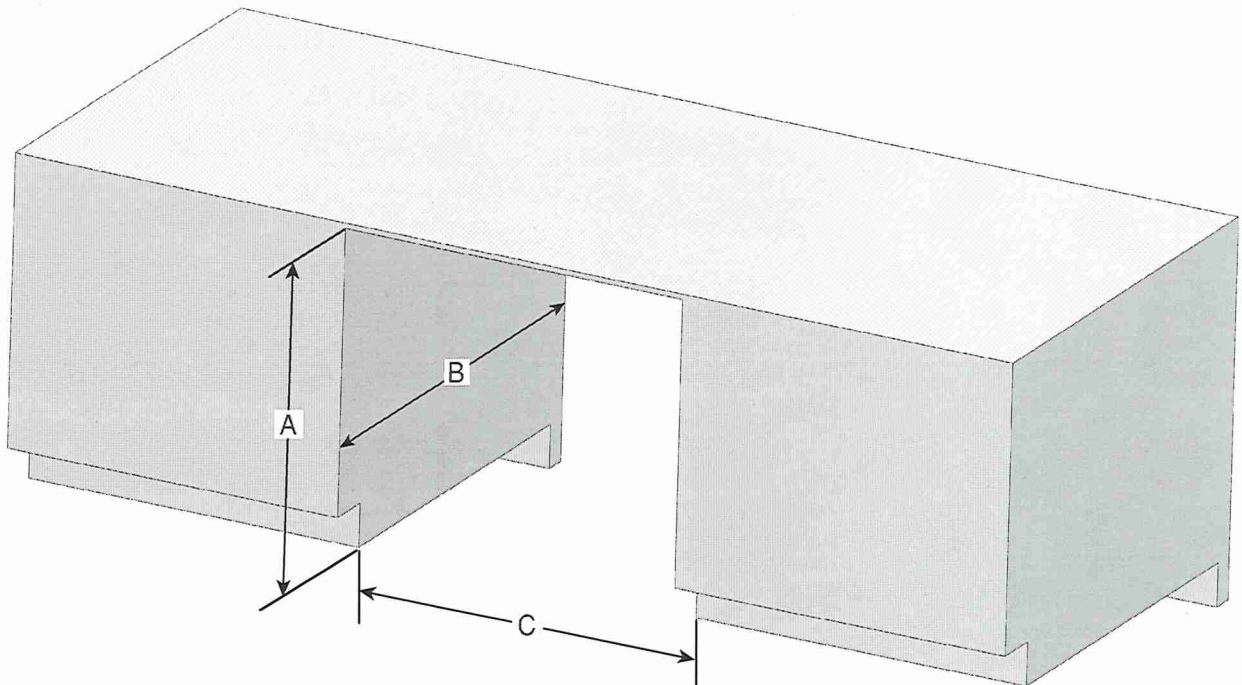
**\*NOTE:** If a custom toe kick is desired to be installed, adjust the thickness of the custom panel to make it flush with the cabinet toe kick. Product's original metal toe kick must remain even if custom toe kick is installed.

Because Whirlpool Corporation policy includes a continuous commitment to improve our products, we reserve the right to change materials and specifications without notice.

Dimensions are for planning purposes only. For complete details, see Installation Instructions packed with product. Specifications subject to change without notice.

LOT 17

## CABINET OPENING DIMENSIONS



- A.  $32\frac{1}{4}"$ - $35\frac{7}{16}"$  (820-900 mm) measured from the lowest point on the underside of the countertop.
- B. 24" (609.6 mm) Minimum
- C.  $23\frac{5}{8}"$  (600 mm) Minimum, measured from narrowest point of opening.

Because Whirlpool Corporation policy includes a continuous commitment to improve our products, we reserve the right to change materials and specifications without notice.

Dimensions are for planning purposes only. For complete details, see Installation Instructions packed with product. Specifications subject to change without notice.

LOT 17





RISE™ 72” COUNTER-DEPTH FRENCH DOOR REFRIGERATOR WITH OBSIDIAN INTERIOR

JFFCC72EHL

Signature Features

OBSIDIAN INTERIOR

Showcases food items throughout the refrigerator, and provides a sharper contrast than white interiors. Includes coordinating crisper drawers and freezer.

REMOTE ACCESS

Allows monitoring and adjustment of basic refrigerator functions such as refrigerator and freezer temperatures through an app for iOS or Android devices.

72-INCH HEIGHT

Fills the 3-inch gap traditional 69-inch tall refrigerators leave under a standard cabinet.

CINEMATIC LIGHTING

Multiple strips of LED lights inside the refrigerator compartment, freezer compartment and interior drawers minimize shadows and evenly distribute light throughout the refrigerator.

ADJUSTABLE, CLEAR GLASS SHELVES

Glass shelves complement the LED lighting for exceptional clarity that allows more light to fill the interior. The front of the shelf has metal trim that accents the Obsidian interior.

ADJUSTABLE DOOR BINS WITH METAL ACCENTS

Refrigerator door bins can be positioned to accommodate a variety of container sizes.

TWINFRESH™ CLIMATE CONTROL SYSTEM

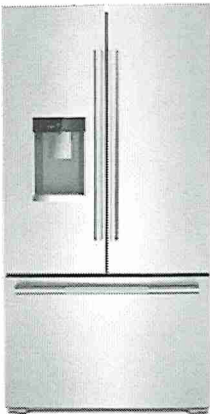
Features separate evaporators in the refrigerator and freezer compartments that allow independent temperature control, allowing two distinct environments for fresh and frozen foods.

COUNTER DEPTH DESIGN

Add additional kitchen space with styling that fits virtually flush with the countertop.

RISE™ DESIGN EXPRESSION

Forged for an era of striking proportions, robust lines of the RISE™ Design Expression draw the eye to its bold, professional-style design. An asymmetrical, diamond-knurled texture wraps around a strong, postured handle that is meant to be grasped.



Dimensions

Cabinet Width: 90.80 cm
Depth Closed Excluding Handles: 74.46 cm
Depth Closed Including Handles: 79.38 cm
Depth With Door Open 90 Degree: 111.76 cm
Depth Excluding Doors: 62.55 cm
Gross Weight: 171.00 kg
Freezer Capacity Volume: 178.29 l
Height: 182.72 cm
Height To Top Of Cabinet: 180.18 cm
Height To Top Of Door Hinge: 182.72 cm
Net Weight: 165.56 kg
Total Refrigerator Capacity Volume: 673.54 l
Refrigerator Capacity Volume: 17-1/2

Technical Specifications

Details

Advance Foam Insulation: N/A
Design Expression: RISE™
Door Style Configuration: French Door
Installation Configuration: Freestanding
Refrigerator Type: French Door
Refrigeration Configuration: Refrigerator
Installation Option: Freestanding

Exterior Details

Cabinet Color: Grey
Cabinet Finish: Textured

Dispenser Details

Dispenser Pad Color: Grey
Dispenser Type: Exterior Water Only

Filter Details

Fresh Flow Air Filter Included: No
Water Filter Indicator/Reset: Yes
Produce Preserver: Yes
Water Filter Location: Interior
Water Filter Part Number: EDR2RXD1

Certifications

LOT 17

Counter Depth: Yes	ADA Compliant: No	Width: 90.80 cm
Door Color: Stainless Steel	CEE Tier Rating: Not Rated	Depth: 74.45 cm
Door Finish: Smooth	Prop 65: Standard	Capacity: 673.54 l
Door Opening Direction: N/A	UL: Yes	Controls
Door Style: Contour	Freezer Details	
Handle Color: Stainless Steel	Freezer Drawer/Basket:	Automatic Defrost: Yes
Handle Material: Metal	<ul style="list-style-type: none"><li>1 Half Width Lower Plastic</li><li>1 Half Width Upper Plastic</li></ul>	Control Location: Side Door
Handle Type: Reach-Through Handle	Freezer Lighting: LED	Control Lockout: No
Hidden Hinge: No	Freezer Shelves: 1 Adjustable Partial-Width	Cooling Type: Dual Evaporator
Reversible Door: No	Freezer Door Type: Pull-Out	LCD Touch Screen: No
Base Grille Color: Black	Smart Compatibility	Door Ajar/Open Alarm: Yes
Refrigerator Details	Connectivity:	Max Cool/Fast Cool: Yes
Conventional Shelves:	<ul style="list-style-type: none"><li>Android</li><li>iOS</li></ul>	Sabbath Mode: Yes
<ul style="list-style-type: none"><li>1 Slide-Out Glass</li><li>2 Adjustable Full-Width Glass</li></ul>	Smart Appliance: Yes	Electrical
Humidity-Controlled Crispers: 2 Half-Width	Works With:	Amps: 15
Liner Finish: Obsidian(MetallicBlack)	<ul style="list-style-type: none"><li>App</li><li>Remote Access</li><li>WiFi</li></ul>	Volts: 115
Non Climate Control Drawers: 1 Full-Width	Icemaker Details	
Number of Doors: 3	Icemaker: Factory Installed	
Number of Interior Shelves: 3	Icemaker Location: Refrigerator Door	
Refrigerator Door Bins:	Types of Ice: Cubed	
<ul style="list-style-type: none"><li>3 Adjustable Partial-Width Gallon</li><li>5 Adjustable Full-Width Gallon Bins</li></ul>		
Refrigerator Lighting: LED		
Supplementary Containers: Herb Tender™ Container		
Temperature-Controlled Drawers: 1 Partial-Width		
Dispenser Details		
Dispenser Options:		
<ul style="list-style-type: none"><li>Control/Child Lock</li><li>Favorite Fill</li><li>Filtered Ice</li><li>Filtered Water</li><li>Night Light</li></ul>		

LOT 17.





CONSTRUCTION SUMMARY

2185715 Ontario Inc.

PURCHASERS: MANJIT SIDHU and LAKHVIR SINGH SIDHU

TEL:

LOT NUMBER	PHASE	HOUSE TYPE	CLOSING DATE	
017	2	EDINBURGH-ELEV C-OPT MAIN W OPT 2ND W MEDIA ROOM	18-Mar-26	

Offer	BONUS PACKAGE FOR 50 FT DETACHED - PURCHASER TO RECEIVE \$45,000 (INCLUSIVE OF TAXES) WORTH OF UPGRADES AT THE DECOR CENTER AT TIME OF COLOUR CHART.
Worksheet	Note:

Offer	PURCHASER ACKNOWLEDGES THAT NO UPGRADE ITEMS ARE BEING INCLUDED WITHIN THIS AGREEMENT OF PURCHASE & SALE.
Worksheet	Note:

Offer	NO AGENT 50,000.00 PLUS HST
Worksheet	Note:

Offer	BUILDER TO ACCOMMODATE A DRIVEWAT MEASURING A TOTAL OF 35 FEET FROM ROAD CURB TO FRONT OF GARAGE AS PER BUILDER.
Worksheet	Note:



CONSTRUCTION SUMMARY

2185715 Ontario Inc.

PURCHASERS: MANJIT SIDHU and LAKHVIR SINGH SIDHU

TEL:

LOT NUMBER	PHASE	HOUSE TYPE	CLOSING DATE	
017	2	EDINBURGH-ELEV C-OPT MAIN W OPT 2ND W MEDIA ROOM	18-Mar-26	

Date Added: 22-Jul-25

Invoice Number: 8764

1 - KITCHENS BATHROOMS & LAUNDRY ROOM - SEE QUALITY TOPS & KITCHENS FOR ALL KITCHEN/BATHROOM & LAUNDRY ROOM UPGRADES/LAYOUTS - SEE QTK ATTACHED PAPERWORK Note:
1 - KITCHEN/FOYER - FLOORING - INSTALL UPGRADE FLOOR TILE #4 24 IN X 24 IN LA MARCA ONYX NUVOLATO HONED - REFER TO PLAN Note:
1 - POWDER ROOM/POWDER HALL/UPPER ARA IN HUD ROOM - FLOORING - INSTALL UPGRADE FLOOR TILE #4 24 IN X 24 IN LA MARCA ONYX NUVOLATO HONED - REFER TO PLAN Note:
1 - MUDROOM/DOGWASH WALLS/WALK IN CLOSET AT MUD - FLOORING - INSTALL UPGRADE FLOOR TILE #4 24 IN X 24 IN LA MARCA ONYX NUVOLATO HONED - REFER TO PLAN Note:
1 - MAIN HALL - FLOORING - INSTALL UPGRADE FLOOR TILE #4 24 IN X 24 IN LA MARCA ONYX NUVOLATO HONED - REFER TO PLAN Note:
1 - KITCHEN/SERVERY - COUNTERTOPS - SUPPLY AND INSTALL UPGRADE COUNTER #3 JUPITER QUARTZ - REFER TO QTK DRWGS Note:
1 - KITCHEN/SERVERY - BACKSPLASH - SUPPLY AND INSTALL UPGRADE BACKSPLASH #3 JUPITER QUARTZ AT KITCHEN AND SERVERY TO U/S OF UPPER CABINETS AND AROUND HOOD FAN - REFER TO QTK DRAWINGS Note:
1 - KITCHEN - SINK - INSTALL UPGRADE SINK BLANCO QUATRUS #401519 R15 U2 AND GRIDS #233080- REFER TO SPEC Note: SINK: \$2,231.50 GRID \$257.25
1 - KITCHEN & SERVERY - COUNTERTOP EDGE - INSTALL UPGRADE 1 1/2" THICK L MITRE EDGE - REFER TO QTK DRWGS Note:
1 - SERVERY - SINK - SUPPLY AND INSTALL UPGRADE UNDERMOUNT SINK, BLANCO QUATRUS U BAR #401245 (NO GRID) - REFER TO SPEC Note: SINK \$912.18
1 - POWDER ROOM - SINK - UPGRADE TO SQAURE UNDERMOUNT CATENA WHITE #4210CIY - REFER TO PLANS Note:
1 - KITCHEN - POT FILLER FINISHING- PURCHASER DECLINED POT FILLER FAUCET - BUILDER TO LEAVE CAPPED (ROUGH IN WAS CAPTURED AT STRUCTURAL) - INFO ONLY Note:
1 - DOG WASH - PLUMBING FIXTURE - INSTALL TRINSIC VALVE T14059/R10000-PX, WITH 7 SETTING WALL MOUNT HAND SHOWER WITH CLEANING SPRAY 558884-PR, AND WALL ELBOW 50560-PR - REFER TO SKETCH/SPECS Note:
1 - PRIMARY BATH - GLASS SHOWER - REMOVE DRYWALL WALL BETWEEN TUB AND SHOWER AND REPLACE WITH WHITE QUARTZ CURB AND 10MM CLEAR TEMPERED FRAMELESS GLASS ENCLOSURE - REFER TO PLAN Note:
2 - IN LAW BATH/ENSUITE 2 - PLUMBING - ADD TOE TESTER AT SHOWERS - REFER TO PLAN Note:





CONSTRUCTION SUMMARY

2185715 Ontario Inc.

PURCHASERS: MANJIT SIDHU and LAKHVIR SINGH SIDHU

TEL:

LOT NUMBER	PHASE	HOUSE TYPE	CLOSING DATE	
017	2	EDINBURGH-ELEV C-OPT MAIN W OPT 2ND W MEDIA ROOM	18-Mar-26	

Date Added: 22-Jul-25

Invoice Number: 8764

<p>1 - PRIMARY BATH - SHOWER FLOOR - INSTALL UPGRADE FLOOR TILES SIMPOLO TUNDRA MATTE HES AT SHOWER FLOOR - REFER TO PLAN</p> <p>Note:</p>
<p>1 - IN LAW BATH - SHOWER - REVISION TO LINE ITEM 5 ON PES # 8673-1 - DELETE 18" CLOSET AND EXPAND SHOWER TO BE FULL LENGHT OF BATHROOM. - REFER TO PLAN - NO CHARGE AS PER F.CAROGIOELLO</p> <p>Note:</p>
<p>1 - TWIN BATH 4/5 - **SLIDE BAR COMBO SAME AS PRIMARY**- DELTA ROUND MONITOR 14 SERIES SHOWER KIIT DF TKIT1-PBR/R2200 CHROME - REFER TO SPECS</p> <p>Note:</p>
<p>1 - TWIN BATH 4/5 - SHOWER FLOOR - UGRADE SHOWER FLOOR TILES TO UPGRADE #8 HEXAGON MOSAIC ETERNA SILVER MEDIUM GREY - REFER TO PLAN</p> <p>Note:</p>
<p>1 - BATH 3 - SHOWER HEAD - SUPPLY AND INSTALL UPGRADE SHOWER HEAD DETLA #52910 CHROME WITH ARM #RP46870 CHROME FROM WALL - REFER TO SPEC</p> <p>Note:</p>
<p>1 - DISCLAIMER STONE TOP - Stone slabs vary in size &amp; all seams are visible - fabricator reserves the right to position the seams as necessary.</p> <p>Note:</p>
<p>1 - DISCLAIMER - STAIRCASE VS FLOORING - WOOD SPECIES DIFFERENCE</p> <p>Note: The purchaser was advised and therefore accepts and ac knowledges that the wood species of the staircase and the flooring chosen do not match. This difference may result in a stain colour variance</p> <p>The purchaser agrees that the vendor is to be exempt from any and all claims by the purchaser regarding this colour variance</p>
<p>1 - DISCLAIMER - STAIRCASE VS FLOORING - STAINING DIFFERENCE</p> <p>Note: The purchaser was advised and therefore accepts and ac knowledges that the wood species of the staircae and the flooring chosen do not match. This difference may result in an undesirable colour variance</p> <p>The purchaser agrees that the vendor is to be exempt from any asnd all claims by the purchaser regarding this colour variance (hardwood is shop finished and railing stain is site finished)</p>
<p>1 - PURCHASER AWARE AND ACCEPTS THAT ANY CHANGES MADE TO UPGRADES AFTER SIGNING THIS PURCHASERS EXTRA FORM ARE SUBJECT TO A MINIMUM ADMINISTRATION FEE OF \$1000.00 PLUS A 10% HOLDBACK FEE.</p> <p>Note:</p>
<p>1 - PURCHASER HAS ATTENDED A COLOR APPOINTMENT AT THE DECOR CENTRE AND HAS DECLINED ANY ADDITIONAL UPGRADES. Purchaser accepts and acknowledges that there will be no further changes/additions/deletions to be made upon signing herein..</p> <p>Note:</p>
<p>1 - BONUS PACKAGE - PURCHASER HAS APPLIED THE REMAINING BALANCE OF \$5958.50 THE BONUS UPGRADE PROMOTIONAL PACKAGE TOWARDS THE PURCHASE PURCHASE OF UPGRADES IN THIS AGREEMENT.</p> <p>Note:</p>
<p>1 - KITCHEN - ELECTRICAL WALL OUTLETS - NOTE PURCHASE WANTS TO PLACE OUTLETS AT U/S OF UPPER CABINETS E/S OF STOVE AND IN SERVERY - QTK HAS ACCOMMODATED FOR UNDER CABINET PLUGS - INFO ONLY</p> <p>Note:</p>

Date Added: 24-Jan-25

Invoice Number: 8697

<p>1 - MEDIA ROOM - WINDOWS - INCREASE WINDOW SIZE (ONE OPERABLE AND ONE FIXED) TO 30 X 68 INCHES - REFER TO PLAN</p> <p>Note:</p>
--



CONSTRUCTION SUMMARY

2185715 Ontario Inc.

PURCHASERS: MANJIT SIDHU and LAKHVIR SINGH SIDHU

TEL:

LOT NUMBER	PHASE	HOUSE TYPE	CLOSING DATE	
017	2	EDINBURGH-ELEV C-OPT MAIN W OPT 2ND W MEDIA ROOM	18-Mar-26	

Date Added: 24-Jan-25

Invoice Number: 8697

1 - REOPEN STRUCTURAL FILE FEE

Note:

1 - PURCHASER AWARE AND ACCEPTS THAT ANY CHANGES MADE TO UPGRADES AFTER SIGNING THIS PURCHASERS EXTRA FORM ARE SUBJECT TO A MINIMUM ADMINISTRATION FEE OF \$1000. PLUS A 10% HOLDBACK FEE.

Note:

1 - PURCHASER HAS ATTENDED A STRUCTURAL APPOINTMENT AT THE DECOR CENTRE AND HAS DECLINED ANY ADDITIONAL UPGRADES.

Note:

1 - BONUS PACKAGE - PURCHASER HAS APPLIED \$1,921.00 UPGRADE PROMOTIONAL PACKAGE TOWARDS THE PURCHASE PURCHASE OF UPGRADES IN THIS AGREEMENT.

THE BALANCE OF \$5,958.50 REMAINING TO BE APPLIAED AT TIME OF COLOUR CHART

Note:

Date Added: 15-Jan-25

Invoice Number: 8690

1 - CHANGE\* TO P.E.S NO 8673-2 - ITEM 19 DELETE DOUBLE DOOR TO BEDROOM 3 - SINGLE DOOR AS PER ORIGINAL PLAN - SEE PLAN

Note:

1 - TWIN BATH 4/5 - REMOVE DOOR AND WALL IN FRONT OF TOILET AREA (KEEP WALL ADJACENT TO SHOWER) - NO CHARGE AS PER F.CAROGIOIELLO - SEE PLAN

Note:

1 - UPPER STAIR HALL - REMOVE ARCH BETWEEN STAIRCASE AND HALL IN FRONT OF BEROOM 3 - SUPPLY AND INSTALL ADDITIONAL NOSING AND RAILING IN LIEU OF WALL AT STAIR O.T.B - SEE PLAN

Note:

1 - UPPER MEDIA ROOM - ADD A DOUBLE DOOR CLOSET AND FRAMED DRYWALL NICHE - MOVE WINDOW - REFER TO SKETCH

Note:

1 - PURCHASER AWARE AND ACCEPTS THAT ANY CHANGES MADE TO UPGRADES AFTER SIGNING THIS PURCHASERS EXTRA FORM ARE SUBJECT TO A MINIMUM ADMINISTRATION FEE OF \$500. PLUS A 10% HOLDBACK FEE.

Note:

1 - PURCHASER HAS ATTENDED A STRUCTURAL AND COLOR APPOINTMENT AT THE DECOR CENTRE AND HAS DECLINED ANY ADDITIONAL UPGRADES.

Note:

1 - BONUS PACKAGE - PURCHASER HAS APPLIED \$1469.00 UPGRADE PROMOTIONAL PAKAGE TOWARDS THE PURCHASE OF UPGRADES IN THEIS AGREEMENT

THE BALANCE OF \$7,879.50 TO BE APPLIED AT TIME OF COLOUR CHARTS

Note:

Date Added: 11-Dec-24

Invoice Number: 8673

1 - ALTERATIONS TO PLAN FEE - VARIOUS - REFER TO PLAN - \*Reduction in plan change gee as per S.Carogioiello\*

Note:

1 - UPPER LEVEL - PERMIT CHANGE FEE - CHANGE UPPER LEVEL TO ALTERNATE 5 BEDROOM PLAN - REFER TO ATTCHED (\$2500 DOLLAR CHARGE WAIVED AS PER F.CAROGIOIELLO)

Note:



CONSTRUCTION SUMMARY

2185715 Ontario Inc.

PURCHASERS: MANJIT SIDHU and LAKHVIR SINGH SIDHU

TEL:

LOT NUMBER	PHASE	HOUSE TYPE	CLOSING DATE	
017	2	EDINBURGH-ELEV C-OPT MAIN W OPT 2ND W MEDIA ROOM	18-Mar-26	

Date Added: 11-Dec-24 Invoice Number: 8673

<p>1 - MUD ROOM - ADD DOOR FROM EXTERIOR TO MUDROOM IN LIEU OF WINDOW - INCLUDES STANDARD COACH LIGHT - REFER TO PLAN</p> <p>Note:</p>
<p>1 - MUD ROOM - REDESIGN - *NOTE LAUNDRY RELOCATE UPSTAIRS* REFER TO PLAN. REDUCTION IN PRICE AS PER F.CAROGIOIELLO</p> <p>Note: - EXPLAND CLOSET INTO WALK IN</p> <p>- ADD A DOG WASH/CURB</p>
<p>1 - IN LAW BATH - EXPAND SHOWER TOWARD CLOSET SO THAT SHOWER IS APPROX 34 IN X 42 IN - DECREASE DEPTH OF CLOSET TO APPROX 18" DEEP (CHROME FRAMED DOOR AND SIDE PANEL) AND ADD WIRE SHELVEING. REFER TO PLAN</p> <p>Note:</p>
<p>1 - DINING ROOM - REDUCE BY 12 INCHES - MOVE WINDOW - ADD CHINA HUTCH **CABINET PRICE OF \$6930.00 QUOTED BY QTK FOR STANDARD UPPER AND LOWER CABINETS TO BE CHARGED AT TIME OF COLOUR CHARTS** - REFER TO PLAN</p> <p>Note:</p>
<p>1 - KITCHEN - REDUCE SLIGHTLY BY ADDING SERVERY AREA - ADD DOUBLE ARCHWAY - EXTEND TILED AREA INTO SERVERY - REFER TO PLAN</p> <p>Note:</p>
<p>1 - KITCHEN/SERVERY - CUPBOARDS &amp; MOVE CHANGES - ***TO BE CHARGED AT TIME OF COLOUR CHARTS STANDARD CABINETS QUOTED \$11,120.00***AT STANDARD HEIGHT - REFER TO REVISED LAYOUT</p> <p>Note: - MOVE ISLAND</p> <p>- MOVE COOKTOP</p> <p>- MOVE BAR SINK TO SERVERY</p> <p>- MOVE MAIN SINK AND DISHWASHER TO ISLAND</p> <p>- DELETE SINK WINDOW</p> <p>- MOVE SMALLER WINDOW AT DINETTE</p> <p>- ADD WALL OVEN TOWER (ALL CUBOARDS AT COLOUR CHARTS)</p> <p>- ADD SERVERY BETWEEN KITCHEN AND DINING</p> <p>-ADD PULL OUT WASTE RECYCLE ADJACENT TO MAIN SINK (AT COLOUR CHARTS)</p>
<p>1 - KITCHEN - ADDITIONAL STONE COUNTERTOPS IN STANDARD QUARTZ WITH STANDARD EDGE (PRICE \$8,504.00 QUOTED TO BE CHARGED AT TIME OF COLOUR CHARTS) INCLUDES SERVERY AND DINING AREAS AS WELL) - REFER TO PLAN - INFO ONLY</p> <p>Note:</p>
<p>0 - KITCHEN - WINDOWS AT DINETTE - MOVE ONE WINDOW - REFER TO PLAN</p> <p>Note:</p>
<p>1 - KITCHEN - ROUGH IN FOR ALL ADDITIONAL ELECTRICAL - REFER TO PLAN</p> <p>Note:</p> <p>- GAS RANGE \$850</p> <p>- WALL OVEN WITH MICRO ABOVE \$2000</p> <p>- INTEGRATED HOOD FAN AT KITCHEN \$800</p>
<p>1 - KITCHEN - APPLIANCES - INFO ONLY - PURCHASER HAS NOT PROVIDED ROYAL PINE WITH APPLIANCE SPECIFICATIONS AT THE TIME OF STRUCTURALS - PURCHASER AGREES TO PROVIDE SPECIFICATIONS T THE TIME OF COLOUR CHART APPOINTMENT</p> <p>Note: *Purchaser acknowledges that electrical pricing may be subject to change upon confirmation of appliance specifications*</p>
<p>1 - KITCHEN - ROUGH IN FOR POT FILLER ABOVE STOVE - **FIXTURE TO BE SELECTED AND CHARGED AT TIME OF COLOUR CHARTS, ROUGH IN ONLY**</p> <p>Note:</p>
<p>1 - GREAT ROOM - RAISE ROUGH IN FOR EXISTING TV TO 60" AFF WITH CONDUIT COMING OUT ADJACENT TO OUTLET UNDER WINDOW RIGHT OF FIREPLACE - REFER TO PLAN</p> <p>Note:</p>
<p>1 - UPPER LEVEL - *NOTE 8FT DOOR HEIGHTS ON SECOND FLOOR AS PER SALES* - INFO ONLY</p> <p>Note:</p>





CONSTRUCTION SUMMARY

2185715 Ontario Inc.

PURCHASERS: MANJIT SIDHU and LAKHVIR SINGH SIDHU

TEL:

LOT NUMBER	PHASE	HOUSE TYPE	CLOSING DATE	
017	2	EDINBURGH-ELEV C-OPT MAIN W OPT 2ND W MEDIA ROOM	18-Mar-26	

Date Added: 11-Dec-24

Invoice Number: 8673

1 - SITTING AREA - CHANGE SHAPE OF WIC (REDUCE SITTING ROOM TO APPROX 10'-0"). ADD WIRE SHELVING. REFER TO PLAN  
Note:

1 - BEDROOM 5 - TURN INTO MEDIA ROOM - DELETE DOOR AND WALL INTO BEDROOM 5 LEAVE OPEN TO STAIR HALL - ADD FRAMED ARCHWAY - REFER TO PLAN/SKETCH  
Note:

1 - BEDROOM 5/MEDIA ROOM - PLACE TV HERE IN LEIU OF PRIMARY BEDROOM - RAISE TO 60" WITH CHASE TO OULET BELOW WINDOW ON LEFT OF FIREPLACE - REFER TO PLAN  
Note:

1 - BEDROOM 3 - ADD DOUBLE DOOR ENTRY/TRIM - CENTER DOORS - REFER TO PLANS  
Note:

1 - BEDROOM 5 CLOSET - TURN INTO UPPER LAUNDRY ROOM - NOTE \*\* ADDITIONAL CABINETRY/COUNTER/UPPERS TO BE PRICED AT TIME OF COLOUR CHARTS, CABINETRY NOT INCLUDED AT THIS TIME\*\* - INCREASE SIZE OF ROOM 9'-0" L X MIN 6'-0" WIDE - REFER TO PLAN  
Note: - RELOCATE DOOR  
- INCREASE SIZE OF DOOR TO ACCOMMODATE W/D  
- TILE FLOORING  
- FLOOR DRAIN  
- FRAMING/DRYWALL  
- PAINT  
- VENTING  
- PLUMBING  
- RELOCATE W/D  
- RELOCATE SINK AND LAUNDRY CABINET

1 - BEDROOM 2 WIC - INCREASE IN SIZE - TAKE FROM PRIMARY WIC - MOVE DOOR - REFER TO PLAN  
Note:

1 - PURCHASER AWARE AND ACCEPTS THAT ANY CHANGES MADE TO UPGRADES AFTER SIGNING THIS PURCHASERS EXTRA FORM ARE SUBJECT TO A MINIMUM ADMINISTRATION FEE OF \$500. PLUS A 10% HOLDBACK FEE.  
Note:

1 - PURCHASER HAS ATTENDED A STRUCTURAL APPOINTMENT AT THE DECOR CENTRE AND HAS DECLINED ANY ADDITIONAL UPGRADES.  
Note:

0 - BONUS PACKAGE - PURCHASER HAS APPLIED \$35651.50 UPGRADE PROMOTIONAL PACKAGE TOWARDS THE PURCHASE PURCHASE OF UPGRADES IN THIS AGREEMENT.  
BALANCE OF \$9348.50 TO BE APPLIED AT TIME OF COLOUR SELECTIONS  
Note:

This Document is Extremely Time Sensitive - Printed 23 Jul 25 at 8:45



\* INTERIOR COLOUR SCHEME \*

Purchasers	Decor Consultant	Model and Elevation	Telephone Res. / Bus	Project	Closing Date	Property
MANJIT SIDHU & LAKHVIR SINGH SIDHU	Lisa Renzetti	URGH-ELEV C-OPT MAIN W OPT 2ND W MEDIA	/	2185715 Ontario Inc.	18/03/2026	017

Page 1 of 3

	Flooring	Wall Tile	Plumbing
	Description	Main Accent/Insert Border / Listello Pattern	
Primary Ensuite	12 x 24 Altezza Carra Matte (STND)	12 x 24 Altezza Carra Matte (STND) none	White
Ensuite 2	12 x 24 Bellevue White (STND)	12 x 24 Bellevue White (STND) none	White
Ensuite 3	12 x 24 Byzantine Azzuro (STND)	12 x 24 Byzantine Azzuro (STND) none	White
Twin Bath 4/5	12 x 24 Altezza Carra Matte (STND)	12 x 24 Altezza Carra Matte (STND) none	See notes
Laundry Room	12 x 24 Byzantine Azzuro	none NA	White
Kitchen/Servery	24 X 24 La Marca Onyx Nuvolato Honed (UP)	Jupiter, Everest Quartz (UPG) NA	See notes
Powder	24 X 24 La Marca Onyx Nuvolato Honed (UP)	none NA	See notes
In Law Bath	12 x 24 Byzantine Pentallic Grey (STND)	12 x 24 Byzantine Pentallic Grey (STND) none	See notes
Mud Room/DogWash	24 X 24 La Marca Onyx Nuvolato Honed (UP)	Onyx Nuvolato Honed (UP) dogwash walls Note: Dog wash walls 2 tiles hi (48")	See notes
Foyer	24 X 24 La Marca Onyx Nuvolato Honed (UP)		
Main Hall	24 X 24 La Marca Onyx Nuvolato Honed (UP)		
Great Room	Vintage PSS, Red Oak Select V Pearl, 3 1/4" Baja		
Living Room	Vintage PSS, Red Oak Select V Pearl, 3 1/4" Baja		
Dining Room	Vintage PSS, Red Oak Select V Pearl, 3 1/4" Baja		
In Law Suite	Vintage PSS, Red Oak Select V Pearl, 3 1/4" Baja		
2nd Floor Hall	Vintage PSS, Red Oak Select V Pearl, 3 1/4" Baja		
Media Room	Vintage PSS, Red Oak Select V Pearl, 3 1/4" Baja		
Primary Bedroom	Vintage PSS, Red Oak Select V Pearl, 3 1/4" Baja		
Sitting Area	Vintage PSS, Red Oak Select V Pearl, 3 1/4" Baja		
Bedroom 2	Vintage PSS, Red Oak Select V Pearl, 3 1/4" Baja		
Bedroom 3	Vintage PSS, Red Oak Select V Pearl, 3 1/4" Baja		
Bedroom 4	Vintage PSS, Red Oak Select V Pearl, 3 1/4" Baja		
Basement Landing	Amberglan Oak EE-H-286 Laminate (STND)		

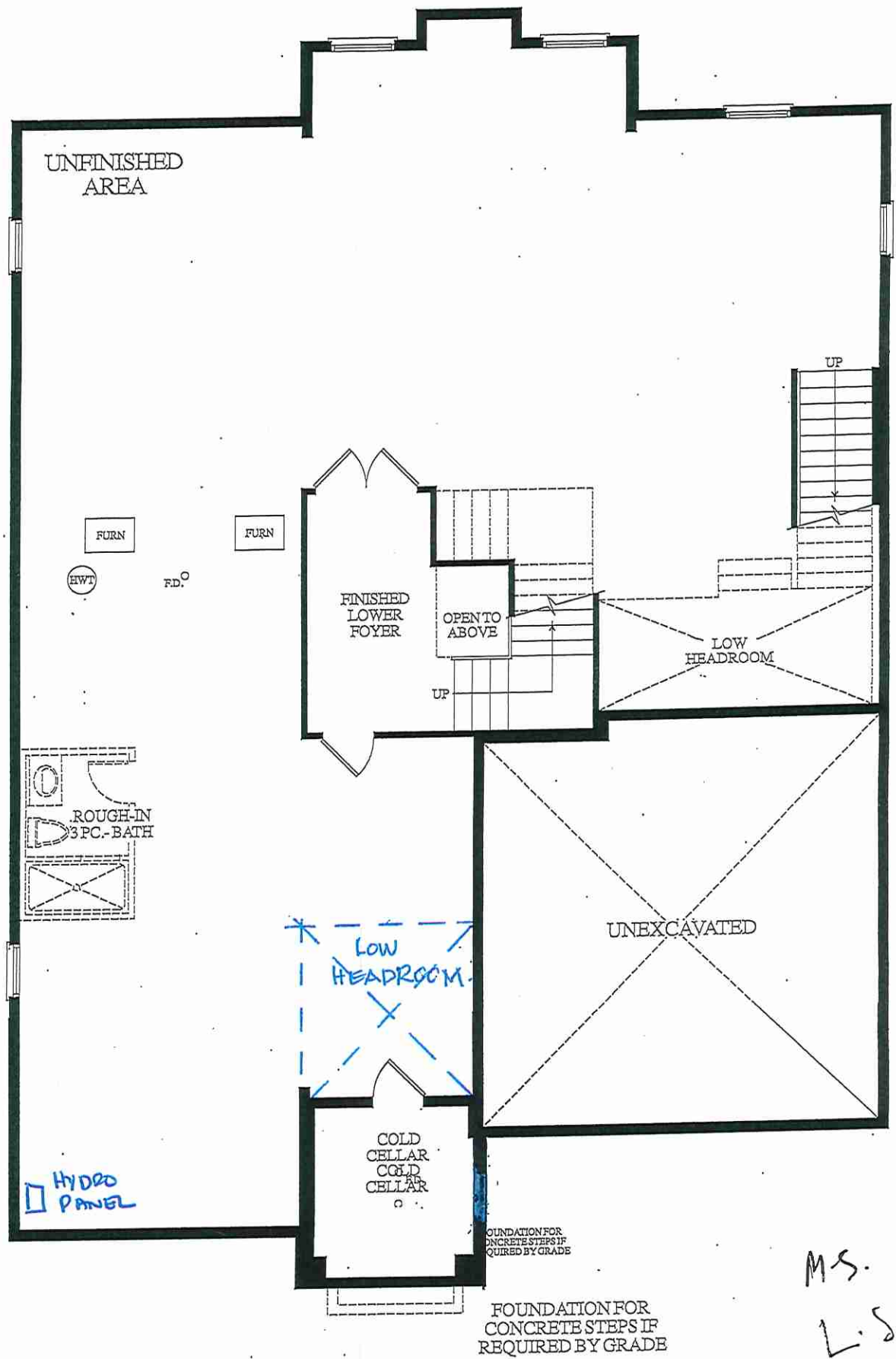
Railings and Stairs		Cornice Moulding / Medallion	
Railings	STANDARD	Foyer	None
Pickets	STANDARD	Living Room	None
Posts	STANDARD	Dining Room	None
Stringers	STANDARD - Red Oak	Family Room	None
Treads	STANDARD - Red Oak	Main Hall	None
Risers	STANDARD - Red Oak	Kitchen	None
Runner	none	2nd Floor Hall	None
Trim			
Baseboard & Casing	STND - 5 1/2" Step Bev base 3 1/2" casing		
Front Door Glass	STANDARD		
Interior Doors	STANDARD		
Knobs	STANDARD		
Hinges	STANDARD		
Grip Set	STANDARD		

Notes  
KITCHEN SINK: Blanco Quatrus U2 #401519 with grids #233080. POWDER SINK: Catena White #4210CIY. DOG WASH: Trinsic valve #T14059/R10000-PX with 7 setting wall mount hand shower and cleaning spray #55888-4-PR with wall elbow #50560-PR chrome. IN-LAW: Add toe tester (that typically goes with tub). TWIN BATH 4/5: add slide bar combo Delta round monitor 14 series DF TKIT1-PBR/R2200 chrome. BATH 3: ADD Shower head delta #RP6025PR and arm delta #RP46870. Servery Sink: blanco quatrus u bar #401245.

Page 1 of 3

Consultant: Purchaser: Purchaser: Vendor:

Lisa Renzetti MANJIT SIDHU LAKHVIR SINGH SIDHU 2185715 Ontario Inc.



LOWER LEVEL  
ELEV. C

M.S.

L.S.

*[Handwritten signature]*

*[Handwritten signature]*



LOT 17 \* 50-08 EDINBURGH \* 5 BEDROOM \* EL.C \* 3445 SQ.FT.



Revised July 22, 2025



Quality Tops & Kitchens Ltd.  
80 Sante Drive, Vaughan, ON L4K 3C4  
T 416.746.1811 F 905.761.5901  
www.QTK.ca info@qtk.ca

your kitchen. your taste.

**PURCHASE AGREEMENT FORM**

PURCHASER:	MANJIT SIDHU	CONTRACTOR:	2185715 ONTARIO INC.
ADDRESS:		SITE:	WEST RIVER PH 2
EMAIL:	MANJITSIDHU78@YAHOO.COM	MODEL TYPE:	50-08
PHONE #:	4166066582	LOT #:	17 WRV2
PHONE #:		DATE:	Jul 22, 2025 Q14851

The purchaser agrees to buy and Quality Tops & Kitchens Ltd. (QTK) agrees to sell and provide for the purchaser the following articles listed herein and with attached drawing in accordance to the terms and conditions described on the reverse of this agreement form.

ROOM		DESCRIPTION	CATEGORY
KITCHEN	DOOR STYLE:	QT 1922 NONE	Category 4
	FINISH:	FLAVIE	
	SPECIES:	LP LAMINATE	
	DOOR HARDWARE:		
	DRW HARDWARE:		
		COUNTER TOP: Counter Top by Others	
ITEM #	QTY	DESCRIPTION	PRICE
BGB4	1	3 BIN PULL-OUT RECYCLE UNIT - 24" WIDE CABINET. 2 x 35 L BINS FOR GARBAGE & RECYLCING + 1 x 21 L COMPOST BIN.	
BMO2696	1	BUILT-IN MICRO & WALL OVEN w/ WOOD DRAWER(S) BELOW - 26" D x 95-1/2"H	
TRY-WO	1	TRAY DIVIDER - ABOVE WALL OVEN	
CUST-1	1	A' LINE CABINETRY 5/8" WHITE CABINET CONSTRUCTIONS & ADJ. SHELVES 113 WHITE LP LAMINATE INTERIORPREMIUM MOTION HINGES & SLIDES	
CUST-2	1	36" W PROF SERIES COOK-TOP w/ FRONT BUTTONS & POT DRWS (TWO BIG DRAWERS)	
CUST-3	1	26" DEEP FRIDGE ENCLOSURE W/ REQ GABLES- OPTION PAID FOR BY BUILDER	
CUST-4	2	ADD TOP DRAWERS TO BASE CABINETS ON STOVE WALL	
CUST-5	1	DESIGN FEE: RELOCATE SINK & DISHWASHER TO ISLAND	
CUST-6	1	DESIGN FEE: ADD 5' OF BASE & UPPER CABINETRY TO SERVERY (QTM 1922 FLAVIE- LP LAMINATE)	
CUST-7	3	ADD VALANCE BOX TO CABINET IN SERVERY & TO THE UPPER BESIDE STOVE	
CUST-8	1	SQUARE CANOPY W/ 1/2" P395 REVEAL & 8" BOTTOM	
CUST-9	1	BUMP OUT COOKTOP CABINET - 26" DEEP W/ 3/4" GABLES ON EACH SIDE	
CUST-10	1	EXTEND CABINET HEIGHT TO 52" H X 13-3/4"D W/ 12" H FLAT VALANCE & 3/4" GROOVE REVEAL TO CEILING; MOUNTING HEIGHT- 108"; O.A. CEILING HT 120"	
CUST-11	1	INCREASE ISLAND WIDTH TO 120"W IN LIEU OF 95"W & DEPTH TO 45"D IN LIEU OF 42" W/ 3" THK GABLES X 43" D ON BOTH SIDES- QUIRK MITERED	
CUST-12	2	21" D X 108" H PANTRY CABINETS W/ EXTERNAL 2PD DRAWERS	
CUST-13	1	TWO TONE KITCHEN: UPGRADE TO CAT 4 DOOR STYLE & FINISH: KITCHEN TALL, UPPERS & SERVERY UPPERS: QTM 1922 BONAVENTURE (LP LAM) KIT BASE, ISLAND, CANOPY & SERVERY BASE: QTM 1922 FLAVIE (LP LAM)	
CUST-14	1	13-3/4" D CABINET DOWN TO COUNTER W/ 12" H OPEN SHELF ON TOP & SWING DOOR BELOW & TO ACCOMODATE COUNTER APPLIANCE (FRIDGE WALL)ADD 3/4" BOTTOM VALANCE	
CUST-15	1	HARDWARE: UPG TO CAT 3 9635- BCHG (VARIOUS SIZES)	
CUST-16	1	ROTATE LV 133 (4" DEEP) FLUSH WITH DOOR- OPTION PAID FOR BY THE BUILDER	
CUST-17	1	1 SET OF 4BD (4 EQ DRWS)- OPTION PAID FOR BY THE BUILDER- LOCATED IN ISLAND	
ROOM SUMMARY:			
ROOM		DESCRIPTION	CATEGORY
ENSUITE VANITY	DOOR STYLE:	QT 1022 NONE	Category 3
	FINISH:	IONIQ	
	SPECIES:	LP LAMINATE	
	DOOR HARDWARE:		
	DRW HARDWARE:		
		COUNTER TOP: Counter Top by Others	
ITEM #	QTY	DESCRIPTION	PRICE
BCAB-P	1	BASE CABINETS AS PER DRAWINGS PROVIDED	
CUST-1	1	CONVERT 1 DRAWER DOOR BASE TO 3VBD VANITY BANK OF DRAWERS	



Quality Tops & Kitchens Ltd.  
80 Sante Drive, Vaughan, ON L4K 3C4  
T 416.746.1811 F 905.761.5901  
www.QTK.ca info@qtk.ca

PURCHASE AGREEMENT FORM

PURCHASER:	MANJIT SIDHU	CONTRACTOR:	2185715 ONTARIO INC.
ADDRESS:		SITE:	WEST RIVER PH 2
EMAIL:	MANJITSIDHU78@YAHOO.COM	MODEL TYPE:	50-08
PHONE #:	4166066582	LOT #:	17 WRV2
PHONE #:		DATE:	Jul 22, 2025 Q14851

ITEM #	QTY	DESCRIPTION	PRICE
CUST-2	1	HARDWARE: DH00015	
CUST-3	1	CAT 3 DOOR STYLE & FINISH: QTS 1022 IONIQ (LP LAM)	
ROOM SUMMARY:			

ROOM	DESCRIPTION	CATEGORY
SHARED BATH	DOOR STYLE: QT 1022 NONE FINISH: OTTER GREY SPECIES: LP LAMINATE DOOR HARDWARE: DRW HARDWARE: COUNTER TOP: Counter Top by Others	Category 2

ITEM #	QTY	DESCRIPTION	PRICE
BCAB-P	1	BASE CABINETS AS PER DRAWINGS PROVIDED - (OPTION PAID FOR BY BUILDER)	
CUST-1	1	UPG TO CAT 2 DOOR STYLE & FINISH: QTS 1022 OTTER GREY (LP LAMINATE)	
CUST-6	1	HARDWARE: DH00015	
ROOM SUMMARY:			

ROOM	DESCRIPTION	CATEGORY
BATH # 2 VANITY	DOOR STYLE: QT 1022 NONE FINISH: SHEER LINEN SPECIES: LP LAMINATE DOOR HARDWARE: DRW HARDWARE: COUNTER TOP: Counter Top by Others	Category 2

ITEM #	QTY	DESCRIPTION	PRICE
BCAB-P	1	BASE CABINETS AS PER DRAWINGS PROVIDED - (OPTION PAID FOR BY BUILDER)	
CUST-2	1	HARDWARE: DH00015	
CUST-3	1	CAT 2 DOOR STYLE & FINISH: QTS 1022 SHEER LINEN (LP LAM)	
ROOM SUMMARY:			

ROOM	DESCRIPTION	CATEGORY
BATH # 3 VANITY	DOOR STYLE: QT 1022 NONE FINISH: OTTER GREY SPECIES: LP LAMINATE DOOR HARDWARE: DRW HARDWARE: COUNTER TOP: Counter Top by Others	Category 2

ITEM #	QTY	DESCRIPTION	PRICE
BCAB-P	1	BASE CABINETS AS PER DRAWINGS PROVIDED - (OPTION PAID FOR BY BUILDER)	
CUST-2	1	HARDWARE: DH00015	
CUST-3	1	UPG TO CAT 2 DOOR STYLE & FINISH: QTS 1022 OTTER GREY (LP LAM)	
ROOM SUMMARY:			



Quality Tops & Kitchens Ltd.  
80 Sante Drive, Vaughan, ON L4K 3C4  
T 416.746.1811 F 905.761.5901  
www.QTK.ca info@qtk.ca

**PURCHASE AGREEMENT FORM**

PURCHASER:	MANJIT SIDHU	CONTRACTOR:	2185715 ONTARIO INC.
ADDRESS:		SITE:	WEST RIVER PH 2
EMAIL:	MANJITSIDHU78@YAHOO.COM	MODEL TYPE:	50-08
PHONE #:	4166066582	LOT #:	17 WRV2
PHONE #:		DATE:	Jul 22, 2025 Q14851

ROOM	DESCRIPTION	CATEGORY
IN LAW BATH	DOOR STYLE: QT 1022 NONE FINISH: FREQUENCY SPECIES: LP LAMINATE DOOR HARDWARE: DRW HARDWARE: COUNTER TOP: Counter Top by Others	Category 2

ITEM #	QTY	DESCRIPTION	PRICE
BCAB-P	1	BASE CABINETS AS PER DRAWINGS PROVIDED - (OPTION PAID FOR BY BUILDER)	
CUST-2	1	HARDWARE: DH00015	
CUST-3	1	CAT 2 DOOR STYLE & FINISH: QTS 1022 FREQUENCY (LP LAM)	
ROOM SUMMARY:			

ROOM	DESCRIPTION	CATEGORY
POWDER ROOM VANITY	DOOR STYLE: QT 1022 NONE FINISH: FLAVIE SPECIES: LP LAMINATE DOOR HARDWARE: DRW HARDWARE: COUNTER TOP: Counter Top by Others	Category 3

ITEM #	QTY	DESCRIPTION	PRICE
BCAB-P	1	BASE CABINETS AS PER DRAWINGS PROVIDED - (OPTION PAID FOR BY BUILDER)	
CUST-2	1	HARDWARE: DH00015	
CUST-3	1	CAT 3 DOOR STYLE & FINISH: QTS 1022 FLAVIE (LP LAM)	
ROOM SUMMARY:			

ROOM	DESCRIPTION	CATEGORY
LAUNDRY ROOM	DOOR STYLE: QT 1022 NONE FINISH: CANVAS SPECIES: LP LAMINATE DOOR HARDWARE: DRW HARDWARE: COUNTER TOP: Laminate Top by QTK P344-CA	Category 1

ITEM #	QTY	DESCRIPTION	PRICE
CAB-P	1	BASE & UPPER CABINETS AS PER DRAWINGS PROVIDED - (OPTION PAID FOR BY BUILDER)	
CUST-4	1	HARDWARE: DH00015	
ROOM SUMMARY:			





Quality Tops & Kitchens Ltd.  
80 Sante Drive, Vaughan, ON L4K 3C4  
T 416.746.1811 F 905.761.5901  
www.QTK.ca info@qtk.ca

PURCHASE AGREEMENT FORM

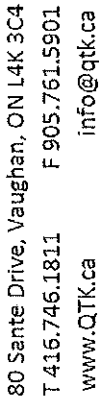
PURCHASER:	MANJIT SIDHU	CONTRACTOR:	2185715 ONTARIO INC.
ADDRESS:		SITE:	WEST RIVER PH 2
EMAIL:	MANJITSIDHU78@YAHOO.COM	MODEL TYPE:	50-08
PHONE #:	4166066582	LOT # :	17 WRV2
PHONE #:		DATE:	Jul 22, 2025 Q14851

EXPECTED DELIVERY DATE	TBD	SUB-TOTAL:	
Customers please note all garbage bins, spice baskets, magic corner baskets and other accessories will only be delivered AFTER you move in the house. Please call us to request delivery of these items after you move in. Thank you. ALL CHANGES FINAL UPON SIGNING		TOTAL:	
PLEASE READ ALL THE TERMS AND CONDITIONS ON THE ACCOMPANYING QTK TERMS & CONDITIONS DOCUMENT. BY SIGNING BELOW YOU AGREE TO RECEIVE THE ITEMS LISTED HEREIN AND PAY (ACCORDING TO QTK'S PAYMENT POLICY), AND HAVE READ AND UNDERSTOOD THE TERMS & CONDITIONS AS OUTLINED IN THE QTK TERMS & CONDITIONS DOCUMENT.		HST	
		GRAND TOTAL:	
DEPOSIT 1 DATE: _____		DEPOSIT 1:	
DEPOSIT 2 DATE: _____		DEPOSIT 2:	
BALANCE TO BE PAID IN FULL BY DUE DATE: _____ CUSTOMER INITIAL(S): _____			

CUSTOMER SIGNATURE: \_\_\_\_\_ DATE: \_\_\_\_\_

CUSTOMER SIGNATURE: \_\_\_\_\_ DATE: \_\_\_\_\_

SALES REP NAME: \_\_\_\_\_ - apD QTK AUTHORIZED SIGNATURE: \_\_\_\_\_

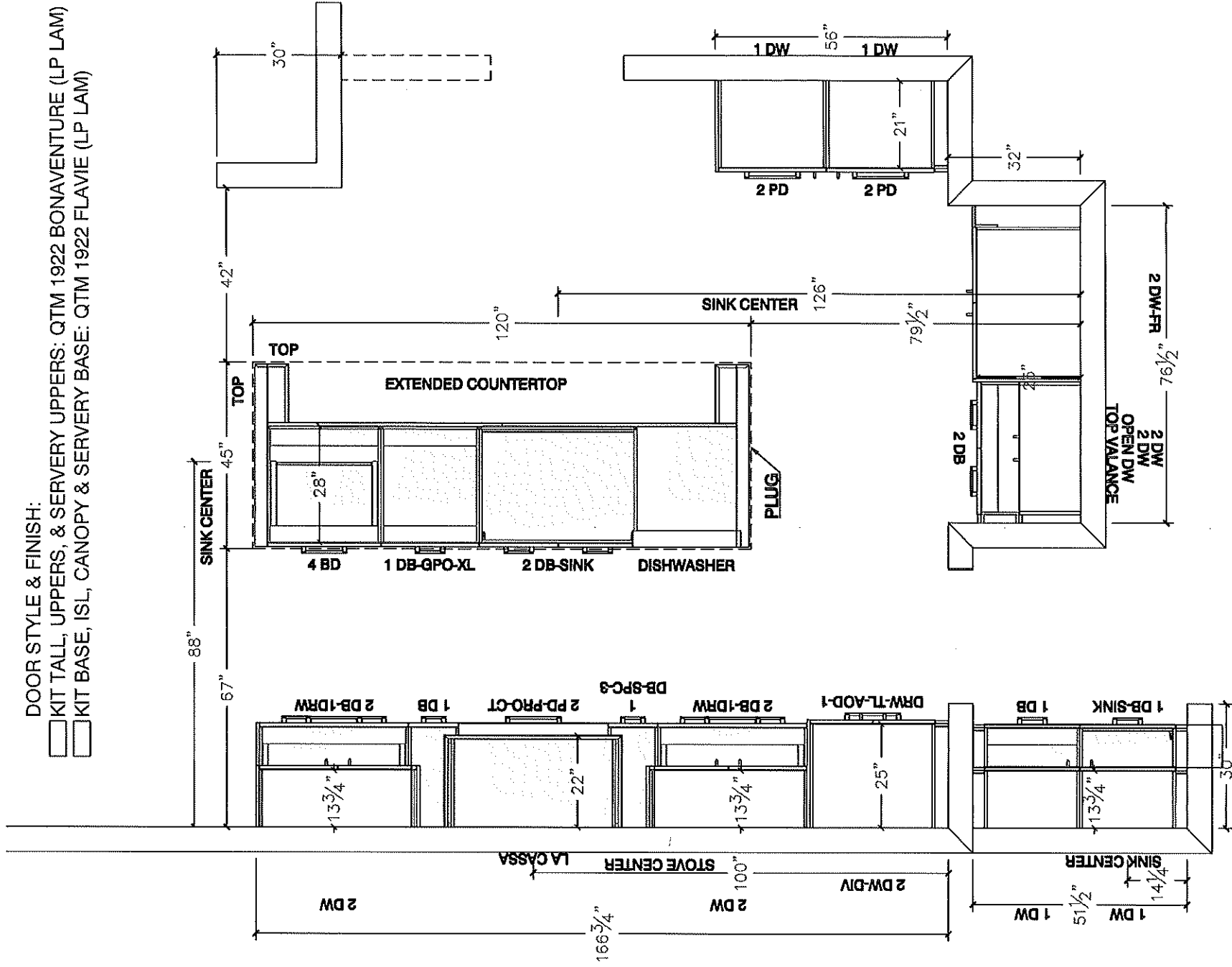


CLIENT: ROYAL PINE HOMES	JOB NAME: LOT 17 WRV2 (5008)	ROOM: KITCHEN	DRAWN BY: NS
SITE: WEST RIVER VALLEY PH2 SOUTH	DOOR STYLE: —	DOOR HANDLE: —	SCALE: 3/8" = 1'-0"
PHONE: —	FINISH: —	DRW HANDLE: —	DATE: JULY 22 2025
EMAIL: —	SPECIES: —	TOP: —	PAGE:

Customer Agrees and Accepts the following conditions: 1. The Drawing is a representation only and the installed cabinetry may vary NSlightly in product size, measurements, handle appearance and location and other details. Although Quality Tops & Kitchens Ltd. (QTK) does it's best to manufacture exactly what is shown here outside factors may prevent that and some variance is to be expected and accepted by the customer. 2. These drawings represent the intellectual property of QTK and as such the customer understands and accepts that all deposits given by the customer to QTK are non-refundable after QTK has supplied drawings (either physically or electronically) to the customer. If the customer decides to cancel the order after QTK has submitted drawings to the customer, the deposit will then be considered a design fee and no money will be returned to the customer.

**DOOR STYLE & FINISH:**

- ☐ KIT TALL, UPPERS, & SERVERY UPPERS: QTM 1922 BONAVENTURE (LP LAM)  
☐ KIT BASE, ISL, CANOPY & SERVERY BASE: QTM 1922 FLAVIE (LP LAM)









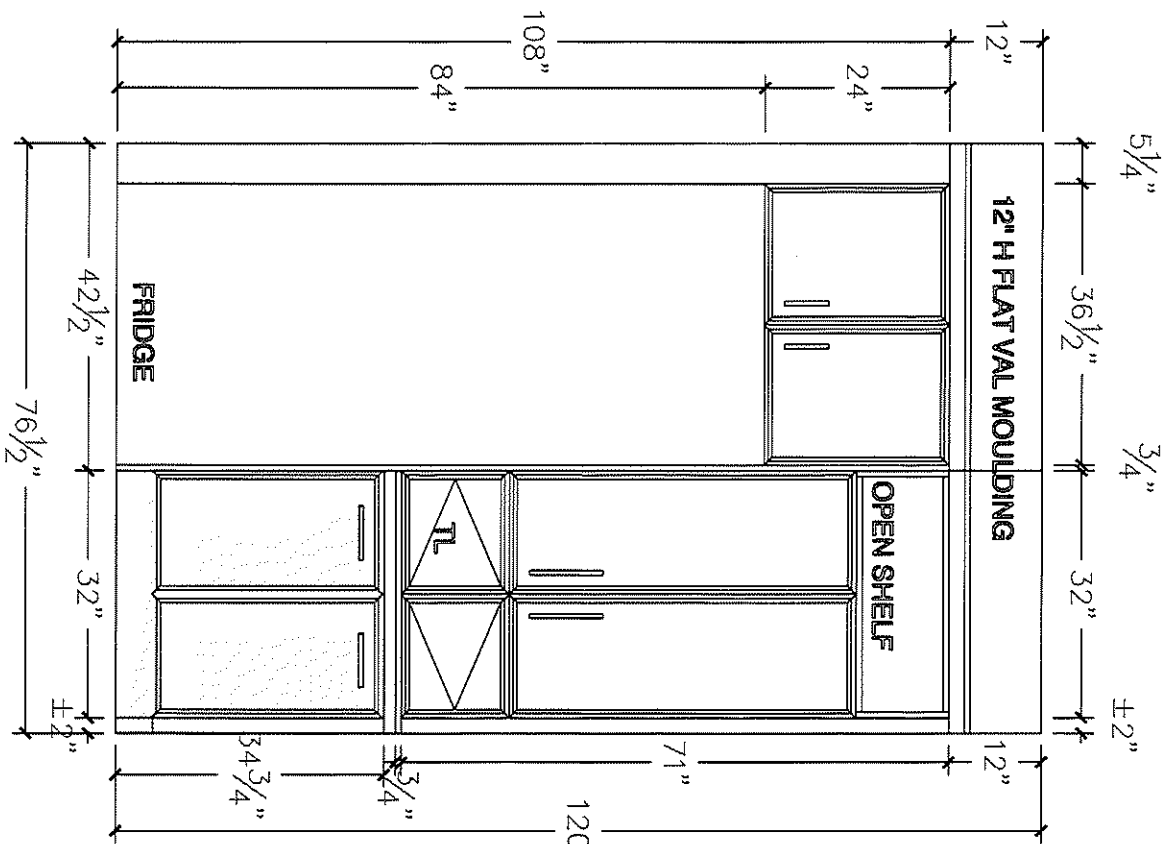
80 Sante Drive, Vaughan, ON L4K 3C4  
T 416.746.1811 F 905.761.5901  
www.QTK.ca info@qtk.ca

CLIENT: ROYAL PINE HOMES	JOB NAME: LOT 17 WRV2 (5008)	ROOM: KITCHEN	DRAWN BY: NS
SITE: WEST RIVER VALLEY PH2 SOUTH	DOOR STYLE: —	DOOR HANDLE: —	SCALE: 1/2" = 1'-0"
PHONE: —	FINISH: —	DRW HANDLE: —	DATE: JULY 22 2025
EMAIL: —	SPECIES: —	TOP: —	PAGE:

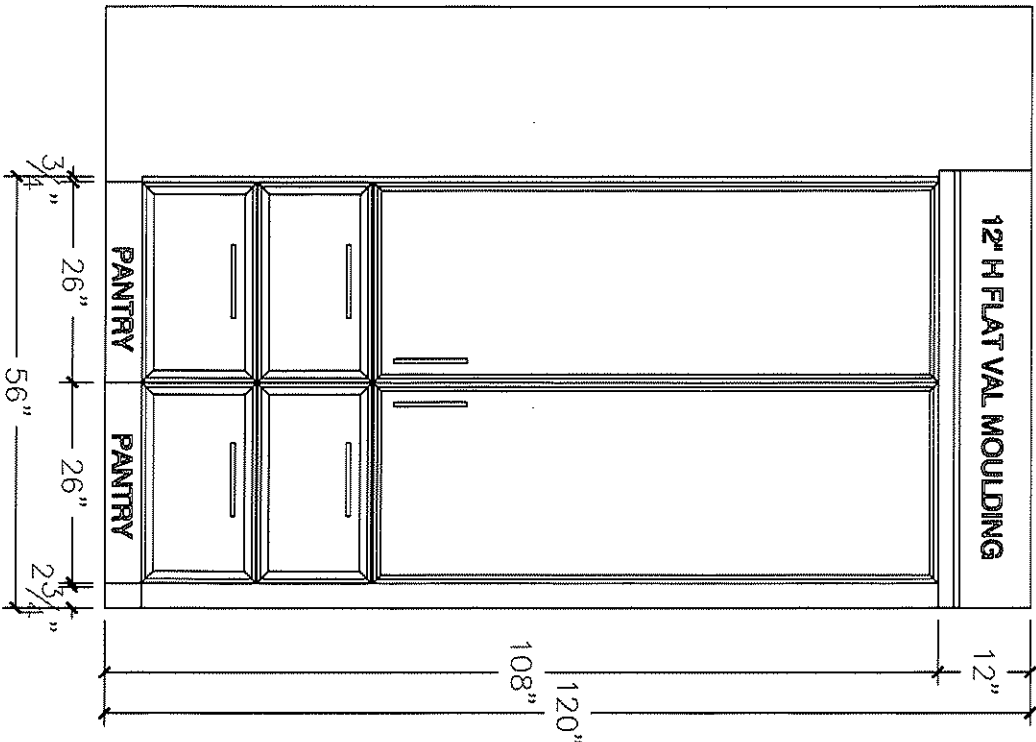
COMMENTS:

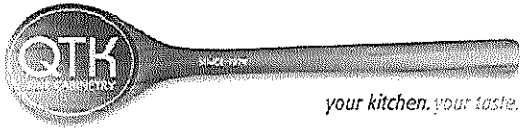
Customer Agrees and Accepts the following conditions: 1. The Drawing is a representation only and the installed cabinetry may vary NSightly in product size, measurements, handle appearance and location and other details. Although Quality Tops & Kitchens Ltd. (QTK) does it's best to manufacture exactly what is shown here outside factors may prevent that and some variance is to be expected and accepted by the customer. 2. These drawings represent the intellectual property of QTK and as such the customer understands and accepts that all deposits given by the customer to QTK are non-refundable after QTK has supplied drawings (either physically or electronically) to the customer. If the customer decides to cancel the order after QTK has submitted drawings to the customer, the deposit will then be considered a design fee and no money will be returned to the customer.

PANTRY WALL ELEVATION



FRIDGE WALL ELEVATION





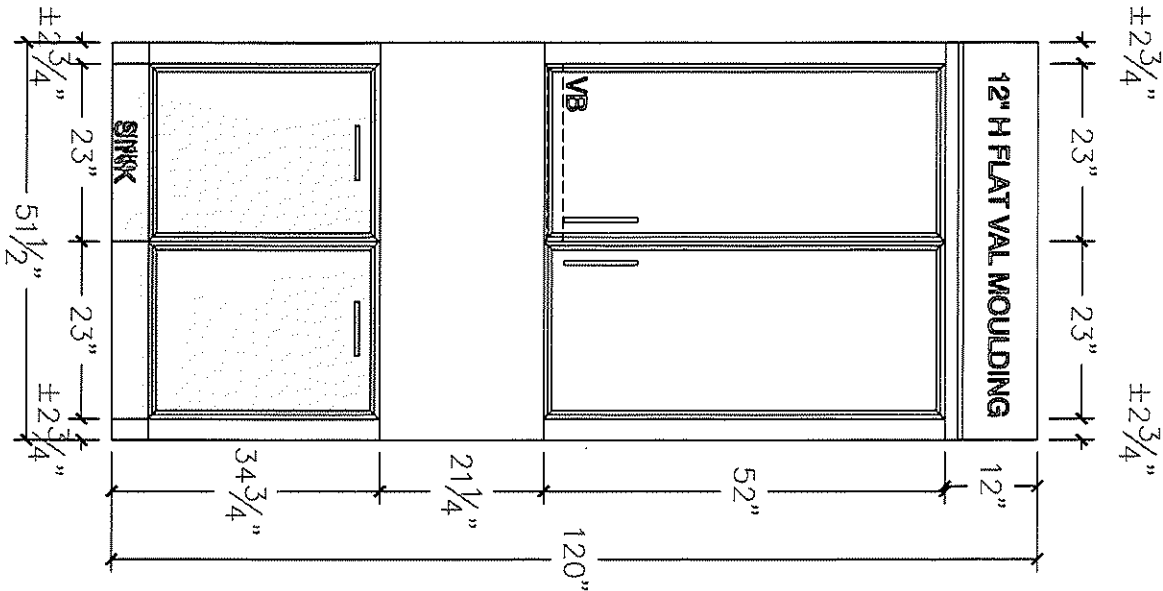
80 Sante Drive, Vaughan, ON L4K 3C4  
T 416.746.1811 F 905.761.5901  
www.QTK.ca info@qtk.ca

CLIENT: ROYAL PINE HOMES	JOB NAME: LOT 17 WRV2 (5008)	ROOM: KITCHEN	DRAWN BY: NS
SITE: WEST RIVER VALLEY PH2 SOUTH	DOOR STYLE: _	DOOR HANDLE: _	SCALE: 1/2" = 1'-0"
PHONE: _	FINISH: _	DRW HANDLE: _	DATE: JULY 22 2025
EMAIL: _	SPECIES: _	TOP: _	PAGE:

COMMENTS:

Customer Agrees and Accepts the following conditions: 1. The Drawing is a representation only and the installed cabinetry may vary NSightly in product size, measurements, handle appearance and location and other details. Although Quality Tops & Kitchens Ltd. (QTK) does it's best to manufacture exactly what is shown here outside factors may prevent that and some variance is to be expected and accepted by the customer. 2. These drawings represent the intellectual property of QTK and as such the customer understands and accepts that all deposits given by the customer to QTK are non-refundable after QTK has supplied drawings (either physically or electronically) to the customer. If the customer decides to cancel the order after QTK has submitted drawings to the customer, the deposit will then be considered a design fee and no money will be returned to the customer.

PANTRY WALL ELEVATION





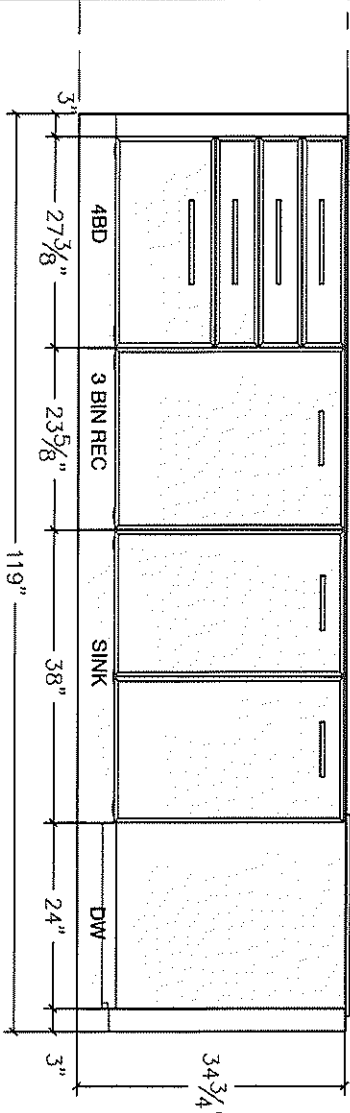
80 Sante Drive, Vaughan, ON L4K 3C4  
T 416.746.1811 F 905.761.5901  
www.QTK.ca info@qtk.ca

CLIENT: ROYAL PINE HOMES	JOB NAME: LOT 17 WRV2 (5008)	ROOM: KITCHEN	DRAWN BY: NS
SITE: WEST RIVER VALLEY PH2 SOUTH	DOOR STYLE: _	DOOR HANDLE: _	SCALE: 1/2" = 1'-0"
PHONE: _	FINISH: _	DRW HANDLE: _	DATE: JULY 22 2025
EMAIL: _	SPECIES: _	TOP: _	PAGE:

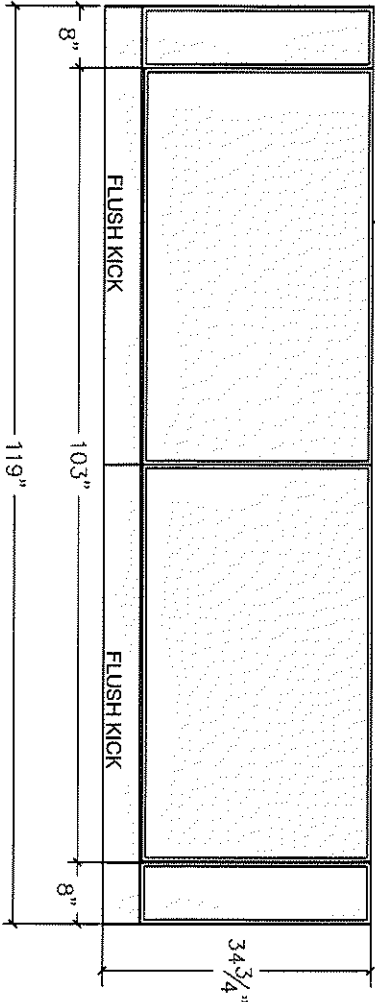
COMMENTS:

Customer Agrees and Accepts the following conditions: 1. The Drawing is a representation only and the installed cabinetry may vary NSightly in product size, measurements, handle appearance and location and other details. Although Quality Tops & Kitchens Ltd. (QTK) does it's best to manufacture exactly what is shown here outside factors may prevent that and some variance is to be expected and accepted by the customer. 2. These drawings represent the intellectual property of QTK and as such the customer understands and accepts that all deposits given by the customer to QTK are non-refundable after QTK has supplied drawings (either physically or electronically) to the customer. If the customer decides to cancel the order after QTK has submitted drawings to the customer, the deposit will then be considered a design fee and no money will be returned to the customer.

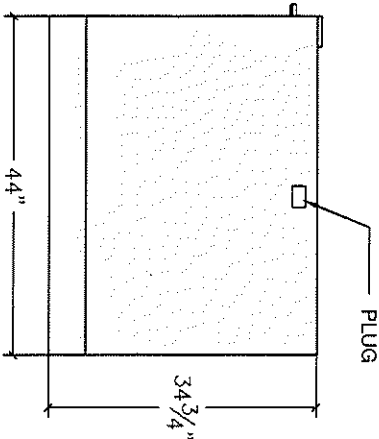
INSAND FRONT ELEVATION



INSAND REAR ELEVATION



INSAND SIDE ELEVATION





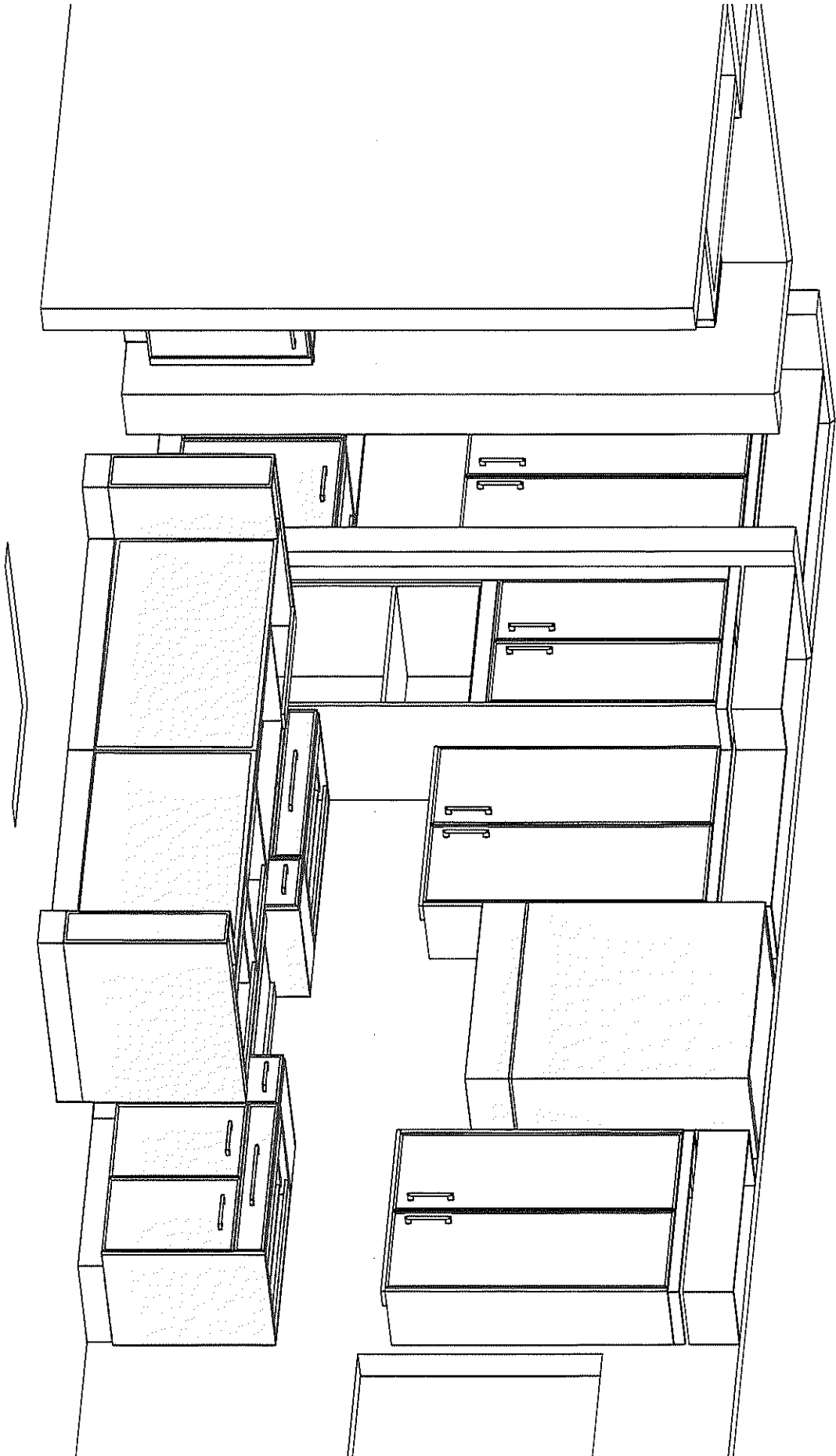


80 Sante Drive, Vaughan, ON L4K 3C4  
T 416.746.1811 F 905.761.5901  
www.QTK.ca info@qtk.ca

CLIENT: ROYAL PINE HOMES	JOB NAME: LOT 17 WRV2 (5008)	ROOM: KITCHEN	DRAWN BY: NS
SITE: WEST RIVER VALLEY PH2 SOUTH	DOOR STYLE: _	DOOR HANDLE: _	SCALE: 1/2" = 1'-0"
PHONE: _	FINISH: _	DRW HANDLE: _	DATE: JULY 22 2025
EMAIL: _	SPECIES: _	TOP: _	PAGE:

COMMENTS:

Customer Agrees and Accepts the following conditions: 1. The Drawing is a representation only and the installed cabinetry may vary NSlightly in product size, measurements, handle appearance and location and other details. Although Quality Tops & Kitchens Ltd. (QTK) does it's best to manufacture exactly what is shown here outside factors may prevent that and some variance is to be expected and accepted by the customer. 2. These drawings represent the intellectual property of QTK and as such the customer understands and accepts that all deposits given by the customer to QTK are non-refundable after QTK has supplied drawings (either physically or electronically) to the customer. If the customer decides to cancel the order after QTK has submitted drawings to the customer, the deposit will then be considered a design fee and no money will be returned to the customer.



KITCHEN 3D

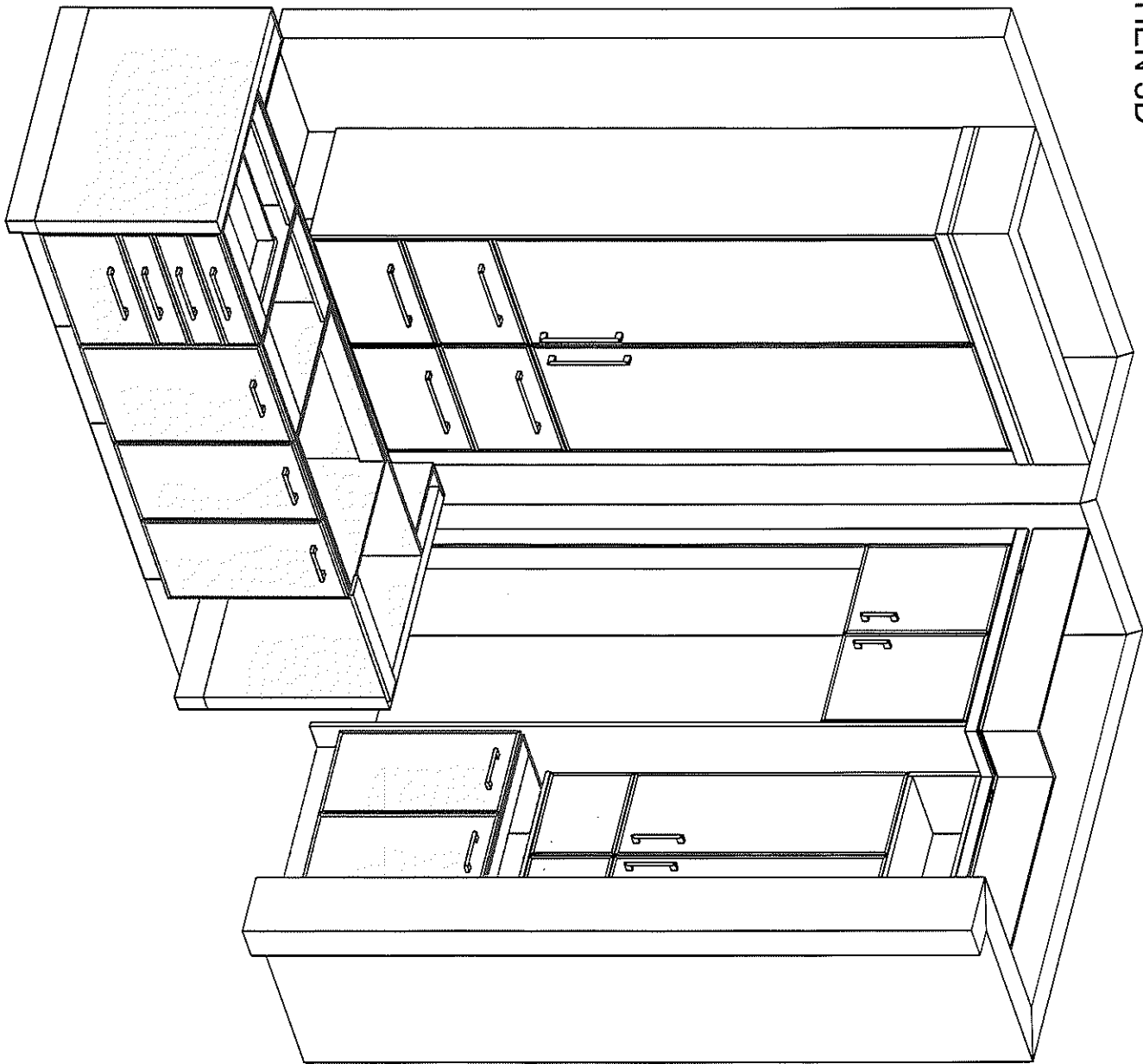


80 Sante Drive, Vaughan, ON L4K 3C4  
T 416.746.1811 F 905.761.5901  
www.QTK.ca info@qtk.ca

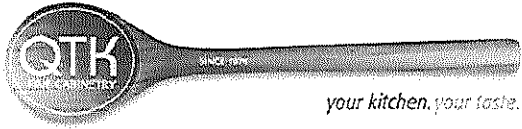
CLIENT: ROYAL PINE HOMES	JOB NAME: LOT 17 WRV2 (5008)	ROOM: KITCHEN	DRAWN BY: NS
SITE: WEST RIVER VALLEY PH2 SOUTH	DOOR STYLE: _	DOOR HANDLE: _	SCALE: 1/2" = 1'-0"
PHONE: _	FINISH: _	DRW HANDLE: _	DATE: JULY 22 2025
EMAIL: _	SPECIES: _	TOP: _	PAGE:

COMMENTS:

Customer Agrees and Accepts the following conditions: 1. The Drawing is a representation only and the installed cabinetry may vary NSightly in product size, measurements, handle appearance and location and other details. Although Quality Tops & Kitchens Ltd. (QTK) does it's best to manufacture exactly what is shown here outside factors may prevent that and some variance is to be expected and accepted by the customer. 2. These drawings represent the intellectual property of QTK and as such the customer understands and accepts that all deposits given by the customer to QTK are non-refundable after QTK has supplied drawings (either physically or electronically) to the customer. If the customer decides to cancel the order after QTK has submitted drawings to the customer, the deposit will then be considered a design fee and no money will be returned to the customer.



KITCHEN 3D



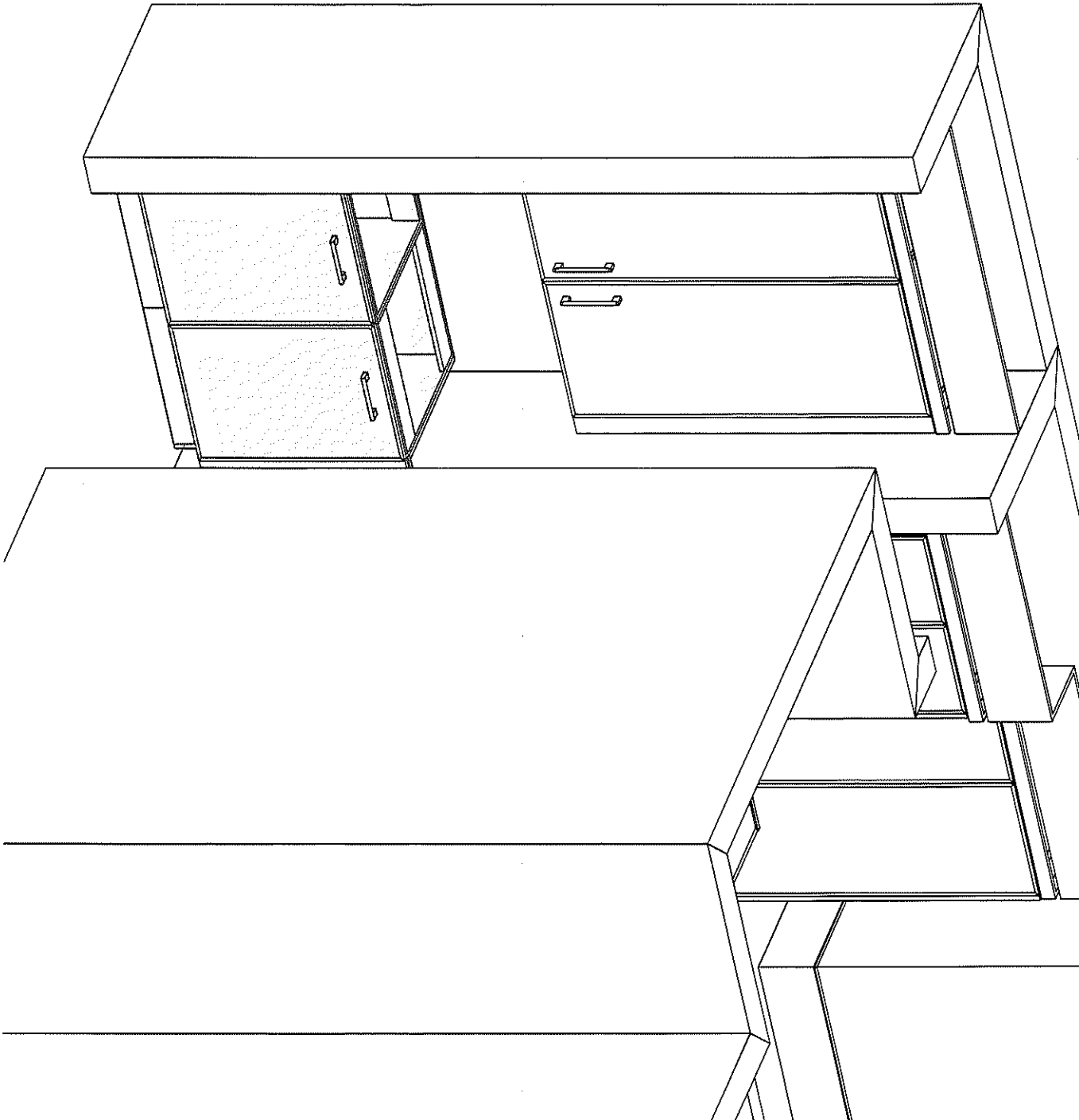
80 Sante Drive, Vaughan, ON L4K 3C4  
T 416.746.1811 F 905.761.5901  
www.QTK.ca info@qtk.ca

CLIENT: ROYAL PINE HOMES	JOB NAME: LOT 17 WRV2 (5008)	ROOM: KITCHEN	DRAWN BY: NS
SITE: WEST RIVER VALLEY PH2 SOUTH	DOOR STYLE: _	DOOR HANDLE: _	SCALE: 1/2" = 1'-0"
PHONE: _	FINISH: _	DRW HANDLE: _	DATE: JULY 22 2025
EMAIL: _	SPECIES: _	TOP: _	PAGE:

COMMENTS:

Customer Agrees and Accepts the following conditions: 1. The Drawing is a representation only and the installed cabinetry may vary NSightly in product size, measurements, handle appearance and location and other details. Although Quality Tops & Kitchens Ltd. (QTK) does it's best to manufacture exactly what is shown here outside factors may prevent that and some variance is to be expected and accepted by the customer. 2. These drawings represent the intellectual property of QTK and as such the customer understands and accepts that all deposits given by the customer to QTK are non-refundable after QTK has supplied drawings (either physically or electronically) to the customer. If the customer decides to cancel the order after QTK has submitted drawings to the customer, the deposit will then be considered a design fee and no money will be returned to the customer.

KITCHEN 3D







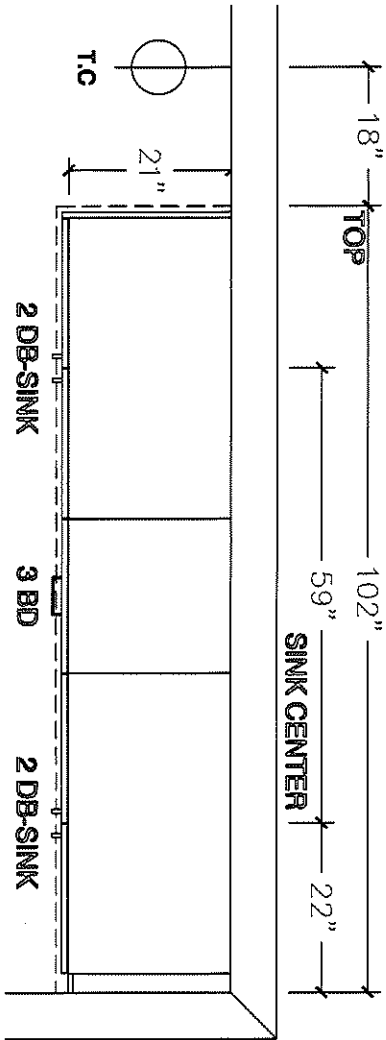
80 Sante Drive, Vaughan, ON L4K 3C4  
T 416.746.1811 F 905.761.5901  
www.QTK.ca info@qtk.ca

CLIENT: ROYAL PINE HOMES	JOB NAME: LOT 17 WRV2 (5008)	ROOM: VANITY	DRAWN BY: NS
SITE: WEST RIVER VALLEY PH2 SOUTH	DOOR STYLE: __	DOOR HANDLE: __	SCALE: 1/2" = 1'-0"
PHONE: __	FINISH: __	DRW HANDLE: __	DATE: JULY 22 2025
EMAIL: __	SPECIES: __	TOP: __	PAGE:

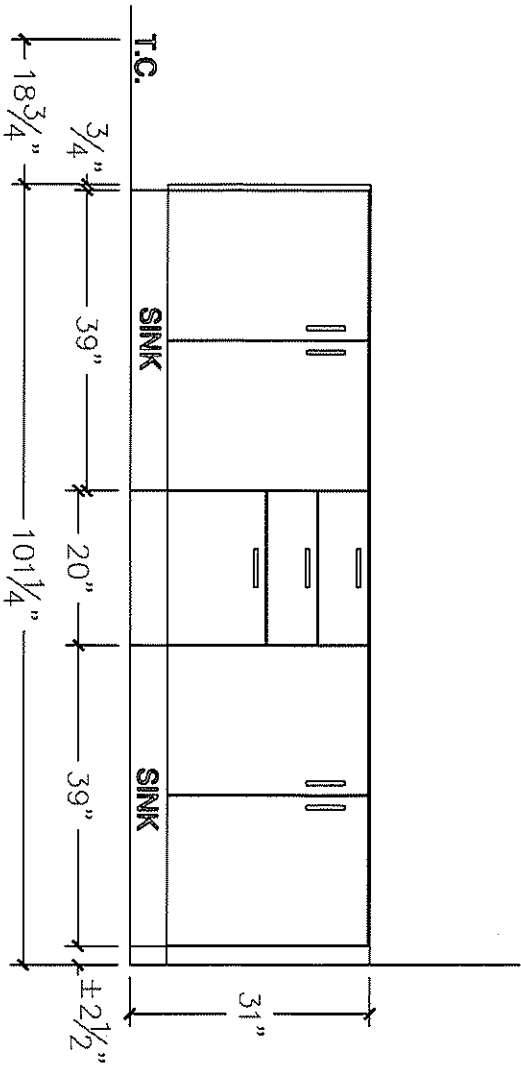
COMMENTS:

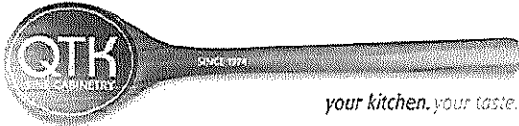
Customer Agrees and Accepts the following conditions: 1. The Drawing is a representation only and the installed cabinetry may vary NSlightly in product size, measurements, handle appearance and location and other details. Although Quality Tops & Kitchens Ltd. (QTK) does it's best to manufacture exactly what is shown here outside factors may prevent that and some variance is to be expected and accepted by the customer. 2. These drawings represent the intellectual property of QTK and as such the customer understands and accepts that all deposits given by the customer to QTK are non-refundable after QTK has supplied drawings (either physically or electronically) to the customer. If the customer decides to cancel the order after QTK has submitted drawings to the customer, the deposit will then be considered a design fee and no money will be returned to the customer.

MASTER ENSUITE PLAN



MASTER ENSUITE ELEVATION





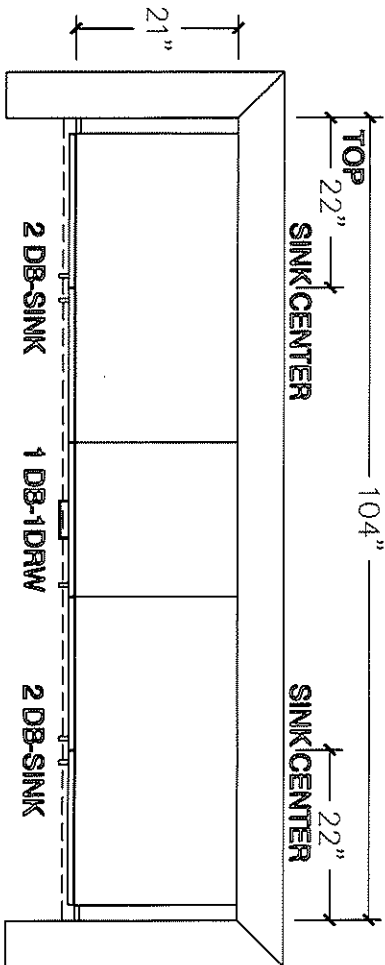
80 Sante Drive, Vaughan, ON L4K 3C4  
T 416.746.1811 F 905.761.5901  
www.QTK.ca info@qtk.ca

CLIENT: ROYAL PINE HOMES	JOB NAME: LOT 17 WRV2 (5008)	ROOM: VANITY	DRAWN BY: NS
SITE: WEST RIVER VALLEY PH2 SOUTH	DOOR STYLE: __	DOOR HANDLE: __	SCALE: 1/2" = 1'-0"
PHONE: __	FINISH: __	DRW HANDLE: __	DATE: JULY 22 2025
EMAIL: __	SPECIES: __	TOP: __	PAGE:

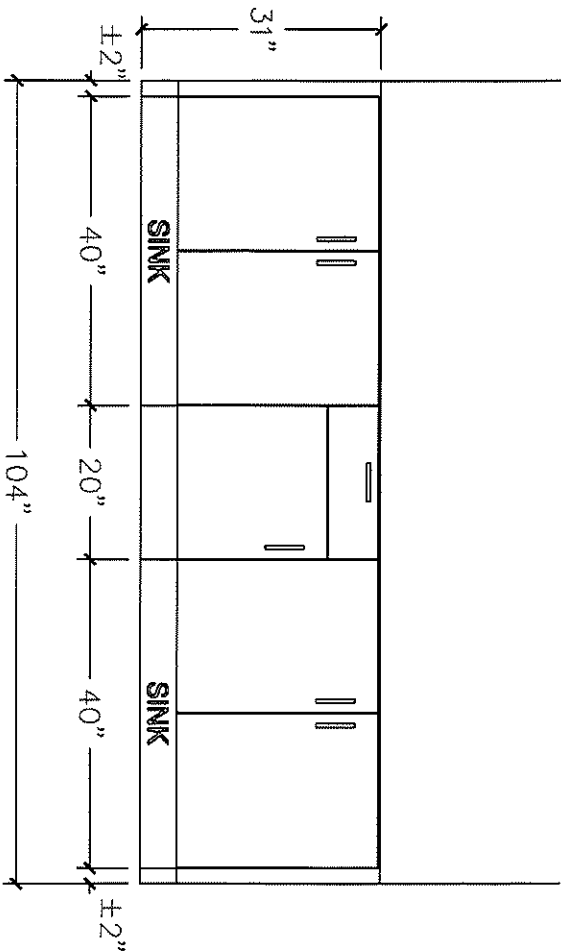
COMMENTS:

Customer Agrees and Accepts the following conditions: 1. The Drawing is a representation only and the installed cabinetry may vary NSightly in product size, measurements, handle appearance and location and other details. Although Quality Tops & Kitchens Ltd. (QTK) does it's best to manufacture exactly what is shown here outside factors may prevent that and some variance is to be expected and accepted by the customer. 2. These drawings represent the intellectual property of QTK and as such the customer understands and accepts that all deposits given by the customer to QTK are non-refundable after QTK has supplied drawings (either physically or electronically) to the customer. If the customer decides to cancel the order after QTK has submitted drawings to the customer, the deposit will then be considered a design fee and no money will be returned to the customer.

SHARED BATH PLAN



SHARED BATH ELEVATION





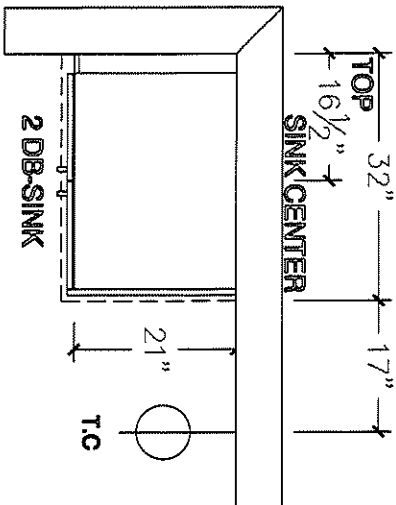
80 Sante Drive, Vaughan, ON L4K 3C4  
T 416.746.1811 F 905.761.5901  
www.QTK.ca info@qtk.ca

CLIENT: ROYAL PINE HOMES	JOB NAME: LOT 17 WRV2 (5008)	ROOM: VANITY	DRAWN BY: NS
SITE: WEST RIVER VALLEY PH2 SOUTH	DOOR STYLE: __	DOOR HANDLE: __	SCALE: 1/2" = 1'-0"
PHONE: __	FINISH: __	DRW HANDLE: __	DATE: JULY 22 2025
EMAIL: __	SPECIES: __	TOP: __	PAGE:

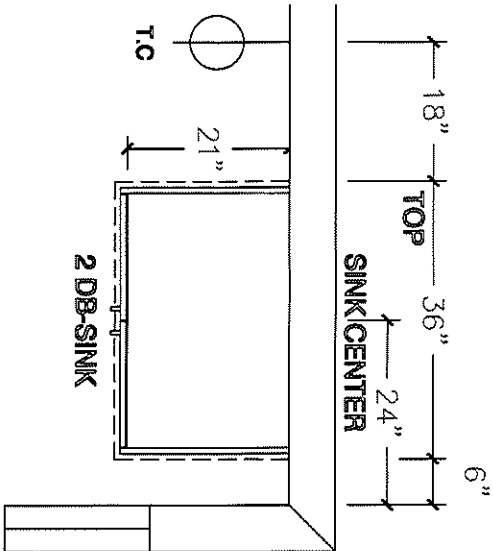
COMMENTS:

Customer Agrees and Accepts the following conditions: 1. The Drawing is a representation only and the installed cabinetry may vary NSlightly in product size, measurements, handle appearance and location and other details. Although Quality Tops & Kitchens Ltd. (QTK) does it's best to manufacture exactly what is shown here outside factors may prevent that and some variance is to be expected and accepted by the customer. 2. These drawings represent the intellectual property of QTK and as such the customer understands and accepts that all deposits given by the customer to QTK are non-refundable after QTK has supplied drawings (either physically or electronically) to the customer. If the customer decides to cancel the order after QTK has submitted drawings to the customer, the deposit will then be considered a design fee and no money will be returned to the customer.

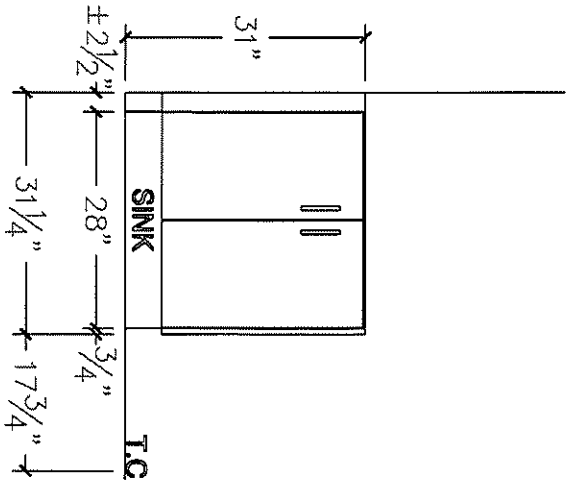
BATH 2 PLAN



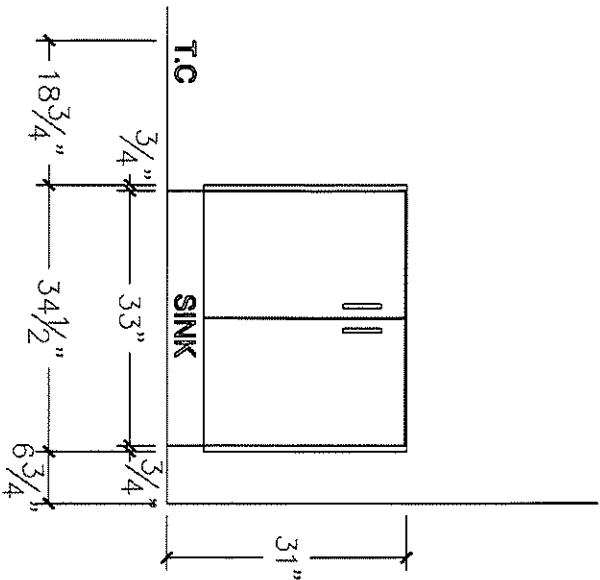
BATH 3 PLAN

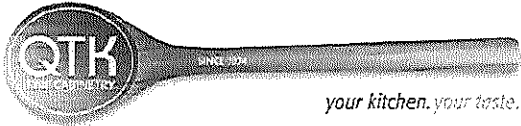


BATH 2 ELEVATION



BATH 3 ELEVATION





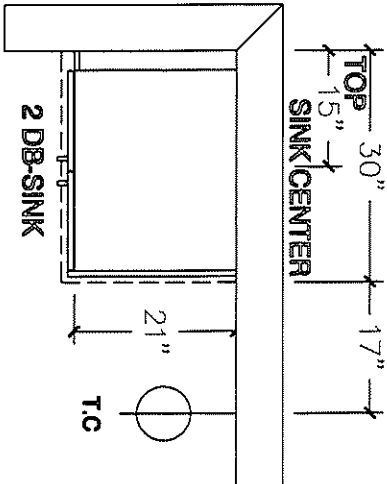
80 Sante Drive, Vaughan, ON L4K 3C4  
T 416.746.1811 F 905.761.5901  
www.QTK.ca info@qtk.ca

CLIENT: ROYAL PINE HOMES	JOB NAME: LOT 17 WRV2 (5008)	ROOM: VANITY	DRAWN BY: NS
SITE: WEST RIVER VALLEY PH2 SOUTH	DOOR STYLE: _	DOOR HANDLE: _	SCALE: 1/2" = 1'-0"
PHONE: _	FINISH: _	DRW HANDLE: _	DATE: JULY 22 2025
EMAIL: _	SPECIES: _	TOP: _	PAGE:

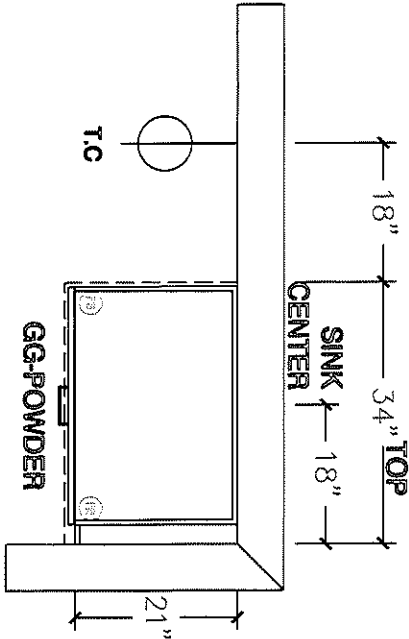
COMMENTS:

Customer Agrees and Accepts the following conditions: 1. The Drawing is a representation only and the installed cabinetry may vary NSlightly in product size, measurements, handle appearance and location and other details. Although Quality Tops & Kitchens Ltd. (QTK) does it's best to manufacture exactly what is shown here outside factors may prevent that and some variance is to be expected and accepted by the customer. 2. These drawings represent the intellectual property of QTK and as such the customer understands and accepts that all deposits given by the customer to QTK are non-refundable after QTK has supplied drawings (either physically or electronically) to the customer. If the customer decides to cancel the order after QTK has submitted drawings to the customer, the deposit will then be considered a design fee and no money will be returned to the customer.

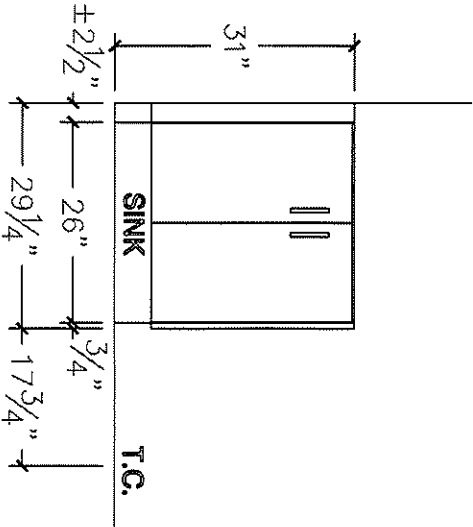
IN LAW BATH PLAN



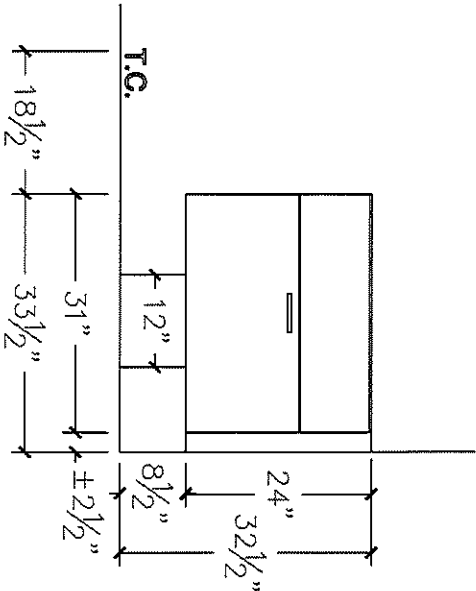
POWDER PLAN



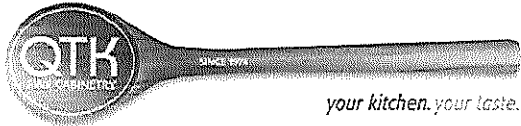
IN LAW BATH ELE



POWDER ELEVATION







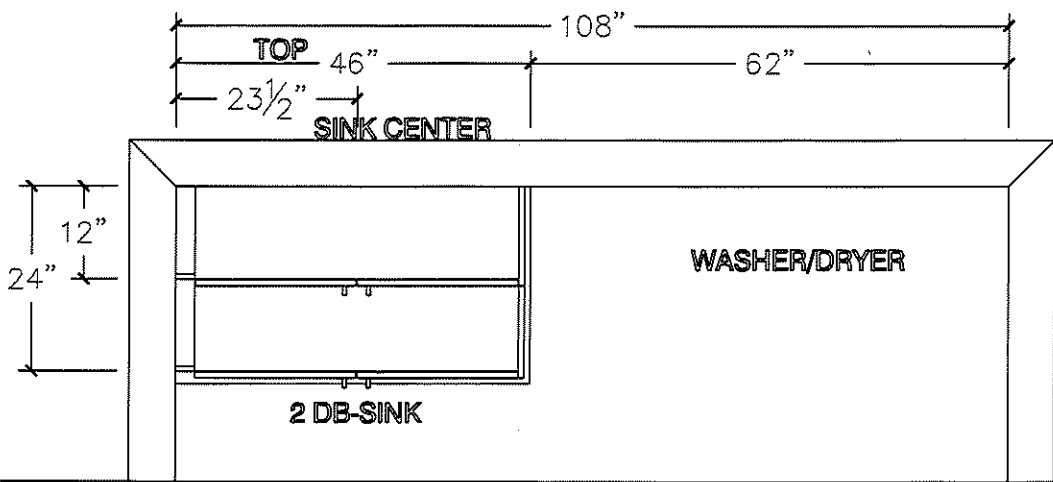
80 Sante Drive, Vaughan, ON L4K 3C4  
T 416.746.1811 F 905.761.5901  
www.QTK.ca info@qtk.ca

CLIENT: ROYAL PINE HOMES	JOB NAME: LOT 17 WRV2 (5008)	ROOM: LAUNDRY	DRAWN BY: NS
SITE: WEST RIVER VALLEY PH2 SOUTH	DOOR STYLE: __	DOOR HANDLE: __	SCALE: 1/2" = 1'-0"
PHONE: __	FINISH: __	DRW HANDLE: __	DATE: JULY 22 2025
EMAIL: __	SPECIES: __	TOP: __	PAGE:

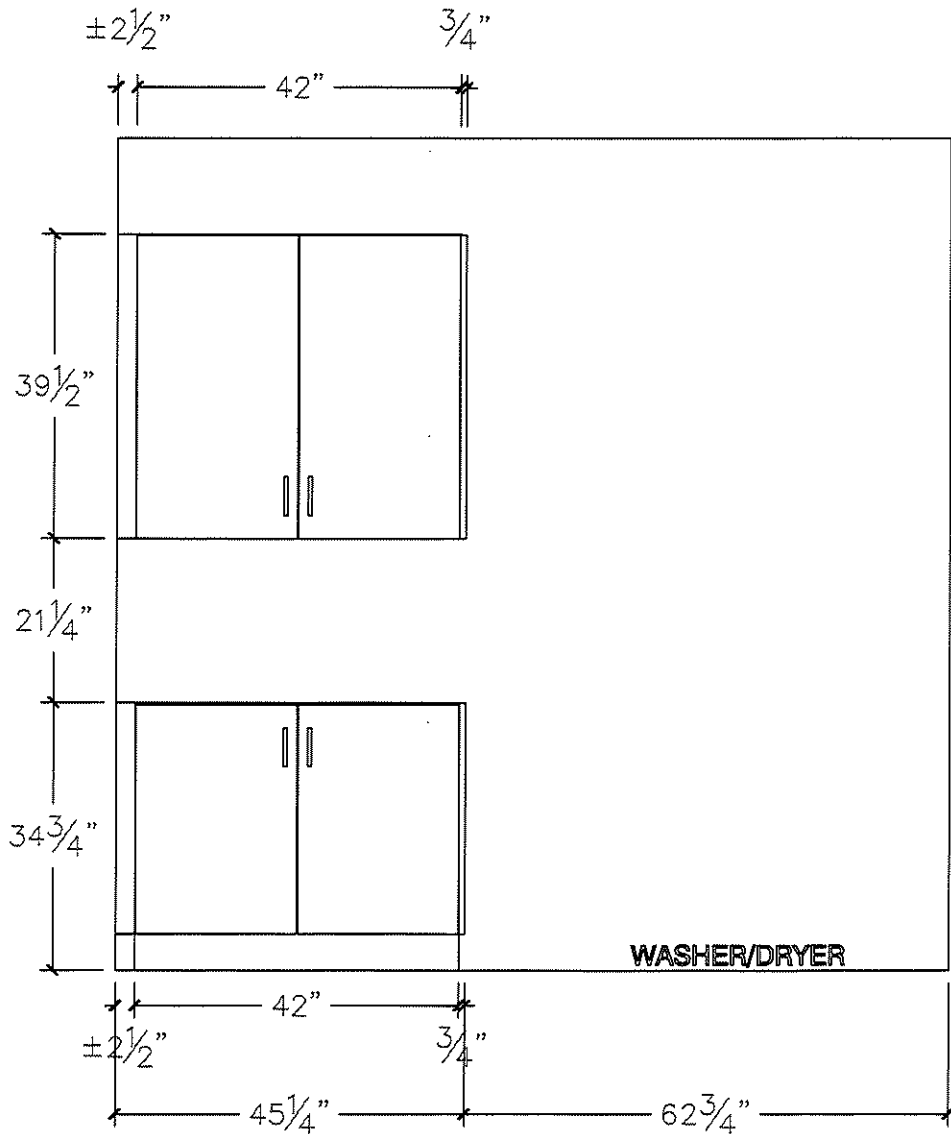
COMMENTS:

Customer Agrees and Accepts the following conditions: 1. The Drawing is a representation only and the installed cabinetry may vary slightly in product size, measurements, handle appearance and location and other details. Although Quality Tops & Kitchens Ltd. (QTK) does it's best to manufacture exactly what is shown here outside factors may prevent that and some variance is to be expected and accepted by the customer. 2. These drawings represent the intellectual property of QTK and as such the customer understands and accepts that all deposits given by the customer to QTK are non-refundable after QTK has supplied drawings (either physically or electronically) to the customer. If the customer decides to cancel the order after QTK has submitted drawings to the customer, the deposit will then be considered a design fee and no money will be returned to the customer.

LAUNDRY PLAN



LAUNDRY ELEVATION



# BLANCO

## Sink Specifications

Colour                      SKU  
satin polish                401519

### Design and planning tips

- Min cabinet size: 36 in ( 915 mm )

#### Specifications:

3 ½" stainless steel strainer(s), Installation  
Instructions, Cut-out template, Undermount clips,  
Limited Lifetime Warranty

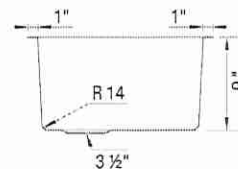
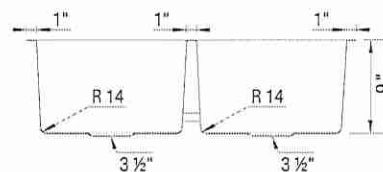
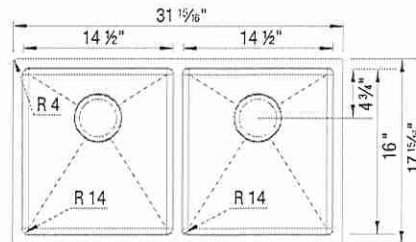
### Codes & Standards

ASME A112.19.3-2017/CSA B45.4-17

### Optional Accessories

Ash Cutting Board            406345  
CapFlow Strainer Cover    517666  
Sink Grid                      233080  
Foldable Grid                238483

## QUATRUS R15 U 2



### Warranty

Limited lifetime warranty on all sinks and faucets. One-year warranty on all accessories and soap dispensers.

### Code/Standards Compliance

BLANCO sinks and faucets are third-party tested and certified to CSA, cUPC, ANSI/ASME, IAPMO and NSF standards and listed by applicable certification bodies. For more information on individual product listings, contact our office or listing organization.



Need support? Learn more by watching our sink & faucet How-to videos:  
<https://www.blanco.com/ca-en/support/how-to-videos/how-to-videos-for-sinks/>



BLANCO Canada Inc  
100 Corporation Drive  
Brampton ON L6S 6B5

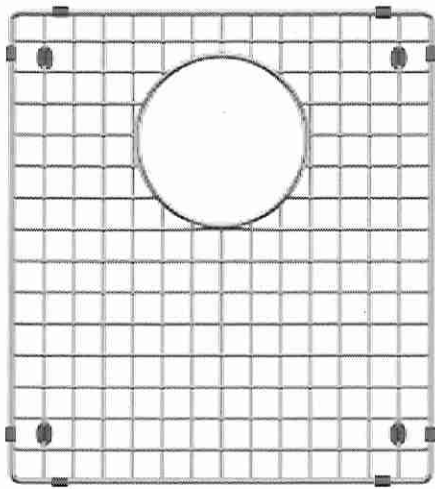
#### Tel & Fax

Tel: 905-494-2400 Toll free: 1-877-425-2626  
Fax: 905-494-2425 Toll free: 1-877-825-2626

While BLANCO strives to provide accurate information, all images and dimensions in this document are intended for reference only and are subject to change at any time without notice. This document is not intended for use as an installation guide. For technical installation details, refer to installation instructions provided with the product. BLANCO assumes no responsibility for the use of superseded or voided specifications.

LOT 17  
Kitchen Sink

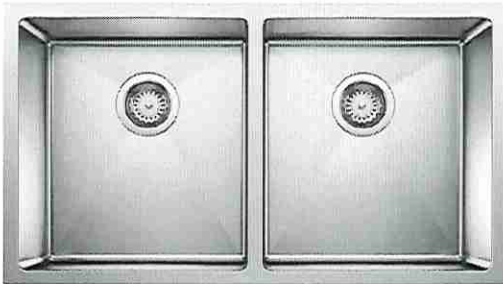
may 15/18  
2x



## SINK GRID

SKU 233080

Fits QUATRUS U 2 R0/R15



## QUATRUS R15 U 2

Stainless steel satin polish | SKU 401519

- 3 1/2" stainless steel strainer(s)
- Installation Instructions
- Cut-out template
- Undermount clips
- Limited Lifetime Warranty

LOT 17  
KITCHEN  
SINK

myke  
Zur

# BLANCO

## Sink Specifications

Colour                      SKU  
satin polish                401245

### Design and planning tips

- Min cabinet size: 21 in ( 535 mm )

### Specifications:

3 ½" stainless steel strainer(s), Installation  
Instructions, Cut-out template, Undermount clips,  
Limited Lifetime Warranty

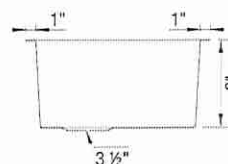
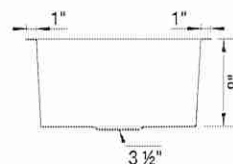
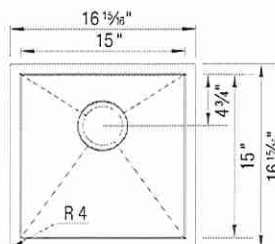
### Codes & Standards

ASME A112.19.3-2017/CSA B45.4-17

### Optional Accessories

CapFlow Strainer Cover    517666  
Sink Grid                      235950

## QUATRUS U Bar



### Warranty

Limited lifetime warranty on all sinks and faucets. One-year warranty on all accessories and soap dispensers.

### Code/Standards Compliance

BLANCO sinks and faucets are third-party tested and certified to CSA, cUPC, ANSI/ASME, IAPMO and NSF standards and listed by applicable certification bodies. For more information on individual product listings, contact our office or listing organization.



Need support? Learn more by watching our sink & faucet How-to videos:

<https://www.blanco.com/ca-en/support/how-to-videos/how-to-videos-for-sinks/>



BLANCO Canada Inc  
100 Corporation Drive  
Brampton ON L6S 6B5

### Tel & Fax

Tel: 905-494-2400 Toll free: 1-877-425-2626

Fax: 905-494-2425 Toll free: 1-877-825-2626

While BLANCO strives to provide accurate information, all images and dimensions in this document are intended for reference only and are subject to change at any time without notice. This document is not intended for use as an installation guide. For technical installation details, refer to installation instructions provided with the product. BLANCO assumes no responsibility for the use of superseded or voided specifications.

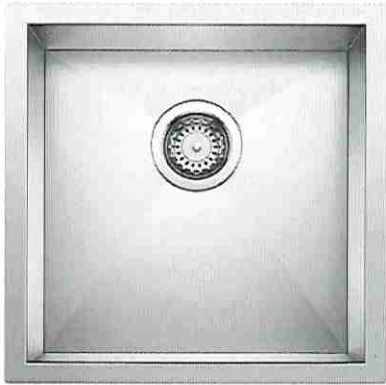
LOT 17

Servery • Sink upgrade

May 18/20

[Signature]



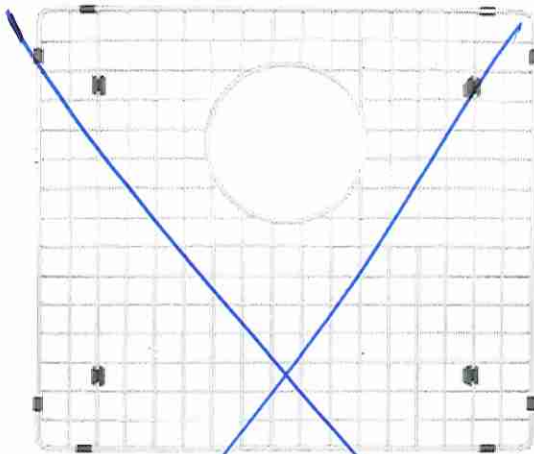


## QUATRUS U BAR

Stainless steel satin polish

SKU 401245

- 3 1/2" stainless steel strainer(s)
- Installation Instructions
- Cut-out template
- Undermount clips
- Limited Lifetime Warranty



## SINK GRID

SKU 235950

Fits QUATRUS BAR

LOT 17

Servy Sink Upgrade

*mg12*

*[Signature]*

CATENA  
RECTANGULAR UNDERMOUNT SINK

4210CIY Undermount Sink

PRODUCT SPECS:

- Vitreous china
- Front overflow hole
- Template supplied
- Mounting clips not included

DIMENSIONS:

Outer:

510mm W x 390mm D x 190mm H  
20" W x 15 3/8" D x 7 1/2" H

Inner:

458mm W x 340mm D x 140mm H  
18" W x 13 3/8" D x 5 1/2" H

COMPLIANCE CERTIFICATIONS

Meets or exceeds the following:

- IAPMO cUPC
- ASME A112.19.2 / CSA B45.1
- ADA Guidelines & ANSI A117.1
- OBC Section 3.8 Barrier Free design and CSA B651 Standard

SHIPPING

Cube 1.72  
GW 27 lbs

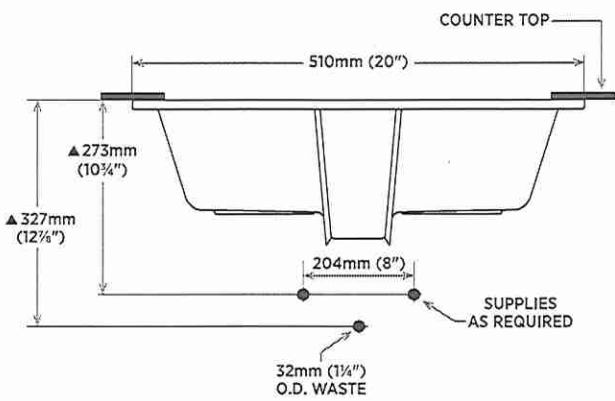
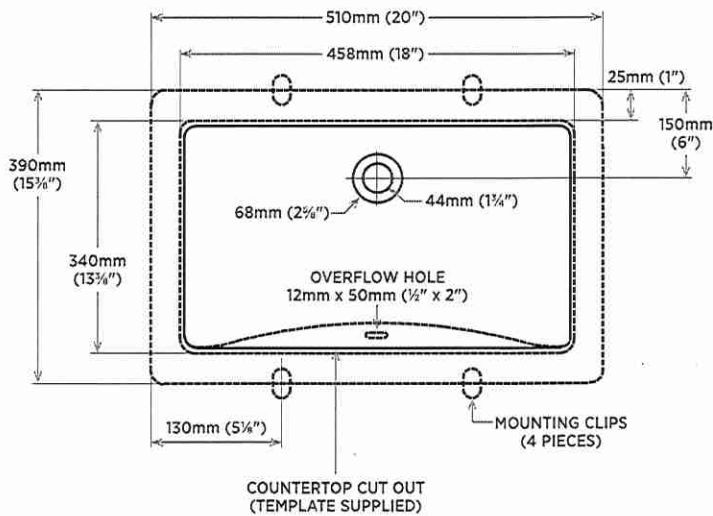


TO BE SPECIFIED

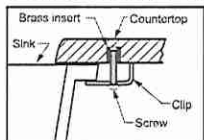
Colour:  
■ Soft White

NOTES: Dimensions of fixtures are nominal and may vary within the range of tolerances established by ASME standard A112.19.2. These measurements are subject to change or cancellation. No responsibility is assumed for use of superseded or voided pages.

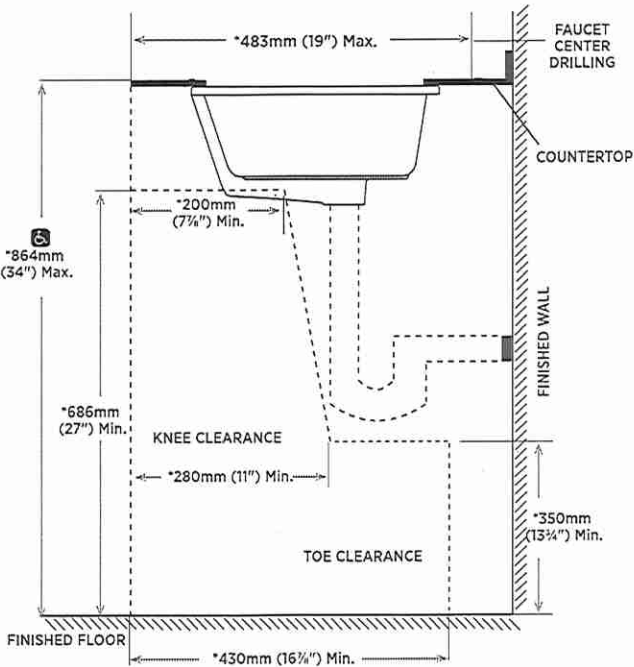
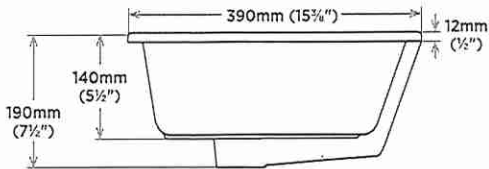
Products are designed to comply with ADA/ANSI A117.1, CSA B651 Standard and OBC barrier-free requirements. It shall be the responsibility of the installer to comply with the local disability codes and standards prior to installing the product.



DETAIL OF MOUNTING CLIP



Note:  
▲ Dimensions shown for location of supplies and "P" trap are suggested.



NOTE: \* Starred measurements comply with ADA and OBC barrier free accessibility requirements.

REVISED JULY 2020

contrac

5970 CHEDWORTH WAY, UNIT B, MISSISSAUGA, ONTARIO, CANADA L5R 4G5 | CONTRAC.CA

LOT 17  
Powder Sink.

myke  
Lee



DELTA - PET WASH STATION		model #
Trinsic Valve Trim (on/off)		T14059
Rough In		R10000-PX
7-Setting Wall Mount Hand Shower with Cleaning Spray		55884-PR
Wall Elbow		50560-PR

LOT 17.

DOG WASH

*make*  
*2*



see what Delta can do™

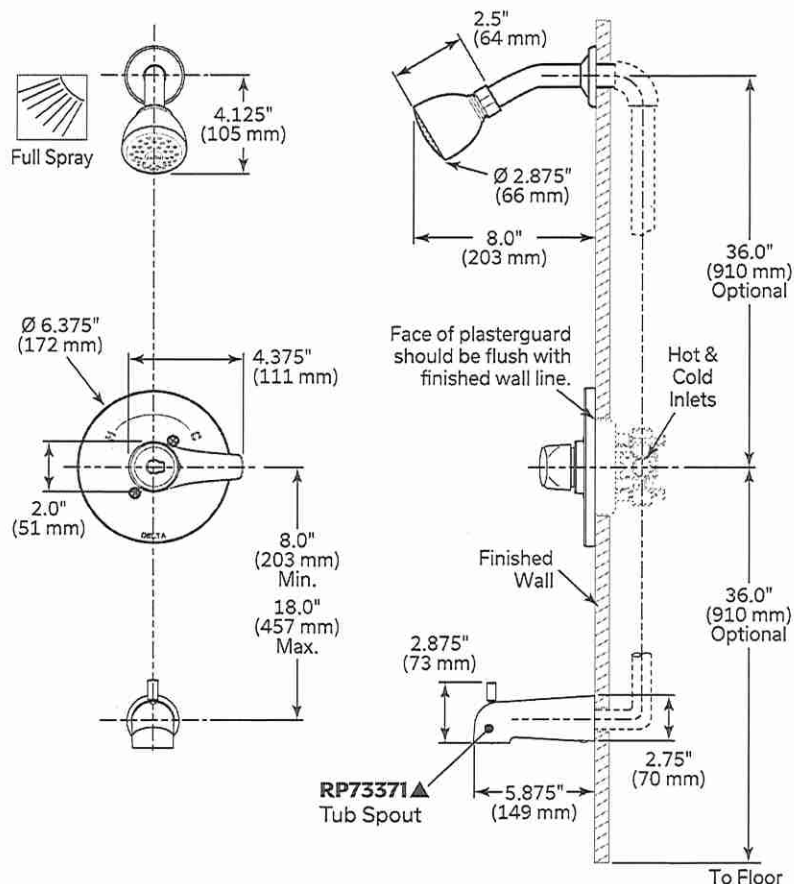


T14434A

## Tub And Shower Faucet Trim

- ☐ Wynne™ Collection
- ☐ Valve Only Trim (T14034 Series)
- ☐ Shower Only Trim (T14234 Series)
- ☐ Tub/Shower Trim (T14434 Series)

- Monitor® 14 Series pressure balanced bath mixing valve with Scald-Guard®
- Back-to-back installation capability
- Field adjustable to limit handle rotation into hot water zone
- 120° maximum handle rotation
- For use with MultiChoice® Universal rough valve body (R10000 Series)
- All parts replaceable from the front of the valve
- Temperature only controlled with handle
- Monitor® 14 Series pressure balanced shower valve maintains a balanced pressure of hot and cold water even when a valve is turned on or off elsewhere in the system
- 1/2" (13 mm) C.W.T slip-on spout
- Maximum flow rate of shower head: 1.75 gpm (6.6 L/min)

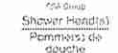


### Complies With

- ASME A112.18.1 / CSA B125.1
- ASSE 1016-P



- EPA WaterSense® (T14234 and T14434 models only)



- 
 Lever Handle Only  
 Poignée à levier seulement
- Indicates compliance to ICC/ANSI A117.1

(Contact Delta Representative for State and/or Local Approvals.)

**Masco Canada Limited** reserves the right (1) to make changes in specifications and materials, and (2) to change or discontinue models, both without notice or obligation. See current full-line price book or [www.deltatafauet.ca](http://www.deltatafauet.ca) for finish options and product availability.

**WaterSense®** is a registered trademark of the U.S. Environmental Protection Agency.

▲ Designate Proper Finish Suffix.

Dimensions are for reference only, measurements may vary  $\pm 0.25"$  (6 mm).  
Maximum flow rates - 60 psi (414 kPa)

© 2025 Masco Canada Limited  
350 South Edgware Road, St. Thomas, ON N5P 4L1  
55 E. 111th Street, Indianapolis, IN 46280

**DSP-B-T14034, Rev. B**

Lot 17  
In Law Enquire

May 1784





T14034 ▲



T14234 ▲



T14434 ▲



voyez ce que Delta peut faire

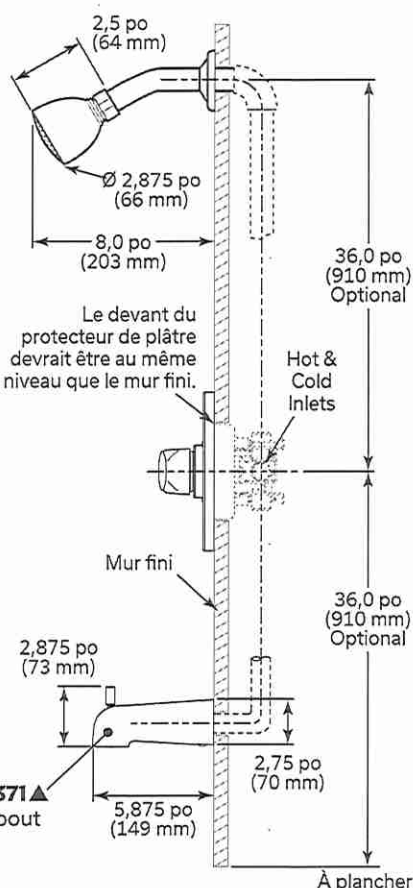
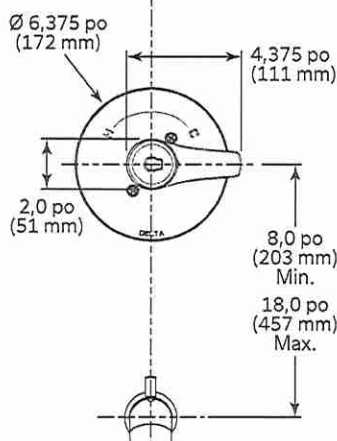
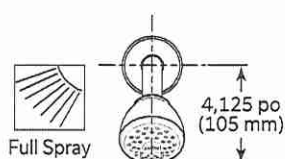
## Garniture de Robinet de Baignoire et Douche

- ☐ Collection Wynne™
- ☐ Garniture pour soupape seulement (Série T14034)
- ☐ Garniture pour douche seulement (Série T14234)
- ☐ Garniture pour baignoire et douche (Série T14434)

No de modèle soumis : \_\_\_\_\_  
Caractéristiques spécifiques : \_\_\_\_\_

### Spécifications Standards

- Garniture de soupape à pression équilibrée Monitor™ série 14 avec mitigeur Scald-Guard™
- Possibilité d'installation dos à dos
- Réglable sur place pour limiter la rotation de la poignée dans la zone d'eau chaude
- Rotation maximale de la poignée - 120°
- À utiliser avec le corps de la soupape de la plomberie brute universelle MultiChoice™ (R10000 Series)
- Toutes les pièces peuvent être remplacées par l'avant de la soupape
- La température est contrôlée uniquement par la poignée
- La soupape de douche de la série Monitor™ 14 à pression équilibrée maintient une pression égale de l'eau chaude et froide même si une soupape est ouverte ou fermée ailleurs dans le système
- Bec à insérer sur un tuyau de 1/2 po (13 mm)
- Débit maximal de pomme de douche : 1,75 gpm (6,6 L/min)



RP73371 ▲  
Tub Spout

### Conforme à

- ASME A112.18.1 / CSA B125.1
- ASSE 1016-P



EPA WaterSense® (T14234 et T14434 modèles seulement)



Lever Handle Only  
Poignée à levier  
seulement

Indique la conformité à  
ICC/ANSI A11

(Communiquez avec un représentant Delta pour connaître les approbations d'État et/ou locales.)

Masco Canada Limited se réserve le droit (1) d'effectuer des changements dans les spécifications et les matériaux, et (2) de modifier ou d'abandonner certains modèles, dans les deux cas sans préavis ni obligation. Consultez le livre des prix courants de la gamme complète ou [www.deltafaucets.ca](http://www.deltafaucets.ca) pour la disponibilité des produits et des options.

WaterSense™ est une marque déposée de l'Agence de protection de l'environnement des États-Unis.

▲ Désigne le suffixe approprié de la finition.

Les dimensions ne sont fournies qu'à titre de référence seulement, les mesures peuvent varier de ± 0,25 po (6 mm).

Débits maximum - 60 psi (414 kPa).

© 2025 Masco Canada Limited

350 South Edgeware Road, St. Thomas, ON N5P 4L1  
55 E. 111th Street, Indianapolis, IN 46280

DSP-B-T14034, Rev. B

LOT 17  
In Law

Mog/ASdr  
2

# Trim Only Round Pressure Balance Shower Kit

MODEL#: DF-TKIT1-PBR

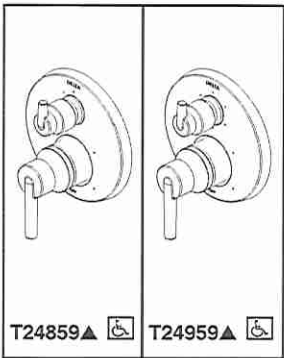
Finish: Chrome



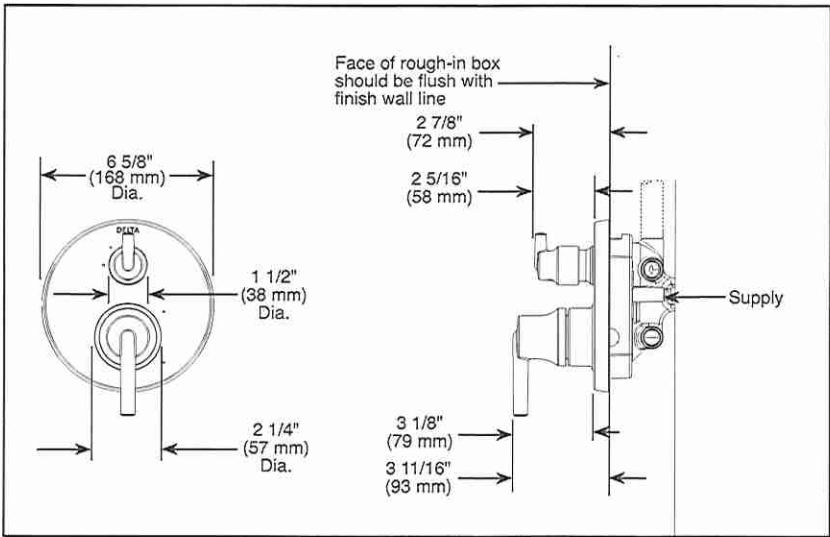
LOT 17

Twin Bath 4 15

May 11/2011  
L

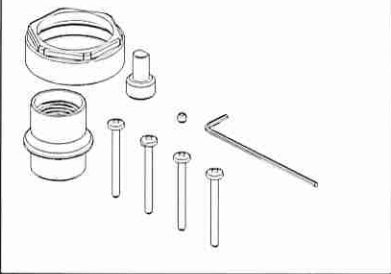


Submitted Model No.: \_\_\_\_\_  
 Specific Features: \_\_\_\_\_



▲ Designate Proper Finish Suffix

RP90542 Available Thick Wall Installation Kit



see what Delta can do™

## INTEGRATED SHOWER DIVERTER TRIM

- Contemporary Valve Trim with Three Function Diverter (T24859)
- Contemporary Valve Trim with Six Function Diverter (T24959)

### FEATURES:

- Monitor® 14 Series pressure balanced single function bath mixing valve trim
- Three or six function diverter

### STANDARD SPECIFICATIONS:

- Main control utilizes single-function pressure balanced cartridge.
- Maintains a balanced pressure of hot and cold water even when a valve is turned on or off elsewhere in the system.
- For use with MultiChoice® Universal rough valve body. (R22000 Series)
- Top handle controls diverter functions.
- Bottom handle controls on/off and temperature.
- Field adjustable to limit handle rotation into hot water zone.
- Bottom handle 120° Maximum rotation.
- Red/Blue indicator markings.
- Three function diverter for 2 individual positions, 1 shared position.
- For two individual functions, no shared functions, order additional RP71717.
- Six function diverter for 3 individual positions, 3 shared positions.
- For three individual functions, no shared functions, order additional RP71718.
- Cartridges included.
- Standard installation allows up to 1 1/8" finished wall thickness.
- Thick wall installation kit (RP90542▲) can be ordered to allow for up to 2 1/8" finished wall thickness.

### WARRANTY

- Lifetime limited warranty on parts (other than electronic parts and batteries) and finishes; or, for commercial users, for 5 years from date of purchase.
- 5 year limited warranty on electronic parts (other than batteries); or, for commercial users, for 1 year from the date of purchase. No warranty is provided on batteries.

### COMPLIES WITH:

- ASME A112.18.1 / CSA B125.1
- Indicates compliance to ICC/ANSI A117.1

Maximum Flow Rate Guide

Rough	Cartridge	Outlet	40 psi	60 psi	80 psi
R22000	14S	Shower	4.1 gpm	5.0 gpm	5.8 gpm
R22000-WS	14S	Shower	3.9 gpm	4.8 gpm	5.6 gpm

Based on 6 Setting Diverter

**Delta Faucet Company**  
 55 E. 111th Street, Indianapolis, IN 46280  
 350 South Edgeware Road, St. Thomas, ON N5P 4L1  
 © 2018 Delta Faucet Company

Delta reserves the right (1) to make changes in specifications and materials, and (2) to change or discontinue models, both without notice or obligation. Dimensions are for reference only. See current full-line price book or www.deltafaucet.com for finish options and product availability.

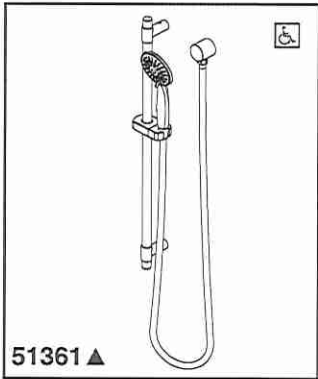
DSP-B-T24859 Rev. F

Turn Bath

May 18/2018

[Signature]

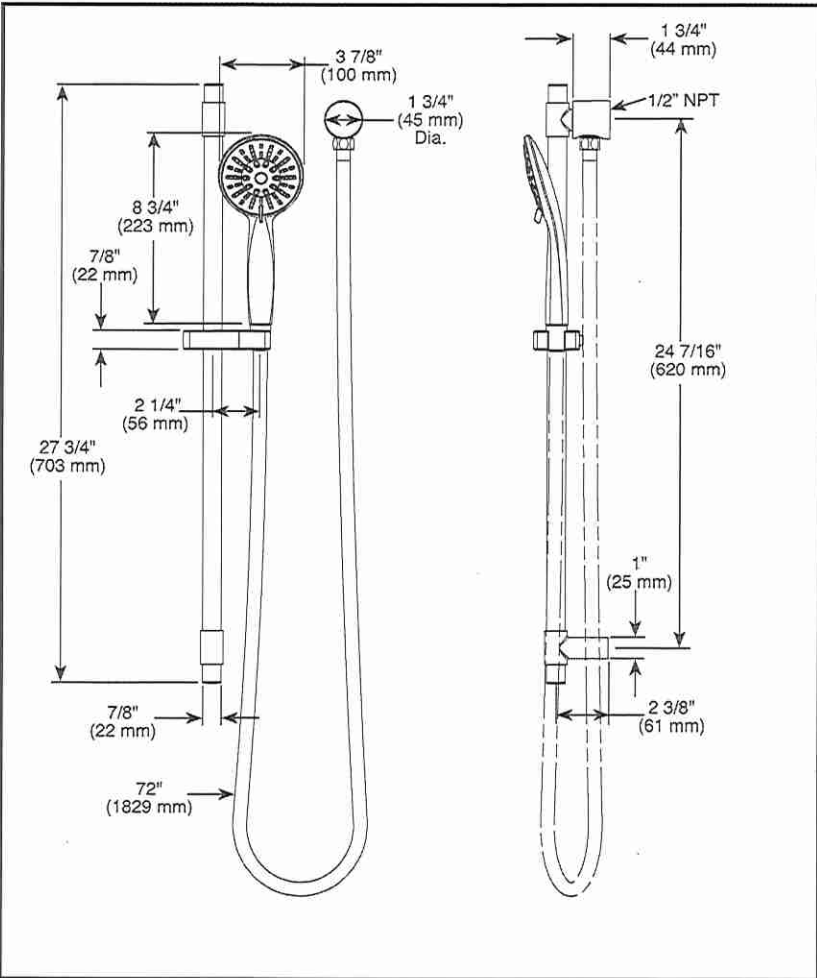




51361 ▲

Submitted Model No.: \_\_\_\_\_

Specific Features: \_\_\_\_\_



▲ Designate proper finish suffix

#### Spray Patterns



Full Body  
Spray



Massage  
Spray



Full Spray  
w/ Massage



Pause

Delta reserves the right (1) to make changes in specifications and materials, and (2) to change or discontinue models, both without notice or obligation. Dimensions are for reference only. See current full-line price book or [www.deltafaucet.com](http://www.deltafaucet.com) for finish options and product availability.

DSP-B-51361 Rev. B



see what Delta can do™

## HAND SHOWER

### ■ 4-Spray Setting Hand Shower

#### FEATURES:

- Touch-Clean® Nozzles

#### STANDARD SPECIFICATIONS:

- Max flow rate 1.75 gpm @ 80 psi, 6.6 L/min @ 550 kPa
- Hand held shower with 4 spray settings
- Easy turn dial to change hand shower spray settings, includes pause, a non-positive shut-off
- Certified dual check valves for backflow prevention
- 72" (1524 mm) stainless steel hose
- 24" slide bar with adjustable slide (allows for adjustable shower height). Not to be used as a grab bar.
- Slide bar hand shower mount for hands-free showering
- Wall elbow with brass waterway
- ADA compliant hand shower and hose when installed per accessibility guidelines of the act

#### WARRANTY

- Parts and Finish - Lifetime limited warranty; or for commercial purchasers, 10 years for multi-family residential (apartments and condominiums) and 5 years for all other commercial uses, in each case from the date of purchase.
- Electronic Parts and Batteries (if applicable) - 5 years from the date of purchase; or for commercial purchasers, 1 year from the date of purchase. No warranty is provided on batteries.



#### COMPLIES WITH:

- ASME A112.18.1 / CSA B125.1 ♦
- ASME A112.18.3
- Indicates compliance to ICC/ANSI A117.1
- EPA WaterSense®

- ♦ Your Delta Faucet hand shower incorporates a backflow protection system that has been tested to be in compliance with ASME A112.18.3 and ASME A112.18.1/CSA B125.1. It incorporates two certified check valves in series, which operate independently and are integral, non-serviceable parts of the wand assembly.

**Delta Faucet Company**  
55 E. 111th Street, Indianapolis, IN 46280  
350 South Edgeware Road, St. Thomas, ON N5P 4L1  
© 2019 Delta Faucet Company

Twinn Bath

proj/HSA  
✓



DELTA

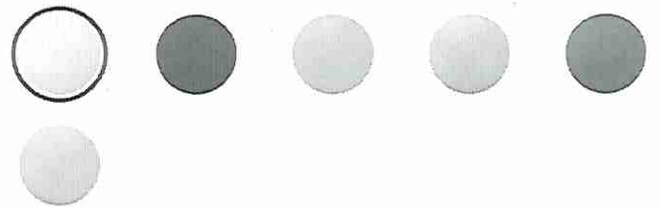
# Shower Arm - 16"

MODEL#: RP46870



- Backed by Delta Faucet's Lifetime Limited Warranty
- Backed by Delta Faucet's Lifetime Limited Warranty

Finish: **Chrome**



## Installation Information

Over All Height :  
2-1/2"

Valve Type :  
NA

Turn Bath

may 11/8k

2

DELTA

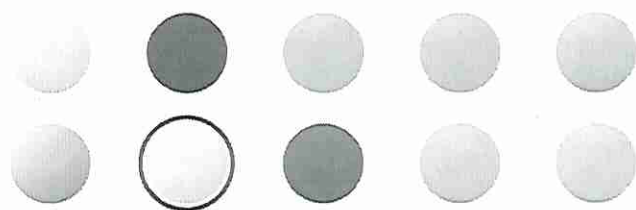
# Flange - Shower

MODEL#: RP6025PR



- Backed by Delta Faucet's Lifetime Limited Warranty
- Sturdy metal construction ensures durability
- Backed by Delta Faucet's Lifetime Limited Warranty

Finish: Lumicoat Chrome



## Installation Information

Over All Height :  
15/32

Valve Type :  
NA

Turn Bath

myths  
Lee

DELTA

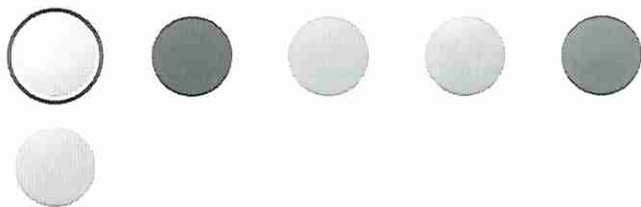
# Shower Arm - 16"

MODEL#: RP46870



- Backed by Delta Faucet's Lifetime Limited Warranty
- Backed by Delta Faucet's Lifetime Limited Warranty

Finish: Chrome



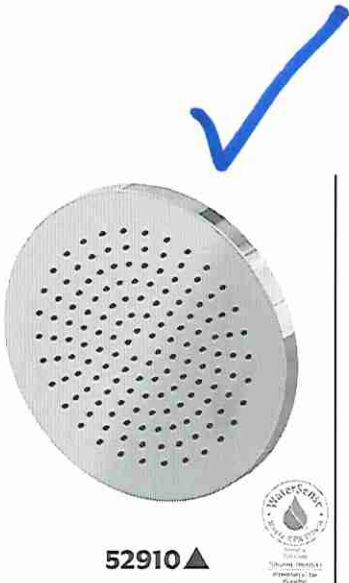
## Installation Information

Over All Height :  
2-1/2

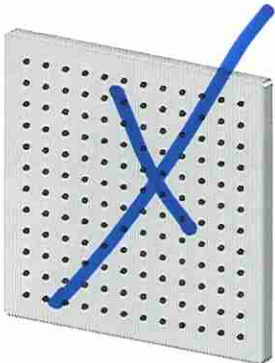
Valve Type :  
NA

LOT 17  
Bath 3

Mig11312  
2



52910▲



52920▲



see what Delta can do™

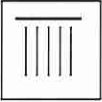
SHOWER HEADS

- 9.75" (248 mm) Round Rain Can (52910▲)
- 10.0" (254 mm) Square Rain Can (52920▲)

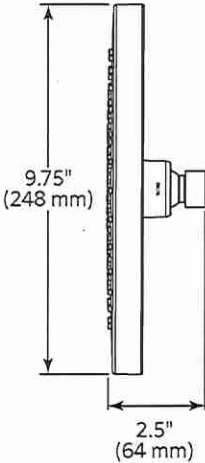
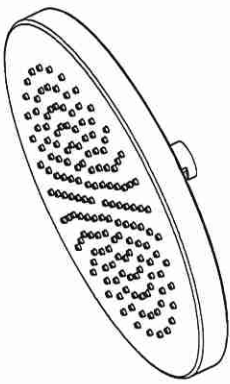
STANDARD SPECIFICATIONS

- Maximum flow rate - 1.75 gpm (9.5L/min)
- Single spray setting shower head
- Stainless steel construction
- Soft, rubber Touch-Clean spray holes

52910▲ - Shower Head



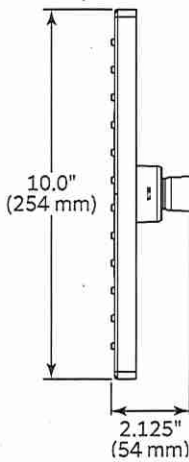
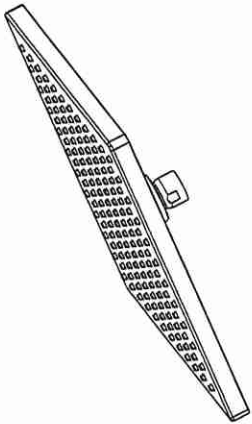
Soft Rain  
Spray




52920▲ - Shower Head



Soft Rain  
Spray



COMPLIES WITH

- ASME A112.18.1 / CSA B125.1
-  EPA WaterSense® listed

**NOTICE** Dimensions are for reference only. Measurements may vary ± 0.25" (6 mm)  
Flow rates are at 80 psi (550 kPa).  
▲ Designate Proper Finish Suffix  
**WaterSense**® is a registered trademark of the U.S. Environmental Protection Agency.  
Delta Faucet Company reserves the right (1) to make changes in specifications and materials, and (2) to change or discontinue models, both without notice or obligation. See current full-line price book or [www.deltafaucet.ca](http://www.deltafaucet.ca) for finish options and product availability.

**Delta Faucet Company**  
350 South Edgeware Road, St. Thomas, ON N5P 4L1  
55 E. 111th Street, Indianapolis, IN 46280  
© 2024 Delta Faucet Company

**DSP-B-52910, Rev. A**

LOT 17  
Bath 3

Mog/12  
✓



50' LOTS



## Envirosense® Power Vent

### 94% Condensing Gas Water Heater

The Envirosense® Power Vent is an ENERGY STAR® qualified, 50-gallon, 76,000 BTU gas water heater, equipped with a fully submerged, spiral-shaped condensing heat exchanger. This design provides much greater heat transfer surface than a standard straight flue tube, resulting in 94% thermal efficiency and higher hot water output than standard 78% efficient water heaters. With a 22" diameter, the Envirosense Power Vent can be installed in less space than a 75-gallon unit and delivers greater recovery and lower operating costs. The Envirosense Power Vent is so advanced, it delivers hot water shower after shower... at a continuous flow of over 3 gallons per minute.\*

#### POWER VENT DESIGN FOR INSTALLATION VERSATILITY

- Modular blower, with 120V, 60Hz electrical system (5 amps or less), 6-foot cord with standard 3-prong connector
- Combined horizontal and vertical vent runs terminating through outside wall, using ULC S636 PVC, CPVC or polypropylene pipe as follows:
  - 2" pipe allows vent runs up to 25 equivalent feet
  - 3" pipe allows vent runs up to 65 equivalent feet
  - 4" pipe allows vent runs up to 125 equivalent feet
- Supplied with PVC pipe and elbows to connect heat exchanger outlet to blower, including condensate elbow and drain, and ULC S636 PVC Vent Attenuation Assembly (VAA)

#### SIDE-MOUNTED TAPS FOR RECIRCULATING SYSTEMS

- Hot and cold side taps allow for combination systems for water heating plus space heating, radiant floor heating or other applications requiring a recirculating hot water loop
- Plugs for recirculating taps are shipped with water heater

#### Intelli-Vent™ GAS CONTROL WITH SILICON NITRIDE HOT SURFACE IGNITER

- Premium-grade hot surface igniter eliminates standing pilot
- Electronic circuitry provides superior system diagnostic capabilities plus extremely precise temperature control

#### COMMERCIAL-GRADE GLASS LINING WITH TWO MAGNESIUM ANODE RODS

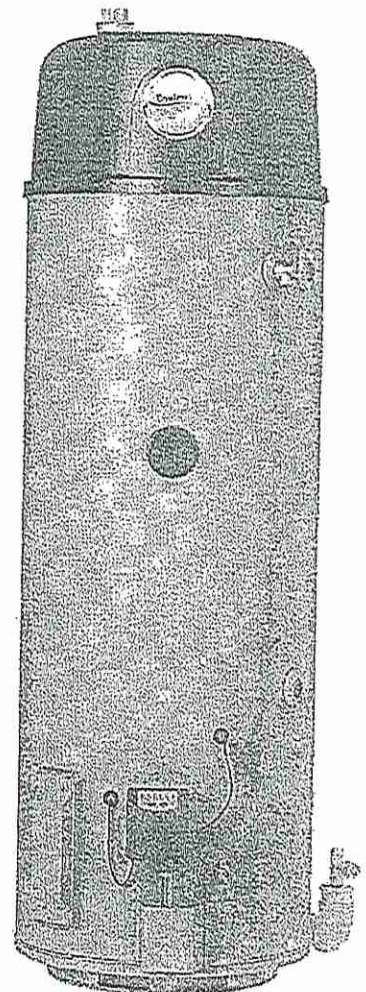
- Superior protection against tank corrosion
- Glass lining protects all water side tank surfaces plus inside of internal heat exchanger exposed to condensate

#### WARRANTY\*\*

- 6 year limited tank warranty
- 6 year limited parts warranty

#### AVAILABLE IN NATURAL GAS ONLY

\* 3.27 GPM continuous flow, based on 65°F/18°C inlet water temperature and 110°F/43°C outlet water temperature. \*\*In residential applications. Reduced warranty in commercial applications.



Initial  
SF

May 17

Le





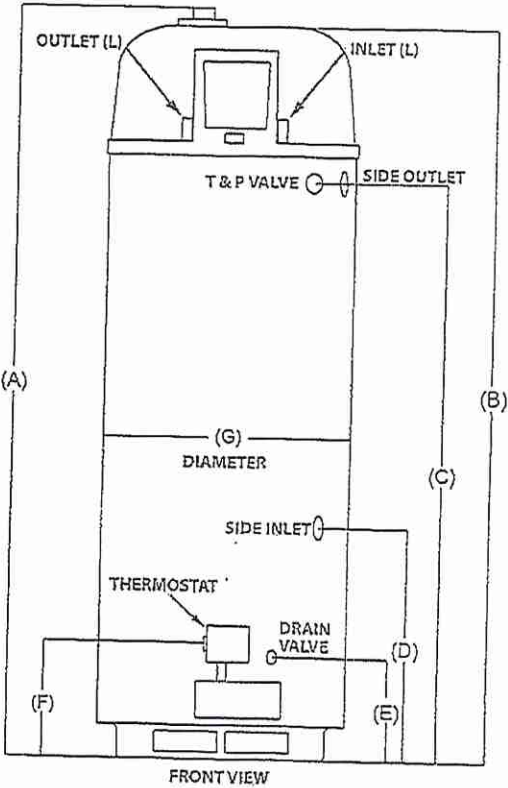
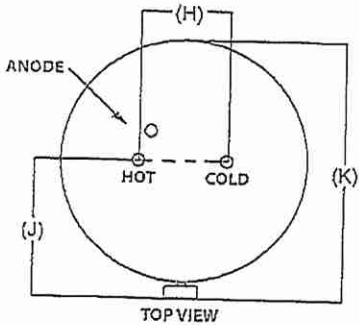
Envirosense® Power Vent  
94% Condensing Gas Water Heater

PERFORMANCE								
Model	Series	Capacity		Maximum Certified Altitude	Input	Recovery Rate at 90°F Temperature Rise	Thermal Efficiency	BC Compliant
		USG	L	FT (M)	BTU/h	GPH (LPH)		
NATURAL GAS								
6GS076HVC02*	120	50	189	5,300 (1,615)	76,000	96 (364)	94%	✓

DIMENSIONS & SHIPPING WEIGHT														
Model	Installation Height	Height to Top of Tank	Height to T&P	Height to Upper Side Connection	Height to Lower Side Connection	Height to Drain Valve	Height to Thermostat	Tank Diameter	Hot Connection to Cold Connection	Water Connection Depth From Front of Tank	Overall Depth	Top Water Connections	Side Water Connections	Shipping Weight
	A IN (CM)	B IN (CM)	C IN (CM)	C IN (CM)	D IN (CM)	E IN (CM)	F IN (CM)	G IN (CM)	H IN (CM)	J IN (CM)	X IN (CM)	IN NPT	IN NPT	LB (KG)
NATURAL GAS														
EG5076HVC02*	71 (180)	68 3/8 (174)	52 (132)	52 (132)	21 (53)	9 1/4 (23)	12 (30)	22 (56)	8 (20)	15 3/4 (40)	27 (69)	3/4	3/4	225 (102)

Natural gas only.

\*Model has side connections.



Initial  
SF

M.S.  
L.S.