

CONSTRUCTION SUMMARY		RECEIVED	
Red Oaks on Bayview - Trinimont Developments Inc.		OCT - 6 2022	
PURCHASERS: RAYMOND HU and TIFFANY TOM		TEL:	
LOT / PHASE	REG. PLAN #	HOUSE TYPE	
100 / 1	65M-4737	Maple 3 Elev C	

CABINETRY

1 - CABINETRY PROVISION - PROVISION FOR PLUG ON ISLAND (PLUG EXTRA ORDERED SEPARATELY) 06Oct22 Note:	
1 - KITCHEN- SHIFT FRIDGE OVER TO ACCOMODATE SPACE FOR BUILT INS - SEE SKETCH 29Sep22 Note:	
1 - KITCHEN - VALENCE SHIELD - (LIGHTING NOT INCLUDED) 29Sep22 Note:	

CABINETRY ACCESSORIES

1 - KITCHEN CABINETRY UPPER - FULL DEPTH ABOVE FRIDGE - WITH GABLES - 600MM - PRICE IS EACH - STANDARD 29Sep22 Note:	
1 - KITCHEN CABINETRY - BUILT-IN MICROWAVE/OVEN COMBO - STANDARD 29Sep22 Note:	
1 - KITCHEN CABINETRY BASE - COOKTOP CABINET WITH POT DRAWERS (2 DRAWERS) - STANDARD 29Sep22 Note:	

CONSTRUCTION

1 - LAYOUT REVISIONS MUD ROOM- DELETE CLOSET, DELETE DOOR TO MUDROOM FROM LOWER LANDING 29Sep22 Note:	
1 - PROVISION FOR SHAMPOO NICHE APPROX. 14" WIDE X 20" HIGH AS PER SKETCH – IF CONSTRUCTION PERMITS MASTER ENSUITE 29Sep22 Note:	
1 - SMOOTH CEILINGS- SECOND FLOOR 29Sep22 Note:	
1 - SMOOTH CEILINGS ON FIRST FLOOR ONLY 29Sep22 Note:	
1 - GREAT ROOM- WAFFLE CEILINGS- LAYOUT AS PER SKETCH 29Sep22 Note:	

COUNTER TOP

1 - SHAMPOO NICHE 14" WIDE X 20" HIGH AS PER SKETCH – MARBLE, GRANITE OR QUARTZ – IF CONSTRUCTION PERMITS - REQUIRES PROVISION FROM CONSTRUCTION MASTER ENSUITE 29Sep22 Note: SUPPLY & INSTALL	
---------------------------------------------------------------------------------------------------------------------------------------------------------------------------------------------------------	--

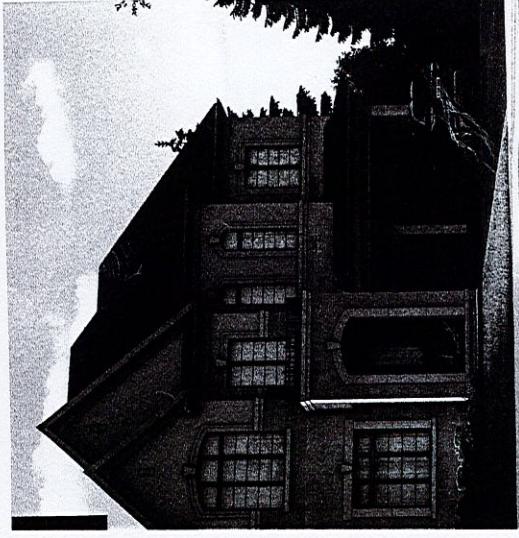
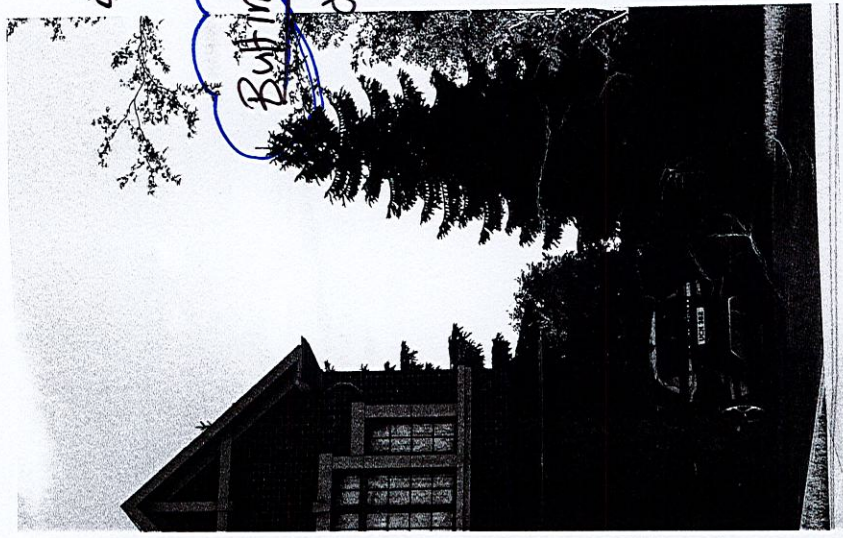
ELECTICAL

1 - PLUG – ROUGH-IN FOR ELECTRIC CAR PLUG IN GARAGE – FOR FUTURE ELECTRIC CAR – 240V / 40-50 AMPS- SEE SKETCH FOR LOCATION 29Sep22 Note: SPECIFICATIONS REQUIRED	
------------------------------------------------------------------------------------------------------------------------------------------------------------------------	--

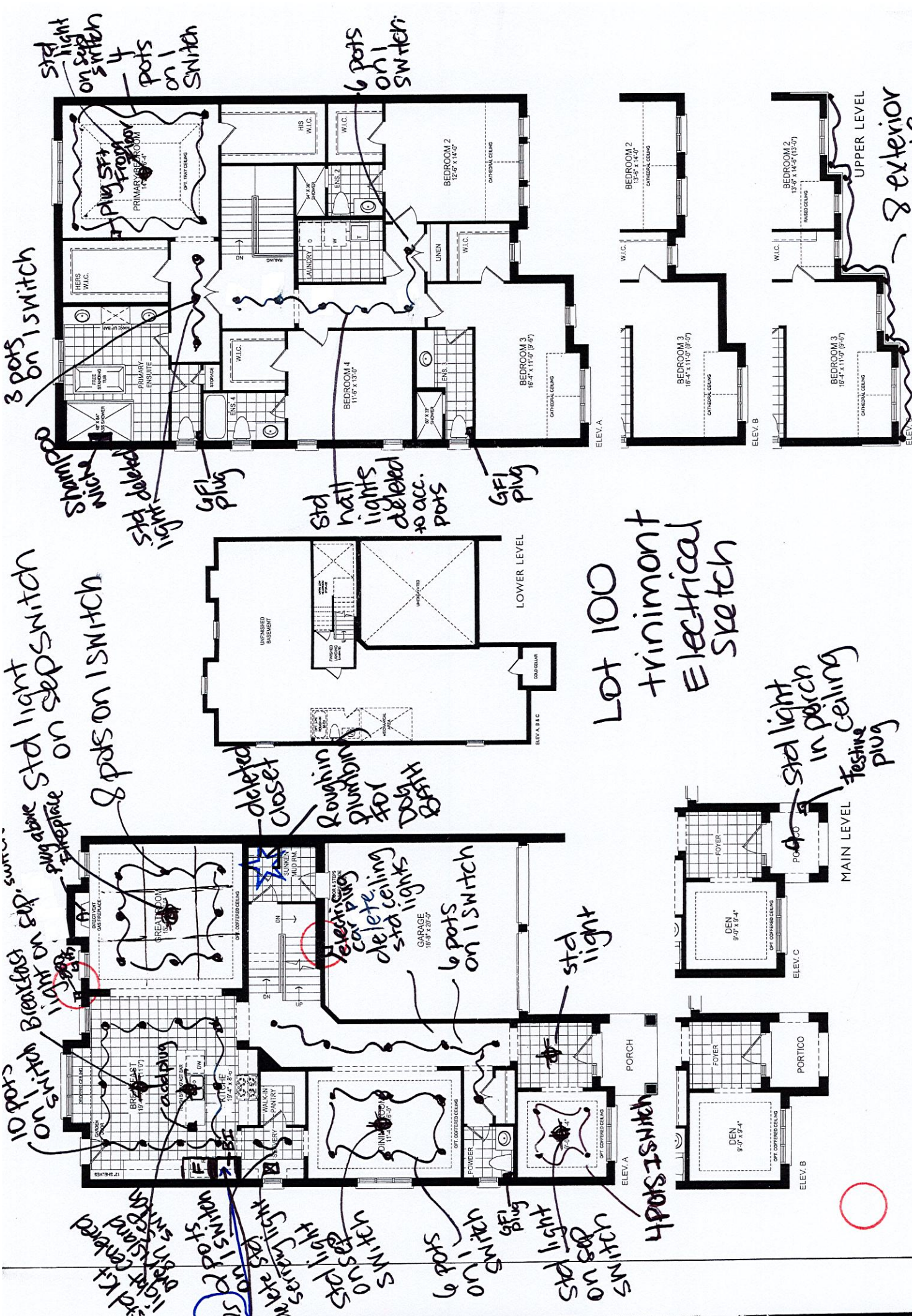
ELECTRICAL

1 - PLUG - ELECTRICAL PLUG - ADD TO ISLAND 29Sep22 Note:	
1 - RELOCATE STANDARD KITCHEN LIGHT TO BE CENTERED OVER ISLAND 29Sep22 Note:	
1 - STANDARD PORCH LIGHT TO BE CENTERED IN PORCH CEILING 29Sep22 Note:	
13 - POT LIGHT - LED - SECOND FLOOR INSTALLATION UPPER HALL- 6 MASTER BEDROOM- 7 DELETE STANDARD CEILING LIGHTS IN UPPER HALL AND MASTER BEDROOM HALL AREA- SEE SKETCH 29Sep22 Note:	

<div>CONSTRUCTION SUMMARY</div> <div>Red Oaks on Bayview - Trinimont Developments Inc.</div> <div>PURCHASERS: RAYMOND HU and TIFFANY TOM<div>TEL:</div></div>				
LOT / PHASE	REG. PLAN #	HOUSE TYPE		
100 / 1	65M-4737	Maple 3 Elev C		
<div>36 - POT LIGHT - LED - FIRST FLOOR INSTALLATION</div> <div>DEN- 4</div> <div>MAIN HALL- 6</div> <div>DINING ROOM- 6</div> <div>GREAT ROOM- 8</div> <div>KITCHEN/BREAKFAST/SERVERY- 12</div> <div>DELETE STANDARD CEILING LIGHTS IN MAIN HALL , SERVERY AND SIDE HALL INFRONT OF POWDER ROOM- SEE SKETCH</div> <div>29Sep22 Note:</div>				
<div>8 - POT LIGHT - EXTERIOR - SOFFIT MOUNT - REGULAR VOLTAGE - SEE SKETCH FOR LOCATIONS</div> <div>29Sep22 Note:</div>				
<div>1 - KITCHEN - VALANCE LIGHTING - FLORESCENT LIGHTING</div> <div>29Sep22 Note:</div>				
<div>1 - BUILT IN OVEN AND COOKTOP PROVISION - PROVISION ONLY - ELECTRICAL ONLY</div> <div>29Sep22 Note:</div>				
<div>1 - PLUG - ELECTRICAL PLUG- MASTER BEDROOM 5FT FROM FLOOR FOR FUTURE WALL MOUNT TV- SEE SKETCH FOR LOCATION</div> <div>29Sep22 Note:</div>				
<div>3 - PLUG - ELECTRICAL PLUG WITH GFI - NEXT TO TOILET FOR FUTURE BIDET TOILET- SEE SKETCH FOR LOCATIONS (LOCATIONS MAY VARY DUE TO CONSTRUCTION ALLOWANCES)</div> <div>MASTER ENSUITE,ENSUITE 3 AND POWDER ROOM</div> <div>29Sep22 Note:</div>				
<div>1 - PLUG - ELECTRICAL PLUG - TO BE INSTALLED OVER FIREPLACE</div> <div>29Sep22 Note:</div>				
<div>1 - PLUG - ELECTRICAL PLUG WITH GFI AND SWITCH - FOR FESTIVE LIGHTING- SEE SKETCH FOR LOCATION</div> <div>29Sep22 Note:</div>				
<div>FIREPLACE AND ACCESSORIES</div>				
<div>1 - GAS LINE ROUGH-IN FOR BARBECUE - FIRST FLOOR- SEE SKETCH FOR LOCATION</div> <div>29Sep22 Note:</div>				
<div>HEATING AND AIR CONDITIONING</div>				
<div>1 - HUMIDIFIER- GENERAL AIRE- 1099</div> <div>29Sep22 Note:</div>				
<div>PLUMBING</div>				
<div>1 - MUD ROOM- ADD ROUGH-IN FOR FUTURE DOG BATH- SEE SKETCH FOR LOCATION</div> <div>29Sep22 Note:</div>				
<div>1 - DELTA SHOWER KIT - DELTA TRINSIC CHROME - DF-KIT18- NO TOE TESTER</div> <div>MASTER ENSUITE</div> <div>29Sep22 Note:</div>				
<div>1 - ADD SINK WITH FAUCET TO SERVERY-</div> <div>SINK- BLANCO HORIZON U 1 8"- 401251</div> <div>FAUCET- DELTA TRINSIC BAR #9159-DST CHROME</div> <div>29Sep22 Note:</div>				
<div>1 - WATER LINE FOR FRIDGE - ROUGH-IN ONLY</div> <div>29Sep22 Note:</div>				
<div>PROMOTIONAL</div>				
<div>1 - LESS CREDIT FROM PURCHASER EXTRA SHEET IN OFFER</div> <div>29Sep22 Note:</div>				



norches may vary at any exterior entrance ways due to



The Maple 3

Includes 49 sq.ft. of finished lower level area.

Orientation of home may be reversed and purchaser agrees to accept the same. Steps and porches may vary at any exterior entrance ways due to

LOT 100
TRINIMONT DEV. INC.
RED OAKS ON BAYVIEW
RICHMOND HILL, ONTARIO

MAPLE 3
ELEVATION C

REVISIONS:

1. ADD WAFFLE CEILING TO GREAT ROOM.
 2. REMOVE DOOR TO MUDROOM AND MAKE 34" ARCHWAY.
 3. DELETE CLOSET
- add rough in plumbing for future dog bath



delete closet
add rough in
for DOG BATH

MAIN LEVEL

DISCLAIMERS: SKETCH NOT TO SCALE. DIMENSIONS, SPECIFICATIONS AND ARCHITECTURAL DETAILS SUBJECT TO MODIFICATION BY THE VENDOR. SKETCH IS ONLY FOR THE PURPOSE OF ILLUSTRATING REVISIONS REQUESTED BY THE PURCHASER AND ALL REVISIONS ARE SUBJECT TO VENDOR'S FINAL APPROVAL. ONLY REVISIONS ACCEPTED IN WRITING BY THE PURCHASER AND VENDOR ON A PURCHASER'S EXTRA SHEET WILL BE INCORPORATED INTO THE PLANS FILED WITH THE MUNICIPALITY. E. & O.E.

REGION	SCALE	N.T.S.
DESIGN	BY MB	PAGE No. 1 OF 1
INC.		

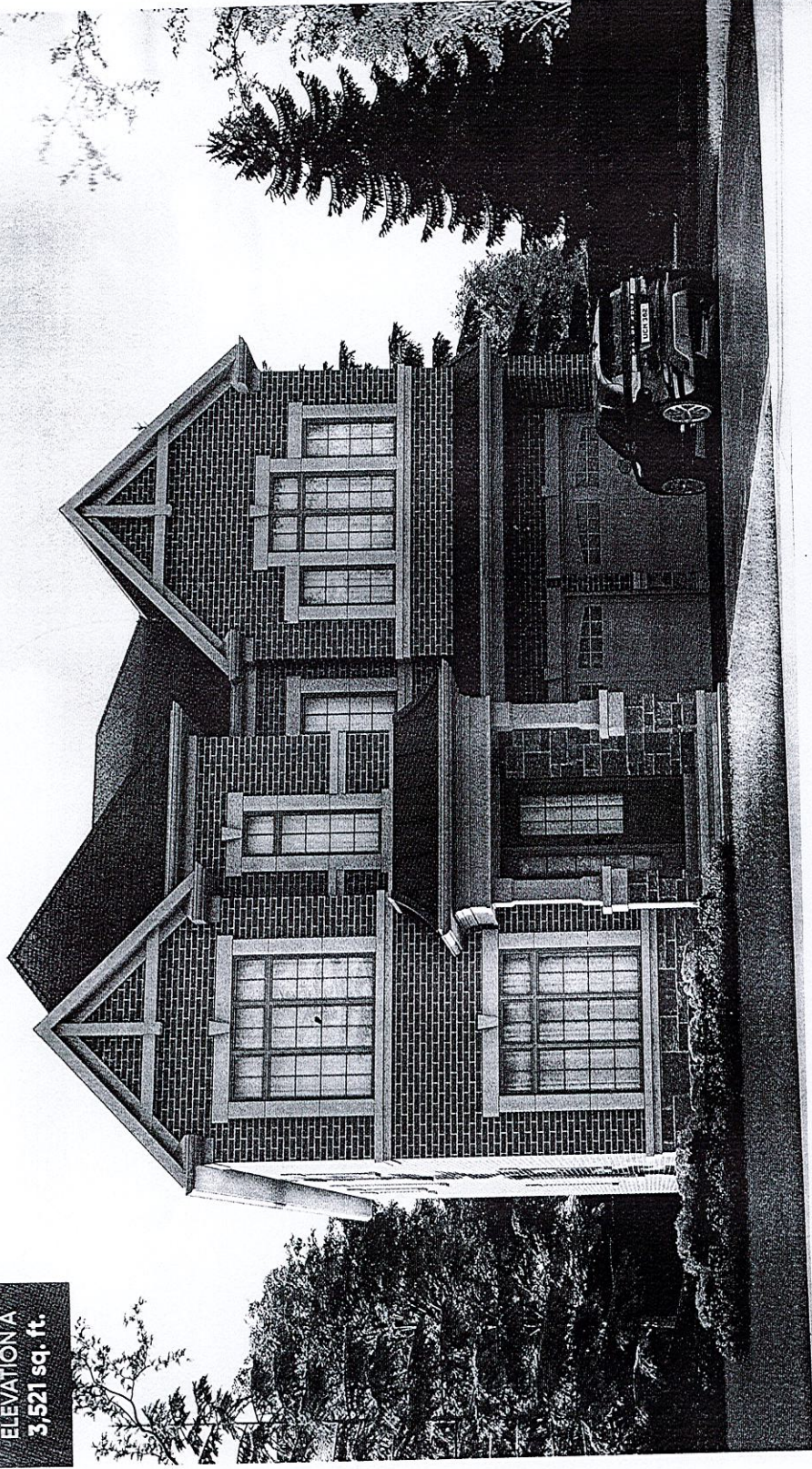
TRINITY POINT

LOT 100
trimmont

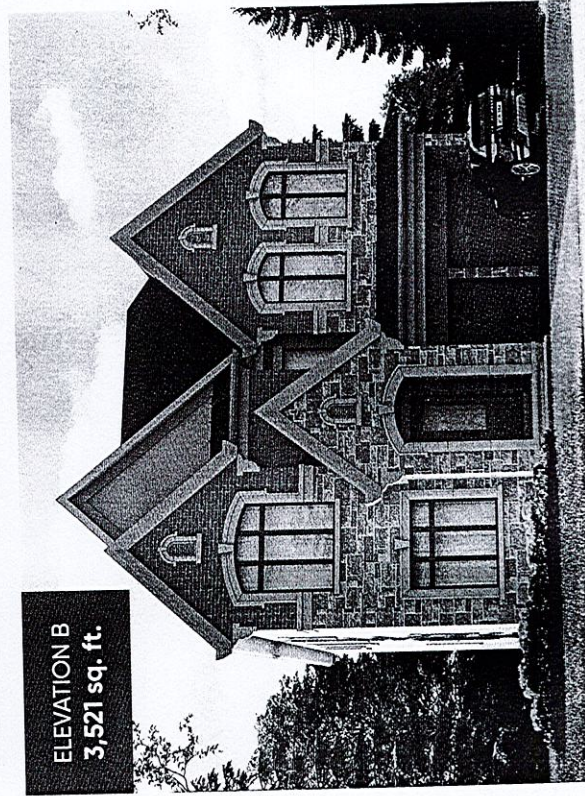
The Maple 3



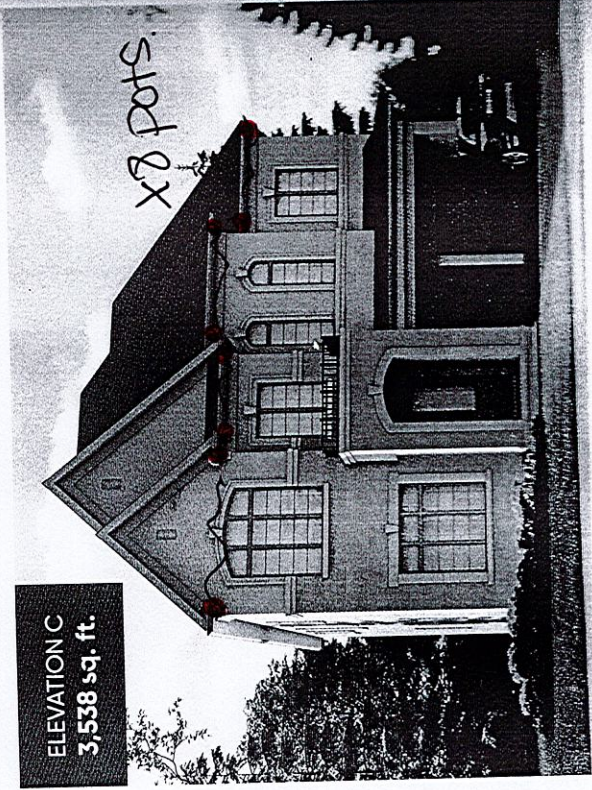
ELEVATION A
3,521 sq. ft.



ELEVATION B
3,521 sq. ft.



ELEVATION C
3,538 sq. ft.



Lot 100 trimmont

PAGE 1 OF 7



BOSCH
Invented for life

36" Induction Cooktop

800 Series – Black NIT8660UC



NIT8660UC
Black

Also available in:
Black with NIT8660SUC
Stainless Steel Frame

The 800 Series induction cooktop is sleek in design, and features AutoChef® technology which maintains precise cooking temperatures.

Features & Benefits

Induction – faster than gas and electric cooktops. Precise cooking, easy cleaning and more convenience

AutoChef® – regulates temperatures continuously during frying and adjusts them as needed

12" dual-ring center cooking zone for large pots and pans

Home Connect™ – the easy way to connect your smart device with your Bosch cooktop

Hood Control – convenient operation of the Home Connect™ enabled ventilation via your cooktop

Element Performance	
Power of Front Left heating element	1,800 W
Power of Front Left heating element (in boost)	3,100 W
Power of Back Left heating element	1,800 W
Power of Back Left heating element (in boost)	3,100 W
Power of Center heating element	3,300 / 2,200 W
Power of Center heating element (in boost)	5,400 / 3,600 W
Power of Back Right heating element	1,400 W
Power of Back Right heating element (in boost)	2,200 W
Power of Front Right heating element	2,200 W
Power of Front Right heating element (in boost)	3,600 W
Burners with booster	All

Element Size	
Dimension of Front Left heating element	7"
Dimension of Back Left heating element	7"
Dimension of Center heating element	12", 9"
Dimension of Back Right heating element	6"
Dimension of Front Right heating element	9"

General Properties	
Home Connect™ (Wi-Fi Enabled)	Yes
Controls	PreciseSelect® Touch

Technical Details	
Watts	9,600 W
Circuit breaker	40 A
Volts	208-240 V
Frequency	60 Hz
Plug type	No plug
Power cord length	37"
Energy source	Electric

Dimensions & Weight	
Overall appliance dimensions (HxWxD)	4 1/8" x 37" x 21 1/4"
Required cutout size (HxWxD)	4 1/8" x 34 7/8" x 20"
Minimum distance from counter front	2 1/4"
Minimum distance from rear wall	2"
Net weight	53 lbs

Accessories—Optional



HEZ390210
8" AutoChef® pan



HEZ390220
9" AutoChef® pan



HEZ390230
10" AutoChef® pan



US



HomeConnect

Accessories: To purchase Bosch accessories, cleaners & parts please visit www.bosch-home.com/us/store or call 1-800-944-2904 (Mon-to Fri 5 am to 6 pm PST, Sat 6 am to 3 pm PST).

Notes: All height, width and depth dimensions are shown in inches. BSH reserves the absolute and unrestricted right to change product materials and specifications, at any time, without notice. Consult the product's installation instructions for final dimensional data and other details prior to making cutout.

Warranties: Please see Use & Care manual or Bosch website for statement of limited warranty.

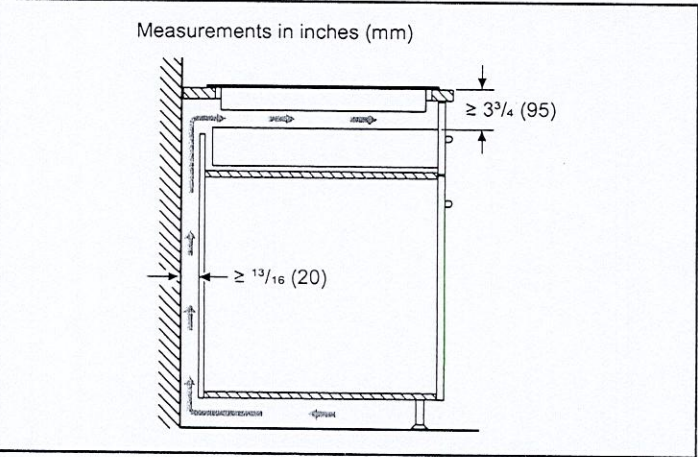
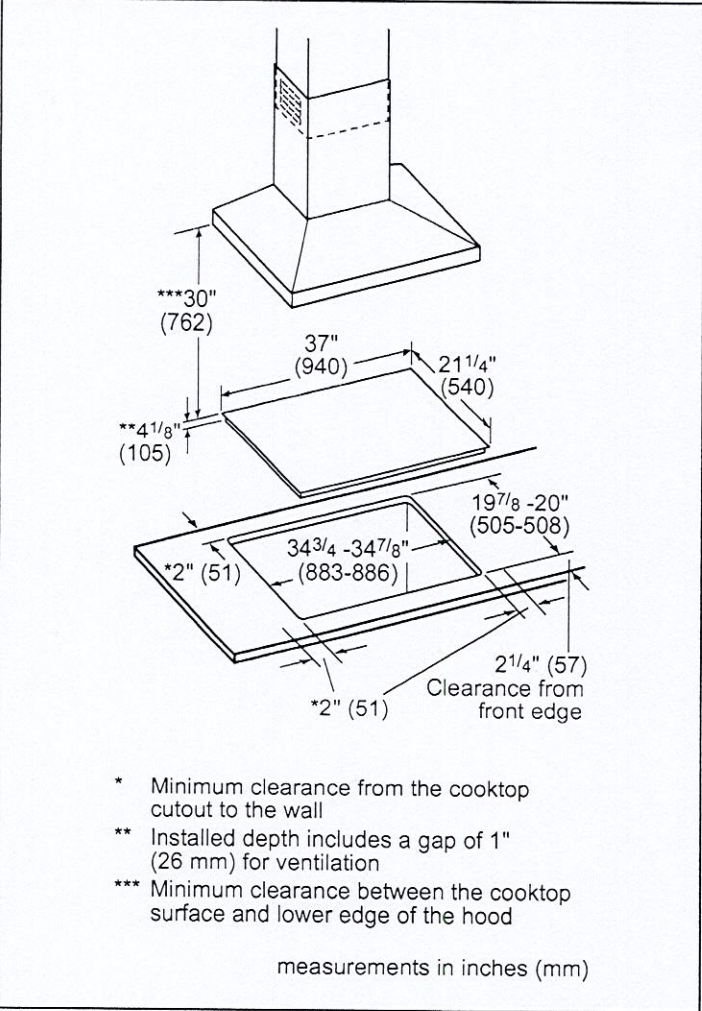
For more information on our entire line of products, go to www.bosch-home.com/us or call 1-800-944-2904

© BSH Home Appliances Corporation. All rights reserved. Bosch is a registered trademark of Robert Bosch GmbH.

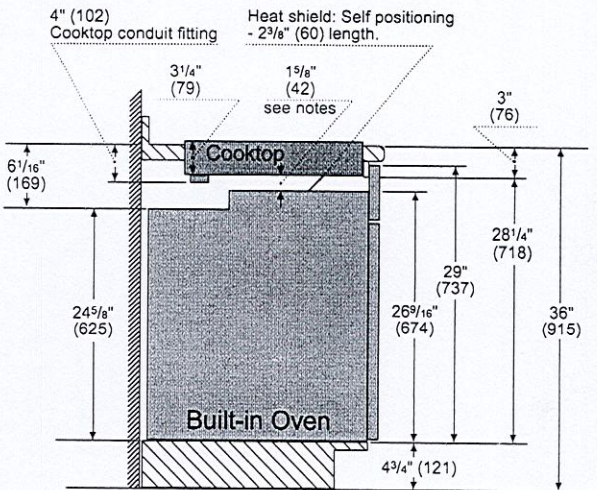
36" Induction Cooktop

800 Series – Black NIT8660UC

Installation Details



Installation above Wall Ovens

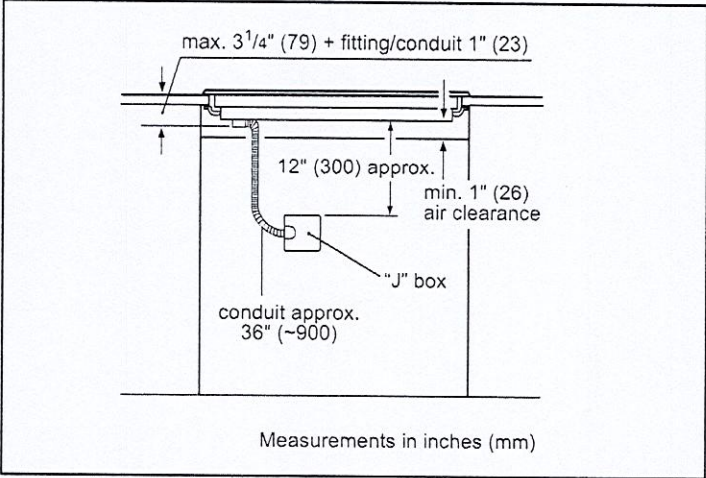


Notes:

Dimensions based on standard countertop height (36" with 4 3/4" toe kick including base plate).

The built-in oven can be installed below the induction cooktop as long as there is a minimum 1" (26) clearance between the bottom of the cooktop and the top of the oven.

measurements in inches (mm)



Accessories: To purchase Bosch accessories, cleaners & parts please visit www.bosch-home.com/us/store or call 1-800-944-2904 (Mon to Fri 5 am to 6 pm PST, Sat 6 am to 3 pm PST).

Notes: All height, width and depth dimensions are shown in inches. BSH reserves the absolute and unrestricted right to change product materials and specifications, at any time, without notice. Consult the product's installation instructions for final dimensional data and other details prior to making cutout.

Warranties: Please see Use & Care manual or Bosch website for statement of limited warranty.

For more information on our entire line of products, go to www.bosch-home.com/us or call 1-800-944-2904

© BSH Home Appliances Corporation. All rights reserved. Bosch is a registered trademark of Robert Bosch GmbH.

1 of 100 trimmont
PAGE 3 of 7

30" Speed Combination Oven

800 Series – Stainless Steel HBL8753UC



HBL8753UC
Stainless Steel

Also available in:
Black HBL8743UC
Stainless Steel

Bosch speed combination ovens create an all-in-one cooking center with an upper speed oven and a Convection Pro oven below.

Features & Benefits

2-in-1 microwave and convection oven with 9 SpeedChef® programs to simplify cooking with fast results.

Convection Pro combines a third heating element with a back fan for even browning and time savings by using multiple racks at one time.

Oven is equipped with a self-cleaning cycle that easily cleans itself via 2, 3, and 4 hour cycle options.

Download the Home Connect® app to remotely monitor and control your Bosch wall oven with your smart phone or tablet.

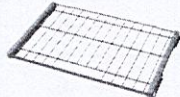
General Properties	
Home Connect® – lower cavity (WiFi enabled)	Yes
Oven modes – upper cavity	Speed oven; 12 Auto Programs (including Auto Defrost, Melt Butter, Soften Ice Cream, Pizza), 9 Sensor Cook Programs, 9 SpeedChef® Programs, Hi & Lo Broil, Convection Multi-Rack, Keep Warm, Frozen Foods
Oven modes – lower cavity	Bake, Variable Broil (hi & low), Roast, Warm, Sabbath, Proof Dough, Convection Bake, Convection Broil, Convection Roast, Pizza, Convection Multi-Rack, Convection Conversion, Temperature Probe, Fast Preheat
Cleaning type – lower	Self Clean
Telescopic rack	1
Illumination type	LED (Upper) / Halogen (Lower)
Interior lights	1 Upper / 2 Lower
Oven Performance	
Microwave power – upper cavity	1000 W
Bake / broil element – upper cavity	600 / 1,750 W
Convection element – upper cavity	1,700 W
Bake / broil element – lower cavity	2,400 / 3,800 W
Convection element – lower cavity	2,000 W
Technical Details	
Watts	9,600 W
Circuit breaker	40 A
Volts; Frequency	240 / 208 V; 60 Hz
Power cord length	60"
Plug type	Fixed Connection, No Plug
Energy source	Electric

Dimensions & Weight	
Overall appliance dimensions (HxWxD)	49" x 29 3/4" x 24 1/2"
Required cutout size – Standard (HxWxD)	48 5/8" x 28 1/2" x 23 1/2"
Required cutout size – Flush (HxWxD)	49 1/8" x 30" x 24 1/2"
Speed oven cavity size – upper	1.6 cu. ft.
Overall upper speed oven interior dimensions (HxWxD)	9 7/8" x 16 1/2" x 16 1/2"
Metal turntable diameter	14 1/8" dia.
Ceramic tray diameter	13 3/4" dia.
Rack – rectangular cookware max. – upper	15" x 12"
Oven cavity size – lower	4.6 cu. ft.
Overall lower oven interior dimensions (HxWxD)	17 13/16" x 24 1/8" x 18"
Usable lower oven interior dimensions (HxWxD)	12 1/4" x 23 1/4" x 15 1/4"
Net weight	259 lbs

Accessories – Included

Upper Oven: Metal Turntable, Square rack, Ceramic Cooking Tray
Lower Oven: 1 Telescopic and 2 Standard Oven Racks, Temperature Probe

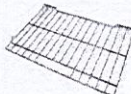
Accessories – Optional



HEZTR301
30" Telescopic Rack



00449757
Broiler Pan



00798845
30" Flat Rack



Accessories: To purchase Bosch accessories, cleaners & parts please visit www.bosch-home.com/us/store or call 1-800-944-2904 (Mon to Fri 5 am to 6 pm PST, Sat 6 am to 3 pm PST).

Notes: All height, width and depth dimensions are shown in inches. BSH reserves the absolute and unrestricted right to change product materials and specifications, at any time, without notice. Consult the product's installation instructions for final dimensional data and other details prior to making cutout.

Warranties: Please see Use & Care manual or Bosch website for statement of limited warranty.

For more information on our entire line of products, go to www.bosch-home.com/us or call 1-800-944-2904

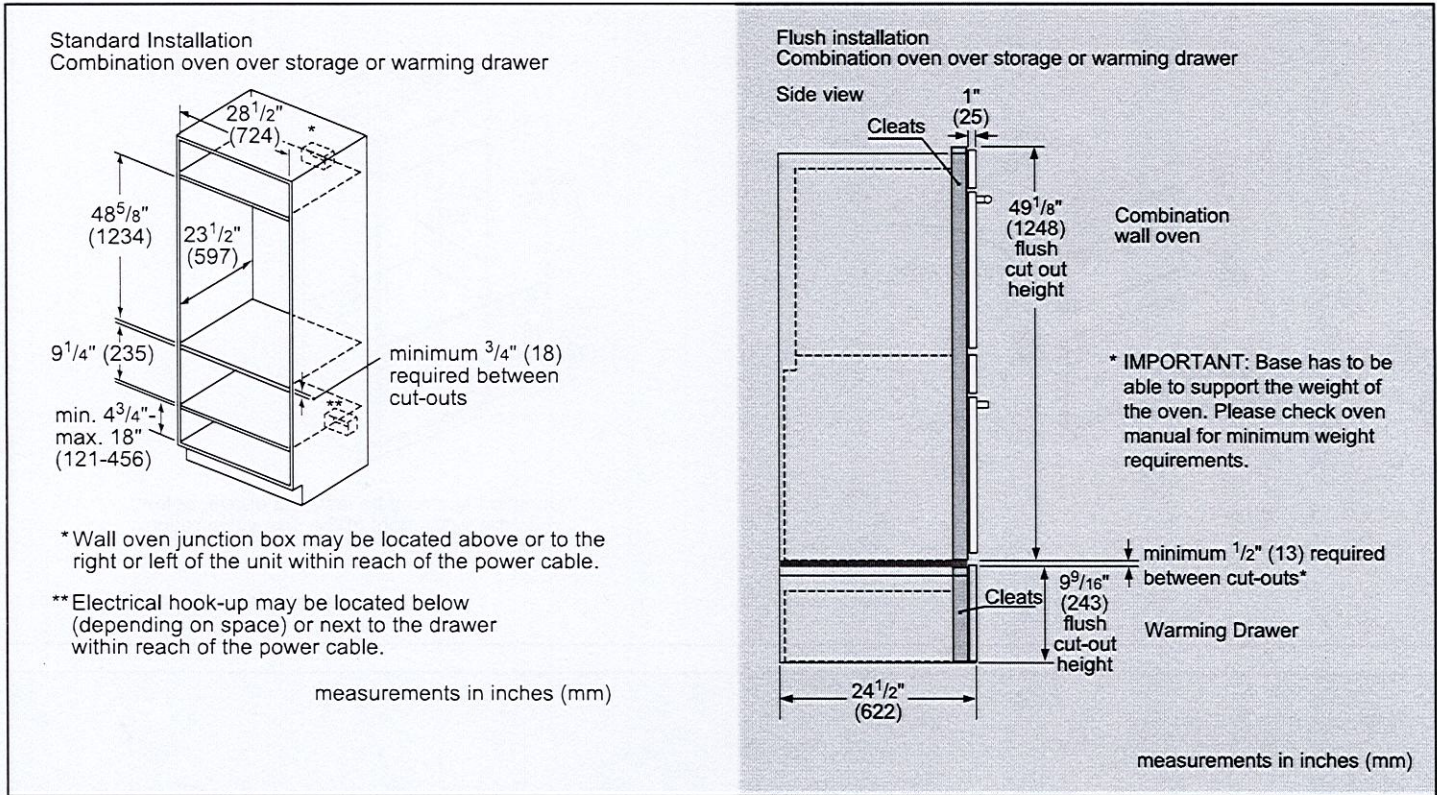
© BSH Home Appliances Corporation. All rights reserved. Bosch is a registered trademark of Robert Bosch GmbH.

30" Speed Combination Oven

800 Series – Stainless Steel HBL8753UC

PAGE 4 of 7

Installation Details



Accessories: To purchase Bosch accessories, cleaners & parts please visit www.bosch-home.com/us/store or call 1-800-944-2904 (Mon to Fri 5 am to 6 pm PST, Sat 6 am to 3 pm PST).

Notes: All height, width and depth dimensions are shown in inches. BSH reserves the absolute and unrestricted right to change product materials and specifications, at any time, without notice. Consult the product's installation instructions for final dimensional data and other details prior to making cutout.

Warranties: Please see Use & Care manual or Bosch website for statement of limited warranty.

For more information on our entire line of products, go to www.bosch-home.com/us or call 1-800-944-2904

© BSH Home Appliances Corporation. All rights reserved. Bosch is a registered trademark of Robert Bosch GmbH.

30" Speed Combination Oven

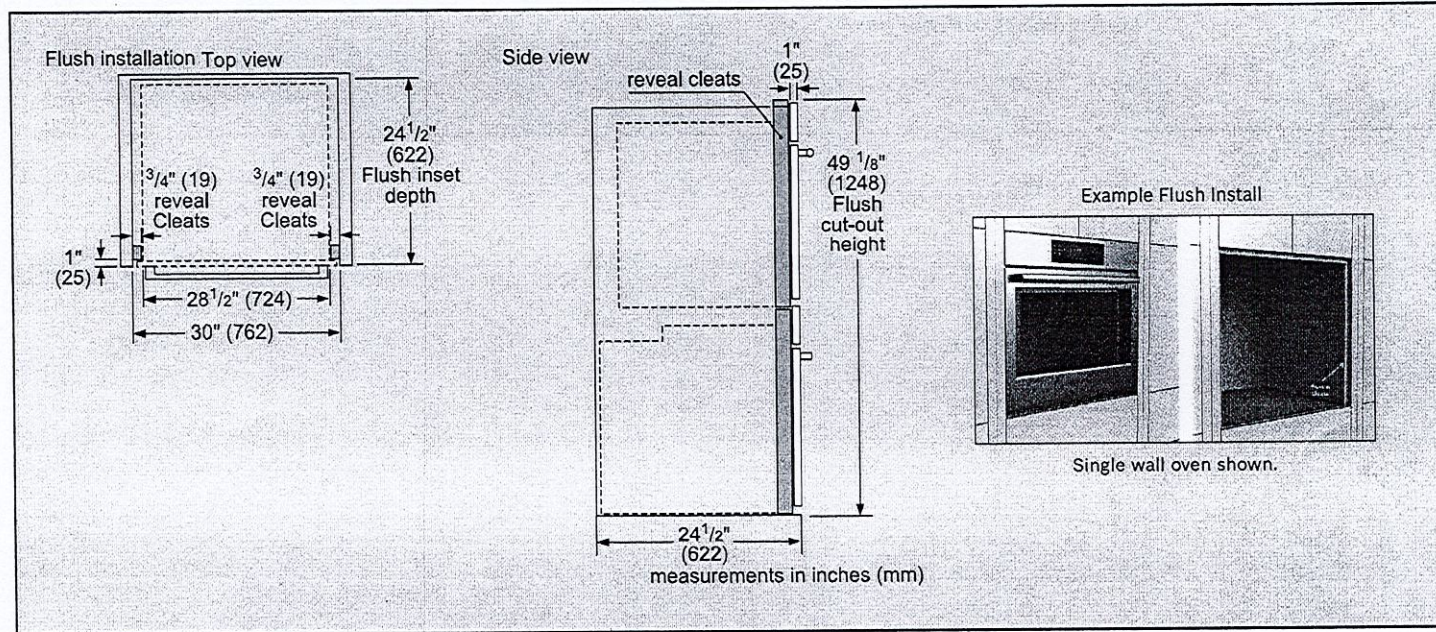
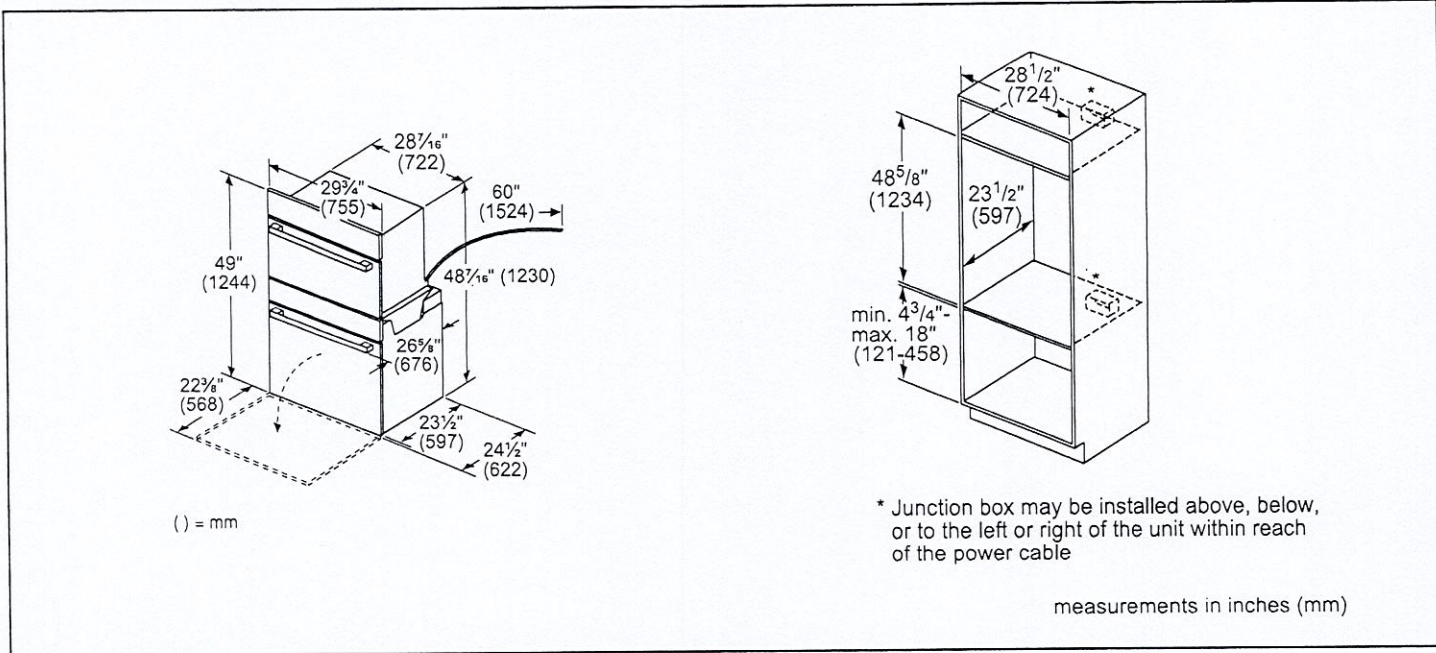
800 Series – Stainless Steel HBL8753UC

Not 100% trim mount

PAGE 5 of 7



Installation Details



Accessories: To purchase Bosch accessories, cleaners & parts please visit www.bosch-home.com/us/store or call 1-800-944-2904 (Mon to Fri 5 am to 6 pm PST, Sat 6 am to 3 pm PST).

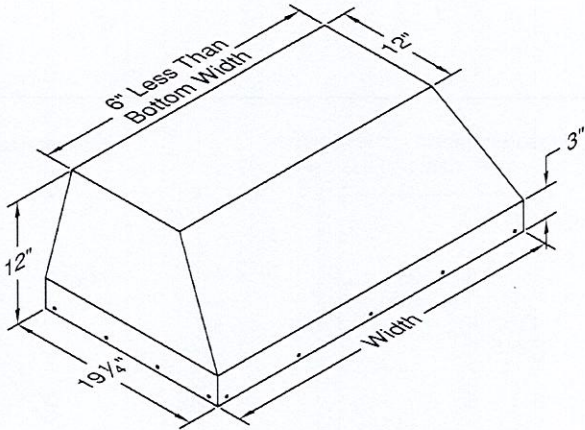
Notes: All height, width and depth dimensions are shown in inches. BSH reserves the absolute and unrestricted right to change product materials and specifications, at any time, without notice. Consult the product's installation instructions for final dimensional data and other details prior to making cutout.

Warranties: Please see Use & Care manual or Bosch website for statement of limited warranty.

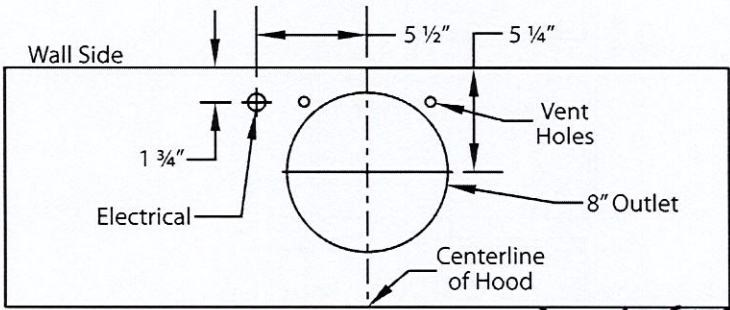
For more information on our entire line of products, go to www.bosch-home.com/us or call 1-800-944-2904

© BSH Home Appliances Corporation. All rights reserved. Bosch is a registered trademark of Robert Bosch GmbH.

WIDTH:	34 3/8"
DEPTH:	19 1/4"
HEIGHT:	12"
CFM:	600
SONES:	6.5
AMPS:	4.0
# LIGHTS:	2



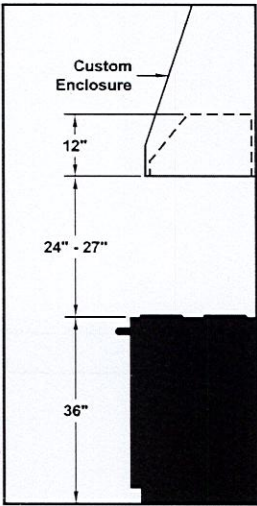
CONNECTION DIAGRAM



600 CFM B200 Dual Blower (Top View)

Purchaser acknowledges Vendor will only install std 6" vent.

REC. MOUNTING HEIGHT*



* Exceeding recommended mounting height may compromise performance.

ELECTRICAL/MECHANICAL SPECIFICATIONS FOR BLOWER UNIT

MODEL	VOLTS	AMPS+	HZ	RPM	CFM SP@0.0"	EQUIV CFM\$	CFM SP@0.1"	CFM SP@0.2"	CFM SP@0.3"	MIN. ROUND DUCT SIZE	SONES#
B200 Dual	115	4.0	60	1550	600	900	531	480	430	8" (50 sq. in.)	6.5

+ This model is equipped with LED lighting: (2 lights: 30" - 41", 3 lights: 42" - 53", 4 lights: 54" - 66").

\$ Because the Magic Lung blower uses centrifugal filtration rather than conventional baffle or mesh filters, the Magic Lung blower can handle cooking equipment with higher cubic feet per minute (CFM) requirements and can deliver equivalent CFM much more efficiently than other filtration systems. When comparing the Magic Lung with other blower units made by other manufacturers, use the "Equivalent CFM".

Ratings in accordance with the Standard Test Code by the Energy Systems Laboratory of the Texas Engineering Experiment Station.

10+ 100 trimmont

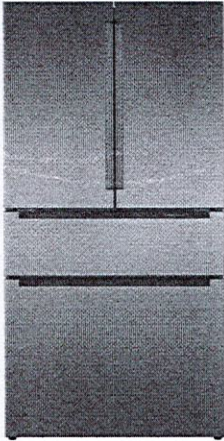
36" Counter-Depth 4-Door Refrigerator

800 Series – Stainless Steel B36CL80ENS



BOSCH
Invented for life

PAGE 7 of 7



B36CL80ENS
Stainless Steel w/
Recessed Handles

Introducing the revolutionary, new FarmFresh System™, with four freshness technologies designed to work together to keep your food fresher, longer. Enjoy less food waste, new innovative features and more thoughtful design.

Features & Benefits

VitaFreshPro™ provides pre-programmed freshness settings to optimize temperature and humidity to keep meat, fish, and produce fresher, longer.

Interior Water Dispenser is thoughtfully placed inside for refreshing water at the touch of a button or a push of a nozzle.

FlexBar™ utilizes typically unused space in the upper refrigerator cavity.

Recessed handle provides flush design to match any sleek kitchen.

General Properties	
Full 72" height and true counter depth for built-in appearance	Yes
Easy Clean Stainless Steel	Yes
Lighting	Recessed LED light bars
Number of compressors/evaporators	2 / 2
Defrost process refrigerator section	Frost-free
Number of shelves – refrigerator	5
Adjustable shelves – refrigerator	4 half-width
Shelf material – refrigerator	Tempered glass
Type of shelves – refrigerator	Frameless split shelves with metal trim
Flexible storage bar	FlexBar™
Gallon storage bins	2
Humidity control compartments	2
Full width temp. & humidity controlled drawer	VitaFreshPro™
Ice maker	Yes
Water filter	UltraClarityPro™
Internal water dispenser	Yes
Touch control panel	Yes
AirFresh® filter	Yes
FreshProtect™ ethylene filter	Yes
MultiAirFlow™	Yes
Stainless steel back wall	Yes
Defrost process freezer section	Automatic
Number of drawers – freezer	3
Wi-Fi enabled	Yes, Home Connect™ app

Capacity	
Total capacity (cu. ft.)	20.5
Refrigerator capacity (cu. ft.)	14.5
Freezer capacity (cu. ft.)	6
Technical Details	
Current (A)	15 A
Volts (V)	115 V
Frequency (Hz)	60 Hz
Power cord length (in.)	91
Plug type	120V-3 prong
Dimensions & Weight	
Appliance dimensions with hinges and doors (H x W x D) (in.)	72** x 35 5/8" x 28 3/4"
Appliance dimensions without hinges and doors (H x W x D) (in.)	71 1/2" x 35 5/8" x 24***
Required cutout size (H x W x D) (in.)	72" x 36" x 25"
Net weight (lbs)	350 lbs
Efficiency	
Energy consumption (kWh/yr)	568
ENERGY STAR® qualified	Yes
Accessories	
UltraClarityPro™ Water Filter: BORPLFTR50	
FlexBar™ Bottle Holder: BOFLEXBOTL	
FlexBar™ Deep Shelf: BOFLEXLGSH	
FlexBar™ Shallow Shelf: BOFLEXSM SH	
Ethylene Filter Refill Kit: FPETHRF50	

Home Connect



*When leveling legs are fully extended, add 5/8" to overall height, total 72 5/8".
**The cutout depth of 25" includes the required 1" airflow. The electrical covers on the back of unit do not require additional depth.

Accessories: To purchase Bosch accessories, cleaners & parts please visit www.bosch-home.com/us/store or call 1-800-944-2904 (Mon to Fri 5 am to 6 pm PST, Sat 6 am to 3 pm PST).
Notes: All height, width and depth dimensions are shown in inches. BSH reserves the absolute and unrestricted right to change product materials and specifications, at any time, without notice. Consult the product's installation instructions for final dimensional data and other details prior to making cutout.

Warranties: Please see Use & Care manual or Bosch website for statement of limited warranty.

For more information on our entire line of products, go to www.bosch-home.com/us or call 1-800-944-2904

© BSH Home Appliances Corporation. All rights reserved. Bosch is a registered trademark of Robert Bosch GmbH.